

External pressure sensor PM100

Pressure measurement up to 70 MPa with the CA700!

NEW

Main features

The highest measurement accuracy in field type

Basic accuracy: 0.01% of reading

The highest resolution in class

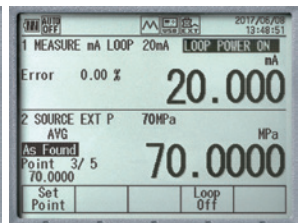
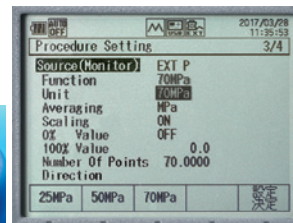
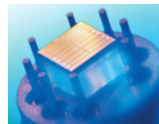
0.0001 MPa is achieved in each range

Multi range (Three pressure ranges in one unit)

- 7 MPa/10 MPa/16 MPa (-05)
- 25 MPa/50 MPa/70 MPa (-06)



Silicon Resonant
Sensor



Basic Specifications

16 MPa Model (-05)

Items		Specifications		
Pressure type		Shield gauge		
Measurement Range		0 to 7 MPa sg	0 to 10 MPa sg	0 to 16 MPa sg
Measurement display range		to 8.4000 MPa	to 12.0000 MPa	to 19.2000 MPa
Measurement accuracy*1, *2	6 ⁺ 3 months after calibration (Test after zero calibration)*5	± (0.01% of reading + 2 kPa)	± (0.01% of reading + 3 kPa)	± (0.01% of reading + 5 kPa)
	1 ⁺ 4 year after calibration (Test after zero calibration)*5	± (0.01% of reading + 2.8 kPa)	± (0.01% of reading + 3.8 kPa)	± (0.01% of reading + 5.8 kPa)
Allowable input		2.7 kPa abs to 23 MPa sg		
Temperature coefficient		± (0.001% of reading + 0.16 kPa) / °C or less		

70 MPa Model (-06) **NEW**

Items		Specifications		
Pressure type		Shield gauge		
Measurement Range		0 to 25 MPa sg	0 to 50 MPa sg	0 to 70 MPa sg
Measurement display range		to 30.0000 MPa	to 60.0000 MPa	to 77.0000 MPa
Measurement accuracy*1, *2	6 ⁺ 3 months after calibration (Test after zero calibration)*5	± (0.01% of reading + 6 kPa)	± (0.01% of reading + 10 kPa)	± (0.01% of reading + 16 kPa)
	1 ⁺ 4 year after calibration (Test after zero calibration)*5	± (0.01% of reading + 9.5 kPa)	± (0.01% of reading + 13.5 kPa)	± (0.01% of reading + 19.5 kPa)
Allowable input		2.7 kPa abs to 98 MPa sg		
Temperature coefficient		± (0.001% of reading + 0.7 kPa) / °C or less		

Common Specifications

Items	Specifications
Resolution	0.0001 MPa (0.1 kPa)
Response time*6	2.5 s or less
Internal volume	Approx. 6 cm ³
Influence of positional setup	Zero point drift ±1 kPa or less
Measurement fluid	Gas and liquid (non-corrosive, non-flammable, non-explosive, and non-toxic fluids)
Measurement fluid temperature	-10 to 50°C (Liquid temperature 5 to 50°C)
Pressure sensor	Silicon resonant sensor
Pressure sensor element	Diaphragm
Input port	1/2 NPT female thread
Measurement unit material	Diaphragm: Hastelloy C276 and input port: SUS316

*1. Yokogawa's pressure standard accuracy is excluded *2. The value measured with the PM100 is in digital communication with the CA700, and there is no error between these instruments.

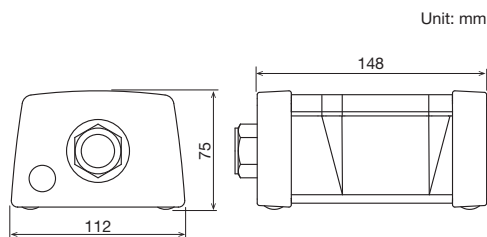
*3. 23°C±3°C, 6 months after calibration, Test after zero calibration *4. 23°C±3°C, 1 year after calibration, Test after zero calibration

*5. Zero-point calibration condition: Under atmospheric pressure *6. Time from 3.5 MPa to atmospheric release and from 0 MPa to ±3.5 kPa

General Specifications

Warm-up time	Approx. 5 minutes
Protection grade	IP54 dustproof and waterproof structure
Dimensions	Approx. 112 (W) × 75 (H) × 148 (D) mm
Weight	Approx. 1.2 kg
Compliance Standards	Safety: EN61010-1 (contamination class 2) EMC: EN61326-1 Class A, EN55011 Class A Group1
Operating temperature/humidity range	-10 to 50°C 20 to 80% (no condensation)
Storage temperature/humidity range	-20 to 60°C 20 to 80% (no condensation)
Accessories	Connection cable (1 m, Waterproof connector) 1/2" NPT male thread to 1/8" NPT female thread 1/2" NPT male thread to 1/4" NPT female thread 1/2" NPT male thread to Rc 1/4" female thread

PM100 External Dimensions



Unless otherwise specified, the dimensional tolerance is $\pm 3\%$ (but less than 10 mm is ± 0.3 mm).

Model and Suffix Code

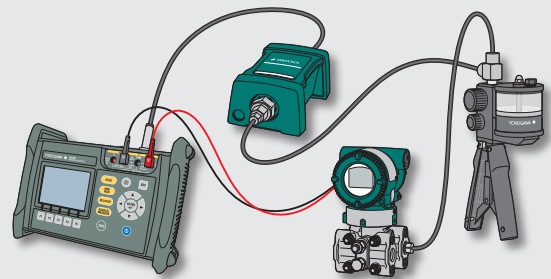
Product name	Model	Suffix Code
External Pressure sensor	PM100	General use type
		-E All countries except Japan
		-05 Shield gauge Pressure (7 MPa/10 MPa/16 MPa Range switching)
		-06 Shield gauge Pressure (25 MPa/50 MPa/70 MPa Range switching)
		-P3 (1/2" NPT female thread)

PM100 Accessories

Product name	Model	Specification
Connection cable	95020	1 m
Connector	91083	1/2" NPT male thread to 1/8" NPT female thread conversion connector
Connector	91084	1/2" NPT male thread to 1/4" NPT female thread conversion connector (when -05 is selected)
Connector	91085	1/2" NPT male thread to Rc1/4" female thread conversion connector (when -05 is selected)
Connector	91086	1/2" NPT male thread to 1/4" NPT female thread conversion connector (when -06 is selected)
Connector	91087	1/2" NPT male thread to Rc1/4" female thread conversion connector (when -06 is selected)

Applications

Field calibration of pressure transmitter



Connection cable 95020



Connector 91083

1/2" NPT male thread to 1/8" NPT female thread



Connector 91084

1/2" NPT male thread to 1/4" NPT female thread



Connector 91085

1/2" NPT male thread to Rc1/4" female thread



Connector 91086

1/2" NPT male thread to 1/4" NPT female thread



Connector 91087

1/2" NPT male thread to Rc1/4" female thread



NOTICE

- Before operating the product, read the user's manual thoroughly for proper and safe operation.

Yokogawa's approach to preserving the global environment

- Yokogawa's electrical products are developed and produced in facilities that have received ISO14001 approval.
- In order to protect the global environment, Yokogawa's electrical products are designed in accordance with Yokogawa's Environmentally Friendly Product Design Guidelines and Product Design Assessment Criteria.

YOKOGAWA

YOKOGAWA TEST & MEASUREMENT CORPORATION

Global Sales Dept. /Phone: +81-422-52-6237 E-mail: tm@cs.jp.yokogawa.com
Facsimile: +81-422-52-6462

YOKOGAWA CORPORATION OF AMERICA

YOKOGAWA EUROPE B.V.

YOKOGAWA SHANGHAI TRADING CO., LTD.

YOKOGAWA ELECTRIC KOREA CO., LTD.

YOKOGAWA ENGINEERING ASIA PTE. LTD.

YOKOGAWA INDIA LTD.

YOKOGAWA ELECTRIC CIS LTD.

YOKOGAWA AMERICA DO SUL LTDA.

YOKOGAWA MIDDLE EAST & AFRICA B.S.C(c)

Phone: +31-88-4641000
Phone: +86-21-6239-6363
Phone: +82-2-2628-3810
Phone: +65-6241-9933
Phone: +91-80-4158-6396
Phone: +7-495-737-78-68
Phone: +55-11-3513-1300
Phone: +973-17-358100

E-mail: tmi@us.yokogawa.com
E-mail: tmi@nl.yokogawa.com
E-mail: tech@ysh.com.cn
E-mail: TMI@kr.yokogawa.com
E-mail: TMI@sg.yokogawa.com
E-mail: tmi@in.yokogawa.com
E-mail: info@ru.yokogawa.com
E-mail: tm@br.yokogawa.com
E-mail: help.ymatmi@bh.yokogawa.com

Facsimile: +86-21-6880-4987
Facsimile: +82-2-2628-3899
Facsimile: +65-6241-9919
Facsimile: +91-80-2852-1442
Facsimile: +7-495-737-78-69
Facsimile: +973-17-336100

<https://tmi.yokogawa.com/>

YMI-KS-MI-SE06

The contents in this catalog is as of October 2018. Subject to change without notice.
Copyright © 2017, Yokogawa Test & Measurement Corporation

[Ed: 03/b]

Printed in Japan, 810(KP)