

## Digital Gauges

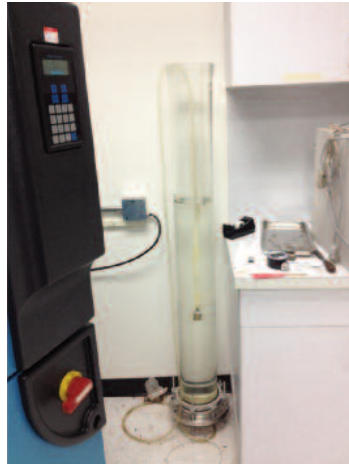
### DG/PI-1

#### DG25 ENVIRONMENTAL TESTING

**Description:** This test is designed to verify the environmental protection rating declared in the product specification (IP67).

**Objective:** Ingress of water in harmful quantity shall not be possible when the enclosure is immersed in water under defined conditions of pressure and time (up to 1 m of submersion).

**Test Equipment:** 6" diameter glass filled with 1 meter of water.

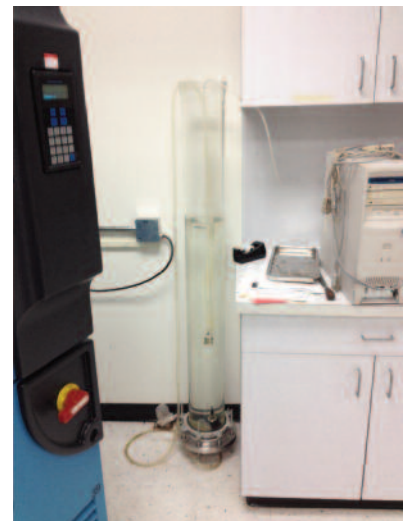
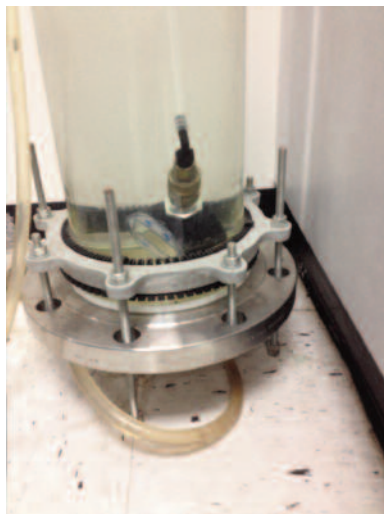


**Test Subject:** Typical DG25 off the production line (pressure range 10,000#).



## DG25 ENVIRONMENTAL TESTING

**Procedure:** Secure the test unit to a tether in order to submerge and retrieve it (in this case the unit was threaded onto a fitting, which was attached to a long length of plastic tubing). Submerge the unit in 1 meter of water for 30 minutes.



## DG25 ENVIRONMENTAL TESTING

**Procedure:** After 30 minutes, remove the unit from the water. Use a compressed air gun to blow-off the exterior of the unit to ensure no false negative results are seen.



**Note:** There are 5 possible entry points for water ingress.

- ① O-ring seal, front window to case
- ② O-ring seal, back cover to case
- ③ O-ring seal, socket to case
- ④ Keypad overlay
- ⑤ Case vent plug

①



②



③



④

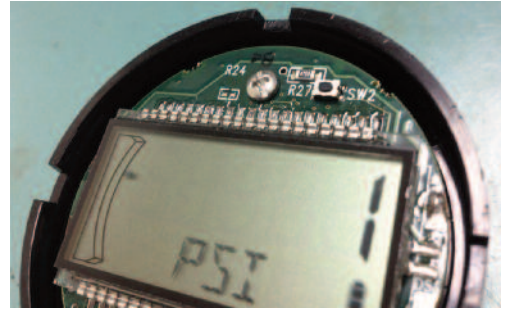
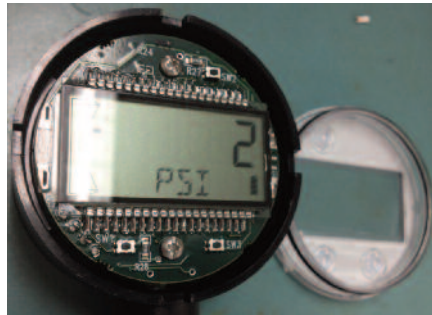


⑤



## DG25 ENVIRONMENTAL TESTING

**Results:** Gauge was completely disassembled and inspected. No signs of water ingress were detected..



**Conclusion:** This test confirms that the DG25 enclosure is compliant with the IP-67 standard. The DG25 gauge can therefore be claimed as an IP-67 rated product.

