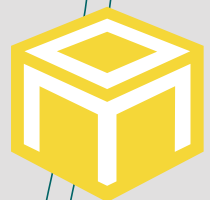


glass boards

PRODUCT GUIDE 2023



MOORECO™

Why choose



Performance

Ultra smooth glass surface naturally provides ease of use. You can use a wide variety of pens and pencils with ease and with no worries of staining or ghosting.



Durability

Made with tempered safety glass that is much stronger than standard glass. Will stand the test of time. Backed with a steel core for added strength and structural integrity.



MooreCo Inc.

2885 Lorraine Avenue | Temple, TX 76501

p: 800.749.2258 | f: 866.888.7483

www.moorecoinc.com

©2022-2023 MooreCo, Inc. All rights reserved.

MooreCo, Inc. reserves the right to correct pricing or copy errors.

Due to the current volatility in the price of raw and finished materials, please refer to our web site for the latest price list for pricing. Since individual items are subject to availability of materials from our suppliers, we reserve the right to limit quantities.

All shipping weights are nominal and may vary depending on items and quantities ordered. When ordering please contact MooreCo customer service at 1-800-749-2258 for accurate shipping rates and lead times.

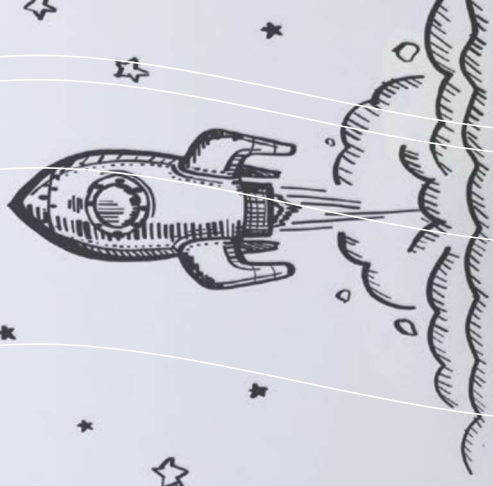
GO ON A BUSINESS TRIP → COLLECT ALL OF THE RECEIPTS → FINISH THE TRIP → FILL OUT EXPENSES FORM → SUBMIT THE FORM

- POLICIES
- COST CENTERS
- JUSTIFICATIONS

→ PEOPLE OFTEN LOSE RECEIPTS!
 → YOU NEED TO CAREY RECEIPTS AROUND WITH YOU

- APPROVE
- SEND EVERYTHING TO FIN DEPT

Startup



Steel-backed glass surface accepts rare earth magnets!



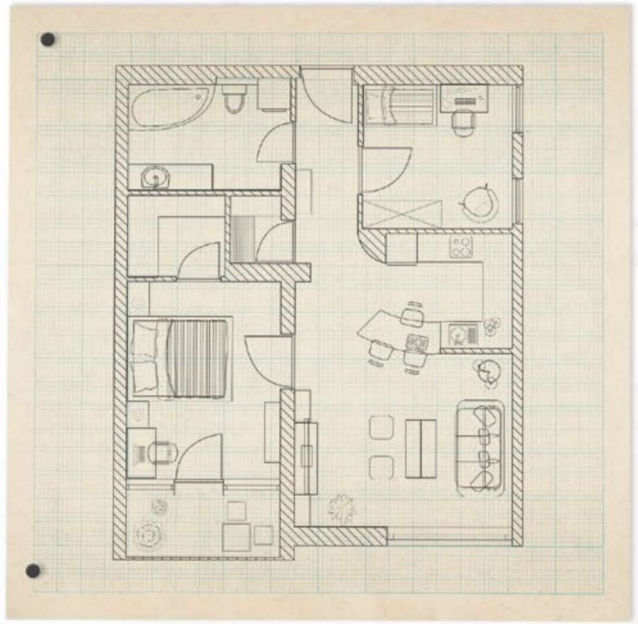
Visionary® Hierarchy Magnetic Glass Board

- Reflect on your true colors. Ultra modern glass boards now available in multiple colors to accentuate any space.
- Modernize your space with a functional and contemporary image. Visionary Hierarchy magnetic glass boards provide the best of a quality whiteboard with smart style.
- Borderless and seamless, the board is available in fresh modern colors to match your environment and our line of Hierarchy furniture.
- Tempered safety glass ideal for use in any environment. Compatible with any dry erase or wet erase marker, grease pen, etc. Easily cleans without ghosting or staining. Accepts rare earth magnets.
- Attractive stainless steel mounting standoffs. Mounts are standard with a silver finish, but accessory mounts now available with a brass finish for an upgraded appearance (purchase separately).
- Includes aluminum accessory tray and set of magnets. Glass accessory tray available separately.
- Fifty year limited warranty.
- SCS Indoor Advantage Gold Certified.

PART NO.	DIMENSIONS	SHIP WT.
VISIONARY HIERARCHY BOARD - 3'H X 4'W		
83844-RED	35.4"H x 47.2"W	42 lbs
83844-ORANGE	35.4"H x 47.2"W	42 lbs
83844-YELLOW	35.4"H x 47.2"W	42 lbs
83844-GREEN	35.4"H x 47.2"W	42 lbs
83844-BLUE	35.4"H x 47.2"W	42 lbs
83844-NAVY	35.4"H x 47.2"W	42 lbs
83844-PURPLE	35.4"H x 47.2"W	42 lbs
VISIONARY HIERARCHY BOARD - 4'H X 6'W		
83845-RED	47.2"H x 70.9"W	79 lbs
83845-ORANGE	47.2"H x 70.9"W	79 lbs
83845-YELLOW	47.2"H x 70.9"W	79 lbs
83845-GREEN	47.2"H x 70.9"W	79 lbs
83845-BLUE	47.2"H x 70.9"W	79 lbs



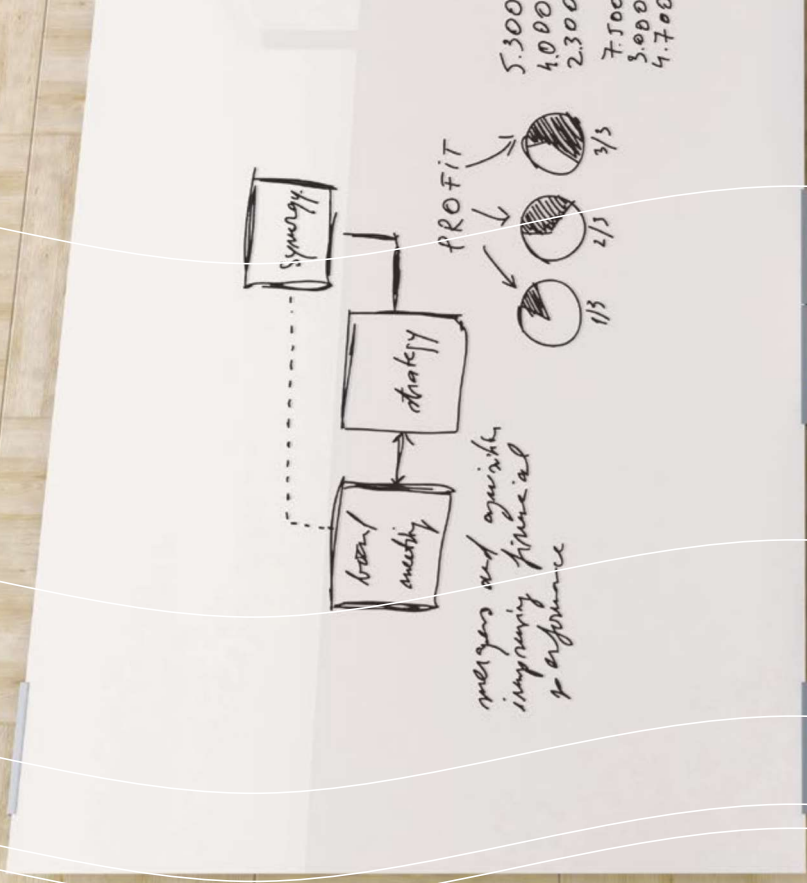
Steel-backed glass
surface accepts rare
earth magnets!

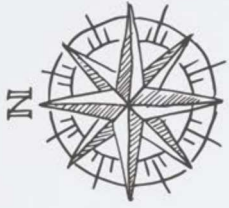




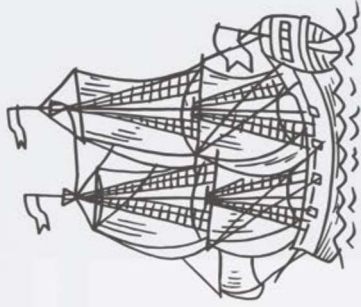
Visionary® Magnetic Glass Board + Exo Tray System

- Upgrade your expectations. Finally a glass board with an ultra stylish accessory tray.
- Modernize your space with a functional and contemporary image. Visionary magnetic glass boards provide the best of a quality whiteboard with smart style.
- Compatible with any dry erase or wet erase marker, grease pen, etc. Easily cleans without ghosting or staining. Accepts rare earth magnets. Includes set of magnets.
- Tempered safety glass ideal for use in any environment. Available in gloss white or standard and custom color options. Custom graphics printing available.
- Now available with the Exo Tray System, providing clean and functional anodized aluminum accessory storage in an ultra fashionable package.

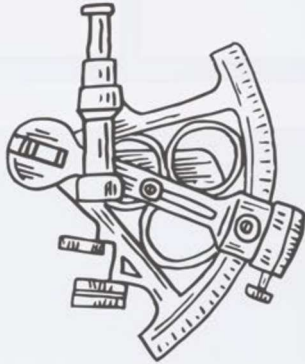




Discovery
of
America
1492



"Sextant"
the device
of
astronomical
navigation

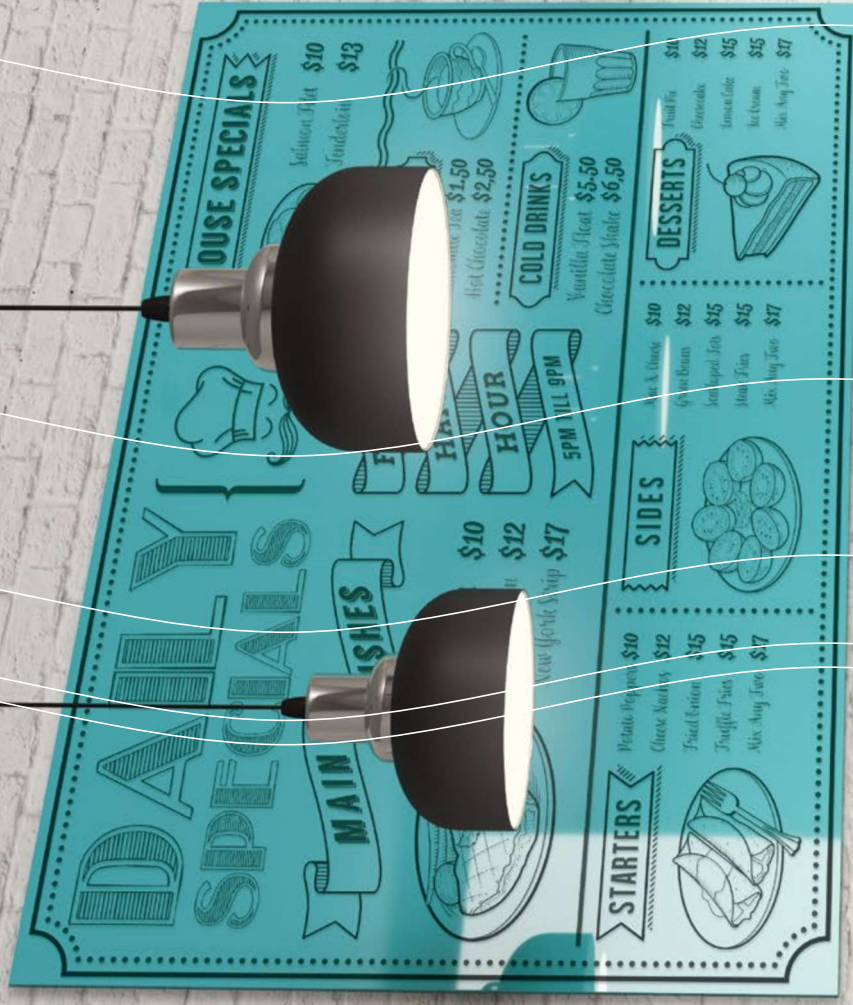




Custom Graphic Wall Mount & Mobile Glass Boards

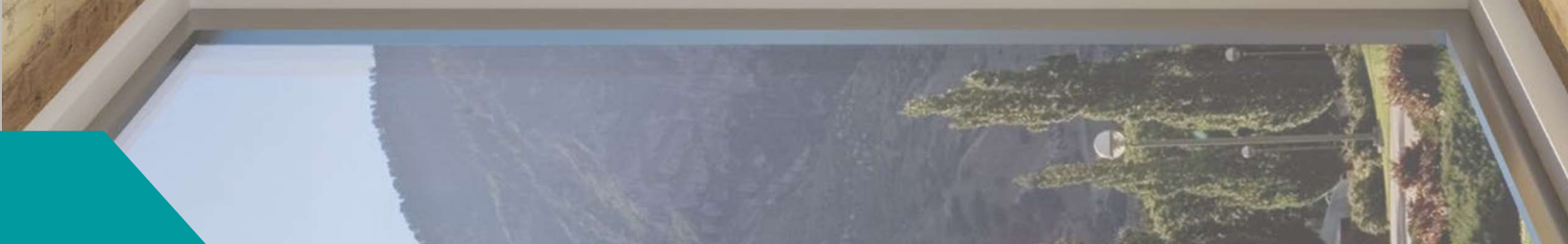
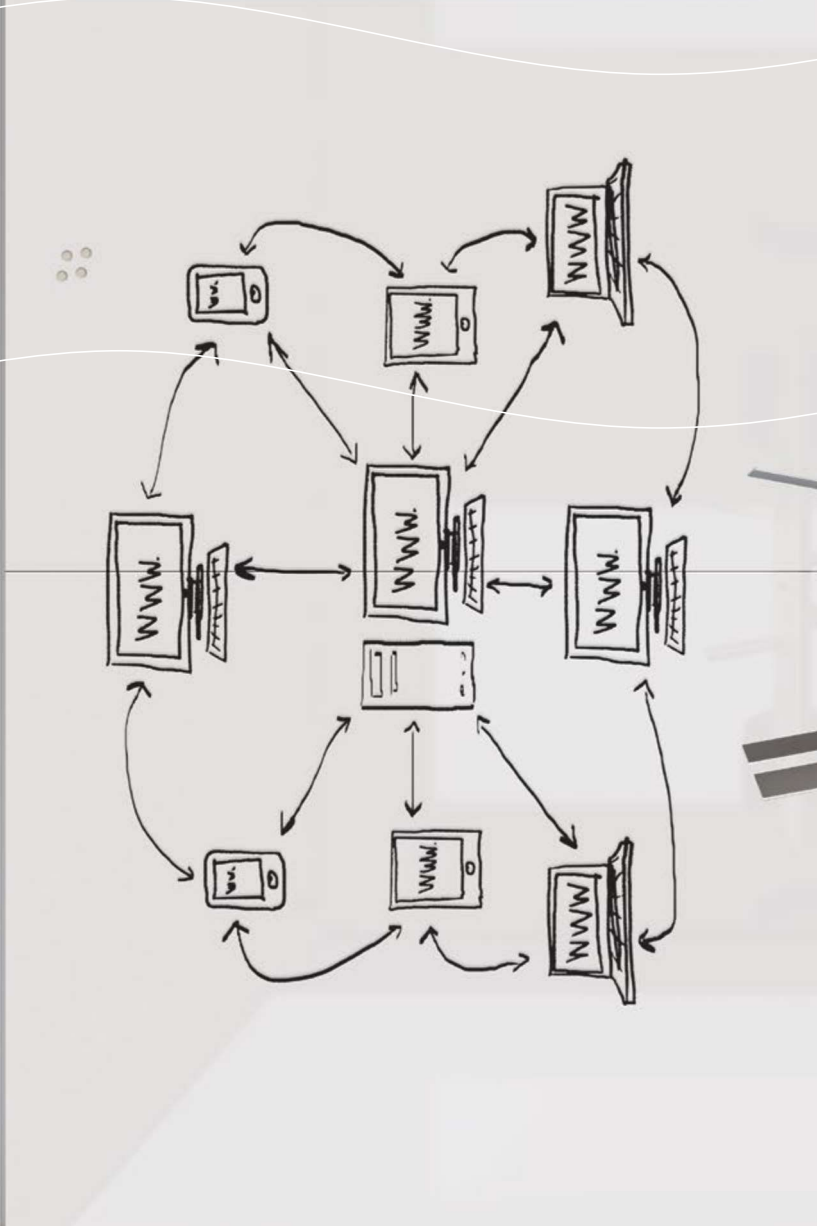
Take individuality, branding, and personalization to the next level by creating your very own bespoke graphic glass board. With the modern appeal of glass dry erase, your design will be elevated into something unique and unforgettable, while maintaining all the functionality you expect from a MooreCo glass board.

- Compatible with any dry erase or wet erase marker, grease pen, etc. Easily cleans without ghosting or staining. Accepts rare earth magnets. Includes set of magnets.
- Tempered safety glass ideal for use in any environment. Available in gloss white or standard and custom color.



THE ART OF SOCIAL MEDIA CONTENT CREATION
The Ultimate Guide from Idea Creation to Execution

48 PAGES incl. BONUS CONTENT
5 EXPERT INTERVIEWS



Liso Classroom Glass Wall System

- Turn your blank walls into something extraordinary with purpose. Liso Classroom Glass Wall System is engineered to incorporate the best qualities of magnetic glass markerboards with a modular full wall whiteboard.
- Create a user-friendly room-sized presentation surface. System will elevate your walls with functional whiteboard space, ideal for communication, collaboration, and creativity.
- Glass is available standard in gloss white, or in any of our standard glass colors. Create one sleek monochrome wall, or mix and match for a designer appearance. Custom colors and graphics also available.
- Liso features a full-length tackable map rail along the top edge, and a full-length anodized aluminum accessory tray along the bottom for storing markers and erasers.
- Please note:** Glass wall construction cannot accommodate cut outs for outlets or light switches.
- Fifty year limited warranty. SCS Indoor Advantage Gold Certified.

PART NO.	DIMENSIONS	SHIP WT.
GLOSS WHITE		
GWB406-GLOSSWHITE	4H x 6W	79 lbs
GWB408-GLOSSWHITE	4H x 8W	104 lbs
GWB412-GLOSSWHITE	4H x 12W	170 lbs
GWB416-GLOSSWHITE	4H x 16W	224 lbs





Rapport Basic Glass Wall System

- Turn your blank walls into something extraordinary with purpose. Rapport Basic Glass Wall System is engineered to incorporate the best qualities of magnetic glass markerboards with a modular full wall whiteboard.
- Create a user-friendly room-sized presentation surface. System will elevate your walls with functional whiteboard space, ideal for communication, collaboration, and creativity.
- Glass is available standard in gloss white, or in any of our standard glass colors. Create one sleek monochrome wall, or mix and match for a designer appearance. Custom colors and graphics also available.
- Rapport features stainless steel mounting standoffs along the top edge, and a full-length anodized aluminum accessory tray along the bottom.
- **Please note:** Glass wall construction cannot accommodate cut outs for outlets or light switches.
- Fifty year limited warranty. SCS Indoor Advantage Gold Certified.

PART NO.	DIMENSIONS	SHIP WT.
GLOSS WHITE		
GWA406-GLOSSWHITE	4H x 6W	79 lbs
GWA408-GLOSSWHITE	4H x 8W	104 lbs
GWA412-GLOSSWHITE	4H x 12W	170 lbs
GWA416-GLOSSWHITE	4H x 16W	224 lbs

"TAIL WAGGIN' TUESDAY"

Let your child read to a dog
to help build confidence as
well as reading skills!

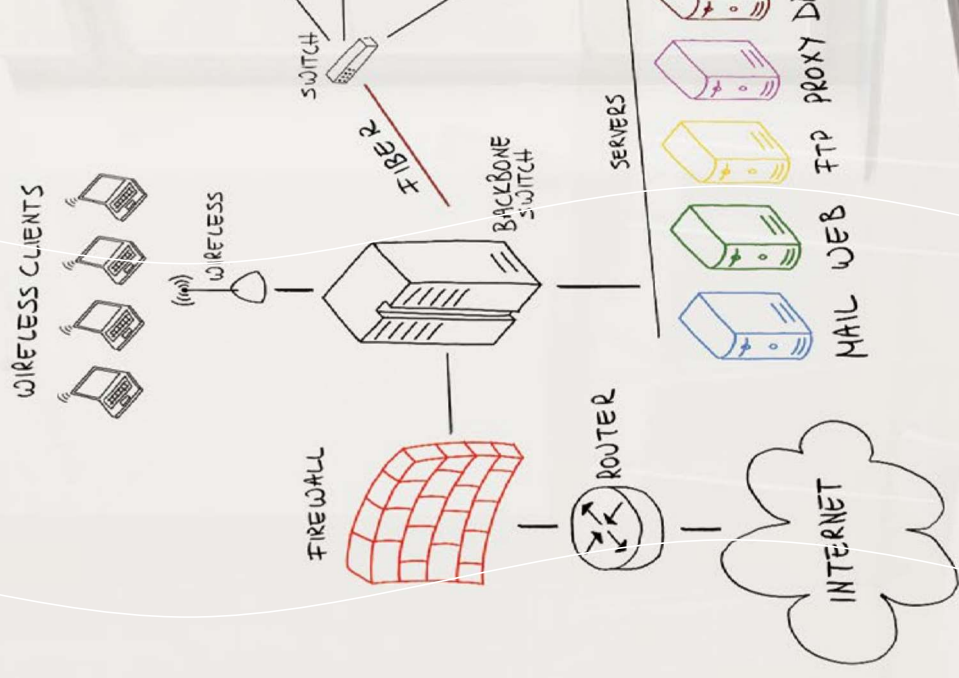


See any librarian for details
and sign up sheet!



D.O.C. Glass Mobile Room Divider

- Divide and conquer with style. Get all of the functionality of a D.O.C. with a sleek and modern magnetic glass surface.
- Fresh modern style enhances creativity in your work environment. Pairing elegant magnetic glass whiteboard with a mobile aluminum frame, D.O.C. Glass Mobile Room Dividers allow you the freedom to divide, organize, and customize your space to fit your individual needs.
- Modular panels move wherever needed to create whatever space is needed; locking swivel casters keep them in place. Two sizes available for maximum configuration flexibility: 6'H x 4'W or 6'H x 6'W
- Double-sided in tempered safety glass to provide smooth writability and erasability. Glass is backed with steel to accept rare earth magnets.
- Divider comes standard with gloss white glass, but you can customize the glass panel in a variety of ways to personalize your workspace, including color and graphic printing options.
- Panels are trimmed in modern anodized aluminum to best enhance your environment.
- Leg design minimizes gapping, and connectors are available to join panels at or 180° angles. Base includes locking casters.

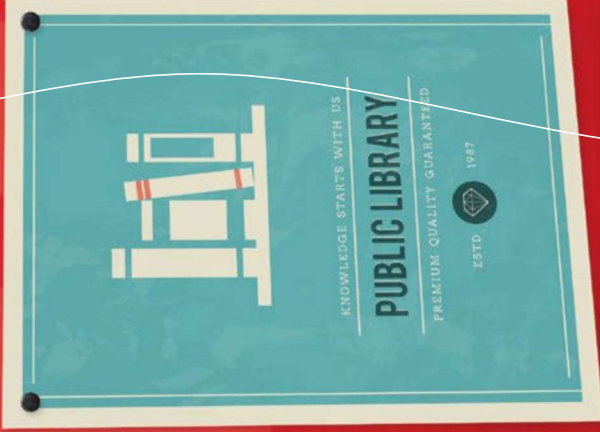


☆ Let's Do Some
Maker Space Exploration!

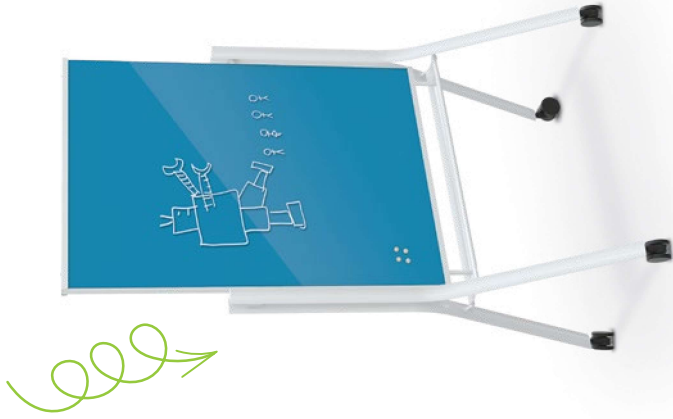
Create, Design, & Learn

Alice P. Marshall Room
Tuesdays 4:00 - 5:45

Ages 8-13



Mix and Match! All reversible glass boards available in two colors!



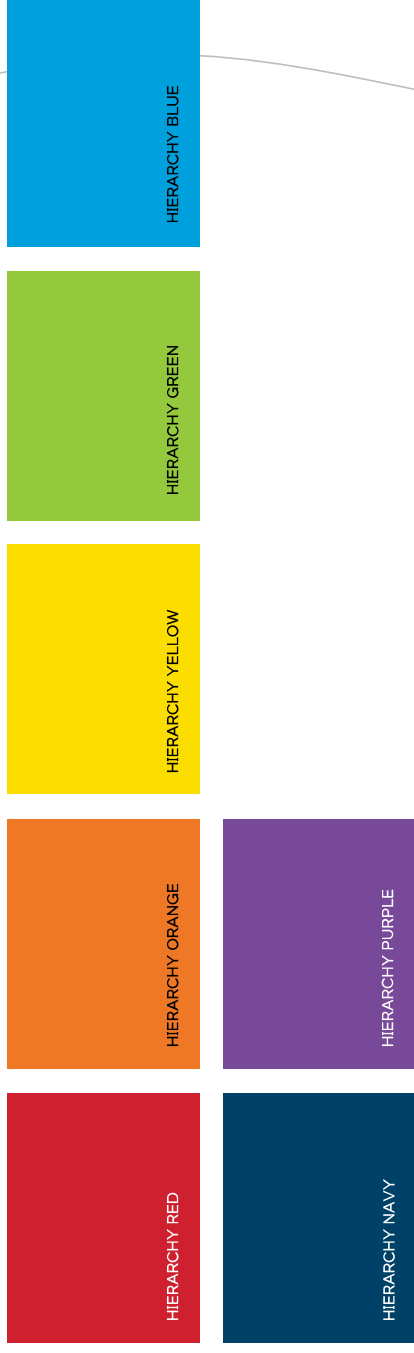
Visionary® Curve Colors Mobile Glass Board

- Get your colors to go. Mobile glass markerboard is stylish and available in multiple color options.
- Get up to twice the functional space of a wall-mounted board with a versatile and stylish Visionary Curve Colors mobile magnetic glass board, with a modern white frame and colored glass options.
- Panel is beautiful and modern double-sided magnetic glass, giving you style as well as a surface that provides unmatched writability and erases without ghosting.
- Glass available in multiple colors. Choose the color that will accent the design of your environment. Mix and match for an even more personalized board. Custom colors and graphics available.
- Tempered safety glass surface measures 47-1/4"H x 35-1/2"W and accepts rare earth magnets.
- Frame and trim are made with white powder-coated steel for superior durability. Wide base design for stability includes dual-wheel locking casters.
- SCS Indoor Advantage Gold Certified.



Standard Glass Colors:

Hierarchy by MooreCo Collection (QuickShip: most products ship in 10 days or fewer.)



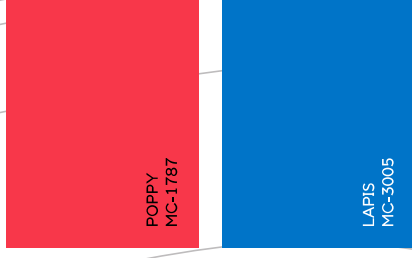
Custom Glass Colors:

The colors in any given space immediately influence mood and mental response, and can be used to foster creativity, focus, relaxation, and more. Because we understand how much goes into choosing just the right colors for your spaces, we are pleased to offer a wide spectrum of custom glass board colors, all available in 90 days or less, with minimal MOQs.

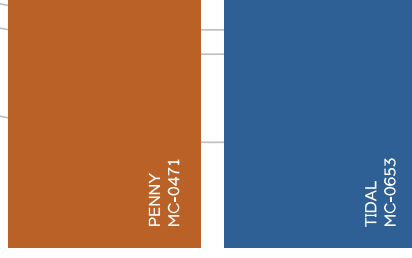
Daybreak Collection



Daylight Collection



Twilight Collection



Midnight Collection



Appendix: Specified Fabrics & Finishes

Please note: fabrics and finishes are chosen for illustration purposes only and do not necessarily represent accurate scale, color, or best purpose of use. Please consult with our professional design team before selecting fabrics and finishes for your space.

Page	Product	Fabric / Finish
4-5	Hierarchy Activity Table	Laminate: Florence Walnut / Edge Band: Custom Brown
6-7	Double Bench	Fabric: Gatsby Zest
8-9	Elate Electric Desk	Laminate: Grey Elm / Edge Band: Platinum
10-11	Modular Conference Table	Laminate: Asian Night / Edge Band: Black
12-13	Avid Instructor Desk	Laminate: Fusion Maple / Edge Band: Platinum
14-15	Frequency X-Base Table	Laminate: Raw Eucalyptus / Edge Band: Self Edge
	Elevate Wind Cube	Fabric: Brink Mission
	Elevate Wind Wedge Pillow	Fabric: Brink Mission
	Elevate Wind Lounge Chair	Fabric: Croquet Navy
16-17	MediaSpace Table - Large	Laminate: Ghost Maple / Edge Band: Black
18-19	Avid Modular Desk	Laminate: Grey Elm / Edge Band: Navy
	Snap Desk	Laminate: Grey Elm / Edge Band: Navy
20-21	Elate Electric Desk	Laminate: Asian Sun / Edge Band: Platinum
22-23	Sofa	Fabric: Faux Mo Marine
	Triple Bench	Fabric: Lucio Ibiza
24-25	High Back Loveseat	Back + Arms: Cover Cloth Navel / Seat: Halo Lemongrass
	Blossom Petals	Fabric: Infinity Rhise
	Blossom Center	Fabric: Infinity Papaya
	Double Bench	Fabric: Coutout Aspen
26-27	D.O.C. Glass	Kickplate: Grey Elm
28-29	Hierarchy Activity Table	Laminate: Grey Elm / Edge Band: Blue, Green, Red
	Schoolworks Bookcase Storage	Laminate: 5th Avenue Elm



MooreCo Inc.
2885 Lorraine Avenue | Temple, TX 76501
p: 800.749.2258 | f: 866.888.7483
www.moorecoinc.com