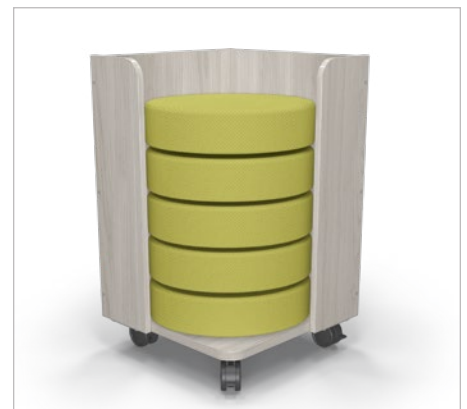


# DOT CART

Mobile Soft Seating Storage



- Easily store Dots and seat pads to keep your spaces organized and tidy with our Dot Cart.
- Available in four configurations to suit your needs: single and double capacity available for 15" and 18" wide Dots or seat pads.
- The single holds up to five Dots or nine 3" seat pads, while the double holds up to ten Dots or eighteen 3" seat pads.
- Each Dot Cart comes in attractive and neutral Grey Elm laminate. Easily mobile with 3" dual-wheel casters (two locking).
- SCS Indoor Advantage Gold Certified.

PART NO.	ITEM	DIMENSIONS	SHIP WT.
20702	Dot Cart Single (15 in)	31.8"H x 17"W x 17"D	41 lbs
20703	Dot Cart Double (15 in)	31.8"H x 33"W x 17"D	61 lbs
20704	Dot Cart Single (18 in)	31.8"H x 20"W x 20"D	46 lbs
20705	Dot Cart Double (18 in)	31.8"H x 39"W x 20"D	70 lbs

Shipping weights are listed on a per item basis and may vary based on quantities ordered.  
 \*Ships UPS.  
 \*\*Ships UPS with large package surcharge or additional handling fee.



MOORECO INC  
 2885 Lorraine Avenue | Temple, TX 76501  
 p: 800.749.2258 | f: 866.888.7483  
[moorecoinc.com](http://moorecoinc.com)