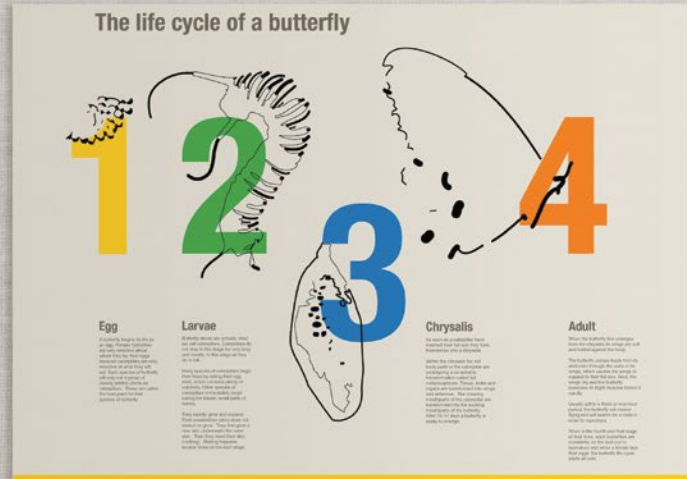
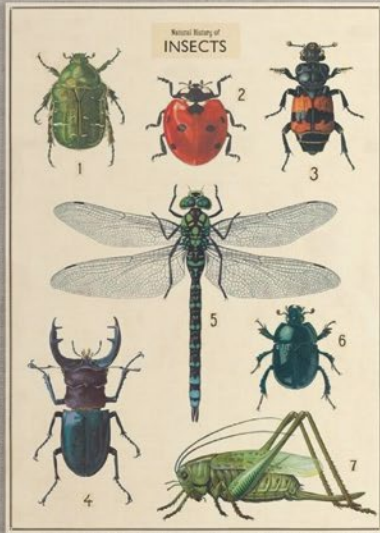


# VIN-TAK TACKBOARD

with Aluminum Trim

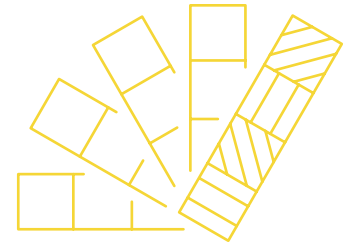


Get on board with durability and style.

Vinyl fabric over a tackable substrate for a board with long lasting appeal.



MOORECO™



This product comes in multiple colors! View our most up-to-date fabric and finish swatch catalog online by clicking the button below:

[VIEW MATERIAL LIBRARY](#)

VINYL COLOR OPTIONS:



Champagne  
41



Gray  
44



Cotton  
46



Pacific Blue  
47



Platinum  
56



Sterling  
77

## VINYL TACKBOARD - ALUMINUM TRIM

- Get on board with durability and style. Vinyl fabric over a tackable substrate for a board with long lasting appeal. Fabric-backed vinyl over a tackable substrate makes a low-maintenance and attractive tackboard. An easy to clean surface, the vinyl is treated to resist the growth of odor- and stain-causing microbes.
- Choose from three substrate options to fit your requirements or budget:
- **Vin-Tak:** Our most economical and best value surface, Vin-Tak features vinyl adhered to 7/8" lightweight and tackable substrate material.
- **Vinyl Add-Cork:** Step up to our select Add-Cork surface, which features vinyl adhered to a 1/8" thick cork layer bonded to 3/8" thick durable substrate material.
- **Vinyl Cork-Plate:** Premium Cork-Plate surface is our top of the line option, featuring vinyl adhered to a full 1/4" thick cork layer bonded to 1/4" thick rigid and moisture-resistant substrate material.
- Featured with standard 7/8" clear anodized aluminum trim with hairline mitered corners. Anodized black aluminum trim available at an upcharge.
- Ten year limited warranty. SCS Indoor Advantage Gold Certified.

## VINYL TECHNICAL INFORMATION

- Vinyl tackboards are fade-resistant and are easily cleaned with detergents and water.
- The vinyl covering meets or exceeds all requirements of Federal Specifications CCCW-408A Quality Standard for Vinyl Coated Fabric Wallcovering CFFA-W-101A, and the Standard Classification of Wallcoverings by Durability Characteristics of ASTM-F-793-82 for the type and category classified, including 24 hour cleanability tests based on ASTM method D1308.
- The vinyl is treated with an antimicrobial to resist the growth of mildew and bacteria.

PART NO.	DIMENSIONS	SHIP WT.
<b>VIN-TAK</b>		
311AA*	1.5H x 2W	5 lbs
311AB*	2H x 3W	14 lbs
311AC**	3H x 4W	22 lbs
311AD	4H x 4W	41 lbs
311AF	4H x 5W	48 lbs
311AG	4H x 6W	52 lbs
311AH	4H x 8W	63 lbs
311AK	4H x 10W	75 lbs
311AM	4H x 12W	110 lbs

PART NO.	DIMENSIONS	SHIP WT.
<b>VINYL ADD-CORK</b>		
312AA*	1.5H x 2W	6 lbs
312AB*	2H x 3W	12 lbs
312AC**	3H x 4W	20 lbs
312AD	4H x 4W	39 lbs
312AF	4H x 5W	46 lbs
312AG	4H x 6W	49 lbs
312AH	4H x 8W	64 lbs
312AK	4H x 10W	71 lbs
312AM	4H x 12W	104 lbs

PART NO.	DIMENSIONS	SHIP WT.
<b>VINYL CORK-PLATE</b>		
313AA*	1.5H x 2W	6 lbs
313AB*	2H x 3W	14 lbs
313AC**	3H x 4W	22 lbs
313AD	4H x 4W	44 lbs
313AF	4H x 5W	55 lbs
313AG	4H x 6W	66 lbs
313AH	4H x 8W	88 lbs

Shipping weights are listed on a per item basis and may vary based on quantities ordered. All boards listed as 3'H x 4'W actually measure 33.8"H x 48"W due to shipping restrictions.

\*Ships UPS.

\*\*Ships UPS with large package surcharge or additional handling fee.



MOORECO INC.  
2885 Lorraine Avenue | Temple, TX 76501  
p: 800.749.2258 | f: 866.888.7483  
[moorecoinc.com](http://moorecoinc.com)