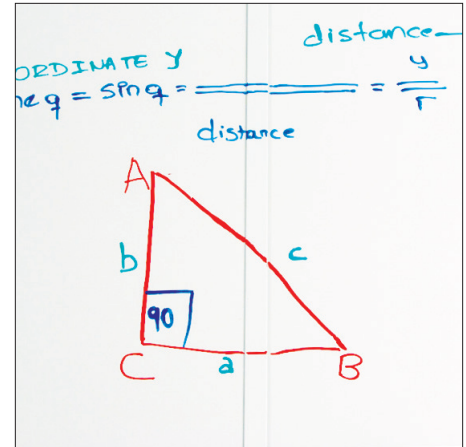


Porcelain Steel Self-Adhesive Skins

Whiteboard Resurfacing Material



205 Westwood Ave, Long Branch, NJ 07740
 Phone: 866-94 BOARDS (26273) / (732)-222-1511
 Fax: (732)-222-7088 | E-mail: sales@touchboards.com



Porcelain Steel Self-Adhesive Skins

- Replace or renew any torn or worn board with magnetic dry erase Porcelain Steel Self-Adhesive Skins, designed to make markerboard resurfacing easy, with no mess or fumes.
- High quality skins are made from 24-gauge steel. Standard gloss porcelain provides superior writability and erasability with no ghosting. Reduced surface light distortion enhances visibility to provide optimum eye comfort.
- Also available with fine-tooth abrasive porcelain steel chalkboard finish.
- Self-adhesive skins feature a peel-and-stick backing that applies easily to an existing board. Writable and erasable cover bar available to hide seams.
- CAUTION: Self-stick adhesive is intended for resurfacing on an existing board surface and has not been tested for use on other materials.
- Made in the USA. TAA compliant. Fifty year limited warranty on porcelain steel surface material.



Part No.	Description	Product Dimensions	Ship Wt.
Porcelain Steel Self-Adhesive Skin			
208SD	Porcelain Steel Self-Adhesive Skin	4'H x 4'W	56 lbs
208SG	Porcelain Steel Self-Adhesive Skin	4'H x 6'W	84 lbs
208SH	Porcelain Steel Self-Adhesive Skin	4'H x 8'W	112 lbs
208SK	Porcelain Steel Self-Adhesive Skin	4'H x 10'W	140 lbs
208SM	Porcelain Steel Self-Adhesive Skin	4'H x 12'W	168 lbs
Optional Accessories			
80-TM	Cover Bar	per linear foot	1 lb
545*	Panel Roller	9"H x 9"W	5 lbs

*Ships UPS
 Shipping weights are listed on a per item basis and may vary based on quantities ordered.



MooreCo | Balt | Best-Rite
 2885 Lorraine Avenue | Temple, TX 76501
 P. 800.749.2258 | F. 866.888-7483
www.moorecoinc.com