

ROUND & SQUARE STOOL



MOORECO™



CONSTRUCTION & FEATURES:

- Handsome versatile stools and ottomans come in a variety of sizes and shapes, and coordinate flawlessly with soft seating furniture choices.
- Top stitched sewing details in upholstery. Textiles available through graded-in fabric program, or COM by approval. Aluminum legs on round stool and square stool. Black vinyl base on pouf stool.
- Table versions with optional integrated electrical USB and 110v outlets.
- Manufactured in the USA from commercial grade 3/4" plywood and hardwoods.
- Tables feature 1" MDF core with a variety of HPL laminate and edge band options.
- Twelve year limited warranty on seating and five years for table versions. SCS Indoor Advantage Gold Certified.
- Prop 65 and CAL 117-2013 compliant. 400 lb. capacity.

AVAILABLE UPGRADES:



Two or more fabrics



CAL 133 Compliance



Moisture Barrier

PRODUCT LINE:

Round Stool – Low
980L



15"H x 18"W x 18"D • 20 lbs

Round Stool – Medium
980M



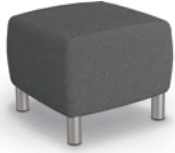
20"H x 18"W x 18"D • 23 lbs

Round Stool – High
980H



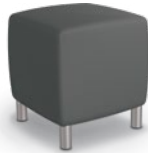
24"H x 18"W x 18"D • 26 lbs

Square Stool – Low
990L



15"H x 18"W x 18"D • 20 lbs

Square Stool – Medium
990M



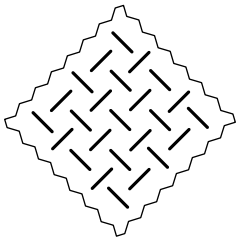
20"H x 18"W x 18"D • 23 lbs

Square Stool – High
990H



24"H x 18"W x 18"D • 26 lbs

FABRIC OPTIONS:



We partner with several top textile manufacturers to offer you a wide array of fabric choices. A full list of graded-in fabrics is available at moorecoinc.com/price-guides. COM fabrics available on approval.

[VIEW FABRIC GUIDE](#)



MOORECO™

MOORECO INC
2885 Lorraine Avenue | Temple, TX 76501
p: 800.749.2258 | f: 866.888.7483
moorecoinc.com

Soft seating ships FOB Tennessee
Rev 06-24-2022