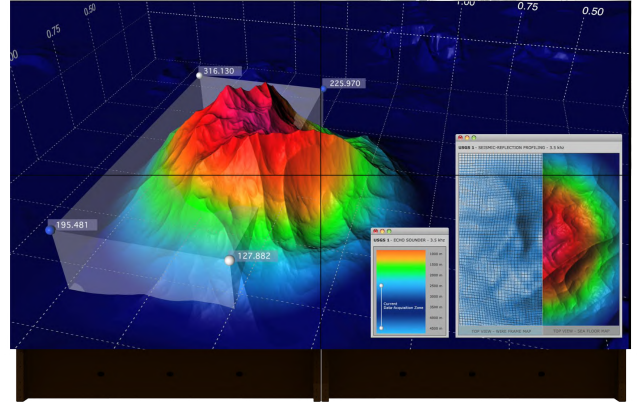




# Clarity Margay II 50"

## Rear Projection Video Wall Displays

The Clarity™ Margay II 50" rear projection video wall display incorporates state-of-the-art DLP® technology to create stunning HD video performance, impressive vibrant color and high brightness. The Clarity Margay II provides superior video wall performance with 1920 x 1080p resolution and Planar's BrilliantColor® technology in a slim profile for space-constrained control rooms. Clarity Margay II's design enable ease of service and maintenance, resulting in an overall lower cost-of-ownership and making Clarity Margay II an attractive seamless video wall solution.



SPECIFICATION	DETAIL
Diagonal Size	50"
Dimensions (W x H x D)	43.6" (110.8 cm) x 32.5" (82.5 cm) x 18.1" (46.0 cm)
Display Weight	91lbs/41.5 kg
Brightness (PrecisionView 2 Screen (PV2))	400 cd/m2 ftL
Brightness Light Output	640 ANSI Lumens
Resolution	Full HD 1080p (1920 x 1080)
Aspect Ratio	16:9
Imaging Technology	DLP Smooth Picture™ with BrilliantColor™ Technology
Overscan	+/- 4%
Lamp System	Single lamp
Lamp Wattage	132 watts
Lamp life (median)	10,000 Hrs (Lamp manufacturer specification at IEC 61947-1 test conditions)
Screen Type	Precision View-2 (PV2)
Full viewing angle	180°
Border (typical)	0
Screen gap (typical)	< 0.7 mm image to image
Auto color and brightness balancing	Optional SiFi™ ACB
Brightness uniformity (w/correction)	> 90%

<b>Contrast Ratio</b>	2000:1
<b>Power Consumption (typ)</b>	170 W typical
<b>Operating temperature range</b>	10-35°C
<b>Operating humidity range</b>	20 to 80% non-condensing
<b>Serviceability</b>	Full Front and Rear Access
<b>Colors</b>	16.7 million
<b>Color Gamut</b>	> 77% NTSC, 105% EBU
<b>Safety regulations</b>	FCC Class A, EN55022/CISPR22, ICES-003, CNS 13438, EN55024, EN60950, RoHS
<b>Maximum Stacking</b>	6 (Consult Planar for additional rows. Video walls stacked 3 high or taller should be tied back)
<b>Inputs</b>	VGA to FHD (1920x1080 @ 60Hz); Analog: D-Sub 15 pin connector with loop through; Digital: DVI-D with loop through; Video: SDI, Composite, S-Video, Component-HD (all w/loop through)
<b>Control</b>	WallNet, RS-232, IR remote control



205 Westwood Ave, Long Branch, NJ 07740  
 Phone: 866-94 BOARDS (26273) / (732)-222-1511  
 Fax: (732)-222-7088 | E-mail: [sales@touchboards.com](mailto:sales@touchboards.com)