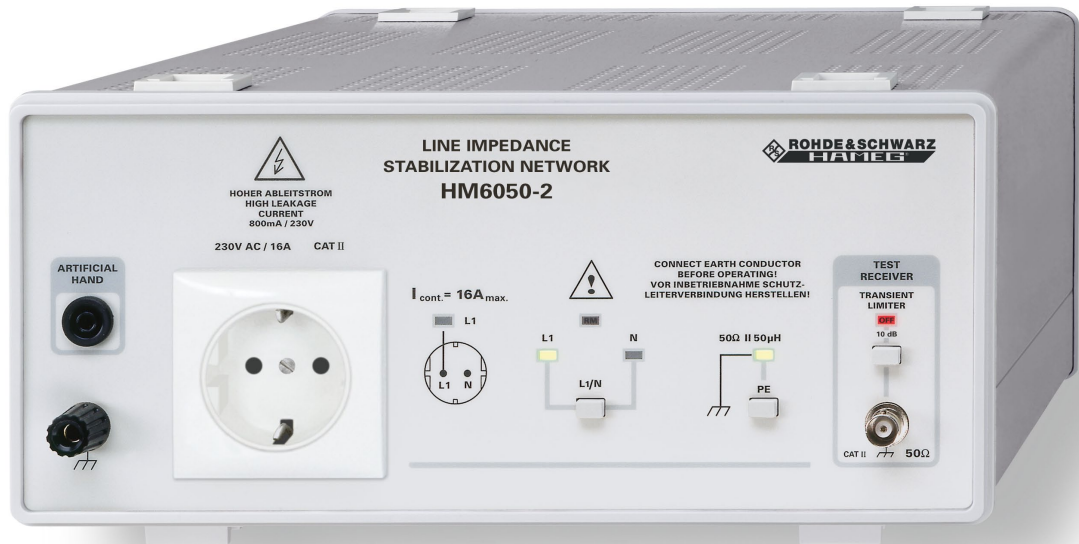


Line Impedance Stabilization Network HM6050-2

HM6050-2

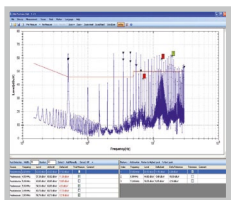


- Measurement of Line-conducted Interferences within the Range from 9kHz...30MHz (CISPR 16)
- Selectable Transient Limiter
- Artificial Hand Connector

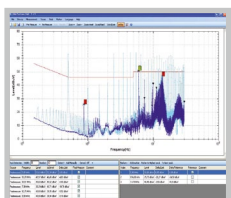
HM6050-2K
(UK Version, 230V)
HM6050-2S
(US Version, 115V)



Measurement of Line-conducted Interference: Fail



Measurement of Line-conducted Interference: Pass



Technical Specifications at 23°C ±2°C

Frequency Range:	9kHz...30MHz
Impedance Characteristics:	$Z = 50\Omega \parallel (50\mu\text{H} + 5\Omega)$, Error <20% under terms of VDE 876T1
Max. Current:	16A
Line Voltage/Frequency:	230V/50...60Hz, CAT II
Artificial Hand:	220pF + 511Ω
PE (selectable):	50μH 50Ω

Transient Limiter

Frequency Range:	150kHz...30MHz
Transmission Loss:	10dB (+1.5/-0.5dB)

Connectors

Measurement Output:	50Ω BNC
Power Supply Socket for DUT:	Standard German (UK, US) wall outlets
Artificial Hand:	4mm banana socket
Line Cord:	fixed

Miscellaneous

Operating Temperature:	10...40°C
Power Supply:	HM6050-2D (DE Version) 230V ±10%, 50...60Hz HM6050-2K (UK Version) 230V ±10%, 50...60Hz HM6050-2S (US Version) 115V ±10%, 50...60Hz
Safety Class:	Safety class I (IEC1010-1/VDE 0411)
Dimensions and Weight:	285 x 125 x 380mm (W x H x D), approx. 6kg