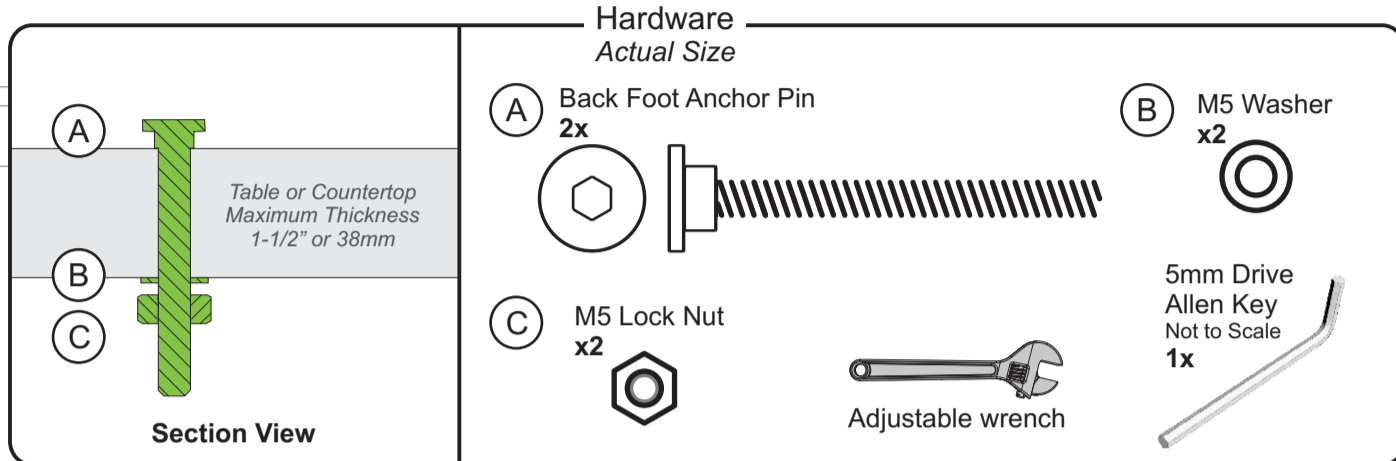
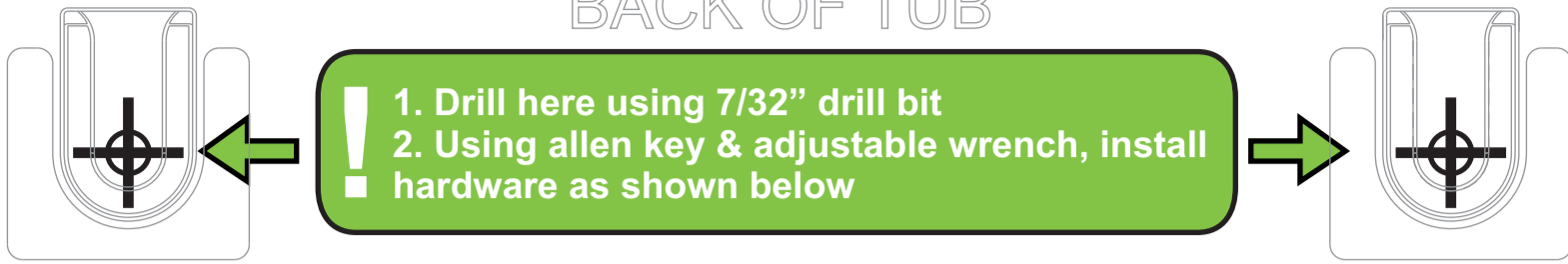


Tech Tub²® Locking System Template

REMOVE TEMPLATE FROM AI BEFORE INSTALLATION PROCESS

BACK OF TUB



★ READ THIS FIRST ★

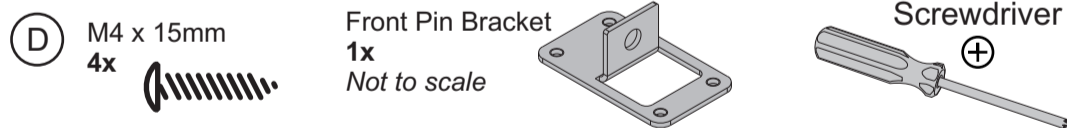
Additional tools required:



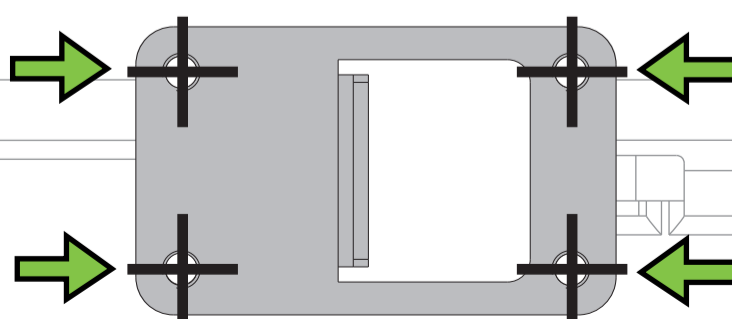
Before beginning, you should:

1. Squarely align template on surface
2. Tape template in place before drilling
3. After ALL holes have been drilled, remove template and install hardware as directed

Hardware
Actual Size



1. Drill here using 1/8" drill bit
2. Place Front Pin Bracket seen below
3. Using a screwdriver, install M4 x 15mm screws



FRONT OF TUB

REMOVE TEMPLATE FROM AI BEFORE INSTALLATION PROCESS

REMOVE TEMPLATE FROM AI BEFORE INSTALLATION PROCESS