



Touchboards

205 Westwood Ave, Long Branch, NJ 07740
Phone: 866-94 BOARDS (26273) / (732)-222-1511
Fax: (732)-222-7088 | E-mail: sales@touchboards.com

3D Printer Cart

www.copernicused.com

Copernicus
educational products

3D Printer Cart

As schools begin to explore the exciting capabilities of 3D Printing, the need to properly store the required tools and materials increases. The 3D Printer Cart allows printing equipment to be shared around the school easily and keeps everything that you need close at hand. The Cart is also ideal for libraries where diverse creative activities are undertaken and space is limited.

Highlights

One-stop-shop:

The cart has been designed to store all your 3D printing needs in one user friendly environment. The combination of Open Tubs, Really Big Tubs and a Tech Tub option ensures that equipment of all shapes and sizes can be easily managed.

Compact:

This cart has been designed to ensure that classrooms and libraries can maximize the use of a 3D Printer and not compromise on floor space.

Product features:

- Accommodates 3D printers with a footprint of up to 19.5" W x 26.5" D
- Premium 3D Printer Cart Storage: Tech Tub™ (SKU TEC57) with padlock, 2 Open Tubs and 1 Really Big Tub
- Base 3D Printer Cart Storage: 4 Open Tubs and 1 Really Big Tub
- 4" Casters, 2 locking
- 6 Outlet Power Strip
- Adjustable spool holder (holds maximum of 4 spools)
- Sliding laptop shelf fits laptops up to 17"
- Magnets for attaching accessories to frame



Base 3D Printer Cart (front view)



Base 3D Printer Cart (back view)



Premium 3D Printer Cart (back view)



Premium 3D Printer Cart (front view)



Compact storage - Open Tubs, a Really Big Tub and an optional Tech Tub™



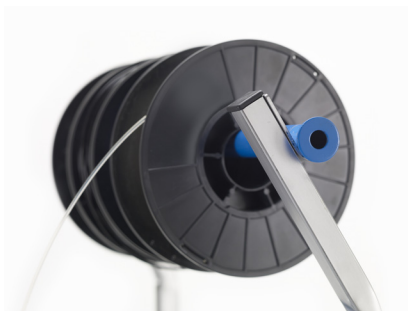
Sliding laptop tray



4" Casters, two locking




Tape holders



Adjustable Spool (holds 4 spools)



Magnetic tool holders

SKU	Product	Description	MSRP 
TD5001	Premium 3D Printer Cart	<ul style="list-style-type: none"> Accommodates 3D printers with a footprint of up to 19.5"W x 26.5" D Tech Tub™ (SKU TEC57) with padlock, 2 Open Tubs and 1 Really Big Tub 4" Casters, 2 locking 6 Outlet Power Strip Adjustable spool holder (holds maximum of 4 spools) Sliding laptop shelf fits laptops up to 17" Magnets for attaching accessories to frame 	\$607.95
TD5000	Base 3D Printer Cart	<ul style="list-style-type: none"> Accommodates 3D printers with a footprint of up to 19.5"W x 26.5" D 4 Open Tubs and 1 Really Big Tub 4" Casters, 2 locking 6 Outlet Power Strip Adjustable spool holder (holds maximum of 4 spools) Sliding laptop shelf fits laptops up to 17" Magnets for attaching accessories to frame 	\$519.75
Dimensions		Warranty	
Frame measures 35-1/2"W x 24-1/2"D x 58-1/2"H (with spool arm) 35-1/2"W x 24-1/2"D x 40-1/2"H (without spool arm)		5 year frame Lifetime tubs 5 years Tech Tub™ and lid and 1 year components	
Maximum printer sizes: To fit between spool arms: 21-1/2"D x 19 1/4"W To fit in front of spool arms: 19 1/2"D x 26 1/2"W			

“You have brains in your head.
You have feet in your shoes.
You can steer yourself in any
direction you choose.”

- Dr. Seuss

Available at

Touchboards

205 Westwood Ave, Long Branch, NJ 07740
Phone: 866-94 BOARDS (26273) / (732)-222-1511
Fax: (732)-222-7088 | E-mail: sales@touchboards.com

Copernicus Educational Products Inc.

Canada

8194 County Road 109, R.R. #3
Arthur, ON N0G 1A0

USA

PMB#459, 60 Industrial Pkwy
Cheektowaga, NY 14227

P: 1-519 848 3664 / Toll free: 1-800 267 8494

F: 1-519 848 5516

E: info@copernicused.com

W: www.copernicused.com