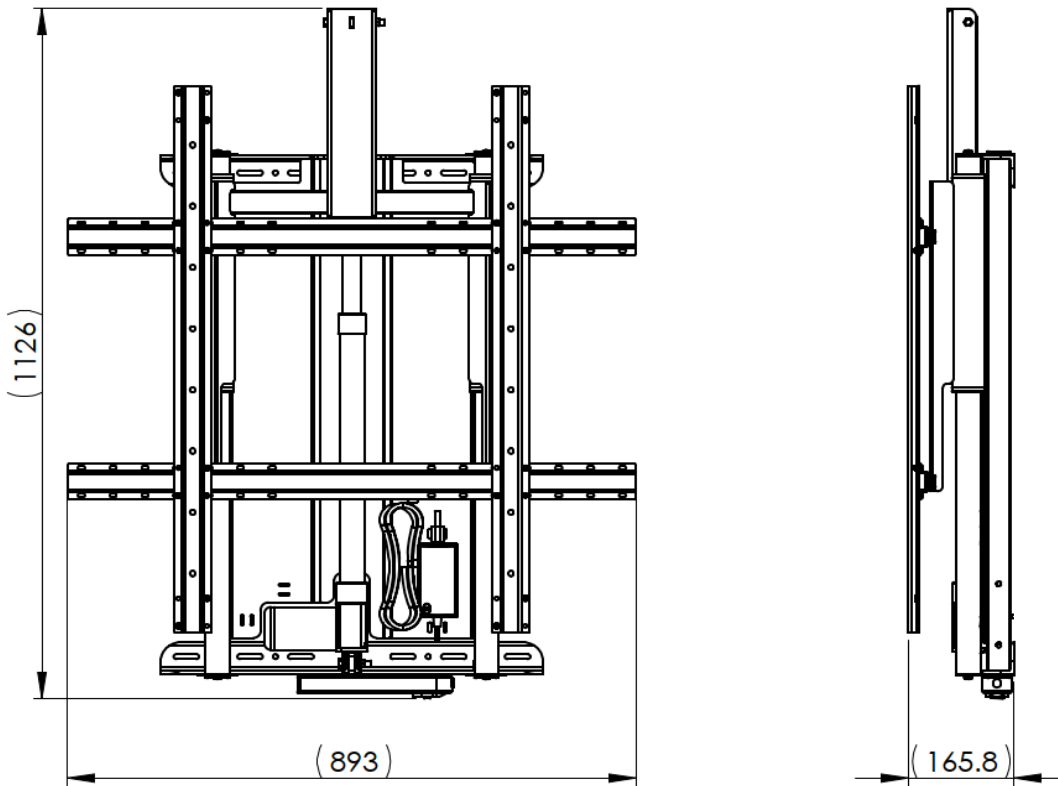


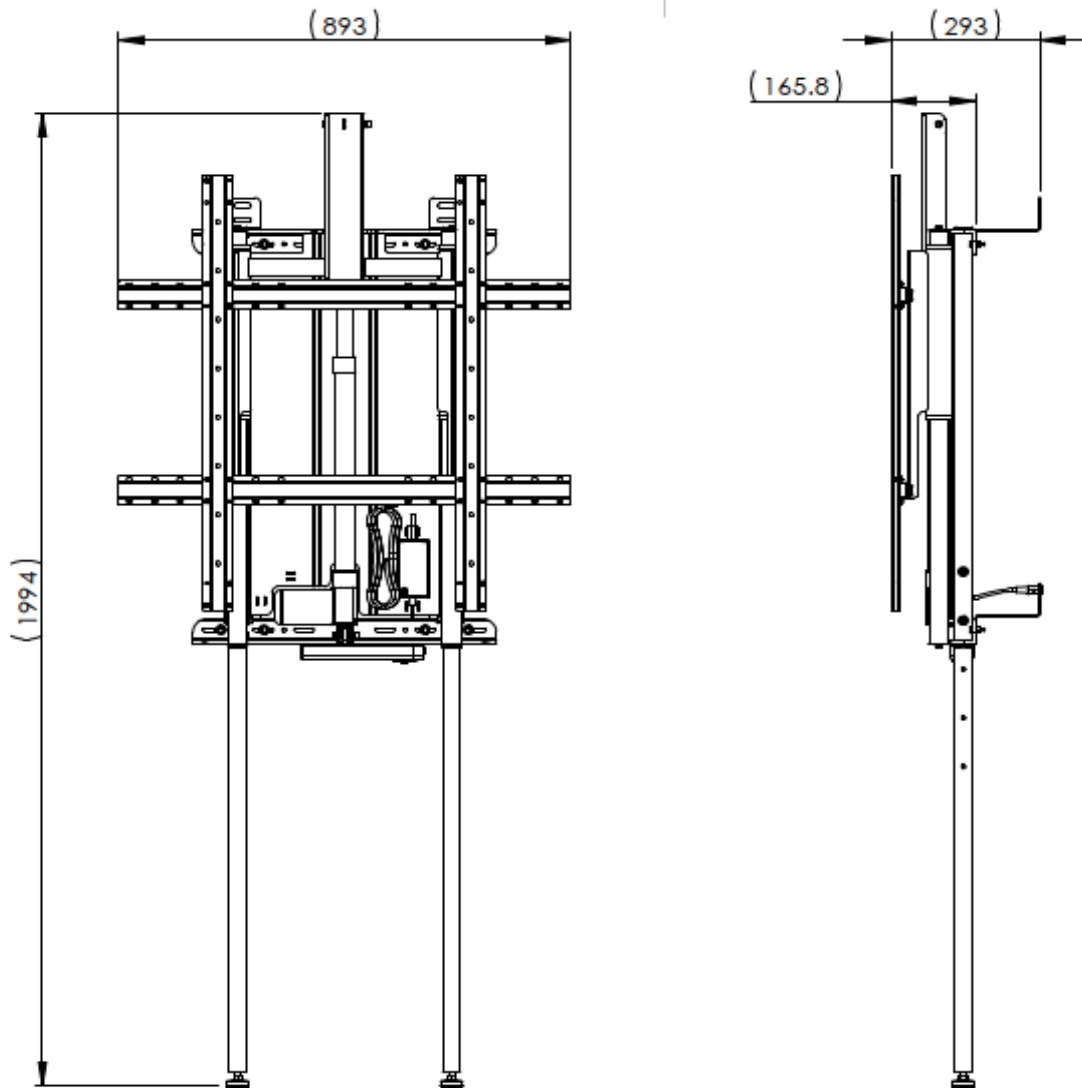
Height Adjustable Wall Mount

Model: HAWM - Direct mount for concrete and masonry walls



Height Adjustable Wall Mount

Model: HAWM1 - Stud mounting with floor support



Height Adjustable Wall Mount

Model: HAWM, HAWM1

Warranty:

Lifetime warranty on frame and powerbar

5 year warranty on electric lift

Physical Specifications:

Direct mount for concrete and masonry walls:

Height = 1126mm (44-3/8") - mount adjusted to highest position

Width = 893mm (35-1/8") - includes panel mount

Depth = 165.8mm (6-1/2") - include panel mount

Stud mount with floor support:

Height = 1994mm (78-1/2") - mount adjusted to highest position

Width = 893mm (35-1/8") - includes panel mount

Depth = 293mm (11-1/2") - include panel mount

Flat Panel Compatibility:

Commonly supported flat panels include: SMART, Promethean, Clever Touch, Clear Touch and others.

Supported Screen Size: Up to 86"

Supported VESA: 300 x 200 (min)

800 x 700 (max)

Max Weight: 114kg (250lbs)

Power Strip Specifications:

Outlets: 6 Right-angle NEMA 5-15R

Size: 1-1/2" H x 9-5/8" W x 1-3/4" D (4.0cm H x 24.4cm W x 4.5cm D)

AC Rating: 125V 15A 60Hz

Cable: 14-gauge thickness, 2.5m (8 ft.) length

Conformance: cULus

Switch: On/Off with built-in surge protection

Height Adjustable Wall Mount

Model: HAWM - Direct mount for concrete and masonry walls

Carton Size & Weights:

	Part No.	Carton Size (outer dimensions)	Weight	Volume (ft ³)	Dim. Wt. (lbs)
HAWM	HAMW-0	36-1/2" H x 25" W x 4-3/4" D (93cm H x 64cm W x 12cm D)	31.5 lbs (14.3 kg)	2.51	22
	HAMW-1	38-1/4" H x 23-3/4" W x 6-1/4" D (97cm H x 61cm W x 16cm D)	43.5 lbs (19.8 kg)	3.29	29

Model: HAWM1 - Stud mounting with floor support

Carton Size & Weights:

	Part No.	Carton Size (outer dimensions)	Weight	Volume (ft ³)	Dim. Wt. (lbs)
HAWM1	HAMW-0	36-1/2" H x 25" W x 4-3/4" D (93cm H x 64cm W x 12cm D)	31.5 lbs (14.3 kg)	2.51	22
	HAMW-1	38-1/4" H x 23-3/4" W x 6-1/4" D (97cm H x 61cm W x 16cm D)	43.5 lbs (19.8 kg)	3.29	29
	HAMW-AC1	45-1/2" H x 5" W x 5-1/2" D (116cm H x 13cm W x 14cm D)	12.5 lbs (5.7 kg)	0.72	6

Copernicus Educational Products

USA | P.O. Box 248 | Buffalo, NY | 14225

CANADA: R.R. #3, 8194 County Road 109 | Arthur, ON | N0G 1A0

P 1 800 267 8494 | E info@copernicused.com

Copernicus Educational Products is not responsible for printing errors. Copernicus reserves the right to change or modify pricing and products specifications with or without prior notification. Illustrations and descriptions may not be exactly as shown. No part may be reproduced by any means without prior authorization of Copernicus Educational Products Inc. All rights reserved. 2015 ©