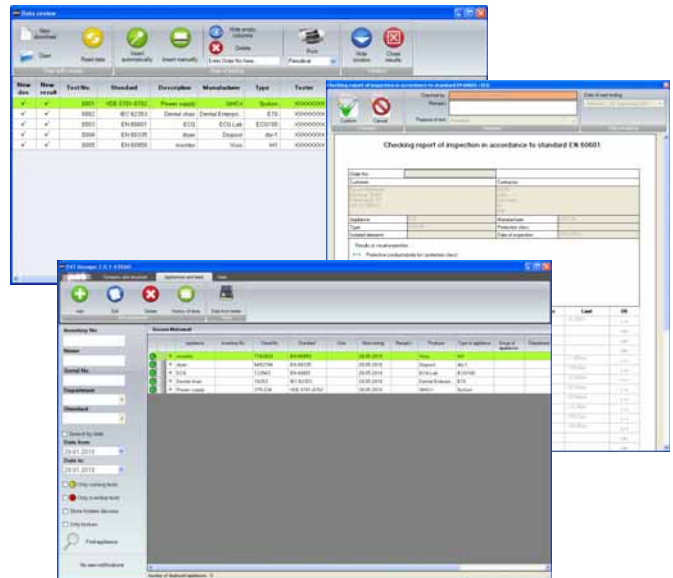


patManager

Database Software for SECUTEST / SECULIFE ST and (P)SI Module

3-349-585-03
1/2.10

- Easy and clear archives/evidence of tested devices within the company/departments
- Creation of testing history for every appliance
- Print-outs (printer or pdf) of test reports, inspection cards, stickers
- Automatic scheduling and checking the validity of tests
- E-mail notifications for overdue or incoming tests
- Modern and user-friendly interface
- Automatic data input from Secutest (P)SI
- Generating test reports in PDF



Applications

The software **patManager** serves to process and manage inspection and test data and is especially distinguished by its user-friendly interface.

It also offers the following useful functions:

- Generating test reports in PDF
- Automatic scheduling and controlling the validity of tests
- E-mail notifications for overdue or incoming tests

Order Information

Designation	Type	ID number
Database Software for SECUTEST / SECULIFE ST with (P)SI Module	patManager	Z712A

For additional information on accessories, please refer to

- our „Measuring Instruments and Testers“ catalogue
- our website www.gossenmetrawatt.com

System Requirements

- SECUTEST with (P)SI Module
- Runs under Windows XP, Vista and Windows 7
- User interface in GB, PL, RU
- 1 free serial interface

patManager Database Software

Edited in Germany • Subject to change without notice • A pdf version is available on the Internet



GMC-I Messtechnik GmbH
Südwestpark 15
90449 Nürnberg • Germany

Phone +49 911 8602-111
Fax +49 911 8602-777
E-Mail info@gossenmetrawatt.com
www.gossenmetrawatt.com