



# COMPLETE MANUAL FOR THE ZOOMSHOT 30 FIXED CAMERA



**WITH QUICK-CONNECT USB, QUICK-CONNECT USB MINI, AND QUICK-CONNECT  
DVI/HDMI CAMERA SYSTEMS OR FOR AV BRIDGE MATRIX PRO**

## TABLE OF CONTENTS

Overview .....	5
The ZoomSHOT 30 QUSB System .....	5
The ZoomSHOT 30 QMini System .....	5
The ZoomSHOT 30 QDVI System .....	6
The ZoomSHOT 30 AVBMP .....	6
Unpacking .....	7
Anatomy of the Camera .....	11
Front View with Feature Call-outs .....	11
Rear Panel Connections with Feature Call-outs .....	11
Table: ZoomSHOT 30 DIP Switch Settings .....	12
Table: ZoomSHOT 30 VIDEO Selections .....	12
IR SHOT Commander Remote .....	13
Quick-Connect USB .....	14
Front Panel with Feature Call-outs .....	14
Rear Panel with Feature Call-outs .....	15
Table: Quick Connect USB Rear Panel Dip Switch Settings .....	15
Quick-Connect USB Mini .....	16
Front Panel with Feature Call-outs .....	16
USB Mini Top Panel Connections .....	16
Quick-Connect DVI/HDMI-SR Interface .....	17
Front Panel with Feature Call-outs .....	17
Back Panel with Feature Call-outs .....	17
Basic Application Diagrams – ZoomSHOT 30 QUSB System .....	18
Basic Connections: ZoomSHOT 30 with QUSB, No Network or PC Integration .....	18
Basic Connections: ZoomSHOT 30 with QUSB, USB 2.0 Streaming .....	19
Basic Connections: ZoomSHOT 30 with QUSB, IP Streaming .....	19
Basic Connections: ZoomSHOT 30 with QUSB, System with Audio and Video .....	20
Basic Application Diagram – ZoomSHOT 30 QMini System .....	21
Basic Application Diagram – ZoomSHOT 30 QDVI System .....	22
Basic Application Diagram – ZoomSHOT 30 AVBMP .....	23
ZoomSHOT 30 Camera - First Time Set-up .....	24
Step By Step ZoomSHOT 30 System Installation Instructions .....	24
Controlling the ZoomSHOT 30 Camera .....	26
Table: ZoomSHOT 30 OSD Menu Structure .....	26
Quick-Connect USB and Quick-Connect USB Mini Details and Compatibility .....	29
Compatibility - Web Browsers .....	29
Compatibility with Soft Conferencing Clients .....	29
USB 2.0 UVC Driver Compatibility .....	29
Table: Supported UVC Resolutions .....	29
Quick-Connect USB Internal Web Pages and Control .....	30

Quick-Connect USB Web Pages Tour.....	30
QUSB Screen Shot: Login.....	30
QUSB Screen Shot: Camera Control Page - No Camera Detected .....	31
QUSB Screen Shot: User Menu - Camera Control Page .....	32
QUSB Screen Shot: Admin Log-in .....	33
QUSB Screen Shot: Admin Menu - Camera Settings Page .....	34
QUSB Screen Shot: Admin Menu - Streaming Page.....	36
QUSB Screen Shot: Admin Menu - Room Labels.....	37
QUSB Screen Shot: Admin Menu – Networking – DHCP Configuration .....	37
QUSB Screen Shot: Admin Menu – Networking – Static IP Configuration .....	38
QUSB Screen Shot: Admin Menu - Security.....	38
QUSB Screen Shot: Admin Menu - Diagnostics .....	39
QUSB Screen Shot: Admin Menu - System Menu.....	39
QUSB Screen Shot: Admin Menu - Update Confirmation.....	40
QUSB Screen Shot: Admin Menu - Update in Progress .....	41
QUSB Screen Shot: Admin Menu - Help .....	41
Quick-Connect USB Mini Internal Web Pages and Control .....	42
Quick-Connect USB Mini Web Pages Tour .....	42
QMini Screen Shot: Login .....	42
QMini Screen Shot: Camera Control Page - No Camera Detected .....	42
QMini Screen Shot: User Menu - Camera Control Page .....	43
QMini Screen Shot: Admin Log-in.....	44
QMini Screen Shot: Admin Menu - Camera Settings Page .....	45
QMini Screen Shot: Admin Menu - Streaming Page.....	47
QMini Screen Shot: Admin Menu - Room Labels .....	48
QMini Screen Shot: Admin Menu - Networking.....	48
QMini Screen Shot: Admin Menu - Security.....	49
QMini Screen Shot: Admin Menu - Diagnostics .....	50
QMini Screen Shot: Admin Menu - System Menu.....	50
QMini Screen Shot: Admin Menu - Update Confirmation .....	51
QMini Screen Shot: Admin Menu - Update in Progress.....	52
QMini Screen Shot: Admin Menu - Help .....	53
Connecting the ZoomSHOT 30 to the PC and Program of Choice .....	54
Skype Example .....	54
VLC Media Player Example .....	54
General Specifications.....	55
Other General Information.....	57
Connector Pin-outs .....	58
Camera EZ-POWER VIDEO RJ-45 Connector Pin-out.....	58
Camera RS-232 RJ-45 Connector Pin-out .....	58
Quick-Connect USB and Quick-Connect DVI/HDMI: DE-15 Connector Pin-out (Analog Component YPbPr) ...	58

Serial Communication Specification for the ZoomSHOT 30 .....	59
ZoomSHOT 30 Command List (1/2).....	59
ZoomSHOT 30 Command List (2/2).....	60
ZoomSHOT 30 Inquiry List (1/1) .....	61
QUSB Telnet Command API .....	62
Telnet Command List.....	62
Compliance and CE Declaration of Conformity for ZoomSHOT 30 .....	68
Compliance and CE Declaration of Conformity, Quick-Connect USB Interface .....	69
Compliance and CE Declaration of Conformity for USB Mini.....	70
Compliance and CE Declaration of Conformity - Quick-Connect DVI/HDMI-SR Interface .....	71
Warranty Information .....	72

**ZoomSHOT 30 Quick-Connect USB Systems:**

Model Number 999-6930-100 (North America)  
 Model Number 999-6930-101 (Europe/UK)

**ZoomSHOT 30 Quick-Connect USB Mini Systems:**

Model Number 999-6930-400 (North America)

**ZoomSHOT 30 Quick-Connect DVI/HDMI Systems:**

Model Number 999-6930-200 (North America)  
 Model Number 999-6930-201 (Europe/UK)

**ZoomSHOT 30 AVBMP:**

Model Number 999-6930-000 (Worldwide)



**Image:** ZoomSHOT 30 Camera

**OVERVIEW**

The Vaddio ZoomSHOT 30 camera is a low cost, high value, manual pan/tilt camera with a 30x optical power zoom lens and 63° wide horizontal field of view. The camera produces amazing results for small, medium and large room applications. Anywhere that a Point-of-View or stationary camera can be used alone or in conjunction with a Vaddio PTZ camera, to simplify camera coverage and preset positioning the ZoomSHOT 30 is the answer.

The ZoomSHOT 30 was designed from the ground up and is equipped with the Vaddio EZCamera™ Cat-5 wiring interface standard for video, power and control. Using HSDS™ (differential) video outputs over Cat-5 cable, the ZoomSHOT 30 supplies a wide range of video resolutions that are selectable from the rear panel; from 720p/50 up to and including 1080p/60. The HSDS processing allows delivery of the ZoomSHOT 30 video signals up to 150' (45.72m).

Choose between three (3) IR frequencies for the Vaddio IR SHOT Commander remote to allow multiple cameras to be locally IR controlled with a single remote control. The ZoomSHOT 30 also has an OSD (on screen display) for basic image control that's accessible with the IR remote.

**The ZoomSHOT 30 QUSB System**

This system features the exciting and robust Quick-Connect USB (or QUSB) Interface, which was designed to have multi-format digital and analog video outputs, to be compatible with all Vaddio cameras with HSDS technology and include USB 2.0 or IP streaming outputs with a built-in web interface for IP control. The outputs include; HDMI, YPbPr, USB Video (UVC standards-MJPEG) and H.264 IP Video (RTSP & HLS). The embedded web interface provides for browser-based access to camera controls, camera presets and basic CCU functions (color and shading controls) as well as the video configuration web pages. The Quick-Connect USB uses UVC (Universal Video Class) drivers, so whatever resolution the UC application needs, the QUSB will auto negotiate.

ZoomSHOT 30 paired with the Quick-Connect USB Interface in this package represents a dynamic system for professional installations at true value.

**The ZoomSHOT 30 QMini System**

The Quick-Connect USB Mini (or QMini) is designed to address the demands of customers and integrators who required simple and effective USB 2.0, 720p/30 streaming and capture capabilities without the need for local analog or digital video outputs. The USB Mini uses UVC (Universal Video Class) drivers, so whatever resolution the UC application needs, the USB Mini will auto negotiate.

The USB Mini also offers easy mounting either on-wall or under-table with an integrated mounting tab similar to the style used on Vaddio EZCamera™ Interface Module or EZIM™. This provides the end user or integrator many possibilities for mounting in easily accessible locations, as requirements dictate.



**Image:** Quick-Connect USB (QUSB) Interface



**Image:** Quick-Connect USB Mini (QMini) Interface



**Image:** Quick-Connect DVI/HDMI (QDVI) Interface

ZoomSHOT 30 paired with the Quick-Connect USB Mini Interface in this package represents a superior value for professional installations at a very low price.

### The ZoomSHOT 30 QDVI System

This system features the Quick-Connect DVI/HDMI-SR Interface, which uses the Vaddio EZCamera™ Cat-5 Cable System to transport HSDS™ (differential video), power and control to and from the camera over Cat-5 cables. The EZ-POWER VIDEO jack, color coded orange, carries power to the camera and returns differential HD video over the same Cat-5/5e/6 cable. The video output of the Quick-Connect DVI/HDMI-SR is clean and simultaneous HDMI or DVI-D and YPbPr analog component. The RS-232 jack, color coded blue, provides bidirectional control and IR Forwarding to and from the camera.

ZoomSHOT 30 paired with the Quick-Connect DVI/HDMI in this package provides flexible and professional outputs for your installations at a great value.

### The ZoomSHOT 30 AVBMP

Optimized for connection to the AV Bridge MATRIX PRO, the ZoomSHOT 30 AVBMP lets you connect the ZoomSHOT 30 camera directly to the EZ-POWER VIDEO and RS-232 jacks of the AV Bridge MATRIX PRO, using Cat-5/5e/6 cables. HD video and serial control are provided to the MATRIX PRO switcher for an easy-to-install dynamic room solution providing simultaneous HDMI, H.264 IP streaming, and USB 2.0 1080p/30 streaming outputs with integrated audio.

This package must be used in conjunction with a Vaddio AV Bridge MATRIX PRO. Refer to the AV Bridge MATRIX PRO documentation for more information on this configuration and let the ZoomSHOT 30 AVBMP be part of your total room solution!

### Intended Use

Before operating the device, please read the entire manual thoroughly. The system was designed, built, and tested for use indoors with the power supply provided. The use of a power supply other than the one provided, or outdoor operation hasn't been tested and may damage the device or create a potentially unsafe operating condition.

### Important Safeguards:

Read and understand all instructions before using. Do not operate any device if it has been dropped or damaged. In this case, a Vaddio technician must examine the product before operating. To reduce the risk of electric shock, do not immerse in water or other liquids and avoid extremely humid conditions.



**Use only the power supply provided with the system. Use of any unauthorized or DC extended power supplies will void any and all warranties.**



Please do not use "pass-thru" type RJ-45 connectors. These pass-thru type connectors do not work well for professional installations and can be the cause of intermittent connections which can result in the RS-232 control line failing and locking up, and/or compromising the HSDS (high speed differential) signals. For best results please use standard RJ-45 connectors and test all cables for proper pin-outs prior to use and connection to Vaddio product.

### Save These Instructions:

The information contained in this manual will help you install and operate your product. If these instructions are misplaced, these documents can be downloaded from [www.vaddio.com](http://www.vaddio.com) free of charge.

## UNPACKING

Carefully remove the product and all the included parts from the packaging. Identify the following parts for each camera:

### ZoomSHOT 30 QUSB Camera System (North America)

**Part Number: 999-6930-100**

- One (1) ZoomSHOT 30 camera (998-6930-000)
- One (1) Vaddio IR Shot Commander Remote
- Two (2) AAA Batteries
- One (1) Thin Profile Wall Mount
- Two (2) 1-5/8" Nylon self-drilling drywall anchors
- Two (2) #8 x 1.25" sheet metal screws
- Two (2) black oxide 1/4-20 x 1/2" pan head screws
- One (1) Quick-Connect USB Interface (998-1105-038)
- One (1) 24 VDC 2.08 A power supply
- One (1) US Power Cable
- One (1) 6ft USB 2.0 cable, Type A to Type B
- Four (4) Rubber feet for QUSB if not rack mounted
- One (1) Quick-Start Guide for ZoomSHOT 30 QUSB



### ZoomSHOT 30 QUSB Camera System (Europe/UK)

**Part Number: 999-6930-101**

- One (1) ZoomSHOT 30 camera (998-6930-000)
- One (1) Vaddio IR Shot Commander Remote
- Two (2) AAA Batteries
- One (1) Thin Profile Wall Mount
- Two (2) 1-5/8" Nylon self-drilling drywall anchors
- Two (2) #8 x 1.25" sheet metal screws
- Two (2) black oxide 1/4-20 x 1/2" pan head screws
- One (1) Quick-Connect USB Interface (998-1105-038)
- One (1) 24 VDC 2.08 A power supply
- One (1) Euro Power Cable
- One (1) UK Power Cable
- One (1) 6ft USB 2.0 cable, Type A to Type B
- Four (4) Rubber feet for QUSB if not rack mounted
- One (1) Quick-Start Guide for ZoomSHOT 30 QUSB



## ZoomSHOT 30 QMini Camera System (North America)

Part Number: 999-6930-400

- One (1) ZoomSHOT 30 camera (998-6930-000)
- One (1) Vaddio IR Shot Commander Remote 998-2101-000
- Two (2) AAA Batteries
- One (1) Thin Profile Wall Mount
- Two (2) 1-5/8" Nylon self-drilling drywall anchors
- Two (2) #8 x 1.25" sheet metal screws
- Two (2) black oxide ¼-20 x ½" pan head screws
- One (1) Quick-Connect USB Mini Interface (998-1105-039)
- One (1) 24 VDC 2.08 A power supply
- One (1) US Power Cable
- One (1) 6ft USB 2.0 cable, Type A to Type B
- One (1) Quick-Start Guide for ZoomSHOT 30 QMini





### ZoomSHOT 30 QDVI Camera System (North America)

**Part Number: 999-6930-200**

- One (1) ZoomSHOT 30 camera (998-6930-000)
- One (1) Vaddio IR Shot Commander Remote
- Two (2) AAA Batteries
- One (1) Thin Profile Wall Mount
- Two (2) 1-5/8" Nylon self-drilling drywall anchors
- Two (2) #8 x 1.25" sheet metal screws
- Two (2) black oxide 1/4-20 x 1/2" pan head screws
- One (1) Quick-Connect DVI/HDMI Interface (998-1105-018)
- One (1) 24 VDC 2.08 A power supply
- One (1) US Power Cable
- One (1) 3-position phoenix-style connector
- Four (4) Rubber feet for QDVI if not rack mounted
- One (1) Quick-Start Guide for ZoomSHOT 30 QDVI



### ZoomSHOT 30 QDVI Camera System (Europe/UK)

**Part Number: 999-6930-201**

- One (1) ZoomSHOT 30 camera (998-6930-000)
- One (1) Vaddio IR Shot Commander Remote
- Two (2) AAA Batteries
- One (1) Thin Profile Wall Mount
- Two (2) 1-5/8" Nylon self-drilling drywall anchors
- Two (2) #8 x 1.25" sheet metal screws
- Two (2) black oxide 1/4-20 x 1/2" pan head screws
- One (1) Quick-Connect DVI/HDMI Interface (998-1105-018)
- One (1) 24 VDC 2.08 A power supply
- One (1) Euro Power Cable
- One (1) UK Power Cable
- One (1) 3-position phoenix-style connector
- Four (4) Rubber feet for QDVI if not rack mounted
- One (1) Quick-Start Guide for ZoomSHOT 30 QDVI



**ZoomSHOT 30 AVBMP (Worldwide)**

**Part Number: 999-6930-000**

- One (1) ZoomSHOT 30 camera (998-6930-000)
- One (1) Vaddio IR Shot Commander Remote
- Two (2) AAA Batteries
- One (1) Thin Profile Wall Mount
- Two (2) 1-5/8" Nylon self-drilling drywall anchors
- Two (2) #8 x 1.25" sheet metal screws
- Two (2) black oxide ¼-20 x ½" pan head screws
- One (1) Quick-Start Guide for ZoomSHOT 30 AVBMP



## ANATOMY OF THE CAMERA

### Front View with Feature Call-outs



1. **Lens:** 63° wide with 30X optical zoom.
2. **IR Sensor and Power/Tally LED:** The IR sensor for the IR SHOT Commander remote is located here. Below it is a light pipe where a blue LED power and a red LED tally reside. Both light up to produce purple during boot-up. The ZoomSHOT 30's IR sensor will not react to the remote if the IR is turned off with DIP switch 3 on the rear panel.
3. **The Yoke:** For manual pan and tilt. Tilt range is  $\pm 30^\circ$  and Pan is limited to the service loop of the cabling.
4. **Really Cool Logo Badge (RCLB):** The RCLB is affixed to the base in a recessed oval area.
5. **The Aluminum Base and Steel Cylindrical Body:** Please don't drop it on your foot, it's fairly substantial.

### Rear Panel Connections with Feature Call-outs



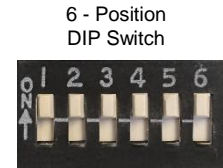
- 1) **RS-232 Port:** The RS-232 accepts modified VISCA protocol for camera control.
- 2) **EZ Power/Video Port:** This RJ-45 connector is only used with the Quick-Connect USB, Quick-Connect USB Mini, Quick-Connect DVI/HDMI Interfaces or the AV Bridge MATRIX PRO to supply power and return HSDS (differential) video from the

camera over Cat-5 cable up to distance of 150' (45.72m).

**3) ZoomSHOT 30 DIP Switch Settings:** Settings for IR remote ID, IR receiver on/off, image flip, and digital zoom can be configured on these switches.

**Table: ZoomSHOT 30 DIP Switch Settings**

DIP Switch	Function
1	Up = IR1, Down = IR2
2	Up = IR 1 or 2, Down = IR3
3	Up=IR ON, Down = IR OFF
4	Up = Normal Image, Down = Image Flip
5	Not Used
6	Update Position - Leave UP unless updating firmware
All Down	Reset to defaults – with power cycle



**4) HD Video Select:** A rotary switch allows the user to choose the HD output video resolution and format. After setting or changing the resolution, reboot the camera to ensure proper operation. If an unassigned rotary selection position is chosen (9, A, B, C or D), the camera will not output video. Simply set the rotary switch to an assigned position to output video. See rotary switch settings below.

**Table: ZoomSHOT 30 VIDEO Selections**

Rotary	Resolutions	Rotary	Resolutions
0	720p/59.94 (USB)	8	1080p/50
1	1080i/59.94	9	--
2	1080p/59.94	A	--
3	720p/60	B	--
4	1080i/60	C	--
5	1080p/60	D	--
6	720p/50	E	1080p/30
7	1080i/50	F	1080p/25

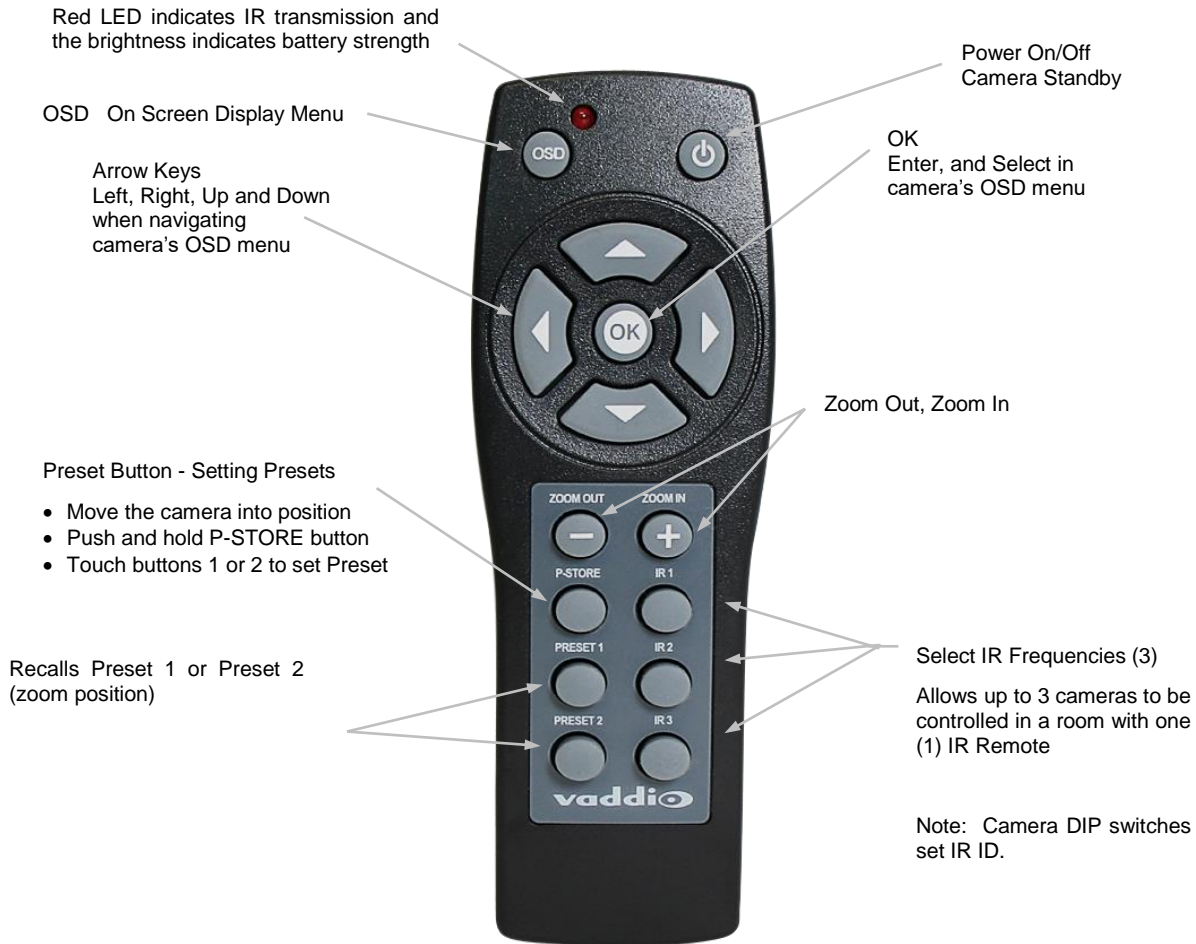


Point the notch in the switch stem to assign the rotary position.

*For Quick-Connect USB Mini 2.0 streaming, use position "0" (720p/59.94) for best results.*

## IR SHOT COMMANDER REMOTE

The ZoomSHOT 30 camera is shipped with the Vaddio IR SHOT Commander IR remote, which is also compatible with various other Vaddio cameras.



IR SHOT Commander - Quick Specs	
<b>IR Range</b>	20' to 30' (6m to 9m)
<b>Batteries</b>	2 x AAA
<b>Keys (buttons)</b>	15 Silicone Rubber Keys
<b>Dimensions L x W x H</b>	4.53" (115mm) x 1.57" (40mm) x 1.1" (28mm)
<b>LED Indicator</b>	Red LED illuminates when transmitting IR, brightness indicates battery strength
<b>Compatible Cameras</b>	Ships with ZoomSHOT 30 and WideSHOT SE. Compatible with all Vaddio HD PTZ cameras (limited function set) and most Sony BRC & EVI cameras.

## QUICK-CONNECT USB

### Front Panel with Feature Call-outs



#### 1) LCD Blue Backlit Display:

20 x 2 Character, ODV (Omnidirectional view), ABN (advanced black nematic) display with a high contrast and wide viewing angle combined with high visibility. The MAC address (labeled as “HW” for hardware) is on the top line, and the IP address (static of DHCP) is listed on the bottom line. This display with IP and MAC addresses allows for easy access to the embedded web interface and Vaddio camera setting for the PC or BYOD (bring your own device – laptop or tablet) users of UC conference systems. Upon power up or power reset this display will indicate when the unit is in initialization mode.

#### 2) Power/ System Reset Switch:

The System Reset switch on the front panel is a blue back-lit tactile switch that will illuminate when power is present at the rear power connector. Pressing in and holding this switch will restart/reinitialize the Quick-Connect USB interface.

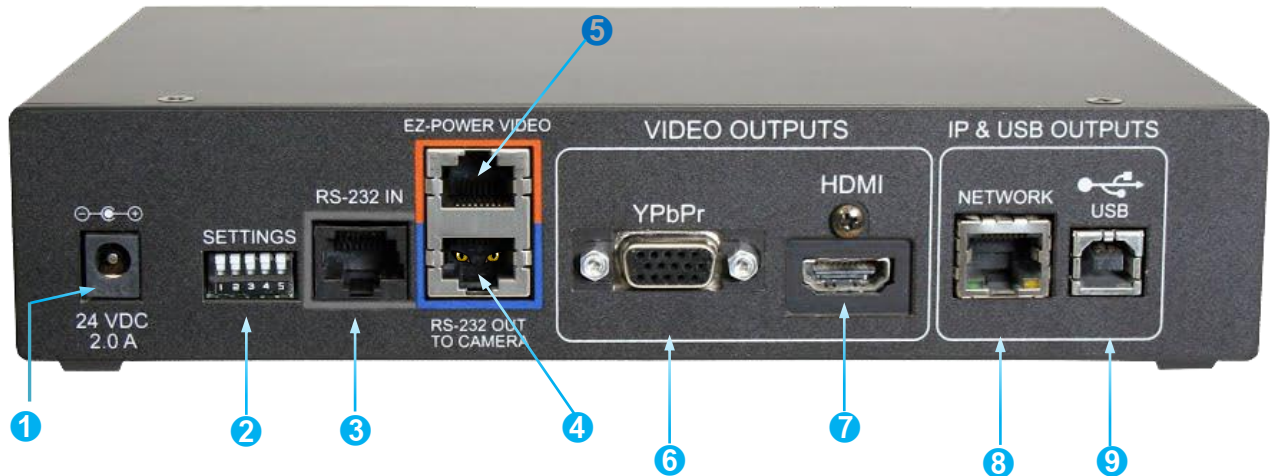
#### 3) Network LED:

The blue panel mount LED indicator will indicate the presence of an Ethernet connection. This LED will blink to indicate network activity. If no network connection is made, the LED will remain off.

#### 4) USB LED:

The blue panel mount LED indicates the presence of a USB connection to a PC (or Mac). Blinking will indicate USB activity. If no USB connection is present the LED will remain off.

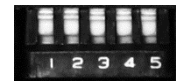
## Rear Panel with Feature Call-outs



- 1) **Power Input:** 5.5mm x 2.5mm coaxial power jack for use with provided 24 VDC, 2.08 Amp switching power supply. The Quick-Connect USB supplies power to the attached camera.
- 2) **5-Position DIP Switch:** A 5-position dip switch allows the user to choose the HD video color space (YCbCr for HDMI and sRGB color space for DVI-D) on the HDMI output, configure for updates, and restore factory defaults when cycling power.

**Table: Quick Connect USB Rear Panel Dip Switch Settings**

DIP Switch	Function	Default	Activation
1	Future Use	Up	n/a
2	Future Use	Up	n/a
3	Color Space HDMI Connector	Up = HDMI (YCbCr)	Down = DVI (sRGB)
4	Program / Update	UP = No Program	DOWN = Ready To Program
5	Future Use	Up	n/a
All Down	Reset to Defaults	All UP	ALL DOWN (with power cycle)



5 - Position  
DIP Switch

- 3) **RS-232 IN (Color-Coded Grey):** Serial RS-232 input on an RJ-45 connector. This control port allows a Vaddio joystick controller or 3<sup>rd</sup> party controller (Crestron, Extron, AMX) to control the camera functions if the embedded web interface is not used for real time control.
- 4) **RS-232 OUT TO CAMERA (Color-Coded Blue):** Serial RS-232 output on RJ-45 connects via Cat-5 to the camera RS-232 input
- 5) **EZ-POWER VIDEO port (Color-Coded Orange):** The QUSB will automatically show up as a native USB 2.0 device on the connected computer. If not prompted to allow the device as your primary UVC video source, it may be required to configure it as such in the operating system of the streaming/capture computer.
- 6) **YPbPr Output:** Analog component video output on a DE-15 (HD15) connector (resolution is set on the back of the camera). The YPbPr output resolution will be the same as the HDMI output resolution. SD video resolution (Y/C and CVBS formats) are not supported by the Quick-Connect USB interface; however, some progressive frame analog component SD video is supported.
- 7) **HDMI Output:** The digital video output on the HDMI connector can either be YCbCr color space (normal HDMI mode) or can be changed to DVI-D color space (sRGB) for older monitors and devices. The HDMI and YPbPr outputs work simultaneously and are the same resolution (set at the camera).
- 8) **Ethernet 10/100 Network RJ-45 Jack:** The Ethernet jack will have yellow and green lights to indicate connectivity and activity of the network on that jack. The Ethernet jack will stream video up to 1080p/30 (H.264) and can be set from the internal web page. The resolutions are available in a three (3) stage quality format (High Quality, Good Quality, and Standard Quality targets) and includes a range of CIF to 1080p/30.
- 9) **USB 2.0 Connector:** The USB 2.0 is on a Type-B female jack and connects to a PC running a soft-client video conference system or video capture software that uses UVC (USB Video Class) standard drivers. No other USB 2.0 drivers are required to plug the QUSB into a computer and have it work. The UVC drivers will auto-negotiate the top resolution that the computer, program, and QUSB can accomplish together and auto-implement that resolution.

## QUICK-CONNECT USB MINI

### Front Panel with Feature Call-outs

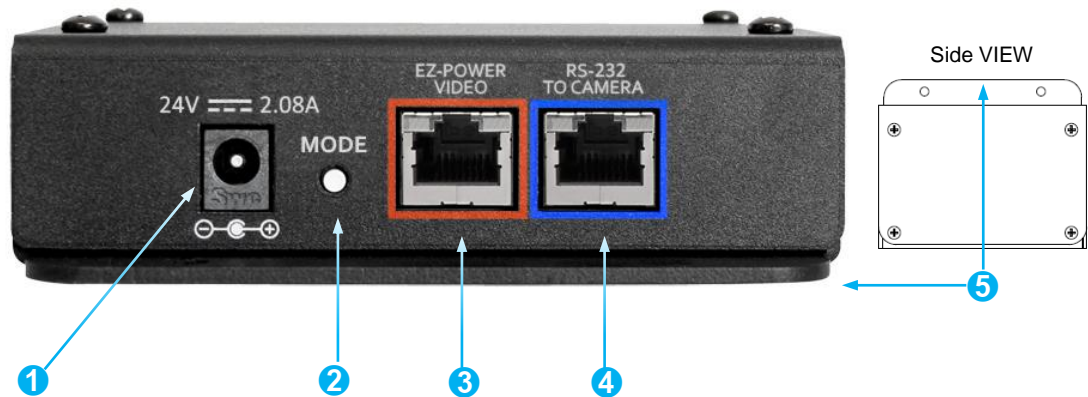


1) **USB Port:** USB Type-B port for connectivity to streaming or capture computer.

2) **Power LED:** Indicates presence of 24 VDC power for the Quick-Connect.

The USB Mini will automatically show up as a native USB 2.0 device on the connected computer. If not prompted to allow the device as your primary UVC video source, it may be required to configure it as such in the operating system of the streaming/capture computer.

### USB Mini Top Panel Connections



1) **Power Connector:** 5.5mm x 2.5mm coaxial power jack for use with provided 24 VDC, 2.08 Amp switching power supply.

2) **Mode Switch:** White-capped, recessed, momentary tactile push button for switching between USB Streaming and Web Control (Ethernet over USB) modes, as well as a Factory Reset mode.

#### Important configuration and operating note:

a. The USB Mini interface will boot up in UVC streaming video mode. A quick momentary touch will switch to web control mode and video will no longer pass. This allows the administrator to set up the USB Mini with the embedded web pages and when the administrator is finished, toggle back to UVC streaming mode for the end user. It is highly unlikely that the end user will ever need access to the configuration web pages during use of the USB Mini.

b. For resetting the USB Mini back to factory defaults, push and hold this switch in for approximately 5.0 seconds. The front panel blue LED will blink indicating the reset to factory defaults.

3) **EZ-POWER VIDEO RJ-45 (Color-Coded Orange):** Simultaneously sends power to the camera to and returns HSDS (differential) video from the camera which is used to generate USB 2.0 (UVC) video for the connected PC.

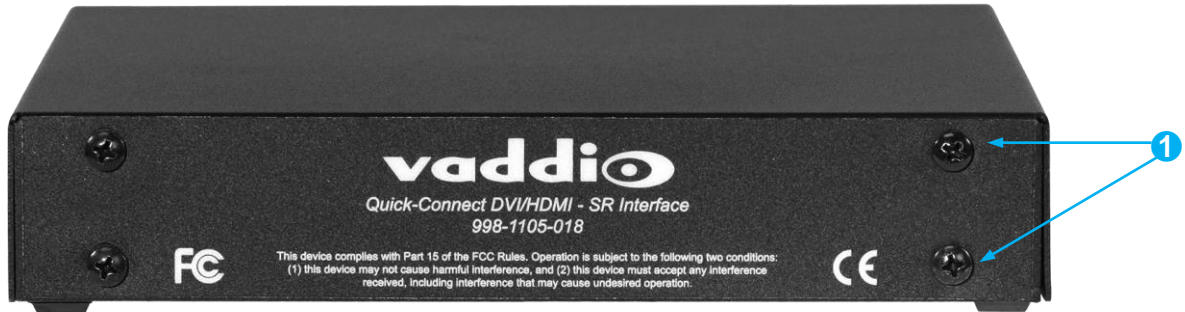
4) **RS-232 Jack (Color-Coded Blue):** RJ-45 control port for sending serial control to the camera. This must be connected to the camera's RS-232 port in order for the Quick-Connect USB Mini to auto-recognize and auto load the correct Vaddio camera control protocols.

5) **Mounting Flange:** The mounting flange is provided for surface mounting the USB Mini (under table or in other clever spots) and for easy access to the USB connection for BYOD laptop or computer.



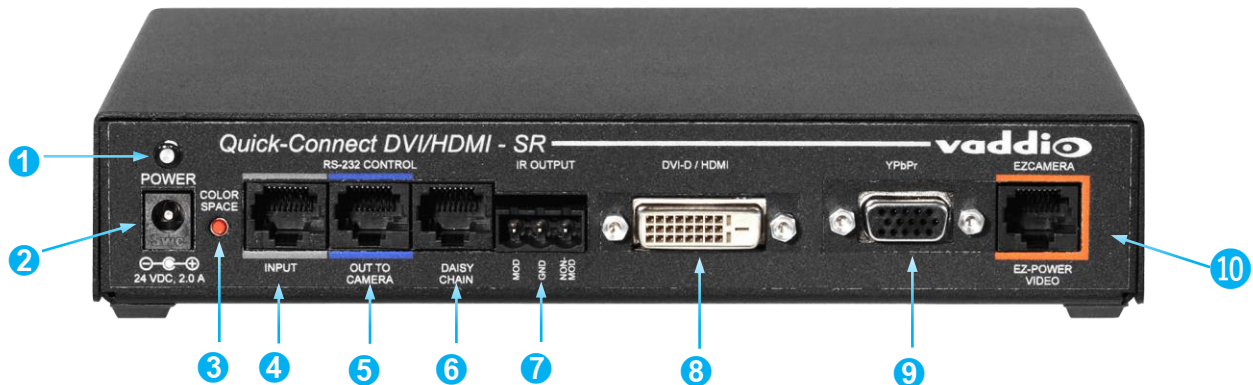
## QUICK-CONNECT DVI/HDMI-SR INTERFACE

### Front Panel with Feature Call-outs



1) **Mounting screws:** 4 qty screws for mounting the QDVI into the optional 1-RU Panel for 2 Interfaces (part number 998-6000-003) rack mount.

### Back Panel with Feature Call-outs



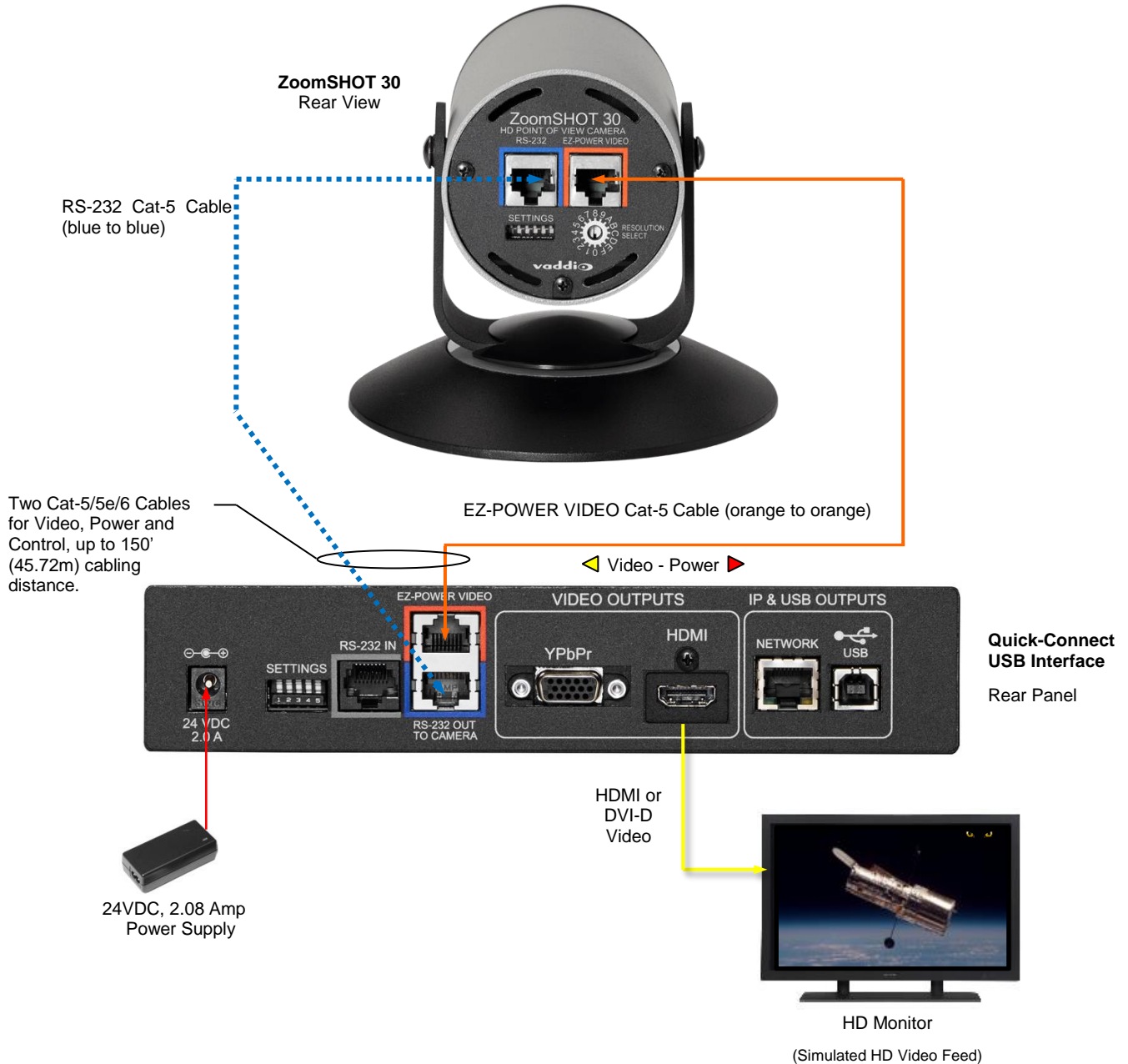
- 1) **Power Light:** Illuminates when power is connected.
- 2) **Power Connector:** 5.5mm x 2.5mm coaxial power jack for use with provided 24 VDC, 2.08 Amp switching power supply.
- 3) **Color Space:** Toggles between HDMI YCbCr and sRGB color space to accommodate either HDMI or DVI-D monitors
- 4) **RS-232 Control Input:** Camera control input from a Vaddio joystick controller or other controller.
- 5) **RS-232 Control Out to Camera:** Control signals to the camera.
- 6) **Daisy Chain:** Daisy Chain Control Emulation (DCCE) output to the next Quick-Connect DVI/HDMI-SR interface
- 7) **IR Output:** Forwards IR signals from the camera to third party equipment such as videoconferencing codecs. Use the MOD signal if the IR is from a remote or other IR emitter; use the NON-MOD signal for wired connections.
- 8) **DVI-D/HDMI:** HDMI 1.3 and DIV v 1.0 compliant. With a DVI to HDMI adapter, extends HDMI to an output device up to 100 ft. (30m) away.
- 9) **YPbPr:** Analog component video output from the camera. Resolutions up to 1080p/60.
- 10) **EZ-Power Video:** Power to the camera and video from the camera. Maximum cable distance to the ZoomSHOT 30 is 150 ft. (45m).

## BASIC APPLICATION DIAGRAMS – ZOOMSHOT 30 QUSB SYSTEM

The following diagrams show representative connections for the ZoomSHOT 30 QUSB, QMini and QDVI systems as well as the ZoomSHOT 30 AVBMP with an AV Bridge MATRIX PRO.

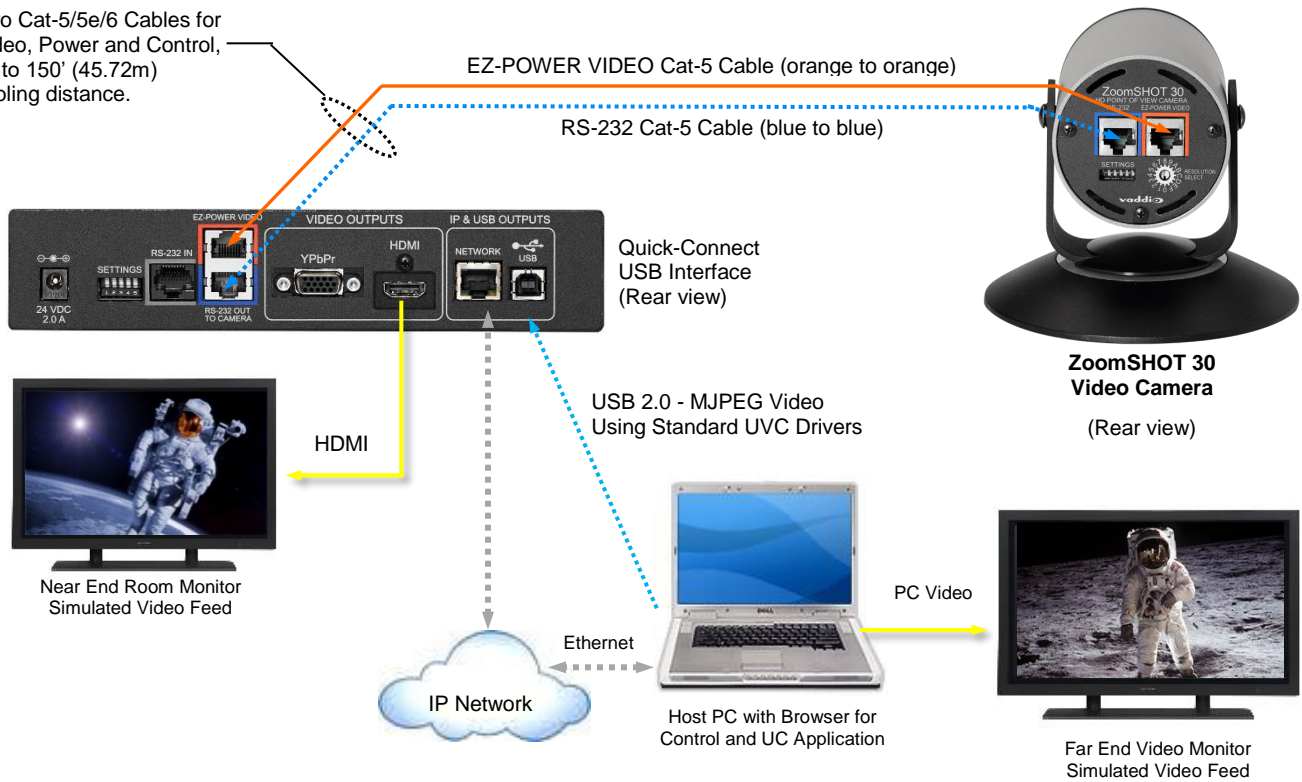
### Basic Connections: ZoomSHOT 30 with QUSB, No Network or PC Integration

ZoomSHOT 30 POV Manual Camera shown with the Quick-Connect USB Interface (video application)

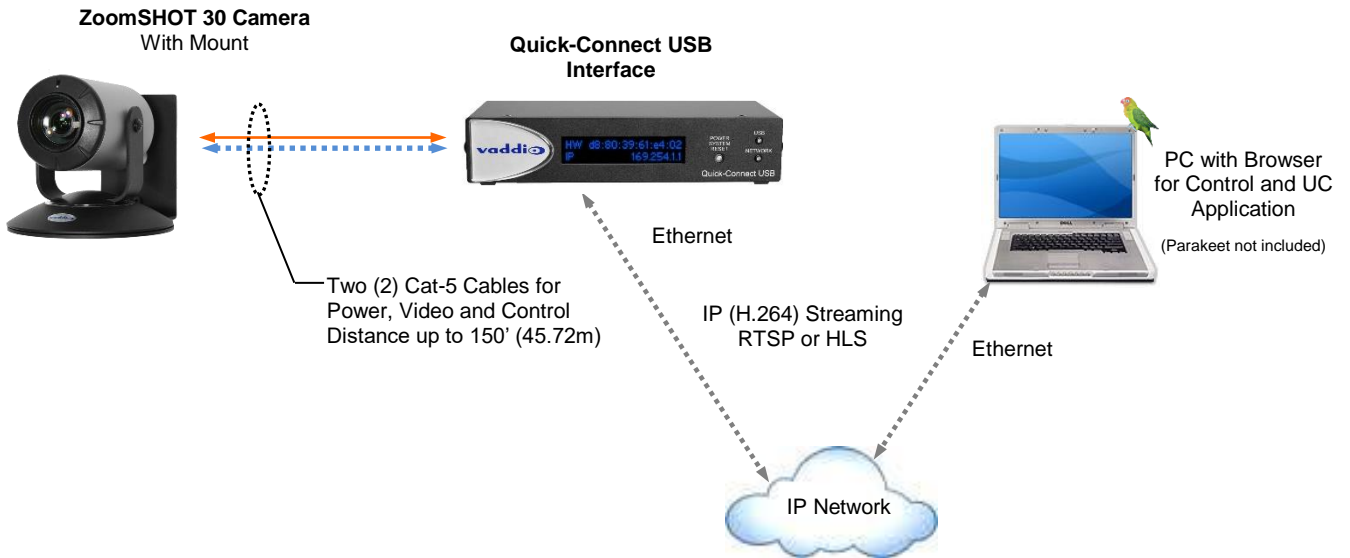


### Basic Connections: ZoomSHOT 30 with QUSB, USB 2.0 Streaming

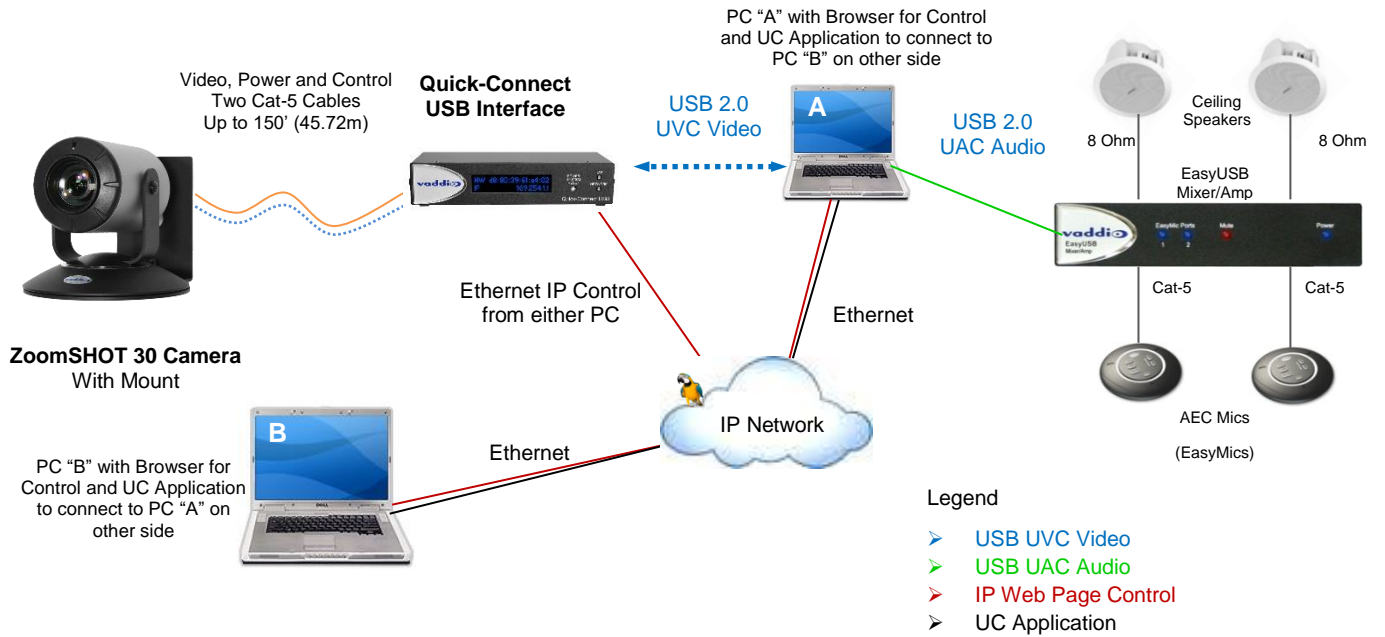
Two Cat-5/5e/6 Cables for Video, Power and Control, up to 150' (45.72m) cabling distance.



### Basic Connections: ZoomSHOT 30 with QUSB, IP Streaming

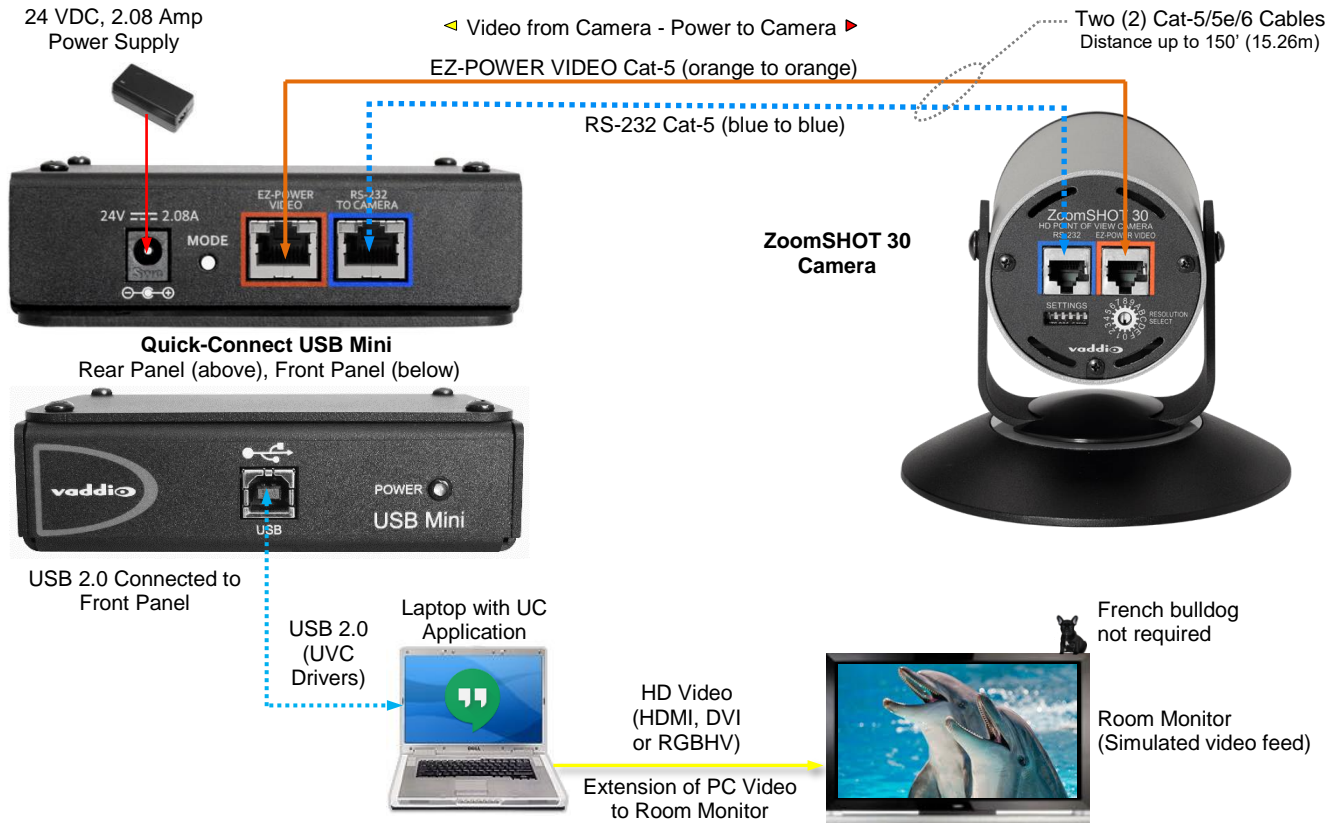


### Basic Connections: ZoomSHOT 30 with QUSB, System with Audio and Video



## BASIC APPLICATION DIAGRAM – ZOOMSHOT 30 QMINI SYSTEM

### Basic Connections: ZoomSHOT 30 with QMini, USB Output to Computer



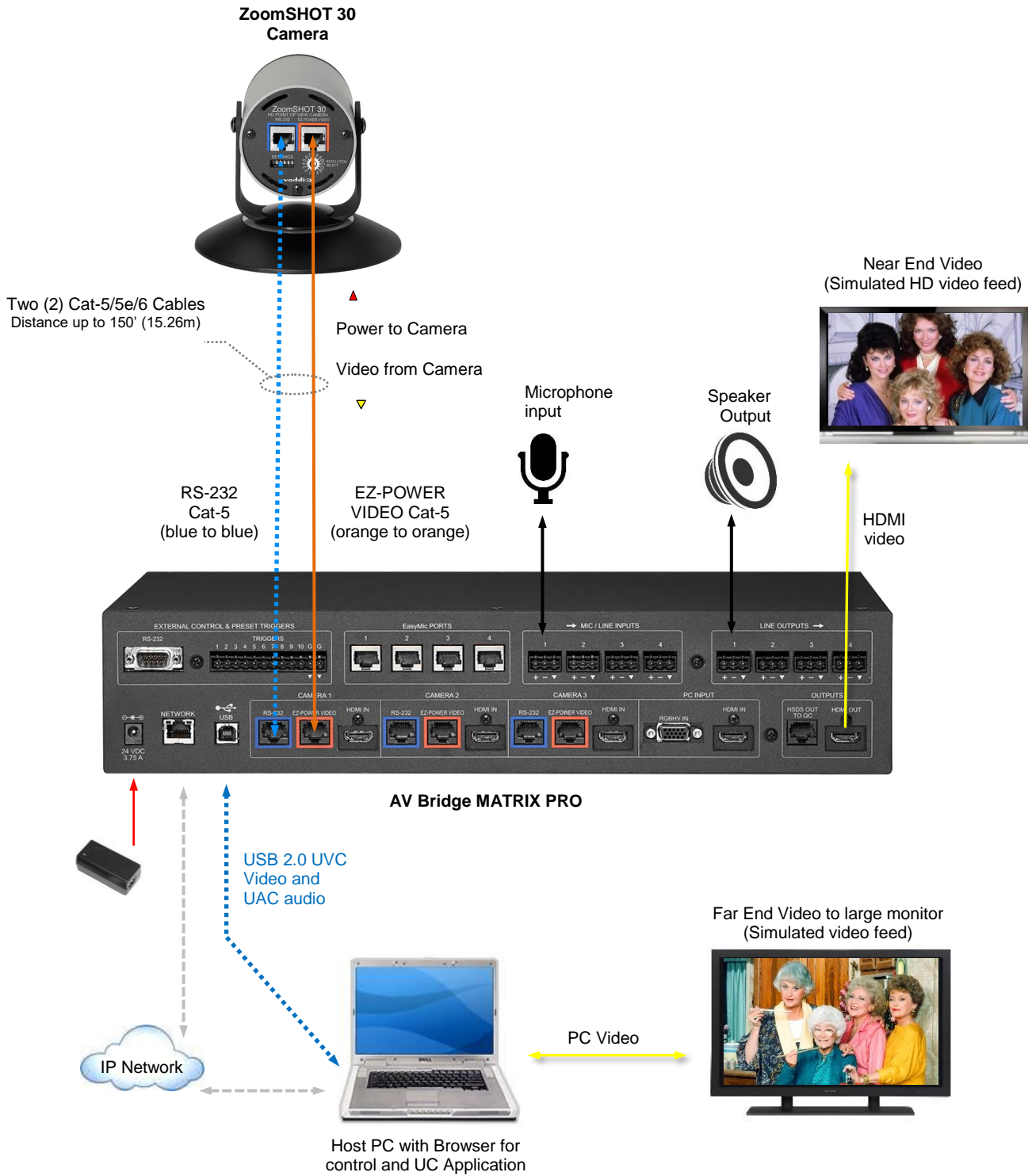
## BASIC APPLICATION DIAGRAM – ZOOMSHOT 30 QDVI SYSTEM

### Basic Connections: ZoomSHOT 30 with QDVI, with Vaddio Joystick



# BASIC APPLICATION DIAGRAM – ZOOMSHOT 30 AVBMP

## Basic Connections: ZoomSHOT 30 AVBMP connected to AV Bridge MATRIX PRO



## ZoomSHOT 30 CAMERA - FIRST TIME SET-UP

The ZoomSHOT 30 was designed to be very easy to use and operate. There is documentation at the back of this manual for pin-outs for the connectors on the ZoomSHOT 30 camera and the QUSB, QMini and QDVI Interfaces.

### Before Installing the Camera:

- Choose the camera mounting location while paying close attention to camera viewing angles, lighting conditions, possible line of site obstructions and checking for in-wall obstructions where the camera is to be mounted. Always pick a mounting location that will optimize the performance of the camera.
- Please locate the camera to enable easy positioning of the camera body with the ability to point down and away from the ceiling and a bunch of fluorescent lighting cells. *Cameras generally don't like to be swamped with fluorescent light and very few people sit on the ceiling anyway.*
- The Thin Profile Wall Mount for the ZoomSHOT 30 can be mounted directly to a 1-gang wall box or can be mounted using the two (2) provided spiral drywall anchors.
- For Power/Video and RS-232 signals, use standard Cat-5 cable (568B termination and real RJ-45 connectors) from the EZ-POWER VIDEO and RS-232 ports on the back of the ZoomSHOT 30 to the Quick-Connect Interface or AV Bridge MATRIX PRO. The EZ-POWER VIDEO jack on the camera is color-coded as a reminder that there is 24 VDC power on that Cat-5 cable.

### STEP BY STEP ZoomSHOT 30 SYSTEM INSTALLATION INSTRUCTIONS

**Step 1:** After determining the optimum location of the camera; route, mark and test the two Cat-5 cables from the camera to the Quick-Connect Interface or AV Bridge MATRIX PRO located at the table or rack. The two Cat-5 cables should feed-through the hole located on the rear flange of the Thin Profile Wall Mount. If the bracket is to be mounted on a 1-gang wall box, use the screws supplied with the wall box cover plate to attach the Thin Profile Wall Mount. If mounting to the drywall with wall anchors, use two quality wall anchors. The mount provides for easy leveling. Pull the Cat-5 cables through the wall and feed the cables through the back of the mount. Level the mount and tighten the mounting screws.



**Step 2:** Using the HD VIDEO SELECT rotary switch and CAMERA SETTINGS dip switches on the back of the camera, set up the camera's output resolution and functional preferences. See Table: ZoomSHOT 30 DIP Switch Settings and

**4) HD Video Select:** A rotary switch allows the user to choose the HD output video resolution and format. After setting or changing the resolution, reboot the camera to ensure proper operation. If an unassigned rotary selection position is chosen (9, A, B, C or D), the camera will not output video. Simply set the rotary switch to an assigned position to output video. See rotary switch settings below.

Table: ZoomSHOT 30 VIDEO Selections...keep these tables handy for future use.

### Setting the ZoomSHOT 30 Camera:

- Set the desired HD Resolution with the rotary selection switch. If changing the resolution, always reboot the camera to ensure proper operation.

**Note:** For systems with the Quick-Connect USB Mini, the camera must be set to 720p/59.94 (rotary position "0")

- Set the IR ID (1, 2 or 3) of the camera (if it is to respond to the IR SHOT Commander Remote).
- Set the desired image orientation (normal or flipped).

**Step 3:** Follow the sample wiring diagram for connecting the Cat-5 cables to the ZoomSHOT 30 that come in the Quick-Start Guide that ships with your camera, but read and understand the rest of these instructions - especially the next note.



**NOTE:** Check all Cat-5 cables for continuity in advance of the final connection. Label the Cat-5 cables. Plugging the EZ-POWER VIDEO cable into the wrong RJ-45 may cause damage to the camera system and void the warranty. For premise cabling, please use real RJ-45 connectors and crimpers. Please don't use the pull through or EZ type of RJ-45.



**Step 4:** Place the camera onto the camera mount and use the provided ¼"-20 screws to secure the camera to the mount. To dress the cabling, push the extra cable back into the wall opening.



**HINT:** A small piece of black fabric or felt attached to the back of the mount (wall-side) with a small slit to allow cables through may help the overall dressing of the mount and cables.

**Step 5:** For Vaddio Quick-Connects, connect the 24 VDC, 2.08 Amp power supply to a power outlet and to the Quick-Connect Interface. Power will travel down the Power/Video Cat-5 cable to the camera. The camera's LED will be purple while it boots, and in a few seconds, it will turn blue and differential HD video will travel back down the Cat-5 cable to the Quick-Connect. When an image is available, the camera is ready to accept control information from the IR remote control or RS-232 camera controller.

**For QUSB Systems:** When the Quick-Connect USB is done powering up, it will display the Hardware (HW) MAC Address and the IP address on the front LCD screen. If USB streaming is desired, connect a USB 2.0, Type-A male to USB Type-B male cable from the USB Type-B jack of the QUSB to the USB 2.0 Type-A port on the laptop or PC. The Quick-Connect USB should show up on the connected computer as a UVC video USB 2.0 peripheral and the USB stream can be viewed with your desired third-party software. Consult [Connecting the ZoomSHOT 30 to the PC and Program of Choice](#) for more streaming information.

**For QMini Systems:** Connect a USB 2.0, Type-A male to USB Type-B male cable from the USB Type-B jack of the QMini to the USB 2.0 Type-A port on the laptop or PC. The Quick-Connect USB Mini should show up on the connected computer as a UVC video USB 2.0 peripheral and the USB stream can be viewed with your desired third-party software. Consult [Connecting the ZoomSHOT 30 to the PC and Program of Choice](#) for more streaming information.

**For QDVI Systems:** If daisy-chain serial control from a third-party control system is desired, the Address Set command must be sent every time the system is done booting up.



To ensure proper continuity of control and operation of the cameras, RS-232 controllers (such as control systems or joysticks) should be powered on after the camera.

For the AVBMP, connect the 24 VDC, 3.75 Amp power supply to a power output and to the AV Bridge MATRIX PRO. The AV Bridge MATRIX PRO will initialize, power will travel down the Power/Video Cat-5 cable to the camera. The camera's LED will be purple while it boots, and in a few seconds it will turn blue and differential HD video will travel back down the Cat-5 cable to the AV Bridge MATRIX PRO. When an image is available, the camera is ready to accept control information from either the IR remote control or the AV Bridge MATRIX PRO.

You have finished installing your ZoomSHOT 30 System. You may want to go to [Controlling the ZoomSHOT 30 Camera](#), or stay on this page and continue to appreciate the love and care that went into creating these instructions.

## CONTROLLING THE ZOOMSHOT 30 CAMERA

- **IR Remote:** The IR SHOT Commander Remote is the best way to control the camera in real time. The IR remote controller can control the camera's basic functions and enter the OSD (on-screen display) for more advanced controls. The IR remote is a great way to control the camera in real-time. The camera's OSD menu structure is listed below.
- **Web Interface (QUSB):** The Quick-Connect USB's web interface auto-loads the control protocols of the Vaddio camera attached (pretty cool huh?). Full camera controls including CCU (color correction unit) image controls are available from any approved web browser on any computer. The IP address is always displayed on the front panel display of the QUSB so access to the internal web pages is super easy.
- **Web Interface (QMini):** The USB Mini's web interface auto-loads the control protocols of the Vaddio camera attached. Camera set-up and controls are available to the administrator of the system from any approved browser on any computer. The system has two modes; Video Streaming Mode and Web Control Mode. While using the Web Control mode, the camera image is not available for preview. For this reason, the IR SHOT Commander controlling the camera image through the OSD is the best way to control the camera in real time.
- **Web Interface (AV Bridge MATRIX PRO):** A connected AV Bridge MATRIX PRO's web interface auto-loads the control protocols of the Vaddio cameras attached (which is pretty nifty). Full camera controls including CCU (color correction unit) image controls are available from any approved web browser on any computer. The IP address is always displayed under the Network Settings on the front panel display of the AV Bridge MATRIX PRO so access to the internal web pages is a breeze.
- **Telnet Control (QUSB):** The camera can be controlled through the Quick-Connect USB via Telnet session. These exciting commands are listed at the back of the manual.
- **Telnet Control (AV Bridge MATRIX PRO):** The camera can be controlled through the AV Bridge MATRIX PRO via Telnet session. Those enticing commands are listed at the back of the AV Bridge MATRIX PRO manual.
- **RS-232 Control (QUSB and QDVI):** An API is provided for control of the camera over RS-232 (commands in the back of manual).
- **RS-232 Control (QMini):** Connecting the camera's RS-232 port to the QMini allows user to control the camera using operator input from the QMini web interface. If control of the camera with an external control device (like a joystick) is desired instead, the camera's RS-232 port must be connected to the other device. A user cannot have simultaneous serial control of the camera from both an external device and the QMini.
- **RS-232 Control (AV Bridge MATRIX PRO):** An API for Serial control of an AV Bridge MATRIX PRO and its connected cameras is provided just for you at the back of the AV Bridge MATRIX PRO manual.

**Table: ZoomSHOT 30 OSD Menu Structure**

Use this OSD menu with the IR SHOT Commander Remote to make video adjustments (Picture, Color, Exposure, etc...) on the ZoomSHOT 30 camera. Using the IR SHOT Commander Remote is an easy way to set the camera's color and overall picture attributes.

Menu	Controls	Range/Modes	Default	Notes
SSDR	OFF		OFF	Dynamic Range Adjustment
	ON>	1 - 15	8*	*When Dynamic Range is ON
		RETURN<		Return to Main Menu
WHITE BAL	ATW		ON	Auto White Balance - ON
	MANUAL>	RED 0 – 1000	560	Adjust Red Level
		BLUE 0 – 1000	480	Adjust Blue Level
		RETURN<		Return to Main Menu
	AWC→SET			One Push White Balance
	OUTDOOR			Set to Outdoor when room has direct sunlight and blue walls
	INDOOR			Set to Indoor when fluorescent lights start to cause color variation in ATW mode
	MERCURY			
	SODIUM			
BACKLIGHT	OFF		OFF	
	WDR>	LEVEL (LOW / MIDDLE / HIGH)	MIDDLE	Wide Dynamic Range

Menu	Controls	Range/Modes	Default	Notes
		RETURN<		Return to Main Menu
	BLC>	LEVEL (LOW / MIDDLE / HIGH)	MIDDLE	Backlight Compensation
		TOP 1 – 100	30	Adj. parameters for BLC algorithm
		BOTTOM 1 – 100	70	Adj. parameters for BLC algorithm
		LEFT 1 – 100	30	Adj. parameters for BLC algorithm
		RIGHT 1 – 100	70	Adj. parameters for BLC algorithm
		RETURN<		Returns to the Backlight menu
	HLC>	LEVEL (LOW / MIDDLE / HIGH)	MIDDLE	High Light Compensation. When extremely bright light is projected onto the camera.
		MASK TONE 0 – 15	7	
		RETURN<		Return to Main Menu
INTELLIGENCE	OFF	The settings in this section of the On Screen Display are not processed or used by the ZoomSHOT 30 camera.		
FOCUS	MODE	AUTO / MANUAL / ONE PUSH	AUTO	
	ZOOM TRACK	OFF / TRACK / AUTO TRACK	AUTO TRACK	
	ZOOM SPEED	SLOW / MEDIUM / FAST	FAST	
	D-ZOOM	ON (x2-x16) / OFF	OFF	Digital Zoom (keep off for best picture results)
	ZOOM POS INIT	AUTO / MANUAL (x1-x32) / OFF	OFF	Sets initialization zoom position
	USER PRESET	ON (1-128) / OFF	OFF	Do not use
	LENS INIT	MANUAL / AUTO (Day 1-7)	MANUAL	Selecting this begins a lens initialization
	RETURN<			Returns to the main menu
EXPOSURE	BRIGHTNESS	0 – 100	50	
	IRIS	AUTO	AUTO	
		MANUAL>		
		IRIS F-No (F1.6-Close)	F1.6	
		RETURN<		Returns to EXPOSURE menu
	SHUTTER	ESC>	ESC	Rec. left on default settings
		MIN (1/60 – 1/11000)	1/60	
		MAX (1/60 – 1/11000)	1/11000	
		RETURN<		Returns to EXPOSURE menu
		MANUAL>		
		MANUAL (x30-1/16000)	1/120	
		RETURN<		Returns to EXPOSURE menu
		A.FLK		
	AGC	LOW / MEDIUM / HIGH / MANUAL (0dB – 42dB) / OFF	LOW	
	SSNR	LOW / MEDIUM / HIGH / OFF	LOW	Noise reduction - don't use above low
	SENS-UP	OFF / AUTO (x2-x30)	OFF	Leave off
	RETURN<			Returns to the main menu
SPECIAL	DAY/NIGHT	COLOR / B/W / AUTO	COLOR	Leave on color
	DIS	OFF / ON	OFF	Digital Image Stabilization – leave off
	DEFOG	OFF	OFF	Recommend left off
		MANUAL>		
		LEVEL (1-10)	4	
		RETURN<		Returns to SPECIAL menu
		AUTO>		
		LEVEL (1-10)	4	
		RETURN<		Returns to SPECIAL menu
	COMM ADJ	BAUD RATE	38400	DO NOT CHANGE
		UART MODE	8-E-1	DO NOT CHANGE
		RETURN<		
	IMAGE ADJ	H-REV (OFF / ON)	OFF	Reverses the image horizontally

Menu	Controls	Range/Modes	Default	Notes
		V-REV (OFF / ON)	OFF	Reverses the image vertically Please use Image Flip DIP on rear of camera instead.
		SHARPNESS (ON / OFF)	ON	
		ON (1-31)	15	
		RETURN<		
		MONITOR	USER	
		USER		
		GAMMA (0.20-1.0)	0.45	
		Color Level (0-100)	50	Chroma/Saturation
		RESET		Resets USER menu to defaults
		RETURN<		
		LCD		
		GAMMA (0.2-1.0)	0.5	
		Color Level (1-100)	50	
		RESET		
		RETURN<		Returns to IMAGE menu
		RETURN<		Returns to SPECIAL menu
	DISPLAY	CAM TITLE (ON / OFF)	OFF	ON allows for a custom 15-character title to be displayed over camera video
		CAM ID (ON / OFF)		
		CAM INFO (ON / OFF)		
		ZOOM MAG (ON / OFF)	OFF	
		OSD COLOR (WHITE / YELLOW / GREEN / RED / BLUE)	WHITE	Changes the color of the On Screen Display Menu
		LANGUAGE (ENGLISH, KOREAN, JAPANESE, CHINESE, FRENCH, GERMAN, SPANISH, ITALIAN, RUSSIAN, PORTUGUESE)	ENGLISH	Changes the language that the On Screen Display Menu is shown in
		RETURN<		
	VIDEO OUT FORMAT	FORMAT	---	Video resolution. Use the rear rotary to set, do not change here.
		CVBS (ON / OFF)	OFF	
		COMPONENT (ON / OFF)	ON	Do not change
		ADJUST	---	Executes changes in this menu. Do not use
		RETURN<		Returns to SPECIAL menu
	RETURN<			Return to Main Menu
RESET		Resets the camera's OSD. <b>A factory reset of the camera with the DIP switches is recommended instead of OSD reset.</b>		
EXIT				Exit the OSD

### OSD recovery

If you change baud rate in the OSD (Under Special > COMM ADJ) and then exit the OSD, you will lose both IR and serial control of your camera. Power cycling the camera will restore control and return the baud rate back to the required 38400. **This process could take up to five minutes.**

## QUICK-CONNECT USB AND QUICK-CONNECT USB MINI DETAILS AND COMPATIBILITY

The Quick-Connect USB and USB Mini Interfaces use UVC (Universal Video Class) drivers for USB 2.0 video and do not require the loading of any other drivers to run on the PC. The maximum USB streaming resolution is 720p/30. Resolution is auto-negotiated.

### Compatibility - Web Browsers

- Internet Explorer
- Safari
- Chrome
- Firefox

### Compatibility with Soft Conferencing Clients

The Quick-Connect USB and USB Mini are compatible with most soft conferencing clients (such as Google Hangouts, Zoom, Vido, and Skype for Business) and with standards-based media players, and new programs that it can provide a video source to are released all the time.

UC soft-client and other software manufacturers update their products to add new features or interfaces. This may introduce changes in the way that they interact with UVC standards-based or MJPEG video sources on your existing hardware. Vaddio provides a continuing research and development effort to ensure compatibility with other manufacturer's products. If incompatibilities are found, contact our Support team and they will investigate for possible solutions.

### USB 2.0 UVC Driver Compatibility

The USB 2.0 UVC (Universal Video Class) video driver resolution table is an internal list of resolutions available for the Host PC and the Quick-Connect USB Mini to negotiate and use for any approved/tested USB application. Typically, the highest resolution possible between both the PC and Quick-Connect USB Mini is used.

**Table: Supported UVC Resolutions**

Format	Resolution	Frame Rate	Aspect Ratio
<b>MJPEG</b>  <b>Note:</b> The bandwidth of USB 2.0 limits the maximum resolution to 720p/30 using MJPEG compression.	1280 x 720	15/30	16:9
	960 x 544	15/30	16:9
	704 x 576	15/30	4:3
	640 x 480	15/30	4:3
	640 x 360	15/30	16:9
	424 x 240	15/30	4:3
	352 x 240	15/30	4:3
	320 x 240	15/30	4:3
	320 x 180	15/30	16:9

## QUICK-CONNECT USB INTERNAL WEB PAGES AND CONTROL

The internal web pages will allow control of the Quick-Connect USB and control of the attached camera via a network connection. These web pages will allow the user or administrator to set security passwords, change the IP address, view diagnostics, access the firmware upgrade page and more!

### DHCP IP Set-up (Dynamic Host Configuration Protocol):

If the LAN has a DHCP (dynamic host configuration protocol) server, then the IP address, gateway and routing information will automatically be assigned. The QUSB firmware is defaulted to DHCP and will attempt to dynamically obtain an IP address using DHCP, but it will fall back to the default address of **169.254.1.1** if no DHCP server can be found.

### Static IP Set-up:

The static IP can be assigned either through the network or directly with a computer using a network cable (depending on the age of the computer, you may need a cross-over network cable). Either way the steps are the same for network or direct connection to a computer. The default address of the QUSB camera is **169.254.1.1** and the Subnet mask is **255.255.0.0**. Different computer OS types all have their own way of doing things (without question), but they are essentially doing the same stuff, changing the IP address so the web pages of the QUSB are accessible.

## Quick-Connect USB Web Pages Tour

### QUSB Screen Shot: Login

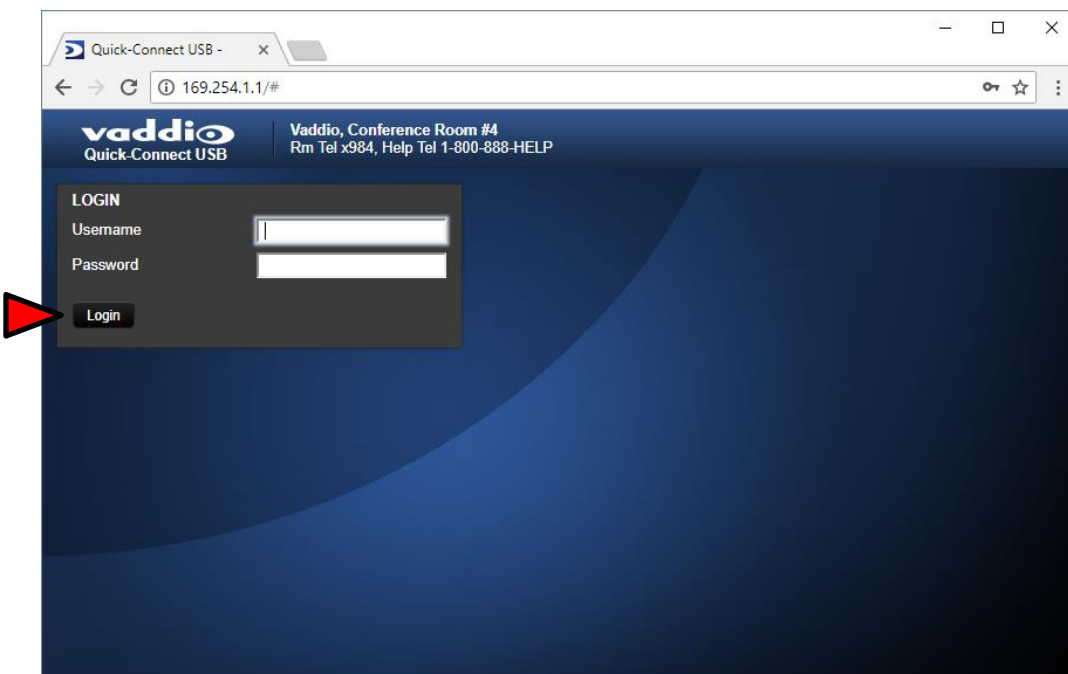
The QUSB web interface is intended as a user's camera control page at one level, and an administrator's management tool at another level, which requires password authentication for access.

The Login Page will appear if there is a user password assigned by the administrator. Assigning a user password can limit access to camera controls to only trusted users. The administrator can set the password for the user account (whose Username will be 'user') from the admin interface. If no user password is assigned, the web page will automatically open to the Camera Control page.

Admin access has the following default credentials:

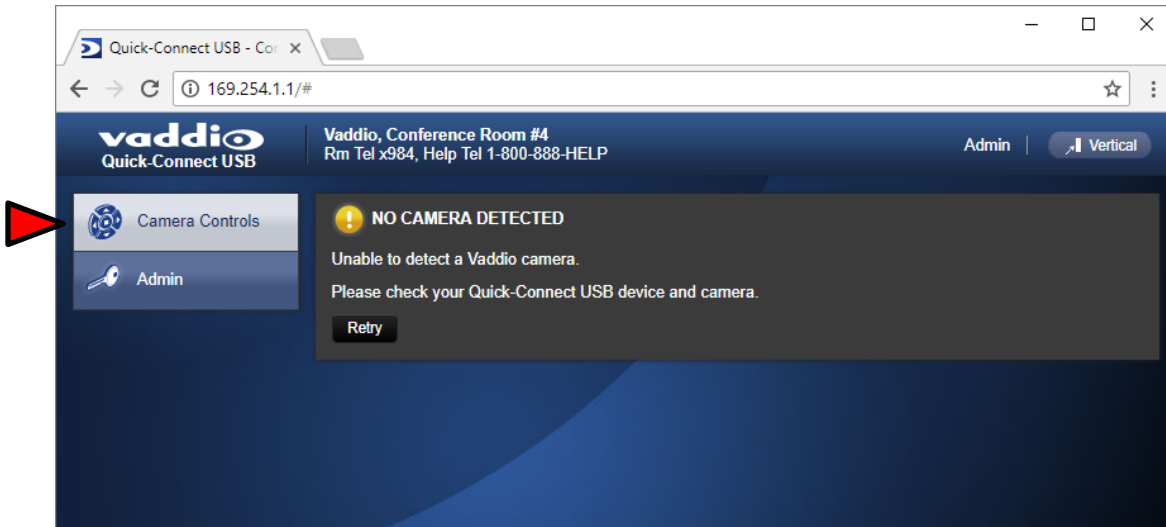
Username: admin

Password: password

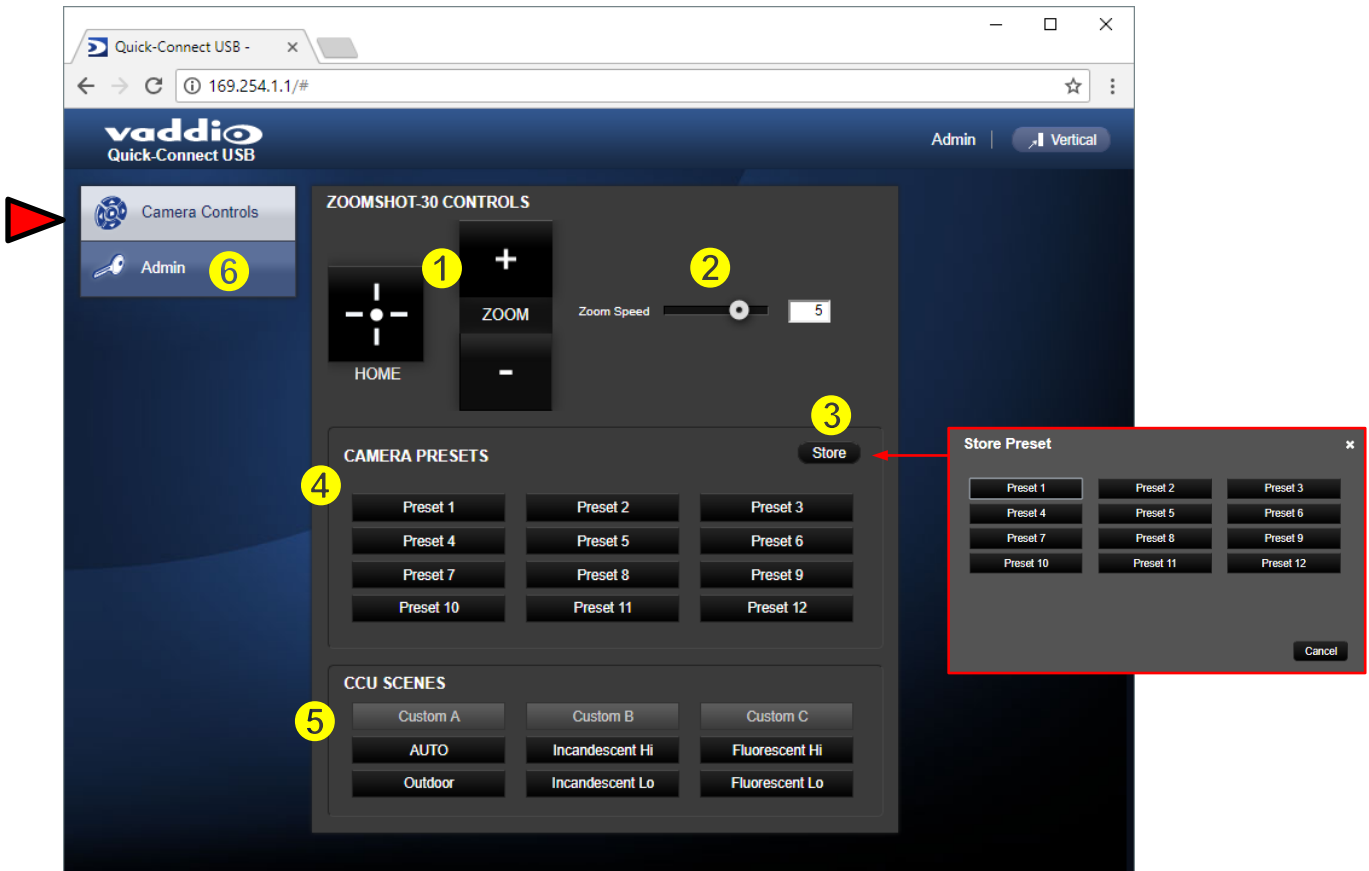


### QUSB Screen Shot: Camera Control Page - No Camera Detected

The No Camera Detected window will appear if the Quick-Connect USB has no communication with the camera. Check the camera power and serial connections if no camera is found within 30 seconds of initialization. The QUSB controls the camera over the serial connection.



## QUSB Screen Shot: User Menu - Camera Control Page

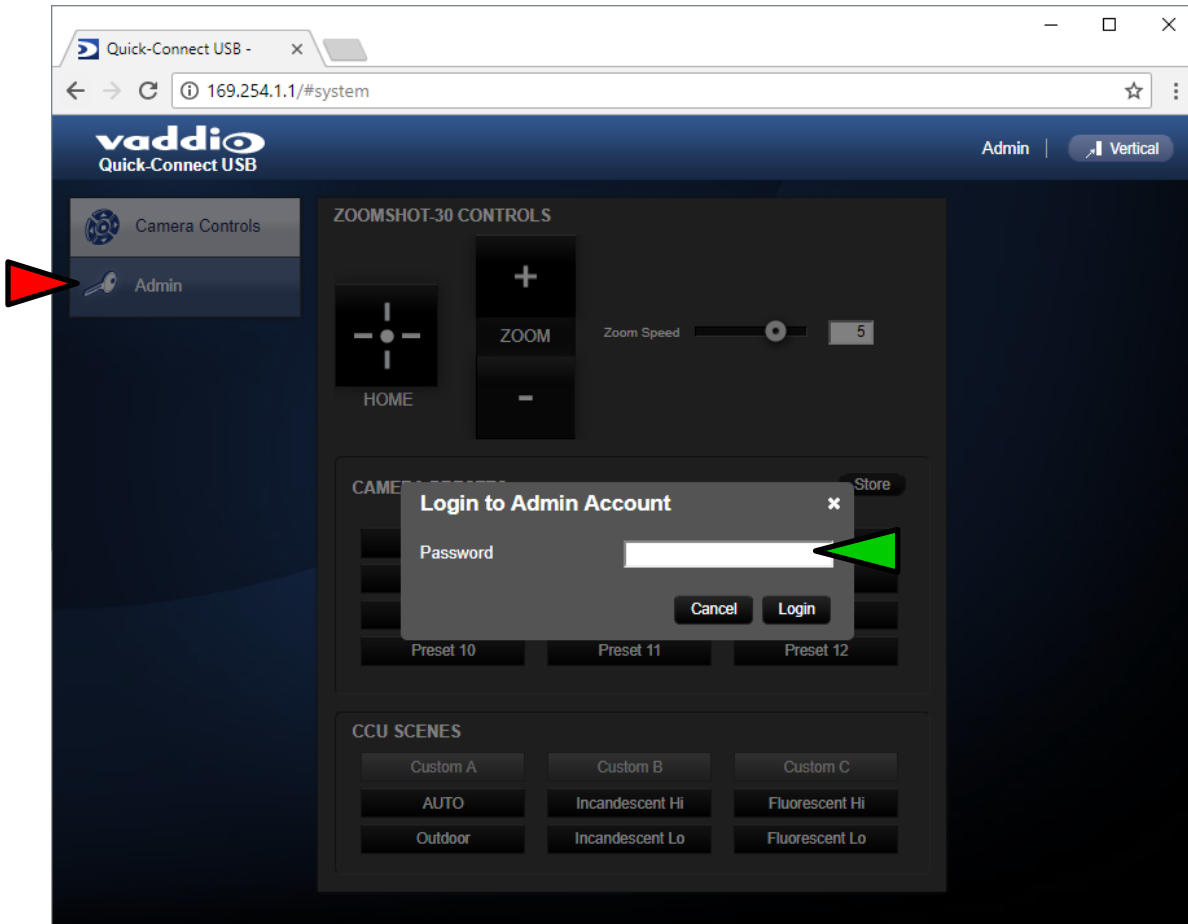



- 1) **Zoom and Home Controls:** The camera's zoom lens can be controlled with the "+" to zoom-in and the "-" to zoom-out the ZoomSHOT 30 camera. The home button will move the camera to the home zoom position.
- 2) **Zoom Speed Control:** The speed for both the Zoom controls can be adjusted with the Zoom Speed Slider. For tighter shots, it is recommended that the slower speed is used.
- 3) **Store Preset Button:** Clicking the Store button opens up a Store Preset pop-up dialog box. To set presets, set up the camera shot, click on choice of preset number (1 through 12). The preset is stored and the dialog box closes.
- 4) **Camera Presets:** Twelve (12) presets can be recalled simply by clicking a preset number.
- 5) **CCU Scenes:** The user has access to the CCU scenes set and stored by the Admin. There are three (3) user definable presets and six (6) presets preconfigured by the technical folks at Vaddio (really Scott set them all) that are meant to be used in certain lighting scenarios. These lighting presets included: Automatic, Incandescent Hi, Incandescent Lo, Fluorescent Hi, Fluorescent Lo and Outdoor.
- 6) **Administration Menu:** By clicking on the Admin menu bar, the Admin Login screen will appear. The default Admin password is: password. The Admin menu keys are exposed.



### QUSB Screen Shot: Admin Log-in

By selecting the Admin Menu Bar, the Admin Login password pop-up window will appear and await the entry of the password. By entering the Admin menus, 9 more menu keys appear on the left side of the screen. The default Admin Account password is **password**.



 The default Admin Account password is **password**

## Cancel and Save Buttons



**Note:** At the bottom of each of the admin menus, there is a Cancel and Save button. Please click on the Save button before exiting each web page if the changes made require retention. Otherwise hit Cancel to delete any changes made to the page while exiting.

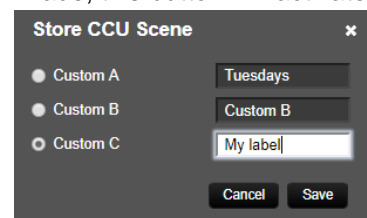
## QUSB Screen Shot: Admin Menu - Camera Settings Page

The Camera Settings page provides the parameters to allow the end user to match the camera to the environment, set the CCU presets and make startup assignments.

- 1) **Load Preset at Startup:** Check this box to move the camera to a predefined preset location that the camera moves to when the QUSB powers up. Use the pull-down menu to select the Preset 1 through 12 to be loaded when this box is checked.
- 2) **Load CCU Scene at Startup:** Check this box to load a CCU (color correction unit) Scene into the camera when the QUSB powers up. The pull-down menu will allow the selection of one of the 6-factory scenes, or any of the 3-user defined scenes.
- 3) **CCU Scenes:** Click on any of these 9 buttons to load one of the CCU scenes into the camera. These scenes can be fine-tuned if changes are needed, and stored into any of the three admin defined scenes.

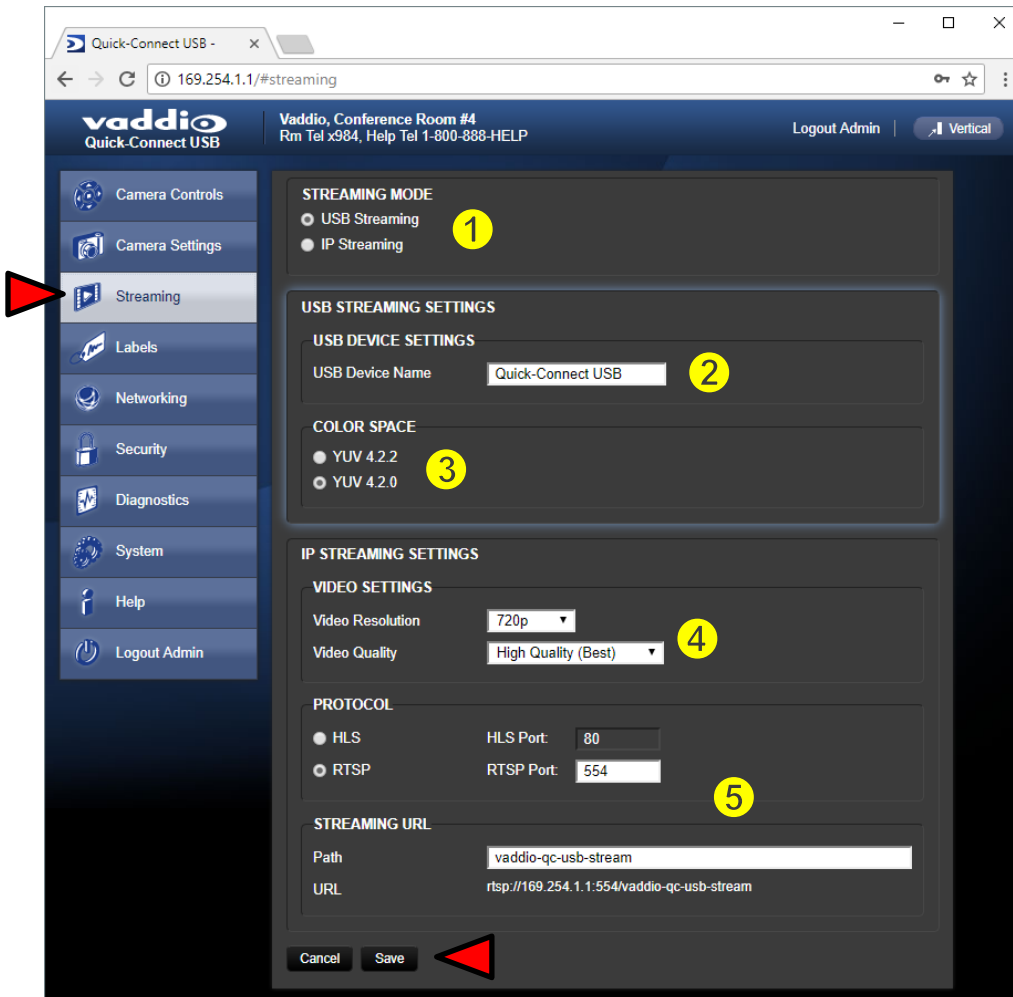
**4) Color Settings:** When painting or shading camera scenes for specific lighting situations or environments, these attributes can be adjusted for matching cameras in the same area. The parameters within the Color Settings section are defined below (top to bottom):

- **Auto Iris check box:** When checked, the camera will operate in Auto Iris mode, when unchecked, the camera will be in Manual Iris mode and allow adjustment of Iris and Iris Gain levels.
  - **Iris:** Move adjustment slider as required to adjust the iris opening. A numeric value will be displayed in the box to the right of the slider.
  - **Gain:** Move adjustment slider as required for amount of iris gain desired. Numeric value will be displayed in the box to the right of the slider.
- **Auto White Balance check box:** When checked, camera will operate in Auto White Balance Mode, when unchecked, the camera will be in Manual White Balance Mode to allow for adjustment of Red and Blue Gain.
  - **Red Gain:** Move the adjustment slider as required for amount of Red Gain desired. A numeric value will be displayed in the box to the right of the slider.
  - **Blue Gain:** Move the adjustment slider as required for amount of Blue Gain desired. Numeric value will be displayed in the box to the right of the slider.
- **Detail:** Move the adjustment slider as required for amount of detail (Aperture) desired. Numeric value will be displayed in the box to the right of the slider. **Note:** If the detail is too high, the video can look grainy and appear wicked noisy.
- **Chroma:** Move the adjustment slider as required for the amount of Chroma (Color Vibrancy) desired. A numeric value will be displayed in the box to the right of the slider.
- **Store CCU Scene button:** Once the desired scene adjustments have been made, this button will activate a pop-up menu that can be used to store this scene into one of the three User Defined Scene locations. These user defined scenes can be named as required for clarity and can be adjusted and re-saved at any time.



**5) Custom CCU Scene Labels:** The labels for the (3) User Defined customizable Scenes can be changed as needed. Move the cursor into the appropriate window and edit the text. Press Save to store these changes or press Cancel to exit this window.

## QUSB Screen Shot: Admin Menu - Streaming Page

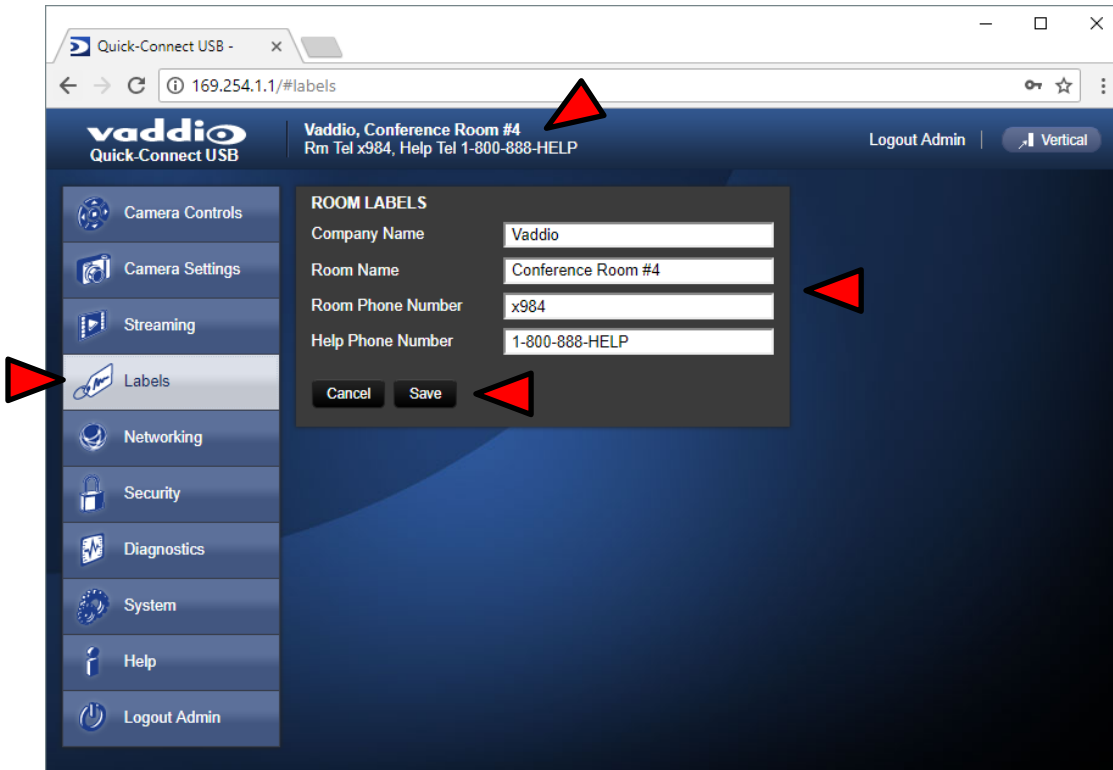


- 1) **Streaming Mode:** Streaming can be set for either USB 2.0 streaming (MJPEG) or IP streaming (H.264); but not both at the same time. The QUSB can stream USB and accept IP control, or it can IP stream with IP control. Choose the streaming mode here.
- 2) **USB Device Name:** Allows the user to use a “friendly name” per system. In a BYOD format, the user has the ability to move between different UC conference rooms and have the ability to assign the PC’s USB resources to that room.
- 3) **Color Space:** The UVC drivers will negotiate the color depth, but this parameter allows the user to reduce the color depth to 4:2:0, which is used with the older/cheaper webcams and applications, where image quality is not as critical. The 4:2:2 color is used by many applications that take advantage of the performance of the camera where the colors are more vibrant and precise.
- 4) **IP Streaming Settings:** The Video Settings allow the selection of the target performance for the IP Streaming. The QUSB is set up for a variable bit rate and the user can select the video resolution and the quality, such as High Quality (Best), Standard Quality (Better) and Low Bandwidth (Good). Every effort to eliminate *stupefyingly bad combinations* with the 5 or 6 parameters that make up the image size, quality, bit rate, bandwidth etc... has been made, so you can’t pick 1080p at a bit rate of 128Kbps, which would look totally wicked awful - and probably wouldn’t work anyway.
- 5) **Streaming Protocol and URL:** Admin chooses the streaming type and the port number for RTSP. The HLS port is always on 80. The supported protocols are RTSP and HLS (Apple’s HTTP Live Streaming). RTSP is best for live applications, where HLS serves the Apple iOS devices and is better for playback due to the amount of buffering the HLS has built-in. The Streaming URL auto-populates and that path can be changed.

When finished setting up the streaming parameters, click Save to put the changes into effect or cancel, which will not save the configuration.

### QUSB Screen Shot: Admin Menu - Room Labels

The Room Labels menu allows the administrator to label the company name, room name, room phone and help phone on a per QUSB basis. The labels appear on every page at the top/middle of the page. Simply enter the room information and click Save.



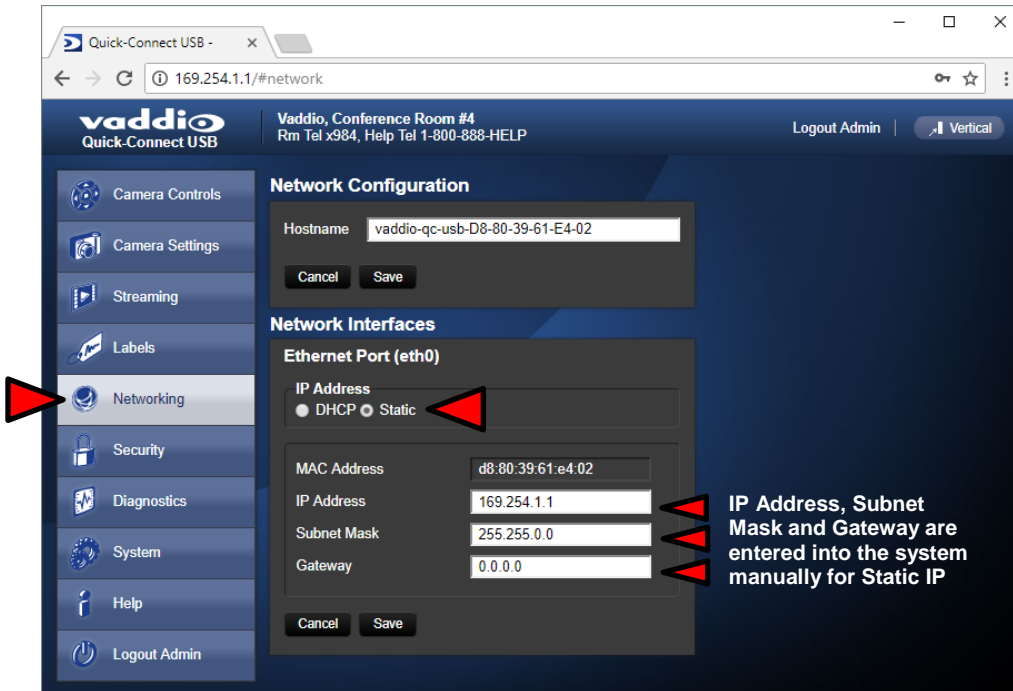
### QUSB Screen Shot: Admin Menu – Networking – DHCP Configuration

Under the Networking menu, the Network Configuration and Network Interfaces are displayed. This is where the Network administrator assigns either DHCP or a Static address and the associated parameters. The QUSB is set to DHCP by default.



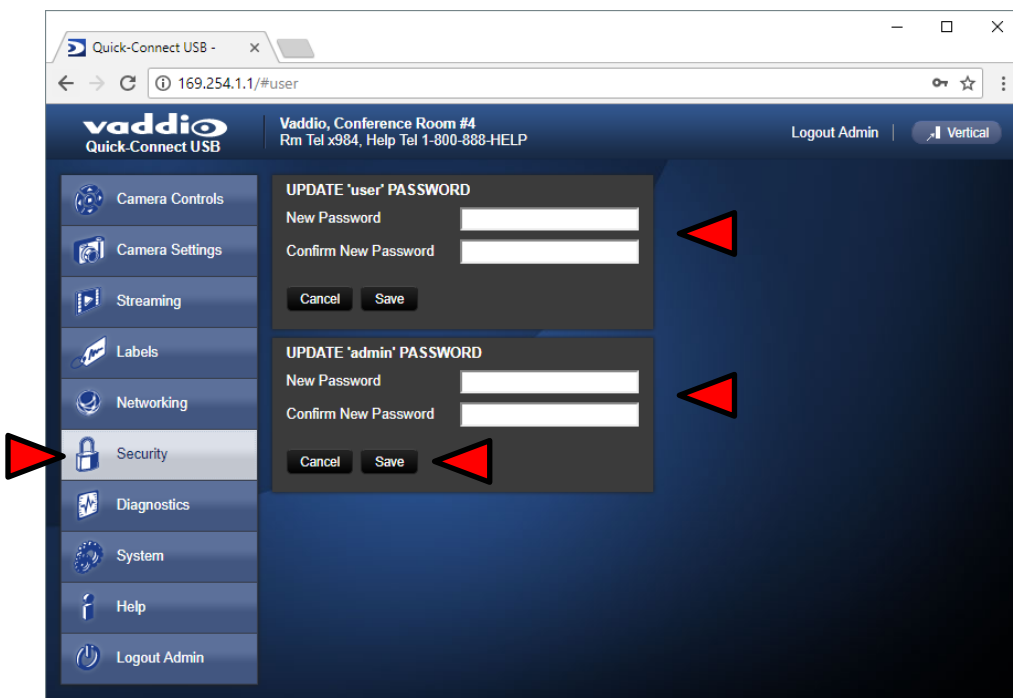
### QUSB Screen Shot: Admin Menu – Networking – Static IP Configuration

If Static IP is used, the IP Address, Subnet Mask and Gateway are manually entered. Click on Save to keep the Static IP information or Cancel to cancel.



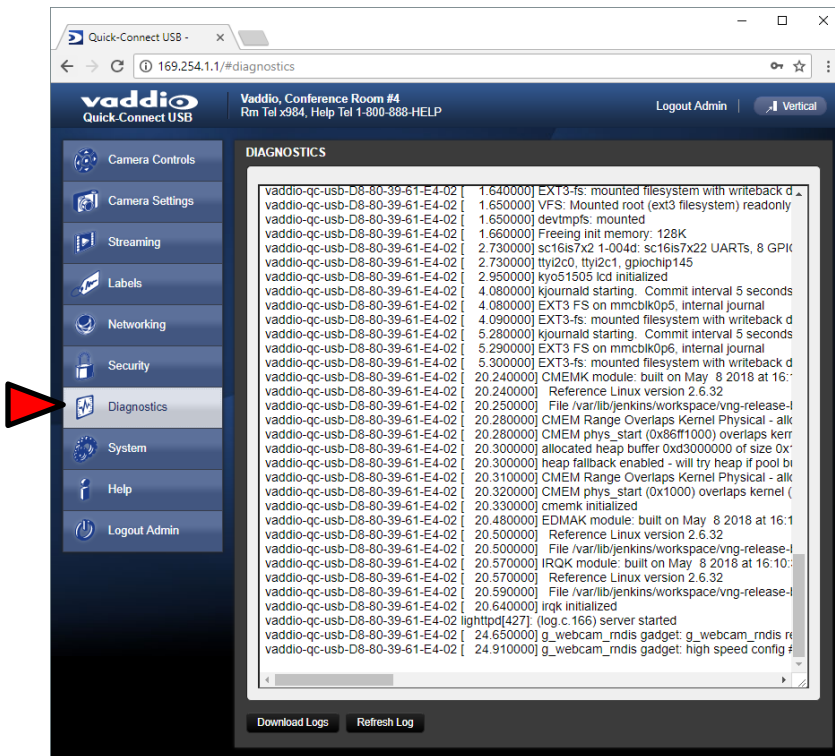
### QUSB Screen Shot: Admin Menu - Security

The Security menu allows the Admin to create or update the “user” password and update the default or current “admin” password. Updating the “user” password for the first time will create a secure login page when the web interface is first brought up. The default “admin” password is: **password**. The Network administrator can reassign the user name and password as well as the admin password. There is only one “user” password and one “admin” password at any given time. If changes are made, click on Save to store the change.



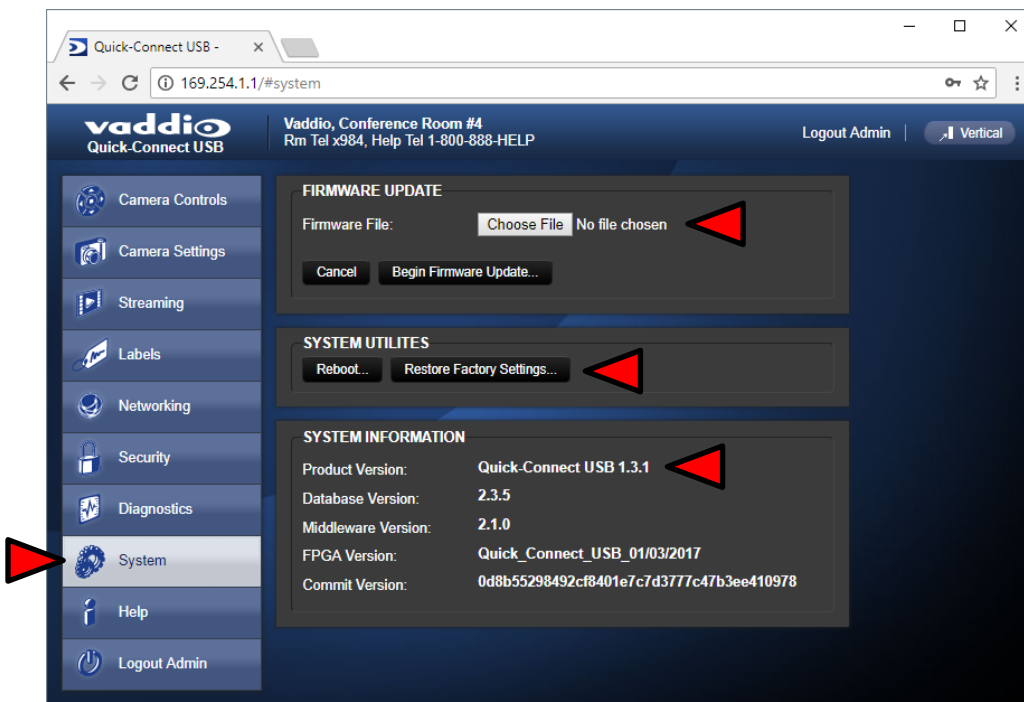
### QUSB Screen Shot: Admin Menu - Diagnostics

Diagnostics menu button will display the diagnostic log. This may help the Vaddio technical support team diagnose issues with the QUSB and the attached camera.



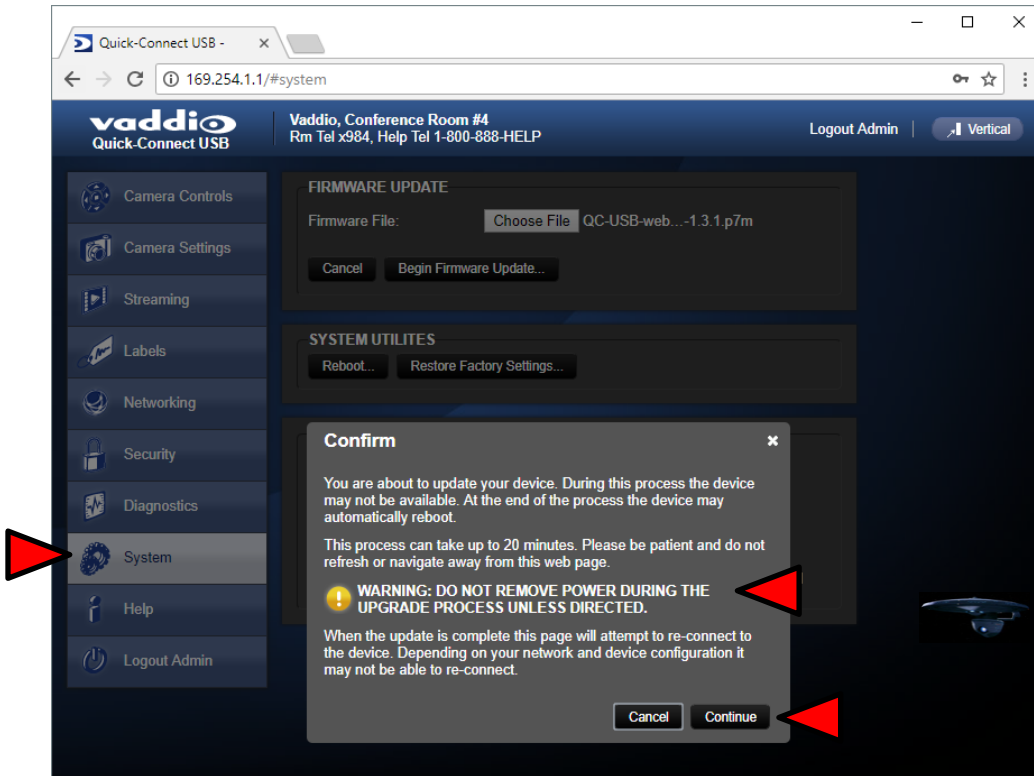
### QUSB Screen Shot: Admin Menu - System Menu

The System Menu is where the Firmware Updates are performed. There will be firmware updates and upgrades over the life of the Quick-Connect USB. The file for the firmware update is chosen in this menu and the update is started here too. A remote system Reboot and Restore to Factory Settings is also available.



### QUSB Screen Shot: Admin Menu - Update Confirmation

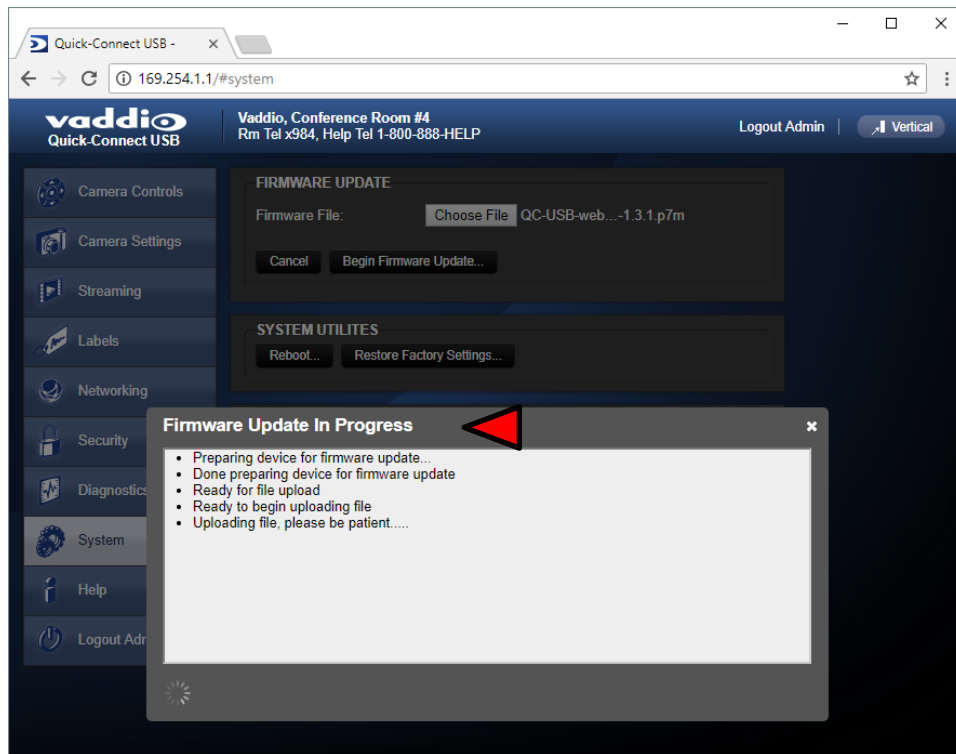
After clicking on “Begin Firmware Update...” a confirmation pop-up and warning will be displayed. Please contact Vaddio Technical Support for assistance with updates if required. Please read and completely understand the pop-up warnings as it is easy to lose patience waiting for updates. Click on continue to start the update.





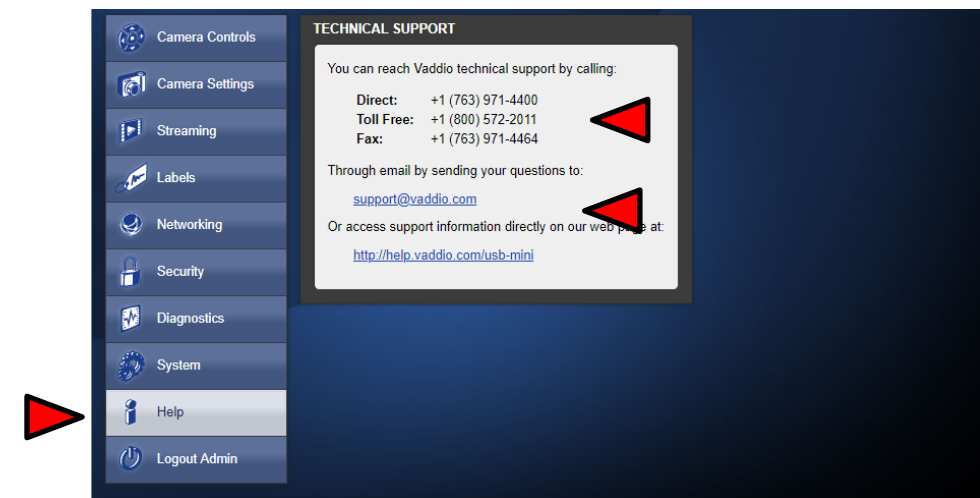
### QUSB Screen Shot: Admin Menu - Update in Progress

After the firmware load has been started, a pop-up screen will advise patience and notify, in terms of a percentage completed, the progress of the firmware update load. Again, please don't interrupt the firmware load.



### QUSB Screen Shot: Admin Menu - Help

Service/Help information can be found under the Help menu. Phone numbers and e-mail to contact Support are listed here. A direct link to our online support resources like manuals, FAQ's and firmware files is also available.



#### TECHNICAL SUPPORT NOTE:

**Please work with your Network Administrator prior to calling Vaddio for technical support. Please have on-site network personnel initiate tech support calls with Vaddio only.**

## QUICK-CONNECT USB MINI INTERNAL WEB PAGES AND CONTROL

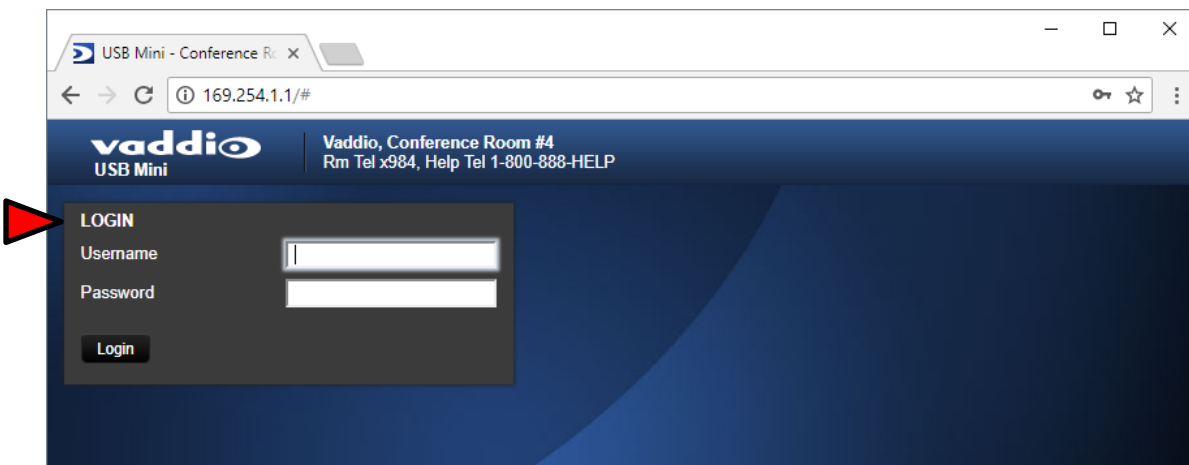
The QMini is capable of streaming video over USB, or using IP over USB to control the connected camera. To toggle the QMini's control mode press the 'MODE' button on the device See Front Panel with Feature Call-outs. The internal web pages will allow control of the Quick-Connect USB Mini and control of the attached camera via a network connection. These web pages will allow the user or administrator to set security passwords, change the IP address, view diagnostics, access the firmware upgrade page and more!

### Quick-Connect USB Mini Web Pages Tour

#### QMini Screen Shot: Login

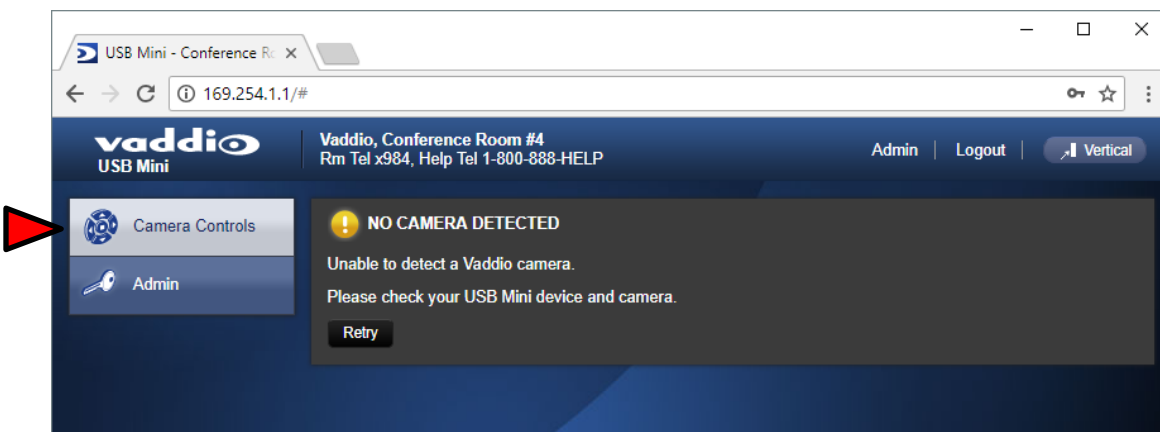
The QMini web server is intended as a user's camera control page at one level, and an administrator's management tool at another level, which requires password authentication for access.

The Login Page will appear if there is a user name assigned by the administrator. The administrator can set the password for the User account. If no user password is assigned, the web page will automatically open to the camera control page when the USB streaming mode is toggled to web server control mode. In web server mode, the video is switched off, so as mentioned repetitively several times earlier, the IR SHOT Commander Remote is the best way to control the camera in real time.

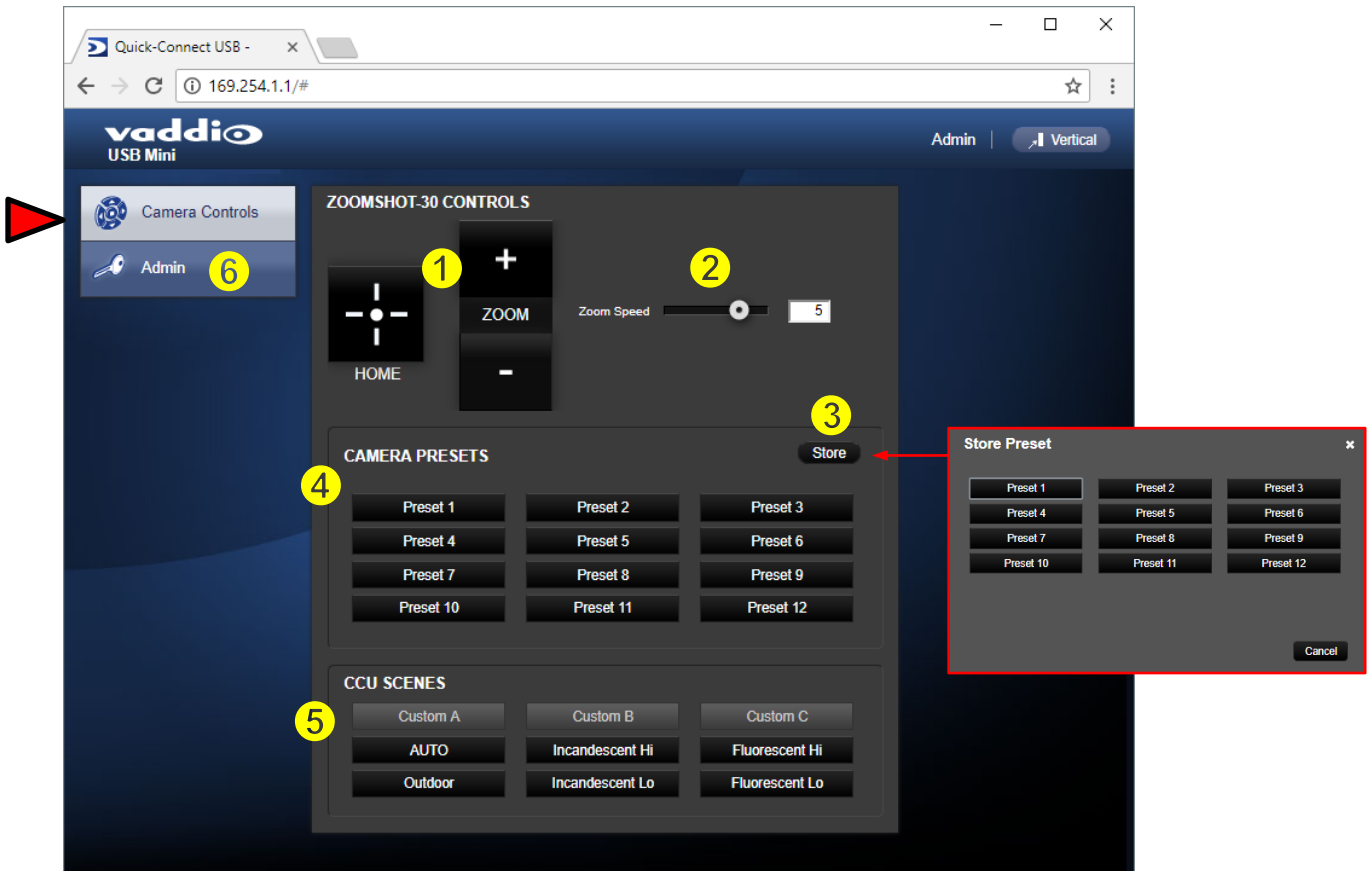


#### QMini Screen Shot: Camera Control Page - No Camera Detected

The No Camera Detected window will appear if the Quick-Connect USB Mini has no communication with the camera. Check the camera power and serial connections if no camera is found within 30 seconds of initialization. The USB Mini controls the camera over the serial connection.



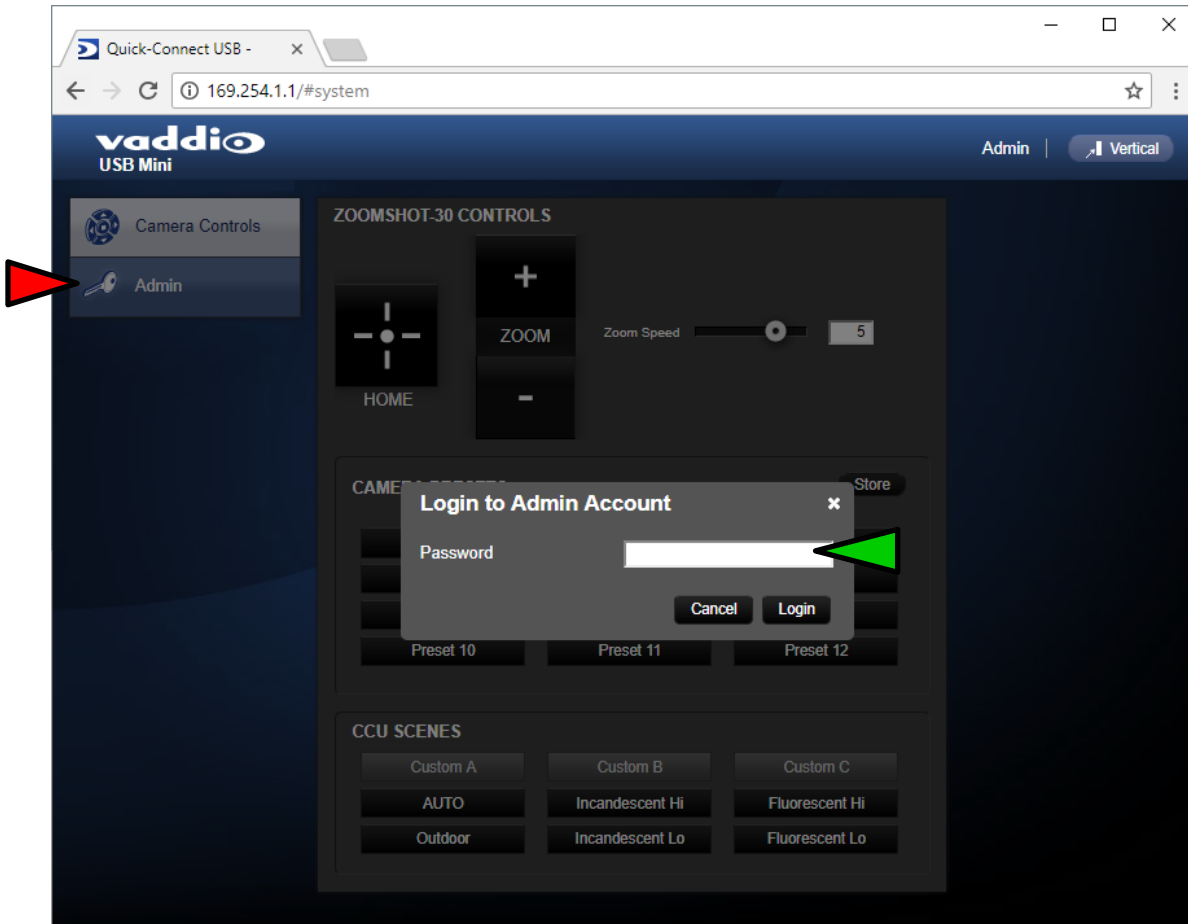
## QMini Screen Shot: User Menu - Camera Control Page




- 1) **Zoom and Home Controls:** The camera's zoom lens can be controlled with the "+" to zoom-in and the "-" to zoom-out the ZoomSHOT 30 camera. The home button will move the camera to the home zoom position.
- 2) **Zoom Speed Control:** The speed for both the Zoom controls can be adjusted with the Zoom Speed Slider. For tighter shots, it is recommended that the slower speed is used.
- 3) **Store Preset Button:** Clicking the Store button opens up a Store Preset pop-up dialog box. To set presets, set up the camera shot, click on choice of preset number (1 through 12). The preset is stored and the dialog box closes.
- 4) **Camera Presets:** Twelve (12) presets can be recalled simply by clicking a preset number.
- 5) **CCU Scenes:** The user has access to the CCU scenes set and stored by the Admin. There are three (3) user definable presets and six (6) presets preconfigured by the technical folks at Vaddio (really Scott set them all) that are meant to be used in certain lighting scenarios. These lighting presets included: Automatic, Incandescent Hi, Incandescent Lo, Fluorescent Hi, Fluorescent Lo and Outdoor.
- 6) **Administration Menu:** By clicking on the Admin menu bar, the Admin Lgoin screen will appear. The default Admin password is: password. The Admin menu keys are exposed.

### QMini Screen Shot: Admin Log-in

By selecting the Admin Menu Bar, the Admin Login password pop-up window will appear and await the entry of the password. By entering the Admin menus, 9 more menu keys appear on the left side of the screen. The default Admin password is **password**.



 The default Admin Account password is **password**

### Cancel and Save Buttons



**Note:** At the bottom of each of the admin menus, there is a Cancel and Save button. Please click on the Save button before exiting each web page if the changes made require retention. Otherwise hit Cancel to delete any changes made to the page while exiting.

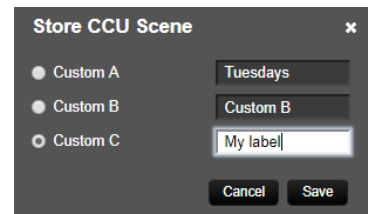
## QMini Screen Shot: Admin Menu - Camera Settings Page

The Camera Settings page provides the parameters to allow the end user to match the camera to the environment, set the CCU presets and make startup assignments.

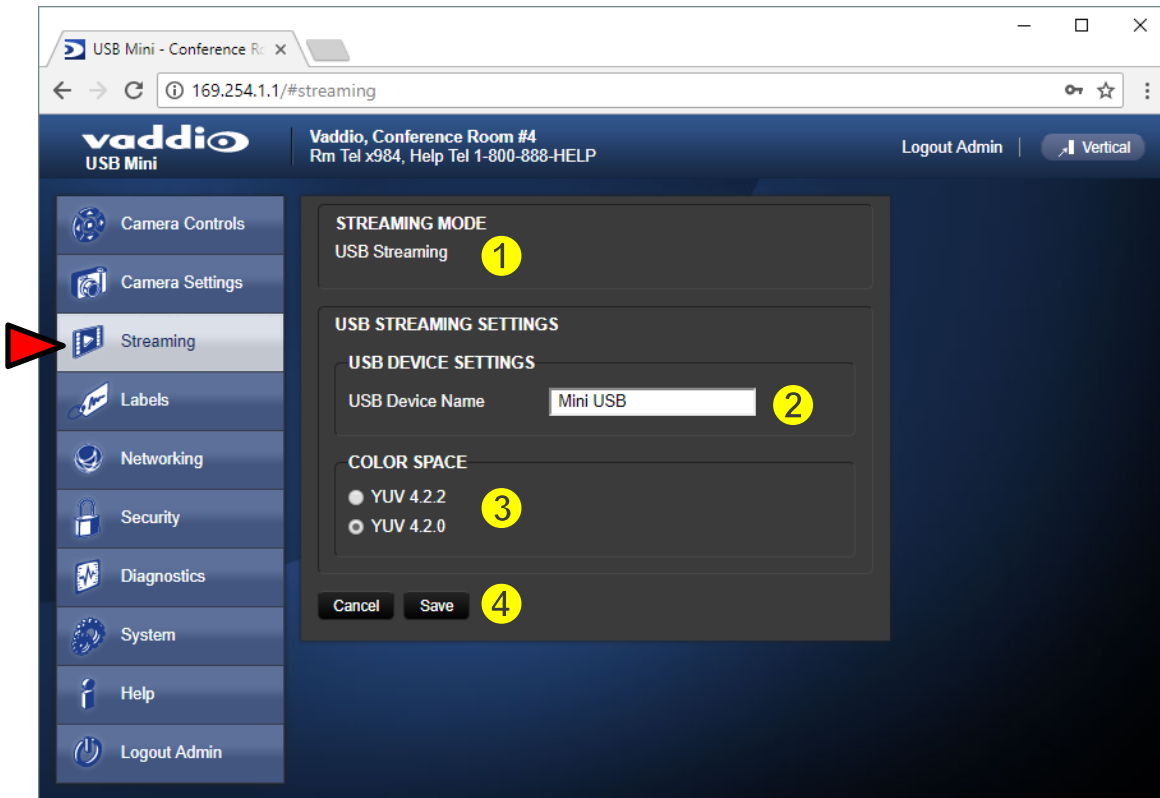
- 1) **Load Preset at Startup:** Check this box to move the camera to a predefined preset location that the camera moves to when the QUSB powers up. Use the pull-down menu to select the Preset 1 through 12 to be loaded when this box is checked.
- 2) **Load CCU Scene at Startup:** Check this box to load a CCU (color correction unit) Scene into the camera when the QUSB powers up. The pull-down menu will allow the selection of one of the 6-factory scenes, or any of the 3-user defined scenes.
- 3) **CCU Scenes:** Click on any of these 9 buttons to load one of the CCU scenes into the camera. These scenes can be fine-tuned if changes are needed, and stored into any of the three admin defined scenes.
- 4) **Color Settings:** When painting or shading camera scenes for specific lighting situations or environments, these attributes can be adjusted for matching cameras in the same area. The parameters within the Color Settings section are defined below (top to bottom):
  - **Auto Iris check box:** When checked, the camera will operate in Auto Iris mode, when unchecked, the camera will be in Manual Iris mode and allow adjustment of Iris and Iris Gain levels.

- **Iris:** Move adjustment slider as required to adjust the iris opening. A numeric value will be displayed in the box to the right of the slider.
- **Gain:** Move adjustment slider as required for amount of iris gain desired. Numeric value will be displayed in the box to the right of the slider.
- **Auto White Balance check box:** When checked, camera will operate in Auto White Balance Mode, when unchecked, the camera will be in Manual White Balance Mode to allow for adjustment of Red and Blue Gain.
  - **Red Gain:** Move the adjustment slider as required for amount of Red Gain desired. A numeric value will be displayed in the box to the right of the slider.
  - **Blue Gain:** Move the adjustment slider as required for amount of Blue Gain desired. Numeric value will be displayed in the box to the right of the slider.
- **Detail:** Move the adjustment slider as required for amount of detail (Aperture) desired. Numeric value will be displayed in the box to the right of the slider. **Note:** If the detail is too high, the video can look grainy and appear wicked noisy.
- **Chroma:** Move the adjustment slider as required for the amount of Chroma (Color Vibrancy) desired. A numeric value will be displayed in the box to the right of the slider.
- **Store CCU Scene button:** Once the desired scene adjustments have been made, this button will activate a pop-up menu that can be used to store this scene into one of the three User Defined Scene locations. These user defined scenes can be named as required for clarity and can be adjusted and re-saved at any time.

5) **Custom CCU Scene Labels:** The labels for the (3) User Defined customizable Scenes can be changed as needed. Move the cursor into the appropriate window and edit the text. Press Save to store these changes or press Cancel to exit this window.



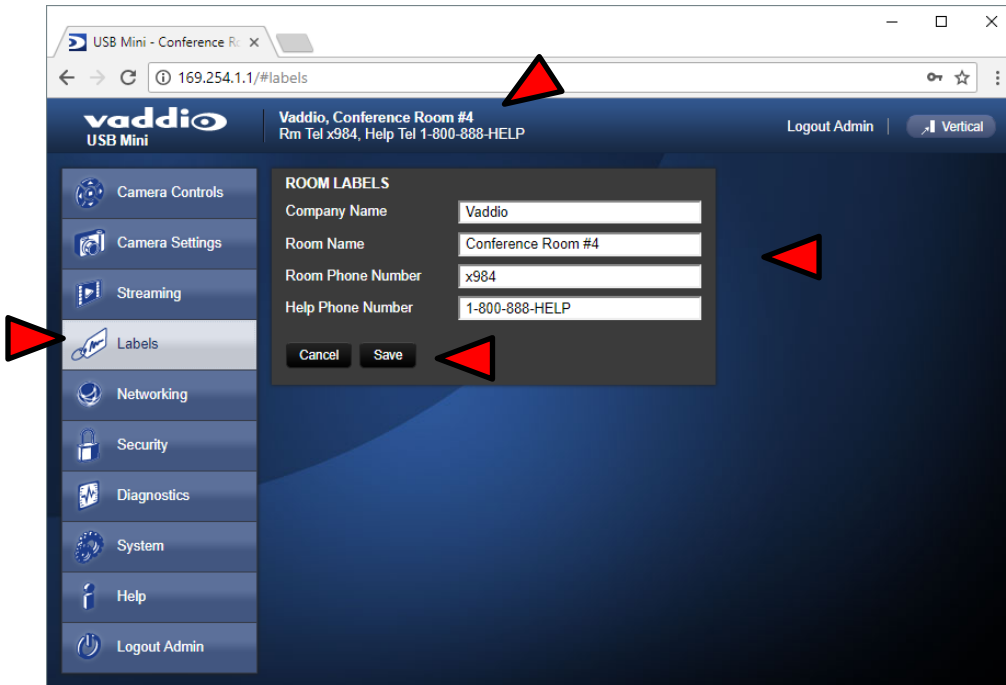
## QMini Screen Shot: Admin Menu - Streaming Page



- 1) **Streaming Mode:** Streaming for the USB Mini is USB 2.0 streaming (MJPEG).
- 2) **USB Device Name:** The USB device “friendly” name is displayed here. This parameter is editable.
- 3) **Color Space:** The UVC drivers will negotiate the color depth, but this parameter allows the user to reduce the color depth to 4:2:0, which is used with the older/cheaper webcams and applications, where image quality is not as critical. The 4:2:2 color is used by many applications that take advantage of the performance of the camera where the colors are more vibrant and precise.
- 4) When finished setting up the streaming parameters, click **Save** to put the changes into effect or cancel, which will not save the configuration.

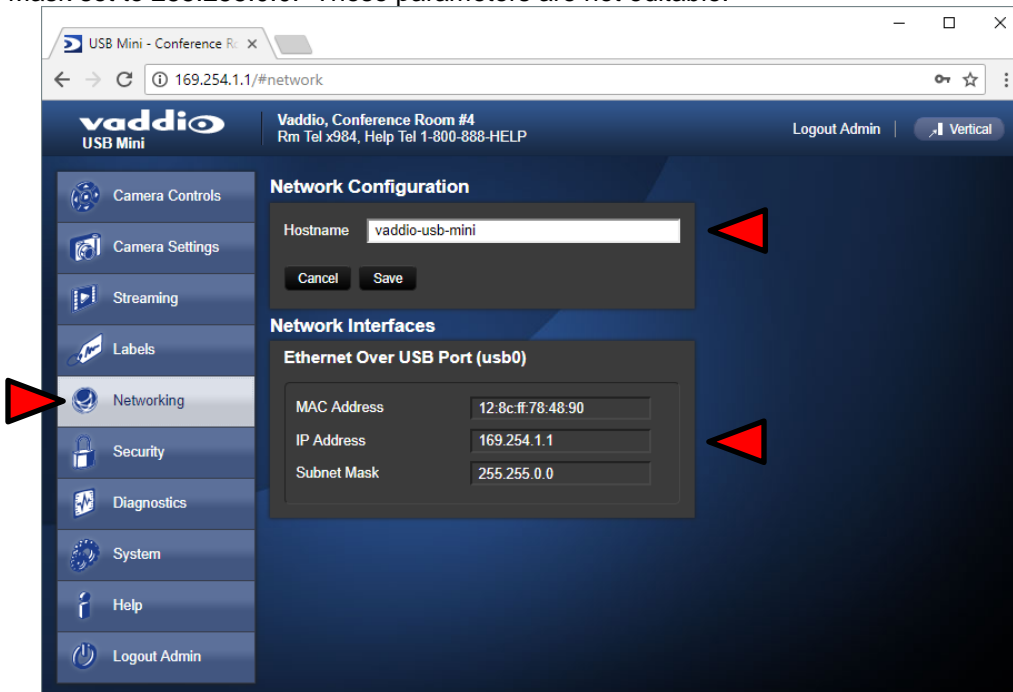
### QMini Screen Shot: Admin Menu - Room Labels

The Room Labels menu allows the administrator to label the company name, room name, room phone and help phone on a per USB Mini basis. The labels appear on every page at the top/middle of the page. Simply enter the room information and click Save.



### QMini Screen Shot: Admin Menu - Networking

Under the Networking menu, the Network Configuration page displays the Hostname of the device. The USB Mini uses Ethernet over the USB port. The MAC Address is unique, the IP address is set to 169.154.1.1 and the Subnet Mask set to 255.255.0.0. These parameters are not editable.





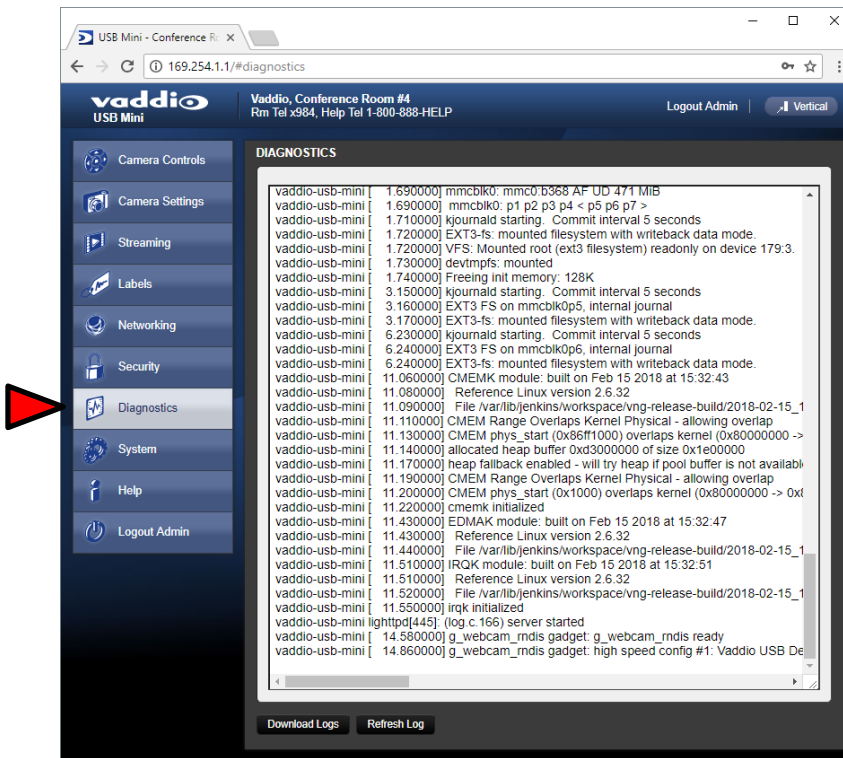
### QMini Screen Shot: Admin Menu - Security

The Security menu allows the Admin to **UPDATE “user” PASSWORD** and **UPDATE “admin” PASSWORD**. The default “user” password is: **password**. The default “admin” password is also: **password**. The Network administrator can reassign the user name and password as well as the admin password. There is only one “user” password and one “admin” password at any given time. If changes are made, click on Save to store the change.



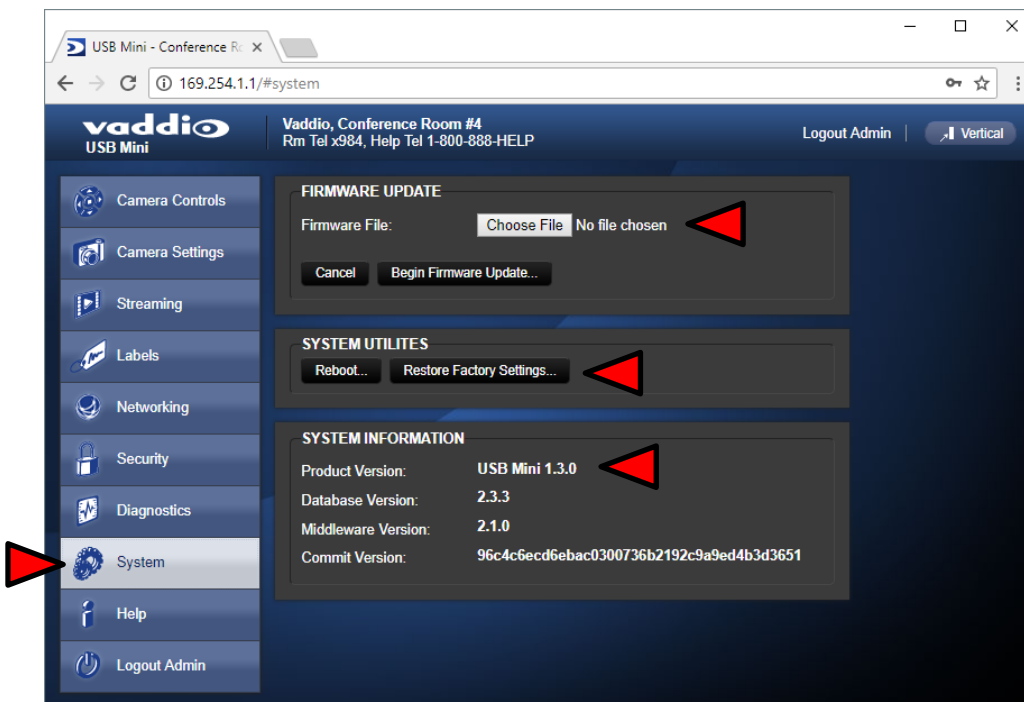
### QMini Screen Shot: Admin Menu - Diagnostics

Diagnostics menu button will display the diagnostic log. This may help the Vaddio technical support team diagnose issues with the USB Mini and the attached camera.



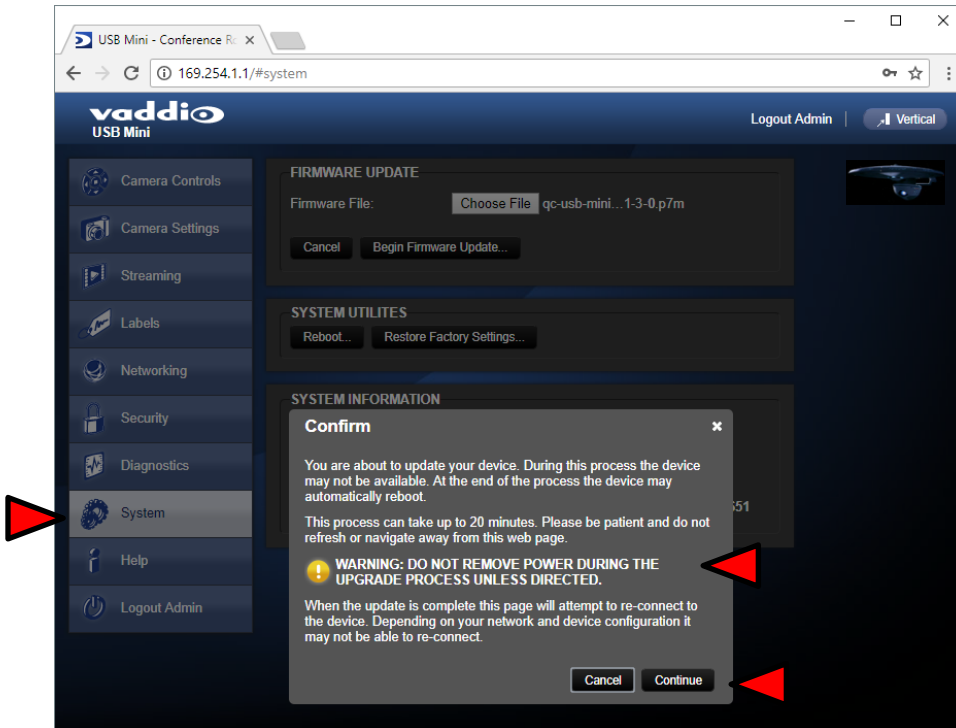
### QMini Screen Shot: Admin Menu - System Menu

The System Menu is where the Firmware Updates are performed. There will be firmware updates and upgrades over the life of the Quick-Connect. The file for the firmware update is chosen in this menu and the update is started here too.



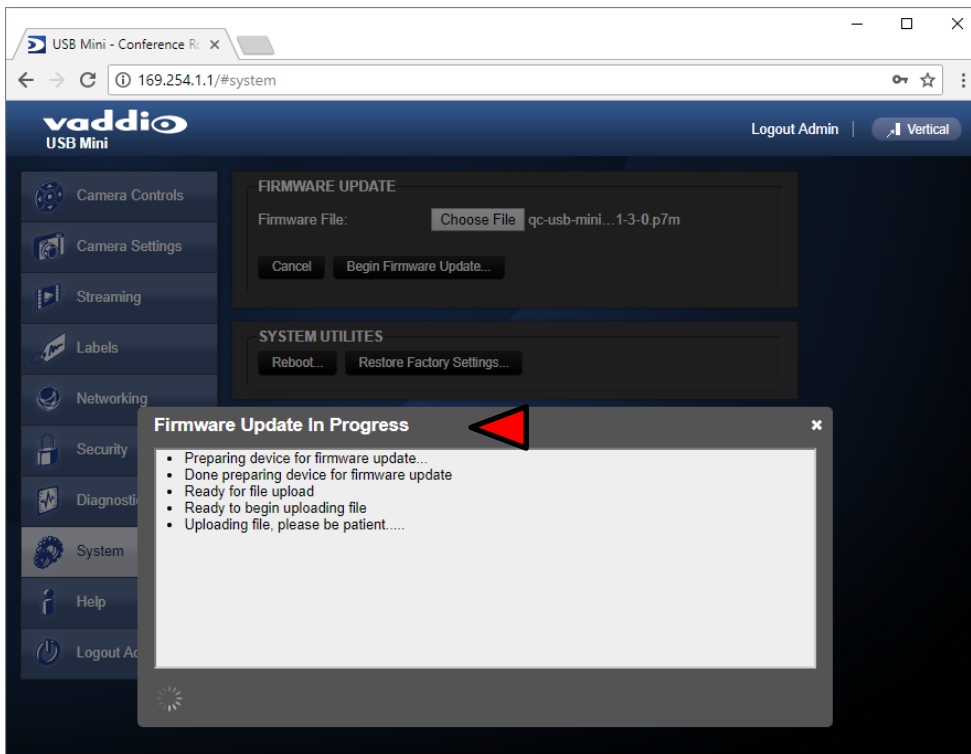
### QMini Screen Shot: Admin Menu - Update Confirmation

After clicking on “Begin Firmware Update...” a confirmation pop-up and warning will be displayed. Please contact Vaddio Technical Support for assistance with updates if required. Please read and completely understand the pop-up warnings as it is easy to lose patience waiting for updates. Click on continue to start the update.



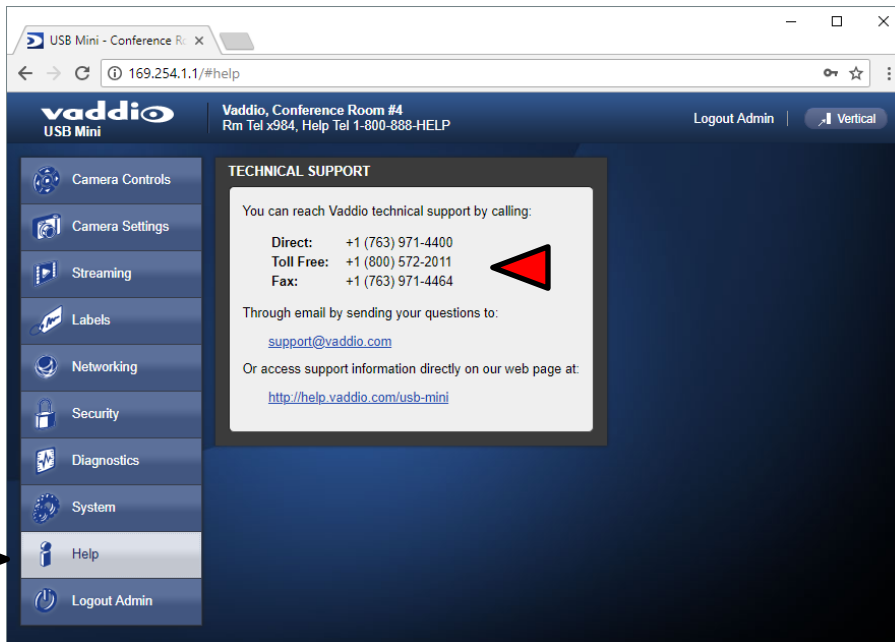
### QMini Screen Shot: Admin Menu - Update in Progress

After the firmware load has been started, a pop-up screen will advise patience and notify, in terms of a percentage completed, the progress of the firmware update load. Again, please don't interrupt the firmware load.



### QMini Screen Shot: Admin Menu - Help

Service/Help information can be found under the Help menu. Support phone numbers and e-mail, manuals, FAQ's and System information is listed on this page. Have this page open when calling Vaddio Tech Support.



#### TECHNICAL SUPPORT NOTE:

**Please work with your Network Administrator prior to calling Vaddio for technical support. Please have on-site network personnel initiate tech support calls with Vaddio only.**

## CONNECTING THE ZOOMSHOT 30 TO THE PC AND PROGRAM OF CHOICE

The Quick-Connect USB or Quick-Connect USB Mini and attached camera are compatible with many programs and media players.

### Skype Example

- 1) After connecting a camera to the Quick-Connect USB or Quick-Connect USB Mini, with a quality USB 2.0 cable, plug the USB-B port of the Quick-Connect Interface to the USB-A port of the computer. A pop up window on the computer monitor will display a message similar to one of these:
  - a. Found Mini USB
  - b. Found QC-USB
  - c. Found USB Composite Device
  - d. Found USB Video Device
- 2) Open Skype and perform the following steps:
  - a. Open the Tools Menu and drop down to Options
  - b. Click on Video Settings and under Webcam choose USB Video Device or Friendly Name if it has been assigned

The systems will negotiate the highest resolutions possible, depending on the computer speed, network quality, cabling etc..., and display the video signal of the camera. The camera is best controlled with the supplied Vaddio IR SHOT Commander or through IP over USB as described earlier through the Quick-Connect device's web interface. Make a test call to ensure the system is working properly.

### VLC Media Player Example

- 1) Same first step as above.
- 2) Open VLC Media Player and perform the following steps:
  - a. Click on the Media menu, drop down to Open Capture Device and click it.
  - b. Under Device Name, go to the Video Device Name drop down and choose USB Video Device.
  - c. Under Options, enter the Video Size as 1280x720
  - d. Click on Play
  - e. From there, VLC needs some instruction on the aspect ratio, so click on Tools and drop down to Aspect Ratio and drop down again to 16:9 for 720p (1280x720).



VLC is a powerful record/playback system that will buffer the images creating some delay in the way VLC displays the image. This is expected and normal.

With all the compatible software available, in general terms, the video device, aspect ratio, and resolution may need to be set manually the first time through initial set-up. Some systems are easier than others (like Skype) and others are more technical in nature and tend to do more stuff.

**Example Program Notes:** Most every application or media player is in a state of constant updating and change. The above instructions were first written for the Quick-Connect USB Mini at the beginning of 2013 and some steps may be slightly different. The general idea however is the same.

## GENERAL SPECIFICATIONS

<b>Part Numbers</b>	ZoomSHOT 30 QUSB System 999-6930-100 (North America) ZoomSHOT 30 QUSB System 999-6930-101 (Europe/UK) ZoomSHOT 30 QMini System 999-6930-400 (North America) ZoomSHOT 30 QDVI System 999-6930-200 (North America) ZoomSHOT 30 QDVI System 999-6930-201 (Europe/UK) ZoomSHOT 30 AVBMP 999-6930-000 (Worldwide)
<b>ZoomSHOT 30 Camera</b>	
<b>Image Sensor</b>	1/2.8 Exmor CMOS 2.14 Megapixel (2.38 Total MP)
<b>Video Output Resolutions</b>	HD: 1080/60/59.94/50/30/25, 1080i/60/59.94/50, 720p/60/59.94/50
<b>Lens/ Focus</b>	30x Optical Zoom / Auto and Manual focus options
<b>Horizontal Viewing Angle</b>	63.0° Wide End to 3.47° Tele End
<b>Video S/N Ratio</b>	>50 dB
<b>Minimum Illumination</b>	0.4 Lux (F1.4)
<b>Serial Control Protocol</b>	RS-232 Serial Control
<b>Manual Pan/Tilt Range</b>	Pan: Limited to service loop of cabling, yoke and base are mechanical only Tilt: ± 30° Invertible for Ceiling Mount
<b>Preset Positions</b>	12
<b>Tally Light</b>	Red LED available through RS-232 Control
<b>Camera Connectors</b>	Two (2) RJ-45 Jacks: EZ-Power VIDEO RJ-45 Jack for use with Quick-Connect - Supplies power to the camera and returns differential HD video from the camera RS-232 RJ-45 Jack (Serial Communication)
<b>HD Video Select</b>	16-Position Rotary Switch: Used to set HD Video Resolution Output
<b>Camera Settings</b>	6-Position Dip Switch: For IR Freq., Image Flip, Firmware Update Mode & Factory Reset 16-Position Rotary Switch for Output Resolution Settings
<b>Thin Profile Wall Mount</b>	535-2000-237 (included) Black powder coating, sized to fit on 1-gang wall box or with supplied drywall fasteners
<b>User Controls</b>	IR SHOT Commander and RS-232 for control; on-screen display (OSD) for configuration
<b>Materials &amp; Weight</b>	Aluminum & Steel, Weight = 2.75 lbs. (1.25kg)
<b>Dimensions:</b>	Tube: 3" ( 76.2mm) Diameter x 4.75" (120.65mm) Long Base: 5.5" (139.7mm) Diameter Overall Height: 5.5" (139.7mm) Tall
<b>Quick-Connect USB (QUSB) Interface</b>	
<b>Video Outputs</b>	USB 2.0 (MJPEG): Resolution up to 720p/30 (USB 2.0 MJPEG) H.264 (IP) of Ethernet: Resolution up to 1080p/30 (H.264 over IP) Analog Component (YPbPr): Resolution up to 1080p/59.94 HDMI: Resolution up to 1080p/59.94
<b>USB Interface</b>	Connector: Type-B, USB 2.0 Compliant, Standard UVC (Universal Video Class) Drivers
<b>Network Interface</b>	Connector: RJ-45 (shielded), 10/100 Base-T, Supported Protocols: RTSP and HLS Streaming
<b>Streaming Protocols</b>	IP: H.264 (RTSP and HLS), USB 2.0: MJPEG (UVC standard drivers)
<b>Connectors</b>	Power: 5.5mm OD x 2.5mm ID Coaxial Connector YPbPr: DE-15 (15-pinHD) Female HDMI: HDMI Female RS-232 IN: RJ-45 Jack RS-232 OUT: RJ-45 Jack EZ-Power Video: RJ-45 Jack (Power and Differential HD Video)
<b>Dip Switches</b>	5-Position: Color Space, Updating and Future Use
<b>H.264 Resolutions</b>	CIF, 640x480 (VGA), 480p, 720p/30 1080p/30 (1080p Ethernet only)
<b>Front Panel</b>	20 x 2 line Character Negative Mode LCD - Displays MAC (HW for Hardware) and IP Address Power/System Reset - Tactile, flush mount, Back-lit Switch Network LED: Indicates connectivity and activity USB LED: Indicates Streaming Mode
<b>Supported Media Players</b>	Quick-Time Media Play - Win 7 & Mac OS10X VLC Media Player - Win 7 & Mac OS10X Real Player - Win 7

<b>Supported Browsers</b>	Internet Explorer, Safari, Safari/iOS, Chrome & Firefox
<b>Power Supply</b>	24 VDC, 2.0 Amp
<b>Dimensions (H x W x D)</b>	½-Rack Size - 8.375" ( 212.73mm) W x 6.0" (152.4mm) x 1.72" ( 43.6885643mm) H
<b>Weight</b>	1.4 lbs. (0.6355643Kg)
<b>Accessory</b>	Rack Mount Adapter: 998-6000-004 - 1-RU Offset mount (1-Long Ear & 1-Short Ear)
<b>Operating Temperatures</b>	0°C to 40°C / 20% to 80% Relative Humidity
<b>Quick-Connect USB Mini (QMini) Interface</b>	
<b>Video Outputs</b>	USB 2.0 (MJPEG): Resolution up to 720p/30 (Limits of USB 2.0 with MJPEG Compression)
<b>USB Interface</b>	Connector: Type-B, USB 2.0 Compliant, Standard UVC (Universal Video Class) Drivers
<b>Network Interface</b>	Ethernet over USB 2.0 only
<b>Streaming Protocols</b>	USB 2.0, MJPEG (UVC standard drivers)
<b>Connectors</b>	Power: 5.5mm OD x 2.5mm ID Coaxial Connector RS-232 Port: Shielded RJ-45 Jack EZ-Power Video Port: Shielded RJ-45 Jack (Power and Differential HD Video)
<b>Supported Media Players</b>	Quick-Time Media Play - Win 7, Win 8.1, Win 10 & Mac OS10X VLC Media Player - Win 7, Win 8.1, Win 10 & Mac OS10X Real Player - Win 7, Win 8.1, Win 10
<b>Supported Browsers</b>	Microsoft® Internet Explorer® Safari Chrome Firefox
<b>Power Supply</b>	24 VDC, 2.08 Amp
<b>Dimensions (H x W x D)</b>	3.60" (91.4mm) H x 4.48" (113.8mm) W x 1.25" (31.75mm) D
<b>Weight</b>	1.1 lbs. (0.5Kg)
<b>Accessories</b>	6' (1.83m) USB 2.0 Type-A Male to USB Type-B Male cable (included), 24 VDC, 2.08 Amp Switching Power Supply with AC Cord Set (included) Two (2) Cat-5 cables (not included - unknown length requirement)
<b>Operating Temperatures</b>	0°C to 40°C / 20% to 80% Relative Humidity
<b>Quick-Connect USB DVI/HDMI-SR (QDVI) Interface</b>	
<b>Quick-Connect System</b>	Quick-Connect DVI/HDMI-SR Interface (two Cat-5e) for distances up to 150' (45.72m) HDMI or DVI-D and Analog Component YPbPr output with IR forwarding
<b>Connectors</b>	<ul style="list-style-type: none"> <li>• Power Connector: 5.5mm OD, 2.5mm ID coaxial connector</li> <li>• RJ-45: Four (4) Control IN, Control OUT, Daisy Chain OUT, EZCamera Power Video Port</li> <li>• Video Output: DE-15 connector for HD Analog Component (Y,PB,PR) video only (No SD Support)</li> <li>• IR Output: Transmits modulated or non-modulated IR signals received from the HD-20 IR receiver</li> </ul> Video Outputs: DVI-D (Female - Single Link) or HDMI with adapter cable (using the Recessed Color Space Conversion Switch) , DE-15F (High Density D-Sub 15-Pin F) for HD YPbPr
<b>Cat-5 Cable Distance</b>	Up to 150' (45.72m)
<b>Power Supply</b>	24 VDC, 2.0 Amp Switching Power Supply with AC Cord Set
<b>Dimensions</b>	½-Rack Size, 1.6" (40.64mm ) H x 8" (203.2mm) W x 6.751" (171.45mm) D,
<b>Weight</b>	1.21 lbs. (0.5488468kg)
<b>Accessory Options</b>	1-RU Rack Mount Panel for two (2) units (side by side): P/N: 998-6000-003
<b>Operating Temperatures</b>	0°C to 40°C / 20% to 80% Relative Humidity

Dwarf Planet in Front Page Header: Pluto



## OTHER GENERAL INFORMATION

### Care and Cleaning

Do not attempt to take this product apart at any time. There are no user-serviceable components inside.

- Do not spill liquids in the product
- Keep this device away from food and liquid
- For smears or smudges on the product, wipe with a clean, soft cloth
- Use a lens cleaner on the lens, OK?
- Do not use any abrasive chemicals

### Operating and Storage Conditions:

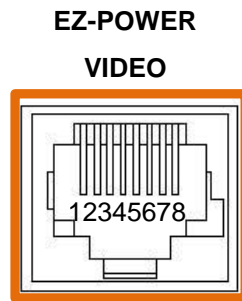
Do not store or operate the device under the following conditions:

- Temperatures above 40°C (104°F) or temperatures below 0°C (32°F)
- High humidity, condensing or wet environments
- In inclement weather
- In swimming pools or wishing wells
- Dry environments with an excess of static discharge
- In orbit (operating temperature and re-entry issues)
- Under severe vibration
- Buried in the ground, enveloped in dirt

## CONNECTOR PIN-OUTS

### Camera EZ-POWER VIDEO RJ-45 Connector Pin-out

Pin	Signal
Pin - 1	Power+
Pin - 2	Power-
Pin - 3	Y+
Pin - 4	PB+
Pin - 5	PB -
Pin - 6	Y -
Pin - 7	PR+
Pin - 8	PR-



Color-Coded Orange

#### Differential Video Signals

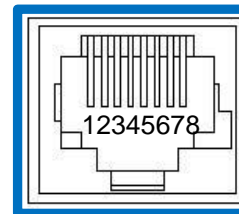


**Important Note:** The EZ-POWER VIDEO RJ-45 connector on the ZoomSHOT 30 camera is for use with the **Quick-Connect USB, Quick-Connect USB Mini, Quick-Connect DVI/HDMI and AV Bridge MATRIX PRO Interfaces ONLY** (568B Wiring Standard). The video signals are differential (HSDS) and can only be processed by these interfaces.

### Camera RS-232 RJ-45 Connector Pin-out

Pin	Camera Pins
Pin - 1	N/A
Pin - 2	N/A
Pin - 3	N/A
Pin - 4	IR Output - Not Used with QUSB, QMini, or AVBMP
Pin - 5	IR GND - Not Used with QUSB, QMini, or AVBMP
Pin - 6	Digital GND
Pin - 7	RXD (from TXD of control source) ←
Pin - 8	TXD (to RXD of control source) →

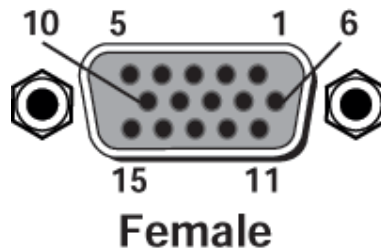
#### RS-232



Color-Coded Blue

### Quick-Connect USB and Quick-Connect DVI/HDMI: DE-15 Connector Pin-out (Analog Component YPbPr)

Pin	YPbPr
1	Pr
2	Y
3	Pb
4	-
5	-
6	Pr GND
7	Y GND
8	Pb GND
9	-
10	GND
11	-
12	-
13	-
14	-
15	-



## SERIAL COMMUNICATION SPECIFICATION FOR THE ZOOMSHOT 30

Communication Speed: 9600 bps (default)

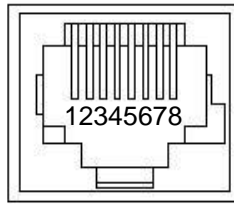
Start bit: 1

Stop bit: 1

Data bits: 8

Parity: None

No Flow Control



Pin #	RJ-45 RS-232 and IR Out Pins
1)	Unused
2)	Unused
3)	Unused
4)	Unused
5)	Unused
6)	GND
7)	RXD (from TXD of control source)
8)	TXD (to RXD of control source)

**NOTE:** The Vaddio ZoomSHOT 30 Control Protocol is similar, but not identical to, the Sony® VISCA™ command set in order to be compatible with several popular control devices. Not all VISCA commands are supported and there are many HD-Series specific commands in the following Command and Inquiry Lists.

### ZoomSHOT 30 Command List (1/2)

Command Set	Command	Command Packet	Comments
Address Set	Broadcast	88 30 01 FF	Address Set (Daisy chain)
IF_Clear	Broadcast	88 01 00 01 FF	IF Clear
Command Cancel		8x 2p FF	p:socket number(1,2)
CAM_Power	On Off(Standby)	8x 01 04 00 02 FF 8x 01 04 00 03 FF	Power On/Off
CAM_Zoom	Stop Tele(Standard) Wide(Standard) Tele(Variable) Wide(Variable) Direct Direct(Variable)	8x 01 04 07 00 FF 8x 01 04 07 02 FF 8x 01 04 07 03 FF 8x 01 04 07 2p FF 8x 01 04 07 3p FF 8x 01 04 47 0p 0q 0r 0s FF 8x 01 7E 01 4A 0v 0p 0q 0r 0s FF	pqrs: Zoom Position* v:(Speed) 0-7
CAM_Focus	Stop Far(Standard) Near(Standard) Far(Variable) Near(Variable) AutoFocus ManualFocus Auto/Manual Direct	8x 01 04 08 00 FF 8x 01 04 08 02 FF 8x 01 04 08 03 FF 8x 01 04 08 2p FF 8x 01 04 08 3p FF 8x 01 04 38 02 FF 8x 01 04 38 03 FF 8x 01 04 38 10 FF 8x 01 04 48 0p 0q 0r 0s FF	pqrs: Focus position*
CAM_WB	Auto Manual Indoor Outdoor One Push WB	8x 01 04 35 00 FF 8x 01 04 35 05 FF 8x 01 04 35 01 FF 8x 01 04 35 02 FF 8x 01 04 35 03 FF	
CAM_RGain	Reset Up Down Direct	8x 01 04 03 00 FF 8x 01 04 03 02 FF 8x 01 04 03 03 FF 8x 01 04 43 0p 0q 0r 0s FF	pqrs:00-0xffff
CAM_BGain	Reset Up Down Direct	8x 01 04 04 00 FF 8x 01 04 04 02 FF 8x 01 04 04 03 FF 8x 01 04 44 43 0p 0q 0r 0s FF	pqrs:00-0xffff
CAM_AE	Full Auto Manual Shutter Priority Iris Priority	8x 01 04 39 00 FF 8x 01 04 39 03 FF 8x 01 04 39 0A FF 8x 01 04 39 0B FF	Auto Exposure Mode Manual Control Mode Shutter Priority Mode Exposure Priority Mode (default)
CAM_Iris	Reset Up Down Direct	8x 01 04 0B 00 FF 8x 01 04 0B 02 FF 8x 01 04 0B 03 FF 8x 01 04 4B 00 00 0p 0q FF	pq(0x00-0x08)
CAM_Gain	Reset Up Down Direct	8x 01 04 0C 00 FF 8x 01 04 0C 02 FF 8x 01 04 0C 03 FF 8x 01 04 4C 00 00 0p 0q FF	pq(0x00-0x2A)
CAM_Bright	Reset Up Down Direct	8x 01 04 0D 00 FF 8x 01 04 0D 02 FF 8x 01 04 0D 03 FF 8x 01 04 4D 00 00 0p 0q FF	pq(0x01-0x64)

### ZoomSHOT 30 Command List (2/2)

Command Set	Command	Command Packet	Comments
CAM_Backlight	On	8x 01 04 33 02 FF	
	Off	8x 01 04 33 03 FF	
CAM_Aperture	Reset	8x 01 04 02 00 FF	
	Up	8x 01 04 02 02 FF	
	Down	8x 01 04 02 03 FF	
	Direct	8x 01 04 42 00 00 0p 0q FF	pq(0x00-0x1F)
CAM_Memory	Reset	8x 01 04 3F 00 0p FF	
	Set	8x 01 04 3F 01 0p FF	
	Recall	8x01 04 3F 02 0p FF	p:Memory No(=0-0xF)
CAM_IDWrite		8x 01 04 22 0p 0q 0r 0s FF	pqrs:0x0000 – 0xFFFF
CAM_LR_Reverse On	On	8x 01 04 61 02 FF	Mirror (Horizontal) on
	Off	8x 01 04 61 03 FF	Mirror (Horizontal) off
IR_Receive##	On	8x 01 06 08 02 FF	
	Off	8x 01 06 08 03 FF	
	On/Off	8x 01 06 08 10 FF	IR forwarding/Local IR
Tally	On	8x 01 7E 01 0A 00 02 FF	
	Off	8x 01 7E 01 0A 00 03 FF	
BLK.Enhance	Pedestal	No Support	No Support
GMA.Enhance	Gamma	8x 01 7E 54 00 00 0p 0q FF	pq: Gamma (0x00-0x10)
CRM.Enhance	Chroma	8x 01 7E 55 00 00 0p 0q FF	pq: Chroma (0x00-0x64)
KNE.Enhance	Knee	No Support	No Support
DIS.Enhance	Digital Image Stabilizer	8x 01 7E 57 02 FF	On
		8x 01 7E 57 03 FF	Off
SNR.Enhance	Super Noise Reduction	8x 01 7E 58 02 FF	On
		8x 01 7E 58 03 FF	Off
AGC.Enhance	AGC Mode	8x 01 7E 59 00 FF	Off
		8x 01 7E 59 01 FF	Low
		8x 01 7E 59 02 FF	Medium
		8x 01 7E 59 03 FF	High
CAM_Shutter	Reset	8x 01 04 0A 00 FF	
	Up	8x 01 04 0A 02 FF	
	Down	8x 01 04 0A 03 FF	
	Direct	8x 01 04 4A 00 00 0p 0q FF	pq(0x00-0x1C)
CAM_ExpComp	On	8x 01 04 3E 02 FF	AutoExposure Off
	Off	8x 01 04 3E 03 FF	AutoExposure On
	Reset	8x 01 04 0E 00 FF	
	Up	8x 01 04 0E 02 FF	
	Down	8x 01 04 0E 03 FF	
	Direct	8x 01 04 4E 00 00 0p 0q FF	Pq: 0x00-0x2A
CAM_ICR Cut Filter	ICR On	8x 01 04 01 02 FF	ICR On - Cut Filter Out
	ICR Off	8x 01 04 01 03 FF	ICR Off - Cut Filter In

**\*Zoom and Focus Data:**

CAM\_Zoom: Range(0x000–0x075f)

CAM\_Focus: Range (0x0ce-0x09a1) dependent on Zoom Position

### ZoomSHOT 30 Inquiry List (1/1)

Inquiry Command	Command	Response Packet	Comments
CAM_PowerInq	8x 09 04 00 FF	y0 50 02 FF y0 50 03 FF	On Off(Standby)
CAM_ZoomPosInq	8x 09 04 47 FF	y0 50 0p 0q 0r 0s FF	pqr: 0-0x071A
CAM_FocusPosInq	8x 09 04 48 FF	y0 50 0p 0q 0r 0s FF	pqrs: Focus Position
CAM_WBModelInq	8x 09 04 35 FF	y0 50 00 FF y0 50 05 FF y0 50 01 FF y0 50 02 FF y0 50 03 FF	Auto Manual Indoor Outdoor One Push WB
CAM_RGain	8x 09 04 43 FF	y0 50 0p 0q 0r 0s FF	pqrs: 000-0xffff
CAM_BGain	8x 09 04 44 FF	y0 50 0p 0q 0r 0s FF	pqrs: 000-0xffff
CAM_Iris	8x 09 04 4B FF	y0 50 00 00 0p 0q FF	pq(0x00-0x08)
CAM_Gain	8x 09 04 4C FF	y0 50 00 00 0p 0q FF	pq(0x00-0x2A)
CAM_Bright	8x 01 04 4D FF	y0 50 00 00 0p 0q FF	pq(0x01-0x64)
CAM_BacklightModelInq	8x 09 04 33 FF	y0 50 02 FF y0 50 03 FF	On Off
CAM_ApertureInq	8x 09 04 42 FF	y0 50 00 00 0p 0q FF	Pq:x00-0x1F
CAM_MemoryInq	8x 09 04 3F FF	y0 50 0p FF	p:Preset 0-0xf
CAM_IDInq	8x 09 04 3F FF	y0 50 0p 0q 0r 0s FF	pqrs:0x0000 – 0xFFFF
CAM_ReceiveInq	8x 09 06 08 FF	y0 50 02 FF y0 50 03 FF	On Off
CAM_LR_Reverse	8x 09 04 61 FF	y0 50 02 FF y0 50 03 FF	On Off
TallyInq	8x 09 7E 01 0A FF	y0 50 02 FF y0 50 03 FF	On Off
BLK.Enhance	No support	No Support	Pedestal
GMA.Enhance	8x 09 7E 54 FF	y0 50 00 00 0p 0q FF	pq: Gamma (0x00-0x10)
CRM.Enhance	8x 09 7E 55 FF	y0 50 00 00 0p 0q FF	pq: Chroma (0x00-0x64)
KNE.Enhance	No support	No Support	Knee
DIS.Enhance	8x 09 7E 57 FF	y0 50 02 FF y0 50 03 FF	On Off
SNR.Enhance	8x 09 7E 58 FF	y0 50 02 FF y0 50 03 FF	On Off
AGC.Enhance	8x 09 7e 59 FF	y0 50 00 FF y0 50 01 FF y0 50 02 FF y0 50 03 FF y0 50 04 FF	Off Low Medium High Manual AGC
CAM_AEModelInq	8x 09 04 39 FF	y0 50 00 FF y0 50 03 FF y0 50 0A FF y0 50 0B FF	Auto Exposure Mode Manual Control Mode Shutter Priority Mode Exposure Priority Mode
CAM_ShutterPosInq	8x 09 04 4A FF	y0 50 00 00 0p 0q FF	pq: 0x0-0x1C
CAM_ExpCompModelInq	8x 09 04 3E FF	y0 50 02 FF y0 50 03 FF	On - AE Mode Off Off – AE Mode On
CAM_ExpCompPosInq	8x 09 04 4E FF	y0 50 00 00 0p 0q FF	pq: ExpComp Pos
CAM_ICRModelInq	8x 09 04 01 FF	y0 50 02 FF y0 50 03 FF	On - ICR filter Out Off – ICR filter In

## QUSB TELNET COMMAND API

The Vaddio Serial Command protocol is a high level text based command line interface supported via telnet session on the Quick-Connect USB.

*Note: The Telnet command API is not available on the Quick-Connect USB Mini.*

Camera control commands supported on the Quick-Connect USB includes ClearVIEW HD-18, HD-19 and HD-20, PowerVIEW HD-22, HD-30, RoboSHOT 12, RoboSHOT 12E RoboSHOT 30, RoboSHOT 30E, ZoomSHOT, ZoomSHOT 20, ZoomSHOT 30, WideSHOT and WideSHOT SE. The command application protocol interface is intended to allow external device such as AMX or Crestron to control the camera. The protocol is based upon ASCII format following the VT100 terminal emulation standard and uses an intuitive text command nomenclature for ease of use. The API is accessed by a telnet client on the Ethernet port. All ASCII characters will be **echoed** to terminal program and appended with VT100 string **-ESC[J** (HEX- 1B 5B 4A). Vaddio Command lines are terminated on carriage return. After the carriage return, the VT100 appends with **-ESC[J**. **Note: Most terminal programs automatically strip the VT100 string.** General format usage follows a **get/set** structure. Usage examples for each type are:

### Set Example

COMMAND: > camera pan right  
RESPONSE: > OK

### Get Example

COMMAND: > stream mode get  
RESPONSE: > streaming mode usb

### Syntax Error Example

COMMAND: > camera pan right  
RESPONSE: > ERROR

Additional programming controls associated with the terminal protocol includes:

- **CTRL 5** - Clears the current serial buffer on the device.

Telnet sessions will require access verification and uses the same username and password associated with the Administrator account on the embedded web interface. The default Telnet Port is 23. Command lines are terminated with a carriage return. **NOTE:** The ZoomSHOT 30 camera will not respond to pan or tilt commands.

## Telnet Command List

### Camera Home

#### NAME

**camera home** - Move the camera to the home position

#### SYNOPSIS

**camera** *home*

#### DESCRIPTION

Method used to move the **camera** to the *home* position

#### EXAMPLES

**camera** *home*

Move the **camera** back to the *home* position

## Camera Preset

### NAME

**camera preset** - Recall and storing of camera presets

### SYNOPSIS

**camera preset** {recall|store} [1-12]

### DESCRIPTION

Method used to recall and store **camera** presets

### OPTIONS

**recall** Recall *preset*

**store** Store *preset*

*preset* Required value from 1-12 used to indicate the *preset* number

### EXAMPLES

**camera recall** 3

Move **camera** to *preset* position 3

**camera store** 1

Store current **camera** position as *preset* 1

## Network Ping

### NAME

**network ping** - send ICMP ECHO\_REQUEST to network hosts

### SYNOPSIS

**network ping** [*count* <*count*>] [*size* <*size*>] <*destination-ip*>

### DESCRIPTION

Use the ICMP protocol's mandatory ECHO\_REQUEST datagram to elicit an ICMP ECHO\_RESPONSE from a host or gateway. ECHO\_REQUEST datagrams have an IP and ICMP header, followed by a struct timeval and then an arbitrary number of pad bytes used to fill out the packet.

### OPTIONS

*count* Stop after sending *count* ECHO\_REQUEST packets. With deadline option, *ping* waits for *count* ECHO\_REPLY packets, until the timeout expires. The default is 5.

*destination* The destination IP address where the ECHO\_REQUESTS are sent

*size* The data *size* of the ICMP packet to send. The default is 56 bytes

### EXAMPLES

**network ping** 192.168.1.1

Attempt to send 5 ICMP ECHO\_REQUESTs with data *size* 56 to the host at 192.168.1.1

**network ping** *count* 10 *size* 100 192.168.1.1

Attempt to send 10 ICMP ECHO\_REQUESTs with data *size* of 100 to the host at 192.168.1.1

## Network Settings

### NAME

**network settings** - get current network settings

### SYNOPSIS

**network settings** {get}

### DESCRIPTION

Method used to get the current **network settings** of the device

### OPTIONS

**get** Get the current **network settings** for the machine

### EXAMPLES

**network settings** get

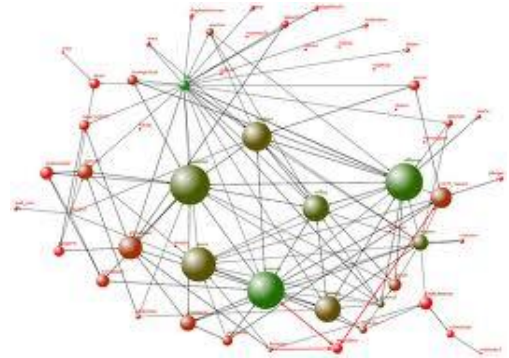
**MAC Address:** 00:04:a3:85:0a:ee

**IP Address:** 10.10.8.116

**Netmask:** 255.255.255.0

**Gateway:** 10.10.8.100

Returns the current **network settings** for mac address, ip address, netmask, and gateway



## Streaming Mode

### NAME

**streaming mode** - Gets or sets the current streaming mode

### SYNOPSIS

**streaming mode** {get|usb|ethernet}

### DESCRIPTION

Method used to get or set the current **streaming settings**

### OPTIONS

**get** Get the current **streaming mode**

**usb** Set the current **streaming mode** to USB

**ethernet** Set the current **streaming mode** to Ethernet

### EXAMPLES

**streaming mode** get

*mode: usb*

Returns the current **streaming mode**

**streaming mode** usb

----

**streaming mode** ethernet

### OK

Sets the **streaming mode** to Ethernet



## Streaming Quality

### NAME

**streaming quality** - Gets or sets the current streaming quality

### SYNOPSIS

**streaming quality** {get|low|standard|high}

### DESCRIPTION

Method used to get or set the current **streaming quality**

### OPTIONS

**get** Get the current **streaming quality**  
**low** Set video *quality* to low  
**standard** Set video *quality* to standard  
**high** Set video *quality* to high

### EXAMPLES

**streaming quality** get

*quality:low*

Returns the current **streaming quality**

----

**streaming quality** standard

OK

Sets the **streaming quality** to standard

## Streaming Resolution

### NAME

**streaming resolution** - Gets or sets the current streaming quality

### SYNOPSIS

**streaming resolution** {get|1080p|720p|4cif|480p|cif}

### DESCRIPTION

Method used to get or set the current **streaming resolution**

### OPTIONS

**get** Get the current **streaming resolution**  
**1080p** Set video *resolution* to 1080p  
**720p** Set video *resolution* to 720p  
**4cif** Set video *resolution* to 4cif  
**480p** Set video *resolution* to 480p  
**cif** Set video *resolution* to cif

### EXAMPLES

**streaming resolution** get

*resolution:720p*

Returns the current **streaming resolution**

----

**streaming resolution** 720p

OK

Sets the **streaming resolution** to 720p



## System Factory-Reset

### NAME

**system factory-reset** - Gets or sets factory reset status

### SYNOPSIS

system factory-reset {get|on|off}

### DESCRIPTION

Method used to get or set the factory reset status

### OPTIONS

get Get the current factory reset status

on Enable factory reset on reboot

off Disable factory reset on reboot

### EXAMPLES

system factory-reset get

factory-reset (software):

off

factory-reset (hardware): [Hardware reset is designated by rear panel dip switches in down position]

off

Returns the factory reset status

----

system factory-reset on

factory-reset (software): on

factory-reset (hardware): off

Enables factory reset upon reboot



## System Reboot

### NAME

**system reboot** - Reboots system

### SYNOPSIS

system reboot [<seconds>]

### DESCRIPTION

Method used to reboot system

### OPTIONS

seconds

The number of seconds to delay the reboot

### EXAMPLES

reboot

Reboot system immediately

reboot 30

Reboot the system in 30 seconds

## Version

### NAME

**version** - display the system version information

### SYNOPSIS

**version**

### DESCRIPTION

Display an overview of the command line syntax

### EXAMPLES

#### Version

Returns the current software **version**

## Help

### NAME

**help** - display an overview of the CLI syntax

### SYNOPSIS

**help**

### DESCRIPTION

Display an overview of the command line syntax

## History

### NAME

**history** - command history

### SYNOPSIS

**history** [*limit*]

### DESCRIPTION

Since many of the programs read user input a line at a time, the command **history** is used to keep track of these lines and also recall historic information

### HISTORY NAVIGATION

The command **history** can be navigated using the up and down arrow keys. The up arrow will move up a single entry in the command **history** while the down arrow moves down in the command **history**.

### HISTORY EXPANSION

The command **history** supports the expansion functionality from which previous commands can be recalled from within a single session. History expansion is performed immediately after a complete line is read.

Listed below are examples of **history** expansion:

!! Substitute the last command line.

!N Substitute the Nth command line (absolute as per '**history**' command)

!-N Substitute the command line entered N lines before (relative)

### EXAMPLES

#### history

Displays the current command buffer

#### history 5

Sets the **history** command buffer to remember the last 5 unique entries

## Exit

### NAME

**exit** - ends the current API command session

### SYNOPSIS

**exit**

### DESCRIPTION

Exit ends the current API command session. If the session is over telnet, the session is ended and the socket is closed. If the session is over serial, a new session is started.



## COMPLIANCE AND CE DECLARATION OF CONFORMITY FOR ZOOMSHOT 30

Compliance testing was performed to the following regulations:

FCC Part 15 (15.107, 15.109), Subpart B  
 ICES-003, Issue 54: 2012  
 EMC Directive 2014/30/EU  
 EN 55032: 2015  
 EN 55024: November 2010  
 KN24 2008 (CISPR 24: 1997 + A1: 2000 + A2: 2002)  
 IEC 60950-1:2005 (2nd Edition); Am 1: 2009 + Am 2: 2013  
 EN 60950-1: 2006 + A11: 2009 + A1: 2010 + A12: 2011 + A2: 2013

Class A  
 Class A  
 Class A  
 Class A  
 Class A  
 Class A  
 Safety  
 Safety



### FCC Part 15 Compliance

This equipment has been tested and found to comply with the limits for a Class A digital device, pursuant to Part 15, Subpart B, of the FCC Rules. These limits are designed to provide reasonable protection against harmful interference when the equipment is operated in a commercial environment. This equipment generates, uses, and can radiate radio frequency energy and, if not installed and used in accordance with the instruction manual, may cause harmful interference to radio communications. Operation of this equipment in a residential area is likely to cause harmful interference in which case the user will be required to correct the interference at his/her own expense.

Operation is subject to the following two conditions: (1) This device may not cause interference, and (2) This device must accept any interference including interference that may cause undesired operation of the device.

Changes or modifications not expressly approved by Vaddio can affect emission compliance and could void the user's authority to operate this equipment.

### ICES-003 Compliance



This digital apparatus does not exceed the Class A limits for radio noise emissions from digital apparatus set out in the Radio Interference Regulations of the Canadian Department of Communications.

Le présent appareil numérique n'émet pas de bruits radioélectriques dépassant les limites applicables aux appareils numériques de la classe A prescrites dans le Règlement sur le brouillage radioélectrique édicté par le ministère des Communications du Canada.

### European Compliance



This product has been evaluated for Electromagnetic Compatibility under the EMC Directive for Emissions and Immunity and meets the requirements for a Class A digital device. In a domestic environment this product may cause radio interference in which case the user may be required to take adequate measures.

### Standard(s) To Which Conformity Is Declared:

EMC Directive 2014/30/EU  
 EN 55032: 2015  
 EN 55024: November 2010

- EN 61000-4-2: 1995 + Amendments A1: 1998 + A2: 2001
- EN 61000-4-3: 2006 + A1: 2008
- EN 61000-4-4: 2004 + Corrigendum 2006
- EN 61000-4-5: 2006
- EN 61000-4-6: 2009
- EN 61000-4-8: 2010
- EN 61000-4-11: 2004

KN24 2008 (CISPR 24: 1997 + A1: 2000 + A2: 2002)

- EN 61000-4-2
- EN 61000-4-3
- EN 61000-4-4
- EN 61000-4-5
- EN 61000-4-6
- EN 61000-4-8
- EN 61000-4-11

IEC 60950-1:2005 (2nd Edition); Am 1:2009 + Am 2: 2013  
 EN 60950-1:2006+A11:2009+A1:2010+A12:2011 +A2:2013

Class A  
 Immunity  
 Electrostatic Discharge  
 Radiated Immunity  
 Electrical Fast Transients  
 Surge Immunity  
 Conducted Immunity  
 Power Frequency Magnetic Field  
 Voltage Dips, Interrupts and Fluctuations  
 IT Immunity Characteristics  
 Electrostatic Discharge  
 Radiated Immunity  
 Electrical Fast Transients  
 Surge Immunity  
 Conducted Immunity  
 Power Frequency Magnetic Field  
 Voltage Dips, Interrupts and Fluctuations  
 Safety  
 Safety

## COMPLIANCE AND CE DECLARATION OF CONFORMITY, QUICK-CONNECT USB INTERFACE



Compliance testing was performed to the following regulations:

FCC Part 15 (15.107, 15.109), Subpart B  
 ICES-003, Issue 4: 2004  
 EN 55022 A: 2006 + A1: 2007  
 EMC Directive 2004/108/EC  
 EN 55024: A2: 1998 + Amendments A1: 2001 + A2: 2003

Class A  
 Class A  
 Class A  
 Class A  
 Class A



### FCC Part 15 Compliance



This equipment has been tested and found to comply with the limits for a Class A digital device, pursuant to Part 15, Subpart B, of the FCC Rules. These limits are designed to provide reasonable protection against harmful interference when the equipment is operated in a commercial environment. This equipment generates, uses, and can radiate radio frequency energy and, if not installed and used in accordance with the instruction manual, may cause harmful interference to radio communications. Operation of this equipment in a residential area is likely to cause harmful interference in which case the user will be required to correct the interference at his/her own expense.

Operation is subject to the following two conditions: (1) This device may not cause interference, and (2) This device must accept any interference including interference that may cause undesired operation of the device.

Changes or modifications not expressly approved by Vaddio can affect emission compliance and could void the user's authority to operate this equipment.

### ICES-003 Compliance



This digital apparatus does not exceed the Class A limits for radio noise emissions from digital apparatus set out in the Radio Interference Regulations of the Canadian Department of Communications.

Le présent appareil numérique n'émet pas de bruits radioélectriques dépassant les limites applicables aux appareils numériques de la classe A prescrites dans le Règlement sur le brouillage radioélectrique édicté par le ministère des Communications du Canada.

### European Compliance



This product has been evaluated for Electromagnetic Compatibility under the EMC Directive for Emissions and Immunity and meets the requirements for a Class A digital device. In a domestic environment this product may cause radio interference in which case the user may be required to take adequate measures.

### Standard(s) To Which Conformity Is Declared:

EMC Directive 2004/108/EC  
 EN 55032 A: 2006 + A1: 2007(CISPR 22:2005/A1:2005)  
 EN 55024: A2: 2010 + Amendments A1: 2001 + A2: 2003

- EN 61000-4-2: 1995 + Amendments A1: 1998 + A2: 2001
- EN 61000-4-3: 2006 + A1: 2008
- EN 61000-4-4: 2004 + Corrigendum 2006
- EN 61000-4-5: 2006
- EN 61000-4-6: 2009
- EN 61000-4-8: 2010
- EN 61000-4-11: 2004

IEC 60950-1: 2005 2<sup>nd</sup> Edition); AM 1: 2009  
 EN 60950-1: 2006 + A11: 2009 + A1: 2010 + A12:2011

Class A  
 Immunity  
 Electrostatic Discharge  
 Radiated Immunity  
 Electrical Fast Transients  
 Surge Immunity  
 Conducted Immunity  
 Power Frequency Magnetic Field  
 Voltage Dips, Interrupts and Fluctuations  
 Safety  
 Safety

## COMPLIANCE AND CE DECLARATION OF CONFORMITY FOR USB MINI

Compliance testing was performed to the following regulations:

FCC Part15, Sections 15.107, 15.109 Subpart B	Class A
ICES-003 ISSUE 4, 2004	Class A
EN55022 A1 2007	Class A
EMC Directive 2004/108/EC	Class A
EN 55024: A2: 2003	Class A
IEC 60950-1:2005 (2nd Edition); Am 1:2009	Class A
EN 60950-1:2006+A11:2009+A1:2010+A12:2011	Class A



### FCC Part 15 Compliance

This equipment has been tested and found to comply with the limits for a Class A digital device, pursuant to Part 15, Subpart B, of the FCC Rules. These limits are designed to provide reasonable protection against harmful interference when the equipment is operated in a commercial environment. This equipment generates, uses, and can radiate radio frequency energy and, if not installed and used in accordance with the instruction manual, may cause harmful interference to radio communications. Operation of this equipment in a residential area is likely to cause harmful interference in which case the user will be required to correct the interference at his/her own expense.

- Operation is subject to the following two conditions: (1) This device may not cause interference, and (2) This device must accept any interference including interference that may cause undesired operation of the device.
- Changes or modifications not expressly approved by Vaddio can affect emission compliance and could void the user's authority to operate this equipment.

### ICES-003 Compliance

#### ICES-003, Issue 4: 2004

This digital apparatus does not exceed the Class A limits for radio noise emissions from digital apparatus set out in the Radio Interference Regulations of the Canadian Department of Communications.

Le présent appareil numérique n'émet pas de bruits radioélectriques dépassant les limites applicables aux appareils numériques de la classe B prescrites dans le Règlement sur le brouillage radioélectrique édicté par le ministère des Communications du Canada.



### European Compliance

This product has been evaluated for Electromagnetic Compatibility under the EMC Directive for Emissions and Immunity and meets the requirements for a Class A digital device. In a domestic environment this product may cause radio interference in which case the user may be required to take adequate measures.

#### Standard(s) To Which Conformity Is Declared:

EMC Directive 2004/108/EC	
EN 55022 A: 2006 + A1: 2007(CISPR 22:2005/A1:2005)	Class A
EN 55024: A2: 2003	Immunity
• EN 61000-4-2: 1995 + Amendments A1: 1998 + A2: 2001	Electrostatic Discharge
• EN 61000-4-3: 2006 + A1: 2008	Radiated Emissions
• EN 61000-4-4: 2004 + Corrigendum 2006	Electrical Fast Transients
• EN 61000-4-5: 2006	Surge Immunity
• EN 61000-4-6: 2009	Conducted Emissions
• EN 61000-4-8: 2010	Power Frequency Magnetic Field
• EN 61000-4-11: 2004	Voltage Dips, Interruptions and Fluctuations
IEC 60950-1:2005 (2nd Edition); Am 1:2009	Information Technology Equipment - Safety
EN 60950-1:2006+A11:2009+A1:2010+A12:2011	Information Technology Equipment – Safety

## COMPLIANCE AND CE DECLARATION OF CONFORMITY - QUICK-CONNECT DVI/HDMI-SR INTERFACE

Compliance testing was performed to the following regulations:

- **FCC Part 15, Subpart B**
- **ICES-003, Issue 4: 2004**
- **European Standard EN 55022 A: 2006 + A1: 2007(CISPR 22:2005/A1:2005)**
- **EMC Directive 2004/108/EC**

Class A  
Class A  
Class A  
Class A



### FCC Part 15 Compliance

This equipment has been tested and found to comply with the limits for a Class A digital device, pursuant to Part 15, Subpart B, of the FCC Rules. These limits are designed to provide reasonable protection against harmful interference when the equipment is operated in a commercial environment. This equipment generates, uses, and can radiate radio frequency energy and, if not installed and used in accordance with the instruction manual, may cause harmful interference to radio communications. Operation of this equipment in a residential area is likely to cause harmful interference in which case the user will be required to correct the interference at his/her own expense.

Operation is subject to the following two conditions: (1) This device may not cause interference, and (2) This device must accept any interference including interference that may cause undesired operation of the device.

Changes or modifications not expressly approved by Vaddio can affect emission compliance and could void the user's authority to operate this equipment.

### ICES-003 Compliance



This digital apparatus does not exceed the Class A limits for radio noise emissions from digital apparatus set out in the Radio Interference Regulations of the Canadian Department of Communications.

Le présent appareil numérique n'émet pas de bruits radioélectriques dépassant les limites applicables aux appareils numériques de la classe A prescrites dans le Règlement sur le brouillage radioélectrique édicté par le ministère des Communications du Canada.

### European Compliance



This product has been evaluated for Electromagnetic Compatibility under the EMC Directive for Emissions and Immunity and meets the requirements for a Class A digital device. In a domestic environment this product may cause radio interference in which case the user may be required to take adequate measures.

Ferrite cylinders are included in order to the Quick-Connect DVI/HDMI SR Interface to strictly comply with the European Community EMC Directives compliance. Use these ferrites to ensure the elimination of possible EMI interference from cell phones and AC motors.

### Standard(s) To Which Conformity Is Declared:

EMC Directive 2004/108/EC

EN 55022 A: 2006 + A1: 2007(CISPR 22:2005/A1:2005) Conducted and Radiated Emissions

EN 55024: 1998 + Amendments A1: 2001 + A2: 2003 - Electromagnetic Compatibility - Immunity

- |   |   |
|---|---|
| • EN 61000-4-2: 1995 + Amendments A1: 1998 + A2: 2001 | Electrostatic Discharge                   |
| • EN 61000-4-3: 2006 + A1: 2008                       | Radiated Emissions                        |
| • EN 61000-4-4: 2004 + Corrigendum 2006               | Electrical Fast Transients                |
| • EN 61000-4-5: 2006                                  | Surge Immunity                            |
| • EN 61000-4-6: 2009                                  | Conducted Emissions                       |
| • EN 61000-4-8: 2010                                  | Power Frequency Magnetic Field            |
| • EN 61000-4-11: 2004                                 | Voltage Dips, Interrupts and Fluctuations |
| IEC 60950-1:2005 (2nd Edition); Am 1:2009             | Information Technology Equipment - Safety |
| EN 60950-1:2006+A11:2009+A1:2010+A12:2011             | Information Technology Equipment – Safety |

## WARRANTY INFORMATION

(See Vaddio Warranty, Service and Return Policies posted on [vaddio.com](http://vaddio.com) for complete details):

**Hardware\* Warranty:** Two (2) year limited warranty on all parts and labor for Vaddio manufactured products. Vaddio warrants its manufactured products against defects in materials and workmanship for a period of two years from the day of purchase, to the original purchaser, if Vaddio receives notice of such defects during the warranty period. Vaddio, at its option, will repair or replace products that prove to be defective. Vaddio manufactures its hardware products from parts and components that are new or equivalent to new in accordance with industry standard practices.

**Exclusions:** The above warranty shall not apply to defects resulting from improper or inadequate maintenance by the customer, customers applied software or interfacing, unauthorized modifications or misuse, mishandling, operation outside the normal environmental specifications for the product, use of the incorrect, modified or extended power supply or improper site operation and maintenance. Please note that OEM products and products manufactured by other companies are excluded from the Vaddio warranty and are covered by the original manufacturer's warranty.

**Vaddio Customer Service:** Vaddio will test, repair, or replace the product or products without charge if the unit is under warranty. If the product is out of warranty, Vaddio will test, then repair the product or products. The parts and labor charge will be estimated by a technician and confirmed by the customer prior to repair. All components must be returned for testing as a complete unit. Vaddio will not accept responsibility for shipment after it has left the premises.

**Vaddio Technical Support:** Vaddio technicians will determine and discuss with the customer the criteria for repair costs and/or replacement. Vaddio Technical Support can be contacted through one of the following resources: e-mail support at [support@vaddio.com](mailto:support@vaddio.com) or online at [www.vaddio.com](http://www.vaddio.com).

**Return Material Authorization (RMA) Number:** Before returning a product for repair or replacement request an RMA from Vaddio's technical support. Provide the technician with a return phone number, e-mail address, shipping address, product serial numbers and original purchase order number. Describe the reason for repairs or returns as well as the date of purchase. See the General RMA Terms and Procedures section for more information. RMAs are valid for 30 days and will be issued to Vaddio dealers only. End users must return products through Vaddio dealers. Include the assigned RMA number in all correspondence with Vaddio. Write the assigned RMA number clearly on the shipping label of the box when returning the product. All products returned for credit are subject to a restocking charge without exception.

**Voided Warranty:** The warranty does not apply if the original serial number has been removed or if the product has been disassembled or damaged through misuse, accident, modifications, use of incorrect, modified or extended power supply, or unauthorized repair.

**Shipping and Handling:** Vaddio will not pay for inbound shipping transportation or insurance charges or accept any responsibility for laws and ordinances from inbound transit. Vaddio will pay for outbound shipping, transportation, and insurance charges for all items under warranty but will not assume responsibility for loss and/or damage by the outbound freight carrier. If the return shipment appears damaged, retain the original boxes and packing material for inspection by the carrier. *Contact your carrier immediately.*

**Products not under Warranty:** Payment arrangements are required before outbound shipment for all out of warranty products.





Vaddio is a brand of Legrand AV · [www.vaddio.com](http://www.vaddio.com)

Phone 800.572.2011 / +1.763.971.4400 · Fax +1.763.971.4464 · Email [info@vaddio.com](mailto:info@vaddio.com)

Visit us online for firmware updates, specifications, drawings, manuals, technical support information, and more.

©2019 Legrand AV Inc. Vaddio is a registered trademark of Legrand AV Inc. All other brand names or marks are used for identification purposes and are trademarks of their respective owners. All patents are protected under existing designations. Other patents pending.