

Tech Spec

TeleTouch 27 USB

Touch-Screen Multiview Display for MatrixMIX Products

All Locales: 999-80000-027

Features

- Provides an intuitive visual user interface for live production environments
- Our largest multiview display, offering full HD resolution (1080p/60)
- Designed for use with the AV Bridge MatrixMIX and PCC MatrixMIX products
- Shows the video available from each source, with program and preview clearly identified
- Operator can see what the audience sees, including manual transitions
- High-precision capacitive touch-screen does not respond to accidental contact with objects; requires fingertip contact
- Base tilts up to 90°



The TeleTouch 27 USB touch-screen multiview display is not compatible with the ProductionVIEW product line.

Connector Panel



From left to right:

- Power connector – Unit ships with the appropriate cord set(s) for the locale
- DisplayPort – Not used with MatrixMIX products
- HDMI – Connect to the multiviewer output on the AV Bridge MatrixMIX as a visual, touch-based operator's interface for live events
- VGA – Not used with MatrixMIX products
- Audio – Not currently used with MatrixMIX products
- USB 2.0 – Connect to the USB 2.0 output on the AV Bridge MatrixMIX; generates USB control from touch screen events

What's Included

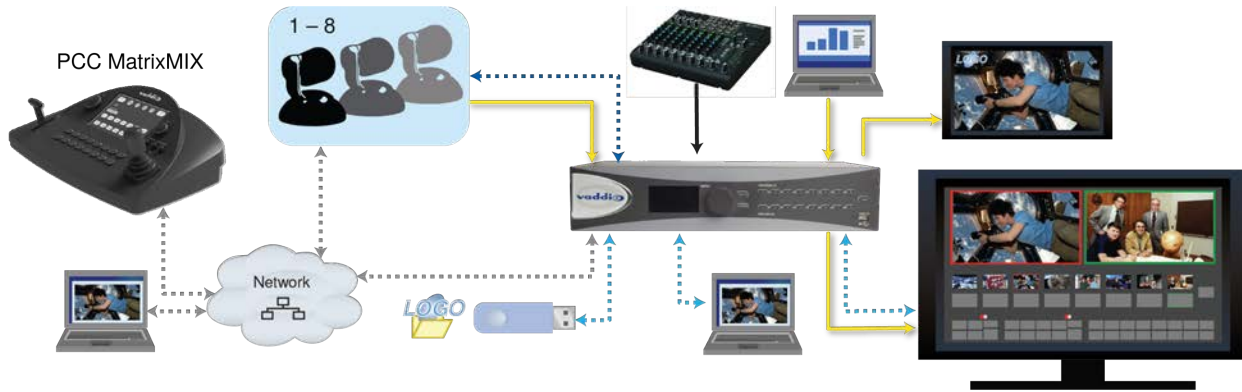
The TeleTouch 27 USB multiviewer ships with the following items:

- TeleTouch 27 USB touch-screen display with base
- AC cord set(s)
- USB 2.0 cable, 4 ft (1.2 m)
- HDMI cable, 4 ft (1.2 m)

Touchboards

205 Westwood Ave, Long Branch, NJ 07740
 Phone: 866-94 BOARDS (26273) / (732)-222-1511
 Fax: (732)-222-7088 | E-mail: sales@touchboards.com

Connections



Specifications

Display and Product Compatibility

Maximum resolution	1080p/60 (Full HD)	Touch-screen type	Surface capacitive
Aspect ratio	16:9	Color depth	32 bit (16.7 million colors)
Viewing angle	170° x 160°	Brightness	300 nits
Compatibility	AV Bridge MatrixMIX, PCC MatrixMIX <i>Not for use with the ProductionVIEW product line</i>		

Power, Environmental, and Physical

Power requirement	90 to 240 VAC	Maximum power consumption	60W
Operating temperature	0 to 50C (32 to 122F)	Storage temperature	-20 to 60C (-4 to 140F)
Humidity	5-90% relative, noncondensing	Weight	10.8 lbs. (4.89 Kg)
Dimensions	Width: 25.4 in. (645 mm); Height: 15.25 in. (387 mm); Depth: 2.63 in. (66.8 mm)		