

Setting Up Data Delivery for a HOBO® ZW Wireless Network

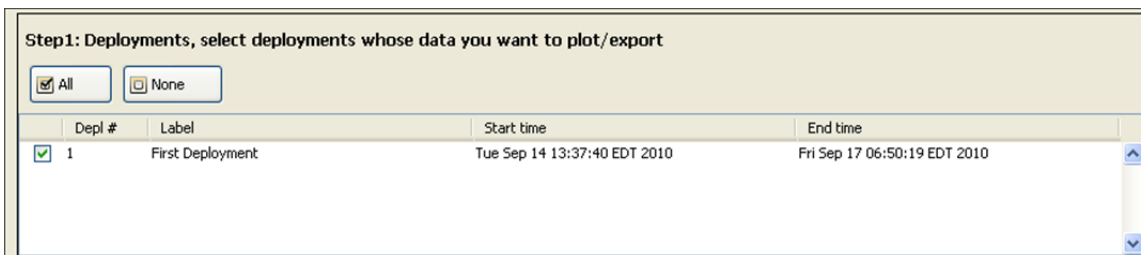
With data delivery, you can automatically save recorded sensor data from nodes in your HOBO ZW Wireless Network to a single .txt, .csv, or .xls file on a regular schedule. This allows you to:

- Store data from your current data node network deployment for future reference and analysis,
- Access data remotely when you are away from the network, and
- Share data with others in a file that is distributed automatically via FTP or email, or saved to a computer or network drive.

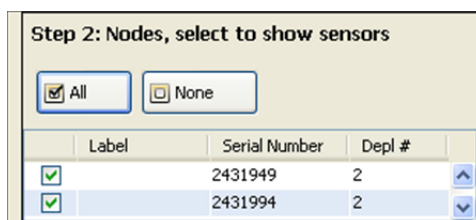
Selecting the Nodes and Sensors for Data Delivery

Before you can set up data delivery, you must first select which nodes and sensors you wish to include in the file by saving the configuration settings. To do this:

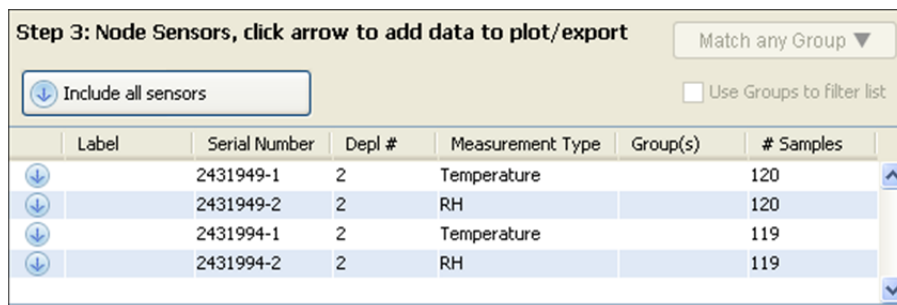
1. From HOBOnode Manager in HOBOWare®, click the Plot/Export Data button.
2. Select the deployment name from the list.



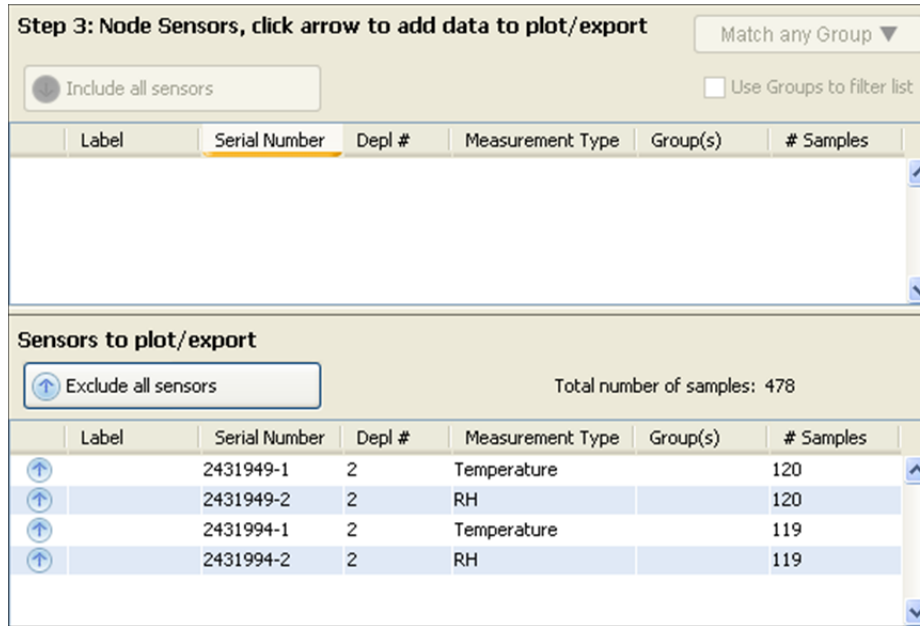
3. Select the individual nodes you would like to include in the file or click the All button to select all nodes.



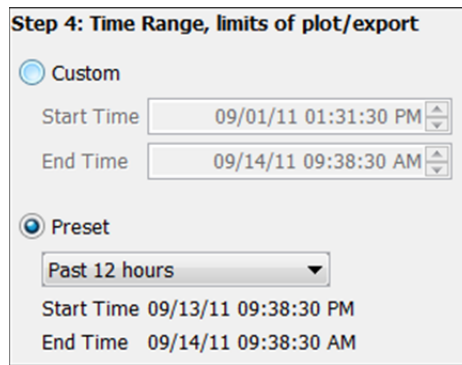
4. Select the sensors you would like to include in the file or click the Include all sensors button.



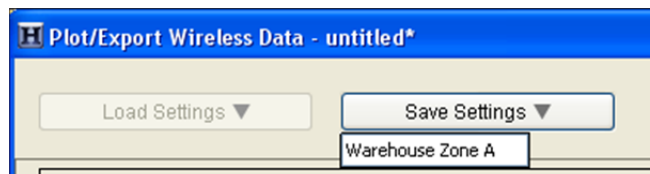
5. Make sure all the sensors you wish to share in your datafile appear in the Sensors to plot/export list.



6. Select Preset and choose a preset time range to determine how much data will be exported each time data delivery runs. In this example, we chose "Past 12 hours," which means only data from the past 12 hours will be exported via data delivery. The most recent 12 hours worth of data is shown for reference. **Note:** Do not choose a custom time range. This is for immediate exports only. If you choose a custom time range for data delivery, then data from that custom time-range only will be exported every time data delivery runs.



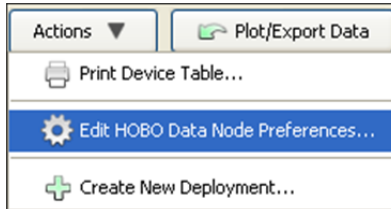
7. Click the Save Settings button and type a name, which will also be used for the data delivery file name, and press Enter. Your configuration settings will be saved.



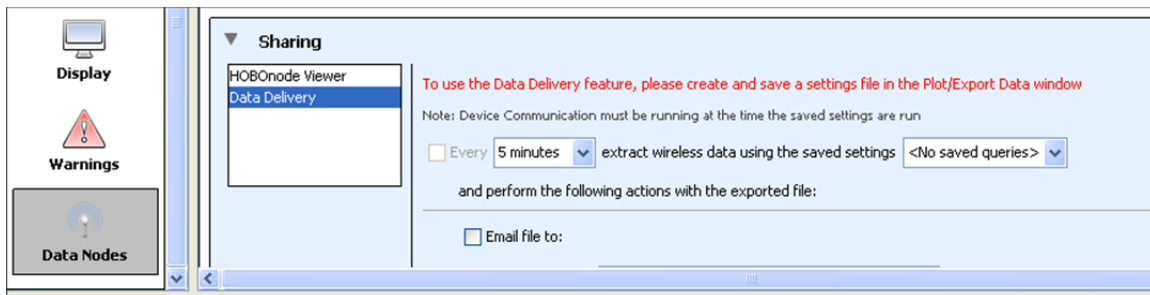
Selecting the Data Delivery Method (Email, FTP, or Directory)

After you have selected the sensors you wish to include in the shared data file as described in the previous section, you can then set up data delivery within Preferences. To do this:

1. Open HOBOnode Manager.
2. Click the Actions button and select Edit HOBO Data Node Preferences.

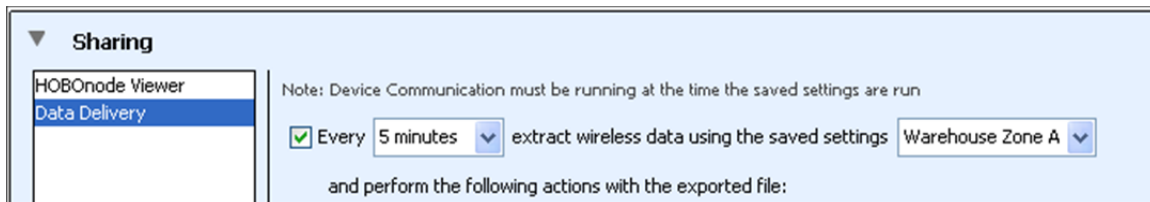


3. Select Sharing, and then select Data Delivery.



Note: If you have not yet selected the sensors you wish to export, then you will see a message indicating you need to create and save a settings file. You must select the sensors in Plot/Export Wireless Data before continuing.

4. Select how often you want to save the data from your network, from 1 minute to 7 days. This will determine what schedule you use to share the data.



5. Select the name of the saved settings that you created in Plot/Export Wireless Data, such as "Warehouse Zone A" in the example above.
6. Select how you would like to share the file: via email, FTP, or saved to a computer or network location. You may select more than one method of sharing the file.

Email:

Type the email address where you want to send the file and select the checkbox if you want to compress the file before emailing it. **Note:** Data delivery uses the same email settings configured for alarm email notifications. If you have never configured an alarm email, you must do that first, even if you don't plan on setting any alarms.



FTP:

Enter the FTP server name, the directory name (remote folder), username, and password for the FTP location where you want to place the file. Test the FTP Connection to make sure it successfully delivers the file to the specified location. Select the checkbox if you want to compress the file before delivering it via FTP. Choose whether you want to overwrite the existing file at that FTP location each time a new file is transferred, or if you want to create a new time-stamped file each time.

Saving it to a hard drive or network:

Select the directory where you want to save the files. Choose whether you want to overwrite the file each time a file is saved, or if you want to create a new file each time.

When you are done configuring your data delivery settings, click **OK** in the main Preferences window.

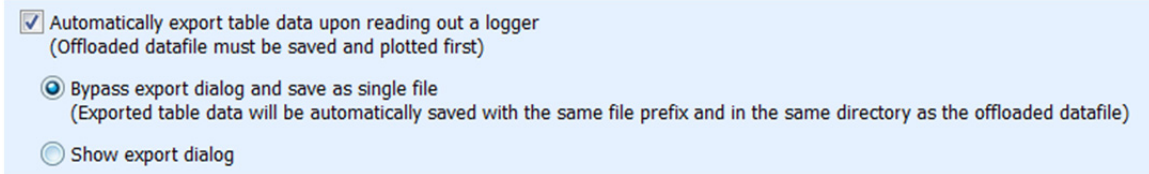
The sensor data from your data network will then be saved and shared on the schedule that you selected. The data will be saved as a .txt, .csv, or .xls file that you can import into HOBOWare, Microsoft Excel, and other programs for analysis. The file type is determined by the export settings in Preferences.

Notes:

- Data delivery will not run unless device communication is also running. This means if you opt to stop device communication when you close HOBOnode Manager, then data delivery will also stop. Once you restart the device communication, then data delivery will commence again on the previously configured schedule.

- The preferences for data delivery may include the names of settings files from old network deployments. If you enable data delivery and use the saved settings from an old deployment, you will see a message indicating "No data found for selected sensors." Choose a settings file from the current deployment, or create a new one with Plot/Export Wireless Data.

Important: Data Delivery will not work properly if the "Show export dialog" setting is selected in the export preferences. To disable this setting, select Preferences from the File menu in Windows or the HOBOWare menu in Macintosh. In the General category, select Export Settings. Make sure "Show export dialog" is not selected. Even if the "Automatically export table data upon readout of logger" option is disabled, the "Show export dialog" must not be selected for Data Delivery to work properly. Your preferences must look like this:

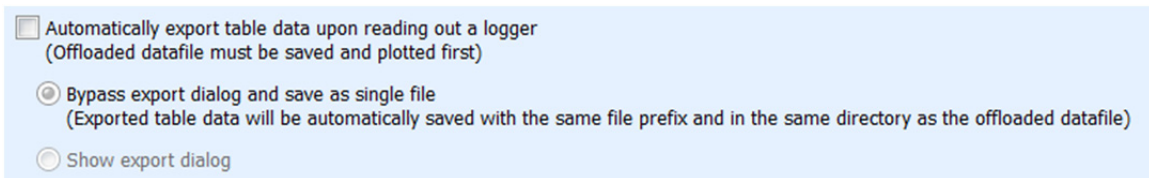


Automatically export table data upon reading out a logger
(Offloaded datafile must be saved and plotted first)

Bypass export dialog and save as single file
(Exported table data will be automatically saved with the same file prefix and in the same directory as the offloaded datafile)

Show export dialog

or this:

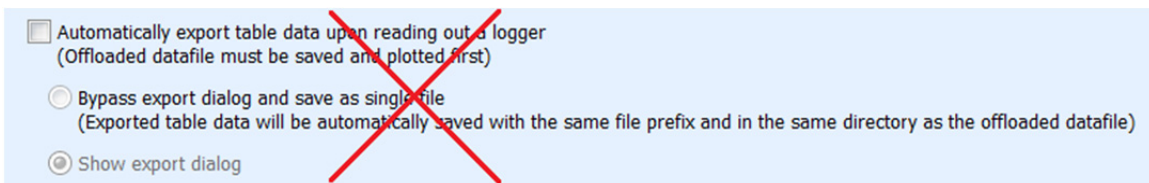


Automatically export table data upon reading out a logger
(Offloaded datafile must be saved and plotted first)

Bypass export dialog and save as single file
(Exported table data will be automatically saved with the same file prefix and in the same directory as the offloaded datafile)

Show export dialog

but not like this:



Automatically export table data upon reading out a logger
(Offloaded datafile must be saved and plotted first)

Bypass export dialog and save as single file
(Exported table data will be automatically saved with the same file prefix and in the same directory as the offloaded datafile)

Show export dialog

for Data Delivery to work correctly.

Tip: You can also share data from your HOBOWare data node network by enabling a HOBOWare Viewer webpage. When data delivery is configured to save files to your computer or a network drive, the files will also be available on the Data tab in HOBOWare Viewer. Note that if you change the file directory used for data delivery when HOBOWare Viewer is enabled, you will need to restart HOBOWare Manager before you can access the files from the Data tab.