

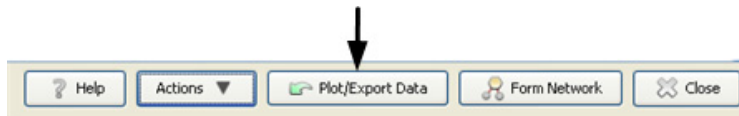
Plotting or Exporting Data from a HOBOnode ZW Wireless Network

With HOBOnode Manager, you can view data and plots from your HOBOnode data node wireless network in real time, but you also have the ability to plot or export previously logged data. Using the Plot/Export Wireless Data capability, you can plot data directly in HOBOnode Manager or you can export it to a text or .csv file to open in another program for further analysis. You can pinpoint the exact data you wish to plot or export, allowing you to view data from:

- Current and/or previous network deployments,
- Specific data nodes,
- A subset of certain sensors from selected data nodes,
- Groups of data nodes as configured in HOBOnode Manager, and
- A specific date range or timeframe.

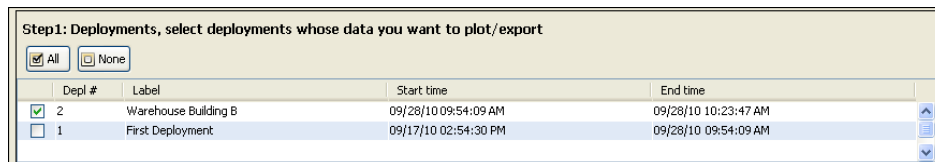
In addition, you can save frequently used settings for quick plotting and exporting in the future and for use with data delivery, which allows you to share data automatically via email, FTP, or saved to a drive on a regular schedule.

To open the Plot/Export Wireless Data tool, click the Plot/Export Data button in HOBOnode Manager (or from the File menu in HOBOnode Manager, select Plot/Export Wireless Data).

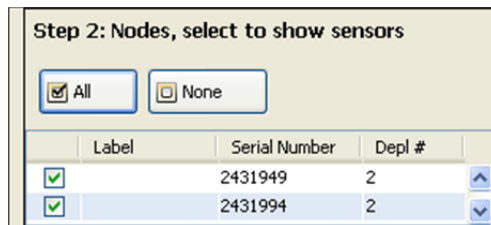


To use the Plot/Export Wireless Data tool:

1. Select the deployment that contains the data you wish to plot or export.



2. Select the data nodes with the sensors whose data you wish to plot or export.



- Each sensor for the data node that you selected in Step 2 will appear in a list as shown below. Click the down arrow icon for each sensor you wish to plot or export, or click the Include All Sensors button if you want to plot or export data from all sensors in the list. **Note:** If you have set up groups in HOBOnode Manager, you can also sort and select sensors within those groups.

Step 3: Node Sensors, click arrow to add data to plot/export Match any Group ▼

Use Groups to filter list

	Label	Serial Number	Depl #	Measurement Type	Group(s)	# Samples
↓		2431949-1	2	Temperature		120
↓		2431949-2	2	RH		120
↓		2431994-1	2	Temperature		119
↓		2431994-2	2	RH		119

The sensors that you selected will move from the top half of the Step 3 pane to the bottom half as shown below. In this example, all sensors were included and are now shown in the "Sensors to plot/export" list. If you wish to make changes, you can either click the up arrow icon remove a specific sensor from the list, or click the Exclude all sensors button to move all the sensors back to the top (you'll then need to select the sensors you wish to plot or export again).

Step 3: Node Sensors, click arrow to add data to plot/export Match any Group ▼

Use Groups to filter list

	Label	Serial Number	Depl #	Measurement Type	Group(s)	# Samples

Sensors to plot/export Total number of samples: 478

	Label	Serial Number	Depl #	Measurement Type	Group(s)	# Samples
↑		2431949-1	2	Temperature		120
↑		2431949-2	2	RH		120
↑		2431994-1	2	Temperature		119
↑		2431994-2	2	RH		119

- Choose the time range for the data you wish to plot or export. Select Custom and specify your own start and end time, or select Preset and choose one of several pre-defined ranges from the drop-down list.

Step 4: Time Range, limits of plot/export

Custom

Start Time

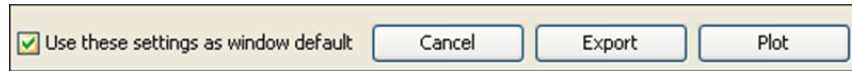
End Time

Preset

Start Time: 09/28/10 09:54:09 AM

End Time: 09/28/10 10:23:47 AM

-
5. Once you have all the settings selected, click the Export or Plot button. Clicking the Export button will open the Export Options dialog, where you can choose to save the data to a single file or to multiple files. Clicking the Plot button opens the Plot Setup dialog, where you can select the series that will appear in the graph in HOBOWare.



Notes:

- If you want the current settings to always appear in the Plot/Export Wireless Data window, then select the "Use these settings as window default" checkbox.
- You can save different combinations of settings to a configuration file in the Plot/Export Wireless Data window for future use, or for use by the data delivery feature. Click the Save Settings button, type a name, and press Enter. Then click the Load Settings button and choose the configuration file you wish to use for the current plot or export.

