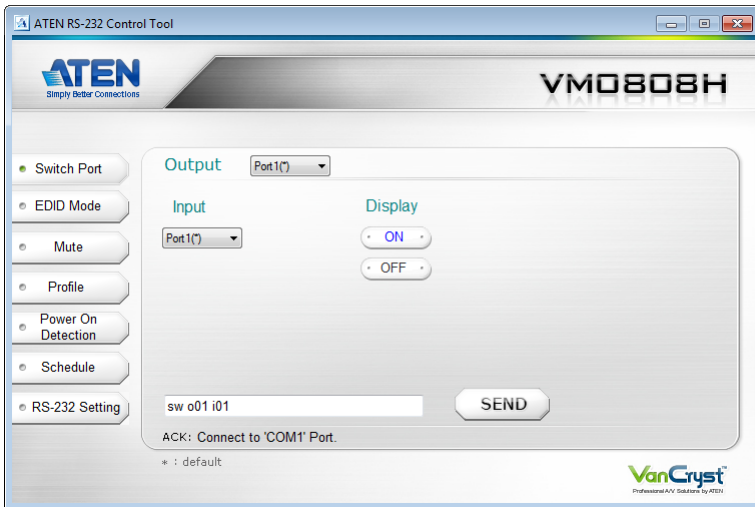


VM0808H HDMI Matrix Switch RS-232 Control Tool

V1.0.064

User Manual



FCC Information

FEDERAL COMMUNICATIONS COMMISSION INTERFERENCE STATEMENT

This equipment has been tested and found to comply with the limits for a Class A digital device, pursuant to Part 15 of the FCC Rules. These limits are designed to provide reasonable protection against harmful interference when the equipment is operated in a commercial environment. This equipment generates, uses, and can radiate radio frequency energy and, if not installed and used in accordance with the instruction manual, may cause harmful interference to radio communications. Operation of this equipment in a residential area is likely to cause harmful interference in which case the user will be required to correct the interference at his own expense.

FCC Caution: Any changes or modifications not expressly approved by the party responsible for compliance could void the user's authority to operate this equipment.

CE Warning:

This is a class A product. In a domestic environment this product may cause radio interference in which case the user may be required to take adequate measures.

RoHS

This product is RoHS compliant.

Safety

This product has been classified as Information Technology Equipment.

SJ/T 11364-2006

The following contains information that relates to China.

部件名称	有毒有害物质或元素					
	铅	汞	镉	六价铬	多溴联苯	多溴二苯醚
电器部件	●	○	○	○	○	○
机构部件	○	○	○	○	○	○

- : 表示该有毒有害物质在该部件所有均质材料中的含量均在SJ/T 11363-2006规定的限量要求之下。
- : 表示符合欧盟的豁免条款, 但该有毒有害物质至少在该部件的某一均质材料中的含量超出SJ/T 11363-2006的限量要求。
- ×: 表示该有毒有害物质至少在该部件的某一均质材料中的含量超出SJ/T 11363-2006的限量要求。



RS-232 Control Tool Operation

Overview

The VM0808H's built-in bi-directional RS-232 serial interface allows system control through a high-end controller, PC, and/or home automation / home theater software package. The RS-232 Control Tool is an application used to send operational commands from your PC – to the VM0808H through a serial (RS-232) interface connection. RS-232 serial operations to and from the VM0808H can be managed using ATEN's Graphical User Interface (GUI) on computers that are running the Microsoft Windows operating system. In order to use the RS-232 Control Tool, two separate programs must be installed on the PC- .NET Framework 2.0 and the RS-232 Control Tool. The procedure for installing and operating the RS-232 Control Tool is detailed in the following section.

Before You Begin

Installing .NET Framework 2.0

To install .NET Framework on your PC, do the following:

1. Download the executable file from the ATEN website or the Microsoft Download Center online, and run it.
2. Follow the instructions on the screen. The installation applet will automatically detect the operating system and install the correct drivers

Note: For Windows 7 64-bit systems, the following must be installed first:

- 1) Microsoft Office 64-bit Access Database software; and
 - 2) Microsoft 64-bit ODBC and OLEDB driver.
-

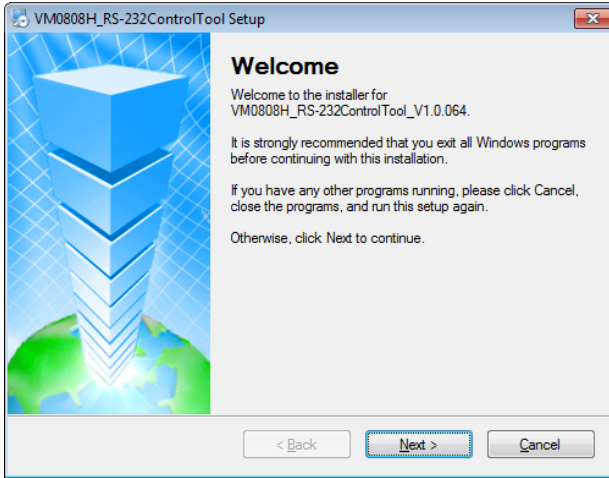
Installing the RS-232 Control Tool

To install the RS-232 Control Tool, do the following:

1. Download the RS-232 Control Tool from the Download or VH0808H's *Resource* page on our website:

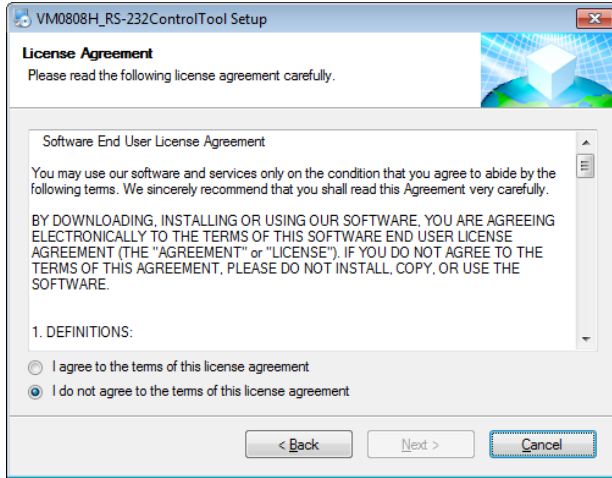
`www.aten.com`

2. Save the file to a convenient location.
3. Double click to run the setup file. The Welcome screen appears:



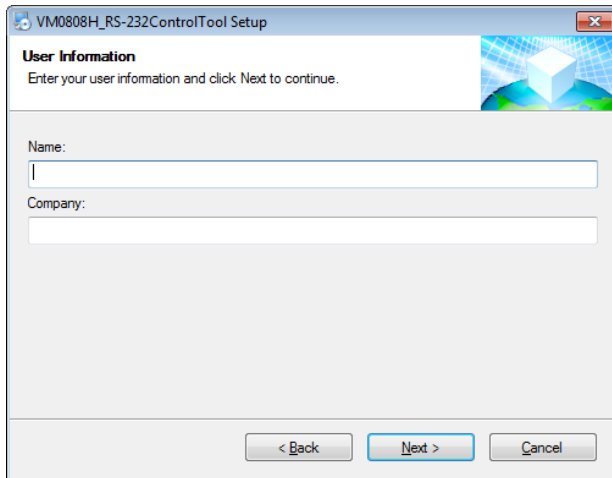
Click **Next**.

4. The License Agreement appears:



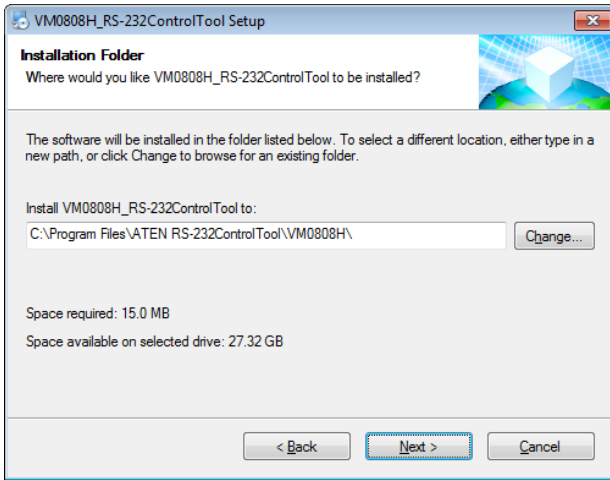
If you agree with the License Agreement, select *I agree with the terms of this license agreement*, and click **Next**.

5. The User Information screen appears:

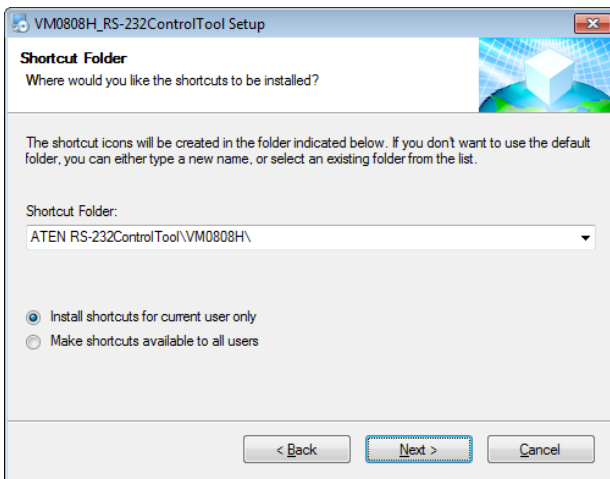


Fill in your *Name* and *Company*, then click **Next**.

6. When the Installation Folder screen appears, you can select where you want to install the program by clicking **Change**, or use the default installation location provided, then click **Next**.

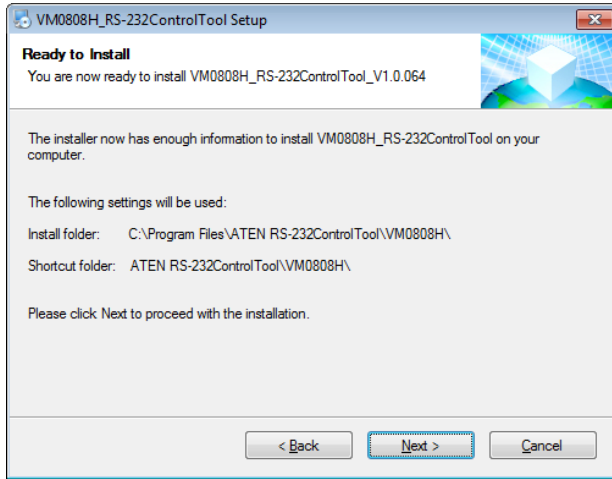


7. From the Shortcut Folder screen type in or use the drop-down menu to enter the folder where you want to install the shortcuts:

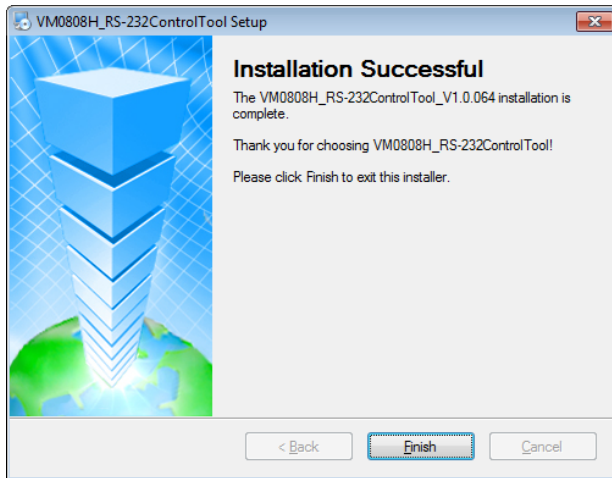


Then select *Install shortcuts for current user only*, or *Make shortcuts available to all users*, and click **Next**.

8. At the Ready to Install screen confirm your settings, click **Back** if you need to make changes, or click **Next** to begin the installation:



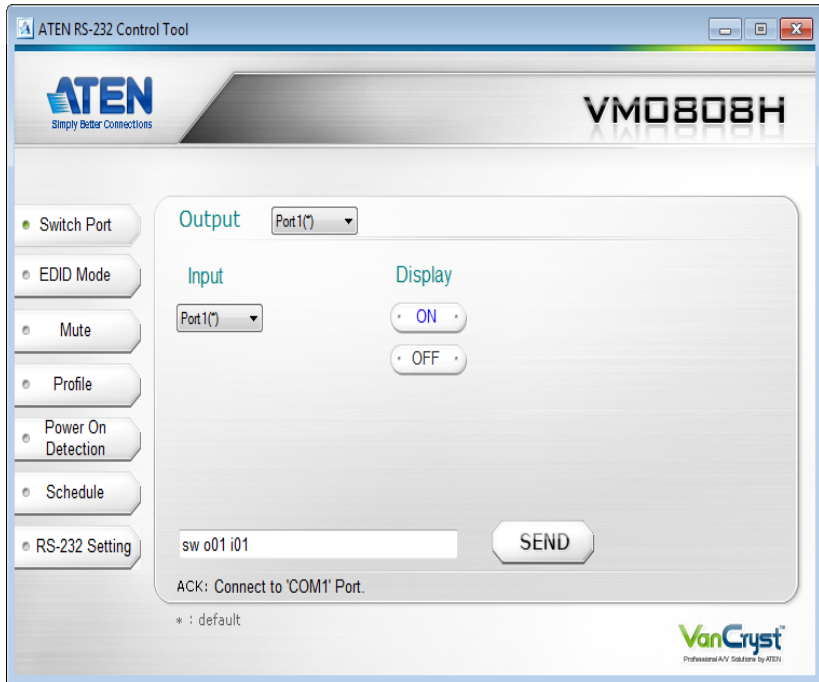
9. When the installation has completed successfully, the following screen will appear:



Click **Finish**. You are now ready to use the RS-232 Control Tool.

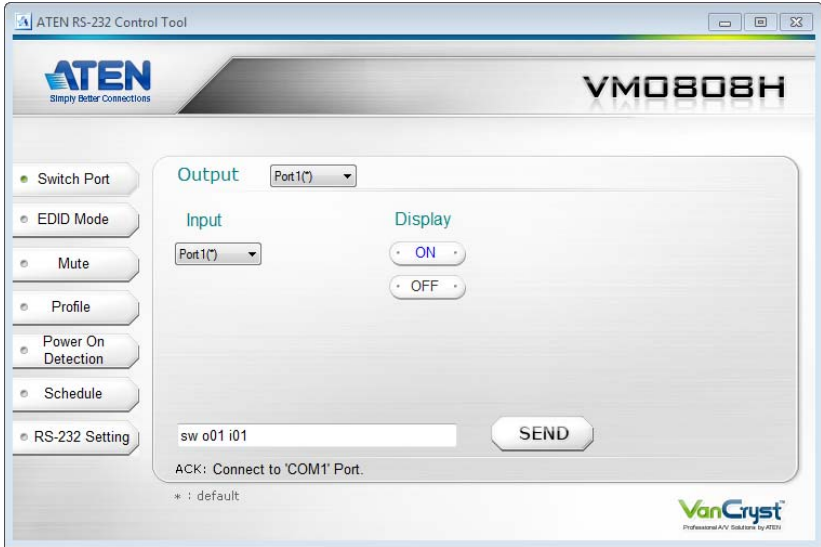
GUI Main Page

The RS-232 Control Tool is a convenient and intuitive application to send RS-232 commands to your VM0808H. For detailed information about the function of each RS-232 command, see the VM0808H's user manual. To invoke the GUI, simply click the RS-232 Control Tool shortcut. The interface opens on the *Switch Port* page by default, as shown below:



The various elements of the GUI are described in the following sections.

Switch Port



The Switch Port page is used to connect source and display ports, and to power On/Off displays. On the Switch Port page, the following actions are possible:

- ◆ Select the **Output** port from the drop-down menu (options are Ports 1–8 and *).
 - * = all output ports
- ◆ Select the **Input** port from the drop-down menu (options are Ports 1–8).
- ◆ Turn the **Display** On or Off.
- ◆ Use the text box to manually enter the command.
- ◆ Click **Send** to send the command.

Switch Port Commands

These actions can also be performed by keying the command into the text box, and clicking **Send**.

The available formulas for Switch Port commands are as follows:

1. Switch Command + Input Command + Port Number + Output Command + Port Number + [Enter]

For example, to switch input port 02 to output port 05, type the following:

sw i02 o05 [Enter]

2. Switch Command + Output Command + Port Number + Control + [Enter]

For example, to turn off output on port 03, type the following:

sw o03 off [Enter]

3. Switch Command + Output Command + Port Number + Control + [Enter]

For example, to switch output port 04 to the next port, type the following:

sw o04 + [Enter]

Possible Values

The following table shows the possible values for switch commands:

Command	Description
sw	Switch command
Input Command	Description
i	Input command
Input Port Number	Description
xx	01-08 port (default is 01)
Output Command	Description
o	Output Command
Output Port Number	Description
yy	01-08 port (default is 01)
*	All output ports
Control	Description
on	Turn on

Control	Description
off	Turn off
+	Next port
-	Previous port

Enter	Description
[Enter]	Enter and send out the command

Switch Port Command Table:

Cmd	In	N1	Out	N2	Control	Enter	Description
sw	i	xx	o	yy *		Enter Key	Switch Input Port xx to Output Port yy (xx:01~08; yy:01~08, *)
sw			o	yy *	on off	Enter Key	Turn on Output Port yy Turn off Output Port yy (yy:01~08, *)
sw			o	yy *	+ -	Enter Key	Switch Output port yy to next Input port. Switch Output port yy to previous Input port. (yy:01~08, *)

Acknowledge:

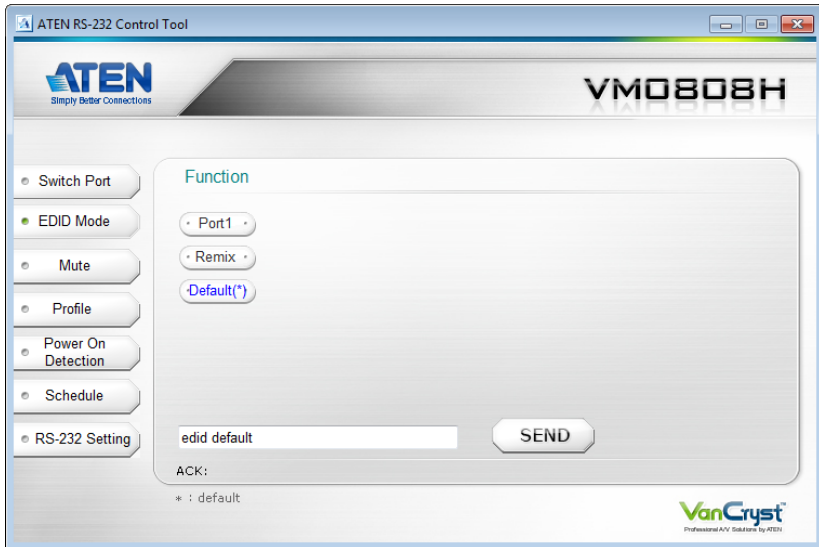
After commands are sent acknowledge messages are returned.

Ack	Description
Command OK	Command is correct and function executed
Command Incorrect	Unavailable command or parameters

Note: 1. Each command string can be separated with a space.

2. The **Port Number** command string can be skipped, and the default value will be used.

EDID Mode



The EDID Mode page is used to set the EDID setting for the displays. The EDID Mode page provides three options – Port1, Remix, and Default(*), as explained below.

- ◆ **Port1:** The EDID from port 01 will be passed to all video sources.
- ◆ **Remix:** Uses the EDID of each connected display according to its connection when the VM0808H is first powered on, or immediately after pressing ENTER/SEND to select the Remix option.
- ◆ **Default:** The default EDID will be passed to all video sources.
- ◆ Use the text box to manually enter the command.
- ◆ Click **Send** to send the command.

EDID Commands:

These actions can also be performed by keying the command into the text box, and clicking **Send**.

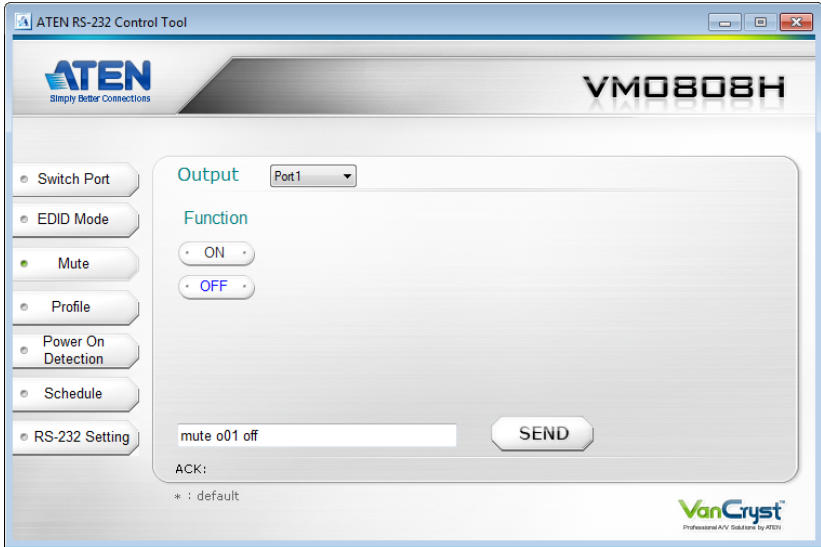
The available formulas for EDID commands are as follows:

1. EDID Command + Control + [Enter]

For example, to change EDID to use the Port1 setting, type the following:

edid port1 [Enter]

Mute



The Mute page is used to mute the audio On/Off for the output ports. On the Mute page, the following actions are possible:

- ◆ Select an **Output** port from the drop-down menu (options are Ports 1–8 and *).
 - * = all output ports
- ◆ Click **ON** to mute the selected port.
- ◆ Click **OFF** to enable the audio of the selected port.
- ◆ Use the text box to manually enter the command.
- ◆ Click **Send** to send the command.

Mute Commands:

These actions can also be performed by keying the command into the text box, and clicking **Send**.

The formulas for Mute commands are as follows:

1. Mute Command + Output Command + Port Number + Control + [Enter]

For example, to mute the audio for output port 05, type the following:

mute o05 on [Enter]

2. Mute Command + Output Command + Port Number + Control + [Enter]

For example, to turn on the audio for output port 05, type the following:

mute o05 on [Enter]

Possible Values

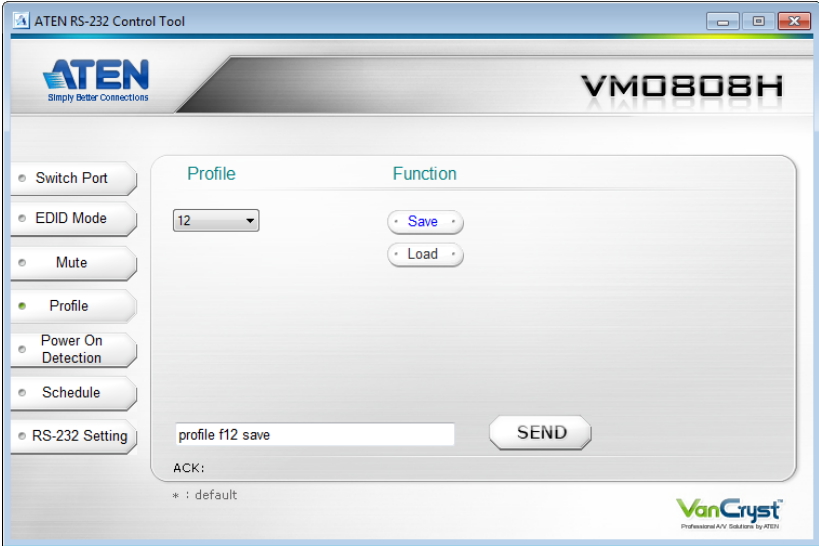
The following table shows the possible values for mute commands:

Command	Description
mute	Mute command
Output Command	Description
o	Output command
Output Port Number	Description
yy	01-08 port (default is 01)
*	All output ports
Control	Description
on	Turn mute on
off	Turn mute off
Enter	Description
[Enter]	Enter and send out the command

Mute Command Table:

Cmd	Output	Num1	Control	Enter	Description
mute	o	yy *	on	Enter Key	Turn mute on for output port yy. (yy: 01~08, *)
mute	o	yy *	off	Enter Key	Turn mute off for output port yy. (yy: 01~08, *)

Profile



The Profile page is used to Save/Load connection profiles stored on the VM0808H. On the Profile page, the following actions are possible:

- ◆ Select a **Profile** number from the drop-down menu (options are 00–31; the default is 00).
- ◆ Click **Save** to save the current profile as the selected number.
- ◆ Click **Load** to load the saved profile that is selected.
- ◆ Use the text box to manually enter the command.
- ◆ Click **Send** to send the command.

Profile Commands:

These actions can also be performed by keying the command into the text box, and clicking **Send**.

The formulas for Profile commands are as follows:

1. Command + Profile + Number + Control + [Enter]

For example, to save the current connection configuration to profile 12, type the following:

profile f12 save [Enter]

2. Command + Profile + Number + Control + [Enter]

For example, to load profile 12, type the following:

profile f12 load [Enter]

Possible Values

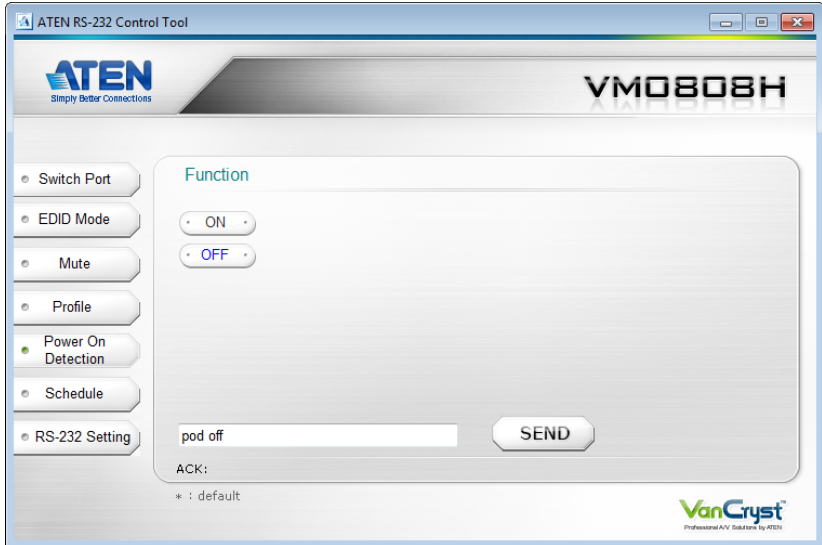
The following table shows the possible values for profile commands:

Command	Description
profile	Profile command
Profile	Description
f	Profile
Profile Number	Description
yy	00–31 (default is 01)
Control	Description
load	Load profile
save	Save profile
Enter	Description
[Enter]	Enter and send out the command

Profile Command Table:

Cmd	Profile	Num1	Control	Enter	Description
profile	f	yy	load	Enter Key	Load profile number: yy. (yy: 00~31)
profile	f	yy	save	Enter Key	Save current profile as number: yy. (yy: 00~31)

Power on Detection



The Power on Detection page is used to enable or disable the Power on Detection feature. Power on Detection is used to automatically switch to the next port with a powered on device, when the current port device is powered off.

From the Power on Detection page, the following Functions are possible:

- ◆ Select **On** to enable the Power on Detection feature.
- ◆ Select **Off** to disable the Power on Detection feature.
- ◆ Use the text box to manually enter the command.
- ◆ Click **SEND** to send the command.

Power on Detection Commands:

These actions can also be performed by keying the command into the text box, and clicking **Send**.

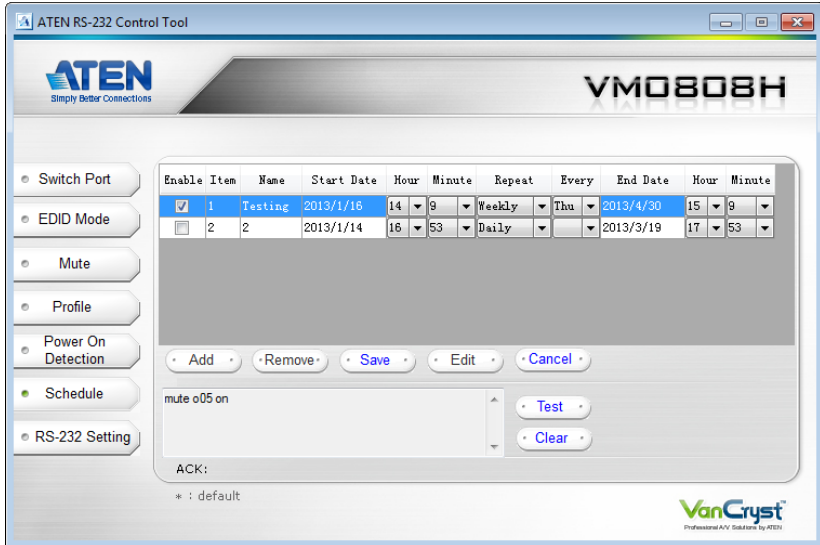
The formulas for Power on Detection commands are as follows:

1. Command + Control + [Enter]

For example, to turn off power on detection, type the following:

pod off [Enter]

Schedule



The Schedule page is used to send commands to the VM0808H at a particular date and time. On the Schedule page, the following actions are possible:

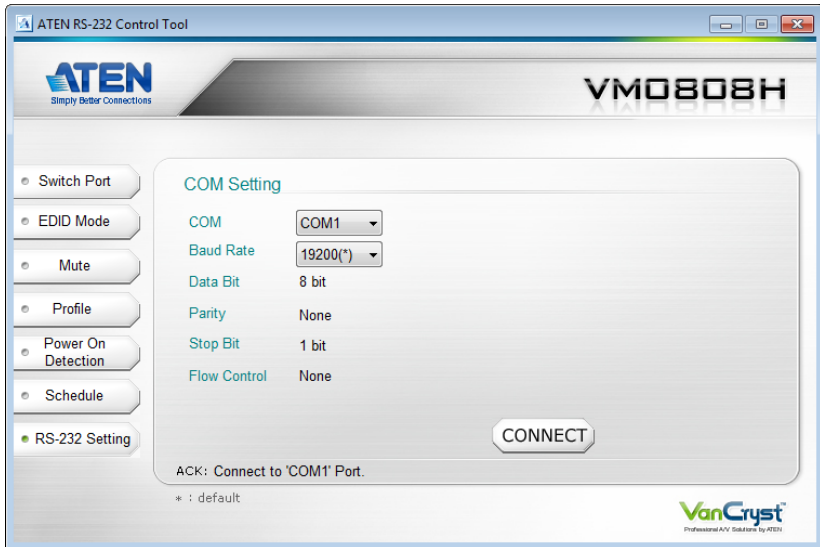
- ◆ Click **Add** to create a scheduled command to execute on the VM0808H.
- ◆ After you add a schedule, fill in the **Name**, then select the **Start Date**, **Hour**, and **Minute** to execute the command. Next use **Repeat** and **Every** to set the frequency of the scheduled command. Finally select the **End Date**, **Hour**, and **Minute** for when you want to end the scheduled command.
- ◆ After you enter the scheduled date/time and conditions, enter the command to be executed in the text box.
- ◆ Click **Test** to test, or **Clear** to clear the command in the text box.
- ◆ Click **Cancel** to remove a scheduled command you haven't saved, or to cancel changes you are making to an existing schedule.
- ◆ Put a check mark in the **Enable** checkbox to enable a scheduled command, or remove the check mark to disable the scheduled command.
- ◆ Click **Save** to save a scheduled command.
- ◆ To change a scheduled command, highlight the schedule, and click **Edit**. After making your modifications click **Save**.
- ◆ To remove a scheduled command, highlight the schedule and click **Remove**.

Acknowledgement (ACK):

After scheduled commands are saved acknowledge messages are returned.

ACK	Description
Add success	The scheduled command was added successfully.
Modify success	The scheduled command was updated and saved successfully.
Modified failure	The scheduled command failed to save the updated change.
Please input name	Provide a name in the <i>Name</i> column for the scheduled command you are attempting to add.
Please input Command	Enter a command to be executed in the entry box.

RS-232 Setting



On the RS-232 Settings page, the serial port should be configured as follows:

Baud Rate	19200
Data Bits	8
Parity	None
Stop Bits	1
Flow Control	None

From the RS-232 Settings page you can set the COM serial port and Baud Rate. To set the COM port or Baud Rate, do the following:

Select a **COM** port or **Baud Rate** from the drop-down menu and click **CONNECT**.

If the port connection exists, the *Acknowledgment* message will read:

Open port 'COM1' successfully.