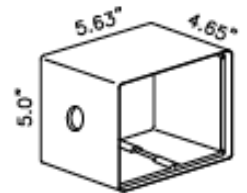
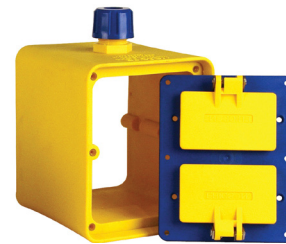
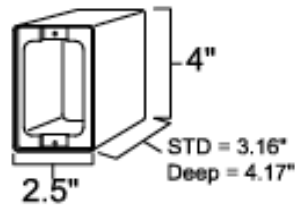


6000 & 8000 Series Portable Outlet Boxes



6000 Series Features

- Non-conductive boxes are crush proof and resistant to job site oils
- Molded of thermoplastic vulcanizate (TPV)
- High-visibility dual-color safety system for easy identification
- Cover plates and clamps are molded of impact resistant nylon and resistant to job site oils
- Built-in TPV cord entrance seals out dirt, dust and other contaminants
- Available as pendant and feed-through boxes
- Available with a wide range of cover plates
- Wire mesh cord grips available

8000 Series Features

- Extra-deep box provides additional wiring space -perfect for use with all cords up to #6/4
- Molded of thermoplastic vulcanizate (TPV)
- Non- conductive boxes are crush proof and resistant to jobsite oils
- High-visibility dual-color safety system for easy identification
- Cover plates and clamps are molded of impact resistant nylon and resistant to jobsite oils
- Built-in TPV cord entrance seals out dirt, dust and other contaminants
- Available as pendant and feed-through boxes
- Wire mesh cord grips available
- Available with a wide range of cover plates

6000 Series Cord Clamp Selection Guide



	For Duplex (2) Receptacles		For Single (2) Receptacles: 1.39" dia. hole		For Single (2) Receptacles: 1.572" dia. hole	
	Standard Depth	Extra Deep	Standard Depth	Extra Deep	Standard Depth	Extra Deep
Pendant	6000	6002	6005	6006	6010	6011
* Feed-Through	6000-F	6002-F	6005-F	6006-F	6010-F	6011-F

*All 6000 Series feed-throughs have cord grip nuts and grommets

6100 Series Cord Grip Nut Selection Guide

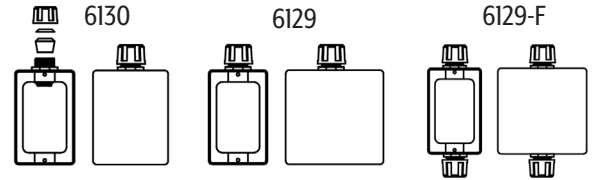


	For Duplex (2) Receptacles		For Single (2) Receptacles: 1.39" dia. hole		For Single (2) Receptacles: 1.572" dia. hole	
	Standard Depth	Extra Deep	Standard Depth	Extra Deep	Standard Depth	Extra Deep
Pendant	6100	6102	6105	6106	6110	6111
Feed-Through	6100-F	6102-F	6105-F	6106-F	6110-F	6111-F

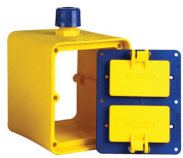
6000 & 6100 Series Cover Plates



6100 Series with Cable Nut and Grommet Seal

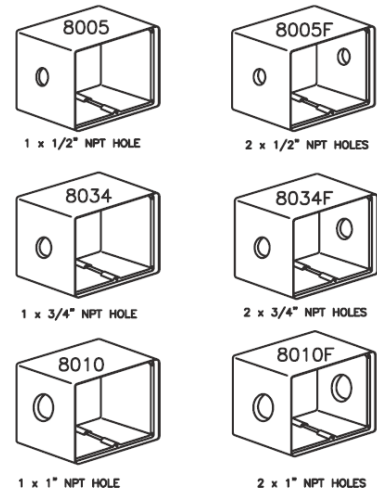


8000 Series Selection Guide

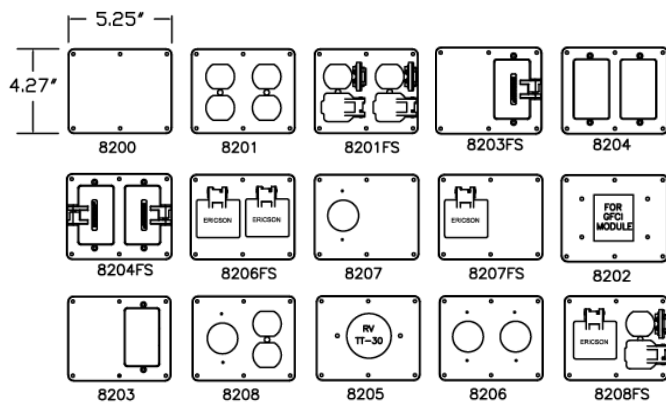


Catalog Number	Description (Box with strain relief opening)
8005	Box with 1 x 1/2" npt hole
8005F	Box with 2 x 1/2" npt holes (1 hole at each end)
8034	Box with 1 x 3/4" npt hole
8034F	Box with 2 x 3/4" npt holes (1 hole at each end)
8010	Box with 1 x 1" npt hole
8010F	Box with 2 x 1" npt holes (1 hole at each end)

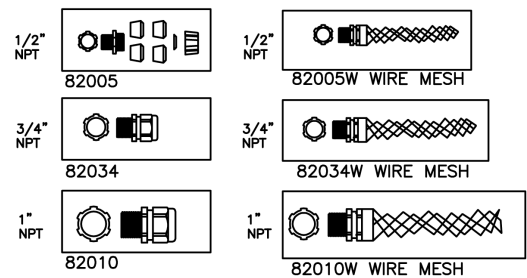
8000 Series Pre-Punched Boxes



8000 Series Cover Plates



6000 & 8000 Series Strain Reliefs



* 6100 box may need to be drilled to accommodate for bushing of the Strain Relief
 * For 6000 series with a cable clamp, please use Ericson's I-Grips series for an additional strain relief solution.



Ericson Manufacturing Company
 4323 Hamann Parkway
 Willoughby, OH 44094, USA

1.800.374.2766
 info@ericson.com
 ericson.com
 L1000496B

