

USER MANUAL

THERMAL IMAGER

PCE-TC 26



ENGLISH

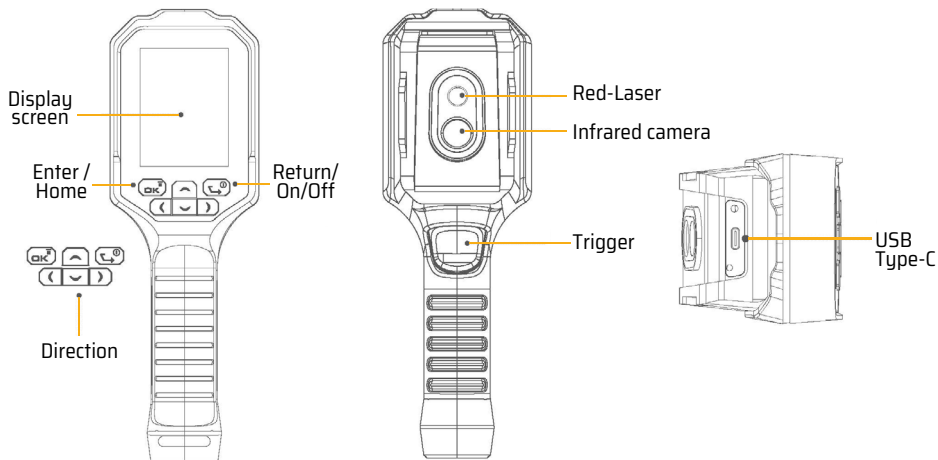


User manuals in various languages (français, italiano, español, português, niederlands, türk, polski) can be found via our product search on:
www.pce-instruments.com

OVERVIEW

The PCE-TC 26 infrared thermal imager adopts the display method of infrared thermal imaging, which can measure the temperature of each pixel of the target object and capture the state of the object more clearly.

KEYS AND FUNCTIONAL DESCRIPTION



» Charging indication:

USB Type-C interface is used for charging. During charging, the display screen is normally on and display the current power volume.

» On/Off:

Short press POWER to power on or long press POWER to power off.

» Photographing and video recording:

Short press TRIGGER in power-on state to photograph, or long press TRIGGER to record videos.

» Data transmission:

When connecting with a computer through the USB Type-C wire, the thermal imager can generate the USB drive and copy photos/videos through the Windows system.

FUNCTIONAL DESCRIPTION

1. On/Off

Short press POWER in power-off state to power on or long press POWER in power-on state to power off.

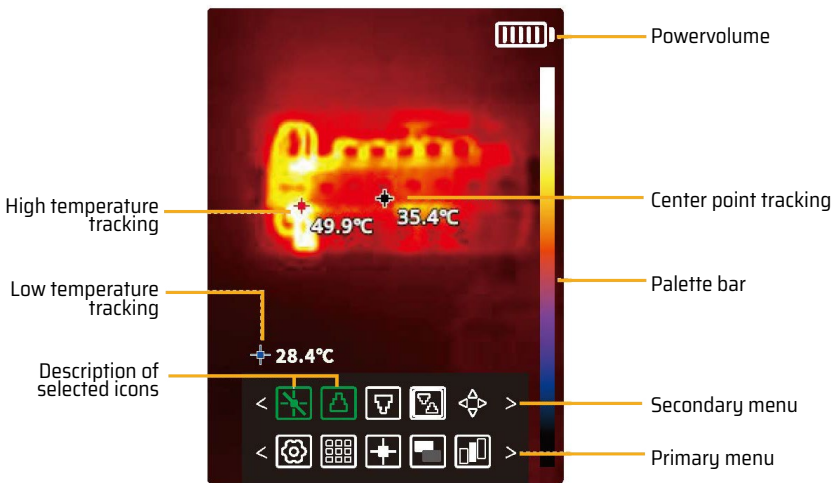
2. Main interface

Press LEFT and RIGHT on this interface to switch the palette, or press UP and DOWN to switch the function of visible light imaging or infra red imaging.

Short press TRIGGER to photograph or long press TRIGGER to record videos.

Press POWER on this interface to light off the screen and save power or press any keys to light on the screen again and enter the interface.

Press OK to display the following menu interface:



After the primary menu pops up, select a function with LEFT and RIGHT, press OK to pop up the secondary menu. Press POWER to return to the main interface.

After entering the secondary menu, select a function with LEFT and RIGHT, press OK to confirm the selected function, and press POWER to return to the primary menu. Both photographing and video recording are valid on this interface.

3. Photographing and video recording

Short press TRIGGER to photograph (image format: jpg).

Long press TRIGGER to record videos (video format: mp4).

4. Album

Press OK on the main interface to pop up the primary menu, select the album with LEFT and RIGHT, press OK to enter the album.

All the pictures and videos in the album are arranged in the shooting time.

Select the pictures or videos with UP and DOWN, press OK for fullscreen display or play.

Press UP and DOWN in the display or play state to switch the previous or next file.

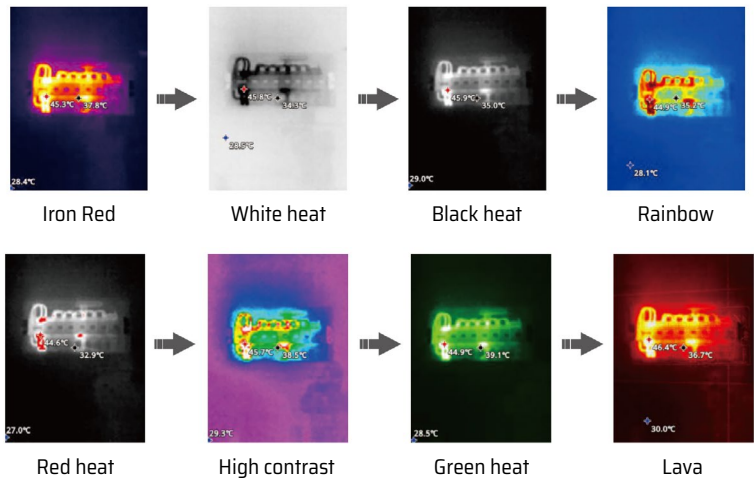
After play or pressing POWER, return to the album list interface.

SYSTEM SETTINGS

Option	Description of system settings
Language switch	Chinese (Simplified), Chinese (Traditional), English, French, German, Spanish, Russian, Dutch, Japanese, Korean and Arabian
Emissivity	0.01 ... 0.99
Unit switch	Degree centigrade, Fahrenheit and Kelvin
Temperature alarm (On/Off) setting	Select the upper/lower limit alarm or set the alarm value
Storage settings	View the internal storage situation and formatting
Date and time	Time setting: Year/month/day/hour
Auto OFF	Set the auto OFF time if there is no operation for a long time
Palette bar display switch	Whether the screen palette bar is displayed
Screen brightness	Screen brightness (adjustable)
Factory reset	Whether to reset the factory data (optional)

PALETTE

To optimize different scenarios and facilitate observing different target objects, the thermal imager comprises 8 common palettes.



TEMPERATURE MEASUREMENT MODE

» **Conventional temperature measurement**

Support temperature measurement at the center point as well as continuous high/low temperature tracking

» **Regional temperature measurement**

Choose some regions for center point and high/low temperature tracking and lest, or zoom in/out the temperature measurement region for different scenarios.

LASER

Pressing OK on the main screen will bring up a primary menu.
Selecting LEFT or RIGHT will access the submenu where you can choose the Laser function.
Press OK to activate it. Once activated, press OK again to deactivate the laser.

TECHNICAL PARAMETERS

Handheld thermal imaging	
Resolution	120 x 90
Working band	8 ... 14 μm
Frame rate	25 Hz
NETD	<60 mK @ 25 °C
Field angle	H=38° / V=50°
Emissivity	0.01 ... 0.99
Temperature measurement range	Low temperature: -10 ... 160 °C High temperature: 160 ... 400 °C
Temperature measurement accuracy	±2 °C or ±2 % of the reading
Screen size	2.8 inches
Palette	Iron red, white heat, black heat, rainbow, red heat, high contrast, green heat and lava
Temperature measurement	Support full-screen temperature measurement of highest/lowest/ center point and mild region
Laserlevel	Class II

General	
Language	Chinese (Simplified), Chinese (Traditional), English, French, German, Spanish, Russian, Dutch, Japanese, Korean and Arabian
Interface	USB Type-C (support charging and data transmission)
Battery	2600mAh lithium battery
Capacity	8G internal memory
Picture storage format	JPG
Video format	MP4
Working time	4 hours if the battery is fully charged
Working temperature	-10 ... 50 °C
Storage temperature	-40 ... 85 °C
Net weight	300 g
Product dimension	219 x 72 x 66 mm

DISPOSAL

For the disposal of batteries in the EU, the (EU) 2023/1542 directive of the European Parliament applies. Due to the contained pollutants, batteries must not be disposed of as household waste. They must be given to collection points designed for that purpose. In order to comply with the EU directive 2012/19/EU we take our devices back. We either re-use them or give them to a recycling company which disposes of the devices in line with law. For countries outside the EU, batteries and devices should be disposed of in accordance with your local waste regulations. If you have any questions, please contact PCE Instruments.

PCE INSTRUMENTS CONTACT INFORMATION

Germany

PCE Deutschland GmbH
Im Langel 26
D-59872 Meschede
Deutschland
Tel.: +49 (0) 2903 976 99 0
Fax: +49 (0) 2903 976 99 29
info@pce-instruments.com
www.pce-instruments.com/deutsch

United Kingdom

PCE Instruments UK Ltd
Trafford House
Chester Rd, Old Trafford
Manchester M32 0RS
United Kingdom
Tel: +44 (0) 161 464902 0
Fax: +44 (0) 161 464902 9
info@pce-instruments.co.uk
www.pce-instruments.com/english

The Netherlands

PCE Brookhuis B.V.
Twentepoort West 17
7609 RD Almelo
Nederland
Telefoon: +31 (0)53 737 01 92
info@pcebenelux.nl
www.pce-instruments.com/dutch

France

PCE Instruments France EURL
23, rue de Strasbourg
67250 Soultz-Sous-Forêts
France
Téléphone: +33 (0) 972 3537 17
Numéro de fax: +33 (0) 972 3537 18
info@pce-france.fr
www.pce-instruments.com/french

Italy

PCE Italia s.r.l.
Via Pesciatina 878 / B-Interno 6
55010 Loc. Gragnano
Capannori (Lucca)
Italia
Telefono: +39 0583 975 114
Fax: +39 0583 974 824
info@pce-italia.it
www.pce-instruments.com/italiano

United States of America

PCE Americas Inc.
1201 Jupiter Park Drive, Suite 8
Jupiter / Palm Beach
33458 FL
USA
Tel: +1 (561) 320-9162
Fax: +1 (561) 320-9176
info@pce-americas.com
www.pce-instruments.com/us

Spain

PCE Ibérica S.L.
Calle Mula, 8
02500 Tobarra (Albacete)
España
Tel.: +34 967 543 548
Fax: +34 967 543 542
info@pce-iberica.es
www.pce-instruments.com/espanol

Turkey

PCE Teknik Cihazları Ltd.Şti.
Halkalı Merkez Mah.
Pehlivan Sok. No.6/C
34303 Küçükçekmece - İstanbul
Türkiye
Tel: 0212 471 11 47
Faks: 0212 705 53 93
info@pce-cihazlari.com.tr
www.pce-instruments.com/turkish

Denmark

PCE Instruments Denmark ApS
Birk Centerpark 40
7400 Herning
Denmark
Tel.: +45 70 30 53 08
kontakt@pce-instruments.com
www.pce-instruments.com/dansk