



PicoScope 5000 A and B Series

Flexible Resolution Oscilloscopes

User's Guide



Contents

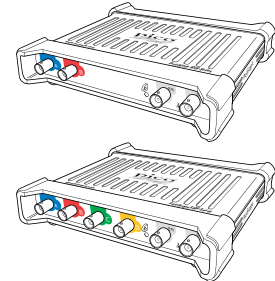
1 Welcome	1
2 Introduction	2
1 Safety symbols	2
2 Safety warning	2
3 FCC notice	3
4 CE notice	3
5 Licence conditions	4
6 Trademarks	5
7 Warranty	5
8 Company details	5
9 Minimum system requirements	6
10 Cleaning	6
3 Pack contents	7
4 Installation	8
5 Product information	9
1 Model comparison table	10
2 Connector diagrams	11
3 Moving to another USB port	12
4 Compensating probes	12
6 Glossary	13
Index	15



1 Welcome

Thank you for buying a **PicoScope 5000 Series Flexible Resolution Oscilloscope** from Pico Technology!

The PicoScope 5000 A and B Series of Flexible Resolution Oscilloscopes from Pico Technology are a range of high-specification real-time measuring instruments that connect to the USB port of your computer. With the PicoScope software you can use these devices as oscilloscopes and spectrum analyzers. With various options of portability, resolution, deep memory, fast sampling rates and high bandwidth, these highly versatile oscilloscopes suit a wide range of applications.



The A models are high-speed portable oscilloscopes with a function generator:

PicoScope 5242A	PicoScope 5243A	PicoScope 5244A
PicoScope 5442A	PicoScope 5443A	PicoScope 5444A

The B models are as the A models, but feature an arbitrary waveform generator and deeper memory:

PicoScope 5242B	PicoScope 5243B	PicoScope 5244B
PicoScope 5442B	PicoScope 5443B	PicoScope 5444B

Here are some of the benefits provided by the PicoScope 5000 A and B Series oscilloscopes:

- **Flexibility:** Whether you want 8, 12, 14, 15 or 16-bit resolution, the PicoScope 5000 Series Oscilloscopes will suit your needs.
- **Portability:** Take the unit with you and plug it in to any Windows PC.
- **Performance:** Up to 1 GS/s sampling, 200 MHz bandwidth and 512 MS buffer.
- **Programmability:** The PicoScope 5000A SDK lets you write your own programs, in your chosen programming language, to control all the features of the scope. Using the API functions, you can develop your own programs to collect and analyze data from the oscilloscope. Refer to the *PicoScope 5000 Series (A API) Programmer's Guide* for more information.
- **Long-term support:** Software upgrades are available to download from our [website](#). You can also call our technical specialists for support. You can continue to use both of these services free of charge for the lifetime of the product.
- **Value for money:** You don't have to pay twice for all the features that you already have in your PC, as the PicoScope 5000 Series oscilloscope contains the special hardware you need and nothing more.
- **Convenience:** The software makes full use of the full-sized display, disk storage, user interface and networking built in to your PC.
- **Five-year warranty:** Your oscilloscope is covered for five years from the day of purchase against manufacturing faults. We don't charge a penny extra for this benefit.

For further information on the PicoScope 5000 A and B Series oscilloscopes, see the [comparison table](#) ^[10] in this manual, and the specifications tables in the PicoScope 5000 Series data sheets available on our [website](#).

2 Introduction

2.1 Safety symbols

Warning Triangle



This symbol indicates that a safety hazard exists on the indicated connections if correct precautions are not taken. Read all safety documentation associated with the product before using it.

2.2 Safety warning

We strongly recommend that you read the general safety information below before using your oscilloscope for the first time. Safety protection built in to equipment may cease to function if the equipment is used incorrectly. This could cause damage to your computer, or lead to injury to yourself and others.

Maximum input range

The PicoScope 5000 A and B Series Oscilloscopes are designed to measure voltages in the range -20 V to +20 V. Attempting to measure voltages outside this range (other than using a differential or isolating probe specifically designed for this purpose) may expose the user to a risk of electric shock.

The analog inputs of the PicoScope 5000 A and B Series Oscilloscopes are protected to ± 100 V. Contact with voltages outside the protection range may cause permanent damage to the unit.

Mains (line) voltages

PicoScope 5000 A and B Series oscilloscopes are not designed for use with mains (line) voltages. To measure mains (or line) voltage, use a differential isolating probe specifically designed for that purpose.

Safety grounding

PicoScope 5000 A and B Series Oscilloscopes connect directly to the ground of a computer through the USB cable provided to minimize interference.

Avoid connecting the ground input to any potential other than ground. The outer shells of the BNC connectors are all at the same potential (shorted together). If in doubt, use a meter to check that there is no significant AC or DC voltage between the ground input of the oscilloscope (and also, if your oscilloscope is connected to a laptop, mains ground) and the point to which you intend to connect it, as this may cause a large current to flow. Failure to check may cause damage to your computer and connected equipment, or lead to injury to yourself and others.

Do not rely on the product to provide a protective safety earth.

Repairs

The oscilloscope contains no user-serviceable parts. Repair or calibration of the oscilloscope requires specialized test equipment and must be performed by Pico Technology.

2.3 FCC notice

This equipment has been tested and found to comply with the limits for a Class A digital device, pursuant to **Part 15 Subpart B of the FCC Rules**. These limits are designed to provide reasonable protection against harmful interference when the equipment is operated in a commercial environment. This equipment generates, uses, and can radiate radio frequency energy and, if not installed and used in accordance with the instruction manual, may cause harmful interference to radio communications. Operation of this equipment in a residential area is likely to cause harmful interference in which case the user will be required to correct the interference at his or her own expense.

For safety and maintenance information see the [safety warning](#) .

2.4 CE notice

The PicoScope 5000 A and B Series Oscilloscopes meet the intent of the **EMC directive 89/336/EEC** and have been tested to **EN61326-1:2006 Class A Emissions and Immunity** standard.

The product also meets the intent of the **Low Voltage Directive** and has been designed to meet **BS EN 61010-1:2010 Safety requirements for electrical equipment for measurement, control, and laboratory use** standard.

2.5 Licence conditions

The software supplied with this product is licensed, not sold. Pico Technology Limited grants a **licence** to the person who installs this software, subject to the **conditions** listed below:

Access. The licensee agrees to allow access to this software only to persons who have been informed of these conditions and agree to abide by them.

Usage. The software in this release is for use only with Pico Technology products or with data collected using Pico Technology products.

Copyright. Pico Technology Limited claims the copyright of, and retains the rights to, all material (software, documents etc.) contained in this release. You may copy and distribute the entire release in its original state, but must not copy individual items within the release other than for backup purposes.

Liability. Pico Technology and its agents shall not be liable for any loss, damage or injury, howsoever caused, related to the use of Pico Technology equipment or software, unless excluded by statute.

Fitness for purpose. Because no two applications are the same, Pico Technology cannot guarantee that its equipment or software is suitable for a given application. It is your responsibility, therefore, to ensure that the product is suitable for your application.

Mission-critical applications. This software is intended for use on a computer that may be running other software products. For this reason, one of the conditions of the licence is that it excludes usage in mission-critical applications; for example, life-support systems.

Viruses. This software was continuously monitored for viruses during production, but you are responsible for virus-checking the software once it is installed.

Support. If you are dissatisfied with the performance of this software, please contact our technical support staff, who will try to fix the problem within a reasonable time. If you are still dissatisfied, please return the product and software to your supplier within 14 days of purchase for a full refund.

Upgrades. We provide upgrades, free of charge, from our website at www.picotech.com. We reserve the right to charge for updates or replacements sent out on physical media.

2.6 Trademarks

Windows is a registered trademark of Microsoft Corporation in the USA and other countries.

Pico Technology Limited and *PicoScope* are trademarks of Pico Technology Limited registered in the United Kingdom and other countries.

2.7 Warranty

Pico Technology **warrants** upon delivery, and for a period of 5 years unless otherwise stated from the date of delivery, that the Goods will be free from defects in material and workmanship.

Pico Technology shall not be liable for a breach of the warranty if the defect has been caused by fair wear and tear, willful damage, negligence, abnormal working conditions or failure to follow Pico Technology's spoken or written advice on the storage, installation, commissioning, use or maintenance of the Goods or (if no advice has been given) good trade practice; or if the Customer alters or repairs such Goods without the written consent of Pico Technology.

2.8 Company details

Address:

Pico Technology
James House
Colmworth Business Park
St Neots
Cambridgeshire PE19 8YP
United Kingdom

Phone: +44 (0) 1480 396 395

Fax: +44 (0) 1480 396 296

Email:

Technical Support: support@picotech.com

Sales: sales@picotech.com

Web site: www.picotech.com

2.9 Minimum system requirements

To ensure that your PicoScope 5000 Series Oscilloscope operates correctly, you must have a computer with at least the minimum system requirements as shown in the following table. The performance of the oscilloscope will be better with a more powerful PC, and will benefit from a multi-core processor.

Item	Absolute minimum	Recommended minimum	Recommended full specification
Operating system	Windows XP SP3 Windows Vista Windows 7 Windows 8*		
	32 bit and 64 bit versions supported		
Processor	As required by Windows	1 GHz	1 GHz
Memory		512 MB	512 MB
Free disk space**		32-bit: 600 MB 64-bit: 1.5 GB	32-bit: 850 MB 64-bit: 2 GB
Ports	USB 1.1 compliant port	USB 2.0 or 3.0 compliant port	

* Not Windows RT.

** The PicoScope software does not use all the disk space specified in the table. The free space is required to make Windows run efficiently.

2.10 Cleaning

Clean the oscilloscope using a soft cloth dampened with a solution of mild soap or detergent in water.

CAUTION: Do not allow water to enter the oscilloscope casing, as this could damage the sensitive electronic components inside.

3 Pack contents

A PicoScope 5000 A or B Series Oscilloscope is supplied with the following items:

- Standard USB cable (4-channel scopes only)
- Double-headed USB cable
- AC Adapter (4-channel scopes only)
- Software and Reference CD
- Installation Guide
- 2 or 4 x Probes (see [Model Comparison table](#)^[10] for probe details)

4 Installation

Important:
Do not connect your PicoScope 5000 Series Oscilloscope to the PC until you have installed the software.

Please note the various power supply options below. Consult the appropriate section relating to the intended use of the oscilloscope and the instructions in the Installation Guide and the leaflet included with your product package.

Powering 2-channel scopes

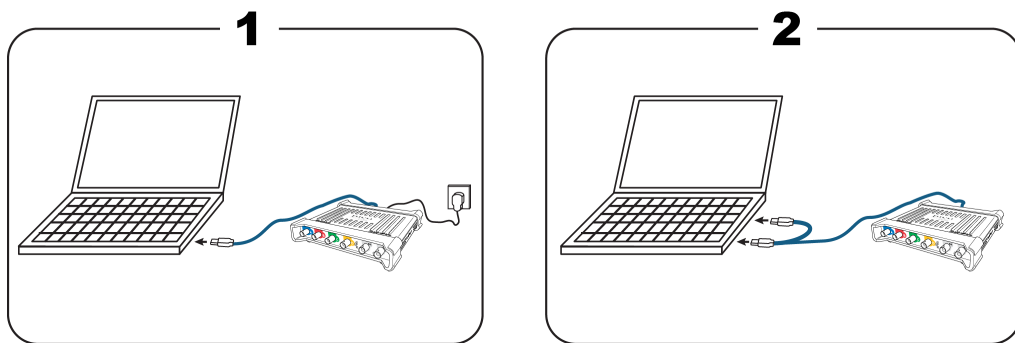
Connect your 5000 Series 2-channel oscilloscope to two free, powered USB ports on the PC or USB hub using the double-headed USB cable supplied (see image 2 below).

Powering 4-channel scopes

When using 1 or 2 channels of the 4-channel 5000 Series oscilloscopes, you have two options for power.

1. If your computer or USB hub does not have two free, powered USB ports, connect your 5000 Series oscilloscope to the PC or hub using the single-headed USB cable supplied. Plug the power adapter into the mains and connect the DC cable to the [DC power socket](#) ^[1] on the rear of the oscilloscope (see image 1 below).
2. If your computer or USB hub has two free, powered USB ports, connect your 5000 Series oscilloscope to two ports on the PC or hub using the double-headed USB cable supplied (see image 2 below).

When using 3 or 4 channels on the 4-channel 5000 Series oscilloscopes connect your oscilloscope to the PC or hub using the single-headed USB cable supplied. Plug the power adapter into the mains and connect the DC cable to the [DC power socket](#) ^[1] on the rear of the oscilloscope (see image 1 below).



Note: If you connect or disconnect the AC adapter while the oscilloscope is in operation it will restart automatically and any unsaved data will be lost.

Checking the installation

Once you have installed the software and connected the oscilloscope to the PC, start the PicoScope software. The software should now display any signal connected to the scope inputs. If you have a probe connected to your oscilloscope, you should see a small 50 or 60 hertz signal in the oscilloscope window when you touch the probe tip with your finger.

5 Product information

Standard oscilloscope connectors

The PicoScope 5000 Series Flexible Resolution Oscilloscopes have input channels with standard BNC connectors and standard input impedance. They are therefore compatible with most oscilloscope probes including x10 and switched x1/x10 types.

The probes supplied with the PicoScope 5000 A and B Series oscilloscopes have been trimmed specifically for use with the scopes they are supplied with. For optimum performance, please use the probes supplied. Although other oscilloscope probes can be used, the specified performance cannot be guaranteed. Replacement probes matched to your PicoScope 5000 can be ordered from Pico Technology.

Signal generator (Gen) output

The **Gen** connector is the output of the oscilloscope's built-in signal generator, which can generate a number of built-in waveforms as well as user-defined arbitrary waveforms (B Models only).

- If you are using the PicoScope 6 program, refer to the *PicoScope 6 User's Guide* for information on how to configure the signal generator.
- If you are writing your own software, refer to the *PicoScope 5000 Series (A API) Programmer's Guide*.

External trigger (Ext) input

The **Ext** input can be used as a trigger source. It is selected using the trigger drop-down menu in the PicoScope software, or using a function call if you are writing your own software.

The **Ext** input uses dedicated circuitry with a software-configurable threshold to detect a trigger signal. This has the advantage of freeing the analog channels for viewing signals. The **Ext** input has the same characteristics as a scope channel so that a supplied probe can be trimmed on one of the channels and then used with the **Ext** input to give best vertical accuracy. If trigger timing accuracy is critical, we recommend using one of the main input channels as the trigger source. These channels use digital triggering (accurate to one sample period) and have a vertical resolution of 1 LSB.

5.1 Model comparison table

For full specifications, refer to the 5000 Series data sheets on your Software and Reference CD or to the 5000 Series page on www.picotech.com.

PicoScope 2-channel models overview					
Model	Maximum Bandwidth	Memory		Waveform Output	Probes Supplied
		8-bit	≥ 12-bit		
5242A	60 MHz	16 MS	8 MS	Func. Gen.	2 x 60 MHz
5242B	60 MHz	32 MS	16 MS	Func. Gen. and AWG	2 x 60 MHz
5243A	100 MHz	64 MS	32 MS	Func. Gen.	2 x 150 MHz
5243B	100 MHz	128 MS	64 MS	Func. Gen. and AWG	2 x 150 MHz
5244A	200 MHz	256 MS	128 MS	Func. Gen.	2 x 250 MHz
5244B	200 MHz	512 MS	256 MS	Func. Gen. and AWG	2 x 250 MHz

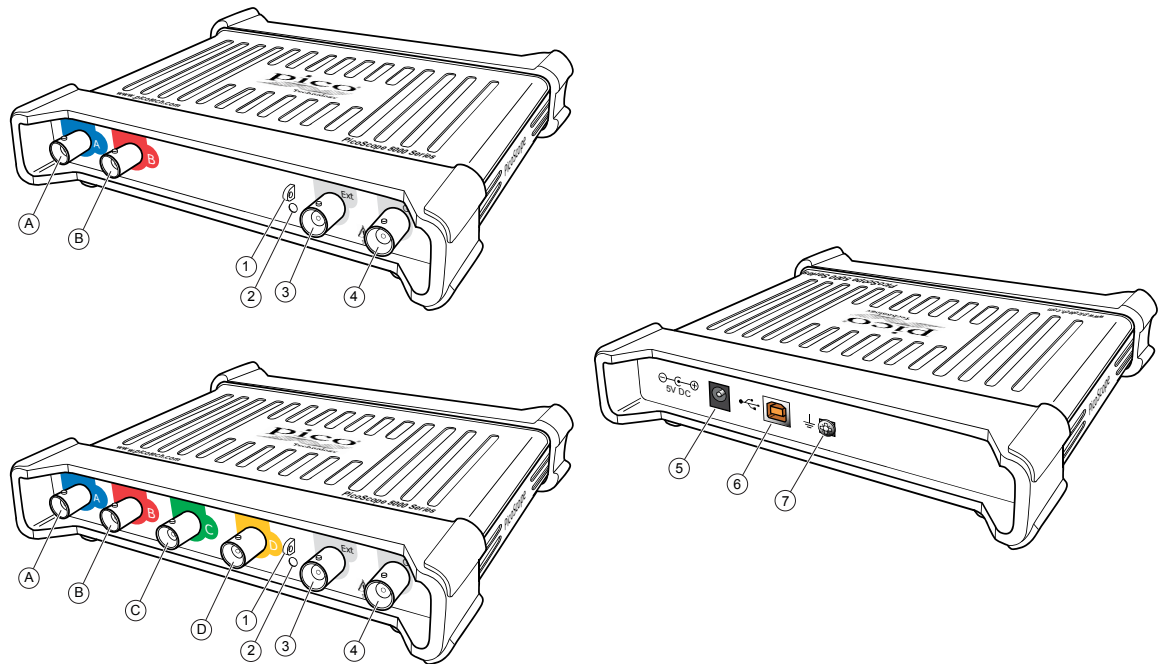
PicoScope 4-channel models overview					
Model	Maximum Bandwidth	Memory		Waveform Output	Probes Supplied
		8-bit	≥ 12-bit		
5442A	60 MHz	16 MS	8 MS	Func. Gen.	4 x 60 MHz
5442B	60 MHz	32 MS	16 MS	Func. Gen. and AWG	4 x 60 MHz
5443A	100 MHz	64 MS	32 MS	Func. Gen.	4 x 150 MHz
5443B	100 MHz	128 MS	64 MS	Func. Gen. and AWG	4 x 150 MHz
5444A	200 MHz	256 MS	128 MS	Func. Gen.	4 x 250 MHz
5444B	200 MHz	512 MS	256 MS	Func. Gen. and AWG	4 x 250 MHz

Resolution vs sampling rate				
Resolution	Sampling rate vs. number of channels in use			
	Any 1 channel	Any 2 channels	Any 3 channels	All channels
8-bit	1 GS/s	500 MS/s	250 MS/s	250 MS/s
12-bit	500 MS/s	250 MS/s	125 MS/s	125 MS/s
14-bit	125 MS/s	125 MS/s	125 MS/s	125 MS/s
15-bit	125 MS/s	125 MS/s	-	-
16-bit	62.5 MS/s	-	-	-

For further information see the specifications tables in the PicoScope 5000 Series data sheets available on our [website](http://www.picotech.com).

5.2 Connector diagrams

PicoScope 5000 A and B Series oscilloscopes



A. Input channel A

B. Input channel B

C. Input channel C

D. Input channel D

1. Probe compensation output

2. LED: red when scope is connected but not operating. Flashes green when the oscilloscope is capturing data.

3. External trigger input

4. Signal generator output

5. DC power socket: for use with the AC adapter supplied. See [Installation](#) ⁸ for details.

6. USB 2.0 port: connects to your PC using the Hi-Speed USB cable supplied. See [Installation](#) ⁸ for powering options.

7. Earth terminal: Some laptop power supplies can produce electrical noise which may interfere with your measurements. If this occurs, the earth terminal can be connected to an external ground point (for example, on the system you are testing) to provide a ground reference for the scope. This can help to avoid external noise interfering with your measurements. Alternatively you can run the laptop using battery power.

5.3 Moving to another USB port

The procedure for moving your PicoScope Oscilloscope to another USB port depends on your operating system.

● **Windows XP**

When you first installed the PicoScope 5000 Series Oscilloscope by plugging it into a USB port, Windows associated the Pico driver with that port. If you later move the oscilloscope to a different USB port, Windows will display the "New Hardware Found Wizard" again. When this occurs, just click "Next" in the wizard to repeat the installation. If Windows gives a warning about Windows Logo Testing, click "Continue Anyway". As all the software you need is already installed on your computer, there is no need to insert the Pico Software CD again.

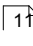
● **Windows Vista, Windows 7 and Windows 8**

The process is automatic. When you move the device from one port to another, Windows displays an "Installing device driver software" message and then a "PicoScope 5000 Series PC Oscilloscope" message. The Oscilloscope is then ready for use.

5.4 Compensating probes

We recommend that you compensate each oscilloscope probe before using it with your PicoScope. Compensation instructions specific to the probe are included in the leaflet supplied with the probe.

Connecting a probe for compensation

1. Plug the probe's BNC connector into the appropriate input channel on the scope.
2. Fit the spring hook (supplied with the probe) on the probe tip.
3. Attach the spring hook to the [probe compensation output](#)  located on the front panel.
4. Attach the ground lead (supplied) to the probe and connect the crocodile clip to the ground shell of one of the scope's BNC inputs.
5. Run the PicoScope software. Set the input coupling to AC and then click Auto Setup, which ensures that the correct range and timebase are selected.
6. Follow the compensation (or 'trimming') instructions in the probe leaflet.

Note: if the probe is moved to a different scope channel, the compensation procedure must be repeated.

6 Glossary

API. Application Programming Interface. A set of function calls that give programmers access to the PicoScope 5000 A/B Series driver.

Bandwidth. The range of input frequencies over which the measured signal amplitude is no more than 3 decibels below its true value.

Buffer size. The size of the oscilloscope buffer memory, measured in samples. In block mode, the buffer memory is used by the oscilloscope to store data temporarily. This allows the oscilloscope to sample data independently of the speed at which it can transfer data to the computer.

Device Manager. Device Manager is a Windows program that displays the current hardware configuration of your computer. For Windows XP: Right-click on 'My Computer,' choose 'Properties', then click the 'Hardware' tab and the 'Device Manager' button. For Windows Vista, and Windows 7: From the Start Menu right-click on 'Computer', choose 'Properties', then click 'Device Manager' in the left panel. For Windows 8, right-click in the bottom left corner of the screen and select 'Device Manager' from the menu.

Driver. A program that controls a piece of hardware. The driver for the PicoScope 5000 A and B Series Oscilloscopes is supplied in the form of a 32-bit Windows DLL, ps5000a.dll. This is used by the PicoScope software, and by user-designed applications, to control the oscilloscopes.

External trigger. This is the BNC connector marked Ext on the PicoScope 5000 A and B Series oscilloscopes. It can be used as a trigger source but not as a waveform input.

Flexible Resolution Oscilloscope. The instrument formed by connecting a PicoScope 5000 A and B Series Oscilloscope to a computer running the PicoScope software application.

Maximum sampling rate. A figure indicating the maximum number of samples the oscilloscope can acquire per second. Maximum sample rates are usually given in MS/s (megasamples per second) or GS/s (gigasamples per second.) The higher the sampling rate of the oscilloscope, the more accurate the representation of the high-frequency details in a fast signal.

MS/s. Megasamples per second. Used to quantify the sampling rate of an oscilloscope.

PicoScope software. This is a software product that accompanies all our oscilloscopes. It turns your PC into an oscilloscope, spectrum analyzer, and meter display.

Signal generator. A built-in circuit that generates signals suitable for driving an external device under test. Its output is on the BNC connector marked Gen on the oscilloscope. If you connect a BNC cable between this and one of the channel inputs, you can send a signal into the channel.

Timebase. A timer that controls the speed at which the scope device captures data. At slow timebases this process is visible as PicoScope draws the trace across the scope view from left to right, but at fast timebases PicoScope draws the whole trace in a single operation. The timebase is measured in units of time (such as seconds) per division. There are ten divisions across the scope view, so the total time across the width of the view is ten times the "per division" setting.

USB 1.1. USB (Universal Serial Bus) is a standard port that enables you to connect external devices to PCs. A typical USB 1.1 port supports a data transfer rate of 12 Mbps (12 megabits per second), much faster than an RS232 port.

USB 2.0. A typical USB 2.0 port supports a data transfer rate that is 40 times faster than USB 1.1. USB 2.0 is backwards-compatible with USB 1.1.

Vertical resolution. A value, in bits, indicating the precision with which the oscilloscope converts input voltages to digital values. The resolution enhancement function in PicoScope can improve the effective vertical resolution.

Voltage range. The range of input voltages that the oscilloscope can measure. For example, a voltage range of ± 20 V means that the oscilloscope can measure voltages between -20 V and $+20$ V. Input voltages outside this range will not be measured correctly, but will not damage the instrument as long as they remain within the protection limits stated in the specifications.

Index

A

Arbitrary waveform generator 9

B

Bandwidth 10

Buffer size 10

C

Calibration 2

Cleaning 6

Company information 5

Compliance 3

Connections

Arbitrary waveform generator 11

Compensation output 11

Earth terminal 11

Ext connector 11

External trigger 11

Function generator 11

Gen connector 11

USB port 11, 12

Contact details 5

E

Earth terminal 9

Ext connector 9

External trigger 9

F

Function generator 9

G

Gen connector 9

L

LED 11

Licence conditions 4

M

Maximum input range 2

Maximum sampling rate 10

Memory 10

Model comparison 10

O

Oscilloscope probe 8, 9, 11

compensating 12

P

Pack contents

AC Adapter 7

Installation Guide 7

Probes 7

Software and Reference CD 7

USB cable (double-headed) 7

USB cable (single-headed) 7

PicoScope 5000 Series 2, 6, 9

PicoScope software 8, 9

Probes 10

R

Repair 2

S

Safety

symbols 2

warning 2, 3

Signal generator 10

output 9

Specifications 10

System requirements 6

T

Technical support 5

Test equipment 2

Trademarks 5

U

USB 6

USB cable (double-headed) 8

USB cable (single-headed) 8

USB port connection 9

W

Warranty 5





Pico Technology

James House
Colmworth Business Park
ST. NEOTS
Cambridgeshire
PE19 8YP
United Kingdom
Tel: +44 (0) 1480 396 395
Fax: +44 (0) 1480 396 296
www.picotech.com