

A photograph of a classroom where a teacher and several students are using tablets. The teacher, a woman with dark hair wearing a red cardigan, is smiling and looking at a tablet. Students around her are also focused on their tablets. The background shows a typical classroom setting with desks, a blue bulletin board, and educational posters.

K-12 TECHNOLOGY

Products for the Classroom

Touchboards

205 Westwood Ave, Long Branch, NJ 07740
Phone: 866-94 BOARDS (26273) / (732)-222-1511
Fax: (732)-222-7088 | E-mail: sales@touchboards.com

TOUCHITTM
TECHNOLOGIES 

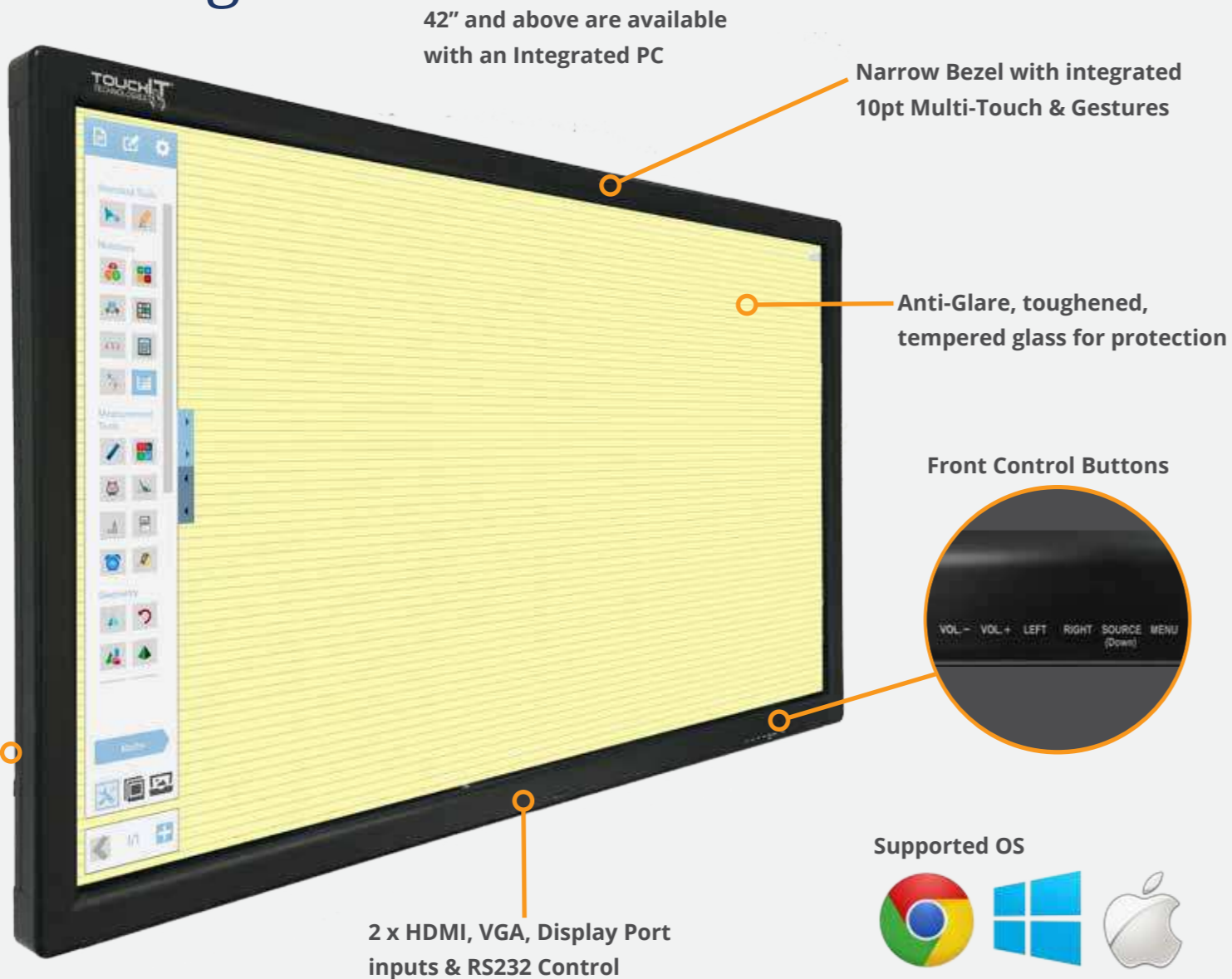
Interactive LED Range

- 32", 42", 46", 55", 65", 70", 75", 80" & 84"
- Full HD & 4K Available
- Commercial Grade Panel
- 60 000 Hours Lifespan
- Integrated PC Available
- 3 Year On Site Warranty (USA, Canada, Australia)

EZ Port (FHD Models only)
Connect a student computer to the LED and switch between the two at the touch of a button



All TouchIT LEDs come with TouchIT Notes Presenter and Oktopus Software.



Front Control Buttons



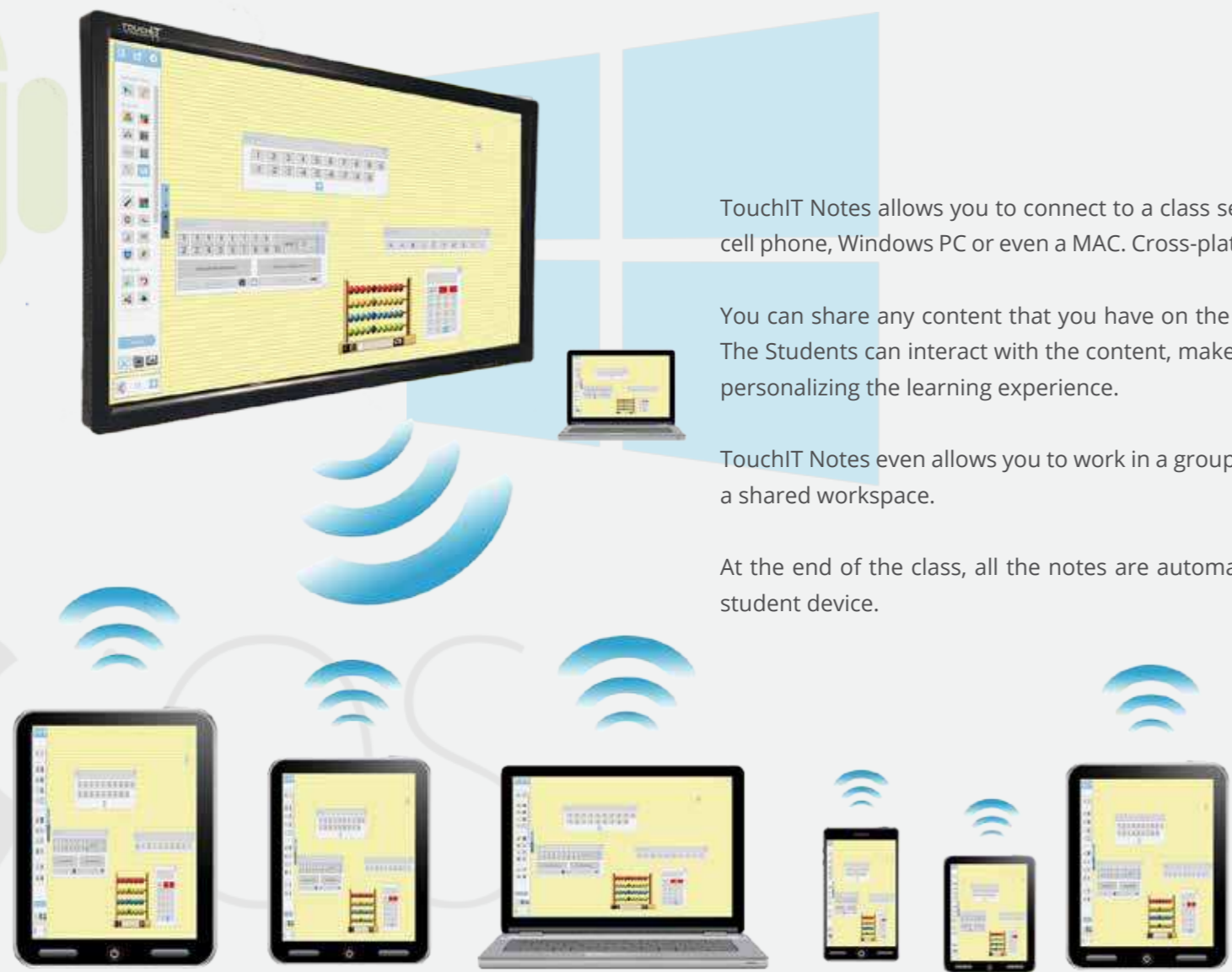
Supported OS



Perfect for Whole Class Teaching



iPad, iPhone, Android, MAC & Windows Collaboration



TouchIT Notes allows you to connect to a class session with a tablet, cell phone, Windows PC or even a MAC. Cross-platform collaboration!

You can share any content that you have on the LED with the Class. The Students can interact with the content, make their own notes so personalizing the learning experience.

TouchIT Notes even allows you to work in a group and collaborate on a shared workspace.

At the end of the class, all the notes are automatically saved to the student device.



Teachers from their own Tablet or Cell Phone Device can have full mouse control of the LED. This allows the freedom to move around the class and interact with the students whilst controlling the LED remotely.



chrome collaboration



chrome

Chromebook collaboration with the TouchIT LED is simple. Start a session from the Teacher laptop (PC or MAC) then all the student Chromebooks can join via the Chrome Browser.

Students can see the screen in real time from the teacher as well as respond to interactive questions that are pushed out to them from the LED.

We take interactive lessons with Chromebooks to the next level!

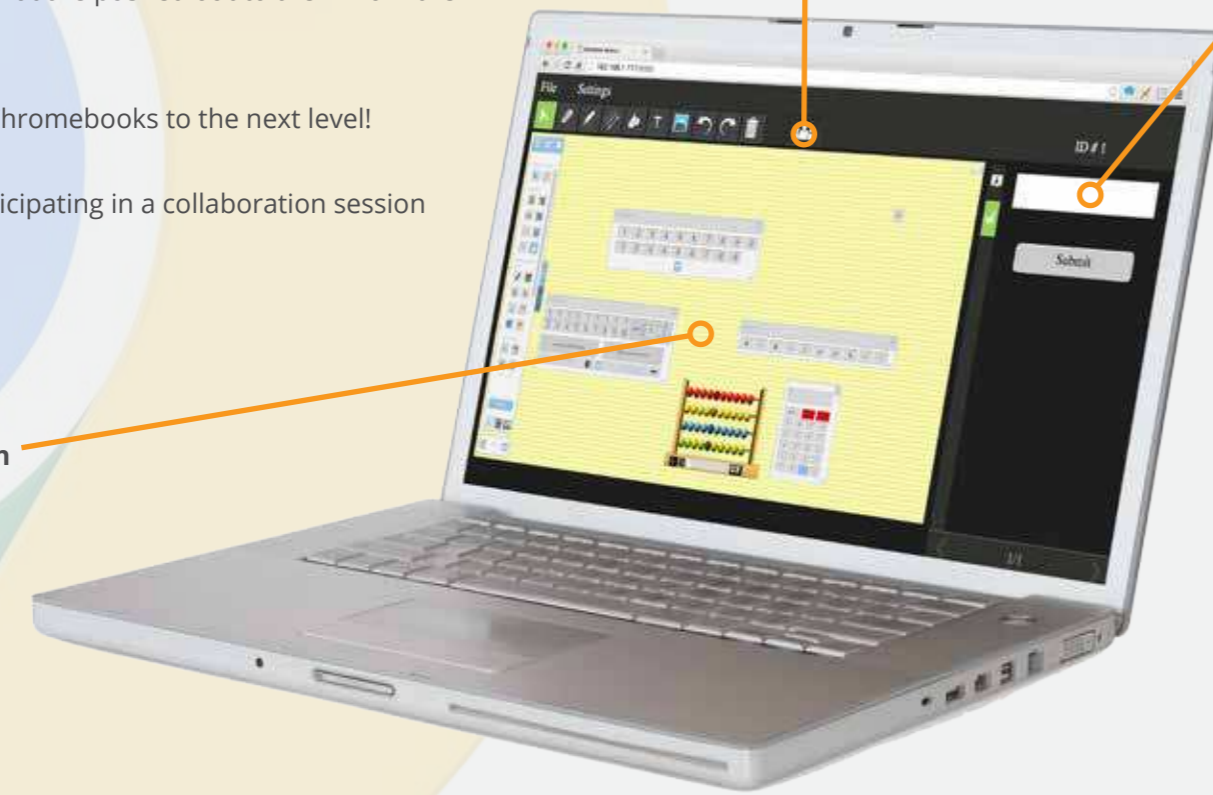
Here we have a Chromebook participating in a collaboration session with the TouchIT Interactive LED.

View all the content from the LED on your own Chromebook in a browser window

Share annotations from your Chromebook with teacher at the LED and the whole class

Respond interactively on your Chromebook to questions sent by the teacher from the LED

Connect students to the TouchIT LED on their own Chromebooks. They can receive content, interact with the LED, annotate from their Chromebook and respond to questions and activities created at the LED by the teacher.



Annotation Software



70+ Subject Specific Tools for Drawing, Math, English, Science, and Geography

Record Audio & Video for Blended Learning & Flipped Classrooms

Create and Save Lessons for Future Use

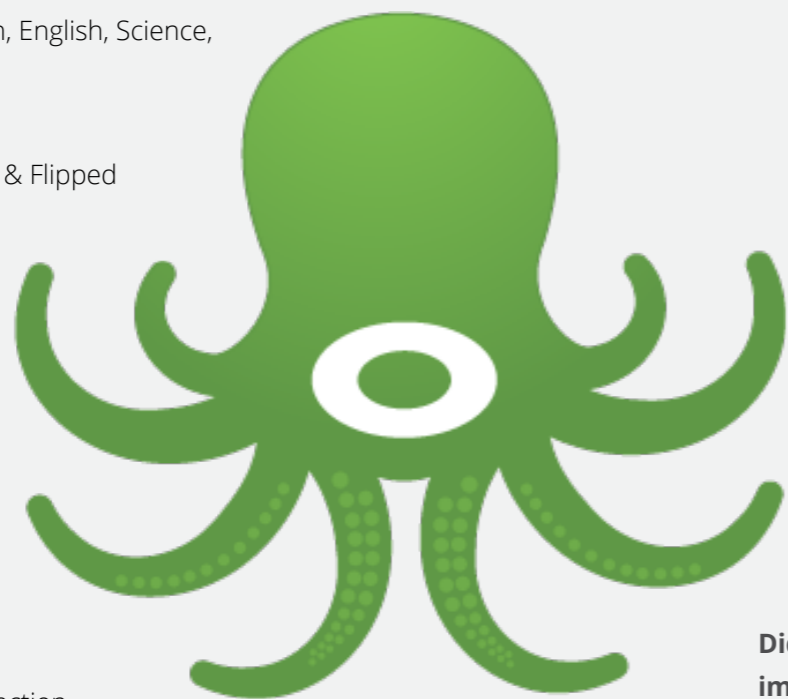
Available in 40+ Languages

Customizable Tool Palette

Compatible with Mac and Windows

Multi-Touch & Multi-Pen for Increased Interaction

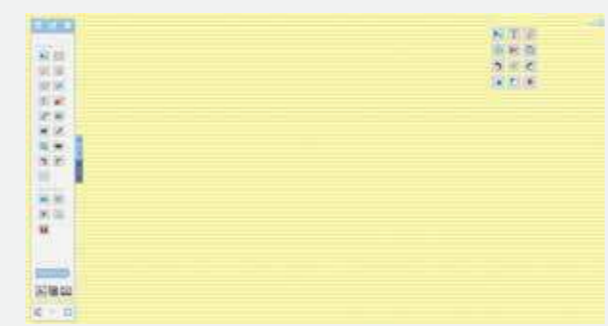
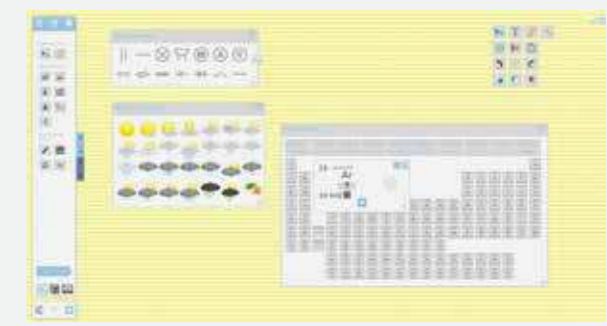
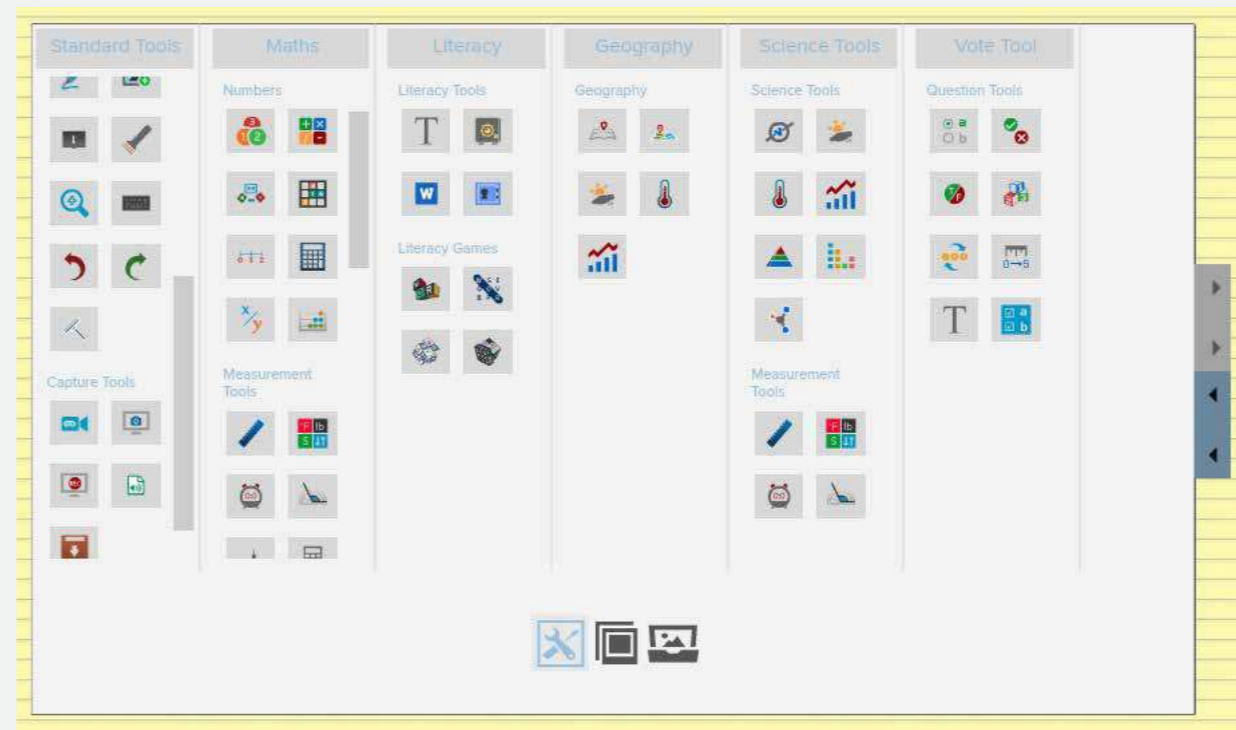
Works over browser content & proprietary applications



Did you know you can even import your existing Smart Notebook and Promethean files into Oktopus?

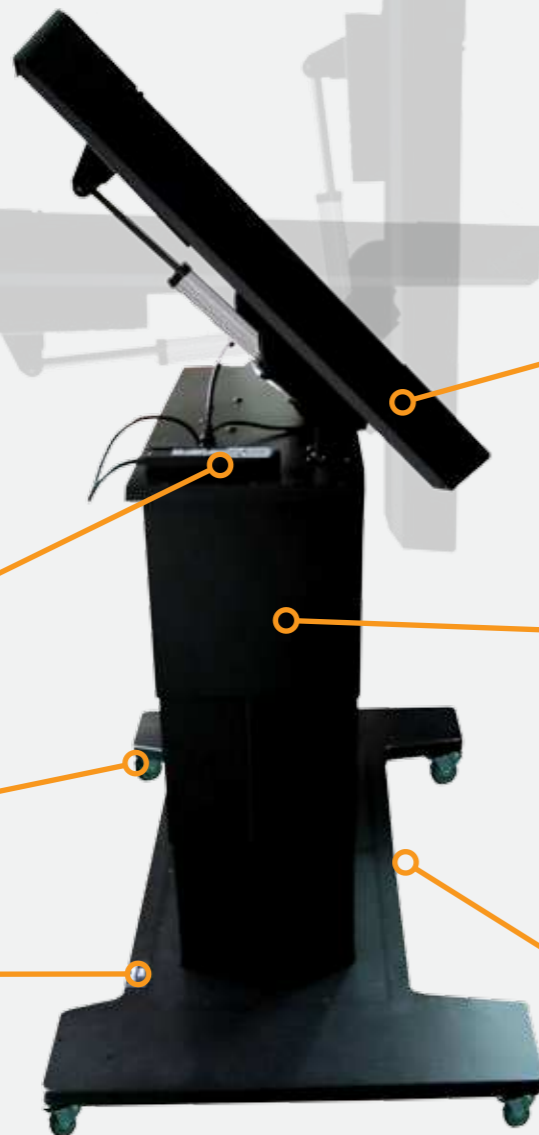
OKTOPUS

Over 70 Tools organized into subject specific toolbars. Only display the tools relevant for your lesson!



TouchIT Fusion - Interactive Table, Easel and LED, with PC, all in one product.

The TouchIT LED Fusion is the future of interactivity. Available with a 55" LED and 32 point multi-touch, Fusion models incorporate an integrated PC, multi-touch LED and an electric mobile stand. The TouchIT Fusion is three products in one! An Interactive Easel, an Interactive Table and an Interactive LED - Choose how you want to use the product at the touch of a button!



55" LED with integrated 32pt Multi-Touch

Electric height adjustable and tilting trolley

Moveable rolling trolley

Single Power Outlet required

Integrated PC, Windows, 500 GB HD, i5 8GB Ram

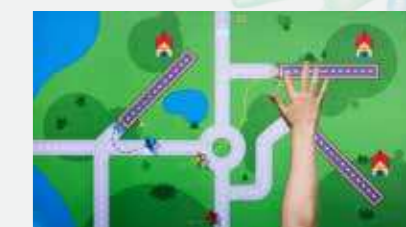
Supplied with Snowflake Entertainment software

Ergonomical design for wheelchair access



TouchIT Fusion is the ideal product for group collaboration and cluster learning activities.

Just some of the applications included in Snowflake Entertainment



Digital Signage Doesn't Need to be Complicated

Install TouchIT Digital Signage Software on any PC and convert it into a Signage Player and connect to any monitor or LED display. Use your school network to update the signage from any computer or tablet with an Internet Browser. Signage made simple!

Flash Clocks

St Mark's High School

Student of the month
Richard Smith -
For help the teachers with out being asked and going up 2 grades in Reading and 1 grade in Maths - Well Done Richard

School Messages
The Head Teacher would like to remind all students that there is a French exchange coming up.
All those that would like to play host to a family please could you let Mrs Taylor in the school office know.

17:39 pm
Saturday, 1st June

Class	Subject	Teacher	Room
Class 1C	Art and Design	Mrs Howard	ACC 40
Class 1D	Registration	Mr Taylor	ACC 42
Class 1D	Information Technology	Mr Taylor	ACC 42
Class 1D	Information Technology	Mr Taylor	ACC 42
Class 1D	Information Technology	Mr Taylor	ACC 42
Class 1D	Lunch		
Class 1D	Information Technology	Mr Taylor	ACC 42
Class 2A	Registration	Mr Jones	ALS 21

Up Coming School Events

NEWS

Uncle named as 1984 child killer
A nine-year-old boy found dead in 1984 after vanishing from his sister's home in Hull was killed by his uncle, police say

HTML Scroller **RSS News Feed** **Images**

DRAG AND DROP CREATION Creating the perfect welcome sign for your school is just a case of dragging and dropping content into place.

INCORPORATE ALMOST ANY FILE FORMAT If you have a school video to advertise what you offer you can easily incorporate this into your Digital Signage

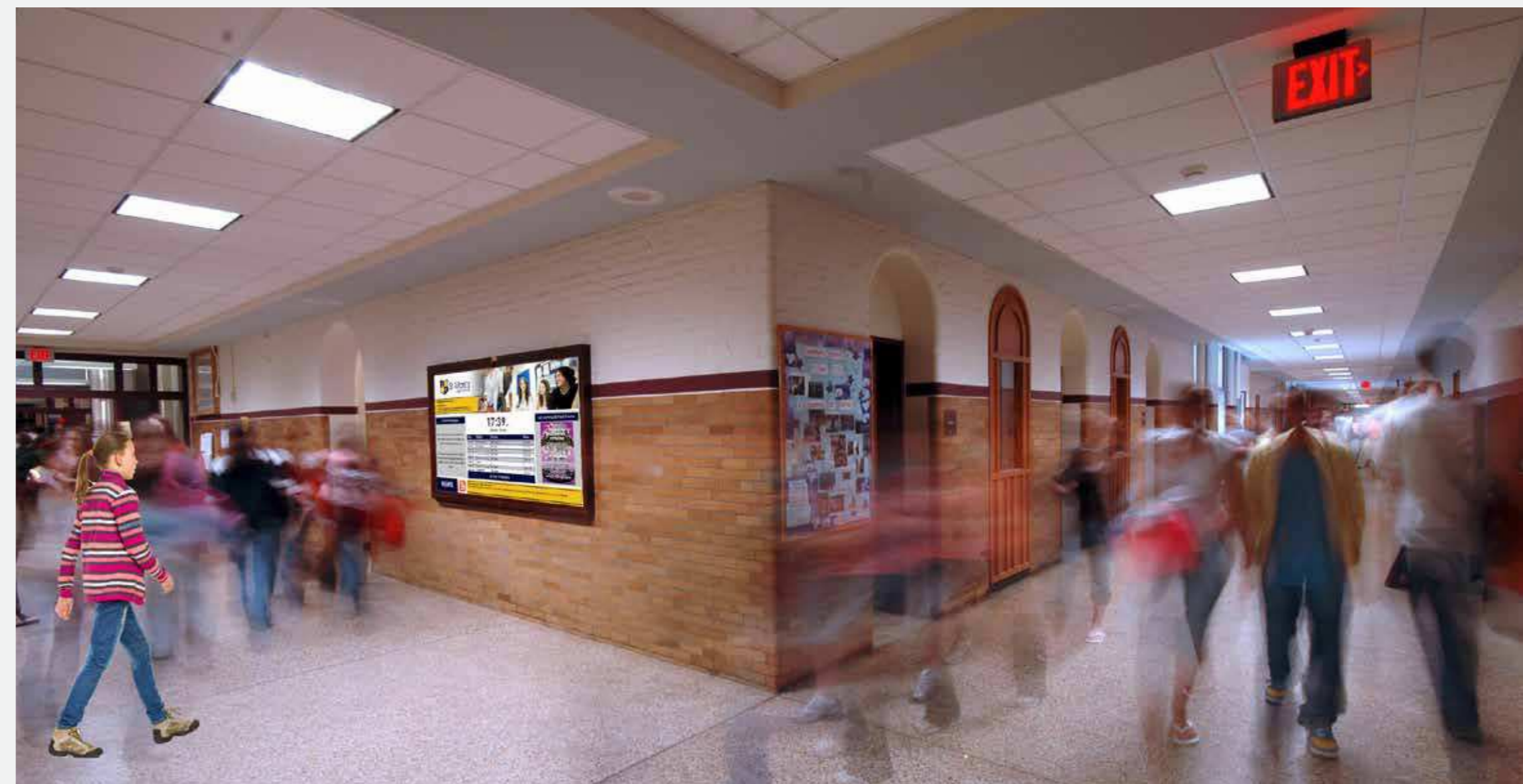
REMOTE UPDATING Update the "pupil of the week" quickly and easily via the built-in web server from any browser on the network

TOUCH SCREEN COMPATIBLE TouchIT Digital Signage is ideal for use with Touch Screens to create a wayfinder application.

UNLIMITED ZONES allow you to create signage with as much content as you need, anywhere on the screen

RESOLUTION INDEPENDENT - use any screens you have for your signage

Make Your Signage Stand Out in a Crowd



MANUAL HEIGHT ADJUSTABLE STAND

Our Mobile Stand is specifically designed for the TouchIT LED range of interactive displays and provides a mobile mounting option. The stand is manually height adjustable with five fixed positions.



Suitable for use with all sizes of LED.
Part Code - MOBWMK

ELECTRIC HEIGHT ADJUSTABLE STAND

The MotoWMKII is able to raise up to 150kgs (330lbs) 700mm (27.5") at the touch of a button and is suitable for use with the entire range of LED - 32" to 84".



Suitable for use with all sizes of LED.
Part Code - MOTOWMKII

WALL MOUNTS

Our wall mounts are specifically designed to attach the LED to a wall. Our wall mounts hold the units firmly in place. (Please be aware that other mounts may not be rated for the weight or specific use with our products.)

Part Code - WMK-32 | WMK-42-55 | WMK-65-84



TABLE TOP STANDS

Our table top stands are specifically designed for the LED range so they can be used on a table or desk. The TouchIT Table Top Stand is ideal for displaying the TouchIT LED on top of a cabinet or indeed a table or shelf where wall mounting is not an option.

Part Code - DTS-42-46-55 | DTS-84 DTS-65-70

Part Codes

Interactive LEDs

0608641030075	32" TouchIT LED (Full HD)
0608641029703	42" TouchIT LED (Full HD)
0608641029710	46" TouchIT LED (Full HD)
0608641029727	55" TouchIT LED (Full HD)
0608641029734	65" TouchIT LED (Full HD)
0608641029741	70" TouchIT LED (Full HD)
0608641030211	65" 4K TouchIT LED (4K UHD)
0608641030273	75" 4K TouchIT LED (4K UHD)
0608641030297	80" TouchIT LED (Full HD)
0608641030198	84" 4K TouchIT LED (4K UHD)

Interactive LEDs with Integrated PC

0608641029765	42" TouchIT LED (Full HD & PC)
0608641029772	46" TouchIT LED (Full HD & PC)
0608641029789	55" TouchIT LED (Full HD & PC)
0608641029796	65" TouchIT LED (Full HD & PC)
0608641029802	70" TouchIT LED (Full HD & PC)
0608641030259	65" 4K TouchIT LED (4K UHD & PC)
0608641030280	75" 4K TouchIT LED (4K UHD & PC)
0608641030303	80" TouchIT LED (Full HD & PC)
0608641030235	84" 4K TouchIT LED (4K UHD & PC)

Additional 2 Year Warranty

0608641030396	5 Year LED Warranty
---------------	---------------------

TouchIT Fusion

0608641028454	55" 32pt Touch
---------------	----------------

Digital Signage Software

0608641029999	TouchIT Digital Signage
---------------	-------------------------

Stands & Mounts

0608641029178	32" Wall Mount
0608641029147	42" - 55" Wall Mount
0608641029154	65" - 84" Wall Mount
0608641029185	42" - 55" Desk Top Stand
0608641029192	65" - 70" Desk Top Stand
0608641029208	84" Desk Top Stand
0608641029376	Manual LED Stand
0608641029215	Electric LED Stand

Installation & Training

0608641030136	On Site Install for LED
0608641030433	1 Day Training for LED

TouchIT Software

0608641030013	Notes Presenter
0608641030020	Notes 10
0608641030037	Notes 20
0608641030044	Notes 40
0608641030051	Notes 40+
0608641030402	Oktopus
0608641030419	Oktopus 40
0608641030426	Oktopus Site License

If you are unsure about any of the part codes for the products or would like more information, please call us on +1 248 764 1084 or email sales@touchittechnologies.com

Support & Professional Development

Support and Professional Development are very important at TouchIT Technologies. We offer a number of different ways that we can support you with our products from On Site Technical Support to Online Training. Here are a few key examples of what we offer.

3 Year On Site Supprt comes as standard for all Interactive LEDs. If there is a problem, we'll send out the parts and a technician to fix them at your school. (Continental USA, Canada & Australia)



At www.touchittechnologies.com we have online resources including:

- | | |
|----------------------|------------------------------|
| Video Tutorials | Online Chat |
| FAQs | Online Training |
| PDF Guides | Online Support Ticket System |
| Demonstration Videos | |

If you need Technical Support on our products, please either dial 248 764 1084 and select the support option, or email support@touchittechnologies.com

Full e-Learning Online Training Platform at www.touchittechnologies.com



In-person Training by one of our Education Specialists



WEBINAR



Training Webinars to get to know how to use the Interactive LEDs and Software

Model Name	TouchIT 32" LED	TouchIT 42" LED	TouchIT 46" LED	TouchIT 55" LED	TouchIT 65" LED	TouchIT 70" LED	TouchIT 80" LED	TouchIT 4K 65" LED	TouchIT 4k 75" LED	TouchIT 4K 84" LED	55" Fusion 32 Point	
Part Code	0608641030075	0608641029703	0608641029710	0608641029727	0608641029734	0608641029741	0608641030297	0608641030211	0608641030273	0608641030198	0608641028454	
Panel Size (Dia.)	32 inch	42inch	46 inch	55 inch	65 inch	70 inch	80 inch	65 inch	75 inch	84 inch	55 inch	
Resolution	1920 x 1080							3840 x 2160			1920 x 1080	
Brightness	350 cd/m2	400 cd/m2	500 cd/m2	400 cd/m2	350 cd/m2	350 cd/m2	350 cd/m2	350 cd/m2	450 cd/m2	350 cd/m2	400 cd/m2	
Contrast	3000:1	4000:1	4000:1	4000:1	4000:1	4000:1	5000:1	4000:1	4000:1	1600:1	4000:1	
Viewing Angle	178°/178°							178°/178°			178°/178°	
Response Time	8ms	6.5 ms	6.5 ms	6.5 ms	5.5 ms	4 ms	4 ms	6.5 ms	8 ms	5 ms	6.5 ms	
Backlight	LED							LED			LED	
Backlight Life	50,000 Hours	30,000 Hours	50,000 Hours	30,000 Hours	30,000 Hours	60,000 Hours	50,000 Hours	30,000 Hours	50,000 Hours	50,000 Hours	60,000 Hours	
Operating Temp.	0-50°C							0-50°C			0-50°C	
Operating Humid.	10-90% RH							10-90% RH			10-90% RH	
Input Voltage	AC 100-240V, 50/60Hz							AC 100-240V, 50/60Hz			AC 100-240V, 50/60Hz	
Power Consump.	< 65 Watts	< 70 Watts	< 120 Watts	< 135 Watts	< 160 Watts	< 195 Watts	< 280 Watts	< 220 Watts	< 370 Watts	< 430 Watts	< 135 Watts	
Standby Power	< 0.5 Watts	< 0.5 Watts	< 0.5 Watts	< 0.5 Watts	< 0.5 Watts	< 0.5 Watts	< 0.8 Watts	< 0.5 Watts	< 0.5 Watts	< 0.75 Watts	< 0.5 Watts	
Input Connector	VGA x1, HDMI x3, USB for Media x2, USB for Touch x2, Audio in x1							VGA x1, DVI x1, HDMI (UHD) x1, HDMI (FHD) x2, Display Port x1, Audio in x1, USB for Media x1, USB for Touch x1			VGA x1, DVI x1, HDMI x2, Audio in x1, mini-Din x1, USB for Media x2, USB for Touch x1	
Output Connector	VGA x1, HDMI x1, Audio out x1							N/A			VGA x1, Audio out x1	
Screen Control	RS-232 & Remote Handset							RS-232 & Remote Handset			RS-485 & Remote Handset	
Ambient Detection	Auto Ambient Light Detection							Auto Ambient Light Detection			Auto Ambient Light Detection	
Touch Technology	SLW 10-Point Touch							SLW 10-Point Touch			SLW 32-Point Touch	
AG Tempered Glass	4mm				5mm			5mm			4mm	
Speakers	10W x2							10W x2			10W x2	
VESA	200 x 200	440 x 300	400 x 440	440 x 400	440 x 400	440 x 500	400 x 400	400 x 400	400 x 400	400 x 400	440 x 400	
Unit Dimension (WxHxD) mm	798.54 x 498.35 x 138.3	1028.74 x 631.21 x 109.3	1114.64 x 678.55 x 113.6	1305.94 x 786.95 x 110.3	1524.24 x 909.55 x 114.8	1633.74 x 976.75 x 115.8	1866.44 x 1098.75 x 134.7	1524.24 x 909.55 x 121	1742 x 1032 x 134.7	1960.54 x 1156.75 x 118.1	1300 x 772 x 104.2 (Monitor) 1130 x 820 x 920 (Trolley)	
Unit Dimension Inches	31.38" x 19.58" x 5.45"	40.42" x 24.80" x 4.29"	43.80" x 26.66" x 4.46"	51.32" x 30.92" x 4.33"	59.90" x 35.74" x 4.51"	64.20" x 38.38" x 4.55"	74.38" x 43.26" x 5.3"	59.90" x 35.74" x 4.75"	68.46" x 40.55" x 5.28"	76.46" x 45.46" x 4.64"	51.09" x 30.33" x 4.09"	
Net Weight KG	23.2 KG	28 KG	30.4 KG	47.2 KG	58.65 KG	86.10 KG	92.6 KG	58.65 KG	87 KG	103.56 KG	42.2 KG (Monitor)	
Net Weight LBS	51.15 LBS	61.73 LBS	67.02 LBS	104.06 LBS	129.30 LBS	189.82 LBS	204.15 LBS	129.30 LBS	191.4 LBS	228.31 LBS	93.04 LBS (Monitor) 158.4lbs (Trolley)	
Optional PC	N/A	Intel i5 + 8G RAM + 500G HDD							Intel i5 + 8G RAM + 500G HDD			Intel i5 + 8G RAM + 500G HDD
Pro (with PC) Part Code	N/A	0608641029765	0608641029772	0608641029789	0608641029796	0608641029802	0608641030303	0608641030259	0608641030280	0608641030235	Included	
Packaged Dimensions (mm)	934 x 322 x 710	1152 x 238 x 783	1243 x 238 x 841	1426 x 238 x 948	1629 x 252 x 1036	1745 x 238 x 1120	2100 x 290 x 1386	1629 x 252 x 1036	1995 x 292 x 1381	2120 x 310 x 1430	1440 x 250 x 1070 (Monitor) 1130 x 820 x 920 (Trolley)	
(inches)	36.77" x 12.67" x 27.95"	45.35" x 9.37" x 30.82"	48.94" x 9.37" x 33.11"	56.14" x 9.37" x 37.32"	64.13" x 9.92" x 40.78"	68.70" x 9.37" x 44.09"	82.68" x 11.7" x 54.6"	64.13" x 9.92" x 40.78"	78.58" x 11.50" x 54.40"	83.46" x 12.20" x 56.30"	56.69"x9.84"x42.04" (Monitor) 44.48"x32.28"x36.22"(Trolley)	
Packaged Weight (KG)	26.2kg	39kg	43.25kg	50.15kg	76 kg	94.6 kg	107 kg	76 kg	106 kg	116.2 kg	47kg (Monitor) 83kg (Trolley)	
(lbs)	57.64lbs	85.8lbs	95.15 lbs	110.33 lbs	167.2 lbs	208.12 lbs	235.4 lbs	167.2 lbs	233.2 lbs	255.64 lbs	121lbs (Monitor) 182.6 LBS (Trolley)	



Touchboards

205 Westwood Ave, Long Branch, NJ 07740
Phone: 866-94 BOARDS (26273) / (732)-222-1511
Fax: (732)-222-7088 | E-mail: sales@touchboards.com

TouchIT Technologies
2051 Villa, Suite 104
Birmingham, MI 48009
USA
sales@touchittechnologies.com

USA - 248 764 1084
UK - 0208 819 9641
AUSTRALIA - 0290 370 130
ASIA PAC Sales +85 258 083 087

Who are TouchIT Technologies?

TouchIT Technologies was founded in 2008 and began manufacturing Interactive Whiteboards. Today, we are a US company that focuses almost exclusively on the manufacturing of Interactive LED's. We sell products to over 30 countries worldwide to a variety of vertical markets and have offices not only in the US but also in Europe and Asia.