

# SCIENSCOPE

DIGITAL INSPECTION CATALOG 2016



**MAC3** Egro-Inspection

**MACRO** with Versa-Cam

**SmartCam2** Desktop Measurement

**MZ7A** Micro Inspection

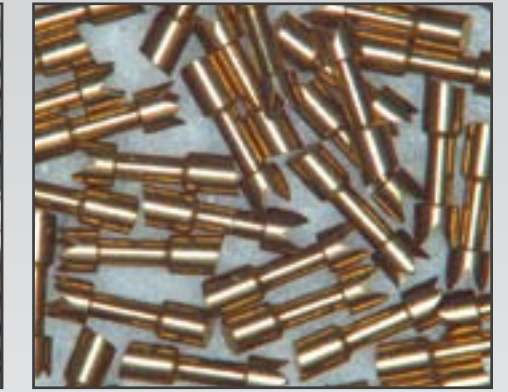
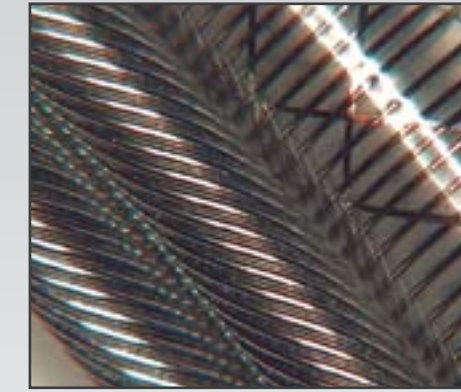
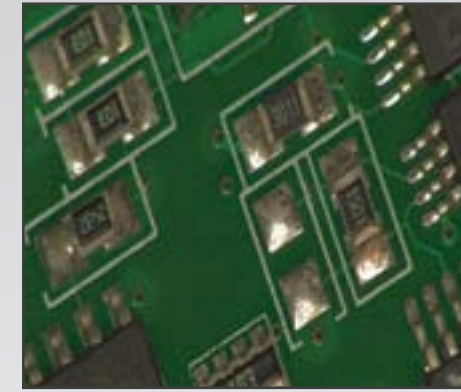
**Overview**

The new MAC3 Ergonomic Digital Inspection system is the next step in the evolution of our powerful line of digital/video inspection systems. The revolutionary MAC3 series from Scioscope merges the latest in HD video technology with the clearest macro video optics to provide an easy to use ergonomic inspection system for your most fatiguing and difficult to see quality processes.



**Features**

- Integrated operating system
- Image and Video capture to SD or via USB
- Split-Screen live image/captured image comparison
- Image gallery and image/video preview and playback
- Vertical and horizontal line generators with 8 presets
- Onscreen mouse-controlled video settings
- Digital image sharpening and frame averaging
- Auto White balance
- Auto shutter and brightness
- 12" LCD monitor
- 2 USB 2.0 ports



**Electronics**

Capable of a remarkably large field of view or IPC spec magnification (Up to 60x) the MAC3 system makes electronics inspection a more comfortable and efficient process. If you need to document your work, images or video can be captured with one click of the mouse and stored to a removable SD card. You can also rework or repair in comfort with an ergonomically placed monitor (No eyepieces!) and easy to reach zoom and focus controls.

**Medical Devices**

Whether you are inspecting catheters, stents, pacemakers or surgical implements, medical devices require 100% inspection with the utmost possible scrutiny. Inspect, document, and compare with ease and confidence. Use the integrated side-by-side capture to live image comparison feature to be certain that what you are seeing is a defect.

**Precision Machining**

Precision machined parts are used in a wide range of industries, from aerospace and automotive applications, to watchmaking and traditional manufacturing. Clear and crisp live video with simplicity and ergonomics in mind makes the MAC3 system and camera an irreplaceable instrument to assist in any visual inspection task.



Select from a variety of stands and lighting for the system that best fits your needs. See preconfigured packages on page 18.

MAC3 HD w/ Articulating Arm

MAC3 HD w/ Post Stand Option



CMOS



MAC3 System Specifications and Optical Data

Optics	Macro Zoom	Working Distance	MAG	FOV
Magnification	7.75x to 60x (Variable depending on WD)	4.5" WD	High 60x	4.75mm
FOV	33.75mm to 4.75mm (Variable depending on WD)	7.75" WD	High 30x	8.8mm
Working Distance	4.5" to 12"	7.75" WD	Low 10x	25mm
Resolution	1080p HD @ 60fps	8" WD	High 28x	9mm
Sensor Type	½.5" CMOS	8" WD	Low 9.75x	25.5mm
Camera Mount	C-Mount	9" WD	High 24.5x	10.75mm
Focus control	Manual	9" WD	Low 8.75x	30mm
Iris Control	Manual	10" WD	High 21.5x	11.8mm
		10" WD	Low 7.75x	33.75mm





### Overview

The New MAC3 Camera (Part number: CC-CMC-12H) from ScienScope is an all-in-one camera with integrated monitor and software. The MAC3 Camera can be used as a “live image” HD (1080p) camera or as a USB 2.0 camera with USB cable connected to any computer or Windows Tablet. **The camera can be connected to any microscope or optical system with a C mount so you can instantly upgrade your system.** With monitor mounted directly to the camera limited work space is never a problem and your ergonomics will improve as well.



CMOS



#### HD / HDMI Mode Features

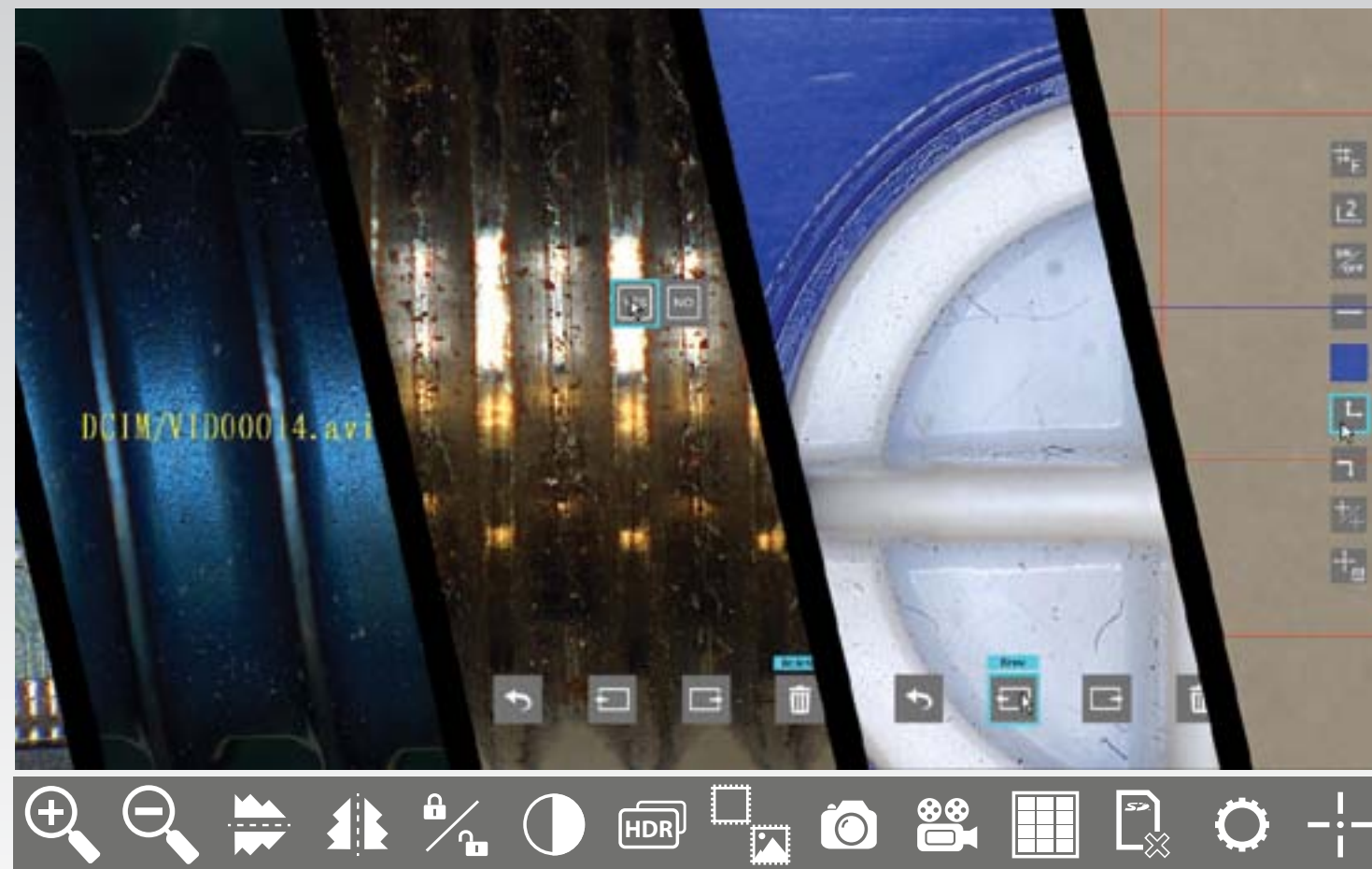
- 1080p (1920 x 1080)HD image @60fps
- Onscreen control bar and setting menu
- Image and video capture to SD card
- Split-screen live image/ Captured image comparison (Picture in Picture)
- Image and video gallery/ Image and video review
- Vertical and horizontal line generator
- Save line generator configurations
- Wireless mouse support and control

#### USB 2.0 Mode Features

- 2 Mega-pixel resolution
- Image and Video Capture with Windows 8 or 10 camera app
- Email, Save, or Print from software
- Image and video capture with included software
- Annotation and drawing tools on live or captured images
- Send images directly to local file location or network
- Time and date stamp images
- Includes DirectShow drivers
- Upgrade software with FOV measurement tools

### MAC3 Camera (CC-CMC-12H) | Specifications

Image sensor	1/2.86 Inch Panasonic FULL HD 2.0 Megapixel	Freeze image	Yes
Effective pixels	1920 x 1080	HDR	Yes
Frame rate	60fps	Edge enhancements /Sharpening	Yes
Definition	More than 1200lines (the highest level)	SD card slot	Support up to 32GB SD card
Housing	Aluminum/Plastic	Cross hair	Multi-color, small or large
White balance	Automatic/Manual/Continuous	Horizontal/Vertical Lines	Multi-color, two lines for each (Position can be adjusted)
Brightness control	Automatic/Manual/Continuous	Noise Reduction	Support
Color	R/G/B adjustable	HDMI	1080p
Edge enhancement:	Yes	USB	USB 2.0
OSD:	Yes, in HDMI mode		



#### Intergrated Software With Convieniently Located Control Bar

- |                                       |                                              |
|---------------------------------------|----------------------------------------------|
| Digital Zoom / Increase Magnification | Side-by-Side Live/Captured Image Comparison  |
| Digital Zoom / Decrease Magnification | Still Image Capture                          |
| Flip Image Horizontal                 | Video Capture                                |
| Mirror Image Vertical                 | Gallery / Image Preview / SD Card Management |
| Freeze Image / Unfreeze Image Toggle  | Clear SD Card and SD Format                  |
| Color to Black and White Toggle       | Settings Menu                                |
| High Dynamic Range Toggle             | Integrated Video Caliper and Cross-hair      |

#### USB Software

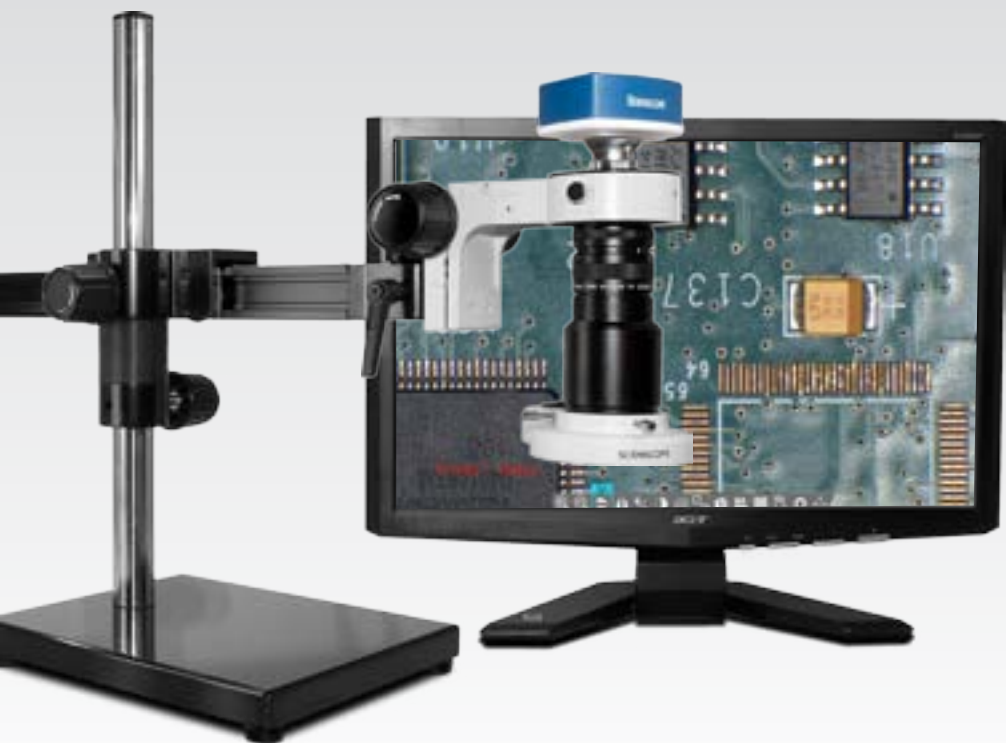
With the included software you can use your USB port to connect your camera directly to computer for large volumes of image capture. The software is the perfect solution for adding a simple and easy way to capture, annotate and draw on images. Once the software is installed you can also download field of view measurement tools for quick and easy measurement capability.





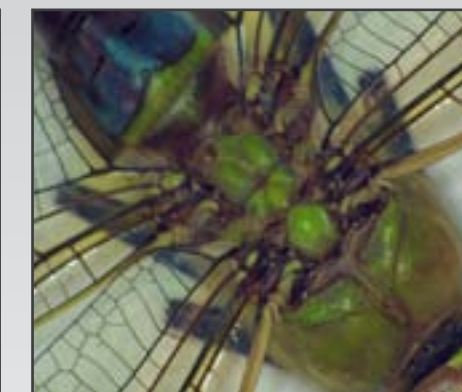
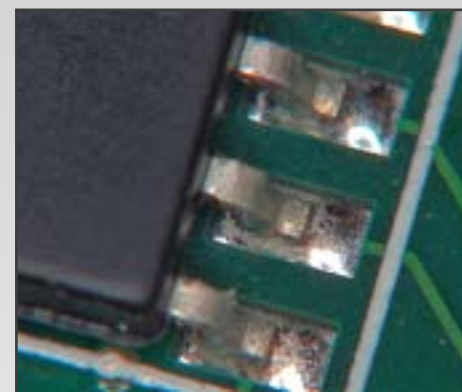
### Overview

Our industry standard Macro video/digital inspection systems now feature the powerful Versa-Cam. The Versa-Cam can be used as a "live image" HD (1080p) camera connected to a monitor using an HDMI cable or as a USB 2.0 camera with USB cable connected to any computer or Windows Tablet. **Now the choice between live HD monitor inspection and high resolution USB camera capture and annotation is made at the camera...not between cameras.**



### Features

- Integrated operating system
- Image and Video capture to SD or via USB
- Split-Screen live image/captured image comparison
- Image gallery and image/video preview and playback
- Vertical and horizontal line generators with 8 presets
- Onscreen mouse-controlled video settings
- Digital image sharpening and frame averaging
- Auto White balance
- Auto shutter and brightness
- 23" LCD monitor
- 1 USB 2.0 ports



### Electronics

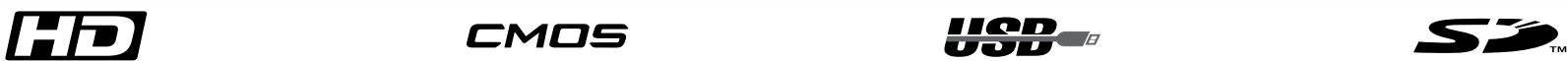
Capable of a remarkably large field of view or higher magnification (Up to 90x) the Macro Systems with Versa-CAM makes electronics inspection a more comfortable and efficient process. If you need to document your work, images or video can be captured with one click of the mouse and stored to a removable SD card. For high volumes of documentation use the USB port to capture images with your computer.

### Medical Devices

Whether you are inspecting catheters, stents, pacemakers or surgical implements, medical devices require 100% inspection with the utmost possible scrutiny. Inspect, document, and compare with ease and confidence. Use the integrated side-by-side capture to live image comparison feature to be certain that what you are seeing is a defect.

### Macro Documentation

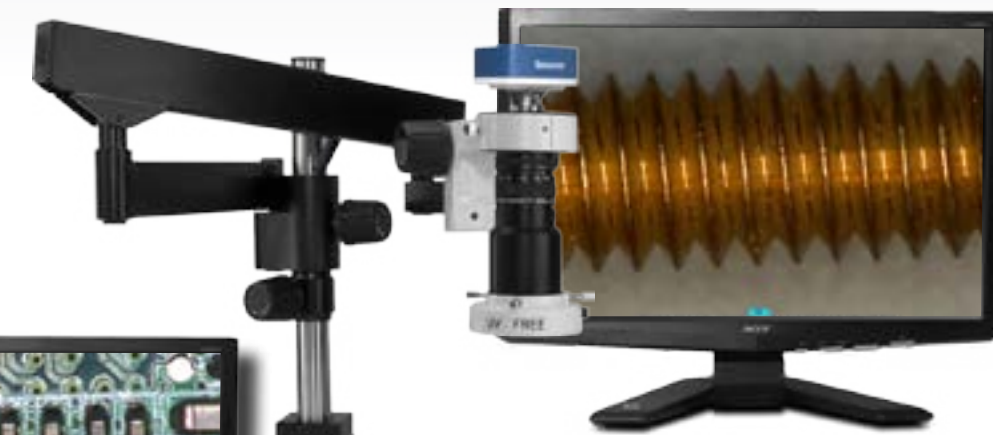
Macro photography is extreme close-up photography, usually of very small subjects, in which the size of the subject in the photograph is greater than life size. The Macro Systems with Versa-CAM makes macro biological or industrial image capture and observation simple. With easy to control optics, lighting, and camera functions macro photography for education or industry is a snap.



### MAC3 System Specifications and Optical Data

Optics	Macro Zoom	Working Distance	MAG	FOV	
Magnification	7.75x to 60x (Variable depending on WD)	5.5" WD	High	90x	5mm
FOV	33.75mm to 4.75mm (Variable depending on WD)		Low	20x	23mm
Working Distance	4.5" to 12"	7" WD	High	64x	8mm
Resolution	1080p HD @ 60fps		Low	13x	34mm
Sensor Type	½.5" CMOS	8" WD	High	55x	9.5mm
Camera Mount	C-Mount		Low	11.5x	43mm
Focus control	Manual	9" WD	High	47x	10.5mm
Iris Control	Manual		Low	10x	48mm
		10" WD	High	42x	12mm
			Low	9x	54mm

### MAC3 HD w/ Post Stand Option



### MAC3 HD w/ Articulating Arm

Select from a variety of stands and lighting for the system that best fits your needs. See preconfigured packages on page 19.





### Overview

The new **Versa-Cam** from Scienscope is the next step in the evolution of our powerful line of digital HD cameras for microscopy. The Versa-Cam can be used as a “live image” **HD (1080p)** camera connected to a monitor using an HDMI cable or as a USB 2.0 camera with USB cable connected to any computer or Windows Tablet.

Now the choice between live HD monitor inspection and high resolution USB camera capture and annotation is made at the camera...not between cameras.



**CMOS**

**HDMI™**

**USB**

**SD™**

#### HD / HDMI Mode Features

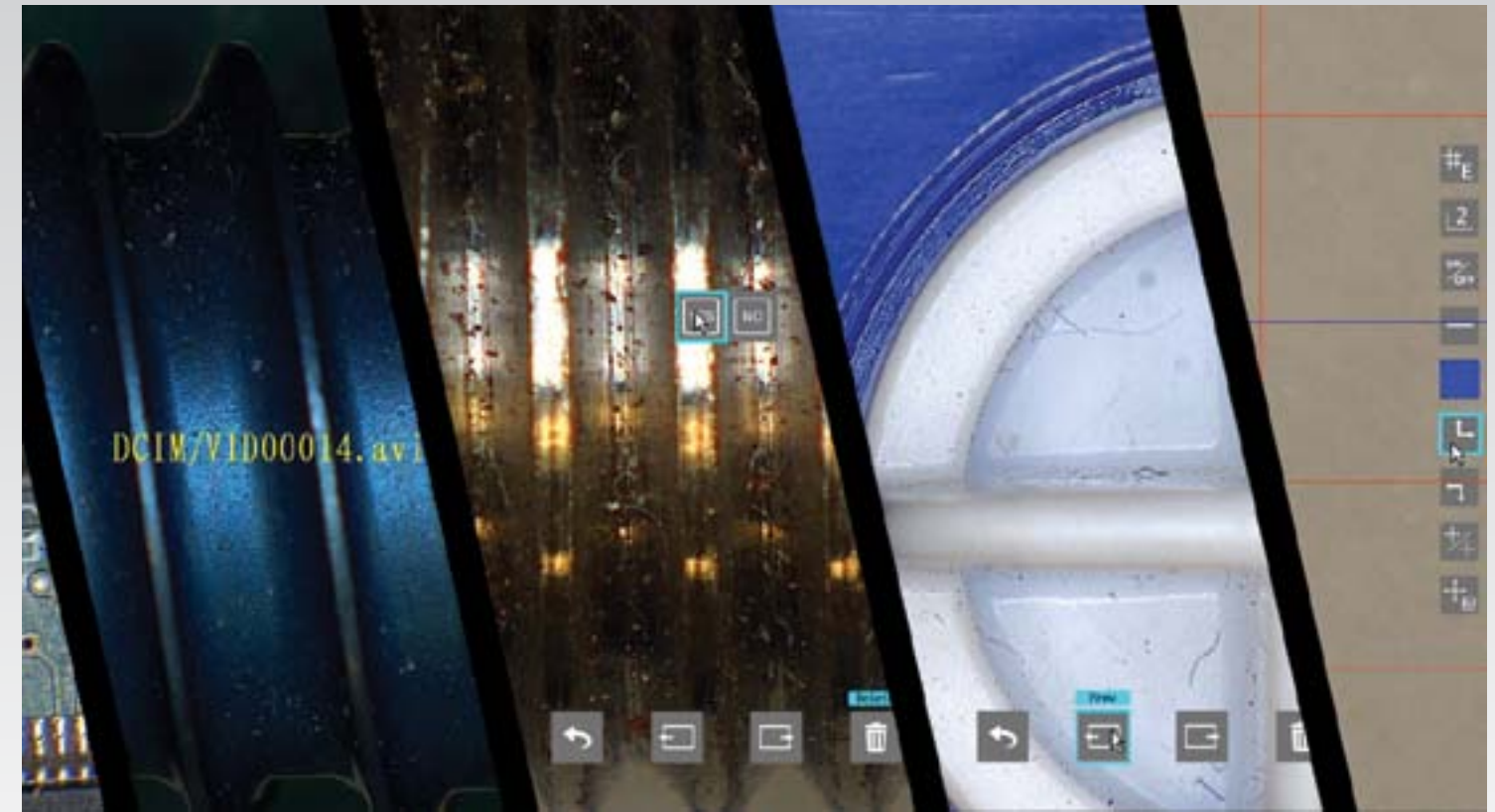
- 1080p (1920 x 1080)HD image @60fps
- Onscreen control bar and setting menu
- Image and video capture to SD card
- Split-screen live image/ Captured image comparison (Picture in Picture)
- Image and video gallery/ Image and video review
- Vertical and horizontal line generator
- Save line generator configurations
- Wireless mouse support and control

#### USB 2.0 Mode Features

- 2 Mega-pixel resolution
- Image and Video Capture with Windows 8 or 10 camera app
- Email, Save, or Print from software
- Image and video capture with included software
- Annotation and drawing tools on live or captured images
- Send images directly to local file location or network
- Time and date stamp images
- Includes DirectShow drivers
- Upgrade software with FOV measurement tools

### Versa-Cam (CC-HDMI-CD2) | Specifications

Image sensor	1/2.86 Inch Panasonic FULL HD 2.0 Megapixel	Freeze image	Yes
Effective pixels	1920 x 1080	HDR	Yes
Frame rate	60fps	Edge enhancements /Sharpening	Yes
Definition	More than 1200lines (the highest level)	SD card slot	Support up to 32GB SD card
Housing	Aluminum/Plastic	Cross hair	Multi-color, small or large
White balance	Automatic/Manual/Continuous	Horizontal/Vertical Lines	Multi-color, two lines for each (Position can be adjusted)
Brightness control	Automatic/Manual/Continuous	Noise Reduction	Support
Color	R/G/B adjustable	HDMI	1080p
Edge enhancement:	Yes	USB	USB 2.0
OSD:	Yes, in HDMI mode		



#### Intergrated Software With Convieniently Located Control Bar

- |  |                                       |  |                                              |
|--|---------------------------------------|--|----------------------------------------------|
|  | Digital Zoom / Increase Magnification |  | Side-by-Side Live/Captured Image Comparison  |
|  | Digital Zoom / Decrease Magnification |  | Still Image Capture                          |
|  | Flip Image Horizontal                 |  | Video Capture                                |
|  | Mirror Image Vertical                 |  | Gallery / Image Preview / SD Card Management |
|  | Freeze Image / Unfreeze Image Toggle  |  | Clear SD Card and SD Format                  |
|  | Color to Black and White Toggle       |  | Settings Menu                                |
|  | High Dynamic Range Toggle             |  | Integrated Video Caliper and Crosshair       |

#### USB Software

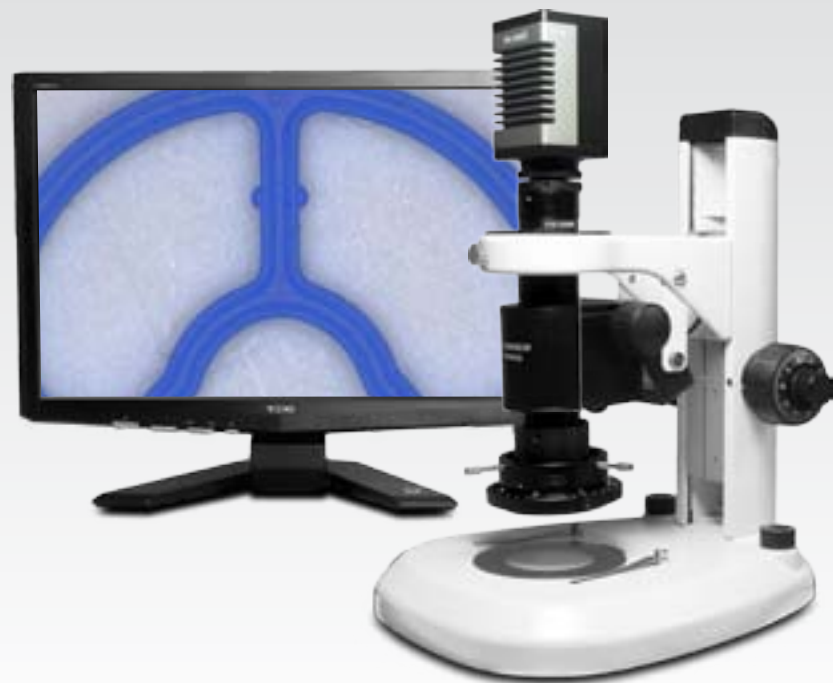
With the included software you can use your USB port to connect your camera directly to computer for large volumes of image capture. The software is the perfect solution for adding a simple and easy way to capture, annotate and draw on images. Once the software is installed you can also download field of view measurement tools for quick and easy measurement capability.





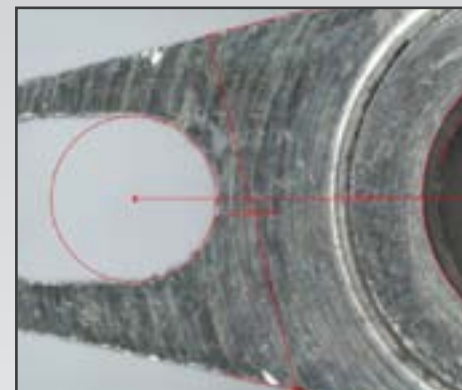
**Overview**

The SmartCam 2 is a camera with an integrated computer running a lite version of Linux with a field of view measurement suite built-in! Now you can inspect and measure right on your desktop without the use of a computer. All of your measurements and image capture take place within the camera itself with the ability to capture and export your measurement data directly to the included SD card. The systems also include the new horizontal zoom control Micro-Zoom lens with calibration feedback to the camera so changing between preset calibrations is just the twist of a knob.



**Features**

- The SmartCam 2 is an all-in-one HD camera, Computer, and Field of View Software Suite.
- Includes 9 FOV Measurement tools, Diameter, Radius, Circumference, Length, Angles, Area, Center to Center, Arc, and Average
- System measurement resolution at 140x up to +/- 0.005"
- Capture images and Record HD Video to included SD card
- Export measurement data to included SD card
- Video enhancement and control tools
- Integrated digital gaging calipers
- Easy-to-use, intuitive software that is mouse and keyboard controlled
- Your choice of dual arm boom stand or lab style track stand with built-in transmitted and reflected LED light
- Choice of diffused LED ring light or polarized LED ring light



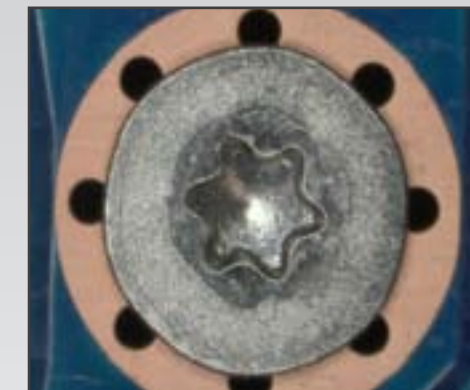
**Measure**

Measure your critical parts with ease and without a computer using the systems integrated field of view measurement software. With nine powerful and simple tools built in to the camera itself you will be able to quickly verify that your manufacturing process can move along without the delays of more complicated systems. The SmartCam 2 makes It simple...set up, calibrate, and measure.



**Inspection and Documentation**

SmartCam 2 systems include powerful Micro or Macro zoom optics. Inspection and image/video capture of tiny parts and features using the standard Micro optics (Up to 1200x with optional accessories) produces stunning 1080p images with impressive detail. Never miss a microscopic defect and capture small issues before they become big problems.



**Endless Applications**

SmartCam 2 systems are used in

- Medical devices
- Automotive
- Defense
- Electronics and contract
- Semiconductor
- Machining and micro machining
- Materials analysis
- Plastics
- Aerospace
- Micro-stamping



CMOS



**SmartCam 2 System Specifications**

Optics	Micro or Macro Zoom
Magnification	32x to 203x
System measurement Resolution	@ 140x up to +/- 0.005"
Working Distance	3.8"
Resolution	1080p HD @ 60fps
Storage	8GB SD
Camera Mount	C-Mount
Calibration Method	6 Detented presets
Ports	2 USB 2.0, SD, and HDMI out

**All Systems Include**

- HD SmartCam 2 with integrated software
- Micro lens and 0.5x coupler or Macro Zoom lens
- Adjustable LED ring light
- 23" Color HD LCD monitor
- Glass calibration master (1mm and 0.1mm targets)
- 8GB SD card, Mouse, and HDMI cable
- Choice of dual illuminated track stand or dual arm boom stand.



Select from a variety of stands and lighting for the system that best fits your needs. See preconfigured packages on pages 20 and 21.





### Overview

The SmartCam 2 is the next generation of all-in-one Smart Camera technology. Now with a more user friendly graphical interface performing manual field of view measurements is made even more simple...and all without the use of a computer. The camera features a lite version of Linux that runs an inspection and capture interface and a simple calibration and measurement interface. Preconfigured systems are available (See pages 20 and 21) **or you can connect the camera to any C or CS mount optical system and transform it into a powerful measurement tool.**



CMOS

HDMI™

USB

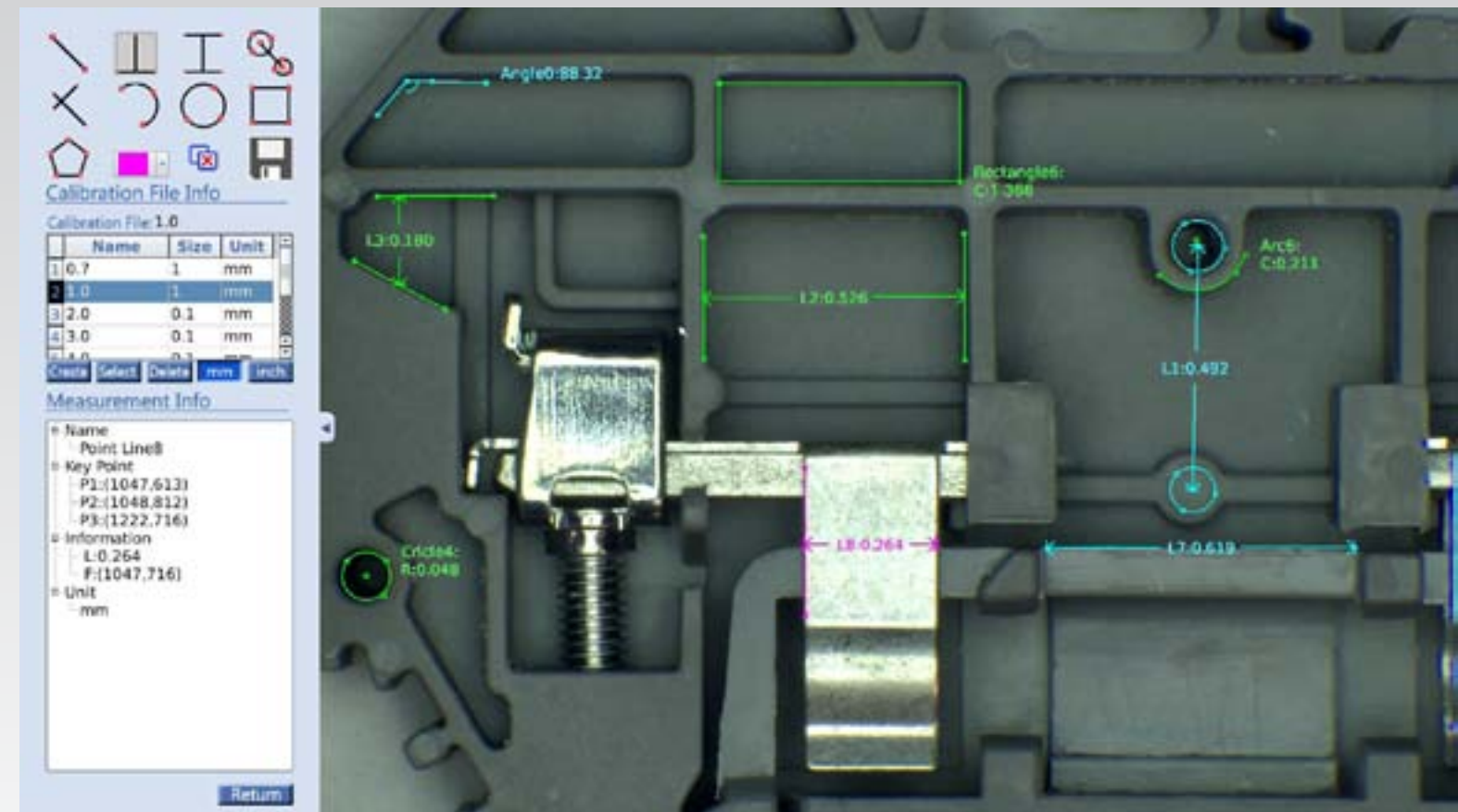


### Features

- Includes 9 FOV Measurement tools, Diameter, Radius, Circumference, Length, Angles, Area, Center to Center, Arc, Average and Width.
- System measurement resolution at 140x up to +/- 0.005"
- Easy calibration procedure
- English and metric units
- Export measurement data to included SD card
- Capture images with embedded measurement data and tools
- Up to 20 calibration files
- Integrated digital gaging calipers
- Adjustable crosshairs with edge detection and skew
- 1080p (1920 x 1080) HD @ 60fps
- Digital image enhancement
- Capture HD images and Record HD Video to included SD card or USB stick
- Video enhancement and control tools
- Easy-to-use, intuitive software that is mouse and keyboard controlled
- Image and video preview gallery
- Onscreen memory card eject button
- Connects to any C or CS mount coupler

### Versa-Cam (CC-HDMI-CD2) | Specifications

Image sensor	<b>1/2.86 Inch Panasonic FULL HD 2.0 Megapixel</b>	Freeze image	<b>Yes</b>
Effective pixels	<b>1920 x 1080</b>	HDR	<b>Yes</b>
Frame rate	<b>60fps</b>	Edge enhancements /Sharpening	<b>Yes</b>
Definition	<b>More than 1200lines (the highest level)</b>	SD card slot	<b>Support up to 32GB SD card</b>
Housing	<b>Aluminum/Plastic</b>	Cross hair	<b>Multi-color, small or large</b>
White balance	<b>Automatic/Manual/Continuous</b>	Horizontal/Vertical Lines	<b>Multi-color, two lines for each (Position can be adjusted)</b>
Brightness control	<b>Automatic/Manual/Continuous</b>		
Color	<b>R/G/B adjustable</b>	Noise Reduction	<b>Support</b>
Edge enhancement:	<b>Yes</b>	HDMI	<b>1080p</b>
OSD:	<b>Yes, in HDMI mode</b>	USB	<b>USB 2.0</b>



### Inspection Controls

Use the newly upgraded operating system and digital image acquisition screen to capture HD images and video with the click of a mouse. The user can also control all aspects of the image in one conveniently located menu. The ability to set your exposure, saturation, image enhancement, and auto white balance can be changed to meet your application. Use the image gallery to review and delete images saved to your SD card.



### Measurement Tools

The SmartCam 2 features all of the FOV measurement tools that stand-alone or add-on PC field of view measurement software includes. Now you can measure with ease and without some of the issues that a computer requirement can come with. Measure diameters, radius, circumference, distance, angles, arcs, widths, areas, and polygons within your camera and without a computer.

- Angle.** Find and measure an angle with four clicks.
- Arc.** Find and measure an arc with three clicks.
- Area.** Measure the X, Y, Diagonal and area with two clicks.
- Polygon.** Find the area of a polygon with infinite clicks.
- Circle.** Find the Diameter, circumference, and radius of a circle with three clicks.
- Average Width.** Find the average width of two non-parallel or parallel lines with four clicks.
- Perpendicular With Distance.** Find and measure the perpendicular distance from a point to a line.
- Point to Point, Line.** Measure a distance or line with two clicks.
- Center to Center.** Measure from the center of one circle to the center of another.



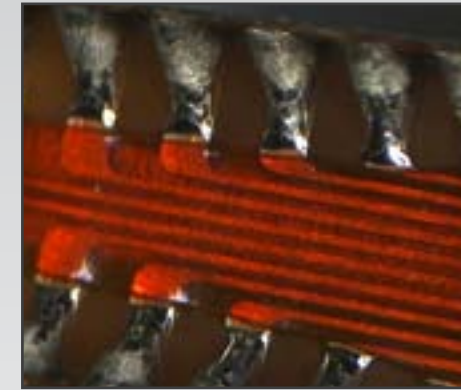
**Overview**

Our industry standard Micro video/digital inspection systems now feature the powerful Versa-Cam. The Versa-Cam can be used as a “live image” HD (1080p) camera connected to a monitor using an HDMI cable or as a USB 2.0 camera with USB cable connected to any computer or Windows Tablet. Now the choice between live HD monitor inspection and high resolution USB camera capture and annotation is made at the camera...not between cameras.



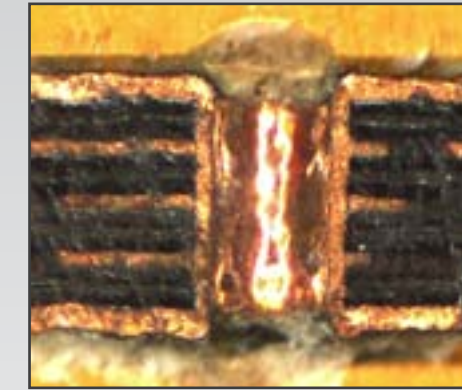
**Features**

- System Mag. up to 1200x
- Integrated operating system
- Image and Video capture to SD or via USB
- Split-Screen live image/captured image comparison
- Image gallery and image/video preview and playback
- Vertical and horizontal line generators with 8 presets
- Onscreen mouse-controlled video settings
- Digital image sharpening and frame averaging
- Auto White balance
- Auto shutter and brightness
- 23" LCD monitor
- 1 USB 2.0 ports



**High Magnification**

Capable of up to **1200x** the Micro-Zoom Systems with Versa-CAM makes detailed inspection a more comfortable and efficient process. If you need to document your work, images or video can be captured with one click of the mouse and stored to a removable SD card. For high volumes of documentation use the USB port to capture images with your computer.



**Optical Accessories**

The included Micro-Zoom lens offers a wide variety of optical accessories to suit your changing inspection requirements. All systems feature a detent zoom lens for repeatable magnification settings. Modular design allows you to interchange couplers and objective lenses to vary magnification, FOV, and working distance.



**Applications for Micro-Zoom**

- Medical devices
- Research and Development
- Surface analysis
- Forensics
- Semiconductor
- Micro machining
- Materials analysis
- Quality Control
- Aerospace



CMOS



**Micro-Zoom Optical Specifications**

Auxiliary Lens	Video Couplers				
	0.5X	0.67X	1X	2X	
0.25X	<b>Mag:</b>	6.1X - 39.3X	8.2X - 52.6X	12.2X - 78.6X	24.4X - 157.2X
	FOV (mm):	91.4 - 14.2	68.2-10.6	45.7-7.1	22.9-3.6
	WD (mm):	302	302	302	302
0.5X	<b>Mag:</b>	12.2X - 78.6X	16.4X - 105.3X	24.4X - 157.2X	48.9X - 314.3X
	FOV (mm):	45.7-7.1	34.1-5.3	22.8-3.6	11.4-1.7
	WD (mm):	176	176	176	176
0.75X	<b>Mag:</b>	18.3X - 117.9X	24.6X - 157.9X	36.7X - 235.7X	73.3X - 471.5X
	FOV (mm):	30.5-4.5	22.7-3.5	15.2-2.4	7.6-1.2
	WD (mm):	117	117	117	117
1X	<b>Mag:</b>	24.4X - 157.2X	32.8X - 210.6X	48.9X - 314.3X	97.8X - 628.7X
	FOV (mm):	22.8-3.6	17.1-2.7	11.4-1.8	57.-0.9
	WD (mm):	96	96	96	96
2X	<b>Mag:</b>	48.9X - 314.3X	65.5X - 421.2X	97.8X - 628.7X	195.6X - 1257.3X
	FOV (mm):	11.4-1.8	8.5-1.3	5.7-0.9	2.8-0.4
	WD (mm):	35	35	35	35

\*Optical specifications based on 23" monitor.



Contact us for special configurations.





**Overview**

Sciencescope's MZ7A Micro-Zoom lens is a modular zoom lens system that can be configured to fit nearly any application. Choose from a diverse assortment of video couplers, accessory optics, and a coaxial lighting option. A magnification range of 6x-1200x offers incredible versatility, high contrast images and vivid colors.

**Features**

- Zoom range 6x to 1200x
- Variable working distance
- High numerical aperture
- Coaxial lighting available

**Clarity and High Magnification**

Detented zoom for repeatable magnification settings and built-in internal focus module are perfect for FOV measurement applications as well as general inspection. Modular design allows you to interchange couplers and objective lenses to vary magnification, field of view, and working distance.



Coaxial Light Module



Flexible Configuration



Perfect for SmartCam2

**Overview**

The Zoom 7000 is a close-focusing macro video lens which is versatile and specifically designed to be used in applications where objects over 1" in diameter must be imaged. It offers unsurpassed clarity and parfocal zoom capabilities and is compatible with cameras 2/3" or smaller.

**Features**

- Up to 90x with 23" monitor
- Up to 54mm FOV at 10" WD
- High depth of field
- Manual iris



**Clarity and Wide Field of View**

The Navitar® Zoom 7000 is ideal for quality assurance, biomedical imaging, or assembly applications where an easy-to-view, sharp and true-to-life magnified image of your product can mean the difference between a shippable, top-quality end product and a costly manufacturing failure.



Largest Field of View



Double Magnification



Perfect for Versa-Cam

MZ7A Micro Zoom Video Specifications Based On 23" Monitor

Auxiliary Lens	Video Couplers			
	0.5X	0.67X	1X	2X
0.25X	<b>Mag:</b> 6.1X - 39.3X	8.2X - 52.6X	12.2X - 78.6X	24.4X - 157.2X
	FOV (mm): 91.4 - 14.2	68.2-10.6	45.7-7.1	22.9-3.6
	WD (mm): 302	302	302	302
0.5X	<b>Mag:</b> 12.2X - 78.6X	16.4X - 105.3X	24.4X - 157.2X	48.9X - 314.3X
	FOV (mm): 45.7-7.1	34.1-5.3	22.8-3.6	11.4-1.7
	WD (mm): 176	176	176	176
0.75X	<b>Mag:</b> 18.3X - 117.9X	24.6X - 157.9X	36.7X - 235.7X	73.3X - 471.5X
	FOV (mm): 30.5-4.5	22.7-3.5	15.2-2.4	7.6-1.2
	WD (mm): 117	117	117	117
1X	<b>Mag:</b> 24.4X - 157.2X	32.8X - 210.6X	48.9X - 314.3X	97.8X - 628.7X
	FOV (mm): 22.8-3.6	17.1-2.7	11.4-1.8	5.7-0.9
	WD (mm): 96	96	96	96
2X	<b>Mag:</b> 48.9X - 314.3X	65.5X - 421.2X	97.8X - 628.7X	195.6X - 1257.3X
	FOV (mm): 11.4-1.8	8.5-1.3	5.7-0.9	2.8-0.4
	WD (mm): 35	35	35	35

Macro Zoom Specifications Based On 12" Monitor

Working Distance	MAG	FOV
4.5" WD	High	60x
	Low	30x
7.75" WD	High	25mm
	Low	10x
8" WD	High	9mm
	Low	25.5mm
9" WD	High	10.75mm
	Low	8.75x
10" WD	High	11.8mm
	Low	7.75x

Macro Zoom Specifications Based On 23" Monitor

Working Distance	MAG	FOV
5.5" WD	High	5mm
	Low	20x
7" WD	High	8mm
	Low	13x
8" WD	High	9.5mm
	Low	11.5x
9" WD	High	10.5mm
	Low	10x
10" WD	High	12mm
	Low	9x



# MAC3 System Packages

**PK 5S** **DM** **E2D** **R3**  
Illumination Options  
**MAC3-PK5S-E2D** Shown

**PK 3** **DM** **E2D** **R3**  
Illumination Options  
**MAC3-PK3-R3** Shown

**PK 5D** **DM** **E2D** **R3**  
Illumination Options  
**MAC3-PK5D-R3** Shown

**PK 5** **DM** **E2D** **R3**  
Illumination Options  
**MAC3-PK5-E2D** Shown

**PK 1** **DM** **E2D** **R3**  
Illumination Options  
**MAC3-PK1-DM** Shown

# MAC System Packages

**PK 5D** **DM** **E2D** **R3**  
Illumination Options  
**MAC-PK5D-E2D** Shown

**PK 1** **DM** **E2D** **R3**  
Illumination Options  
**MAC-PK1-DM** Shown

**PK 3** **DM** **E2D** **R3**  
Illumination Options  
**MAC-PK3-R3** Shown

**PK 5** **DM** **E2D** **R3**  
Illumination Options  
**MAC-PK5-E2D** Shown

- Optics**  
**MAC3** **MAC3 Macro Zoom Video Packages**
- All Systems include Macro-Zoom 7000 optics, The MAC3 camera/monitor combination, wireless mouse, USB 2.0 cable, USB software, and power supply. All systems include your choice of stand and LED lighting. See the icons to the right to choose the combination that best suits your needs.
- Your package number should look like this **MAC3-PK5-E2D**.
- |                                                       |                                                      |
|-------------------------------------------------------|------------------------------------------------------|
| <b>Stands</b>                                         | <b>Lighting</b>                                      |
| <b>PK 1</b> Ergo Post Stand   76mm Focus Rack         | <b>DM</b> Diffused LED Dome Light                    |
| <b>PK 3</b> Articulating Arm   76mm Focus Rack        | <b>E2D</b> Diffused LED Ring Light                   |
| <b>PK 5</b> Gliding Arm Boom Stand   76mm e-Arm       | <b>R3</b> High Intensity LED Ring Light w/ Polarizer |
| <b>PK 5D</b> Dual Arm Boom Stand   76mm e-Arm         |                                                      |
| <b>PK 5S</b> Single arm boom stand / 76mm Focus E-arm |                                                      |

- Optics**  
**MAC** **MAC Macro Zoom Video Packages**
- All Systems include Macro-Zoom 7000 optics, The Versa-Cam and 23" monitor, wireless mouse, USB 2.0 cable, USB software, and power supply. All systems include your choice of stand and LED lighting. See the icons to the right to choose the combination that best suits your needs.
- Your package number should look like this **MAC-PK1-DM**
- |                                                       |                                                      |
|-------------------------------------------------------|------------------------------------------------------|
| <b>Stands</b>                                         | <b>Lighting</b>                                      |
| <b>PK 1</b> Ergo Post Stand   76mm Focus Rack         | <b>DM</b> Diffused LED Dome Light                    |
| <b>PK 3</b> Articulating Arm   76mm Focus Rack        | <b>E2D</b> Diffused LED Ring Light                   |
| <b>PK 5</b> Gliding Arm Boom Stand   76mm e-Arm       | <b>R3</b> High Intensity LED Ring Light w/ Polarizer |
| <b>PK 5D</b> Dual Arm Boom Stand   76mm e-Arm         |                                                      |
| <b>PK 5S</b> Single arm boom stand / 76mm Focus E-arm |                                                      |





**MZ7A-PK2-SC2-E2D**

**System includes:** MZ7A Horizontal Micro-Zoom video zoom optics with feedback (0.5x video coupler, zoom body) on dual illuminated LED track stand with coarse and fine focus with NEW diffused LED ring light. Features NEW 1080p HDMI SMARTCAM2 with lens feedback (Includes SD card and mouse) with 23" HD LCD monitor. Calibration target included.



**MZ7A-PK5D-SC2-E2D**

**System includes:** MZ7A Horizontal Micro-Zoom video zoom optics with feedback (0.5x video coupler, zoom body) on dual arm boom stand with diffused compact LED ring light. Features NEW 1080p HDMI SMARTCAM2 with lens feedback (Includes SD card and mouse) with 23" HD LCD monitor. Calibration target included.



**MAC-PK5D-SC2-E2D**

**System includes:** MACRO video zoom optics (up to 65x magnification with 8" working distance) on dual arm boom stand with diffused compact LED ring light. Features NEW 1080p HDMI SMARTCAM2 (Includes SD card and mouse) with 23" HD LCD monitor. Calibration target included.



**MAC-PK1-SC2-E2D**

**System includes:** MACRO video zoom optics (up to 65x magnification with 8" working distance) on extended post stand with diffused compact LED ring light. Features NEW 1080p HDMI SMARTCAM2 (Includes SD card and mouse) with 23" HD LCD monitor. Calibration target included.



**MZ7A-PK5D-SC2-R3**

**System includes:** MZ7A Horizontal Micro-Zoom video zoom optics with feedback (0.5x video coupler, zoom body) on dual arm boom stand with NEW high intensity LED ring light with polarizer. Features NEW 1080p HDMI SMARTCAM2 with lens feedback (Includes SD card and mouse) with 23" HD LCD monitor. Calibration target included.



**MZ7A-PK2-SC2-R3**

**Systems include:** MZ7A Horizontal Micro-Zoom video zoom optics with feedback (0.5x video coupler, zoom body) on dual illuminated LED track stand with coarse and fine focus with NEW high intensity LED ring light with polarizer. Features NEW 1080p HDMI SMARTCAM2 with lens feedback (Includes SD card and mouse) with 23" HD LCD monitor. Calibration target included.



**MAC-PK1-SC2-R3**

**System includes:** MACRO video zoom optics (up to 65x magnification with 8" working distance) on extended post stand with NEW high intensity LED ring light with polarizer. Features NEW 1080p HDMI SMARTCAM2 (Includes SD card and mouse) with 23" HD LCD monitor. Calibration target included.



**MAC-PK5D-SC2-R3**

**System includes:** MACRO video zoom optics (up to 65x magnification with 8" working distance) on dual arm boom stand with NEW high intensity LED ring light with polarizer. Features NEW 1080p HDMI SMARTCAM2 (Includes SD card and mouse) with 23" HD LCD monitor. Calibration target included.



## Micro/Macro Zoom Video Lens

**5 Years** All zoom lens come with a 5 year manufacturer's warranty.

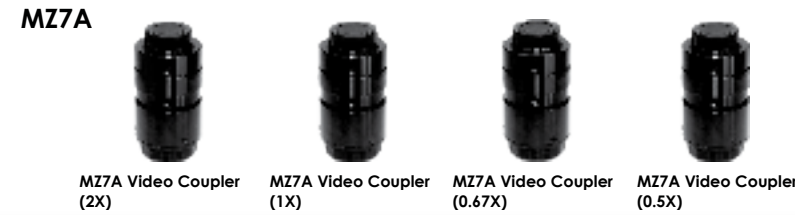
Item	Part Number
MZ7A Micro Zoom Lens	MZ7A-ZOOM
MAC Macro Zoom Lens	CC-97-LN1
MZ7A Micro Zoom Lens with Coaxial Module	MZ7A-ZOOM-C



## Video Couplers

**5 Years** All video couplers come with a 5 year manufacturer's warranty.

Item	Part Number
MZ7A Video Coupler (2X)	MZ7A-CP-20
MZ7A Video Coupler (1X)	MZ7A-CP-10
MZ7A Video Coupler (0.67X)	MZ7A-CP-07
MZ7A Video Coupler (0.5X)	MZ7A-CP-05



## Objective Lens

**5 Years** All objective lens come with a 5 year manufacturer's warranty.

Item	Part Number
MZ7 Objective Lens (2X)	MZ7-LA-20
MZ7 Objective Lens (0.75X)	MZ7-LA-07
MZ7 Objective Lens (0.5X)	MZ7-LA-05
MZ7 Objective Lens (0.25X)	MZ7-LA-02



## Doubler Lens for Macro Lens

**5 Years** All objective lens come with a 5 year manufacturer's warranty.

Item	Part Number
2X doubler	CC-97-LN1-2X



## Digital Cameras

**1 Year** All cameras come with 1 year manufacturer's warranty.

Item	Part Number
1080p HD Camera and 12" Monitor Combination	CC-CMC-12H
1080p HD Versa-Cam HDMI/USB Camera	CC-HDMI-CD2
1080p HD SmartCam2 Measurement Camera	CC-SMART2



## Light Sources

**1 Year** All light sources come with 1 year manufacturer's warranty. LED light is 3 years.

Item	Part Number
Compact LED ring light	IL-LED-E1
Diffused Compact LED ring light	IL-LED-E2D
Quadrant Compact LED ring light	IL-LED-E1Q
8-Point LED ring light with control unit	IL-LED-R2E
Diffused LED dome with control unit	IL-LED-R2D
High intensity LED ring with polarizer	IL-LED-R3
LED fiber optic illuminator	IL-FOI-L24A
Fiber optic annular ring light guide	FC-A2-36
Fiber optic dual pipe light guide	FC-DP-18



## Stands/Arms

**1 Year** All stands and focus mounts come with 1 year manufacturer's warranty.

Item	Part Number
Gliding Boom Stand	SB-BM2-R0
Dual Arm Boom Stand	SB-BM2-D0
Single Arm Boom Stand	SB-BM2-S0
Focus Mount	SB-AB-SZ
Focus Mount w/ Fine Focus	SB-AB-SZF
Extended Heavy-Duty Track Stand	ST-76-LGT
Ergo-Track Stand	ST-76-LG
Dual Illuminated Track Stand	CMO-ST-L2
Dual Illuminated Track Stand w/ Coarse & Fine Focus	CMO-DST-L2
Track Stand	ST-76
Post Stand w/ Extended Post	SP-76-18
Post Stand	SP-76
Articulating Arm (Black)	SB-FX-01
CF Articulating Arm	SB-HX-S0
Heavy-Duty Articulating Arm w/ Vertical Post	SB-CL2-FX (Clamp base)
	SB-TM2-FX (Ball-down base)
Dual/Single Arm Boom Stand Vertical Post (24")	SB-BM2-S024



## Adapters

**1 Year** All items come with 1 year manufacturer's warranty.

Item	Part Number
Ring Light Adapter for MZ7 Series	MZ7-10-70
Focus mount adapter for Macro Zoom lens	SB-76-47
Focus mount adapter for Micro Zoom lens	SB-76-39



## Monitors & Mounts

**1 Year** All monitors and monitor arm mounts come with 1 year manufacturer's warranty.

Item	Part Number
10" Color LCD Monitor	CC-LCD-10
23" Color Widescreen LCD Monitor	CC-LCD-22W
Desk Mount Arm for LCD Monitor	CC-MM-20
LCD Monitor Mount for Boom Stand	CC-MM-20B



## Filters

**1 Year** All filters come with 1 year manufacturer's warranty.

Item	Part Number
Polarizer for IL-LED-R2E	
Polarizer for IL-LED-R1E	
Polarizer for FC-A2-36	
Fiber Optic Illuminator Color Filter Kit	





# SCIENSCOPE

## COMPANY PROFILE

Scienscope is an industrial (NDT) solution provider committed to the best price to performance ratio we can offer. In business since 1994, Scienscope serves all areas of manufacturing in North America through a network of technical sales representatives and distributors. It is our mission to provide the most innovative and cost effective solutions for our customers' inspection problems. We are continuously developing new products and software to meet your needs.

The Scienscope inspection division is the core of our business. Our product line extends from benchtop magnifiers, stereo zoom microscopes, video inspection systems, video recognition systems to video measurement systems, and measurement software. As well, Scienscope manufactures industrial cabinet style micro focus X-Ray machines. Most of our products can be demonstrated on-site or online, please contact your local representatives or Scienscope directly for details. Please visit our website [www.scienscope.com](http://www.scienscope.com) for more product information and contacts. We appreciate the opportunity to do business with your company, let us know how we can help.

SOME OF OUR CUSTOMERS



FLEXTRONICS

FOXCONN



JABIL

Raytheon

NORTHROP GRUMMAN



Boston Scientific



SANMINA-SCI



Celestica.

## TERMS AND CONDITIONS

PRICES AND SPECIFICATIONS SUBJECT TO CHANGE WITHOUT NOTICE. SCIENSCOPE RESERVES THE RIGHT TO CORRECT PRINTING ERRORS. PRODUCTS ARE SHIPPED FOR CHINA, CA VIA UPS OR FEDEX UNLESS OTHERWISE SPECIFIED. PRODUCT MAY NOT BE RETURNED WITHOUT SCIENSCOPE APPROVAL. PLEASE CONTACT SCIENSCOPE DIRECTLY FOR RETURN AUTHORIZATION AND CONDITIONS.

## PRODUCT WARRANTY

SCIENSCOPE OFFERS A 3-YEAR WARRANTY ON ALL ITS OPTICAL PRODUCTS, INCLUDING MICROSCOPES, AUXILIARY LENSES, VIDEO COUPLERS, VIDEO LENSES, DIGITAL CAMERA ADAPTERS. ALL OTHER SCIENSCOPE PRODUCTS ARE WARRANTED FOR A 1-YEAR PERIOD, INCLUDING STANDS, FOCUS MOUNTS, LIGHT SOURCES, LIGHT GUIDES, CAMERAS AND MONITORS; BUSES ARE NOT WARRANTED.

SCIENSCOPE HAS THE RIGHT TO REPLACE OR EXCHANGE, AT ITS OPTION, ANY AND ALL PRODUCTS SENT BACK FOR WARRANTY SERVICE. WARRANTY SERVICE WILL BE PERFORMED BY SCIENSCOPE WHEN A RMA NUMBER IS OBTAINED. THE DEFECTIVE EQUIPMENT MUST BE RETURNED, POSTPAID, TO SCIENSCOPE WITH THE RMA NUMBER IN THE "ATTENTION TO" SECTION.

PRODUCTS DETERMINED BY SCIENSCOPE TO BE ABUSED, MISUSED OR USED IN A NEGLIGENT MANNER ARE NOT COVERED UNDER THIS WARRANTY. DAMAGE RESULTING FROM THE ATTEMPTED REPAIRS BY UNAUTHORIZED PARTIES OR DAMAGE DUE TO ACCIDENT WILL NOT BE COVERED.

All specifications subject to change without notification.

## CONTACT INFORMATION

Business Hours Monday ~ Friday (8AM~5PM Pacific Standard Time)

Phone (800) 216-1800 Toll-Free, (909) 590-7273

FAX (909) 494-5513

Address 5751 Schaefer Ave. Chino, CA 91710

Website <http://www.scienscope.com/>

E-Mail [info@scienscope.com](mailto:info@scienscope.com)

