



SERIES

- ELZ
- SSZ
- NZ
- E-SERIES (CMO)

INTRODUCTION

Scienscope is an industrial (NDT) solution provider committed to the best price to performance ratio we can offer. In business since 1994, Scienscope has served all manufacturing areas in North America through a network of technical sales representatives and distributors. Our mission is to provide the most innovative and cost-effective solutions for our customers' inspection problems. We are continuously developing new products and software to meet your needs.

The Scienscope inspection division is the core of our business. Our product line extends from benchtop magnifiers, stereo zoom microscopes, video inspection systems, video recognition systems to video measurement systems and measurement software. As well, Scienscope manufactures industrial cabinet-style micro focus X-Ray machines. We can give you a demo on-site or online, don't hesitate to contact your local representatives or Scienscope directly for details.

Please visit our website www.scienscope.com for more product information and contacts. We appreciate the opportunity to do business with your company. Let us know how we can help.

Our microscopes are perfect for a wide range of applications:

Electronics

Medical Devices

Automotive

semiconductors

Plastics

Aerospace

Micro-Stamping

Precision Machining

Perfect for doing:

Macro Documentation

Measuring

Inspection and Documentation

Sharing your work remotely



TABLE OF CONTENTS

2	ELZ Series
4	ELZ Binocular Systems
6	SSZ-II Series
8	SSZ-II Binocular Systems
10	NZ Series
12	NZ Series Binocular Systems
14	E-Series(CMO)
16	E-Series Microscope Configuration
17	E-Series Configuration Chart
18	E-Series 20° Systems
19	E-Series 0° - 45° Systems
20	VersaCam (CC-HDMI-CD2)
21	SmartCam-Ultra AF (CC-SMART-4K-AF)
22	SSZ-II Trinocular Systems
23	NZ Trinocular Systems
24	E-Series 20° Trinocular Systems
25	E-Series 0° - 45° Trinocular Systems

ELZ SERIES

The ELZ microscope series is designed for entry-level users or companies that require good quality on a budget. High-performance optics and small package deliver a great scope at a very affordable price.



FEATURES

- Quality construction and optics
- Variety of accessories
- Cost-effective
- Great started microscope



Data Sheet / ELZ Body Specs

Microscope Body Zoom Range	0.7X - 3X
Magnification	7X-30X (w/10X eyepiece)
Zoom Ratio	1:4.3
Field of View	31.4mm - 7.3mm (w/ 10X eyepieces)
Work Distance	100MM
Dioptric Adjustment	±5
Interpupillary Adjustment	46 - 76mm
Eyepieces Inclination	60°
Microscope Ring Mount Diameter	76mm

COMPACT & COST EFFECTIVE

The quality of ScienScope's stereo zoom microscope series and optical design provides high-quality images with more outstanding flatness. The coatings on lens surfaces provide clear, bright, and high-contrast views of your most challenging applications.



MAINTENANCE - FREE

Anti-mold and air-tight sealed body design eliminates the need for regular maintenance and adds additional reliability in most working environments.



HIGH QUALITY OPTICS

Based on NZ series microscope construction, the ELZ surpasses many competitors in the compact category.



UPGRADABLE SYSTEM

Upgrades available on eyepieces, objectives, lenses, light sources, and many other microscope parts allow flexible adaptation to your changing workflow.

COMPACT PERFORMANCE



ELZ Binocular Optical Specs

Objective Lens	Eyepieces						Working Distance
	10x		15x		20x		
	MAG	FOV (mm)	MAG	FOV (mm)	MAG	FOV (mm)	
0.5X	3.5x- 15x	66.9- 15	5.3x- 22.5x	4.6-11	7x-30x	36-8.3	177mm
Default	7x-30x	31.4-7.3	10.5x-45x	22.9-5.3	14x-60x	17.9x4.1	100mm
2x	14x-60x	16-3.7	21x-90x	11.4 - 8	28x - 120x	9-6	26mm

Optical Magnification Formula

Total Magnification = (Mag. of Eyepieces) X (Mag. of the objective zoom range on body) X (Mag/ of objective lens)

* Included in standard package

ELZ BINOCULAR SYSTEMS

ELZ-PK1 Systems on post stands with choice of lighting



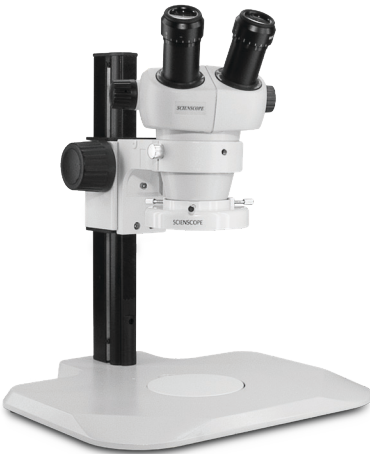
Package Contents

- ELZ Stereo Zoom Binocular
- 10x eyepieces
- ErgoPost Stand with 76mm focus rack
- *Choice of lighting*

Packages with Lighting Options

- ELZ-PK1-AN (Fiber optic annular ring light guide)
- ELZ-PK1-R3E (New super-bright low-profile LED ring light)
- ELZ-PK1-R3 (New high intensity LED ring light with polarizer)
- ELZ-PK1-E1 (Quadrant compact LED ring light)

ELZ-PK2 Systems on track stands with choice of lighting



Package Contents

- ELZ Stereo Zoom Binocular
- 10x eyepieces
- ErgoTrack Stand with 76mm focus rack
- *Choice of lighting*

Packages with Lighting Options

- ELZ-PK2-AN (Fiber optic annular ring light guide)
- ELZ-PK2-R3E (New super-bright low-profile LED ring light)
- ELZ-PK2-R3 (New high intensity LED ring light with polarizer)
- ELZ-PK2-E1 (Quadrant compact LED ring light)

ELZ-PK3 Systems on articulating arms with choice of lighting



Package Contents

- ELZ Stereo Zoom Binocular
- 10x eyepieces
- Articulating arm with 76mm focus rack
- 0.5x auxiliary lens
- *Choice of lighting*

Packages with Lighting Options

- ELZ-PK3-AN (Fiber optic annular ring light guide)
- ELZ-PK3-R3E (New super-bright low-profile LED ring light)
- ELZ-PK3-R3 (New high intensity LED ring light with polarizer)
- ELZ-PK3-E1 (Quadrant compact LED ring light)

ELZ-PK5S Systems on single arm boom stands with choice of lighting



Package Contents

- ELZ Stereo Zoom Binocular, 10x eyepieces
- Eye guards
- Single arm boom stand with 76mm e-arm
- 0.5x auxiliary lens
- *Choice of lighting*

Packages with Lighting Options

ELZ-PK5S-AN (Fiber optic annular ring light guide)

[ELZ-PK5S-R3E \(New super-bright low-profile LED ring light\)](#)

ELZ-PK5S-R3 (New high intensity LED ring light with polarizer)

ELZ-PK5S-E1 (Quadrant compact LED ring light)

ELZ-PK5D Systems on dual arm boom stands with choice of lighting



Package Contents

- ELZ Stereo Zoom Binocular
- 10x eyepieces
- Dual arm boom stand with 76mm e-arm
- 0.5x auxiliary lens
- *Choice of lighting*

Packages with Lighting Options

ELZ-PK2-AN (Fiber optic annular ring light guide)

[ELZ-PK2-R3E \(New super-bright low-profile LED ring light\)](#)

ELZ-PK2-R3 (New high intensity LED ring light with polarizer)

ELZ-PK2-E1 (Quadrant compact LED ring light)

SSZ-II SERIES

With long-term reliability and customer satisfaction in mind, we have redesigned the SSZ-II series Stereo Zoom Microscopes. We have retained the core quality and technology while improving the ergonomics, optics, and performance. We are confident that you will experience the same long-term dependability and enjoy the new features and benefits.

SSZ-II BINOCULAR



FEATURES

- Quality construction and optics
- Variety of accessories
- Highest customer satisfaction
- True trinocular

SSZ-II TRINOCULAR



Data Sheet / SSZ-II Body Specs

Microscope Body Zoom Range	0.67X - 4.5X
Magnification	6.7X-45X (w/10X eyepieces)
Zoom Ratio	1:6.7
Field of View	32.8mm - 4.9mm (w/ 10X eyepieces)
Work Distance	100MM
Dioptric Adjustment	±5
Interpupillary Adjustment	50-76mm
Eyepieces Inclination	45°
Microscope Ring Mount Diameter	76mm

PROVEN PERFORMANCE

The SSZ series is the cornerstone of the ScienScope stereo zoom microscope line. The compact and durable design, incorporating the Greenough optical system, delivers exceptional flatness and depth of field and clarity, and accurate color. Over 15 years of continued customer satisfaction, the SSZ has remained ScienScope's most popular microscope.



HD CAMERA OPTIONS

View HD images in real-time on an HD LCD monitor and capture images to an SD card or connect to a computer via USB to capture images, annotate, and draw with the included software.



USER FRIENDLY - ERGONOMIC

High eye-point eyepieces and ergonomically located zoom control make for one of the most comfortable user experiences of any non-parallel zoom system.



BUILD TO LAST

Precision CNC machine parts assembled to the leading industry standards extend the microscope's life and lower service and maintenance costs.

PROVEN PERFORMANCE

SSZ-II Binocular Optical Specs

Objective Lens	Eyepieces				Working Distance
	10x		20x		
	MAG	FOV (mm)	MAG	FOV (mm)	
0.3X	2x- 13.5x	109.5- 16.3	4x- 27x	59.7- 8.9	287mm
0.4X	2.7x- 18x	82.1- 12.2	5.4x- 36x	35.8- 5.3	217mm
* 0.5X	3.4x- 22.5x	65.7- 9.8	6.7x- 45x	35.8- 5.3	177mm
0.75X	5x- 33.8x	43.8- 6.5	10.1x- 67.5x	23.9- 3.6	117mm
* Default (1X)	6.7x- 45x	32.8- 4.9	13.4x- 90x	17.9- 2.7	100mm
1.5X	10.1x- 67.5x	21.9- 3.3	20.1x- 135x	11.9- 1.8	47mm
2x	13.4x- 90x	16.4- 2.4	26.8x- 180x	9- 1.3	26mm

Optical Magnification Formula

Total Magnification = (Mag. of Eyepieces) X (Mag. of objective zoom range on body) X (Mag/ of objective lens)

* Included in standard package

SSZ-II BINOCULAR SYSTEMS

SZ-PK1 Systems on post stands with choice of lighting



Package Contents

- SSZ-II Stereo Zoom Binocular
- 10x eyepieces
- ErgoPost Stand with 76mm focus rack
- *Choice of lighting*

Packages with Lighting Options

SZ-PK1-AN (Fiber optic annular ring light guide)

[SZ-PK1-R3E \(New super-bright low-profile LED ring light\)](#)

SZ-PK1-R3 (New high intensity LED ring light with polarizer)

SZ-PK1-E1 (Quadrant compact LED ring light)

SZ-PK2 Systems on track stands with choice of lighting



Package Contents

- SSZ-II Stereo Zoom Binocular
- 10x eyepieces
- ErgoTrack Stand with 76mm focus rack
- *Choice of lighting*

Packages with Lighting Options

SZ-PK2-AN (Fiber optic annular ring light guide)

SZ-PK2-R3E (New super-bright low-profile LED ring light)

[SZ-PK2-R3 \(New high intensity LED ring light with polarizer\)](#)

SZ-PK2-E1 (Quadrant compact LED ring light)

SZ-PK3 Systems on articulating arms with choice of lighting



Package Contents

- SSZ-II Stereo Zoom Binocular
- 10x eyepieces
- Articulating arm with 76mm focus rack
- 0.5x auxiliary lens
- *Choice of lighting*

Packages with Lighting Options

SZ-PK3-AN (Fiber optic annular ring light guide)

SZ-PK3-R3E (New super-bright low-profile LED ring light)

SZ-PK3-R3 (New high intensity LED ring light with polarizer)

[SZ-PK3-E1 \(Quadrant compact LED ring light\)](#)

SZ-PK5S Systems on single arm boom stands with choice of lighting



Package Contents

- SSZ-II Stereo Zoom Binocular, 10x eyepieces
- Eye guards
- Single arm boom stand with 76mm e-arm
- 0.5x auxiliary lens
- *Choice of lighting*

Packages with Lighting Options

SZ-PK5S-AN (Fiber optic annular ring light guide)

[SZ-PK5S-R3E \(New super-bright low-profile LED ring light\)](#)

SZ-PK5S-R3 (New high intensity LED ring light with polarizer)

SZ-PK5S-E1 (Quadrant compact LED ring light)

SZ-PK5D Systems on dual arm boom stands with choice of lighting



Package Contents

- SSZ-II Stereo Zoom Binocular
- 10x eyepieces
- Dual arm boom stand with 76mm e-arm
- 0.5x auxiliary lens
- *Choice of lighting*

Packages with Lighting Options

SZ-PK5D-AN (Fiber optic annular ring light guide)

[SZ-PK5D-R3E \(New super-bright low-profile LED ring light\)](#)

SZ-PK5D-R3 (New high intensity LED ring light with polarizer)

SZ-PK5D-E1 (Quadrant compact LED ring light)

SZ-PK3FX Systems on heavy duty articulating arms with choice of lighting



Package Contents

- SSZ-II Stereo Zoom Binocular
- 10x eyepieces
- HEAVY DUTY articulating arm with 15" vertical post and 76mm focus moun
- 0.5x auxiliary lens

Packages with HEAVY DUTY articulating arm with 15" vertical post Options

SZ-PK3FX-AN (Fiber optic annular ring light guide)

[SZ-PK3FX-R3E \(New super-bright low-profile LED ring light\)](#)

SZ-PK3FX-R3 (New high intensity LED ring light with polarizer)

SZ-PK3FX-E1 (Quadrant compact LED ring light)

NZ SERIES

Scienscope designed NZ Series Stereo Zoom Microscopes to meet the requirements of users who demand superior features and higher performance optics from a stereo zoom microscope.

NZ BINOCULAR



FEATURES

- Quality construction and optics
- Long working distance
- Maintenance-free
- True trinocular

NZ TRINOCULAR



Data Sheet / NZ Body Specs

Microscope Body Zoom Range	08X- 5X
Magnification	8X- 50X (w/ 10X eyepieces)
Zoom Ratio	1:6.3
Field of View	27.5mm- 4.4mm (w/10X eyepieces)
Work Distance	115mm
Dioptric Adjustment	±5
Interpupillary Adjustment	50-76mm
Eyepieces Inclination	45°
Microscope Ring Mount Diameter	76mm

HIGHER PERFORMANCE

Featuring a zoom magnification of 5X and a long working distance of 115mm, the NZ Series is well suited for all industrial applications. The airtight design allows for any environment where temperature and humidity are high. The NZ series trinocular is a true-trinocular using the highest quality beam splitter for an exceptionally flat image.



MAINTENANCE - FREE

Anti-mold and air-tight sealed body design eliminate the need for regular maintenance and add additional reliability in most working environments.



PRECISION OPTICS

Precision polished optics provide a clear and defined image for accurate inspection or manual assembly, micro-soldering, or dissection.



HD CAMERA OPTIONS

The third viewport provides video output and allows for training and documenting your work to be a snap. Now with 4K or 1080p options!

SUPERIOR OPTICS AND MECHANICAL CONSTRUCTION

NZ Binocular Optical Specs

Objective Lens	Eyepieces						Working Distance
	10x		15x		20x		
	MAG	FOV (mm)	MAG	FOV (mm)	MAG	FOV (mm)	
0.5X	4x- 25x	55- 8.8	6x- 37.5x	40- 6.4	8x- 50x	31.2- 5.0	211mm
Default	8x- 50x	27.5- 4.4	12x- 75x	20- 3.2	16x- 100x	15.6- 2.5	115mm
2x	16x- 100x	13.8- 2.2	24x- 150x	10- 1.6	32x- 200x	7.8- 1.3	43.5mm

Optical Magnification Formula

Total Magnification = (Mag. of Eyepieces) X (Mag. of the objective zoom range on body) X (Mag/ of objective lens)

* Included in standard package

NZ SERIES BINOCULAR SYSTEMS

NZ-PK1 Systems on post stands with choice of lighting



Package Contents

- NZ Stereo Zoom Binocular
- 10x eyepieces
- ErgoPost Stand with 76mm focus rack
- *Choice of lighting*

Packages with Lighting Options

NZ-PK1-AN (Fiber optic annular ring light guide)
NZ-PK1-R3E (New super-bright low-profile LED ring light)
NZ-PK1-R3 (New high intensity LED ring light with polarizer)
[NZ-PK1-E1 \(Quadrant compact LED ring light\)](#)

NZ-PK2 Systems on track stands with choice of lighting



Package Contents

- NZ Stereo Zoom Binocular
- 10x eyepieces
- ErgoTrack Stand with 76mm focus rack
- *Choice of lighting*

Packages with Lighting Options

NZ-PK2-AN (Fiber optic annular ring light guide)
NZ-PK2-R3E (New super-bright low-profile LED ring light)
[NZ-PK2-R3 \(New high intensity LED ring light with polarizer\)](#)
NZ-PK2-E1 (Quadrant compact LED ring light)

NZ-PK3 Systems on articulating arms with choice of lighting



Package Contents

- NZ Stereo Zoom Binocular
- 10x eyepieces
- Articulating arm with 76mm focus rack
- 0.5x auxiliary lens
- *Choice of lighting*

Packages with Lighting Options

NZ-PK3-AN (Fiber optic annular ring light guide)
NZ-PK3-R3E (New super-bright low-profile LED ring light)
[NZ-PK3-R3 \(New high intensity LED ring light with polarizer\)](#)
NZ-PK3-E1 (Quadrant compact LED ring light)

NZ-PK5S Systems on single arm boom stands with choice of lighting



Package Contents

- NZ Stereo Zoom Binocular, 10x eyepieces
- Eye guards
- Single arm boom stand with 76mm e-arm
- 0.5x auxiliary lens
- *Choice of lighting*

Packages with Lighting Options

NZ-PK5S-AN (Fiber optic annular ring light guide)

NZ-PK5S-R3E (New super-bright low-profile LED ring light)

[NZ-PK5S-R3 \(New high intensity LED ring light with polarizer\)](#)

NZ-PK5S-E1 (Quadrant compact LED ring light)

NZ-PK5D Systems on dual arm boom stands with choice of lighting



Package Contents

- NZ Stereo Zoom Binocular
- 10x eyepieces
- Dual arm boom stand with 76mm e-arm
- 0.5x auxiliary lens
- *Choice of lighting*

Packages with Lighting Options

NZ-PK5D-AN (Fiber optic annular ring light guide)

NZ-PK5D-R3E (New super-bright low-profile LED ring light)

[NZ-PK5D-R3 \(New high intensity LED ring light with polarizer\)](#)

NZ-PK5D-E1 (Quadrant compact LED ring light)

NZ-PK5 Systems on heavy duty articulating arms with choice of lighting



Package Contents

- NZ Stereo Zoom Binocular
- 10x eyepieces
- HEAVY DUTY articulating arm with 15" vertical post and 76mm focus mount
- 0.5x auxiliary lens
- *Choice of lighting*

Packages with HEAVY DUTY articulating arm with 15" vertical post Options

SZ-PK3FX-AN (Fiber optic annular ring light guide)

[SZ-PK3FX-R3E \(New super-bright low-profile LED ring light\)](#)

SZ-PK3FX-R3 (New high intensity LED ring light with polarizer)

SZ-PK3FX-E1 (Quadrant compact LED ring light)

E-SERIES_(CMO)

The E-Series offers higher magnification than standard models, enabling high-resolution observation of small features. Improved aberration correction provides bright and sharp images through the entire field. The parallel optics allows ergonomic accessories and observation attachments to be used in a wide range of applications.



E-SERIES_(CMO) WITH SEMI-ERGO 20 DEGREE

FEATURES

- Ergonomic and customizable
- Infinity corrected optics
- Maintenance-free
- True trinocular



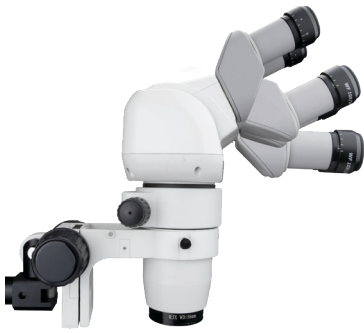
E-SERIES_(CMO) 0° - 45° TRINOCULAR

Data Sheet / E-Series_(CMO) Body Specs

Microscope Body Zoom Range	08X- 8X
Magnification	8X- 80X (w/ 10X eyepieces)
Zoom Ratio	1:10
Field of View	28.8mm- 2.9mm (w/10X eyepieces)
Work Distance	78mm
Dioptric Adjustment	±5
Interpupillary Adjustment	51- 75mm
Eyepieces Inclination	20°
Microscope Ring Mount Diameter	76mm

SUPERIOR PERFORMANCE

In addition to essential, optional accessories, the same high level of accessories used with superior models is also available for this model. These include trinocular tubes, and slim-type LED diascope illumination stands. These allow various microscope configurations to suit numerous routine inspections and a range of research and development applications.



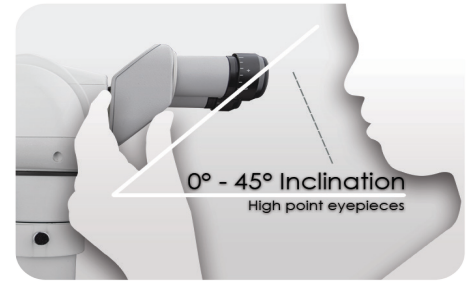
OPTIMUM USER COMFORT

Eyepieces tilt and rotate to adjust for operator height. Eyepieces rotate 180 degrees with three inches of travel. The inclination is adjustable from 0 to 45



STACKABLE ACCESSORIES

A parallel infinity-corrected optical system allows for ergonomic customization and stacking of several components without distorting the image.



LESS OPERATOR FATIGUE

Eyepiece inclination of 20° allows you to observe without leaning forward, which reduces fatigue during long hours of operation.

EXCEPTIONAL CLARITY AND COMFORT

E-Series (CMO) Binocular Optical Specs

Objective Lens	Eyepieces					Working Distance
	10x			20x		
	Body Zoom	MAG	FOV (mm)	MAG	FOV (mm)	
0.5X	1:6	4x-25x	57.5-9.2	8x-50x	35-5.6	187mm
	1:10	4x-40x	57.5-5.8	8x-80x	35.-3.5	
1X	1:6	8x-50x	28.8-4.6	16x-100x	17.5-2.8	78mm
	1:10	8x-80x	28.8-2.9	16x-160x	17.5-1.8	
2X	1:6	16x-100x	14.4-2.9	32x-200x	8.8-1.4	35mm
	1:10	16x-160x	14.4-1.8	32x-320x	8.8-0.9	

Optical Magnification Formula

Total Magnification = (Mag. of Eyepieces) X (Mag. of the objective zoom range on body) X (Mag/ of objective lens)

* Included in standard package

E-SERIES MICROSCOPE CONFIGURATION CHART



E-Series Binocular Configuration

Minimum required components that comprise a binocular microscope system:

- Eyepieces
- Binocular Head
- Zoom Body
- Objective Lens

E-Series Microscopes configured as a binocular system with 0°-45° Tilting Head.



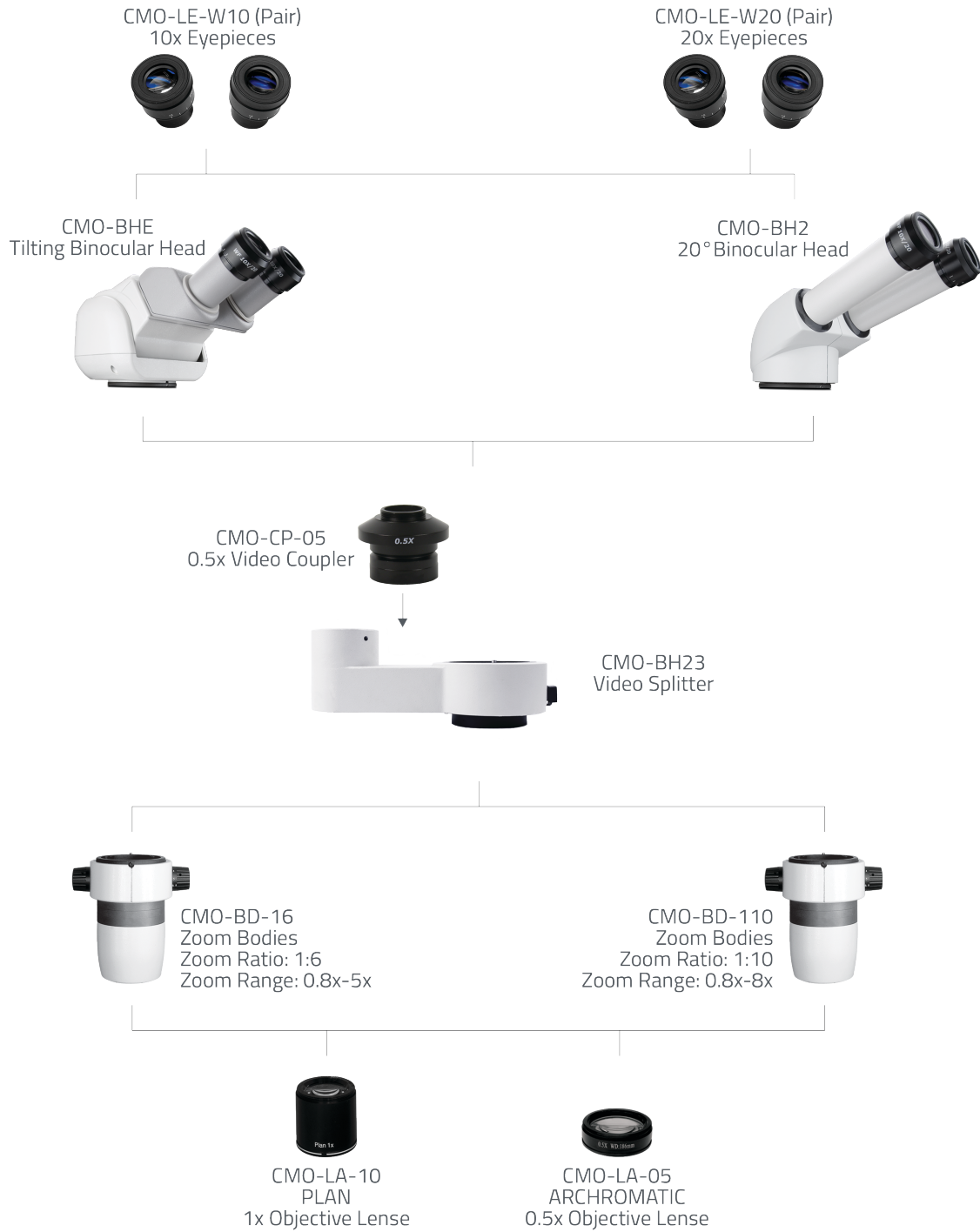
E-Series Trinocular Configuration

Minimum required components that comprise a trinocular microscope system:

- Eyepieces
- Binocular Head
- Video Splitter
- Video Coupler
- Zoom Body
- Objective Lens
- Digital Camera

E-Series Microscopes configured as a trinocular system with optional video splitter video coupler and CMOS Camera.

E-SERIES MICROSCOPE CONFIGURATION CHART



E-SERIES 20° BINOCULAR SYSTEMS



Package Contents

- E-Series 20° Binocular Head
- 10x Eyepieces (Pair)
- 1:6 Zoom Body (0.8x-5x)
- 1x Objective Lens

Packages with Lighting Options

[CMO-PK2 \(Dual LED Illuminated Track Stand with reflected and transmitted light\)](#)



Package Contents

- E-Series 20° Binocular Head
- 10x Eyepieces (Pair)
- 1:6 Zoom Body (0.8x-5x)
- 1x Objective Lens
- Dual focus ergo-track stand with stage
- *Choice of lighting*

Packages with Lighting Options

[CMO-PK2-AN \(Fiber optic annular ring light guide\)](#)
[CMO-PK2-R3E \(New super-bright low-profile LED ring light\)](#)



Package Contents

- E-Series 20° Binocular Head
- 10x Eyepieces (Pair)
- 1:6 Zoom Body (0.8x-5x)
- 0.5x Achromatic objective Lens
- *Choice of lighting*

Packages with Lighting Options

[CMO-PK3-E1 \(Quadrant compact LED ring light\)](#)
[CMO-PK3-R3E \(NEW high intensity LED ring light\)](#)



Package Contents

- E-Series 20° Binocular Head
- 10x Eyepieces (Pair)
- 1:6 Zoom Body (0.8x-5x)
- 0.5x Achromatic objective Lens
- LED illuminator
- 76mm focus mount
- *Choice of lighting*

Packages with Lighting Options

[CMO-PK5S-AN \(Fiber optic annular ring light guide\)](#)
[CMO-PK5S-R3E \(New super-bright low-profile LED ring light\)](#)
[CMO-PK5S-E1 \(Quadrant compact LED ring light\)](#)



Package Contents

- E-Series 20° Binocular Head
- 10x Eyepieces (Pair)
- 1:6 Zoom Body (0.8x-5x)
- 0.5x Achromatic objective Lens
- LED illuminator
- 76mm focus mount
- *Choice of lighting*

Packages with Lighting Options

[CMO-PK5D-AN \(Fiber optic annular ring light guide\)](#)
[CMO-PK5D-R3E \(New super-bright low-profile LED ring light\)](#)
[CMO-PK5D-E1 \(Quadrant compact LED ring light\)](#)

E-SERIES 0°- 45° BINOCULAR SYSTEMS



Package Contents

- E-Series 0°-45° Tilting Head
- 10x Eyepieces (Pair)
- 1:6 Zoom Body (0.8x-5x)
- 1x Objective Lens

Packages with Lighting Options

[CMO-PK2E](#) (Dual LED Illuminated Track Stand with reflected and transmitted light)



Package Contents

- E-Series 0°-45° Tilting Head
- 10x Eyepieces (Pair)
- 1:6 Zoom Body (0.8x-5x)
- 1x Objective Lens
- Dual focus ergo-track stand with stage
- *Choice of lighting*

Packages with Lighting Options

[CMO-PK2E-AN](#) (Fiber optic annular ring light guide)
[CMO-PK2E-R3E](#) (New super-bright low-profile LED ring light)



Package Contents

- E-Series 0°-45° Tilting Head
- 10x Eyepieces (Pair)
- 1:6 Zoom Body (0.8x-5x)
- 0.5x Achromatic objective Lens
- *Choice of lighting*

Packages with Lighting Options

[CMO-PK3-E1-E](#) (Quadrant compact LED ring light)
[CMO-PK3-R3E-E](#) (NEW high intensity LED ring light)



Package Contents

- E-Series 0°-45° Tilting Head
- 10x Eyepieces (Pair)
- 1:6 Zoom Body (0.8x-5x)
- 0.5x Achromatic objective Lens
- LED illuminator
- 76mm focus mount
- *Choice of lighting*

Packages with Lighting Options

[CMO-PK5S-AN-E](#) (Fiber optic annular ring light guide)
[CMO-PK5S-R3E-E](#) (New super-bright low-profile LED ring light)
[CMO-PK5S-E1-E](#) (Quadrant compact LED ring light)



Package Contents

- E-Series 0°-45° Tilting Head
- 10x Eyepieces (Pair)
- 1:6 Zoom Body (0.8x-5x)
- 0.5x Achromatic objective Lens
- LED illuminator
- 76mm focus mount
- *Choice of lighting*

Packages with Lighting Options

[CMO-PK5D-R3E-E](#) (New super-bright low-profile LED ring light)
[CMO-PK5D-E1-E](#) (Quadrant compact LED ring light)



VERSACAM (CC-HDMI-CD2)

1080p HDMI and 2 MP USB 2.0 Camera
 Featured with all Package 10 Microscope configurations (PK10)

Excellent HDMI camera with Direct/USB output and 1080p Resolution. Very Fast refresh rate on Live Video at 60 Frames Per Second Sensor. Digital Zoom for increasing magnification.

Image Capture and Movie Capture built into camera on SD Card (No Computer Required). Compatible with all ScienScope Lenses and Microscope including Macro Lens (CC-97-LN1) and Micro Zoom (MZ7A-Zoom). Two USB Ports allow connection to a computer or network. Video Image Express Measurement Software is a great addition.

CAMERA FEATURES USING HDMI CONNECTION

- On-screen control bar and setting menu
- Image and video capture to SD card
- Split-screen live image/captured image comparison (picture in picture)
- Image and video gallery / Image and video review
- Wireless mouse control

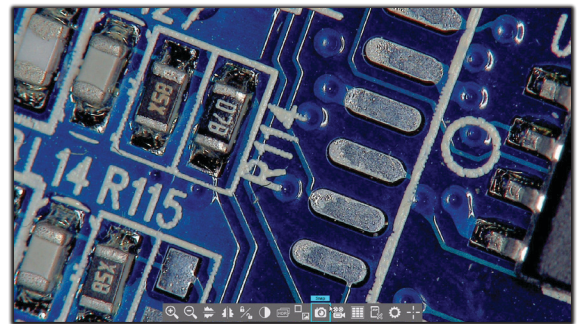


CAMERA FEATURES USING USB 2.0 CONNECTION

- Image and video capture using Windows 10 camera app
- Image and video capture using the included software
- Annotation and drawing tools on live captured images
- Upgrade software with FOV measurement tools

SPECS

- 1080p HD (1920x1080 @ 60 fps) HDMI
- 2 Megapixel (1920x1080 @ 30 fps) USB 2.0



Comes loaded with image enhancement, capture comparison, and memory management tools.

CAMERA FEATURES	1080p Resolution	4K Resolution	HDMI Live Image	USB 2.0 or 3.0 Connection/Capture	SD Card Capture	USB Thumb Drive Capture	WIFI Transmitter & Connection	Live Annotation	AutoFocus
SmartCam-Ultra (CC-SMART-4K-AF)	●	●	●	●	●	●	●	●	●
VersaCam (CC-HDMI-CD2)	●		●	●	●				

SMARTCAM-ULTRA AF (CC-SMART-4K-AF)

4K HDMI, 8.2 MP USB 3.0, and WiFi Camera w/ AutoFocus
 Featured with all Package 12 Microscope configurations (PK12)

The SmartCam-Ultra AF from ScienScope is our most advanced 4k resolution camera. It features a vivid 4K image to a live monitor (HDMI) or 8.2 Megapixel image via USB 3.0 and WiFi to a computer. Includes a host of onboard image processing and measurement tools accessible using a mouse connected to the camera via its onboard software. Capture images to SD card, USB Flash drive, USB 3.0, and WiFi.

Measure anything using the onboard field of view measuring tools, DXF overlay, or multi-line generator. Export your measurement data and images with measured objects!



CAMERA FEATURES USING USB 3.0 OR WIFI CONNECTION

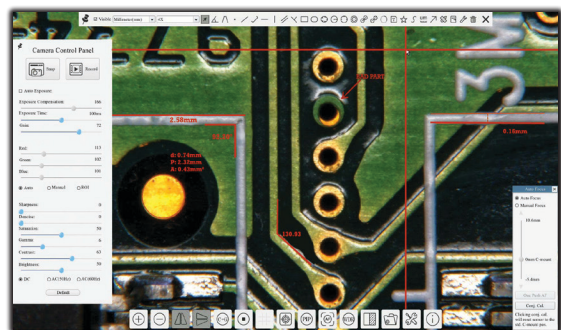
- Image and video capture using Windows 10 camera app
- Measure and annotate using included WiFi and USB 3.0 software
- Image and video capture using the included software
- Directly email or print images
- Export measurement data

CAMERA FEATURES USING HDMI CONNECTION

- Live measurement and annotation tools
- Image and video capture to SD card or USB Flash drive
- Split-screen live image/captured image comparison
- Image and video gallery / Image and video review
- Export measurement data to SD card or USB Flash
- Wireless mouse control

SPECS

- 4k (3840 x 2160 @ 60 fps) HDMI
- 8.2 Megapixel (3840 x 2160 @ 60 fps) USB 3.0 and WiFi



Easy to use live annotation tools!
 Make notes and capture the image!

Measurement Data Export	Integrated FOV Measurement	Live Image/Capture Image Compare	DXF Overlay	Onscreen Reticle	Digital Caliper/Counting Grid	Live Image Processing Menu	Digital Zoom	Settings Export & Import
●	●	●	●	●	●	●	●	●
		●			●	●	●	



SSZ TRINOCULAR SYSTEMS



Package Contents

- SZ Stereo Zoom TRUE Trinocular
- 10x eyepieces with eye guards
- Dual arm boom stand with 76mm e-arm
- 0.5x auxiliary lens
- 0.5x video coupler
- 1080p HDMI/USB camera (Includes SD card, USB cable and mouse) with 23" HD LCD monitor and capture software

Packages with Lighting Options

SZ-PK10-AN (LED fiber optic illuminator, Fiber optic annular ring light guide)

SZ-PK10-R3E (8 point LED right light)

SZ-PK10-R3 (NEW high intensity LED right light with polarizer)

SZ-PK10-E1 (Quadrant compact LED right light)



Package Contents

- SZ Stereo Zoom TRUE Trinocular
- 10x eyepieces with eye guards
- Dual arm boom stand with 76mm e-arm
- 0.5x auxiliary lens
- 0.5x video coupler
- NEW 4K HDMI/USB/WiFi AutoFocu camera (Includes SD card, USB cable and mouse) with 26" 4K monitor and capture software

Packages with Lighting Options

SZ-PK12-AN (LED fiber optic illuminator, Fiber optic annular ring light guide)

SZ-PK12-R3E (8 point LED right light)

SZ-PK12-R3 (NEW high intensity LED right light with polarizer)

SZ-PK12-E1 (Quadrant compact LED right light)

SSZ Trinocular Video Specs

Objective Lens	Video Coupler		Working Distance
	0.5X		
	MAG	FOV (mm)	
0.3X	7x-47.1x	100-13	287mm
0.4X	9.4x-62.9x	75-10	217mm
0.5X	11.7x-78.6x	60-8	177mm
0.75X	17.5x-117.9x	40-5.3	117mm
1X *	23.4x-157.2x	30-4	100mm
1.5X	35.1x-235.7x	20-2.6	47mm
2X	46.8x-314.3x	15-2	26mm

VIDEO MAGNIFICATION FORMULA

Total Magnification = (Mag. of CCD) X (Mag. of the objective zoom range on body) X (Mag. of objective lens) X (Diagonal display)

NZ TRINOCULAR SYSTEMS

Package Contents

- NZ Stereo Zoom TRUE Trinocular
- 10x eyepieces with eye guards
- Dual arm boom stand with 76mm e-arm
- 0.5x auxiliary lens
- 0.4x video coupler
- 1080p HDMI/USB camera (Includes SD card, USB cable and mouse) with 23" HD LCD monitor and capture software

Packages with Lighting Options

NZ-PK10-AN (LED fiber optic illuminator, Fiber optic annular ring light guide)

NZ-PK10-R3E (New super-bright low-profile LED ring light)

NZ-Pk10-R3 (NEW high intensity LED right light with polarizer)

NZ-PK10-E1 (Quadrant compact LED right light)

Package Contents

- NZ Stereo Zoom TRUE Trinocular
- 10x eyepieces with eye guards
- Dual arm boom stand with 76mm e-arm
- 0.5x auxiliary lens
- 0.4x video coupler
- NEW 4K HDMI/USB/WiFi AutoFocu camera (Includes SD card, USB cable and mouse) with 26" 4K monitor and capture software

Packages with Lighting Options

NZ-PK12-AN (LED fiber optic illuminator, Fiber optic annular ring light guide)

NZ-PK12-R3E (New super-bright low-profile LED ring light)

NZ-Pk12-R3 (NEW high intensity LED right light with polarizer)

NZ-PK12-E1 (Quadrant compact LED right light)



NZ Trinocular Video Specs

Objective Lens	Video Coupler		Working Distance
	0.4X		
	MAG	FOV (mm)	
0.5X	11.2x-69.9x	49.97-7.99	211mm
1X *	22.4x-139.7x	24.98-3.99	115mm
2X	44.7x-279.4x	12-2	43.5mm

VIDEO MAGNIFICATION FORMULA

Total Magnification = (Mag. of CCD) X (Mag. of the objective zoom range on body) X (Mag. of objective lens) X (Diagonal dis-

E-SERIES 20° TRINOCULAR SYSTEMS



Package Contents

- E-Series 20° Binocular Head with 10x Eyepieces (Pair)
- 1:6 Zoom Body (0.8x-5x)
- 0.5x Achromatic objective Lens
- 76mm focus mount
- Dual arm boom stand
- 0.4x video coupler and beam splitter
- 1080p HDMI/USB camera (Includes SD card, USB cable and mouse) with 23" HD LCD monitor and capture software

Packages with Lighting Options

- CMO-PK10-AN (Dual LED Illuminator with Fiber optic annular ring light)
- [CMO-PK10-R3E \(NEW high intensity LED ring light\)](#)
- CMO-PK10-E1 (Quadrant compact LED ring light)

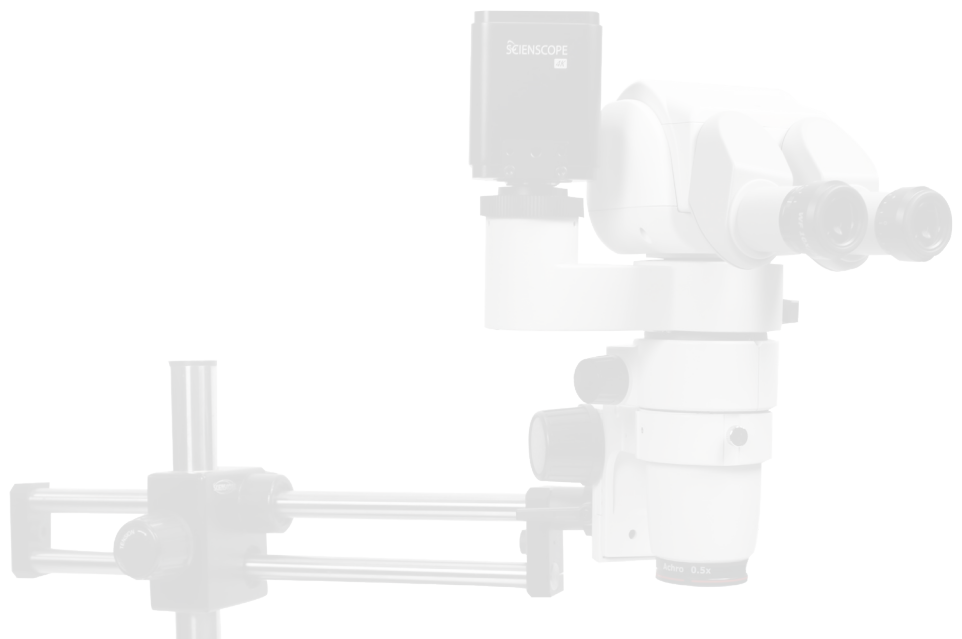
Package Contents



- E-Series 20° Binocular Head with 10x Eyepieces (Pair)
- 1:6 Zoom Body (0.8x-5x)
- 0.5x Achromatic objective Lens
- 76mm focus mount
- Dual arm boom stand
- 0.4x video coupler and beam splitter
- NEW 4K HDMI/USB/WiFi AF camera (Includes SD card, USB cable and mouse) with 26" 4K monitor and capture software

Packages with Lighting Options

- CMO-PK12-AN (Dual LED Illuminator with Fiber optic annular ring light)
- [CMO-PK12-R3E \(NEW high intensity LED ring light\)](#)
- CMO-PK12-E1 (Quadrant compact LED ring light)



E-SERIES 0°- 45° TRINOCULAR SYSTEMS



Package Contents

- E-Series 40° Binocular Head with 10x Eyepieces (Pair)
- 1:6 Zoom Body (0.8x-5x)
- 0.5x Achromatic objective Lens
- 76mm focus mount
- Dual arm boom stand
- 0.4x video coupler and beam splitter
- 1080p HDMI/USB camera (Includes SD card, USB cable and mouse) with 23" HD LCD monitor and capture software

Packages with Lighting Options

CMO-PK10-AN (Dual LED Illuminator with Fiber optic annular ring light)

CMO-PK10-R3E (NEW high intensity LED ring light)

CMO-PK10-E1 (Quadrant compact LED ring light)

Package Contents

- E-Series 40° Binocular Head with 10x Eyepieces (Pair)
- 1:6 Zoom Body (0.8x-5x)
- 0.5x Achromatic objective Lens
- 76mm focus mount
- Dual arm boom stand
- 0.4x video coupler and beam splitter
- NEW 4K HDMI/USB/WiFi AF camera (Includes SD card, USB cable and mouse) with 26" 4K monitor and capture software.

Packages with Lighting Options

CMO-PK12-AN-E (Dual LED Illuminator with Fiber optic annular ring light)

CMO-PK12-R3E-E (NEW high intensity LED ring light)

CMO-PK12-E1-E (Quadrant compact LED ring light)



E-Series Trinocular Video Specs

Objective Lens	Zoom Body	Video Coupler		working distance
		0.5X		
		MAG	FOV (mm)	
0.5X	1:6	14x-87.3x	35-5.6	187mm
	1:10	14x-139.7x	35-3.5	
1X	1:6	27.9x-174.6x	17.5-2.8	78mm
	1:10	27.9x-279.4x	17.5-1.8	

VIDEO MAGNIFICATION FORMULA

Total Magnification = (Mag. of CCD) X (Mag. of objective zoom range on body) X (Mag. of objective lens) X (Diagonal display)



SCIENSCOPE
INTERNATIONAL