

Visualization

Increase the transparency on the manufacturing process and boost your OEE (Overall Equipment Effectiveness) & KPI (Key Performance Indicator)



Easy Installation

Reasonable Initial Cost

Multi-purpose

<Compact data logger> PetitLOGGER GL100

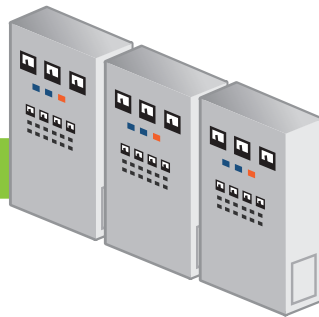
- Flexible input module allows wide range of measurements
- Available the software for PC & Smart devices
- Reliable measurement with useful functions



- Instant flow rate
- Accumulated flow rate
- Pressure
- Power consumption
- Temperature
- Humidity

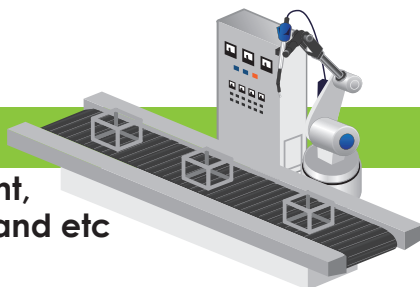
Instrumentation

Pressure, Flow, Logic, Pulse, Power and etc



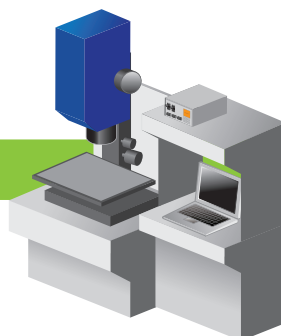
Automation

Displacement, Count, Voltage & Current, and etc



Machine Tool

Temp., Rotation, Count, Vibration, Pressure and etc



Voltage /Temp.

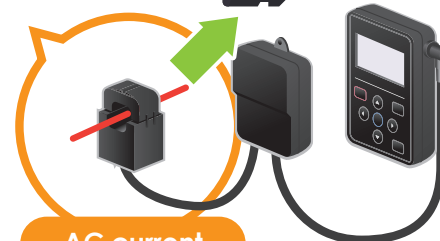


GL100 + GS-4VT



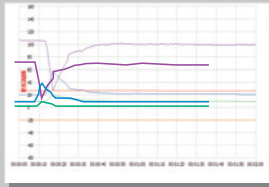
Transfer the collected data to PC

AC current

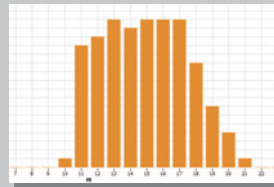


GL100 + GS-DPA + GS-AC50A / 100A / 200A

Visualized by APS (Software)



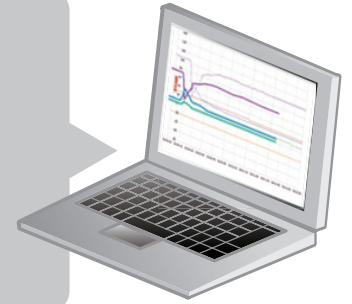
▲ Trend waveform chart



▲ Accumulated bar chart

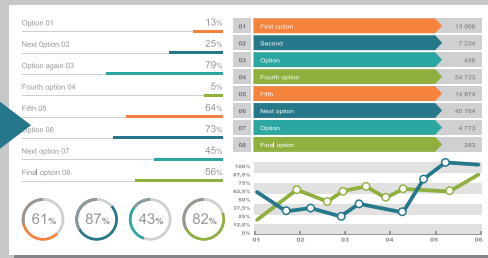


▲ Statistics value & Alarm history



Visualized by customized format (CSV)

▲ Raw Data (CSV)



▲ Visualize (Customize)



Compact data logger

Specifications of GL100-N	
Item	Description
Number of channel	Up to 4 channels (varies by the type of input module used, and measurement type is fixed with each input module.)
Interface to PC	USB 2.0
Functions	<ul style="list-style-type: none"> Real-time data capturing Displays the captured data value to the LCD in real-time and save the monitoring values Set conditions using the Menu setting While using USB port : <ul style="list-style-type: none"> Output captured data in real-time Output the saved data from the internal memory Full control of the GL100 from the PC application software
Display	LCD (backlit monochrome, graphical type)
Storage device	<ul style="list-style-type: none"> Built-in RAM (Approx. 4.9 MB) micro SD memory card * Maximum file size for captured data is 1.9 GB.
Sampling interval	0.5 to 30 seconds and 1 to 60 minutes
Output signal	Alarm (1 channel)
Power source	<ul style="list-style-type: none"> Alkaline battery (AA x 2) USB bus-power (micro USB connector) * The required power capacity is 5V, 1A when AC adapter for microUSB drive is used. AC adapter is not included.
Operating environment	Temperature : -10 °C to 50 °C Humidity : up to 80% RH (non condensed) Water resistance : IP54
External dimension	Approx. 66 x 100 x 27 mm (exclude protrusion)
Weight	Approx. 125 g

Specifications of input module	
Temperature & Humidity sensor (GS-TH)	
Type of measurement	Temperature, and Humidity Accumulated temp. (calculated value), Dew-point temp. (calculated value)
Measuring range	Temperature : -20 to 85 °C Humidity : 0 to 100 % RH
Voltage & Thermocouple input terminal (GS-4VT)	
Number of channel	Analog voltage 4 channels, Logic or Pulse 4 channels (*1)
Measuring range	Voltage : 20mV to 50V, 1-5V FS Thermocouple: K type (-200 to 1370 °C) & T type (-200 to 400 °C) Logic (signal pattern) : 0 to 24 V (common ground) Pulse (count) : Max. 200 counts/sampling interval, accumulating up to 65535 counts
AC Current sensor adapter (GS-DPA-AC)	
Type of measurement	Current Power (calculated value), Electric energy (calculated value)
Application circuit	Single-phase two-wire, Single-phase three-wire system, or Three-phase three-wire
Sensor	Clamp-on current probe (optional), Two (2) sensors are able to connect
Measuring range	50, 100, 200 A RMS (varies by the sensor)

*1 : The measurement type for analog input channels can each be separately selected but also available as set of 4 channels.

- Due to the possibility of equipment or PC failure, the data files on the instrument will not be guaranteed to be held on the memory. Please make a backup of data whenever possible to avoid data loss.
- Brand names and product names listed in this brochure are the trademarks or registered trademarks of their respective owners.
- Items mentioned are subject to change without notice. For more information about product, please check the web site or contact your local representative.

⚠ For using equipment in correctly and safely : Before using it, please read the user manual and then please use it properly in accordance with the description. To avoid malfunction or an electric shock by current leakage or voltage, please ensure a ground connection and use according to the specification.

GRAPHTEC
Graphtec Corporation

503-10 Shinano-cho, Totsuka-ku, Yokohama 244-8503, Japan
Tel : +81-45-825-6250 Fax : +81-45-825-6396

Website <http://www.graphteccorp.com>



GL100_KE10561_2D