

coated performance

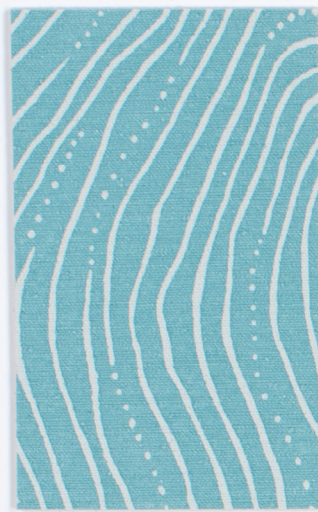
ELEVATE



Topography Pebble



Topography Granite



Topography Elevation



Topography Waterway



Nishiki 2.0 Pearl



Nishiki 2.0 Lantern



Nishiki 2.0 Celadon



Nishiki 2.0 Tranquil



Nishiki 2.0 Silver



Nishiki 2.0 Soba



Nishiki 2.0 Oribe



Nishiki 2.0 Heron



Nishiki 2.0 Obi



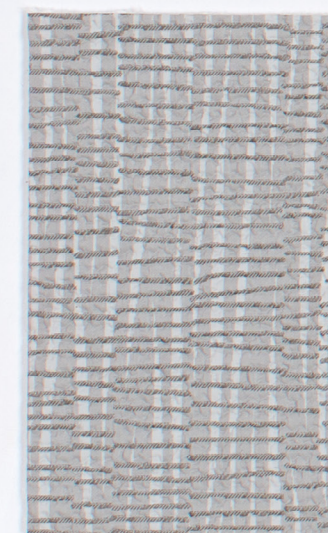
Nishiki 2.0 Lychee



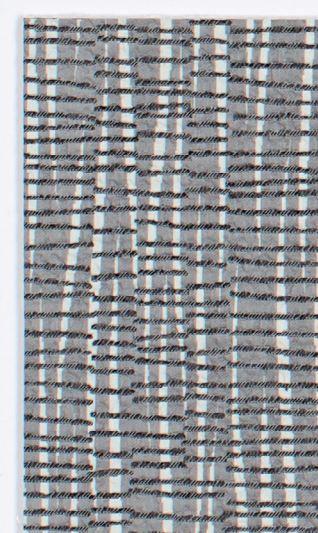
Nishiki 2.0 Peacock



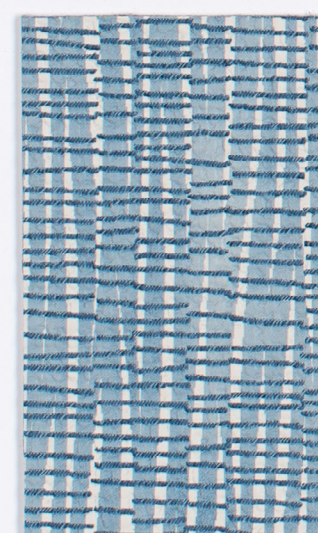
Nishiki 2.0 Shibori



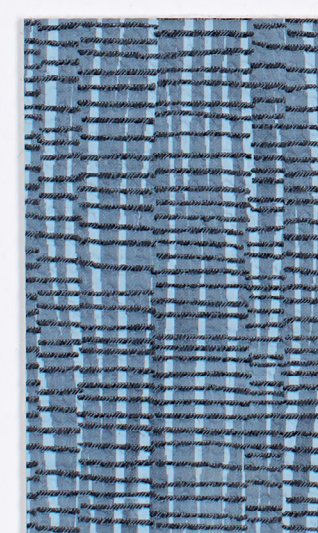
Terra Mineral



Terra Element



Terra Sky



Terra Water



Sea of Clouds Arctic



Sea of Clouds Gulf



Sea of Clouds Atlantic



Sea of Clouds Pacific



Lara Athens



Lara Gate



Lara Bahama



Lara Lake



Lara Pumice



Lara Hearth



Lara Tranquil



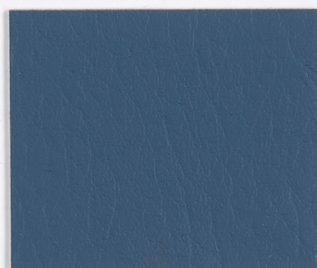
Lara Champion



Lara Stone



Lara Red Earth



Lara Wizard



Lara Mystery



Lara Haze



Lara Tempest



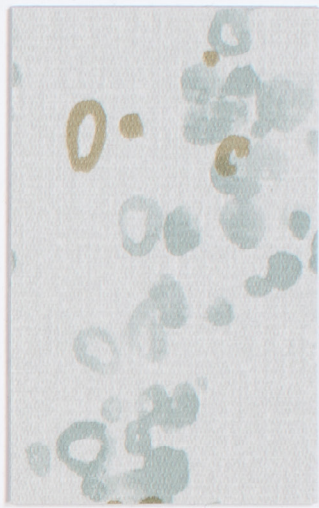
Lara Evening



Lara Pitch



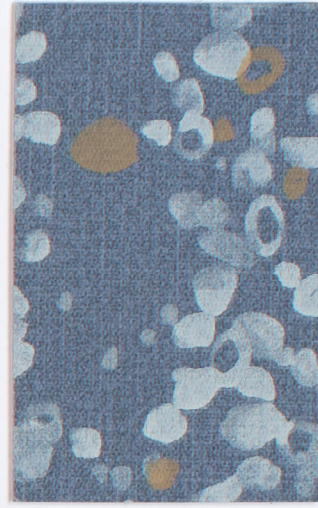
Pebble Trail Calm



Pebble Trail Celadon



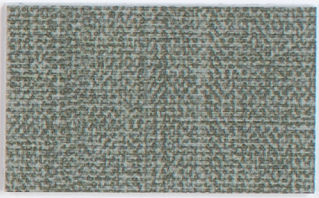
Pebble Trail Tranquil



Pebble Trail Delta



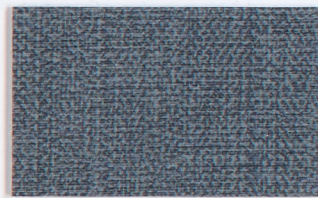
Discovery Meander



Discovery Jaunt



Discovery Wander



Discovery Trip



Discovery Adventure



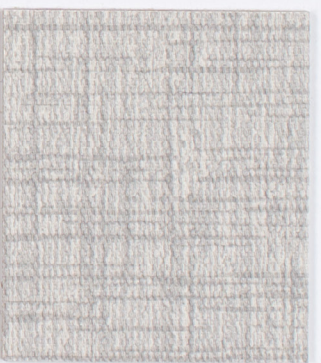
Discovery Saunter



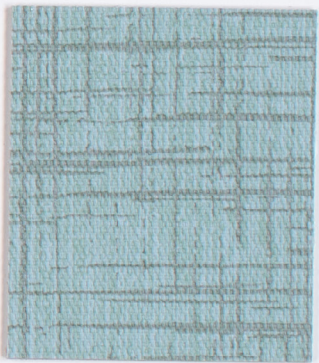
Discovery Sail



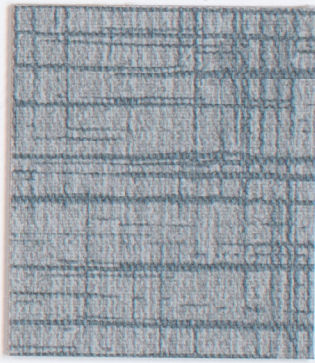
Discovery Galavant



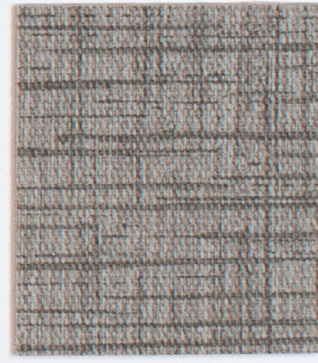
Criss Cross 2.0 Quicksilver



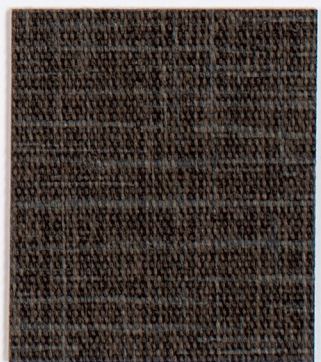
Criss Cross 2.0 Rain



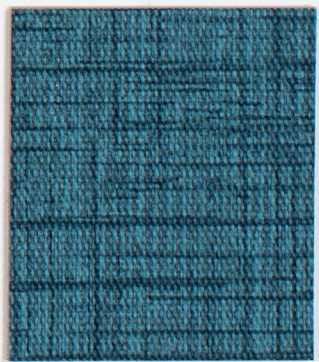
Criss Cross 2.0 Glass



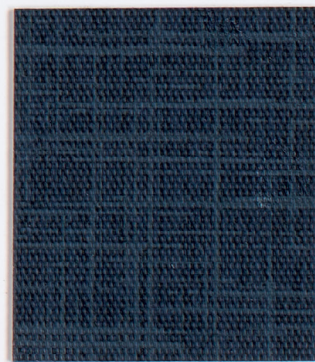
Criss Cross 2.0 Graystone



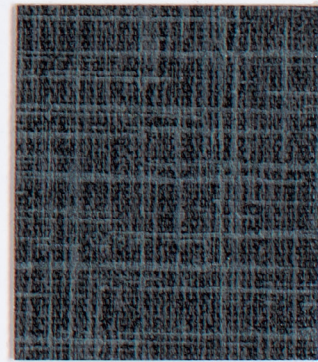
Criss Cross 2.0 Brownie



Criss Cross 2.0 Azure



Criss Cross 2.0 Navy



Criss Cross 2.0 Onyx

PERFORMANCE

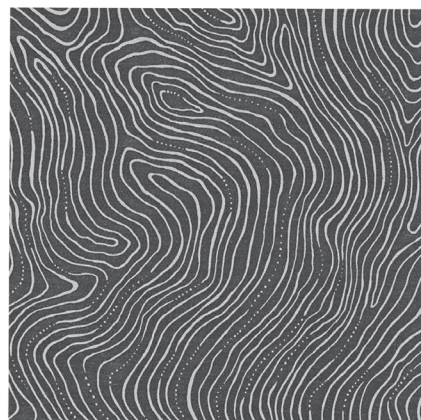
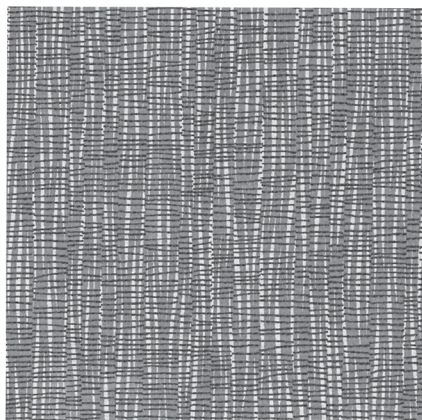
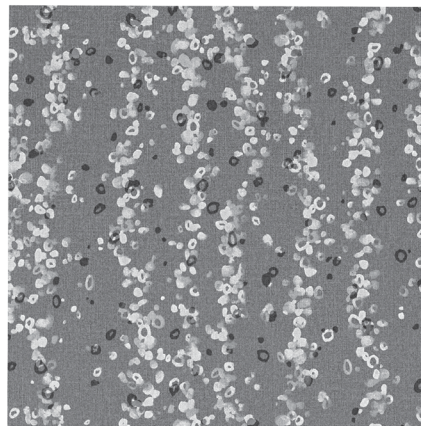
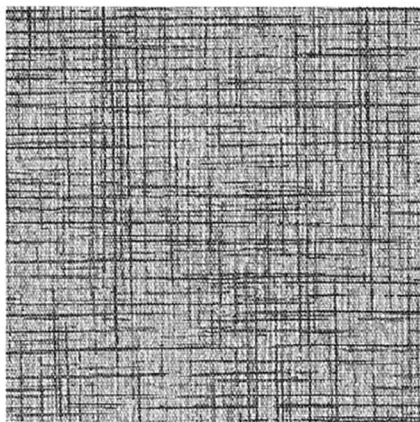
- CFFA-Healthcare-201 Certified
- Fluid-barrier protection
- Extreme durability: 100,000 to 1,300,000 double rubs
- Advanced soil + stain protection
- Denim Stain Resistant

SUSTAINABILITY

- GREENGUARD Gold certified
- REACH and RoHS Compliant
- No PFAS, fluorocarbons or perfluorinated compounds
- No added flame retardants or antimicrobials
- Formulated without Phthalates

CLEANABILITY

- Bleach-solution cleanable
- Tested and approved for compatibility with a multitude of disinfectants and cleaners.
- Individual Care Guides for each pattern are available at cfstinson.com



To request additional cleaning and maintenance information, including verification of a disinfectant being tested for use with these materials, please contact CF Stinson at 800.841.6279 or visit cfstinson.com.

JSI ELEVATE

Pattern	Fiber Content and Finish	Abrasion Resistance ◇ (Wyzenbeek)	Cleaning Code
Criss Cross 2.0	Non-Phthalate Vinyl Surface with Polyester Backing Advanced Soil and Stain Resistant Top Coat	500,000 dr ◇	W-S BC
Discovery	Hyphyn Biodegradable Vinyl Surface with Biodegradable Polyester Backing Advanced Soil and Stain Resistant Top Coat	250,000 dr ◇	W-S BC
Lara	Non-Phthalate Vinyl Surface with Polyester Backing Advanced Soil and Stain Resistant Top Coat + ink resistance	1,300,000 dr ◇	W BC
Nishiki 2.0	Non-Phthalate Vinyl Surface with Polyester Backing Advanced Soil and Stain Resistant Top Coat	250,000 dr ◇	W-S BC
Pebble Trail	Non-Phthalate Vinyl Surface with Polyester Backing Advanced Soil and Stain Resistant Top Coat + ink resistance	100,000 dr ◇	W BC
Sea of Clouds	Non-Phthalate Vinyl produced using a minimum of 50% resin derived from natural raw materials with 100% Post Consumer Recycled Polyester Backing Advanced Soil and Stain Resistant Top Coat + Ink Resistance	100,000 dr ◇	W BC
Terra	Polyurethane made with Polycarbonate Resins with Polyester, Rayon Backing Advanced Soil and Stain Resistant Top Coat + ink resistance	100,000 dr ◇	W BC
Topography	Hyphyn Biodegradable Vinyl Surface with Biodegradable Polyester Backing Advanced Soil and Stain Resistant Top Coat	250,000 dr ◇	W-S BC

All patterns are 54" wide. Dye lots may vary slightly from samples shown.

All patterns meet the flammability* requirements of California Technical Bulletin 117-2013, Section 1, UFAC - Class 1, and NFPA 260 - Class 1. Please visit cfstinson.com for comprehensive test results.

All featured patterns are CFFA-Healthcare-201 Certified

CFFA-Healthcare-201 Certified: This certification provides specifiers confidence in identifying Appropriate Coated Fabrics for Healthcare, Education, and other environments that demand Durability and Cleanability.



These patterns meet or exceed the ACT Performance standards for upholstery.

◇ Wyzenbeek results above 100,000 double rubs have not been shown to be a reliable indicator of increased coated fabric lifespan.



These patterns have achieved GreenGuard Gold Indoor Air Quality Certification.

Additional colorways and memo samples available to order at cfstinson.com.

Cleaning and Maintenance

Refer to cfstinson.com for pattern-specific Care Guides.

Care Guides list specific cleaners and disinfectants approved for use on each individual pattern.

love what you do

JSI is quality furniture for work and life.

225 CLAY STREET
JASPER INDIANA 47546
T: 800.457.4511
JSIFURNITURE.COM

J.ST.ELEV. 1225.1500

Stinson[®]

C.F. Stinson, LLC.
2849 Product Drive
Rochester Hills, MI 48309

W cfstinson.com
P 800 841 6279
F 248 299 3884