



Aura Orange Creative

Design Strategies for Inclusion & Belonging.



Understanding the Orange Creative Aura

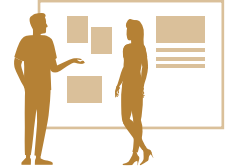
The Creative aura is fueled by curiosity and expression. This persona brings dynamic energy to the workplace, helping spark new ideas, unique interpretations, and unexpected connections. Often acting as explorers, creative catalysts, and collaborative thinkers, they thrive in environments that encourage experimentation, spontaneous interaction, and open-ended possibilities.

This energy aligns with workstyles that value inspiration, expression, and spaces that feel dynamic, kinetic, social, and visually engaging. Rather than following rigid routines or highly structured workflows, they gravitate toward settings that support brainstorming, making, sharing, and creative exchange. Their presence often helps energize teams, support experimentation, and turn ideas into bold concepts.



Collaboration

Spark creative group energy.



Ideation

Generate and explore ideas.

Social Interaction

Feed off shared experiences.



Learning

Stay curious and exploratory.



Design Considerations

Settings that support the Orange Creative aura should feel expressive, layered, and creatively energizing. Spaces with flexible layouts, tactile materials, playful visual moments, and opportunities for movement help encourage experimentation and spontaneous interaction throughout the day. Collaborative studios, concept areas, hospitality-inspired gathering zones, and maker-style environments support creative exchange, while layouts that prioritize adaptability and visual stimulation help ideas evolve naturally through conversation, prototyping, and shared inspiration.



Aura Orange Creative

Workstyle Preferences

Designing for Creative means creating environments that feel playful, creatively charged, and that support quick, impromptu exchanges and the ability to shift easily between independent thinking and group interaction. These individuals often generate ideas through conversation, visual stimulation, and active engagement with the people around them. Settings that support flexibility, brainstorming, sensory inspiration, spontaneous discovery, and informal collaboration help maintain energy and encourage creative momentum.

Preferred Time Allocation by Space Type

These percentages reflect where this persona is most likely to spend their time throughout the day.



WHY THIS WORKS:

- Work + Focus (35%)** encourages innovation, ideation, and making.
- Gather (30%)** supports brainstorming and creative exchange.
- Social (25%)** fosters inspiration and shared energy.
- Recharge (10%)** allows reset and reflection.

Empowering Your People

Performance, creativity, and productivity are shaped by how well the workplace supports different ways of working. When aura types translate into workplace behaviors, they provide a clear lens for designing environments that foster connection, focus, and belonging. Our curated Orange Creative aura idea starters translate these insights into project-ready layouts and specifications, helping designers move projects forward with confidence.

Work + Focus



Collaboration Studio



Concept Zone



Makerspace

Gather



Huddle



Meeting



Transition Zone

Recharge



Break Area



Dining Hall



Respite

Social



Lounge



Hospitality



Reception

