

# Are you looking for a next-gen space and scenario planning tool?

JLLT's Advanced Space Planning Application (ASPA) equips space managers and portfolio planners for today's complex space models. Whether creating a layout for a new building or considering new designs, digitizing the space planning process with ASPA can save you time and generate insights to help you make a good decision.

## Getting Started with ASPA

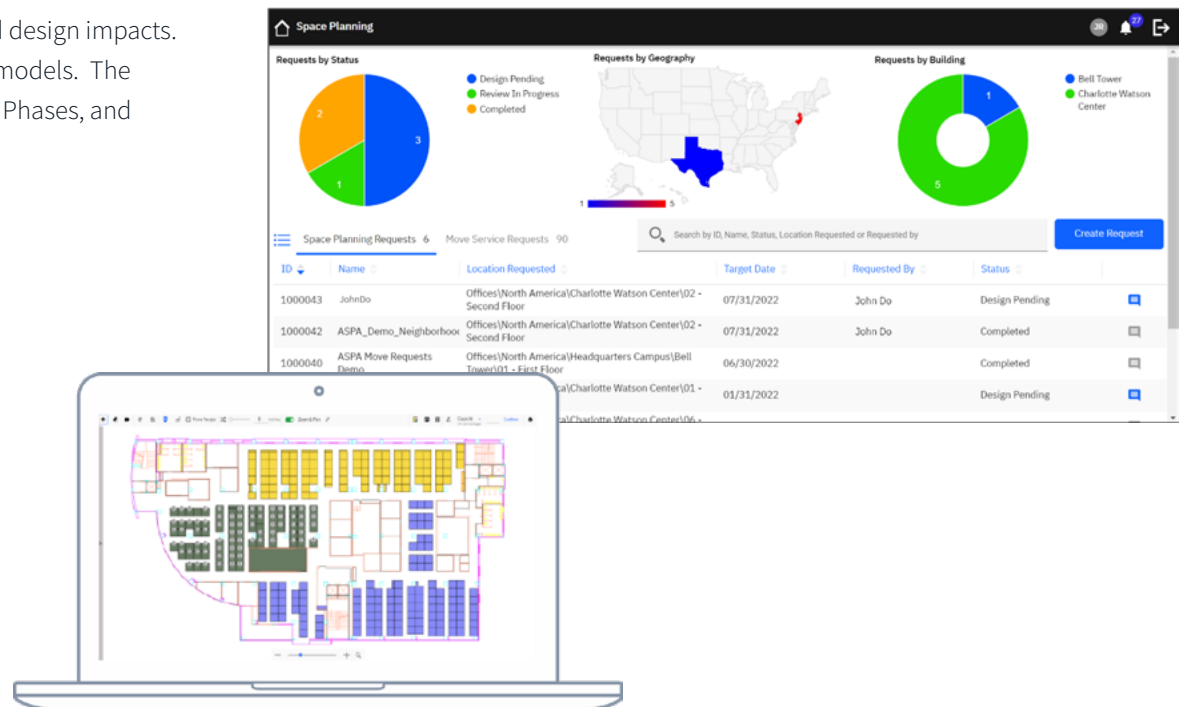
The system creates a snapshot of the current space usage, organization allocation, and seat assignments so that the planner can model out one or more scenarios, redesign them, and make comparisons. Start from the current layout, copy an existing scenario, and even plan for space demand not in the current building.

ASPA uses all of your existing data to speed creation of scenarios

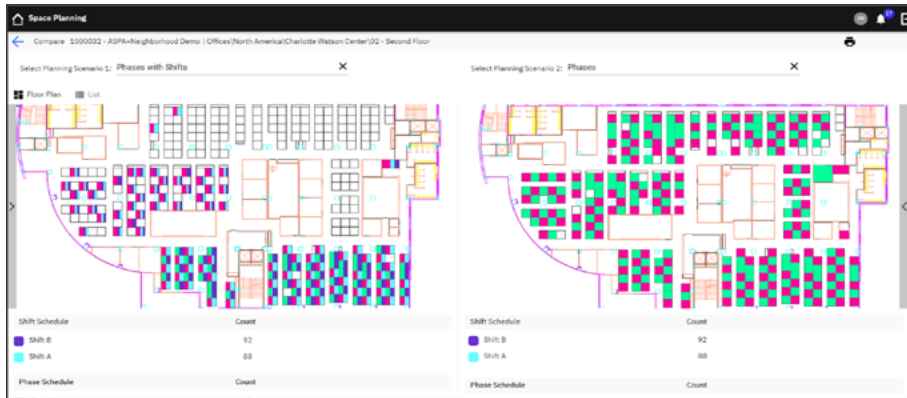
Planners can create many different scenarios and quickly close the door on some designs, then build out others with high fidelity to fully understand design impacts. Plan for traditional space assignments, neighborhoods, or hybrid models. The system accommodates alternative space models, including Shifts, Phases, and COVID-era social distancing.

## Key Features and Benefits

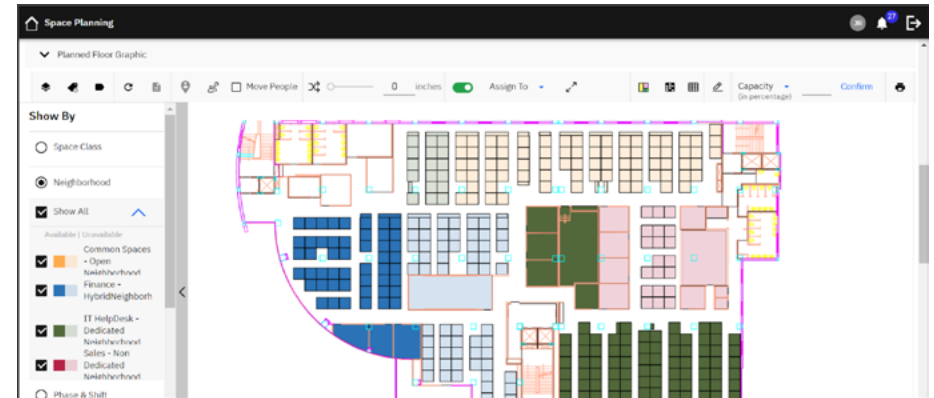
- Create Neighborhoods with free addressing without using CAD software.
- Balance co-location by viewing allocations at various levels of the organization.
- Track, update, and collaborate on scenarios.
- Access meaningful reports with interactive dashboards.
- Leverage existing CAD investments and architectural design plans when needed.
- Support your business processes with a configurable approval process.
- Quickly generate a Move Project once a design is selected.



# ASPA helps you organize your space for optimal utilization



Manage people on the floor according to Phase/Shift/Remote working. Compare multiple scenarios to make decisions.



Manage different neighborhoods and activity-based work areas on the floor. Plan a location for people by simply moving them with the click of a mouse. Implement these scenarios once space managers approve.