



Available for lease

Reactorweg 189 , Utrecht



Reactorweg 189

The property at 189 Reactorweg in Utrecht is a commercial property with approximately 1,641 sqm warehouse space. The property has two loading docks and toilet facilities. The efficient layout is very suitable for bulk storage. In view of the location of the industrial property and the amount of outdoor space, the preference goes to an organization that does not have too many transport movements.

Location

This property is located on business park Lage Weide in Utrecht and is easily accessible due to its location on the A2 motorway. This business park is the largest business park in Utrecht and it is known for its multimodal character (road, water and rail).

The business park is home to well-known companies such as: HEMA, Kuehne+Nagel, DHL, WE Fashion, Picnic and Van Moof.

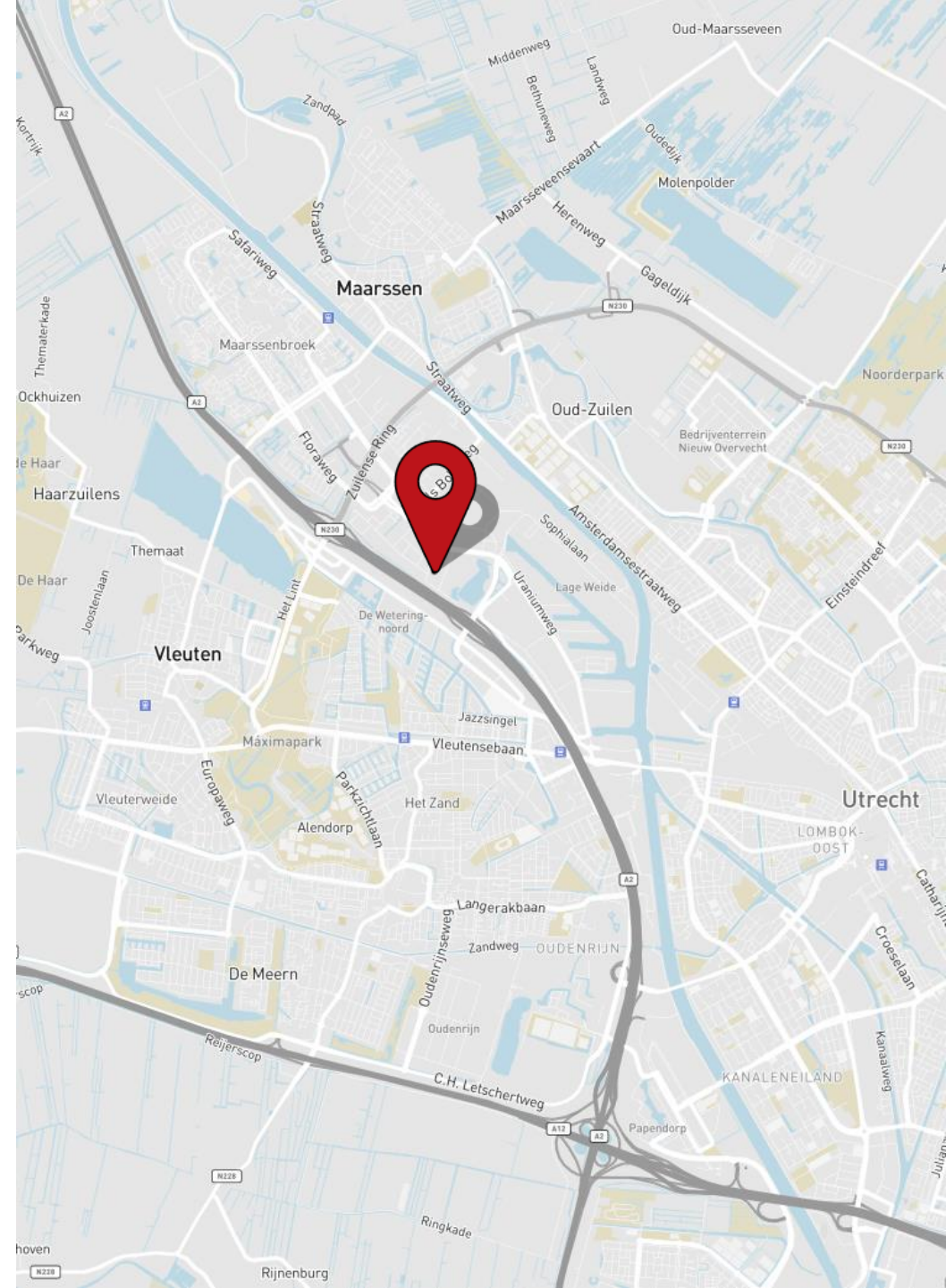
Accessibility

Car

Excellent accessibility due to its location near the A2 motorway (Amsterdam-Den Bosch) and the N230 (Zuilense Ring). This good accessibility is enhanced by the A7 (Lage Weide) exit with the A2 motorway, within a few minutes by car.

Public transportation

The building is also easily accessible by public transport; the bus stop is within walking distance of the building. From the NS station Maarsse and Utrecht CS buses go to the industrial Lage Weide.





Available space

A total of 1,641 sq.m. warehouse space is currently available for rent

Parking

Sufficient parking space on the site.

Delivery level

The property will be delivered in the current, used state, equipped with the following facilities:

- Clear height of approximately 7 meters;
- Maximum floor load of 1,500 kg/sq.m.;
- 2 loading docks with levellers;
- Concrete floor;
- Fluorescent lighting;
- Toilet facilities;
- Power connection;
- Heaters;
- Fire prevention equipment.



Rent

Warehouse: € 65.00 per sq.m. per year

The price above is excluding VAT and service charges.

Service charges

To be determined.

Lease term

In consultation.

Commencement date

In consultation.

Lease agreement

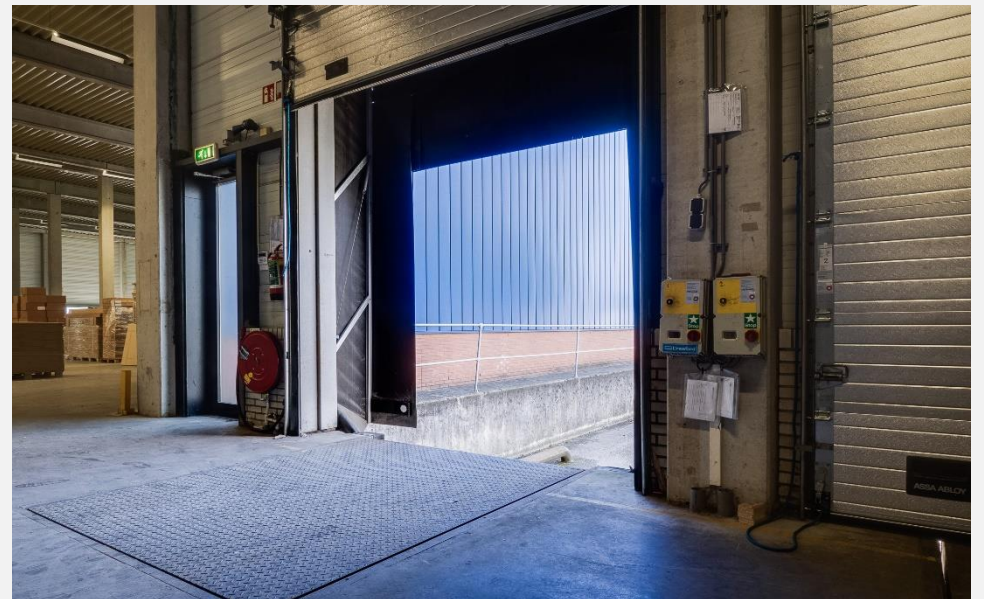
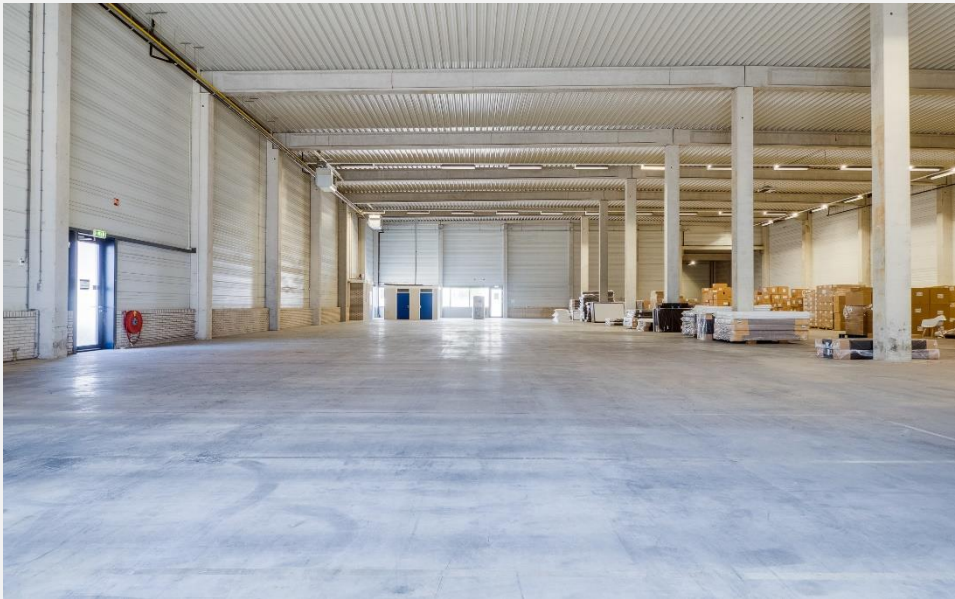
Lease of Office Accommodation and other Commercial Accommodation established by the Real Estate Council (ROZ) 2015.

VAT

All amounts exclude service costs and Value Added Tax (VAT).



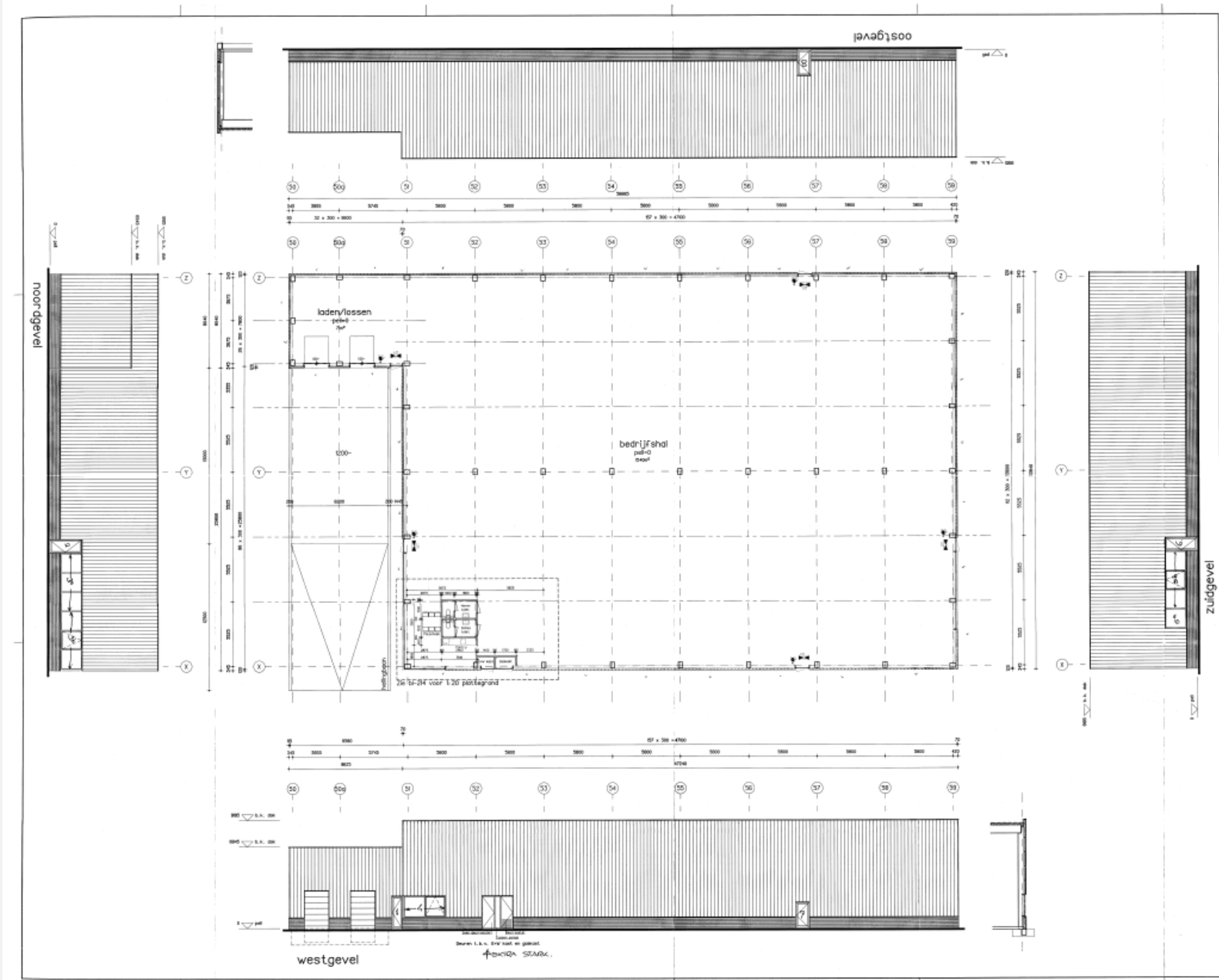
Pictures



Pictures



Floor plan



Contact



JLL Industrial & Logistics
Parnassusweg 727
1077 DG Amsterdam
020 5405 405
www.jll.nl

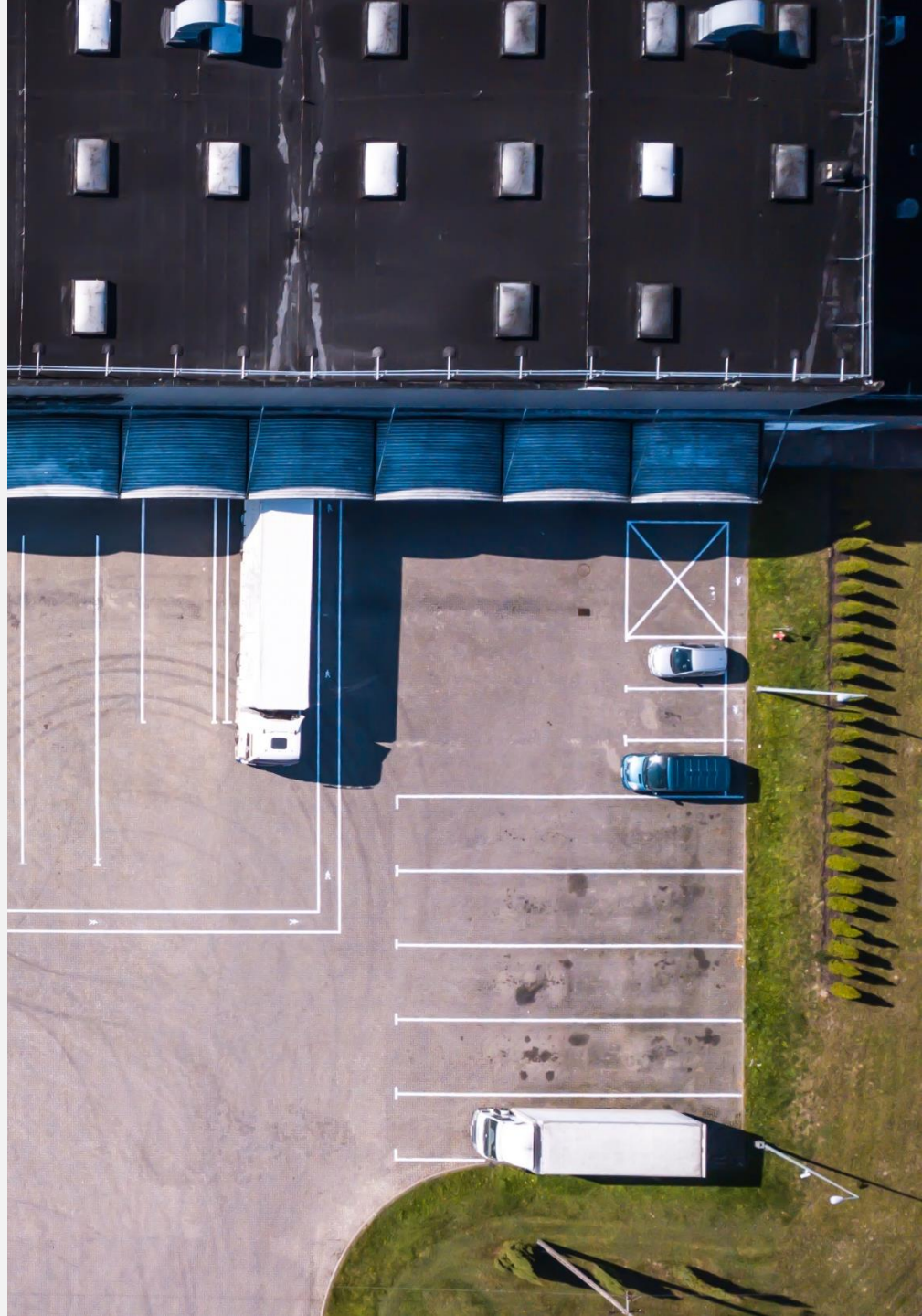
Jordy Verhoeven

Head of Agency / Industrial & Logistics
Jordy.Verhoeven@eu.jll.com
+31 (0)6 50 67 11 21



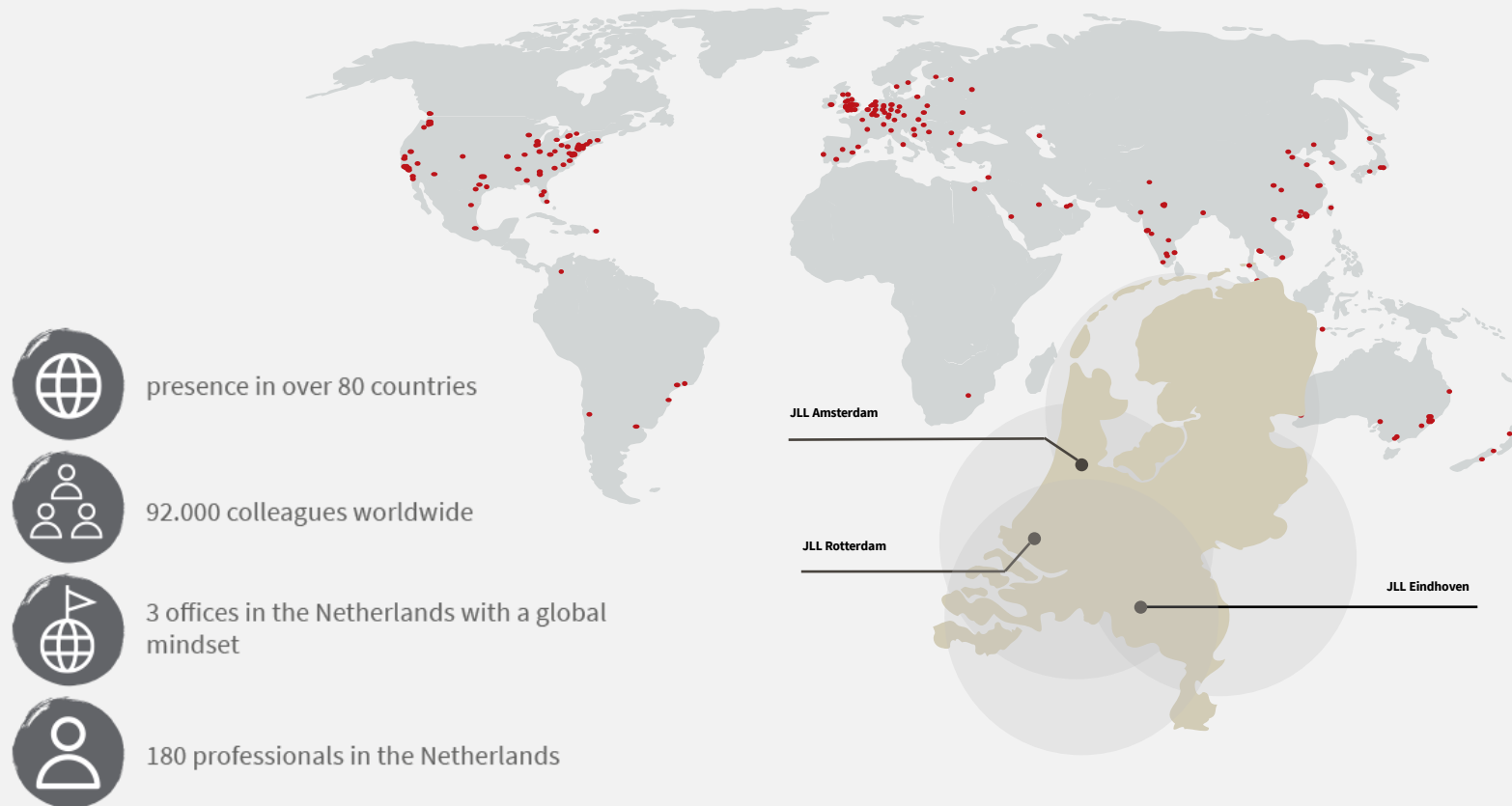
Diederik Nijhuis

Consultant - Agency / Industrial & Logistics
Diederik.Nijhuis@eu.jll.com
+31 (0)6 20 46 65 91



About JLL

JLL (NYSE: JLL) is a leading professional services firm that specializes in real estate and investment management. JLL shapes the future of real estate for a better world by using the most advanced technology to create rewarding opportunities, amazing spaces and sustainable real estate solutions for our clients, our people and our communities. JLL is a Fortune 500 company with annual revenue of \$19.4 billion, operations in over 80 countries and a global workforce of more than 100,000 as of March 31, 2022. JLL is the brand name, and a registered trademark, of Jones Lang LaSalle Incorporated. For further information, visit jll.com.



DISCLAIMER
©2022 Jones Lang LaSalle IP, Inc. All rights reserved. The information contained in this document is proprietary to Jones Lang LaSalle and shall be used solely for the purposes of evaluating this proposal. All such documentation and information remains the property of Jones Lang LaSalle and shall be kept confidential. Reproduction of any part of this document is authorized only to the extent necessary for its evaluation. It is not to be shown to any third party without the prior written authorization of Jones Lang LaSalle. All information contained here in is from sources deemed reliable; however, no representation or warranty is made as to the accuracy thereof.

ETHISPHERE®
WORLD'S MOST
ETHICAL
COMPANIES®
2008-2021

FORTUNE
WORLD'S MOST
ADMIRABLE
COMPANIES™ **2021**

IAOP GLOBAL
OUTSOURCING 100