



For rent

Daltonlaan 500,
Utrecht



Property description

The office building at Daltonlaan 500 is located on the "Dalton Office Park". This office park consists of a total of six office buildings centered around a water feature. These buildings are each designed by renowned Dutch architectural firms with their own signature: Frank Roodbeen, Cees Dam, Moshé Zwarts, Abe Bonnema, Fred Temme and Pieter Trimp. The urban development plan was designed by T&T Design from Gouda. The office buildings at "Dalton Office Park" have a total surface area of approximately 31,193 m² of office space with a total of approximately 785 parking spaces.

Rent

Office Space:

€ 125.00 per sq m lfa per year, excluding VAT.

Parking Place:

€ 650.00 per place per year, excluding VAT

Service charges

€ 35.00 per sq.m. per year.

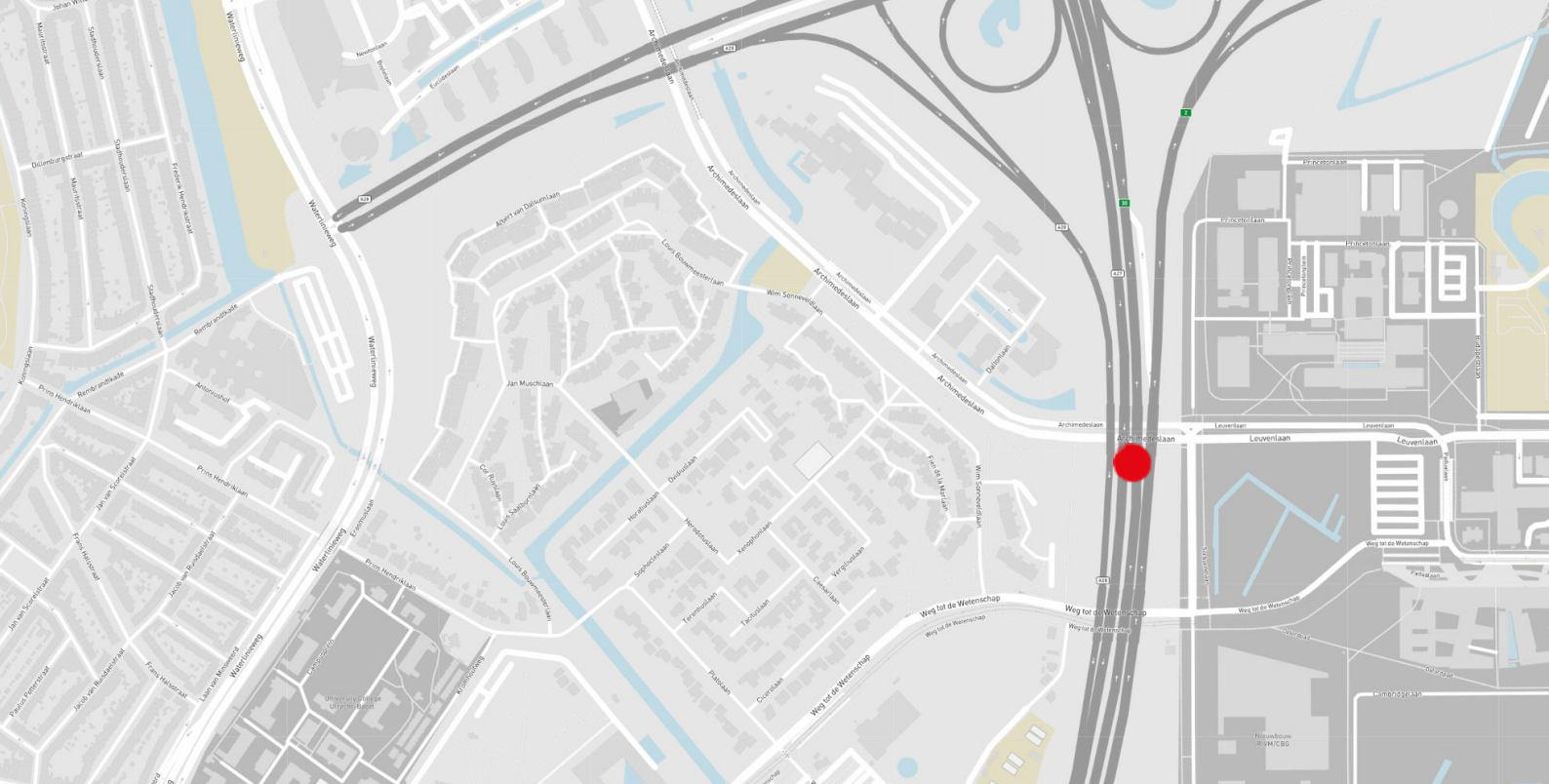
Available spaces

The availability of this building is approximately 6.505 sq.m. lfa. For rent available:

9 th floor	214 sq. m. lfa.
10 th floor	214 sq. m. lfa.
Total	1,086 sq. m lfa.

Parking

There are a total of 785 parking spaces.



Location

The office park has a strategic location on the east side of Utrecht near Rijnsweerd office park. The park is characterized by the proximity of the Rijnsweerd junction, where the A27 / A28 motorways intersect on the one hand and the center of Utrecht on the other. The Uithof is also nearby, where among other things the University of Utrecht, the University Medical Center, the Hubrecht and the Utrecht Science Park are located.

Accessibility

By car

Due to its unique location in the basin of the Rijnsweerd junction (A27 / A28), accessibility is excellent. Via the N222, the Pythagoraslaan and the Archimedeslaan, you can reach Dalton Office Park in a matter of minutes.

Public transport

A bus stop is located opposite the "Dalton Office Park". Bus line 28 runs every 10 minutes to Utrecht Central Station in approximately 12 minutes.



Lease term

5 years with 5 year renewal period.

Commencement date

To be discussed.

VAT

All amounts exclude service costs and Value Added Tax (VAT).

Lease agreement

Lease of Office Accommodation and other Commercial Accommodation established by the Real Estate Council (ROZ) 2015.

Contact

Barthold van Hasselt

Head of Agency / Offices Utrecht

Barthold.van-Hasselt@eu.jll.com

+31 6 20 42 31 86



Roy Foeken

Office Agency Utrecht

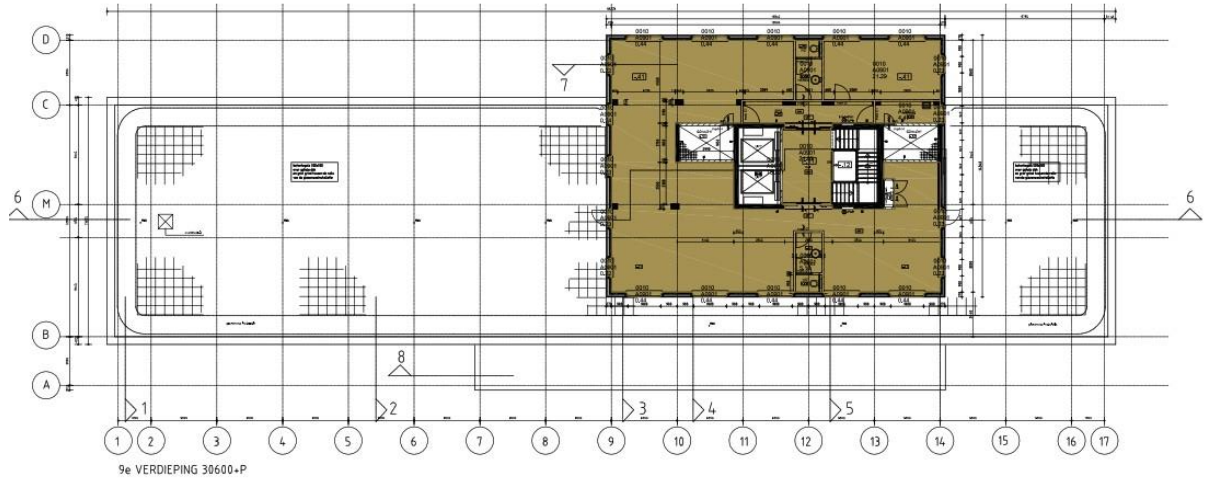
Roy.Foeken@eu.jll.com

+31 6 27 54 87 51

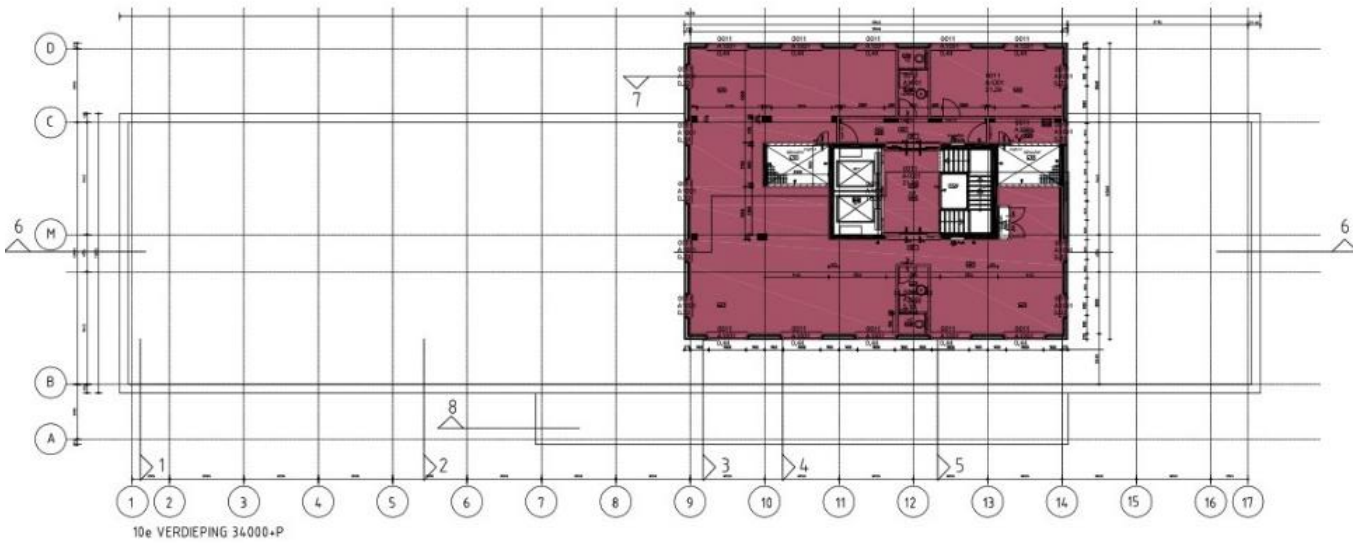




9th floor

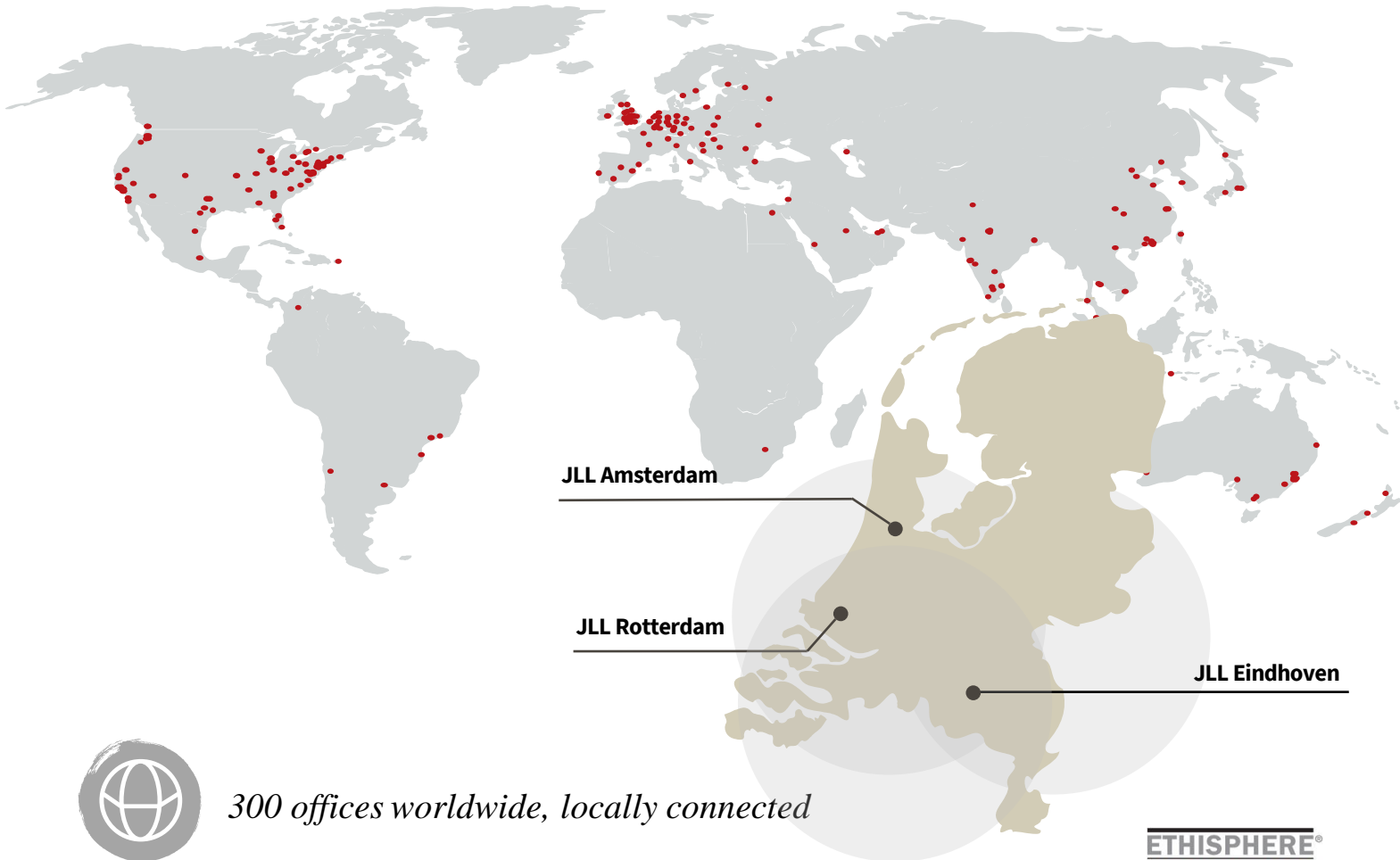


10th floor



About JLL

JLL is a leading professional services firm that specializes in real estate and investment management. Our vision is to reimagine the world of real estate, creating rewarding opportunities and amazing spaces where people can achieve their ambitions. In doing so, we will build a better tomorrow for our clients, our people and our communities. JLL is a Fortune 500 company with annual revenue of \$16.3 billion, operations in over 80 countries and a global workforce of over 92,000 as of June 30, 2019. JLL is the brand name, and a registered trademark, of Jones Lang LaSalle Incorporated. For further information, visit jll.com



300 offices worldwide, locally connected



83.000 colleagues worldwide



3 offices in the Netherlands, with a global mindset



170 professionals in The Netherlands



Five Real Estate Markets (Offices, Industrial & Logistics, Retail, Living, Health care)

ETHISPHERE[®]
WORLD'S MOST
ETHICAL
COMPANIES[®]
2008 - 2022

FORTUNE
WORLD'S MOST
ADMIRER
COMPANIES[®] 2021

IAOP GLOBAL
OUTSOURCING 100

ISO
9001
QUALITY
ASSURANCE

DISCLAIMER

©2019 Jones Lang LaSalle IP, Inc. All rights reserved. The information contained in this document is proprietary to Jones Lang LaSalle and shall be used solely for the purposes of evaluating this proposal. All such documentation and information remains the property of Jones Lang LaSalle and shall be kept confidential. Reproduction of any part of this document is authorized only to the extent necessary for its evaluation. It is not to be shown to any third party without the prior written authorization of Jones Lang LaSalle. All information contained here in is from sources deemed reliable; however, no representation or warranty is made as to the accuracy thereof.

