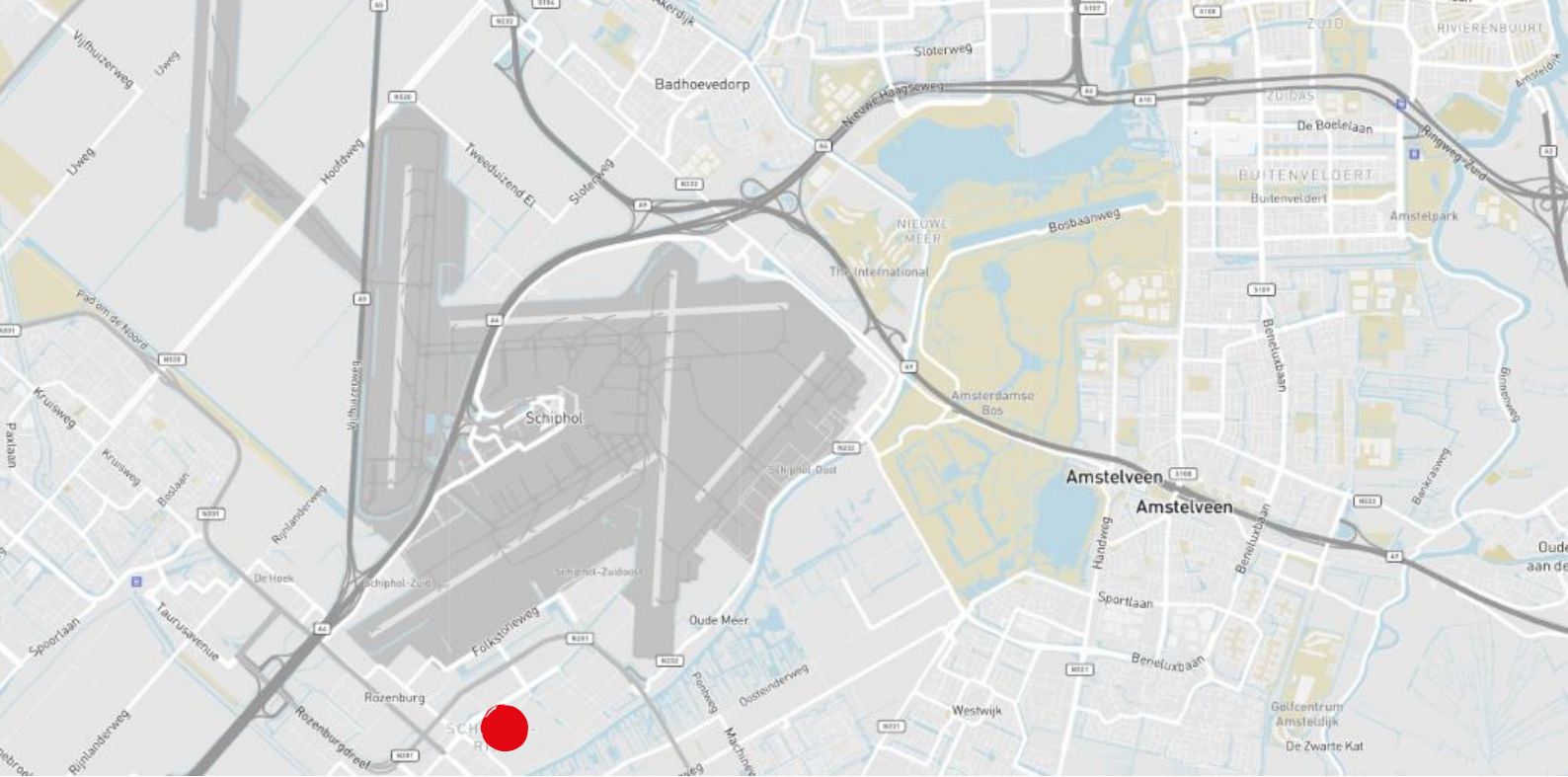




For rent

Boeingavenue 50 - 68,
Schiphol



Property description

Today, a modern office is more than just a workplace. At SQM Offices you enter through the entrance at a central meeting place. From there you walk towards the modern meeting rooms and the light and open spaces to relax or unwind.

The office building consists of a total of 5,062.67 m² l.f.a. spread over five floors and is part of the SQM Offices concept. The unique SQM membership offers SQM Offices its customers the opportunity to make unlimited use of the meeting rooms and services at all locations throughout the Netherlands. The locations have shared meeting facilities, sports facilities and a grab & go concept. There are two SQM Offices locations in Schiphol-Rijk, including the Boeingavenue 50-68. Currently there is approximately 2,139 m² lfa at this location. office space available, spread over the first and second floor.

Location

Richport office park is an office park in a very well-kept environment with spacious water features and accompanying planting. There are three hotels in the park, including the Radisson Blu hotel with various meeting facilities and a bar / restaurant. The hotels have shuttle bus services to and from Schiphol Airport. The CompaNanny company has a branch with a day-care center and after-school care (compananny.nl). Richport office park also has a park management organization. A characteristic of this is the coordinated, joint use of all facilities on an industrial estate. Services such as the maintenance of the public and private areas, the green and water facilities and security are provided by the park management on behalf of the Cooperative.

Accessibility

The office park is located at the foot of the exit of the highway A4 / A44 / A5 in the direction of Amsterdam, Haarlem, The Hague and Rotterdam and on the provincial road N201. In addition, the location is easily accessible from the A9 and from Amstelveen. Schiphol Airport can be reached within a few minutes by car and public transport. Public transport to and from the Richport Office Park is provided by ConnexXion and Sternet. Buses run every 7 minutes during rush hour and every 15 minutes outside rush hour. There are several stops in the park. More information can be found on connexion.nl.

It is expected that by the end of 2021 a HOV (High-quality Public Transport) transferium will be realized at the entrance of the park (crossing Fokkerweg / Kruisweg), which will further optimize the accessibility of Schiphol-Rijk.

After completion, a bus will stop at Knooppunt Zuid approximately every 2 minutes, from which the entire Schiphol, Amsterdam and Hoofddorp region will be accessible via (partly) autonomous bus lanes. More information can be found at transportregio.nl.



Available spaces

The availability of this building is approximately 2,139 sq. m. lfa. divided as follows:

Ground floor	164 sq. m. lfa.
2 nd floor	987 sq. m. lfa.
3 rd floor	988 sq. m. lfa.
Total	2,139 sq. m. lfa.

Parking

There are 66 parking spaces available on the adjacent parking spot. The parking ratio is 1:37.

Rent

Office space:

€ 135.- per sq m lfa per year, excluding VAT.

Parking place:

€ 750 per place per year, excluding VAT

Service charges

€ 35.- per sq. m. lfa. per year, excluding VAT.

Delivery level

The property is delivered in a shell condition, including:

- Industrial ceiling with lighting fixtures;
- Sanitary facilities;
- Pantry;
- Turn-key is negotiable;
- Mechanical ventilation with top cooling;
- Energy label A.

Amenities

The property offers, among other things, the following facilities: is delivered in a hull condition, including:

- Coffee corner;
- Meeting facilities;
- Sports facility;
- Cinema room for meetings or similar activities;
- SQM membership with access to the services & facilities of various locations.



Lease term

5 years with 5 year renewal period. The notice period is 12 months.

Commencement date

To be discussed.

VAT

All amounts exclude service costs and Value Added Tax (VAT).

Lease agreement

Lease of Office Accommodation and other Commercial Accommodation established by the Real Estate Council (ROZ) 2015.

Contact

Sophie Fabius

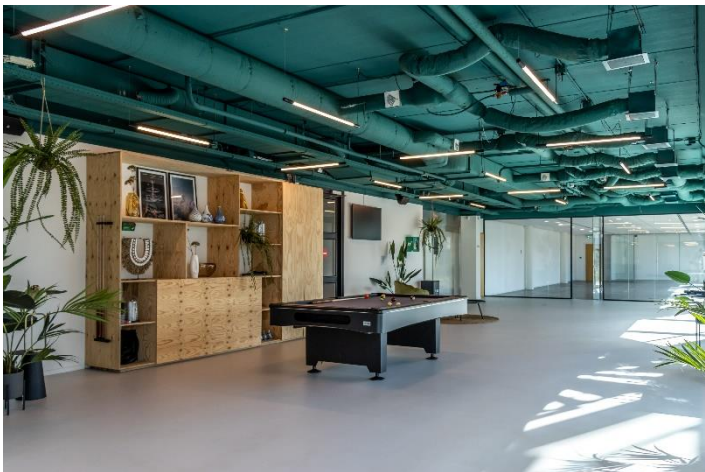
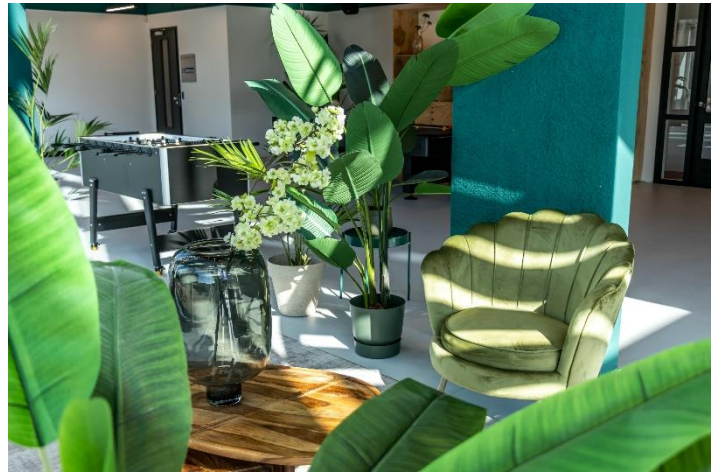
Office Agency Amsterdam
Sophie.Fabius@eu.jll.com
+316 82 50 26 65

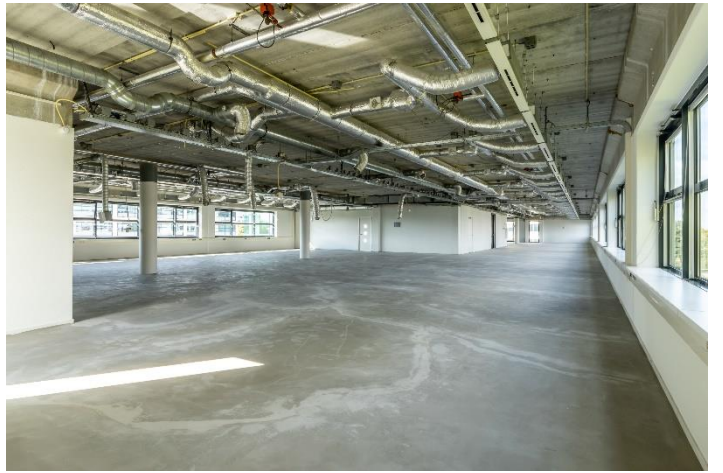


Ernest Wehry

Office Agency Amsterdam
Ernest.Wehry@eu.jll.com
+31 6 57 00 35 61





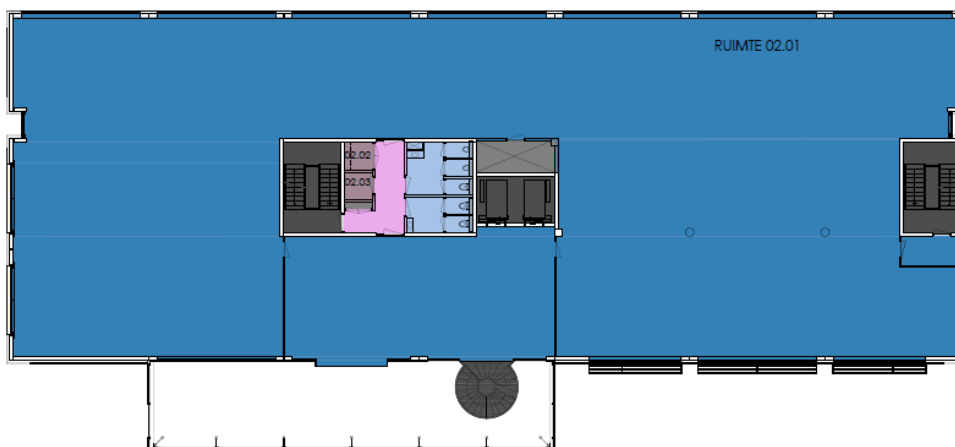




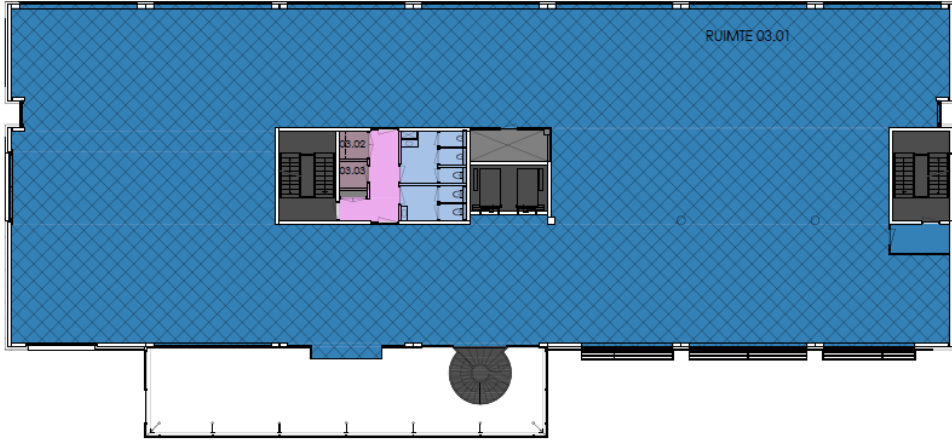
Plattegronden



Ground floor



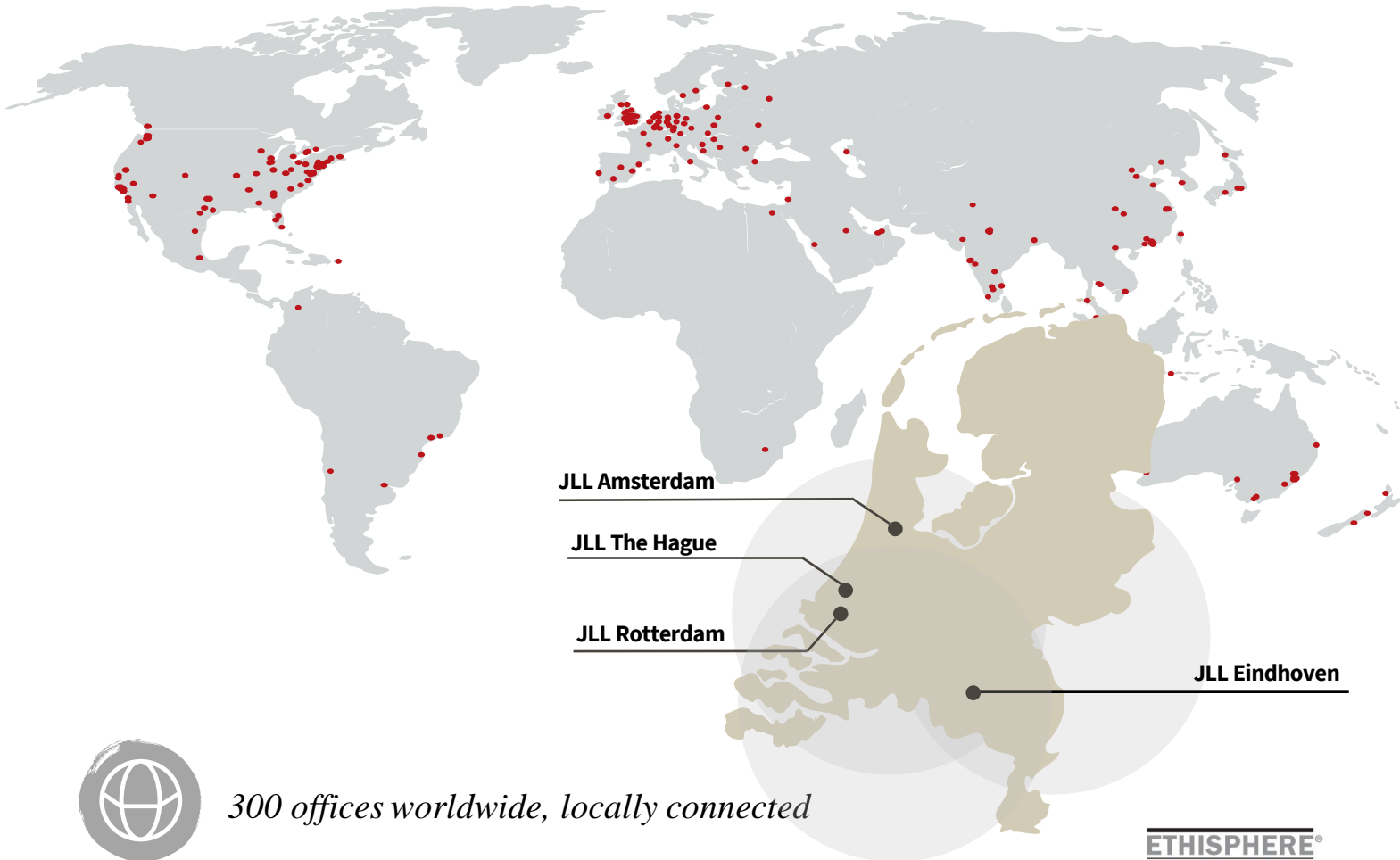
1st floor



2nd floor

About JLL

JLL (NYSE: JLL) is a leading professional services firm that specializes in real estate and investment management. JLL shapes the future of real estate for a better world by using the most advanced technology to create rewarding opportunities, amazing spaces and sustainable real estate solutions for our clients, our people and our communities. JLL is a Fortune 500 company with annual revenue of \$19.4 billion, operations in over 80 countries and a global workforce of more than 100,000 as of March 31, 2022. JLL is the brand name, and a registered trademark, of Jones Lang LaSalle Incorporated. For further information, visit jll.com.



300 offices worldwide, locally connected



100.000 colleagues worldwide



4 offices in the Netherlands, with a global mindset



170 professionals in The Netherlands



Five Real Estate Markets (Offices, Industrial & Logistics, Retail, Living, Health care)

ETHISPHERE[®]
WORLD'S MOST
ETHICAL
COMPANIES[®]
2008 - 2022

FORTUNE
WORLD'S MOST
ADMIRER
COMPANIES[®] 2021

IAOP GLOBAL
OUTSOURCING 100

ISO
9001
QUALITY
ASSURANCE

DISCLAIMER

©2022 Jones Lang LaSalle IP, Inc. All rights reserved. The information contained in this document is proprietary to Jones Lang LaSalle and shall be used solely for the purposes of evaluating this proposal. All such documentation and information remains the property of Jones Lang LaSalle and shall be kept confidential. Reproduction of any part of this document is authorized only to the extent necessary for its evaluation. It is not to be shown to any third party without the prior written authorization of Jones Lang LaSalle. All information contained here in is from sources deemed reliable; however, no representation or warranty is made as to the accuracy thereof.

