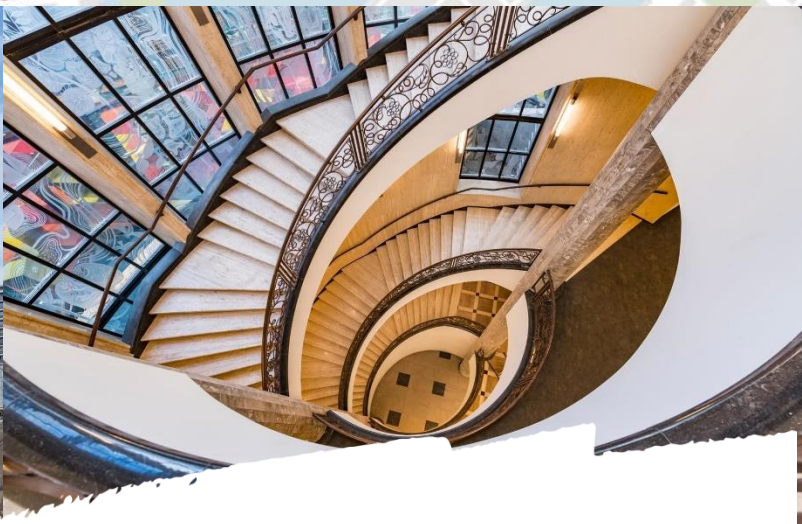
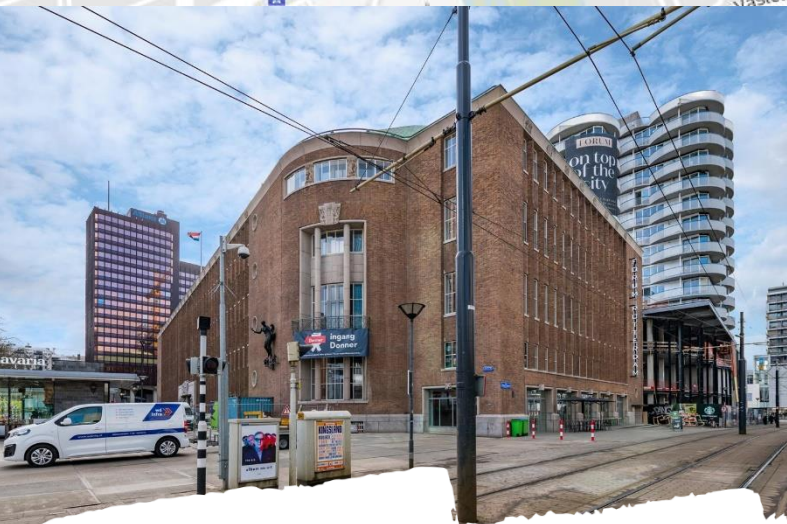
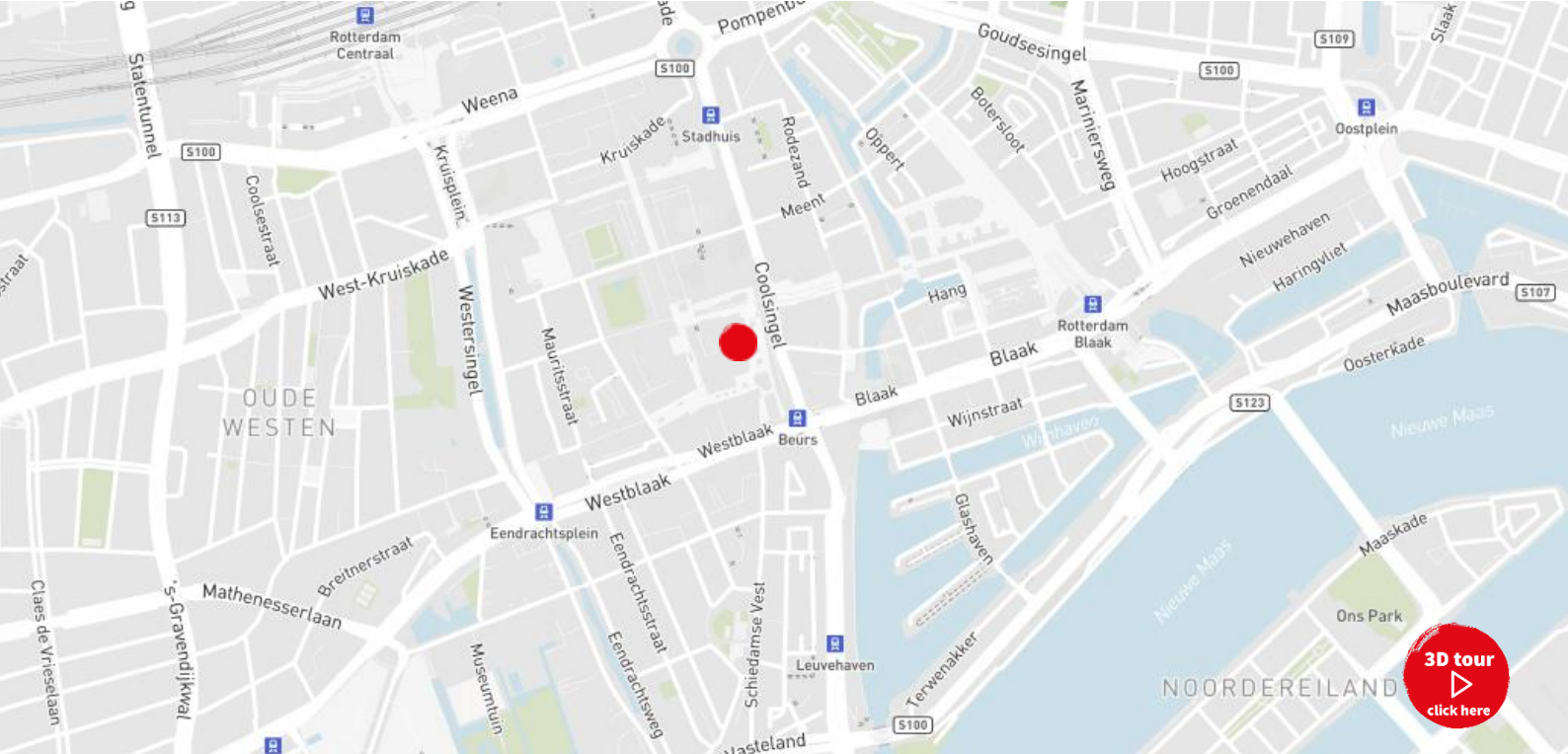




For rent

FORUM

Coolsingel 119,
Rotterdam



FORUM

The monumental former bank building at the Coolsingel has completely been redeveloped and is renamed FORUM, located in the heart of the CBD of Rotterdam. The building is located at a prominent location at the Coolsingel, opposite the WTC and in the middle of the shopping area Lijnbaan and the Koopgoot. The office space is divided over the 3rd, 4th and 5th floor. For lease we can offer the 5th floor.

Essence of Forum

FORUM is a mixed-use development of Multi Development Corporation and consisting of office space, retail, food & beverage, and residential units.

The total FORUM development comprises approx. 60,000 sq m including a 17,000 sq m flagship store of Primark.

Starbucks, Happy Italy and Bagel & Beans have leased the food & beverage space.

Location

The building is situated in the middle of the city centre of Rotterdam with all possible amenities at walking distance.

OMA en Wessel de Jonge Architecten

The goal of the architects was to guarantee the highest quality. Wessel de Jonge made far-reaching changes to the monumental building to restore it to its former glory. OMA is responsible for the design of the new retail area's and the residential tower.





Accessibility

Car

FORUM is good accessible by car from the ring Rotterdam (A13, A16 & A20) which gives access to Amsterdam/The Hague, Utrecht and Antwerp/Paris. Rotterdam The Hague Airport can be reached in 15 minutes by car.

Public transport

FORUM is easily accessible by public transport. There are bus and tram stops in front of the building. The Beurs / Churchillplein metro station is opposite of Forum and provides connection to all metro lines and offers a direct connection to Rotterdam Central Station and train stations Rotterdam Blaak and Rotterdam Alexander.

State of delivery

Office space

This office space will be renovated by the Lessor and will be delivered including finished walls, suspended ceilings including lighting and sanitary facilities per floor.

Availability

Office space 5th floor

Approx. 1,446,05 sq m lfa

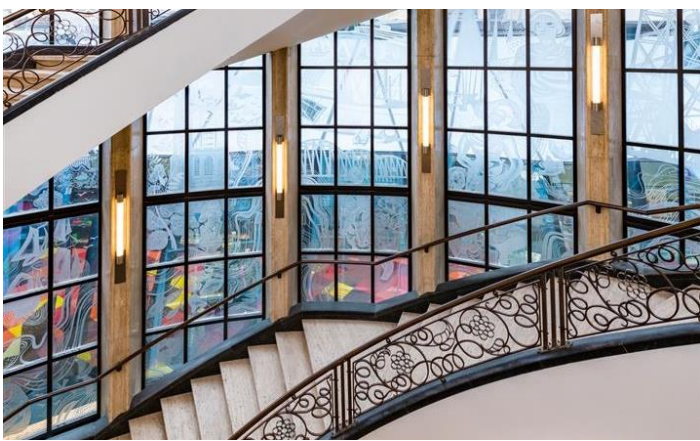
Indicative rent level

Office space 5th floor:

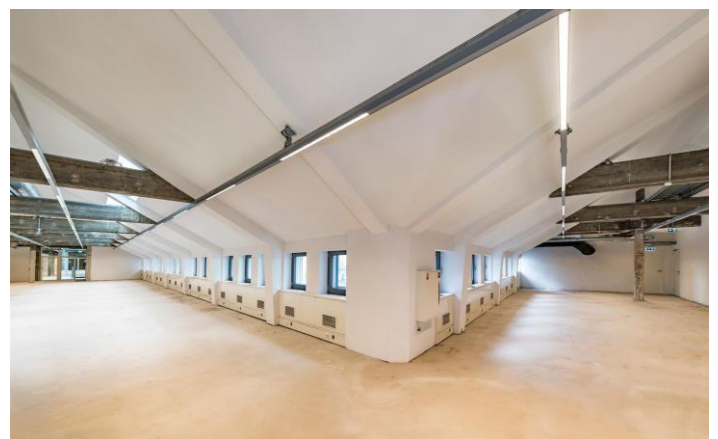
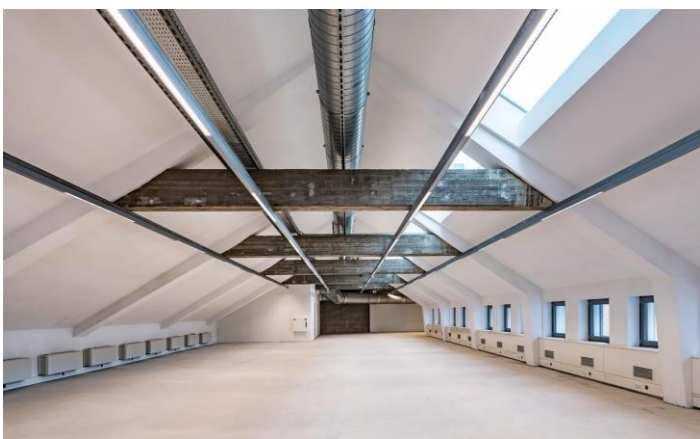
€ 200.00 per sq m per year

Contact

Christiaan de Rooij
Office Agency Rotterdam
Christiaan.de-rooij@eu.jll.com
+31 651282883







Artist impressions

5th Floor

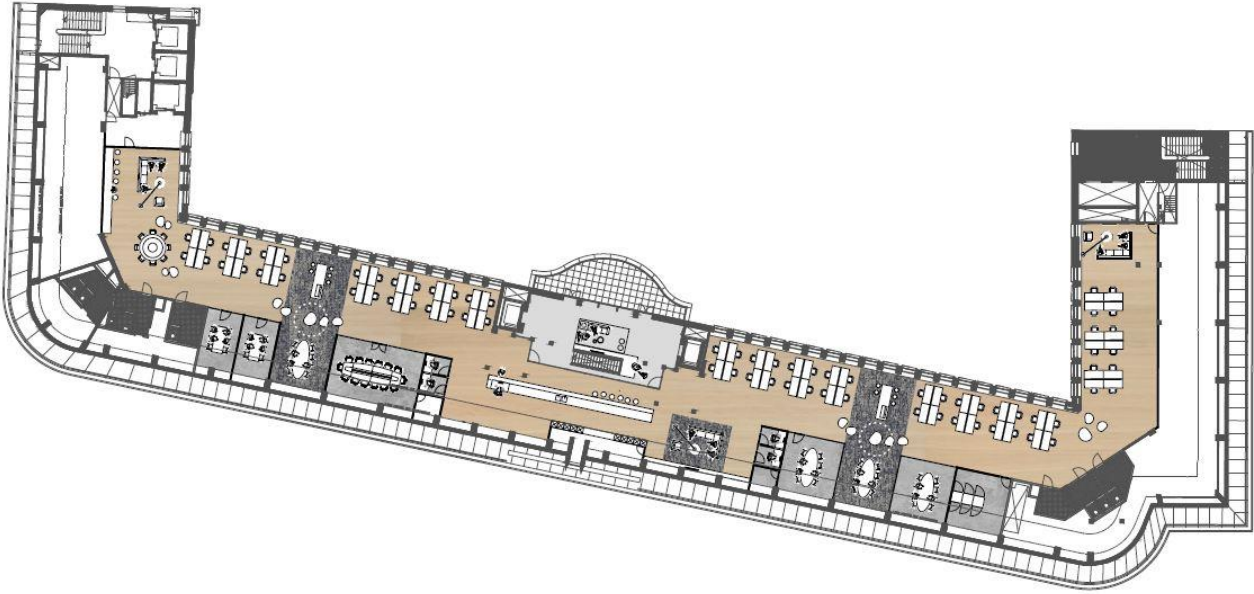


5th Floor



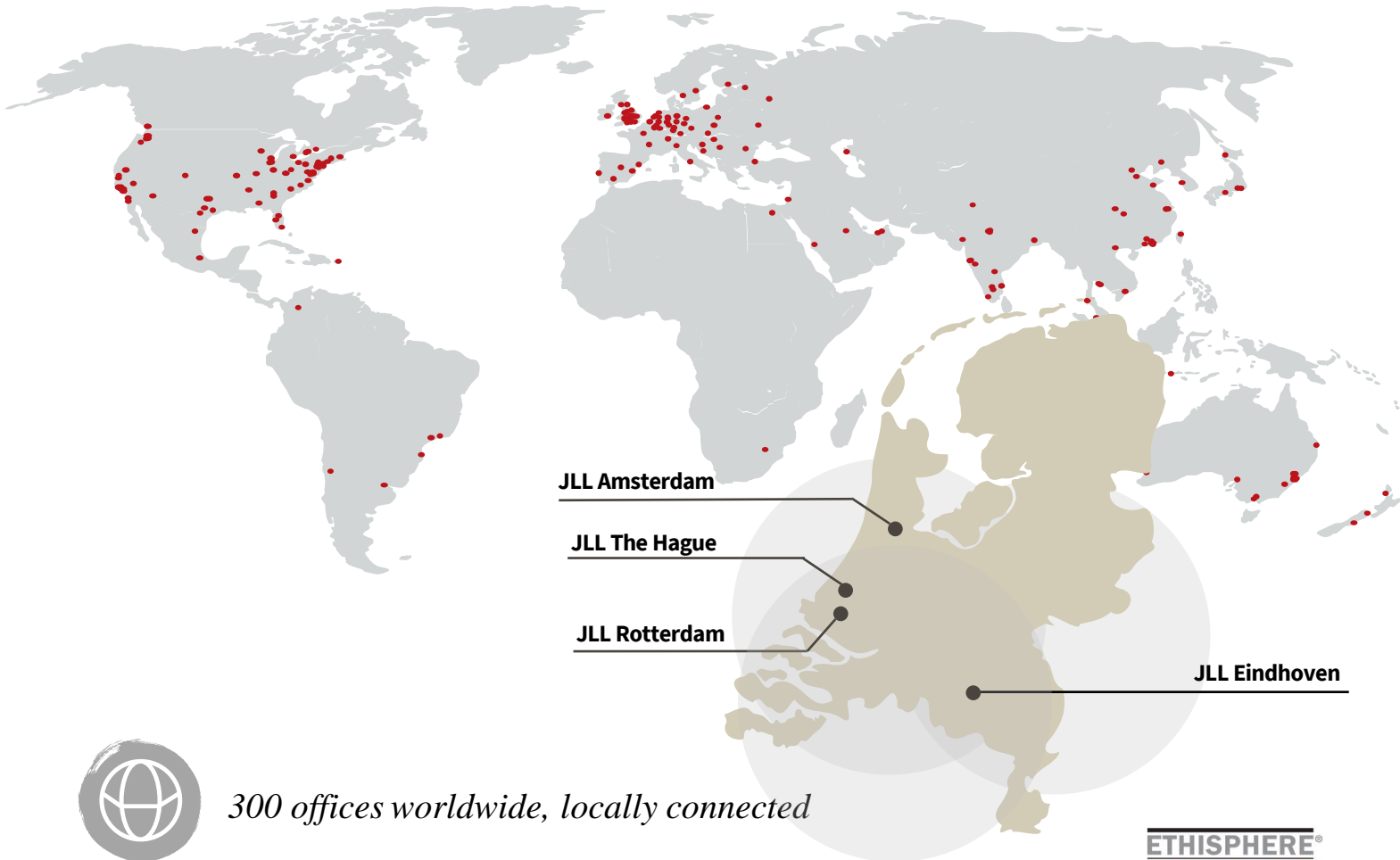
Floor plans

5th Floor



About JLL

JLL (NYSE: JLL) is a leading professional services firm that specializes in real estate and investment management. JLL shapes the future of real estate for a better world by using the most advanced technology to create rewarding opportunities, amazing spaces and sustainable real estate solutions for our clients, our people and our communities. JLL is a Fortune 500 company with annual revenue of \$19.4 billion, operations in over 80 countries and a global workforce of more than 100,000 as of March 31, 2022. JLL is the brand name, and a registered trademark, of Jones Lang LaSalle Incorporated. For further information, visit jll.com.



300 offices worldwide, locally connected



100.000 colleagues worldwide



4 offices in the Netherlands, with a global mindset



170 professionals in The Netherlands



Five Real Estate Markets (Offices, Industrial & Logistics, Retail, Living, Health care)

ETHISPHERE[®]
WORLD'S MOST
ETHICAL
COMPANIES[®]
2008 - 2022

FORTUNE
WORLD'S MOST
ADMIRIED
COMPANIES[®] 2021

IAOP GLOBAL
OUTSOURCING100

ISO
9001
QUALITY
ASSURANCE

DISCLAIMER

©2022 Jones Lang LaSalle IP, Inc. All rights reserved. The information contained in this document is proprietary to Jones Lang LaSalle and shall be used solely for the purposes of evaluating this proposal. All such documentation and information remains the property of Jones Lang LaSalle and shall be kept confidential. Reproduction of any part of this document is authorized only to the extent necessary for its evaluation. It is not to be shown to any third party without the prior written authorization of Jones Lang LaSalle. All information contained here in is from sources deemed reliable; however, no representation or warranty is made as to the accuracy thereof.

