



For Sale

**17,063 Square Meter Lot
Lisob, Malinao, Siargao**

FOR FURTHER INFORMATION

Should you require further information on the subject property or wish to view the property, please contact:

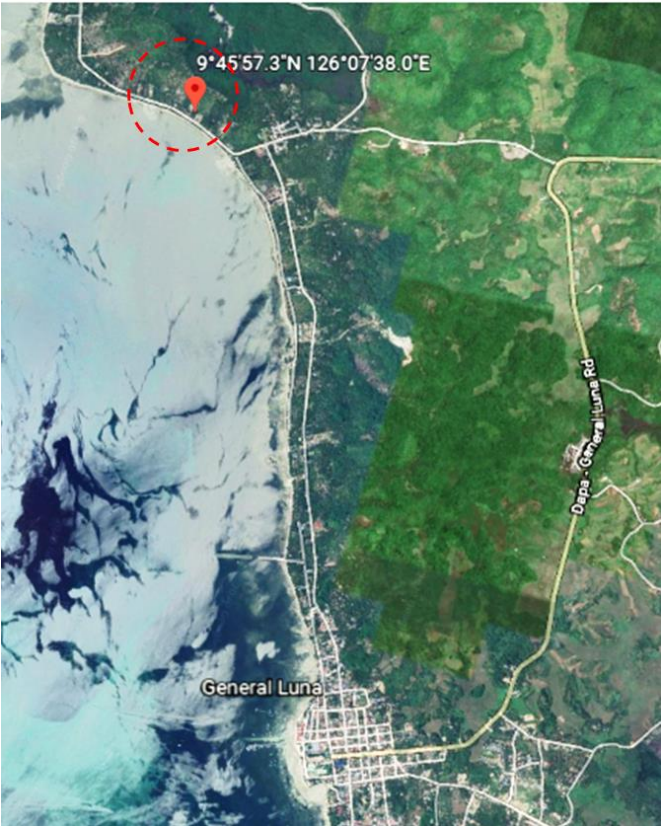
Izumi Galdo
Capital Markets
+63 917 130 5661
izumi.galdo@ap.jll.com

www.jll.com.ph

Redevelopment Opportunity

Details	
Location	Lisob Malinao, Siargao
Lot Area	17,063 square meters
Description	<ul style="list-style-type: none"> ✓ Approximately 50 meters away from the beach (with right of way) ✓ Approximately 30 meters from the road ✓ Bordered by mangroves at the back area, which connects Nay Palad Hideaway (passage and dock for yachts, perfect for paddle boarding, etc.
	<ul style="list-style-type: none"> ✓ 5 to 10 minutes from mainland Gen. Luna ✓ 10 to 15 minutes from Cloud 9 ✓ 2-3 minutes from Bayud Boutique Resort and Nay Palad Hideaway ✓ Near Hanoynoy and Naked Islands ✓ Beside Malinao Views
Asking Price	PHP 15,000 per square meter (gross)

The material herein is intended as a guide only, no liability for negligence or otherwise is assumed for the material contained herein by Jones Lang LaSalle, its principal or its servants or its agents. No material contained herein shall form the basis of or be part of any agreement and no warranty is given or implied as to the accuracy of the whole or any part of the material. Prospective purchasers/tenants should not rely on the material but should make their own enquiries and satisfy themselves of all aspects of the material. Any liability by Jones Lang LaSalle, its principal, its servants or its agents in any way connected with the brochure, whether or not such liability results from or involves negligence, will not exceed \$1000.00.



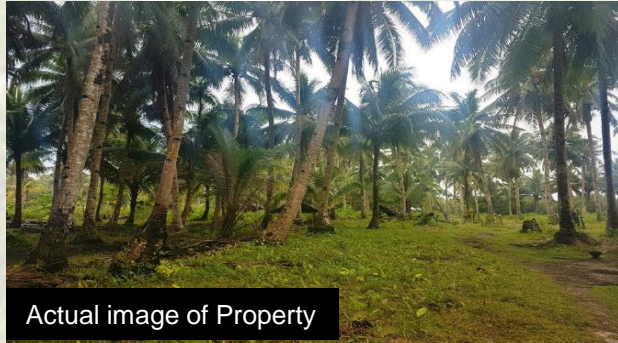
Perspectives from General Luna



Sea and Manilao Mangroves



30 meters from the road



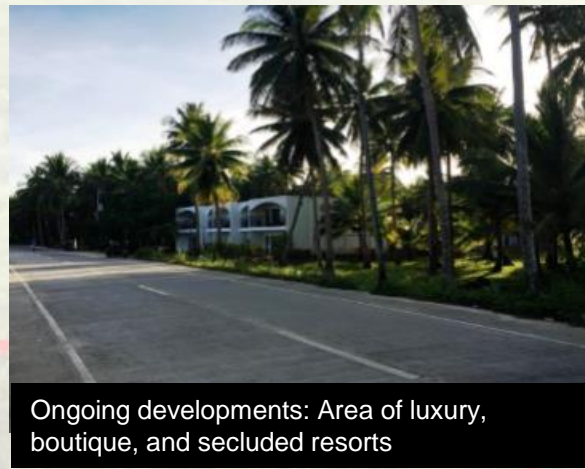
Actual image of Property



Actual image of Property



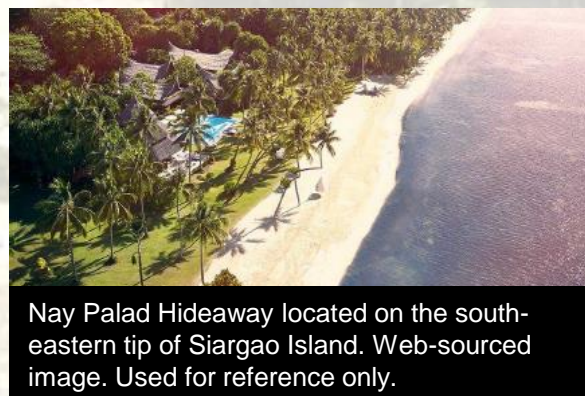
Property 30 meters from the road



Ongoing developments: Area of luxury, boutique, and secluded resorts



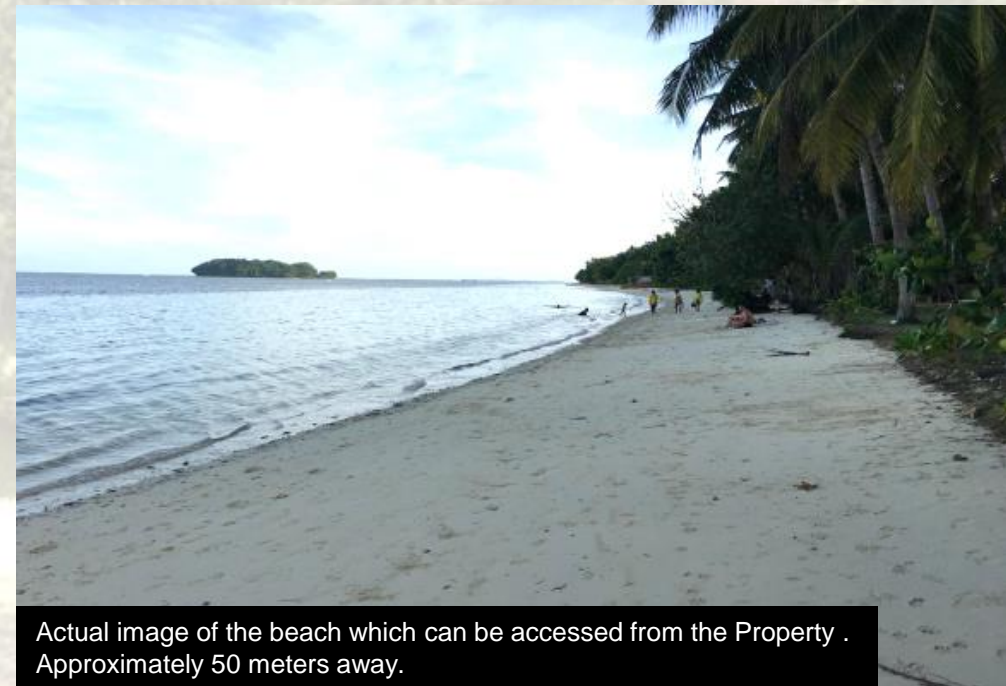
Bayud Boutique Resort located along the same stretch of coastline. Web-sourced image. Used for reference only.



Nay Palad Hideaway located on the south-eastern tip of Siargao Island. Web-sourced image. Used for reference only.



Actual image of the beach which can be accessed from the Property . Approximately 50 meters away.



Actual image of the beach which can be accessed from the Property . Approximately 50 meters away.