



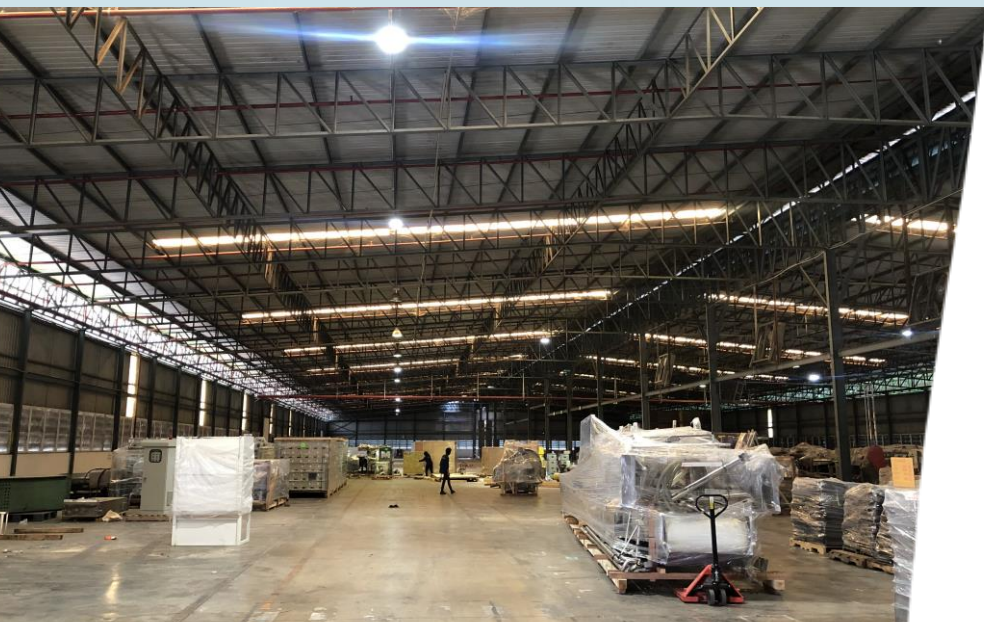
# For Sale

Land with factory & dormitory

Rayong, Thailand







## Property Information

### Site 1 : Factory

- This factory was utilized as a canned pineapple production with basic facilities provided, good for food industry
- The land consists of 7 contiguous lots, containing an aggregate area of approximately 78.61 Rai (31 Acre))
- Gross floor area is approximately 44,5000 sqm. Factory (14,800 sqm), warehouse (8,125 sqm), office (900 sqm) and canteen (1,000 sqm)
- Strong floor loading and high ceiling

### Site 2 : Dormitory

- The land consists of 1 lot, containing an aggregate area of approximately 21.43 Rai (8.47 Acre)
- The land has an irregular shape with a frontage of approximately 220 meters to the road.
- Consists of 20 Single Storey-houses with total floor area approximately 7,600 sqm.

## Distance from subject

- 7 kms to Bankai District
- 22 kms to Rayong city
- 32 kms to Map Ta Phut Port
- 60 kms to Laem Chabang Port
- 140 kms to Suvarnabhumi Airport
- 160 kms to Bangkok

## Rayong, Thailand

Terms and conditions are subjected  
To further negotiation

**For more information, please contact  
JLL Industrial department**

**T : 02 624 6480-4**

**Subyagorn Sansugtaweesub**

**M : +6681 442 6014**

**E : [Subyagorn.sansugtaweesub@ap.jll.com](mailto:Subyagorn.sansugtaweesub@ap.jll.com)**

#### DISCLAIMER

The material herein is intended as a guide only, no liability for negligence or otherwise is assumed for the material contained herein by Jones Lang LaSalle, its principal or its servants or its agents. No material contained herein shall form the basis of or be part of any agreement and no warranty is given or implied as to the accuracy of the whole or any part of the material. Prospective purchasers/tenants should not rely on the material but should make their own enquiries and satisfy themselves of all aspects of the material. Any liability by Jones Lang LaSalle, its principal, its servants or its agents in any way connected with the brochure, whether or not such liability results from or involves negligence, will not exceed \$1000.00.

