



CROSSWAYS

QUARTER



# CROSSWAYS QUARTER

CROSSWAYS QUARTER IS A COLLECTION OF  
1, 2 AND 3 BEDROOM APARTMENTS IN GREENHITHE

## CONTENTS

INTRODUCTION	2
LOCATION	4
TRAVEL CONNECTIONS	10
YOUR NEW HOME	12
THE PLANS	24
ABOUT BELLWAY	60
CONTACTS AND MAP	70

# LONDON LIVING BELLWAY STYLE



Computer generated image of Avon Apartments and photography of nearby Bellway London Show Apartment.



Crossways Quarter is a desirable collection of 1, 2 and 3 bedroom apartments located in Greenhithe, close to the River Thames. With world-class shopping, international transport links and the city centre all within easy reach, a home here is ideally suited to commuters and young families looking for a quieter life while keeping their finger on the pulse of the capital.



# AN UNRIVALLED LOCATION

Located within the Thames Gateway regeneration, Crossways Quarter is just minutes from excellent road and rail connections. With a wealth of amenities nearby, this brand-new neighbourhood puts sustainability, community and quality of life at its heart.



M25

THE WHARF

LITTLEBROOK PIER

CROSSWAYS BOULEVARD (A206)

QUEEN ELIZABETH II BRIDGE

RIVER THAMES

CLIPPER BOULEVARD

M25

A13

LAKESIDE SHOPPING CENTRE

STONE CROSSING TRAIN STATION

TO BLUEWATER SHOPPING CENTRE

Aerial Image

# DISCOVER GREENHITHE

A WELCOMING COMMUNITY WITH ALL THE ESSENTIALS ON ITS DOORSTEP AND EVERYTHING ELSE WITHIN REACH

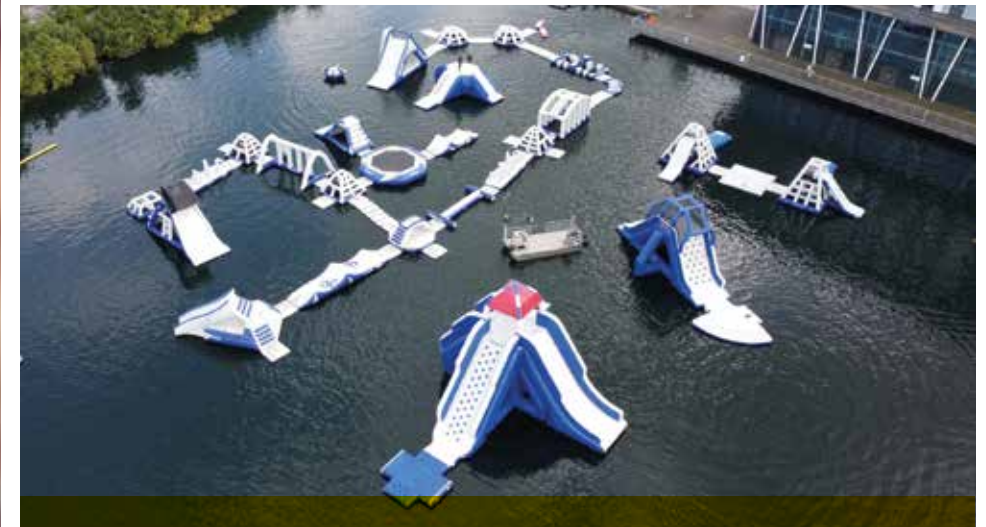
Crossways Quarter is within walking distance of nearby local shops and a supermarket, while the centre of Greenhithe is a four-minute drive away.

Situated on the bank of the river Thames, this large village offers day-to-day essentials such as a surgery, post office and library, plus a community centre and recreation ground.

Neighbouring Swanscombe plays home to a leisure centre for keeping fit, plus a choice of local cafés and eateries. Furthermore, Bluewater and Lakeside Shopping Centres with their seemingly endless choice of shops, restaurants and entertainment facilities can be reached in just seven minutes and 17 minutes by car, respectively.

Alternatively, Dartford lies 14 minutes away by road and provides a thriving town centre to explore. There is a great choice of amenities, including bustling local markets where you'll find everything from fresh produce to fashion and jewellery.

Add to this fantastic connections for travelling further afield and the result is the ideal base for families and London commuters looking for a better quality of life.



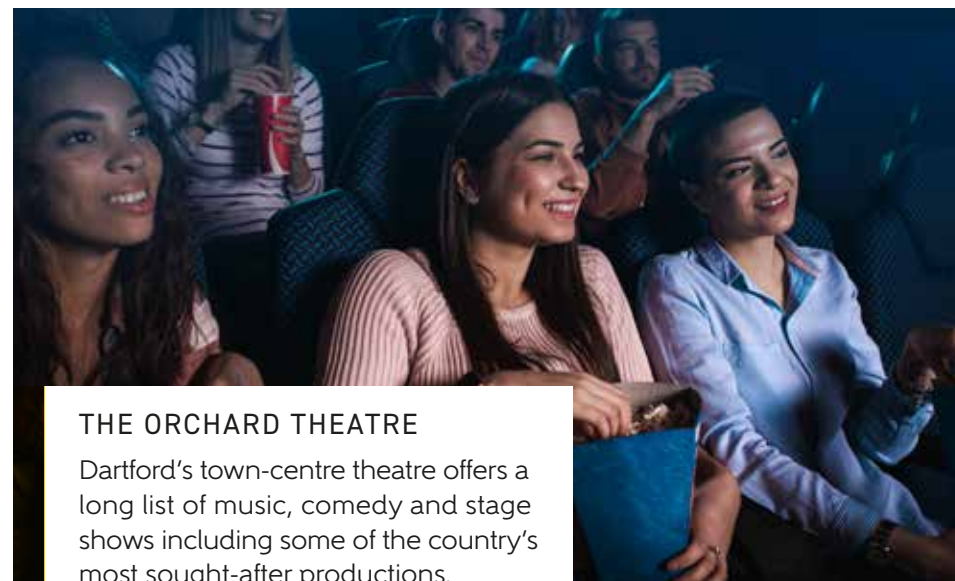
## AQUA PARK LAKESIDE

With over 40 inflatable obstacles including slides, blast bags and balance beams, this outdoor water park makes a thrilling day out.



## BLUEWATER SHOPPING CENTRE

This 240-acre site comprises 300 stores and a huge selection of bars, restaurants, cafés and entertainment that can cater for everyone.



## THE ORCHARD THEATRE

Dartford's town-centre theatre offers a long list of music, comedy and stage shows including some of the country's most sought-after productions.



## PIRATE COVE ADVENTURE PARK

Whether you spend the day tackling 36 holes of adventure golf, boating around the lake or doing a bit of both, family fun is guaranteed.

# PARK LIFE

IT'S EASY TO GET A BREAK FROM THE STRESSES OF MODERN LIFE AT AN ABUNDANCE OF NEARBY PARKS AND GREEN SPACES



**WORCESTER PARK**  
DA9 9RA

- 🚶 15 minutes on foot
- 🚲 5 minutes by bike

Worcester Park is a large parkland area that includes open space, woodland, walking trails and a well-equipped play area.



**EAGLES ROAD PARK**  
DA9 9QZ

- 🚲 5 minutes by bike
- 🚗 3 minutes by car

This nearby area of woodland overlooking the River Thames is perfect for an afternoon stroll among nature.



**DARENTH COUNTRY PARK**  
DA2 6GW

- 🚲 15 minutes by bike
- 🚗 9 minutes by car

A beautiful mixture of grazing pastures, wildflower meadows, an orchard and a playground make this the perfect escape.



**HESKETH PARK**  
DA1 1QZ

- 🚲 15 minutes by bike
- 🚗 10 minutes by car

Great for sports lovers, Hesketh Park is home to a cricket ground, bowls club and tennis courts, surrounded by planted areas.



**DARTFORD CENTRAL PARK**  
DA1 1JP

- 🚲 18 minutes by bike
- 🚗 11 minutes by car

A 26-acre park at the centre of Dartford offering a wide variety of places to unwind, from formal gardens to sports facilities.

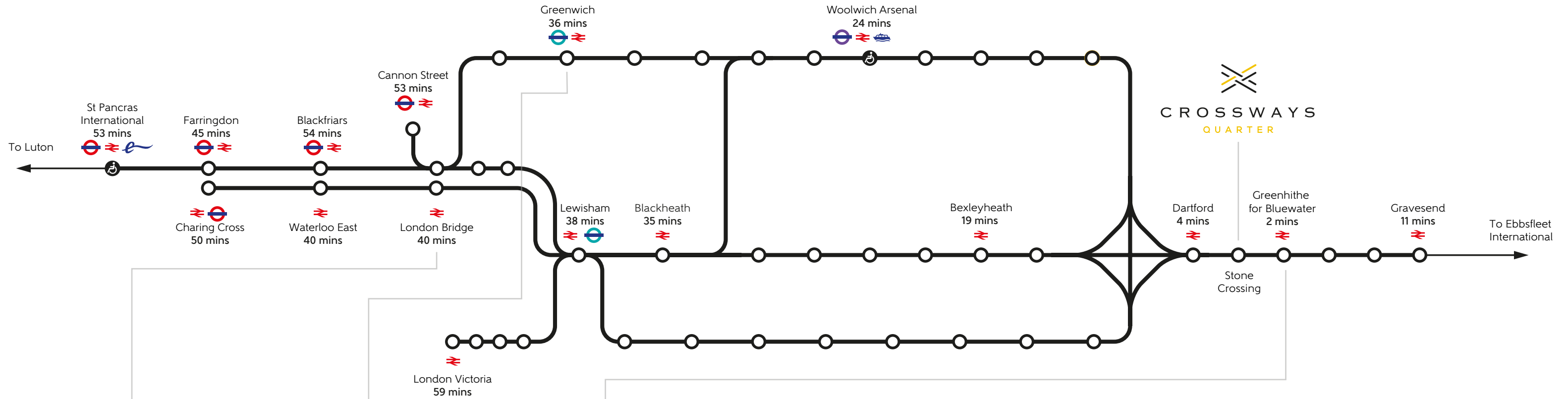


**SWANSCOMBE MARSHES**  
DA11 9BB

- 🚲 18 minutes by bike
- 🚗 15 minutes by car

Rich in wildlife and a haven for breeding birds, Swanscombe Marshes makes the ideal place to explore in the fresh air.

# CONNECTED TO THE CITY AND BEYOND



BY ROAD OR BY RAIL, GREENHITHE KEEPS THE CAPITAL AND THE COUNTRY WITHIN EASY REACH



LONDON BRIDGE

A gateway to the best of the capital for both business and pleasure.



GREENWICH

Village charm meets remarkable history and world-class entertainment.



EBBSFLEET INTERNATIONAL

High-speed rail connections to a number of major European cities.

	DISTANCE	BY CAR
M25	1.7 miles	5 minutes
BLUEWATER	2.3 miles	7 minutes
A2	2.3 miles	7 minutes
DARTFORD CROSSING	2.9 miles	8 minutes
M20	6.5 miles	10 minutes
EBBSFLEET INTERNATIONAL	8.1 miles	14 minutes
THE O2	16.7 miles	28 minutes
GREENWICH	16.8 miles	26 minutes
CITY AIRPORT	18.4 miles	36 minutes
GATWICK AIRPORT	35.1 miles	43 minutes

Travel distances and times are approximate only, taken from Google Maps. Travel times from the trainline.com taken from Bexleyheath train station.

# YOUR NEW HOME AWAITS

INTRODUCING OUR  
COLLECTION OF 1, 2 AND 3  
BEDROOM APARTMENTS

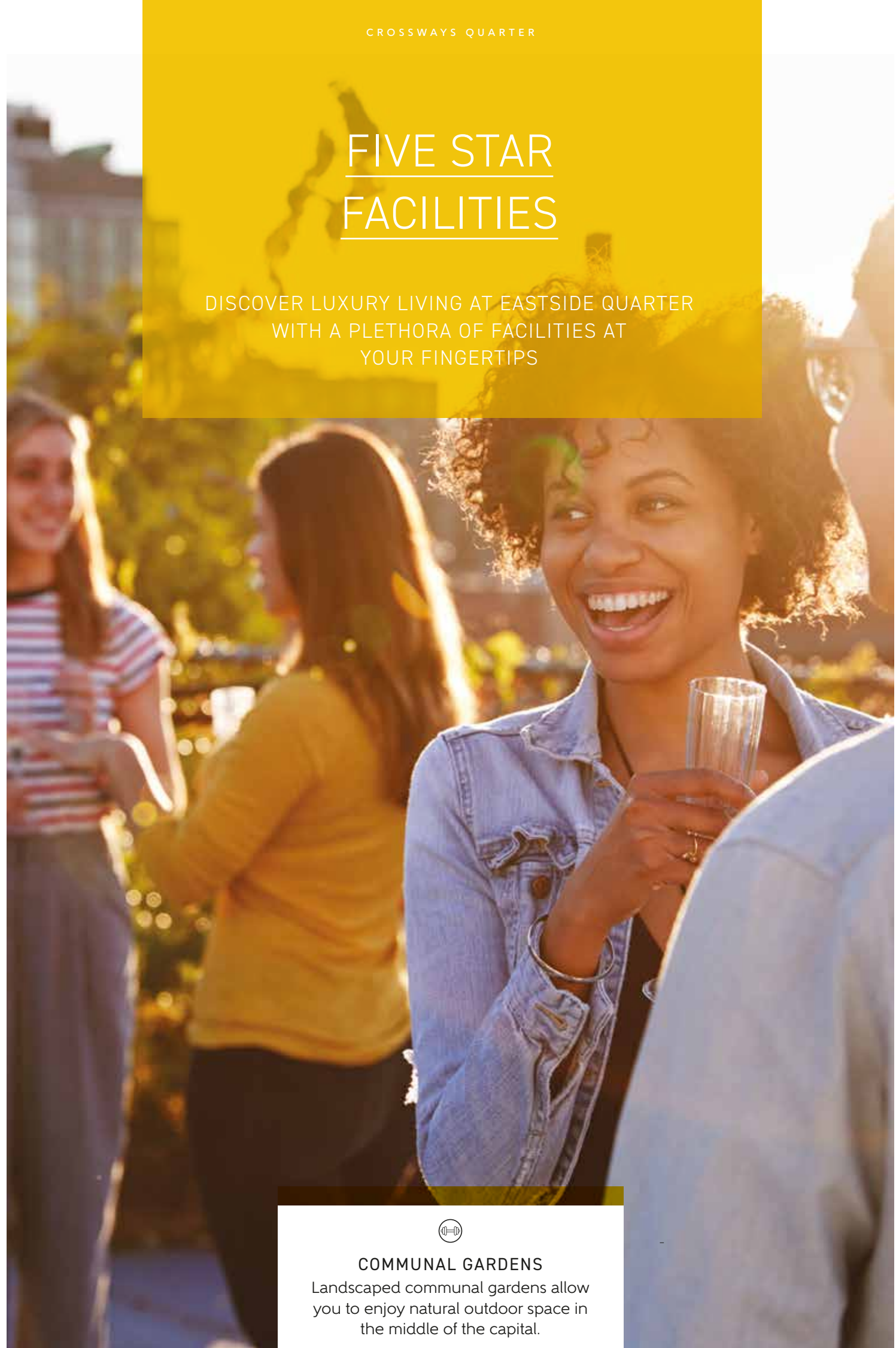


Computer generated image of Avon Apartments.



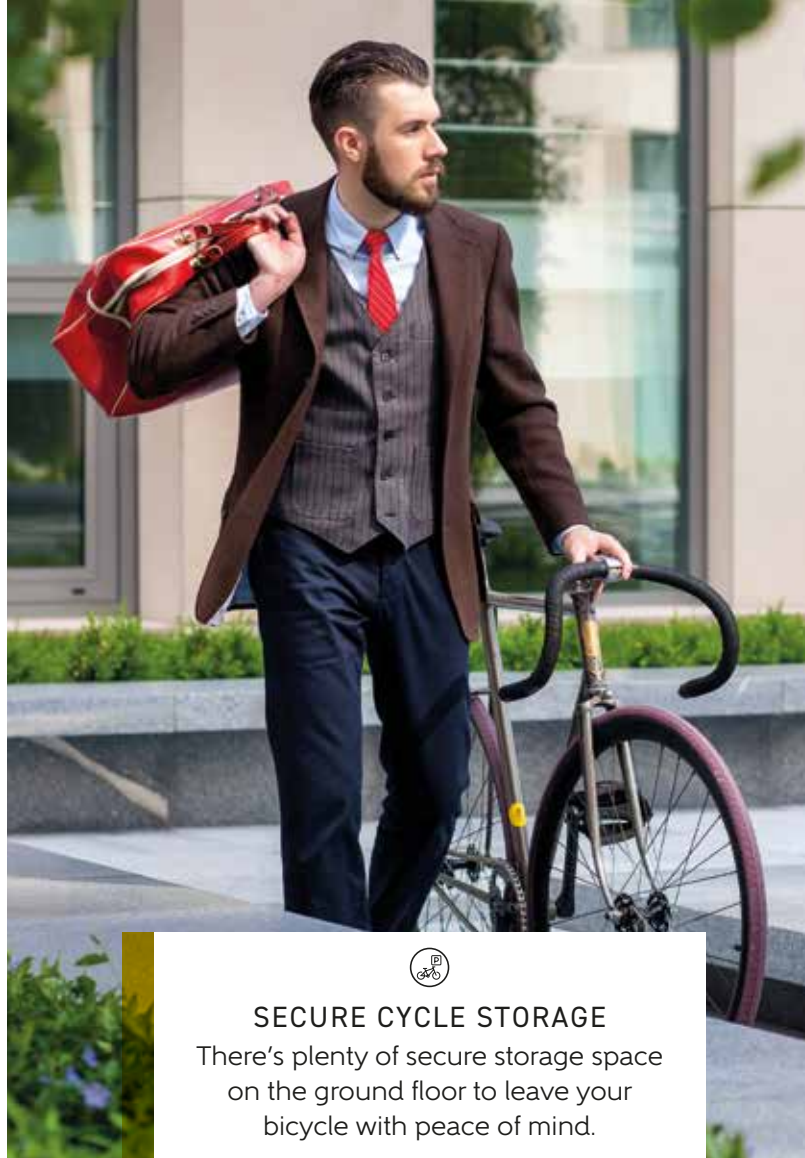
# FIVE STAR FACILITIES

DISCOVER LUXURY LIVING AT EASTSIDE QUARTER WITH A PLETHORA OF FACILITIES AT YOUR FINGERTIPS



### COMMUNAL GARDENS

Landscaped communal gardens allow you to enjoy natural outdoor space in the middle of the capital.



### SECURE CYCLE STORAGE

There's plenty of secure storage space on the ground floor to leave your bicycle with peace of mind.



Computer generated image of indicative work hub



### WORK HUB

Work Hub allows residents exclusive access to a dedicated work space with WiFi, conferencing facilities, meeting space and private booths.



### SECURE CAR PARKING

You'll rest easy knowing that when you return home every day there's car parking available for you, some spaces available with electric charging points (subject to purchase).

# HOME WORKING THAT WORKS FOR YOU

WORKING FROM HOME IS MADE EASIER WITH DEDICATED WORKING SPACE AND HYPERFAST CONNECTIVITY FROM THE DAY YOU MOVE IN



DEDICATED HOME WORKING ZONE WITH ADDITIONAL SOCKETS AND USB PORTS

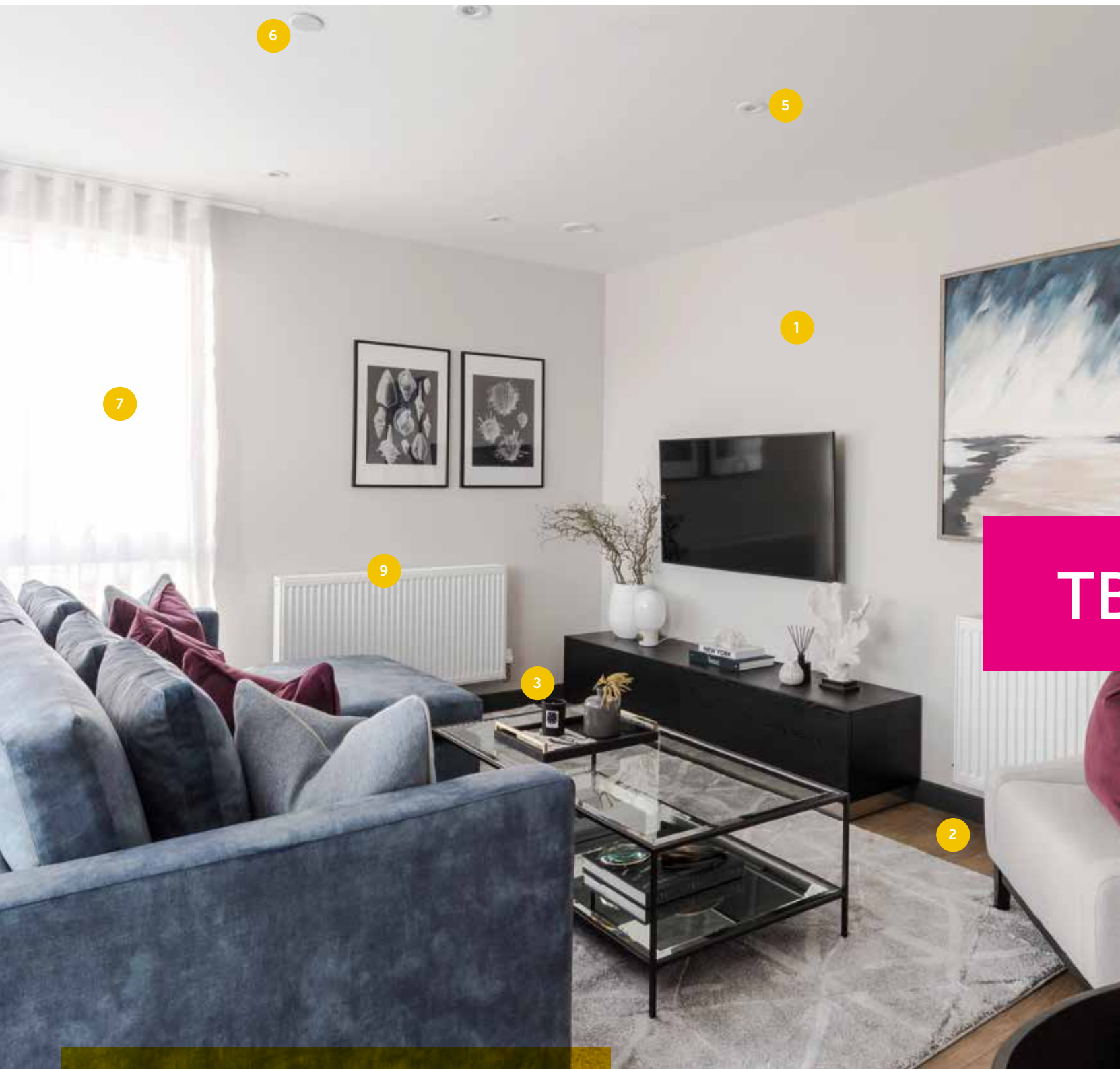


CONNECT TO HYPEROPTIC BROADBAND, THAT'S 12X FASTER\* THAN THE UK AVERAGE, FROM THE DAY YOU MOVE IN

The apartments at Crossways Quarter offer versatility to create a practical home-working environment. Spacious, open-plan interiors with additional sockets and USB ports for home working zones and the option of transforming a spare bedroom into a dedicated home office, makes it easy to create a healthy balance between personal and professional life.

Getting online couldn't be easier, your new home at Crossways Quarter will be connected to hyper-fast broadband and can be activated on the day you move in with a simple telephone call.

Photograph taken at nearby development.  
\*Broadband speed calculations: The UK's average broadband speeds are 71.8Mbps for downloads and 14.2Mbps for uploads, compared to Hyperoptic's top average speed of 900Mbps which is achieved through a wired connection. Average speeds taken from Ofcom's 'UK Home Broadband Performance' measurement period May 2020.



## THE LIVING SPACE

- 1 | Walls and ceilings finished in white
- 2 | Laminate wood flooring
- 3 | Pencil rounded skirting and architraves
- 4 | Media plate to living room with Sky Q/Sky+ HD (connection to Sky to be arranged by purchaser via communal satellite dish)
- 5 | LED downlights to living rooms with dimmer switch
- 6 | Mains linked smoke detector with battery backup
- 7 | Aluminium composite doors and windows
- 8 | Video door entry system
- 9 | Heating and hot water provided via central boiler

TBC

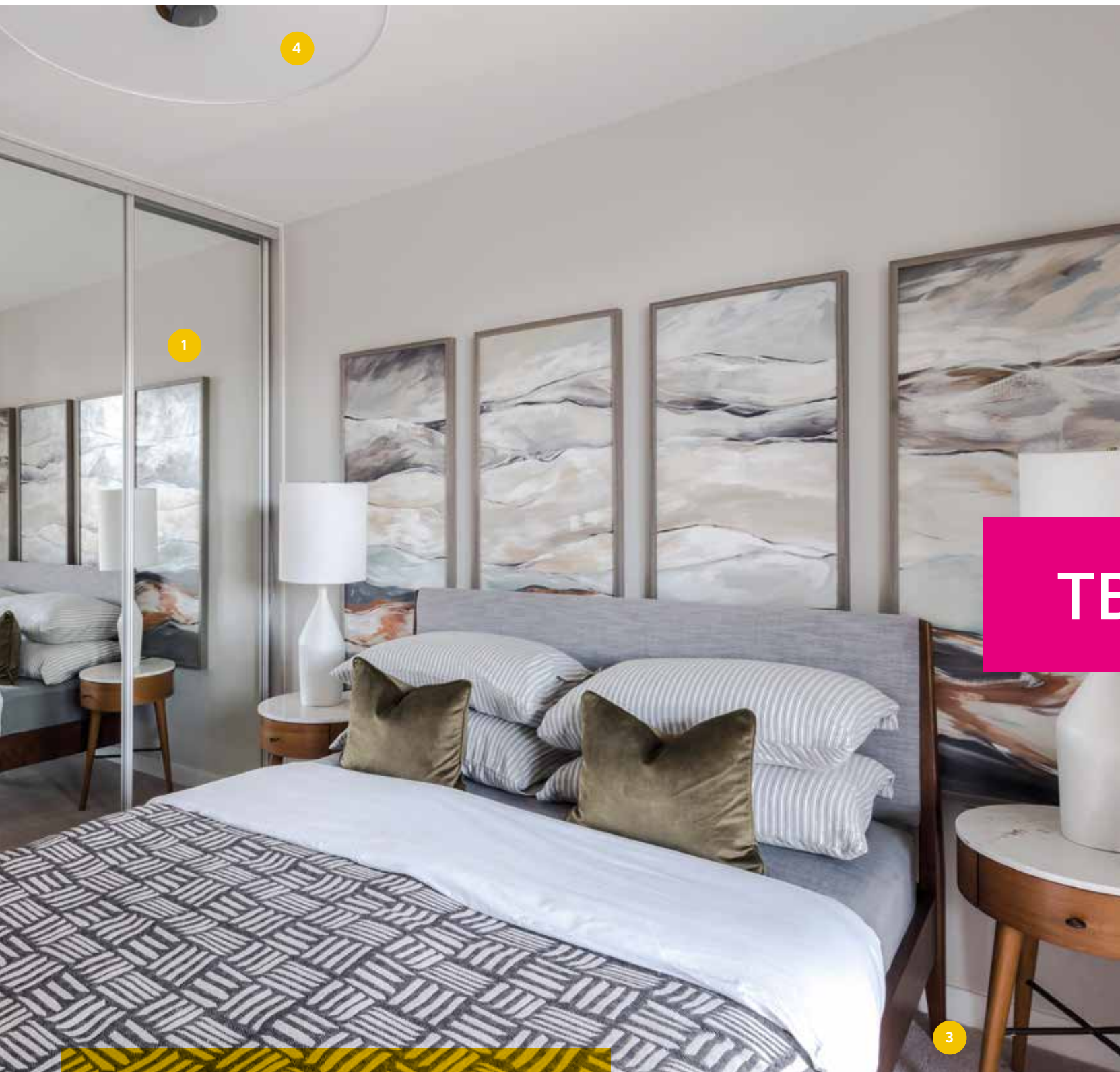


## THE KITCHEN

- 1 | Soft close doors and drawers
- 2 | Handle-less wall units
- 3 | Built in stainless steel oven, ceramic hob and hood
- 4 | Integrated fridge/freezer
- 5 | Removable cupboard with space for a dishwasher and microwave (to selected apartments where space allows)
- 6 | Feature LED lighting
- 7 | Satin chrome sockets and switches

All appliances come complete with manufacturer warranties for your peace of mind.

Photographs of the 3 bedroom Show Apartment.



TBC

## THE BEDROOMS

- 1 | Fitted wardrobes to bedroom 1
- 2 | BT socket and TV/data point to bedroom 1
- 3 | Carpets to all bedrooms
- 4 | Energy efficient pendant light to all bedrooms



## THE BATHROOM AND EN SUITE

- 1 | White Roca sanitaryware
- 2 | Chrome Bristan fittings
- 3 | Floor mounted WC with concealed cistern
- 4 | Roca dual chrome flush
- 5 | Fully ceramic tiled walls around bath/shower (half tiled to remaining walls)
- 6 | Ceramic tiles to floor
- 7 | Armarii slot-in shelving (to selected apartments)
- 8 | Mira 'Agile ERD' thermostatic shower
- 9 | Heated chrome towel rail
- 10 | Wall mirror over hand basin and WC

# UPGRADE AND PERSONALISE YOUR HOME

TAILOR YOUR INTERIORS TO REFLECT YOUR TASTE

Every Bellway home has been lovingly designed and crafted to provide a versatile living space that is simply begging to be turned from a blank canvas into a place to call home. It's for this reason that Bellway Additions offers you the opportunity to upgrade your interior specification to reflect your own personality.

We have a range of options available, from adding integrated appliances to upgrading your flooring and bathroom tiles. Once you have chosen your Additions we'll ensure they are all expertly fitted and finished by the time you move in, giving you the peace of mind that your new home will reflect your own personal taste from day one.

## FLOORING

Completely transform your interior by selecting from a variety of Amtico, laminate and carpets.



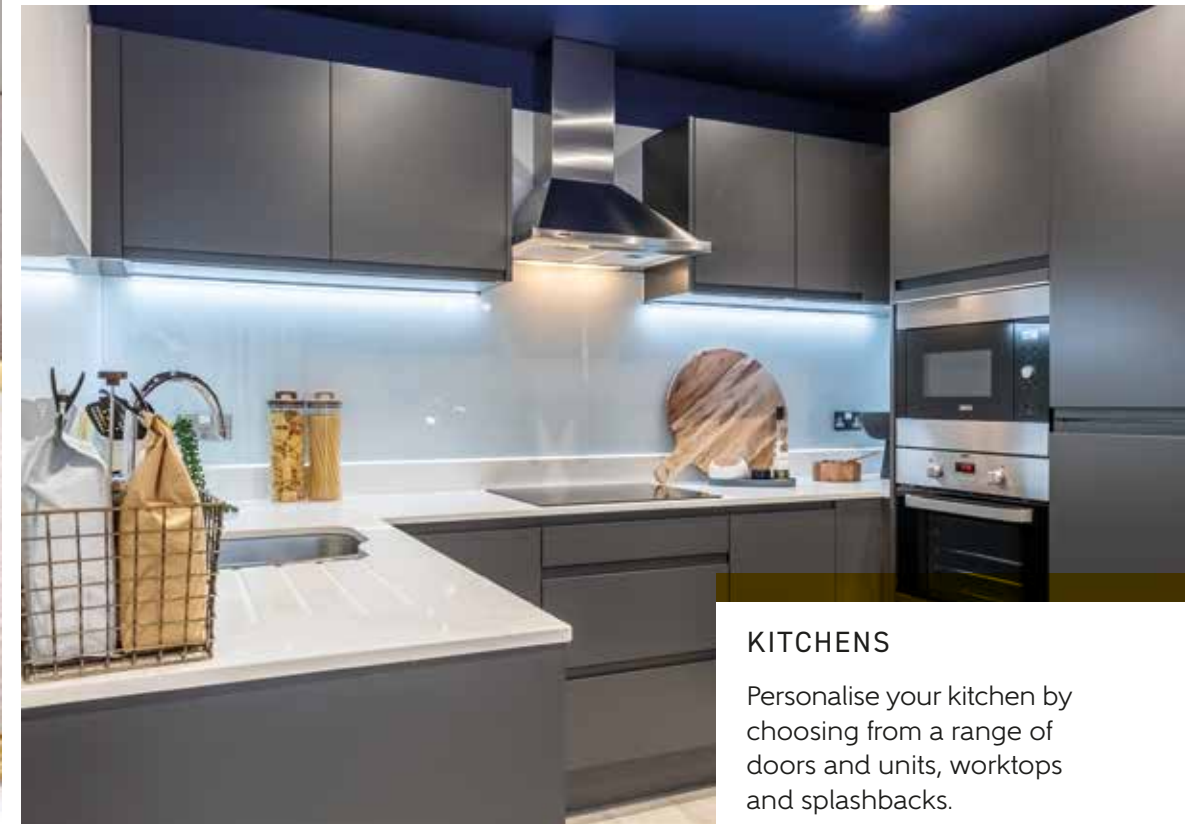
## BEDROOMS

Additional fitted wardrobes can be installed to spare bedrooms providing extra made-to-measure storage.



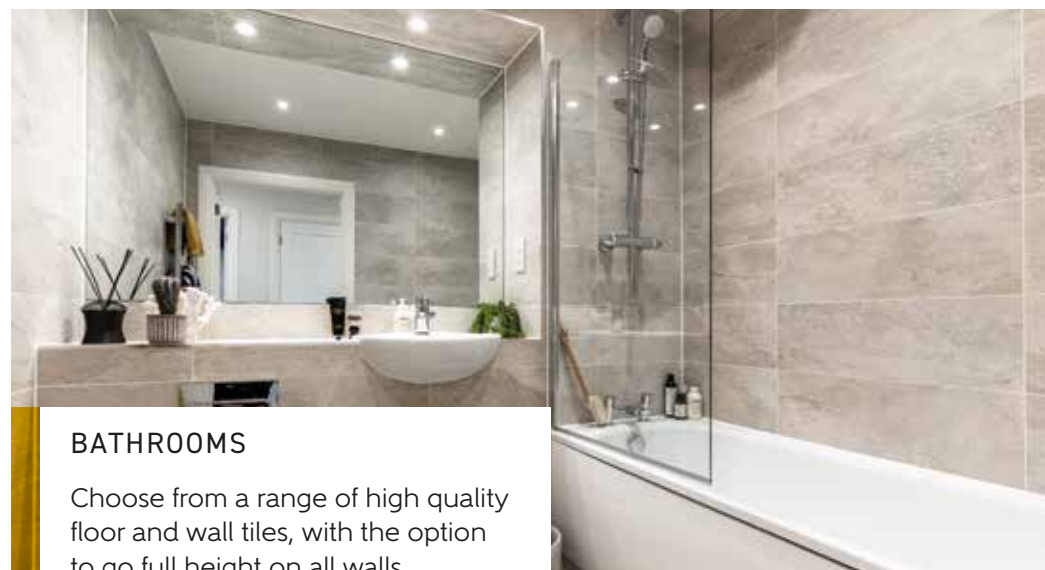
## APPLIANCES

In addition to the appliances included as standard, we can supply and install an A+ rated dishwasher or microwave in your kitchen or a washer dryer in hall cupboard (to selected apartments where space allows).



## KITCHENS

Personalise your kitchen by choosing from a range of doors and units, worktops and splashbacks.



## BATHROOMS

Choose from a range of high quality floor and wall tiles, with the option to go full height on all walls.

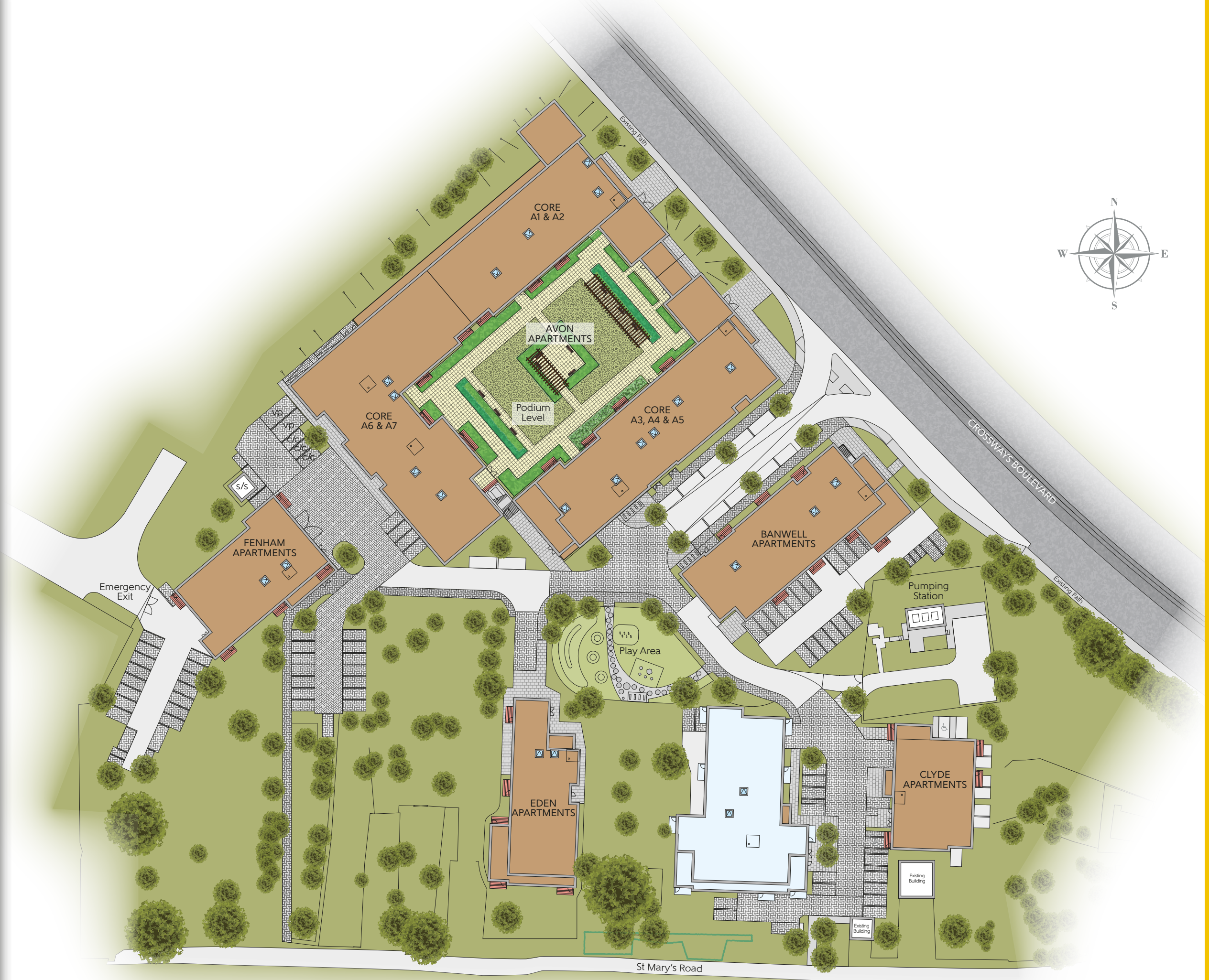


The options available may vary by development and orders can only be accepted up to certain stages of the construction process. Please ask your Sales Advisor to show you the full range of product upgrades available on your development and chosen home.



**CROSSWAYS**  
QUARTER

**DEVELOPMENT**  
**PLAN**



The site plan is drawn to show the relative position of individual properties. Not to scale. These are drawings and will not show land contours and gradients, boundary treatments, landscaping or local authority street lighting. Footpaths subject to change. For details of individual properties and availability please refer to our Sales Advisor. Block names are for marketing purposes only. Key to plan: c/c Car Club, vp Visitor Parking

# AVON APARTMENTS

INTRODUCING OUR COLLECTION OF  
1, 2 AND 3 BEDROOM APARTMENTS  
PLOTS 1 - 141



Computer generated image.

# AVON APARTMENTS

## (CORES A1 & A2)

### Level 1

#### PLOT 1 TYPE CQ56

Kitchen/Living/Dining Room	7.200m x 3.770m	23'7" x 12'4"
Bedroom	3.885m x 3.840m	12'9" x 12'7"
<b>Total Area</b>	<b>55.4 sq.m.</b>	<b>596 sq.ft.</b>

#### PLOT 2 TYPE CQ9

Kitchen/Living/Dining Room	7.200m x 3.885m	23'7" x 12'9"
Bedroom	4.182m x 3.245m	13'9" x 10'8"
<b>Total Area</b>	<b>50.2 sq.m.</b>	<b>540 sq.ft.</b>

#### PLOT 3 TYPE CQ10

Kitchen/Living/Dining Room	7.219m x 3.635m	23'8" x 11'11"
Bedroom 1	3.648m x 3.305m	12'0" x 10'10"
Bedroom 2	5.279m x 2.650m	17'4" x 8'8"
<b>Total Area</b>	<b>73.5 sq.m.</b>	<b>791 sq.ft.</b>

#### PLOTS 4, 5 & 6 TYPE CQ4

Kitchen/Living/Dining Room	7.200m x 3.600m	23'7" x 11'10"
Bedroom 1	5.455m x 2.763m	17'11" x 9'1"
Bedroom 2	3.885m x 3.278m	12'9" x 10'9"
<b>Total Area</b>	<b>72.0 sq.m.</b>	<b>775 sq.ft.</b>

#### PLOT 7 TYPE CQ3

Kitchen/Living/Dining Room	7.200m x 3.046m	23'7" x 10'0"
Bedroom 1	4.913m x 3.546m	16'1" x 11'8"
Bedroom 2	4.061m x 2.401m	13'4" x 7'11"
<b>Total Area</b>	<b>65.0 sq.m.</b>	<b>700 sq.ft.</b>

#### PLOT 8 TYPE CQ2

Kitchen/Living/Dining Room	5.927m x 4.675m	19'5" x 15'4"
Bedroom 1	4.675m x 3.787m	15'4" x 12'5"
Bedroom 2	4.419m x 3.251m	14'6" x 10'8"
Bedroom 3	3.682m x 2.842m	12'1" x 9'4"
<b>Total Area</b>	<b>90.3 sq.m.</b>	<b>972 sq.ft.</b>

#### PLOT 38 TYPE CQ1

Kitchen/Living/Dining Room	5.646m x 5.319m	18'6" x 17'5"
Bedroom 1	4.378m x 3.238m	14'4" x 10'7"
Bedroom 2	4.181m x 3.063m	13'9" x 10'1"
Bedroom 3	2.995m x 2.965m	9'10" x 9'9"
<b>Total Area</b>	<b>88.9 sq.m.</b>	<b>957 sq.ft.</b>



Some items shown in this key may be subject to change, and positions could vary from those indicated on this floorplan. Please refer to Sales Advisor for details of your selected plot. External finishes, landscaping and configuration may vary from plot to plot. Please refer to Sales Advisor for further details. All dimensions are approximate and should not be used for carpet sizes, appliance spaces or furniture. Furniture not to scale and all positions are indicative. **Kitchen layouts are subject to change.** We operate a policy of continuous improvement and individual features such as kitchen and bathroom layouts, doors, windows, garages and elevational treatments may vary from time to time. Consequently these particulars should be treated as general guidance only and do not constitute a contract, part of a contract or a warranty.



#### KEY

- 1 Bedroom Apartment
- 2 Bedroom Apartment
- 3 Bedroom Apartment
- W Fitted Wardrobe
- Indicates where dimensions are taken from



# AVON APARTMENTS

## (CORES A1 & A2)

### Levels 2 & 3

#### PLOTS 9 & 19 TYPE CQ52

Kitchen/Living/Dining Room	5.881m x 5.872m	19'4" x 19'3"
Bedroom 1	4.970m x 4.656m	16'4" x 15'3"
Bedroom 2	3.918m x 3.662m	12'10" x 12'0"
<b>Total Area</b>	<b>86.0 sq.m.</b>	<b>926 sq.ft.</b>

#### PLOTS 10 & 20 TYPE CQ51

Kitchen/Living/Dining Room	7.200m x 4.392m	23'7" x 14'5"
Bedroom 1	5.216m x 3.546m	17'1" x 11'8"
Bedroom 2	3.418m x 2.221m	11'3" x 7'3"
<b>Total Area</b>	<b>65.2 sq.m.</b>	<b>702 sq.ft.</b>

#### PLOTS 11, 14, 15, 16, 21, 24, 25 & 26 TYPE CQ4

Kitchen/Living/Dining Room	7.200m x 3.600m	23'7" x 11'10"
Bedroom 1	5.455m x 2.763m	17'11" x 9'1"
Bedroom 2	3.885m x 3.278m	12'9" x 10'9"
<b>Total Area</b>	<b>72.0 sq.m.</b>	<b>775 sq.ft.</b>

#### PLOTS 12 & 22 TYPE CQ9

Kitchen/Living/Dining Room	7.200m x 3.885m	23'7" x 12'9"
Bedroom	4.182m x 3.245m	13'9" x 10'8"
<b>Total Area</b>	<b>50.2 sq.m.</b>	<b>540 sq.ft.</b>

#### PLOTS 13 & 23 TYPE CQ10

Kitchen/Living/Dining Room	7.219m x 3.635m	23'8" x 11'11"
Bedroom 1	3.648m x 3.305m	12'0" x 10'10"
Bedroom 2	5.279m x 2.650m	17'4" x 8'8"
<b>Total Area</b>	<b>73.5 sq.m.</b>	<b>791 sq.ft.</b>

#### PLOTS 17 & 27 TYPE CQ3

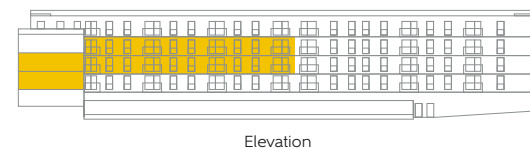
Kitchen/Living/Dining Room	7.200m x 3.046m	23'7" x 10'0"
Bedroom 1	4.913m x 3.546m	16'1" x 11'8"
Bedroom 2	4.061m x 2.401m	13'4" x 7'11"
<b>Total Area</b>	<b>65.0 sq.m.</b>	<b>700 sq.ft.</b>

#### PLOTS 18 & 28 TYPE CQ2

Kitchen/Living/Dining Room	5.927m x 4.675m	19'5" x 15'4"
Bedroom 1	4.675m x 3.787m	15'4" x 12'5"
Bedroom 2	4.419m x 3.251m	14'6" x 10'8"
Bedroom 3	3.682m x 2.842m	12'1" x 9'4"
<b>Total Area</b>	<b>90.3 sq.m.</b>	<b>972 sq.ft.</b>



Some items shown in this key may be subject to change, and positions could vary from those indicated on this floorplan. Please refer to Sales Advisor for details of your selected plot. External finishes, landscaping and configuration may vary from plot to plot. Please refer to Sales Advisor for further details. All dimensions are approximate and should not be used for carpet sizes, appliance spaces or furniture. Furniture not to scale and all positions are indicative. **Kitchen layouts are subject to change.** We operate a policy of continuous improvement and individual features such as kitchen and bathroom layouts, doors, windows, garages and elevational treatments may vary from time to time. Consequently these particulars should be treated as general guidance only and do not constitute a contract, part of a contract or a warranty.



Elevation



Second & Third Floors

#### KEY

- 1 Bedroom Apartment
- 2 Bedroom Apartment
- 3 Bedroom Apartment
- Fitted Wardrobe
- Indicates where dimensions are taken from

# AVON APARTMENTS

## (CORES A1 & A2)

### Level 4

#### PLOT 29 TYPE CQ55

Kitchen/Living/Dining Room	7.200m x 3.367m	23'7" x 11'1"
Bedroom	3.885m x 3.225m	12'9" x 10'7"
<b>Total Area</b>	<b>48.1 sq.m.</b>	<b>518 sq.ft.</b>

#### PLOTS 30, 33, 34 & 35 TYPE CQ4

Kitchen/Living/Dining Room	7.200m x 3.600m	23'7" x 11'10"
Bedroom 1	5.455m x 2.763m	17'11" x 9'1"
Bedroom 2	3.885m x 3.278m	12'9" x 10'9"
<b>Total Area</b>	<b>72.0 sq.m.</b>	<b>775 sq.ft.</b>

#### PLOT 31 TYPE CQ9

Kitchen/Living/Dining Room	7.200m x 3.885m	23'7" x 12'9"
Bedroom	4.182m x 3.245m	13'9" x 10'8"
<b>Total Area</b>	<b>50.2 sq.m.</b>	<b>540 sq.ft.</b>

#### PLOT 32 TYPE CQ10

Kitchen/Living/Dining Room	7.219m x 3.635m	23'8" x 11'11"
Bedroom 1	3.648m x 3.305m	12'0" x 10'10"
Bedroom 2	5.279m x 2.650m	17'4" x 8'8"
<b>Total Area</b>	<b>73.5 sq.m.</b>	<b>791 sq.ft.</b>

#### PLOT 36 TYPE CQ54

Kitchen/Living/Dining Room	7.200m x 4.417m	23'7" x 14'6"
Bedroom 1	3.969m x 3.205m	13'0" x 10'6"
Bedroom 2	3.225m x 2.851m	10'7" x 9'4"
<b>Total Area</b>	<b>65.4 sq.m.</b>	<b>704 sq.ft.</b>



Some items shown in this key may be subject to change, and positions could vary from those indicated on this floorplan. Please refer to Sales Advisor for details of your selected plot. External finishes, landscaping and configuration may vary from plot to plot. Please refer to Sales Advisor for further details. All dimensions are approximate and should not be used for carpet sizes, appliance spaces or furniture. Furniture not to scale and all positions are indicative. **Kitchen layouts are subject to change.** We operate a policy of continuous improvement and individual features such as kitchen and bathroom layouts, doors, windows, garages and elevational treatments may vary from time to time. Consequently these particulars should be treated as general guidance only and do not constitute a contract, part of a contract or a warranty.



KEY	
<span style="display:inline-block; width:10px; height:10px; background-color:grey; border:1px solid black;"></span>	1 Bedroom Apartment
<span style="display:inline-block; width:10px; height:10px; background-color:yellow; border:1px solid black;"></span>	2 Bedroom Apartment
<span style="display:inline-block; width:10px; height:10px; border:1px solid black; text-align:center; vertical-align:middle;">W</span>	Fitted Wardrobe
<span style="display:inline-block; width:10px; height:10px; border:1px solid black; text-align:center; vertical-align:middle;">▶</span>	Indicates where dimensions are taken from

# AVON APARTMENTS (CORES A3, A4 & A5)

## Level 1

### PLOT 38 TYPE CQ1

Kitchen/Living/Dining Room	5.646m x 5.319m	18'6" x 17'5"
Bedroom 1	4.378m x 3.238m	14'4" x 10'7"
Bedroom 2	4.181m x 3.063m	13'9" x 10'1"
Bedroom 3	2.995m x 2.965m	9'10" x 9'9"
<b>Total Area</b>	<b>88.9 sq.m.</b>	<b>957 sq.ft.</b>

### PLOT 39 TYPE CQ19

Kitchen/Living/Dining Room	7.400m x 4.905m	24'3" x 16'1"
Bedroom 1	4.050m x 3.423m	13'3" x 11'3"
Bedroom 2	3.163m x 2.463m	10'5" x 8'1"
<b>Total Area</b>	<b>69.4 sq.m.</b>	<b>747 sq.ft.</b>

### PLOTS 40, 42 & 66 TYPE CQ4

Kitchen/Living/Dining Room	7.200m x 3.600m	23'7" x 11'10"
Bedroom 1	5.455m x 2.763m	17'11" x 9'1"
Bedroom 2	3.885m x 3.278m	12'9" x 10'9"
<b>Total Area</b>	<b>72.0 sq.m.</b>	<b>775 sq.ft.</b>

### PLOT 41 TYPE CQ4v1

Kitchen/Living/Dining Room	6.872m x 3.600m	22'7" x 11'10"
Bedroom 1	5.455m x 2.763m	17'11" x 9'1"
Bedroom 2	3.885m x 3.278m	12'9" x 10'9"
<b>Total Area</b>	<b>70.7 sq.m.</b>	<b>761 sq.ft.</b>

### PLOT 43 TYPE CQ57

Kitchen/Living/Dining Room	7.200m x 5.055m	23'7" x 16'7"
Bedroom 1	6.703m x 4.642m	22'0" x 15'3"
Bedroom 2	4.642m x 2.750m	15'3" x 9'0"
<b>Total Area</b>	<b>92.4 sq.m.</b>	<b>995 sq.ft.</b>

### PLOT 64 TYPE CQ17

Kitchen/Living/Dining Room	5.625m x 4.164m	18'5" x 13'8"
Bedroom 1	6.489m x 2.750m	21'3" x 9'0"
Bedroom 2	4.687m x 2.685m	15'4" x 8'10"
<b>Total Area</b>	<b>73.0 sq.m.</b>	<b>786 sq.ft.</b>

### PLOT 65 TYPE CQ18

Kitchen/Living/Dining Room	6.872m x 3.843m	22'7" x 12'7"
Bedroom	3.797m x 3.412m	12'5" x 11'2"
<b>Total Area</b>	<b>51.6 sq.m.</b>	<b>555 sq.ft.</b>

### PLOT 67 TYPE CQ15

Kitchen/Living/Dining Room	6.988m x 4.151m	22'11" x 13'7"
Bedroom 1	3.795m x 3.506m	12'5" x 11'6"
Bedroom 2	3.761m x 3.456m	12'4" x 11'4"
<b>Total Area</b>	<b>75.6 sq.m.</b>	<b>814 sq.ft.</b>

### PLOT 68 TYPE CQ16

Kitchen/Living/Dining Room	7.200m x 5.042m	23'7" x 16'7"
Bedroom	4.905m x 3.213m	16'1" x 10'6"
<b>Total Area</b>	<b>57.1 sq.m.</b>	<b>615 sq.ft.</b>



Some items shown in this key may be subject to change, and positions could vary from those indicated on this floorplan. Please refer to Sales Advisor for details of your selected plot. External finishes, landscaping and configuration may vary from plot to plot. Please refer to Sales Advisor for further details. All dimensions are approximate and should not be used for carpet sizes, appliance spaces or furniture. Furniture not to scale and all positions are indicative. **Kitchen layouts are subject to change.** We operate a policy of continuous improvement and individual features such as kitchen and bathroom layouts, doors, windows, garages and elevational treatments may vary from time to time. Consequently these particulars should be treated as general guidance only and do not constitute a contract, part of a contract or a warranty.



KEY	
<span style="display:inline-block; width:10px; height:10px; background-color:#f0f0f0; border:1px solid #ccc;"></span>	1 Bedroom Apartment
<span style="display:inline-block; width:10px; height:10px; background-color:#e0e0e0; border:1px solid #ccc;"></span>	2 Bedroom Apartment
<span style="display:inline-block; width:10px; height:10px; background-color:#d0d0d0; border:1px solid #ccc;"></span>	3 Bedroom Apartment
<span style="display:inline-block; width:10px; height:10px; background-color:#fff; border:1px solid #ccc;"></span>	Fitted Wardrobe
<span style="display:inline-block; width:10px; height:10px; border-left:1px solid #ccc;"></span>	Indicates where dimensions are taken from

# AVON APARTMENTS (CORES A3, A4 & A5)

## Levels 2 & 3

### PLOTS 44 & 51 TYPE CQ19

Kitchen/Living/Dining Room	7.400m x 4.905m	24'3" x 16'1"
Bedroom 1	4.050m x 3.423m	13'3" x 11'3"
Bedroom 2	3.163m x 2.463m	10'5" x 8'1"
<b>Total Area</b>	<b>69.4 sq.m.</b>	<b>747 sq.ft.</b>

### PLOTS 45, 47, 54, 69 & 74 TYPE CQ4

Kitchen/Living/Dining Room	7.200m x 3.600m	23'7" x 11'10"
Bedroom 1	5.455m x 2.763m	17'11" x 9'1"
Bedroom 2	3.885m x 3.278m	12'9" x 10'9"
<b>Total Area</b>	<b>72.0 sq.m.</b>	<b>775 sq.ft.</b>

### PLOTS 46 & 53 TYPE CQ4v1

Kitchen/Living/Dining Room	6.872m x 3.600m	22'7" x 11'10"
Bedroom 1	5.455m x 2.763m	17'11" x 9'1"
Bedroom 2	3.885m x 3.278m	12'9" x 10'9"
<b>Total Area</b>	<b>70.7 sq.m.</b>	<b>761 sq.ft.</b>

### PLOTS 48 & 55 TYPE CQ9

Kitchen/Living/Dining Room	7.200m x 3.885m	23'7" x 12'9"
Bedroom	4.182m x 3.245m	13'9" x 10'8"
<b>Total Area</b>	<b>50.2 sq.m.</b>	<b>540 sq.ft.</b>

### PLOTS 49 & 56 TYPE CQ51

Kitchen/Living/Dining Room	7.200m x 4.392m	23'7" x 14'5"
Bedroom 1	5.216m x 3.546m	17'1" x 11'8"
Bedroom 2	3.418m x 2.221m	11'3" x 7'3"
<b>Total Area</b>	<b>65.2 sq.m.</b>	<b>702 sq.ft.</b>

### PLOTS 50 & 57 TYPE CQ52

Kitchen/Living/Dining Room	5.881m x 5.872m	19'4" x 19'3"
Bedroom 1	4.970m x 4.656m	16'4" x 15'3"
Bedroom 2	3.918m x 3.662m	12'10" x 12'0"
<b>Total Area</b>	<b>86.0 sq.m.</b>	<b>926 sq.ft.</b>

### PLOTS 70 & 75 TYPE CQ15

Kitchen/Living/Dining Room	6.988m x 4.151m	22'11" x 13'7"
Bedroom 1	3.795m x 3.506m	12'5" x 11'6"
Bedroom 2	3.761m x 3.456m	12'4" x 11'4"
<b>Total Area</b>	<b>75.6 sq.m.</b>	<b>814 sq.ft.</b>

### PLOTS 71 & 76 TYPE CQ53

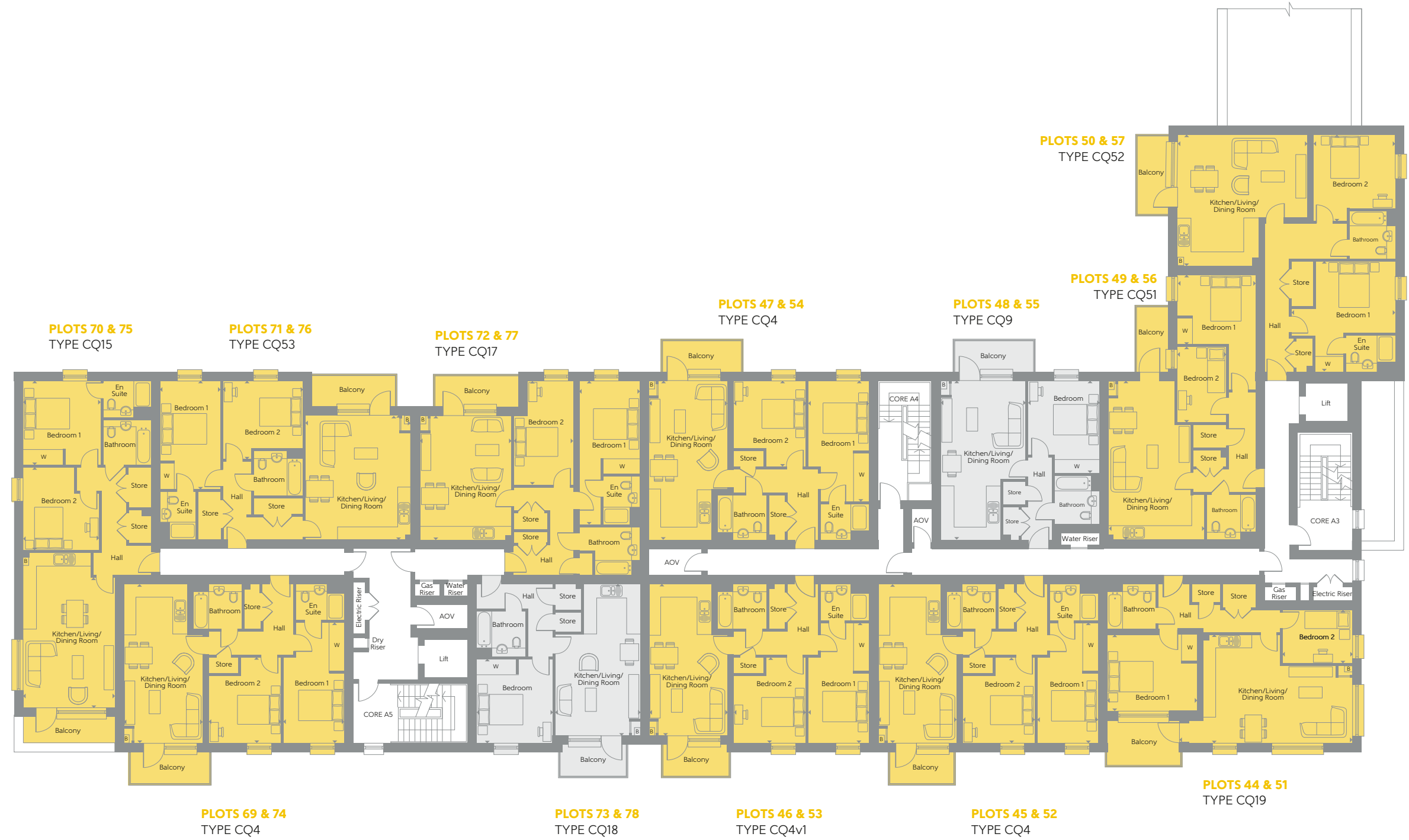
Kitchen/Living/Dining Room	5.625m x 4.784m	18'5" x 15'8"
Bedroom 1	4.905m x 2.763m	16'1" x 9'1"
Bedroom 2	3.613m x 3.552m	11'10" x 11'8"
<b>Total Area</b>	<b>74.0 sq.m.</b>	<b>797 sq.ft.</b>

### PLOTS 72 & 77 TYPE CQ17

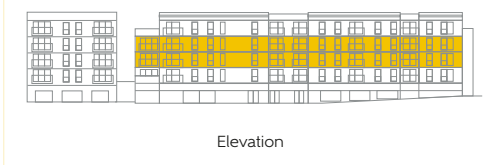
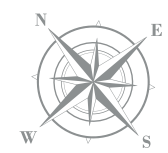
Kitchen/Living/Dining Room	5.625m x 4.164m	18'5" x 13'8"
Bedroom 1	6.489m x 2.750m	21'3" x 9'0"
Bedroom 2	4.687m x 2.685m	15'4" x 8'10"
<b>Total Area</b>	<b>73.0 sq.m.</b>	<b>786 sq.ft.</b>

### PLOTS 73 & 78 TYPE CQ18

Kitchen/Living/Dining Room	6.872m x 3.843m	22'7" x 12'7"
Bedroom	3.797m x 3.412m	12'5" x 11'2"
<b>Total Area</b>	<b>51.6 sq.m.</b>	<b>555 sq.ft.</b>



Some items shown in this key may be subject to change, and positions could vary from those indicated on this floorplan. Please refer to Sales Advisor for details of your selected plot. External finishes, landscaping and configuration may vary from plot to plot. Please refer to Sales Advisor for further details. All dimensions are approximate and should not be used for carpet sizes, appliance spaces or furniture. Furniture not to scale and all positions are indicative. **Kitchen layouts are subject to change.** We operate a policy of continuous improvement and individual features such as kitchen and bathroom layouts, doors, windows, garages and elevational treatments may vary from time to time. Consequently these particulars should be treated as general guidance only and do not constitute a contract, part of a contract or a warranty.



**KEY**

<span style="display:inline-block; width:10px; height:10px; border:1px solid black; background-color:lightblue;"></span> 1 Bedroom Apartment	<span style="display:inline-block; width:10px; height:10px; border:1px solid black; background-color:yellow;"></span> 2 Bedroom Apartment	<span style="display:inline-block; width:10px; height:10px; border:1px solid black; background-color:yellow;"></span> W Fitted Wardrobe	<span style="display:inline-block; width:10px; height:10px; border:1px solid black; background-color:yellow;"></span> ▶ Indicates where dimensions are taken from
--	---	---	---

# AVON APARTMENTS (CORES A3, A4 & A5)

## Level 4

### PLOT 58 TYPE CQ19

Kitchen/Living/Dining Room	7.400m x 4.905m	24'3" x 16'1"
Bedroom 1	4.050m x 3.423m	13'3" x 11'3"
Bedroom 2	3.163m x 2.463m	10'5" x 8'1"
<b>Total Area</b>	<b>69.4 sq.m.</b>	<b>747 sq.ft.</b>

### PLOTS 59, 61 & 79 TYPE CQ4

Kitchen/Living/Dining Room	7.200m x 3.600m	23'7" x 11'10"
Bedroom 1	5.455m x 2.763m	17'11" x 9'1"
Bedroom 2	3.885m x 3.278m	12'9" x 10'9"
<b>Total Area</b>	<b>72.0 sq.m.</b>	<b>775 sq.ft.</b>

### PLOT 60 TYPE CQ4v1

Kitchen/Living/Dining Room	6.872m x 3.600m	22'7" x 11'10"
Bedroom 1	5.455m x 2.763m	17'11" x 9'1"
Bedroom 2	3.885m x 3.278m	12'9" x 10'9"
<b>Total Area</b>	<b>70.7 sq.m.</b>	<b>761 sq.ft.</b>

### PLOT 62 TYPE CQ9

Kitchen/Living/Dining Room	7.200m x 3.885m	23'7" x 12'9"
Bedroom	4.182m x 3.245m	13'9" x 10'8"
<b>Total Area</b>	<b>50.2 sq.m.</b>	<b>540 sq.ft.</b>

### PLOT 63 TYPE CQ55

Kitchen/Living/Dining Room	7.200m x 3.367m	23'7" x 11'1"
Bedroom	3.885m x 3.225m	12'9" x 10'7"
<b>Total Area</b>	<b>48.1 sq.m.</b>	<b>518 sq.ft.</b>

### PLOT 80 TYPE CQ53

Kitchen/Living/Dining Room	5.625m x 4.784m	18'5" x 15'8"
Bedroom 1	4.905m x 2.763m	16'1" x 9'1"
Bedroom 2	3.613m x 3.552m	11'10" x 11'8"
<b>Total Area</b>	<b>74.0 sq.m.</b>	<b>797 sq.ft.</b>

### PLOT 81 TYPE CQ17

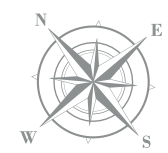
Kitchen/Living/Dining Room	5.625m x 4.164m	18'5" x 13'8"
Bedroom 1	6.489m x 2.750m	21'3" x 9'0"
Bedroom 2	4.687m x 2.685m	15'4" x 8'10"
<b>Total Area</b>	<b>73.0 sq.m.</b>	<b>786 sq.ft.</b>

### PLOT 82 TYPE CQ18

Kitchen/Living/Dining Room	6.872m x 3.843m	22'7" x 12'7"
Bedroom	3.797m x 3.412m	12'5" x 11'2"
<b>Total Area</b>	<b>51.6 sq.m.</b>	<b>555 sq.ft.</b>



Some items shown in this key may be subject to change, and positions could vary from those indicated on this floorplan. Please refer to Sales Advisor for details of your selected plot. External finishes, landscaping and configuration may vary from plot to plot. Please refer to Sales Advisor for further details. All dimensions are approximate and should not be used for carpet sizes, appliance spaces or furniture. Furniture not to scale and all positions are indicative. **Kitchen layouts are subject to change.** We operate a policy of continuous improvement and individual features such as kitchen and bathroom layouts, doors, windows, garages and elevational treatments may vary from time to time. Consequently these particulars should be treated as general guidance only and do not constitute a contract, part of a contract or a warranty.



**KEY**

<span style="display:inline-block; width:10px; height:10px; border:1px solid black; background-color:white;"></span> 1 Bedroom Apartment	<span style="display:inline-block; width:10px; height:10px; border:1px solid black; background-color:white;"></span> W Fitted Wardrobe
<span style="display:inline-block; width:10px; height:10px; border:1px solid black; background-color:yellow;"></span> 2 Bedroom Apartment	<span style="display:inline-block; width:10px; height:10px; border:1px solid black; background-color:white;"></span> ▶ Indicates where dimensions are taken from

# AVON APARTMENTS (CORES A6 & A7)

## Level 1

### PLOT 83 TYPE CQ13

Kitchen/Living/Dining Room	7.037m x 3.635m	23'1" x 11'11"
Bedroom 1	5.947m x 2.750m	19'6" x 9'0"
Bedroom 2	4.817m x 2.672m	15'10" x 8'9"
<b>Total Area</b>	<b>75.9 sq.m.</b>	<b>817 sq.ft.</b>

### PLOT 84 TYPE CQ14v1

Kitchen/Living/Dining Room	7.155m x 3.994m	23'6" x 13'1"
Bedroom 1	3.450m x 3.440m	11'4" x 11'3"
Bedroom 2	4.794m x 2.750m	15'9" x 9'0"
<b>Total Area</b>	<b>74.2 sq.m.</b>	<b>799 sq.ft.</b>

### PLOT 85 TYPE CQ14

Kitchen/Living/Dining Room	7.155m x 4.110m	23'6" x 13'6"
Bedroom 1	3.450m x 3.440m	11'4" x 11'3"
Bedroom 2	4.375m x 2.750m	14'4" x 9'0"
<b>Total Area</b>	<b>72.5 sq.m.</b>	<b>780 sq.ft.</b>

### PLOTS 86 & 87 TYPE CQ12

Kitchen/Living/Dining Room	6.972m x 3.141m	22'10" x 10'4"
Bedroom	3.887m x 3.463m	12'9" x 11'4"
<b>Total Area</b>	<b>50.1 sq.m.</b>	<b>539 sq.ft.</b>

### PLOT 88 TYPE CQ7

Kitchen/Living/Dining Room	7.822m x 3.327m	25'8" x 10'11"
Bedroom 1	4.450m x 2.813m	14'7" x 9'3"
Bedroom 2	3.493m x 2.488m	11'6" x 8'2"
<b>Total Area</b>	<b>65.0 sq.m.</b>	<b>700 sq.ft.</b>

### PLOT 89 TYPE CQ8

Kitchen/Living/Dining Room	6.235m x 3.459m	20'5" x 11'4"
Bedroom 1	5.792m x 2.804m	19'0" x 9'2"
Bedroom 2	3.492m x 2.413m	11'5" x 7'11"
<b>Total Area</b>	<b>69.0 sq.m.</b>	<b>743 sq.ft.</b>

### PLOT 114 TYPE CQ6

Kitchen/Living/Dining Room	7.415m x 3.695m	24'4" x 12'1"
Bedroom	7.159m x 2.835m	23'6" x 9'4"
<b>Total Area</b>	<b>60.4 sq.m.</b>	<b>650 sq.ft.</b>

### PLOT 115 TYPE CQ5

Kitchen/Living/Dining Room	6.239m x 3.729m	20'6" x 12'3"
Bedroom 1	4.165m x 3.220m	13'8" x 10'7"
Bedroom 2	3.729m x 3.215m	12'3" x 10'7"
<b>Total Area</b>	<b>66.1 sq.m.</b>	<b>711 sq.ft.</b>

### PLOTS 116, 117 & 118 TYPE CQ4

Kitchen/Living/Dining Room	7.200m x 3.600m	23'7" x 11'10"
Bedroom 1	5.455m x 2.763m	17'11" x 9'1"
Bedroom 2	3.885m x 3.278m	12'9" x 10'9"
<b>Total Area</b>	<b>72.0 sq.m.</b>	<b>775 sq.ft.</b>

### PLOT 119 TYPE CQ10

Kitchen/Living/Dining Room	7.219m x 3.635m	23'8" x 11'11"
Bedroom 1	3.648m x 3.305m	12'0" x 10'10"
Bedroom 2	5.279m x 2.650m	17'4" x 8'8"
<b>Total Area</b>	<b>73.5 sq.m.</b>	<b>791 sq.ft.</b>

### PLOT 120 TYPE CQ11

Kitchen/Living/Dining Room	7.200m x 3.732m	23'7" x 12'3"
Bedroom	5.055m x 3.420m	16'7" x 11'3"
<b>Total Area</b>	<b>52.1 sq.m.</b>	<b>561 sq.ft.</b>



First Floor

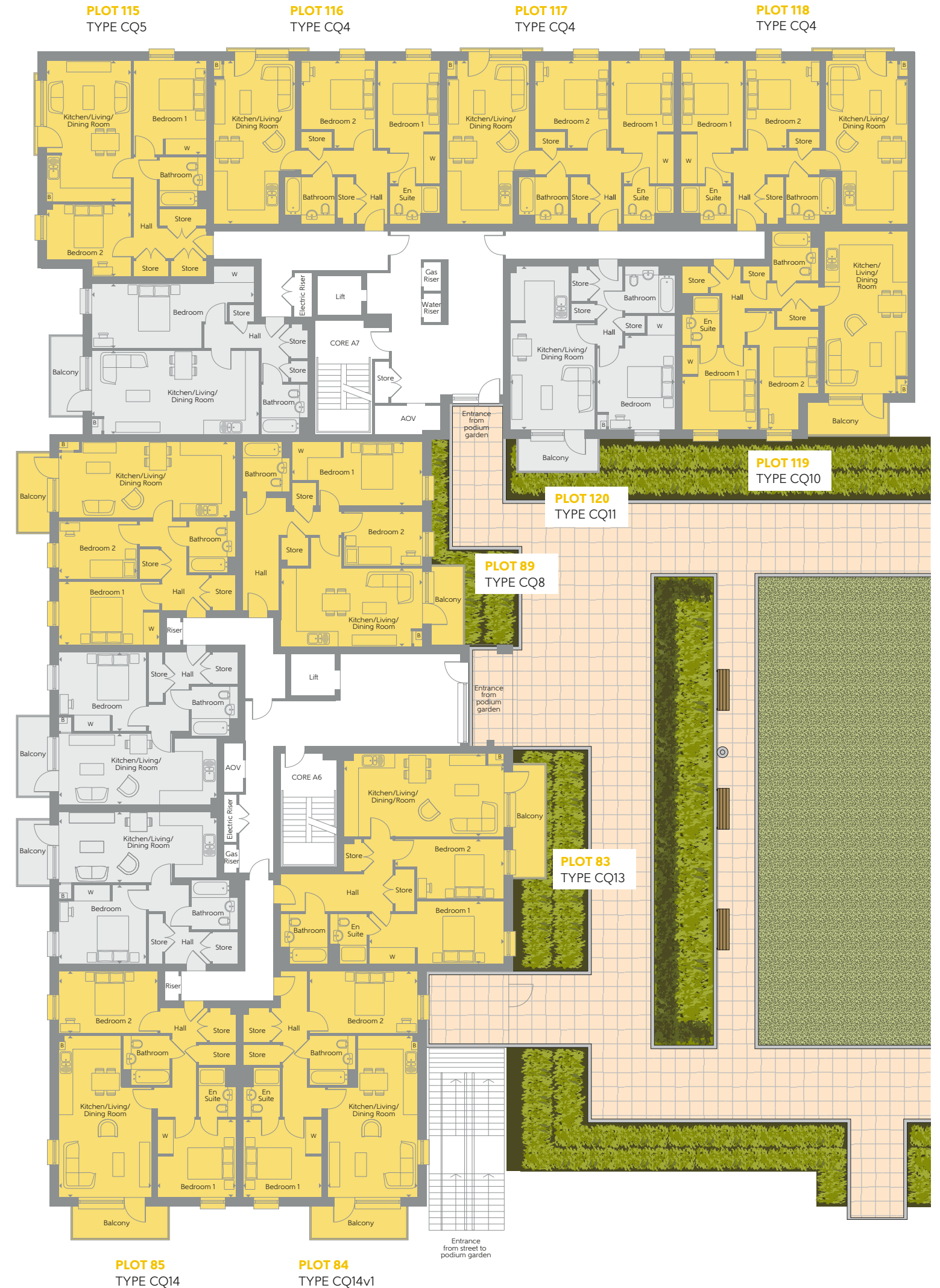


Elevation

#### KEY

	1 Bedroom Apartment		Fitted Wardrobe
	2 Bedroom Apartment		Indicates where dimensions are taken from

Some items shown in this key may be subject to change, and positions could vary from those indicated on this floorplan. Please refer to Sales Advisor for details of your selected plot. External finishes, landscaping and configuration may vary from plot to plot. Please refer to Sales Advisor for further details. All dimensions are approximate and should not be used for carpet sizes, appliance spaces or furniture. Furniture not to scale and all positions are indicative. **Kitchen layouts are subject to change.** We operate a policy of continuous improvement and individual features such as kitchen and bathroom layouts, doors, windows, garages and elevational treatments may vary from time to time. Consequently these particulars should be treated as general guidance only and do not constitute a contract, part of a contract or a warranty.



# AVON APARTMENTS (CORES A6 & A7)

## Levels 2 & 3

### PLOTS 90 & 98 TYPE CQ49

Kitchen/Living/Dining Room	7.692m x 3.282m	25'3" x 10'9"
Bedroom	4.612m x 2.763m	15'2" x 9'1"
<b>Total Area</b>	<b>54.1 sq.m.</b>	<b>582 sq.ft.</b>

### PLOTS 91 & 99 TYPE CQ14v1

Kitchen/Living/Dining Room	7.155m x 3.994m	23'6" x 13'1"
Bedroom 1	3.450m x 3.440m	11'4" x 11'3"
Bedroom 2	4.794m x 2.750m	15'9" x 9'0"
<b>Total Area</b>	<b>74.2 sq.m.</b>	<b>799 sq.ft.</b>

### PLOTS 92 & 100 TYPE CQ14

Kitchen/Living/Dining Room	7.155m x 4.110m	23'6" x 13'6"
Bedroom 1	3.450m x 3.440m	11'4" x 11'3"
Bedroom 2	4.375m x 2.750m	14'4" x 9'0"
<b>Total Area</b>	<b>72.5 sq.m.</b>	<b>780 sq.ft.</b>

### PLOTS 93, 94, 101 & 102 TYPE CQ12

Kitchen/Living/Dining Room	6.972m x 3.141m	22'10" x 10'4"
Bedroom	3.887m x 3.463m	12'9" x 11'4"
<b>Total Area</b>	<b>50.1 sq.m.</b>	<b>539 sq.ft.</b>

### PLOTS 95 & 103 TYPE CQ7

Kitchen/Living/Dining Room	7.822m x 3.327m	25'8" x 10'11"
Bedroom 1	4.450m x 2.813m	14'7" x 9'3"
Bedroom 2	3.493m x 2.488m	11'6" x 8'2"
<b>Total Area</b>	<b>65.0 sq.m.</b>	<b>700 sq.ft.</b>

### PLOTS 96 & 104 TYPE CQ8

Kitchen/Living/Dining Room	6.235m x 3.459m	20'5" x 11'4"
Bedroom 1	5.792m x 2.804m	19'0" x 9'2"
Bedroom 2	3.492m x 2.413m	11'5" x 7'11"
<b>Total Area</b>	<b>69.0 sq.m.</b>	<b>743 sq.ft.</b>

### PLOTS 97 & 105 TYPE CQ50

Kitchen/Living/Dining Room	7.037m x 3.885m	23'1" x 12'9"
Bedroom 1	4.742m x 3.220m	15'7" x 10'7"
<b>Total Area</b>	<b>50.6 sq.m.</b>	<b>545 sq.ft.</b>

### PLOTS 121 & 128 TYPE CQ6

Kitchen/Living/Dining Room	7.415m x 3.695m	24'4" x 12'1"
Bedroom	7.159m x 2.835m	23'6" x 9'4"
<b>Total Area</b>	<b>60.4 sq.m.</b>	<b>650 sq.ft.</b>

### PLOTS 122 & 129 TYPE CQ5

Kitchen/Living/Dining Room	6.239m x 3.729m	20'6" x 12'3"
Bedroom 1	4.165m x 3.220m	13'8" x 10'7"
Bedroom 2	3.729m x 3.215m	12'3" x 10'7"
<b>Total Area</b>	<b>66.1 sq.m.</b>	<b>711 sq.ft.</b>

### PLOTS 123, 124, 125, 127, 130, 131, 132 & 134 TYPE CQ4

Kitchen/Living/Dining Room	7.200m x 3.600m	23'7" x 11'10"
Bedroom 1	5.455m x 2.763m	17'11" x 9'1"
Bedroom 2	3.885m x 3.278m	12'9" x 10'9"
<b>Total Area</b>	<b>72.0 sq.m.</b>	<b>775 sq.ft.</b>

### PLOTS 126 & 133 TYPE CQ10

Kitchen/Living/Dining Room	7.219m x 3.635m	23'8" x 11'11"
Bedroom 1	3.648m x 3.305m	12'0" x 10'10"
Bedroom 2	5.279m x 2.650m	17'4" x 8'8"
<b>Total Area</b>	<b>73.5 sq.m.</b>	<b>791 sq.ft.</b>



Second & Third Floors

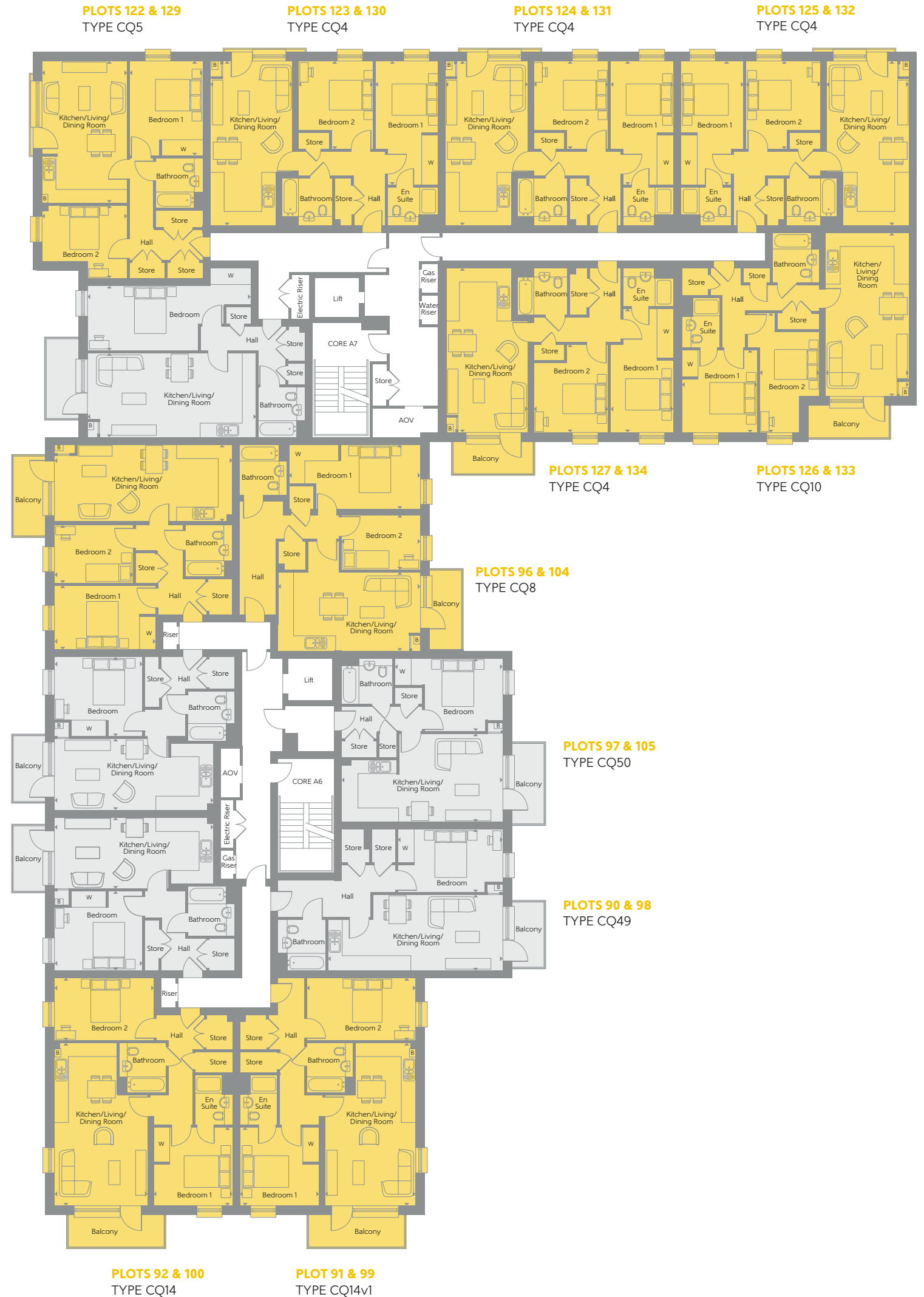


Elevation

#### KEY

	1 Bedroom Apartment		Fitted Wardrobe
	2 Bedroom Apartment		Indicates where dimensions are taken from

Some items shown in this key may be subject to change, and positions could vary from those indicated on this floorplan. Please refer to Sales Advisor for details of your selected plot. External finishes, landscaping and configuration may vary from plot to plot. Please refer to Sales Advisor for further details. All dimensions are approximate and should not be used for carpet sizes, appliance spaces or furniture. Furniture not to scale and all positions are indicative. **Kitchen layouts are subject to change.** We operate a policy of continuous improvement and individual features such as kitchen and bathroom layouts, doors, windows, garages and elevational treatments may vary from time to time. Consequently these particulars should be treated as general guidance only and do not constitute a contract, part of a contract or a warranty.



# AVON APARTMENTS (CORES A6 & A7)

## Level 4

### PLOT 106 TYPE CQ49

Kitchen/Living/Dining Room	7.692m x 3.282m	25'3" x 10'9"
Bedroom	4.612m x 2.763m	15'2" x 9'1"
<b>Total Area</b>	<b>54.1 sq.m.</b>	<b>582 sq.ft.</b>

### PLOT 107 TYPE CQ14v1

Kitchen/Living/Dining Room	7.155m x 3.994m	23'6" x 13'1"
Bedroom 1	3.450m x 3.440m	11'4" x 11'3"
Bedroom 2	4.794m x 2.750m	15'9" x 9'0"
<b>Total Area</b>	<b>74.2 sq.m.</b>	<b>799 sq.ft.</b>

### PLOT 108 TYPE CQ14

Kitchen/Living/Dining Room	7.155m x 4.110m	23'6" x 13'6"
Bedroom 1	3.450m x 3.440m	11'4" x 11'3"
Bedroom 2	4.375m x 2.750m	14'4" x 9'0"
<b>Total Area</b>	<b>72.5 sq.m.</b>	<b>780 sq.ft.</b>

### PLOTS 109 & 110 TYPE CQ12

Kitchen/Living/Dining Room	6.972m x 3.141m	22'10" x 10'4"
Bedroom	3.887m x 3.463m	12'9" x 11'4"
<b>Total Area</b>	<b>50.1 sq.m.</b>	<b>539 sq.ft.</b>

### PLOT 111 TYPE CQ7

Kitchen/Living/Dining Room	7.822m x 3.327m	25'8" x 10'11"
Bedroom 1	4.450m x 2.813m	14'7" x 9'3"
Bedroom 2	3.493m x 2.488m	11'6" x 8'2"
<b>Total Area</b>	<b>65.0 sq.m.</b>	<b>700 sq.ft.</b>

### PLOT 112 TYPE CQ8

Kitchen/Living/Dining Room	6.235m x 3.459m	20'5" x 11'4"
Bedroom 1	5.792m x 2.804m	19'0" x 9'2"
Bedroom 2	3.492m x 2.413m	11'5" x 7'11"
<b>Total Area</b>	<b>69.0 sq.m.</b>	<b>743 sq.ft.</b>

### PLOT 113 TYPE CQ50

Kitchen/Living/Dining Room	7.037m x 3.885m	23'1" x 12'9"
Bedroom	4.742m x 3.220m	15'7" x 10'7"
<b>Total Area</b>	<b>50.6 sq.m.</b>	<b>545 sq.ft.</b>

### PLOT 135 TYPE CQ6

Kitchen/Living/Dining Room	7.415m x 3.695m	24'4" x 12'1"
Bedroom	7.159m x 2.835m	23'6" x 9'4"
<b>Total Area</b>	<b>60.4 sq.m.</b>	<b>650 sq.ft.</b>

### PLOT 136 TYPE CQ5

Kitchen/Living/Dining Room	6.239m x 3.729m	20'6" x 12'3"
Bedroom 1	4.165m x 3.220m	13'8" x 10'7"
Bedroom 2	3.729m x 3.215m	12'3" x 10'7"
<b>Total Area</b>	<b>66.1 sq.m.</b>	<b>711 sq.ft.</b>

### PLOTS 137, 138, 139 & 141 TYPE CQ4

Kitchen/Living/Dining Room	7.200m x 3.600m	23'7" x 11'10"
Bedroom 1	5.455m x 2.763m	17'11" x 9'1"
Bedroom 2	3.885m x 3.278m	12'9" x 10'9"
<b>Total Area</b>	<b>72.0 sq.m.</b>	<b>775 sq.ft.</b>

### PLOT 140 TYPE CQ10

Kitchen/Living/Dining Room	7.219m x 3.635m	23'8" x 11'11"
Bedroom 1	3.648m x 3.305m	12'0" x 10'10"
Bedroom 2	5.279m x 2.650m	17'4" x 8'8"
<b>Total Area</b>	<b>73.5 sq.m.</b>	<b>791 sq.ft.</b>



Fourth Floor

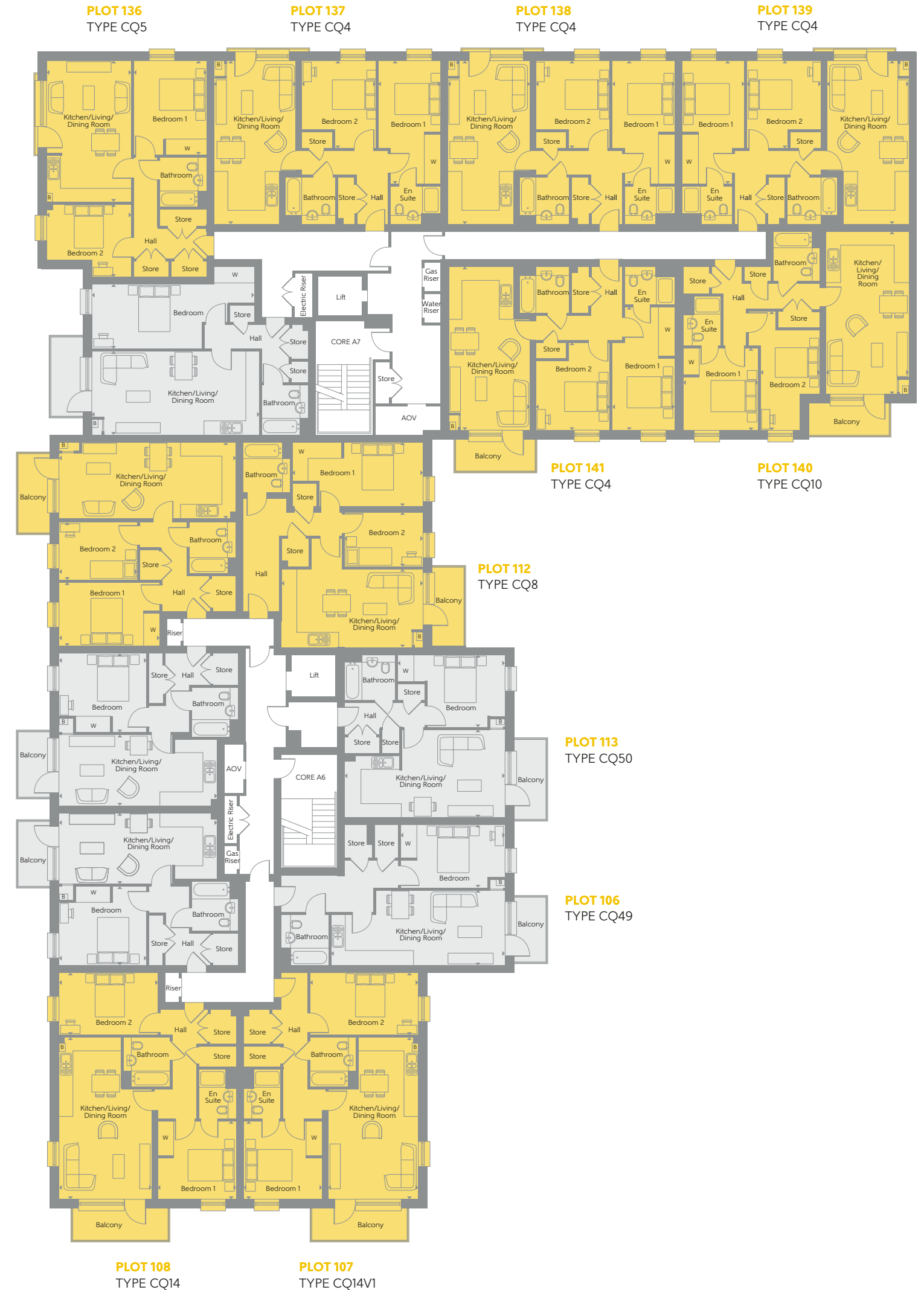


Elevation

#### KEY

	1 Bedroom Apartment		Fitted Wardrobe
	2 Bedroom Apartment		Indicates where dimensions are taken from

Some items shown in this key may be subject to change, and positions could vary from those indicated on this floorplan. Please refer to Sales Advisor for details of your selected plot. External finishes, landscaping and configuration may vary from plot to plot. Please refer to Sales Advisor for further details. All dimensions are approximate and should not be used for carpet sizes, appliance spaces or furniture. Furniture not to scale and all positions are indicative. **Kitchen layouts are subject to change.** We operate a policy of continuous improvement and individual features such as kitchen and bathroom layouts, doors, windows, garages and elevational treatments may vary from time to time. Consequently these particulars should be treated as general guidance only and do not constitute a contract, part of a contract or a warranty.





# BANWELL APARTMENTS

INTRODUCING OUR COLLECTION OF  
1 AND 2 BEDROOM APARTMENTS  
PLOTS 142 - 176



Computer generated image.

# BANWELL APARTMENTS

## Level 1

### PLOT 142 TYPE CQ23

Kitchen/Living/Dining Room	6.902m x 3.050m	22'8" x 10'0"
Bedroom 1	5.308m x 2.914m	17'5" x 9'7"
Bedroom 2	4.059m x 2.850m	13'4" x 9'4"
<b>Total Area</b>	<b>72.9 sq.m.</b>	<b>785 sq.ft.</b>

### PLOT 143 TYPE CQ22

Kitchen/Living/Dining Room	6.550m x 3.885m	21'6" x 12'9"
Bedroom	4.412m x 3.159m	14'6" x 10'4"
<b>Total Area</b>	<b>53.2 sq.m.</b>	<b>573 sq.ft.</b>

### PLOT 144 TYPE CQ4v3

Kitchen/Living/Dining Room	7.000m x 3.600m	23'0" x 11'10"
Bedroom 1	5.455m x 2.763m	17'11" x 9'1"
Bedroom 2	3.880m x 3.278m	12'9" x 10'9"
<b>Total Area</b>	<b>71.3 sq.m.</b>	<b>767 sq.ft.</b>

### PLOTS 145 & 149 TYPE CQ4

Kitchen/Living/Dining Room	7.200m x 3.600m	23'7" x 11'10"
Bedroom 1	5.455m x 2.763m	17'11" x 9'1"
Bedroom 2	3.885m x 3.278m	12'9" x 10'9"
<b>Total Area</b>	<b>72.0 sq.m.</b>	<b>775 sq.ft.</b>

### PLOT 146 TYPE CQ21

Kitchen/Living/Dining Room	5.682m x 4.794m	18'8" x 15'9"
Bedroom	4.198m x 2.977m	13'9" x 9'9"
<b>Total Area</b>	<b>52.7 sq.m.</b>	<b>567 sq.ft.</b>

### PLOT 147 TYPE CQ20

Kitchen/Living/Dining Room	6.055m x 3.945m	19'10" x 12'11"
Bedroom 1	4.196m x 3.707m	13'9" x 12'2"
Bedroom 2	3.945m x 3.533m	12'11" x 11'7"
<b>Total Area</b>	<b>73.1 sq.m.</b>	<b>787 sq.ft.</b>

### PLOT 148 TYPE CQ4v2

Kitchen/Living/Dining Room	6.862m x 3.600m	22'6" x 11'10"
Bedroom 1	5.455m x 2.763m	17'11" x 9'1"
Bedroom 2	3.880m x 3.278m	12'9" x 10'9"
<b>Total Area</b>	<b>70.7 sq.m.</b>	<b>761 sq.ft.</b>

### PLOT 150 TYPE CQ24

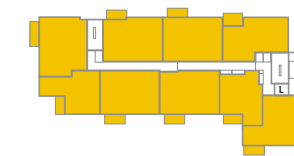
Kitchen/Living/Dining Room	7.446m x 3.886m	24'5" x 12'9"
Bedroom 1	3.593m x 3.471m	11'9" x 11'5"
Bedroom 2	3.463m x 2.413m	11'4" x 7'11"
<b>Total Area</b>	<b>65.0 sq.m.</b>	<b>700 sq.ft.</b>



Some items shown in this key may be subject to change, and positions could vary from those indicated on this floorplan. Please refer to Sales Advisor for details of your selected plot. External finishes, landscaping and configuration may vary from plot to plot. Please refer to Sales Advisor for further details. All dimensions are approximate and should not be used for carpet sizes, appliance spaces or furniture. Furniture not to scale and all positions are indicative. **Kitchen layouts are subject to change.** We operate a policy of continuous improvement and individual features such as kitchen and bathroom layouts, doors, windows, garages and elevational treatments may vary from time to time. Consequently these particulars should be treated as general guidance only and do not constitute a contract, part of a contract or a warranty.



Elevation



First Floor

#### KEY

- 1 Bedroom Apartment
- 2 Bedroom Apartment
- Fitted Wardrobe
- Indicates where dimensions are taken from

# BANWELL APARTMENTS

## Levels 2 & 3

### PLOTS 151 & 160 TYPE CQ23

Kitchen/Living/Dining Room	6.902m x 3.050m	22'8" x 10'0"
Bedroom 1	5.308m x 2.914m	17'5" x 9'7"
Bedroom 2	4.059m x 2.850m	13'4" x 9'4"
<b>Total Area</b>	<b>72.9 sq.m.</b>	<b>785 sq.ft.</b>

### PLOTS 152 & 161 TYPE CQ22

Kitchen/Living/Dining Room	6.550m x 3.885m	21'6" x 12'9"
Bedroom	4.412m x 3.159m	14'6" x 10'4"
<b>Total Area</b>	<b>53.2 sq.m.</b>	<b>573 sq.ft.</b>

### PLOTS 153 & 162 TYPE CQ4v3

Kitchen/Living/Dining Room	7.000m x 3.600m	23'0" x 11'10"
Bedroom 1	5.455m x 2.763m	17'11" x 9'1"
Bedroom 2	3.880m x 3.278m	12'9" x 10'9"
<b>Total Area</b>	<b>71.3 sq.m.</b>	<b>767 sq.ft.</b>

### PLOTS 154, 158, 163 & 167 TYPE CQ4

Kitchen/Living/Dining Room	7.200m x 3.600m	23'7" x 11'10"
Bedroom 1	5.455m x 2.763m	17'11" x 9'1"
Bedroom 2	3.885m x 3.278m	12'9" x 10'9"
<b>Total Area</b>	<b>72.0 sq.m.</b>	<b>775 sq.ft.</b>

### PLOTS 155 & 164 TYPE CQ21

Kitchen/Living/Dining Room	5.682m x 4.794m	18'8" x 15'9"
Bedroom	4.198m x 2.977m	13'9" x 9'9"
<b>Total Area</b>	<b>52.7 sq.m.</b>	<b>567 sq.ft.</b>

### PLOTS 156 & 165 TYPE CQ20

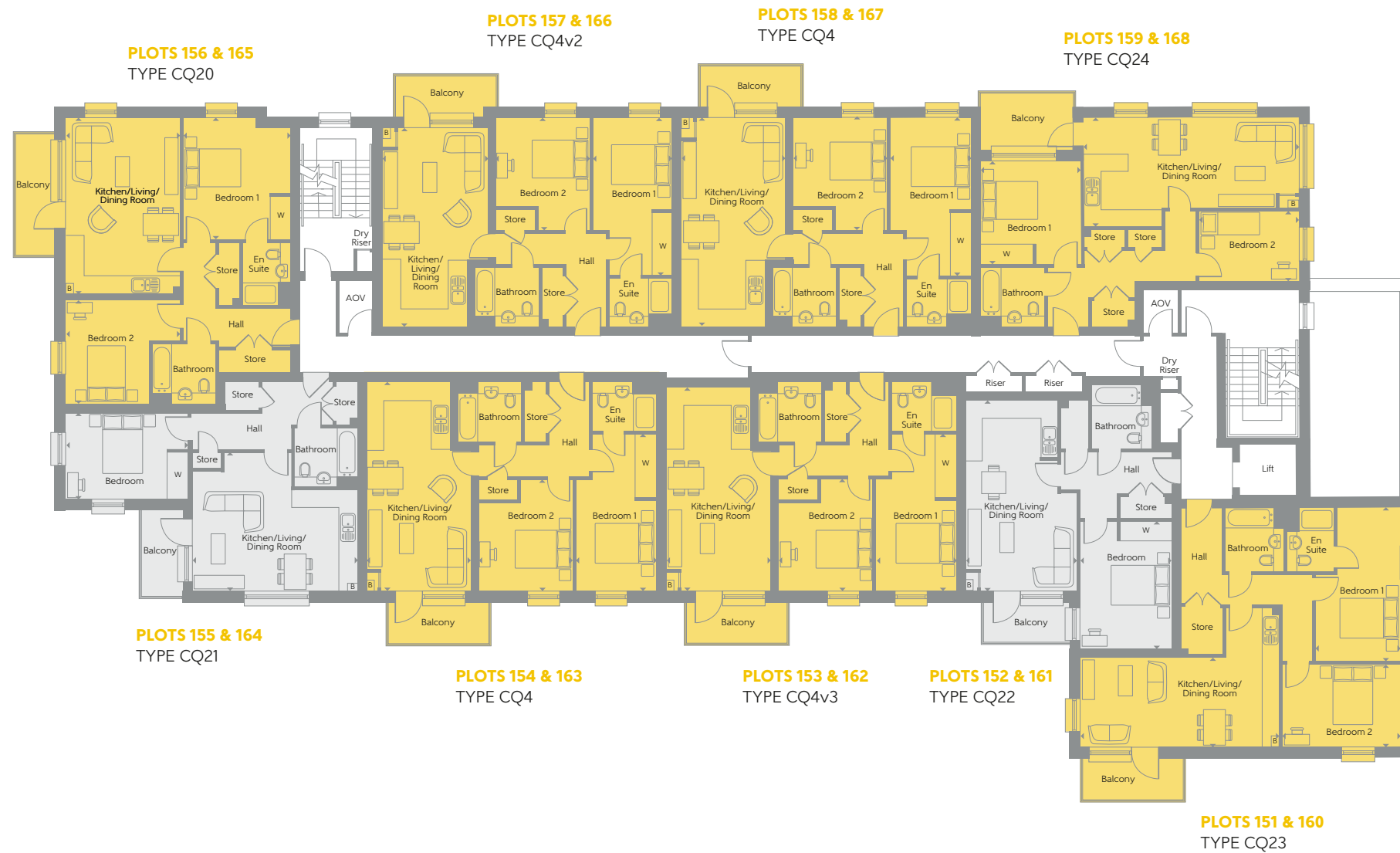
Kitchen/Living/Dining Room	6.055m x 3.945m	19'10" x 12'11"
Bedroom 1	4.196m x 3.707m	13'9" x 12'2"
Bedroom 2	3.945m x 3.533m	12'11" x 11'7"
<b>Total Area</b>	<b>73.1 sq.m.</b>	<b>787 sq.ft.</b>

### PLOTS 157 & 166 TYPE CQ4v2

Kitchen/Living/Dining Room	6.862m x 3.600m	22'6" x 11'10"
Bedroom 1	5.455m x 2.763m	17'11" x 9'1"
Bedroom 2	3.880m x 3.278m	12'9" x 10'9"
<b>Total Area</b>	<b>70.7 sq.m.</b>	<b>761 sq.ft.</b>

### PLOTS 159 & 168 TYPE CQ24

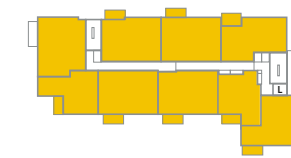
Kitchen/Living/Dining Room	7.446m x 3.886m	24'5" x 12'9"
Bedroom 1	3.593m x 3.471m	11'9" x 11'5"
Bedroom 2	3.463m x 2.413m	11'4" x 7'11"
<b>Total Area</b>	<b>65.0 sq.m.</b>	<b>700 sq.ft.</b>



Some items shown in this key may be subject to change, and positions could vary from those indicated on this floorplan. Please refer to Sales Advisor for details of your selected plot. External finishes, landscaping and configuration may vary from plot to plot. Please refer to Sales Advisor for further details. All dimensions are approximate and should not be used for carpet sizes, appliance spaces or furniture. Furniture not to scale and all positions are indicative. **Kitchen layouts are subject to change.** We operate a policy of continuous improvement and individual features such as kitchen and bathroom layouts, doors, windows, garages and elevational treatments may vary from time to time. Consequently these particulars should be treated as general guidance only and do not constitute a contract, part of a contract or a warranty.



Elevation



Second & Third Floors

#### KEY

- 1 Bedroom Apartment
- 2 Bedroom Apartment
- W Fitted Wardrobe
- ▶ Indicates where dimensions are taken from

# BANWELL APARTMENTS

## Level 4

### PLOT 169 TYPE CQ44

Kitchen/Living/Dining Room	6.550m x 5.849m	21'6" x 19'2"
Bedroom	5.595m x 2.853m	18'4" x 9'4"
<b>Total Area</b>	<b>59.1 sq.m.</b>	<b>636 sq.ft.</b>

### PLOT 170 TYPE CQ4v3

Kitchen/Living/Dining Room	7.000m x 3.600m	23'0" x 11'10"
Bedroom 1	5.455m x 2.763m	17'11" x 9'1"
Bedroom 2	3.880m x 3.278m	12'9" x 10'9"
<b>Total Area</b>	<b>71.3 sq.m.</b>	<b>767 sq.ft.</b>

### PLOTS 171 & 175 TYPE CQ4

Kitchen/Living/Dining Room	7.200m x 3.600m	23'7" x 11'10"
Bedroom 1	5.455m x 2.763m	17'11" x 9'1"
Bedroom 2	3.885m x 3.278m	12'9" x 10'9"
<b>Total Area</b>	<b>72.0 sq.m.</b>	<b>775 sq.ft.</b>

### PLOT 172 TYPE CQ21

Kitchen/Living/Dining Room	5.682m x 4.794m	18'8" x 15'9"
Bedroom	4.198m x 2.977m	13'9" x 9'9"
<b>Total Area</b>	<b>52.7 sq.m.</b>	<b>567 sq.ft.</b>

### PLOT 173 TYPE CQ20

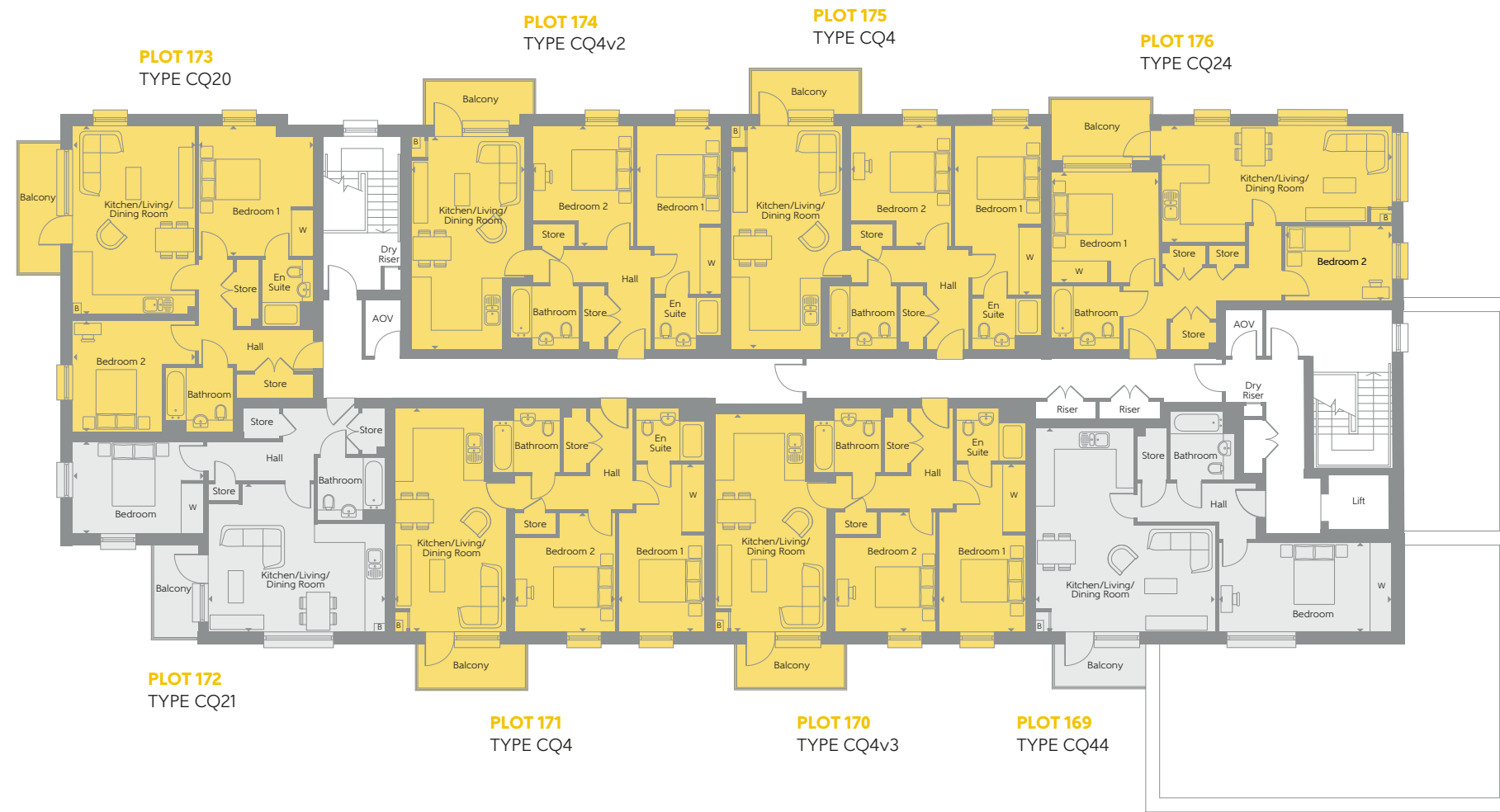
Kitchen/Living/Dining Room	6.055m x 3.945m	19'10" x 12'11"
Bedroom 1	4.196m x 3.707m	13'9" x 12'2"
Bedroom 2	3.945m x 3.533m	12'11" x 11'7"
<b>Total Area</b>	<b>73.1 sq.m.</b>	<b>787 sq.ft.</b>

### PLOT 174 TYPE CQ4v2

Kitchen/Living/Dining Room	6.862m x 3.600m	22'6" x 11'10"
Bedroom 1	5.455m x 2.763m	17'11" x 9'1"
Bedroom 2	3.880m x 3.278m	12'9" x 10'9"
<b>Total Area</b>	<b>70.7 sq.m.</b>	<b>761 sq.ft.</b>

### PLOT 175 TYPE CQ24

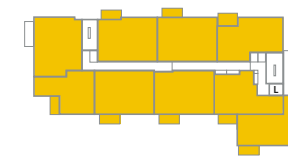
Kitchen/Living/Dining Room	7.446m x 3.886m	24'5" x 12'9"
Bedroom 1	3.593m x 3.471m	11'9" x 11'5"
Bedroom 2	3.463m x 2.413m	11'4" x 7'11"
<b>Total Area</b>	<b>65.0 sq.m.</b>	<b>700 sq.ft.</b>



Some items shown in this key may be subject to change, and positions could vary from those indicated on this floorplan. Please refer to Sales Advisor for details of your selected plot. External finishes, landscaping and configuration may vary from plot to plot. Please refer to Sales Advisor for further details. All dimensions are approximate and should not be used for carpet sizes, appliance spaces or furniture. Furniture not to scale and all positions are indicative. **Kitchen layouts are subject to change.** We operate a policy of continuous improvement and individual features such as kitchen and bathroom layouts, doors, windows, garages and elevational treatments may vary from time to time. Consequently these particulars should be treated as general guidance only and do not constitute a contract, part of a contract or a warranty.



Elevation



Fourth Floor

#### KEY

- 1 Bedroom Apartment
- 2 Bedroom Apartment
- Fitted Wardrobe
- Indicates where dimensions are taken from

# CLYDE APARTMENTS

INTRODUCING OUR COLLECTION OF  
1 AND 2 BEDROOM APARTMENTS  
PLOTS 177 - 191



Computer generated image.

# CLYDE APARTMENTS

## Levels 1, 2 & 3

### PLOTS 177, 181, 182, 186, 187 & 191 TYPE CQ40

Kitchen/Living/Dining Room	7.446m x 3.702m	24'5" x 12'2"
Bedroom 1	3.751m x 3.363m	12'4" x 11'0"
Bedroom 2	3.751m x 2.305m	12'4" x 7'7"
<b>Total Area</b>	<b>64.8 sq.m.</b>	<b>698 sq.ft.</b>

### PLOTS 178, 183 & 188 TYPE CQ41

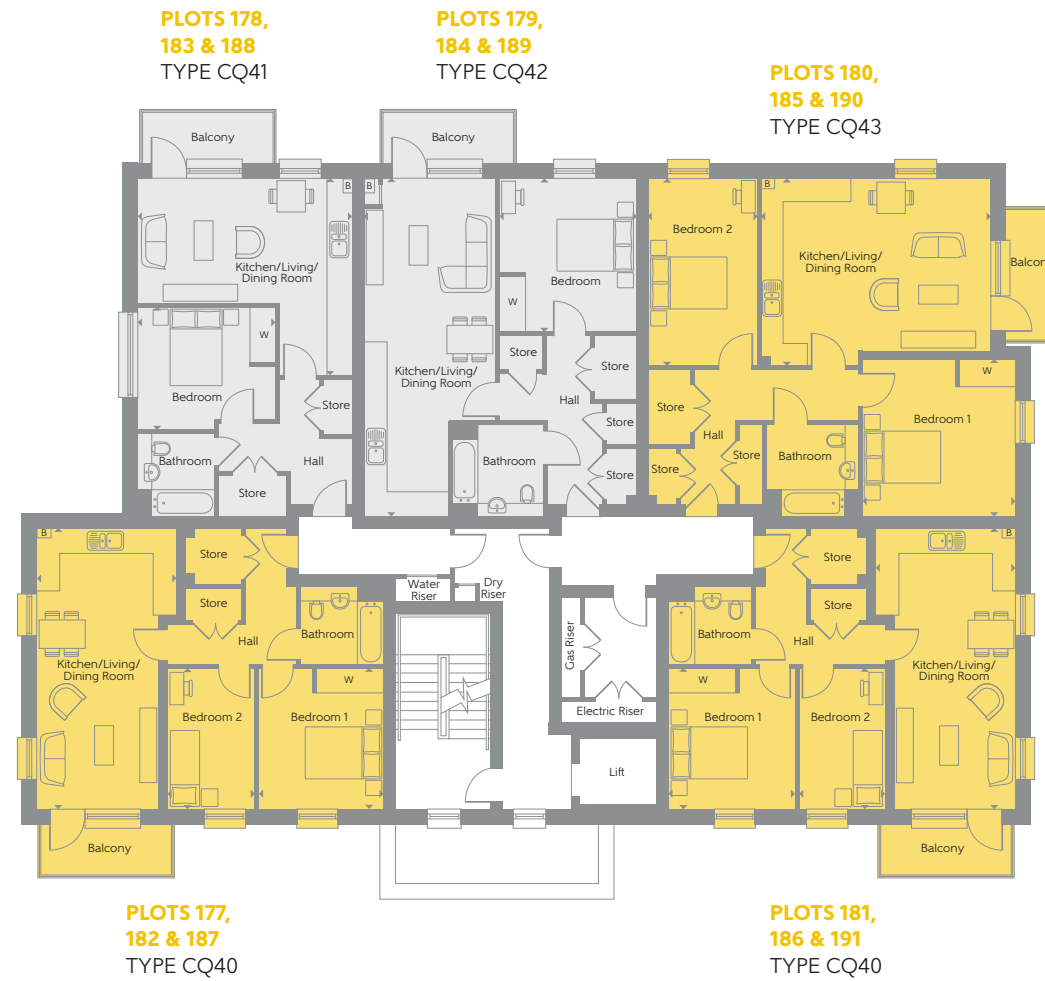
Kitchen/Living/Dining Room	5.700m x 5.223m	18'8" x 17'2"
Bedroom	3.685m x 3.286m	12'1" x 10'9"
<b>Total Area</b>	<b>50.6 sq.m.</b>	<b>545 sq.ft.</b>

### PLOTS 179, 184 & 189 TYPE CQ42

Kitchen/Living/Dining Room	8.988m x 3.505m	29'6" x 11'6"
Bedroom	4.095m x 3.625m	13'5" x 11'11"
<b>Total Area</b>	<b>64.2 sq.m.</b>	<b>691 sq.ft.</b>

### PLOTS 180, 185 & 190 TYPE CQ43

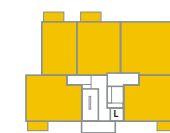
Kitchen/Living/Dining Room	6.127m x 4.985m	20'1" x 16'4"
Bedroom 1	4.150m x 4.105m	13'7" x 13'6"
Bedroom 2	4.985m x 2.900m	16'4" x 9'6"
<b>Total Area</b>	<b>83.8 sq.m.</b>	<b>902 sq.ft.</b>



Some items shown in this key may be subject to change, and positions could vary from those indicated on this floorplan. Please refer to Sales Advisor for details of your selected plot. External finishes, landscaping and configuration may vary from plot to plot. Please refer to Sales Advisor for further details. All dimensions are approximate and should not be used for carpet sizes, appliance spaces or furniture. Furniture not to scale and all positions are indicative. **Kitchen layouts are subject to change.** We operate a policy of continuous improvement and individual features such as kitchen and bathroom layouts, doors, windows, garages and elevational treatments may vary from time to time. Consequently these particulars should be treated as general guidance only and do not constitute a contract, part of a contract or a warranty.



Elevation



First to Fourth Floors

#### KEY

- 1 Bedroom Apartment
- 2 Bedroom Apartment
- Fitted Wardrobe
- Indicates where dimensions are taken from

# EDEN APARTMENTS

INTRODUCING OUR COLLECTION OF  
2 BEDROOM APARTMENTS  
PLOTS 218 - 234



Computer generated image.

# EDEN APARTMENTS

## Levels 1 & 2

### PLOTS 218 & 224 TYPE CQ29

Kitchen/Living/Dining Room	5.157m x 4.375m	16'11" x 14'4"
Bedroom 1	4.355m x 3.464m	14'3" x 11'4"
Bedroom 2	4.683m x 2.751m	15'4" x 9'0"
<b>Total Area</b>	<b>72.0 sq.m.</b>	<b>775 sq.ft.</b>

### PLOTS 219 & 225 TYPE CQ28

Kitchen/Living/Dining Room	4.885m x 4.597m	16'0" x 15'1"
Bedroom 1	4.597m x 2.850m	15'1" x 9'4"
Bedroom 2	3.233m x 2.613m	10'7" x 8'7"
<b>Total Area</b>	<b>63.3 sq.m.</b>	<b>681 sq.ft.</b>

### PLOTS 220 & 226 TYPE CQ30

Kitchen/ Dining Room	3.890m x 3.005m	12'9" x 9'10"
Living Room	3.750m x 3.647m	12'4" x 12'0"
Bedroom 1	5.700m x 2.780m	18'8" x 9'1"
Bedroom 2	4.162m x 2.813m	13'8" x 9'3"
<b>Total Area</b>	<b>76.9 sq.m.</b>	<b>828 sq.ft.</b>

### PLOTS 221 & 227 TYPE CQ31

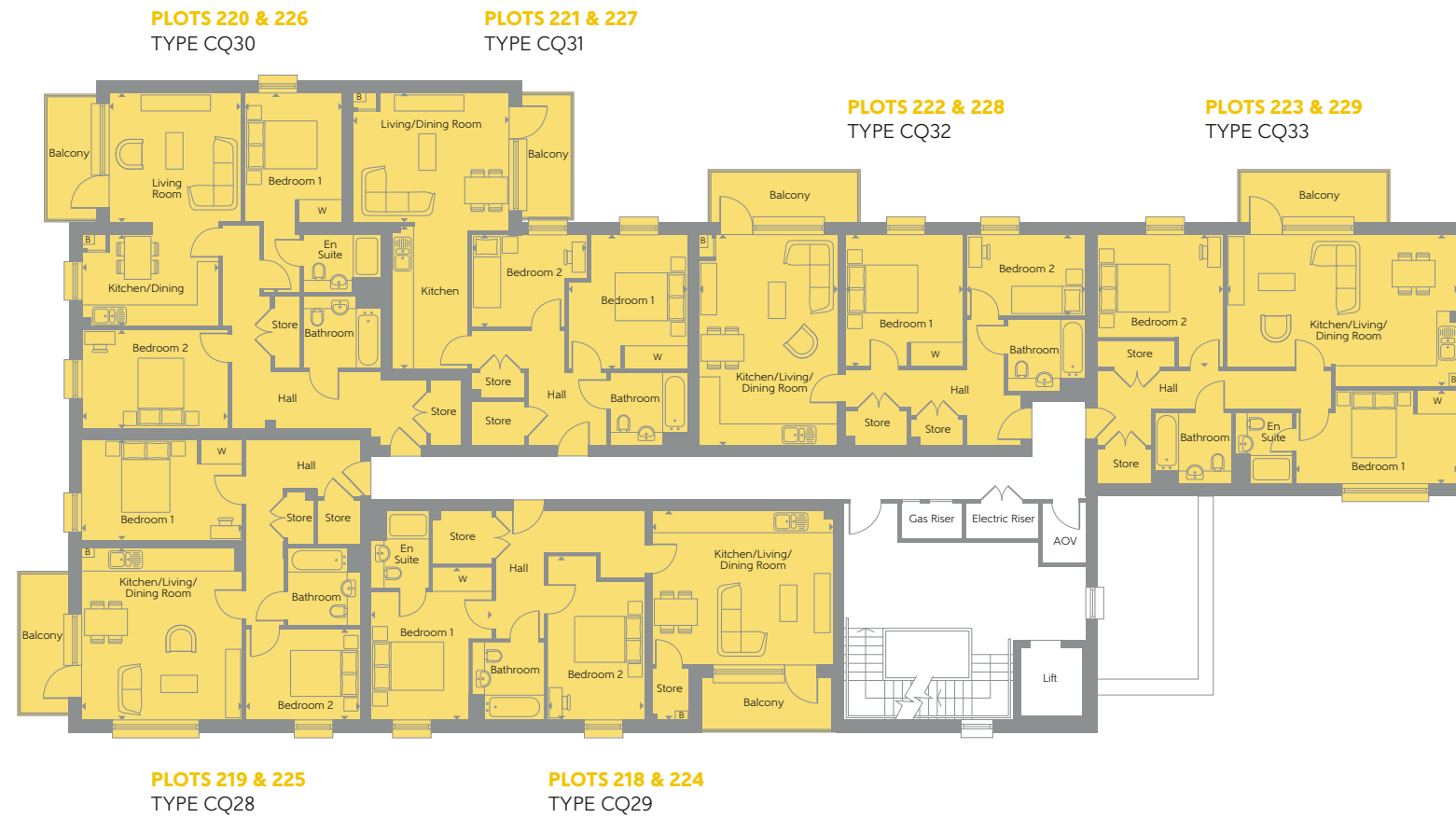
Kitchen	4.117m x 2.176m	13'6" x 7'2"
Living/Dining Room	4.409m x 3.742m	14'6" x 12'3"
Bedroom 1	3.855m x 3.395m	12'8" x 11'2"
Bedroom 2	3.318m x 2.639m	10'11" x 8'8"
<b>Total Area</b>	<b>63.0 sq.m.</b>	<b>678 sq.ft.</b>

### PLOTS 222 & 228 TYPE CQ32

Kitchen/Living/Dining Room	6.000m x 3.950m	19'8" x 13'0"
Bedroom 1	3.763m x 3.345m	12'4" x 11'0"
Bedroom 2	3.395m x 2.305m	11'2" x 7'7"
<b>Total Area</b>	<b>63.4 sq.m.</b>	<b>682 sq.ft.</b>

### PLOTS 223 & 229 TYPE CQ33

Kitchen/Living/Dining Room	6.627m x 4.332m	21'9" x 14'3"
Bedroom 1	4.650m x 2.683m	15'3" x 8'10"
Bedroom 2	3.794m x 3.563m	12'5" x 11'8"
<b>Total Area</b>	<b>73.1 sq.m.</b>	<b>787 sq.ft.</b>



Some items shown in this key may be subject to change, and positions could vary from those indicated on this floorplan. Please refer to Sales Advisor for details of your selected plot. External finishes, landscaping and configuration may vary from plot to plot. Please refer to Sales Advisor for further details. All dimensions are approximate and should not be used for carpet sizes, appliance spaces or furniture. Furniture not to scale and all positions are indicative. **Kitchen layouts are subject to change.** We operate a policy of continuous improvement and individual features such as kitchen and bathroom layouts, doors, windows, garages and elevational treatments may vary from time to time. Consequently these particulars should be treated as general guidance only and do not constitute a contract, part of a contract or a warranty.



Elevation



First to Second Floors

#### KEY

- 1 Bedroom Apartment
- 2 Bedroom Apartment
- W Fitted Wardrobe
- ▶ Indicates where dimensions are taken from



# EDEN APARTMENTS

## Level 3

### PLOT 230 TYPE CQ29

Kitchen/Living/Dining Room	5.157m x 4.375m	16'11" x 14'4"
Bedroom 1	4.355m x 3.464m	14'3" x 11'4"
Bedroom 2	4.683m x 2.751m	15'4" x 9'0"
<b>Total Area</b>	<b>72.0 sq.m.</b>	<b>775 sq.ft.</b>

### PLOT 231 TYPE CQ45

Kitchen/Living/Dining Room	9.502m x 3.103m	31'2" x 10'2"
Bedroom 1	4.263m x 2.750m	14'0" x 9'0"
Bedroom 2	3.205m x 2.388m	10'6" x 7'10"
<b>Total Area</b>	<b>66.2 sq.m.</b>	<b>713 sq.ft.</b>

### PLOT 232 TYPE CQ46

Kitchen/Living/Dining Room	6.154m x 5.509m	20'2" x 18'1"
Bedroom 1	6.000m x 2.804m	19'8" x 9'2"
Bedroom 2	4.843m x 2.845m	15'11" x 9'4"
<b>Total Area</b>	<b>70.4 sq.m.</b>	<b>758 sq.ft.</b>

### PLOT 233 TYPE CQ32

Kitchen/Living/Dining Room	6.000m x 3.950m	19'8" x 13'0"
Bedroom 1	3.763m x 3.345m	12'4" x 11'0"
Bedroom 2	3.395m x 2.305m	11'2" x 7'7"
<b>Total Area</b>	<b>63.4 sq.m.</b>	<b>682 sq.ft.</b>

### PLOT 234 TYPE CQ33

Kitchen/Living/Dining Room	6.627m x 4.332m	21'9" x 14'3"
Bedroom 1	4.650m x 2.683m	15'3" x 8'10"
Bedroom 2	3.794m x 3.563m	12'5" x 11'8"
<b>Total Area</b>	<b>73.1 sq.m.</b>	<b>787 sq.ft.</b>



Some items shown in this key may be subject to change, and positions could vary from those indicated on this floorplan. Please refer to Sales Advisor for details of your selected plot. External finishes, landscaping and configuration may vary from plot to plot. Please refer to Sales Advisor for further details. All dimensions are approximate and should not be used for carpet sizes, appliance spaces or furniture. Furniture not to scale and all positions are indicative. **Kitchen layouts are subject to change.** We operate a policy of continuous improvement and individual features such as kitchen and bathroom layouts, doors, windows, garages and elevational treatments may vary from time to time. Consequently these particulars should be treated as general guidance only and do not constitute a contract, part of a contract or a warranty.



Elevation



Third Floor

#### KEY

- 1 Bedroom Apartment
- 2 Bedroom Apartment
- Fitted Wardrobe
- Indicates where dimensions are taken from

# FENHAM APARTMENTS

INTRODUCING OUR COLLECTION OF  
2 BEDROOM APARTMENTS  
PLOTS 235 - 258



Computer generated image.

# FENHAM APARTMENTS

## Levels 1, 2, 3 & 4

### PLOTS 235, 241, 247 & 253 TYPE CQ4v3

Kitchen/Living/Dining Room	7.000m x 3.600m	23'0" x 11'10"
Bedroom 1	5.455m x 2.763m	17'11" x 9'1"
Bedroom 2	3.880m x 3.278m	12'9" x 10'9"
<b>Total Area</b>	<b>71.3 sq.m.</b>	<b>767 sq.ft.</b>

### PLOTS 236, 242, 248 & 254 TYPE CQ25

Kitchen/Living/Dining Room	5.135m x 4.634m	16'10" x 15'2"
Bedroom 1	3.550m x 3.529m	11'8" x 11'7"
Bedroom 2	3.885m x 2.710m	12'9" x 8'11"
<b>Total Area</b>	<b>66.4 sq.m.</b>	<b>715 sq.ft.</b>

### PLOTS 237, 238, 243, 244, 249, 250, 255 & 256 TYPE CQ4

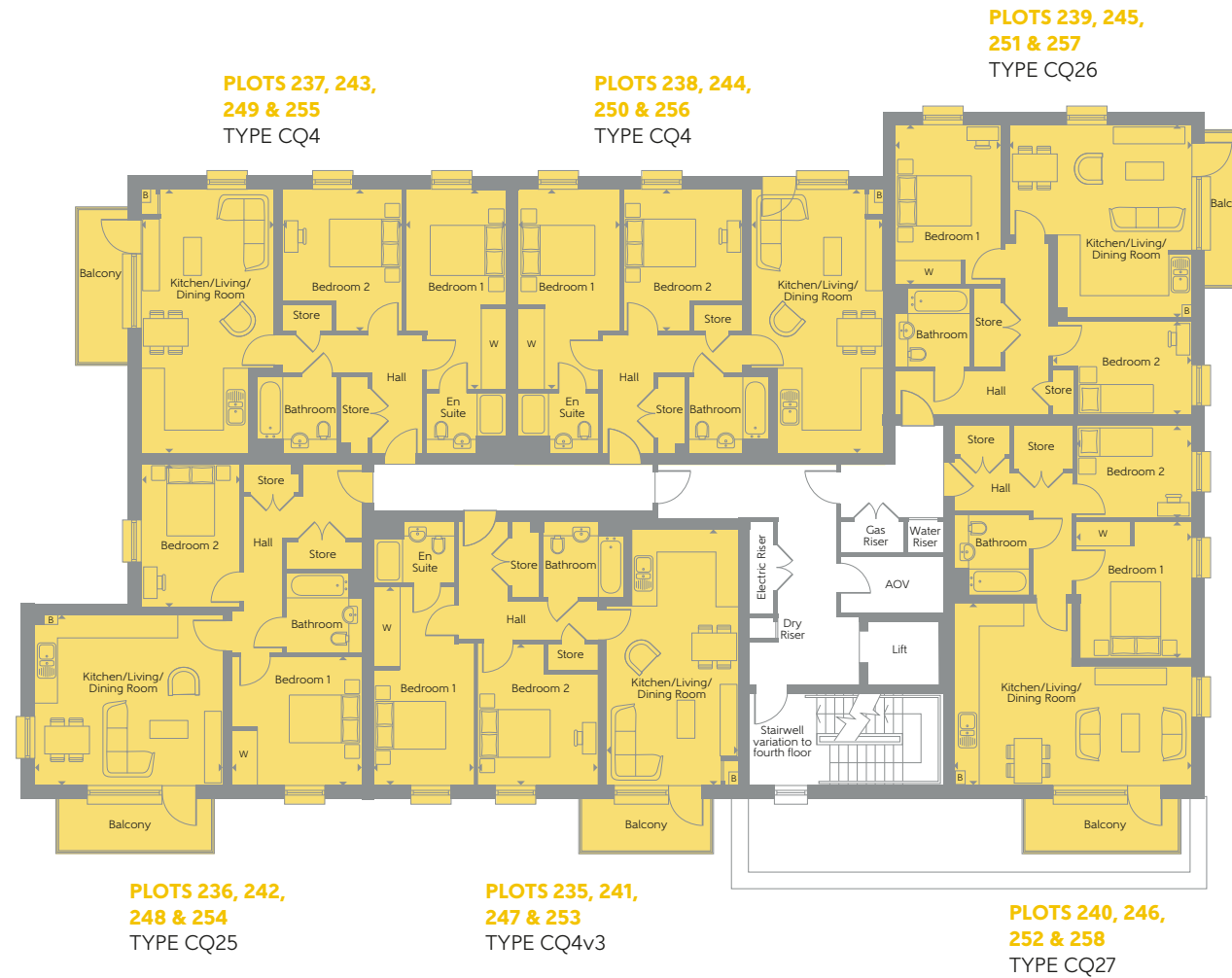
Kitchen/Living/Dining Room	7.200m x 3.600m	23'7" x 11'10"
Bedroom 1	5.455m x 2.763m	17'11" x 9'1"
Bedroom 2	3.885m x 3.278m	12'9" x 10'9"
<b>Total Area</b>	<b>72.0 sq.m.</b>	<b>775 sq.ft.</b>

### PLOTS 239, 245, 251 & 257 TYPE CQ26

Kitchen/Living/Dining Room	5.293m x 4.962m	17'4" x 16'3"
Bedroom 1	4.348m x 2.895m	14'3" x 9'6"
Bedroom 2	3.637m x 2.563m	11'11" x 8'5"
<b>Total Area</b>	<b>64.5 sq.m.</b>	<b>694 sq.ft.</b>

### PLOTS 240, 246, 252 & 258 TYPE CQ27

Kitchen/Living/Dining Room	6.475m x 4.969m	21'3" x 16'4"
Bedroom 1	3.734m x 3.160m	12'3" x 10'4"
Bedroom 2	3.160m x 2.506m	10'4" x 8'3"
<b>Total Area</b>	<b>63.6 sq.m.</b>	<b>685 sq.ft.</b>



Some items shown in this key may be subject to change, and positions could vary from those indicated on this floorplan. Please refer to Sales Advisor for details of your selected plot. External finishes, landscaping and configuration may vary from plot to plot. Please refer to Sales Advisor for further details. All dimensions are approximate and should not be used for carpet sizes, appliance spaces or furniture. Furniture not to scale and all positions are indicative. **Kitchen layouts are subject to change.** We operate a policy of continuous improvement and individual features such as kitchen and bathroom layouts, doors, windows, garages and elevational treatments may vary from time to time. Consequently these particulars should be treated as general guidance only and do not constitute a contract, part of a contract or a warranty.



Elevation

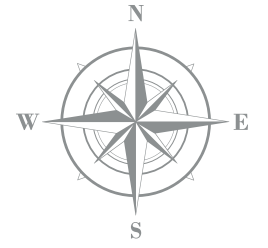
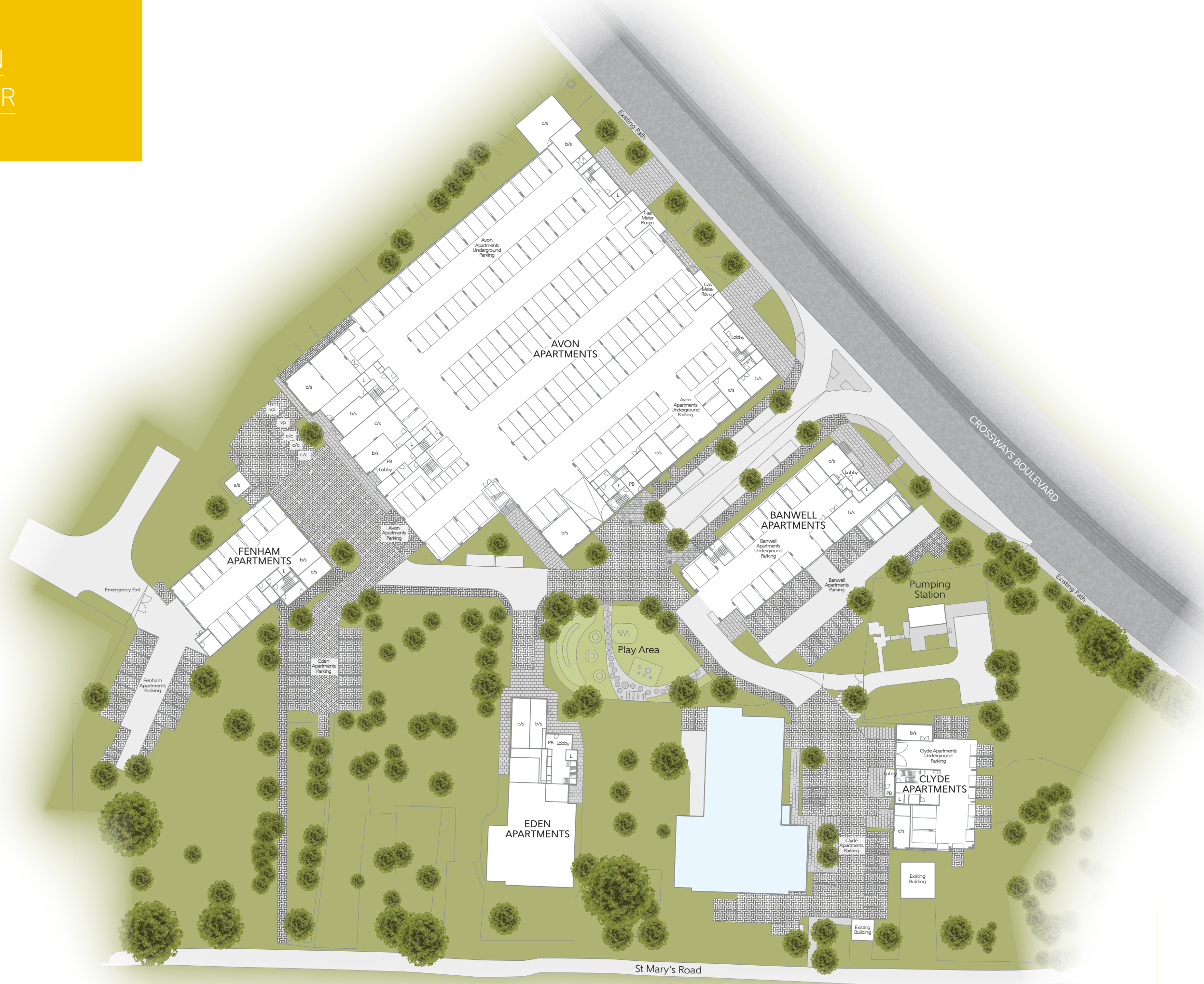


First to Fourth Floors

#### KEY

- 1 Bedroom Apartment
- 2 Bedroom Apartment
- W Fitted Wardrobe
- ▶ Indicates where dimensions are taken from

PARKING PLAN  
GROUND FLOOR



Please refer to Sales Advisor for details of your selected plot. External finishes, landscaping and configuration may vary from plot to plot. Please refer to Sales Advisor for further details. All dimensions are approximate and should not be used for carpet sizes, appliance spaces or furniture. Furniture not to scale and all positions are indicative. Kitchen layouts are subject to change. We operate a policy of continuous improvement and individual features such as kitchen and bathroom layouts, doors, windows, garages and elevational treatments may vary from time to time. Consequently these particulars should be treated as general guidance only and do not constitute a contract, part of a contract or a warranty. Key to plan: c/c Car Club, vp Visitor Parking, L Lift, PB Post Boxes.

# A REPUTATION BUILT ON SOLID FOUNDATIONS

BELLWAY LONDON HAS BEEN BUILDING EXCEPTIONAL QUALITY NEW HOMES THROUGHOUT THE UK FOR OVER 75 YEARS, CREATING OUTSTANDING PROPERTIES IN DESIRABLE LOCATIONS

Bellway London has earned a strong reputation for high standards of design, build quality and customer service. From the location of the site, to the design of the home, to the materials selected, we ensure that our impeccable attention to detail is at the forefront of our build process.

We create developments which foster strong communities and integrate seamlessly with the local area. Each year, Bellway London commits to supporting education initiatives, providing transport and highways improvements, healthcare facilities and preserving - as well as creating - open spaces for everyone to enjoy.

Our high standards are reflected in our dedication to customer service and we believe that the process of buying and owning a Bellway London home is a pleasurable and straightforward one. Having the knowledge, support and advice from a committed Bellway London team member will ensure your home-buying experience is seamless and rewarding, at every step of the way.

Bellway London abides by the New Homes Quality Code, an independent industry code established to champion quality new homes and deliver better outcomes for consumers.



## OUR PASSION FOR GREAT CUSTOMER CARE

FROM THE FIRST DAY YOU VISIT ONE OF OUR SALES CENTRES TO THE DAY YOU MOVE IN, WE AIM TO PROVIDE A LEVEL OF SERVICE AND AFTER-SALES CARE THAT IS SECOND TO NONE

Each home is quality checked by our site managers and sales advisors, after which we invite our customers to a pre-occupation visit. These personalised visits provide a valuable opportunity for homeowners to understand the various running aspects of their new home. On the move-in day our site and sales personnel will be there to ensure that the move-in is achieved as smoothly as possible.

Providing high levels of customer care and building quality homes is our main priority. However, we are aware that errors do sometimes occur and where this happens, it has always been our intention

to minimise inconvenience and resolve any outstanding issues at the earliest opportunity. In managing this process we have after sales support that is specifically tasked to respond to all customer enquiries. We have a 24 hour emergency helpline and provide a comprehensive information pack that details the working aspects of a new home. A 10 year NHBC warranty provides further peace of mind.

We are confident that our approach to building and selling new homes coupled with our Customer Care programme will provide you with many years of enjoyment in your new home.

Bellway | London

# OUR PORTFOLIO

BELLWAY LONDON HAS BEEN DELIVERING HOMES OF UNRIVALLED QUALITY IN LONDON FOR OVER 75 YEARS. WE HAVE BUILT COMMUNITIES, SHAPED SKYLINES AND CONTRIBUTED TO INFRASTRUCTURE UPGRADES TO HELP BUILD A GREATER LONDON



Photograph of Explorers Wharf, Limehouse.

## COMPLETED DEVELOPMENTS

### THE RESIDENCE

NINE ELMS



Photograph of The Residence.

- 1, 2 and 3 bedroom apartments & penthouses
- Podium gardens
- 24 hour concierge
- Private residents' gym
- Meeting suite
- Media room
- Secure car parking
- Opposite the new US Embassy
- Walking distance to new Nine Elms Zone 1 station
- Completed in 2020

### LEGACY WHARF

STRATFORD



Photograph of Legacy Wharf.

- 1, 2 and 3 bedroom apartments
- Concierge
- Fitness centre
- Communal gardens and play areas
- Part of the regeneration of Stratford
- Walking distance of Pudding Mill Lane DLR
- First phase completed in 2019

### EXPLORERS WHARF

LIMEHOUSE



Photograph of Explorer's Wharf.

- 1, 2 and 3 bedroom waterside apartments
- Residents' gym
- Concierge
- Landscaped podium and roof gardens
- Walking distance to Westferry DLR
- Completed in 2020

### DOCKSIDE

TURNBERRY QUAY



Photograph of Dockside.

- 1, 2 and 3 bedroom apartments with panoramic views of Canary Wharf
- Concierge
- Parking
- Commercial space
- Walking distance to Crossharbour DLR
- Completed in 2018

# BUILDING COMMUNITIES

Our contribution extends beyond building new HBF-awarded five star homes. We are proud to support local community projects and invest in facilities and infrastructure. This includes improvements towards transport connections, green open spaces and leisure facilities, funding towards education and providing affordable new homes. In turn, this also helps to create new jobs for local people and help boost the local economy.



## OLD ISLEWORTH OVER £1.1 MILLION

including  
£319k towards local infrastructure  
£318k towards local employment

## NINE ELMS OVER £29 MILLION

including  
£10 million towards affordable housing  
£109k towards local employment

## CROYDON OVER £1 MILLION

including  
£242k towards carbon offset  
£239k towards local employment and training

## SYDENHAM OVER £1.5 MILLION

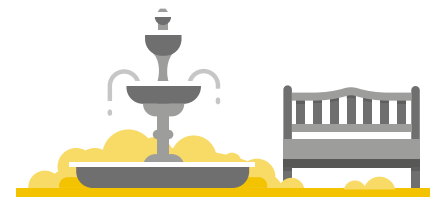
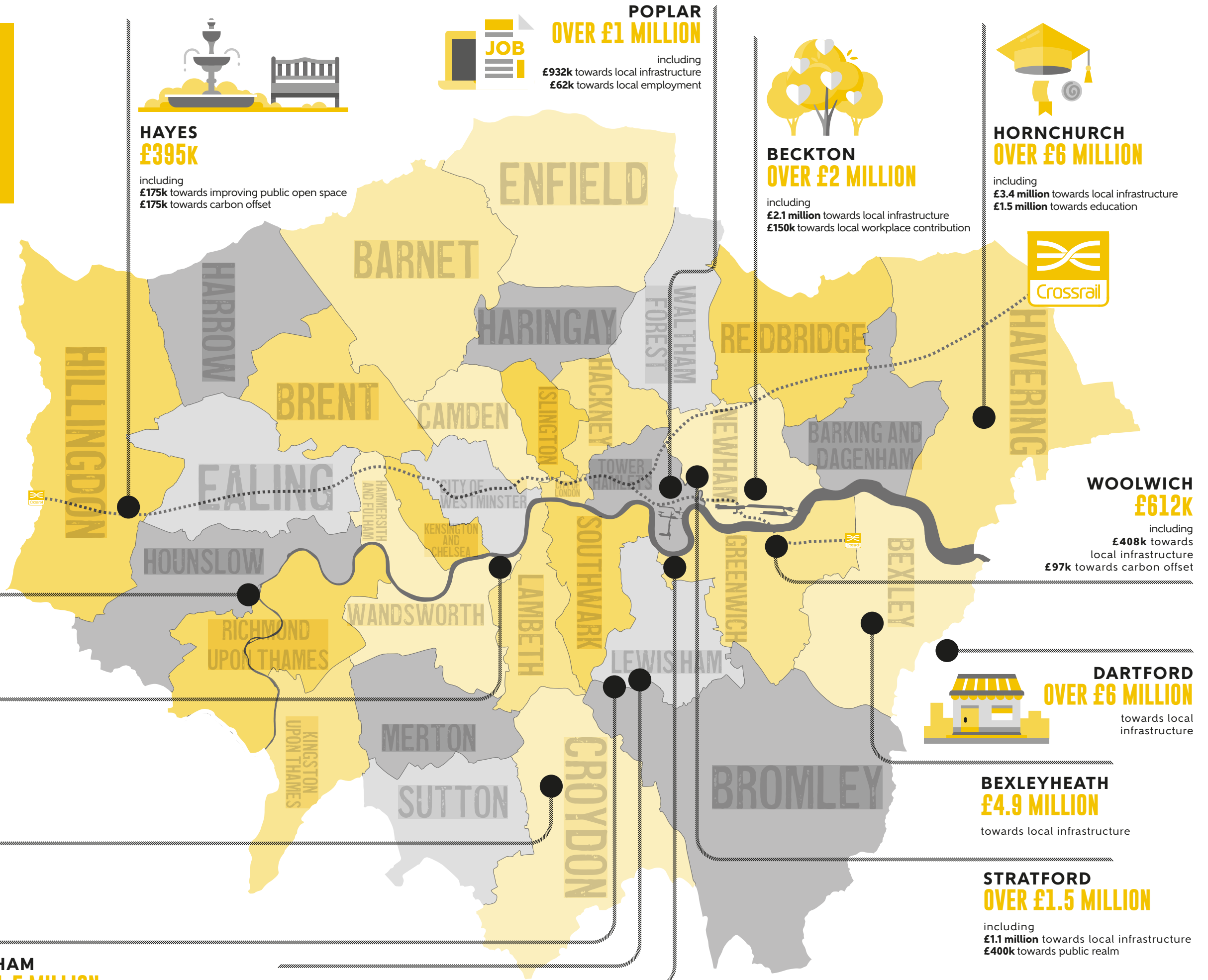
including  
£591k towards local infrastructure  
£532k towards employment

## FOREST HILL £624K

including  
£253k towards local infrastructure  
£167k towards Crossrail

## GREENWICH OVER £2.5 MILLION

including  
£1.5 million towards education and community projects



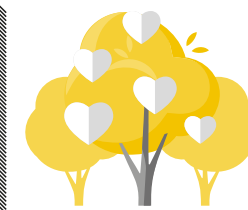
## HAYES £395K

including  
£175k towards improving public open space  
£175k towards carbon offset



## POPLAR OVER £1 MILLION

including  
£932k towards local infrastructure  
£62k towards local employment



## BECKTON OVER £2 MILLION

including  
£2.1 million towards local infrastructure  
£150k towards local workplace contribution



## HORNCHURCH OVER £6 MILLION

including  
£3.4 million towards local infrastructure  
£1.5 million towards education



## WOOLWICH £612K

including  
£408k towards local infrastructure  
£97k towards carbon offset



## DARTFORD OVER £6 MILLION

towards local infrastructure

## BEXLEYHEATH £4.9 MILLION

towards local infrastructure

## STRATFORD OVER £1.5 MILLION

including  
£1.1 million towards local infrastructure  
£400k towards public realm

# TOTAL CONTRIBUTIONS £58,847,989



Beckton Parkside Show Apartment.

## SHARMIN & GERGO

SHARMIN AND GERGO RECENTLY FOUND THEIR DREAM TWO-BEDROOM APARTMENT AT BELLWAY LONDON'S NEARBY BECKTON PARKSIDE DEVELOPMENT.



"It was only when we looked around Beckton Parkside that we were sure of what we wanted – it ticked all the boxes. There was also something about owning a new-build home that was really attractive to us," says Sharmin.

"We are really looking forward to the summer when the weather gets a bit better, so we can take full advantage of the garden and meet more of our neighbours."

Describing how their lives have changed since moving in, Sharmin said: "I think the main thing is how happy we are. Having our own space was a really big thing for us and we feel much more content now that we have achieved it.

"The customer service we received was amazing. I have already recommended Bellway to my friends and family who are also looking to purchase their first property soon."

## AWARDED HIGHEST RATING BY HBF

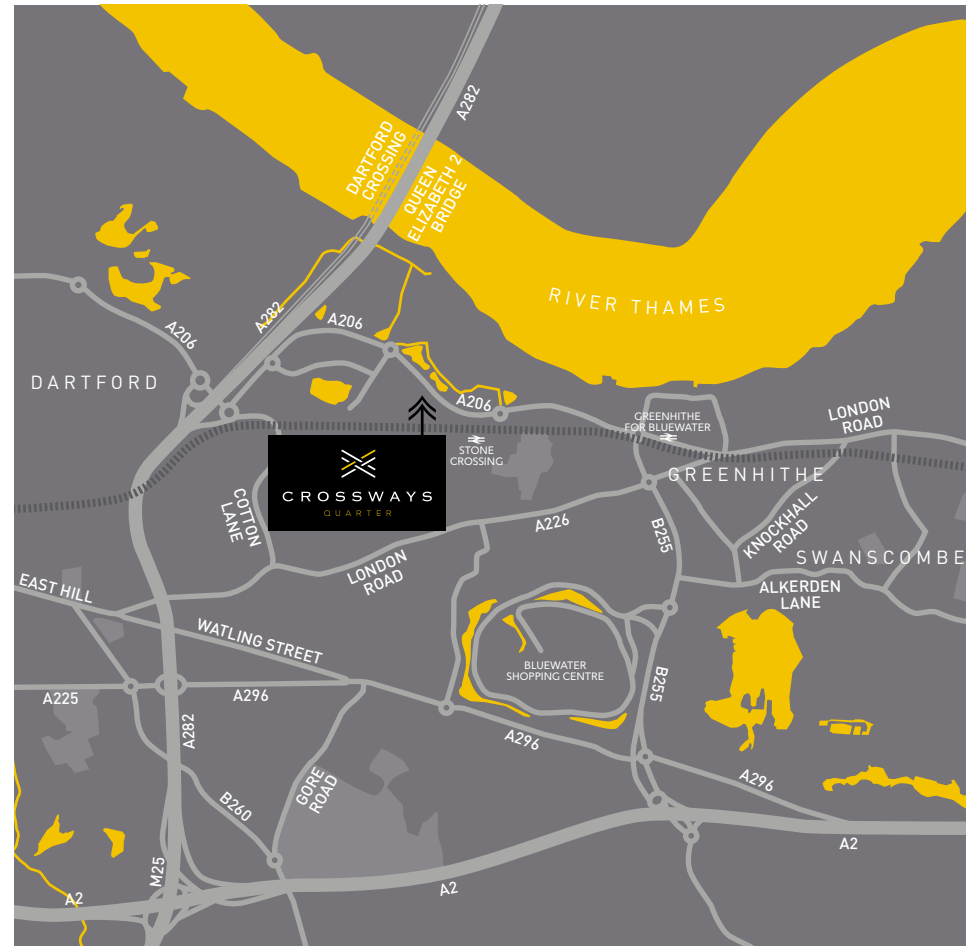
9/10 WOULD RECOMMEND US TO A FRIEND

Bellway London has been awarded five-star status by the Home Builders Federation (HBF), confirming the developer's place among the country's elite house-builders. More than nine out of ten customers said they would recommend Bellway London to a friend.

The award is the highest accolade a new homes developer can receive. HBF ratings are based on feedback from customers in the weeks after they move into their new home. Only a small handful of housebuilders achieved five-star status this year.



OFF ST MARY'S ROAD, GREENHITHE, KENT DA9 9AS



**Bellway** | London

Bellway Homes Limited (Thames Gateway Division), Bellway House,  
Anchor Boulevard, Crossways Business Park, Dartford, Kent DA2 6QH

Telephone: 0203 784 8395 | [www.bellwaylondon.co.uk](http://www.bellwaylondon.co.uk) | [@bellwaylondon](https://www.instagram.com/bellwaylondon) | [bellwaylondon](https://www.facebook.com/bellwaylondon)

Please note that while every effort has been taken to ensure the accuracy of the information provided within this brochure, particulars regarding local amenities and their proximity should be considered as general guidance only. Computer generated images are shown for illustrative purposes only. The identification of schools and other educational establishments is intended to demonstrate the relationship to the development only and does not represent a guarantee of eligibility or admission. Journey times are representative of journeys made by car unless stated otherwise and may vary according to travel conditions and time of day. Sources: Google, The AA, National Rail and Transport for London. The particulars in this brochure are for illustration only. We operate a policy of continuous improvement and individual features such as kitchen and bathroom layouts, doors, windows, garages and elevational treatments may vary from time to time. Consequently, these particulars should be treated as general guidance only and do not constitute a contract, part of a contract or a warranty. All maps are for illustrative purposes only and not to scale. 00059-03/08/22.

