



LEGACY TOWER



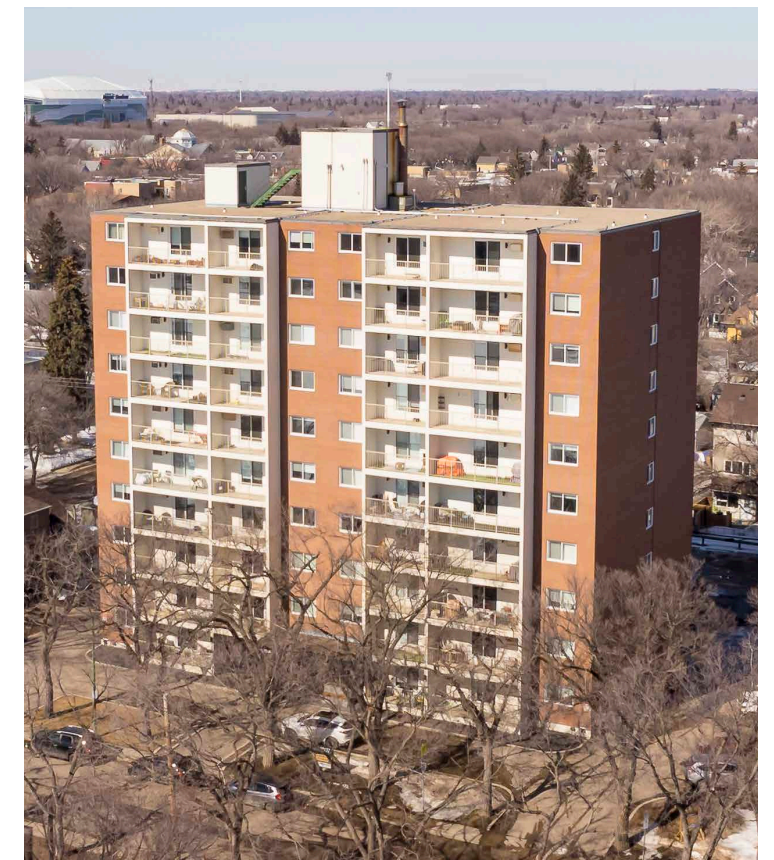
■ ■ ■ A TEN-STOREY HIGH-RISE WITH 78 SUITES IN THE HEART OF REGINA

Introducing Legacy Tower - Located in downtown Regina steps away from the beautiful Wascana Park in the charming Cathedral neighbourhood, blending city convenience with natural beauty



For more detailed information, please execute a Confidentiality Agreement ('CA') and submit the executed CA to the Transaction Advisors.

[Link to
Confidentiality Agreement](#)



OFFERING OVERVIEW

2720 College Avenue, Regina, SK



78 SUITES
9 junior one-bedroom suites
51 one-bedroom suites
18 two-bedroom suites



YEAR BUILT
1969



OVER 60% OF SUITES
are renovated



62 PARKING STALLS
surface stalls



ELEVATORS
two passenger elevators

AMENITIES

- ✓ Fitness Centre
- ✓ Yoga Studio
- ✓ Sauna
- ✓ Lounge / Games Room
- ✓ Laundry Room
- ✓ Storage Lockers
- ✓ Electrified Parking
- ✓ Coffee Bar
- ✓ Bike Storage
- ✓ Free High-Speed WiFi
- ✓ Smart Parcel Lockers
- ✓ 24 Hour Security & Monitoring

INVESTMENT HIGHLIGHTS



REGINA – NOT JUST FOOD, FUEL & FERTILIZER

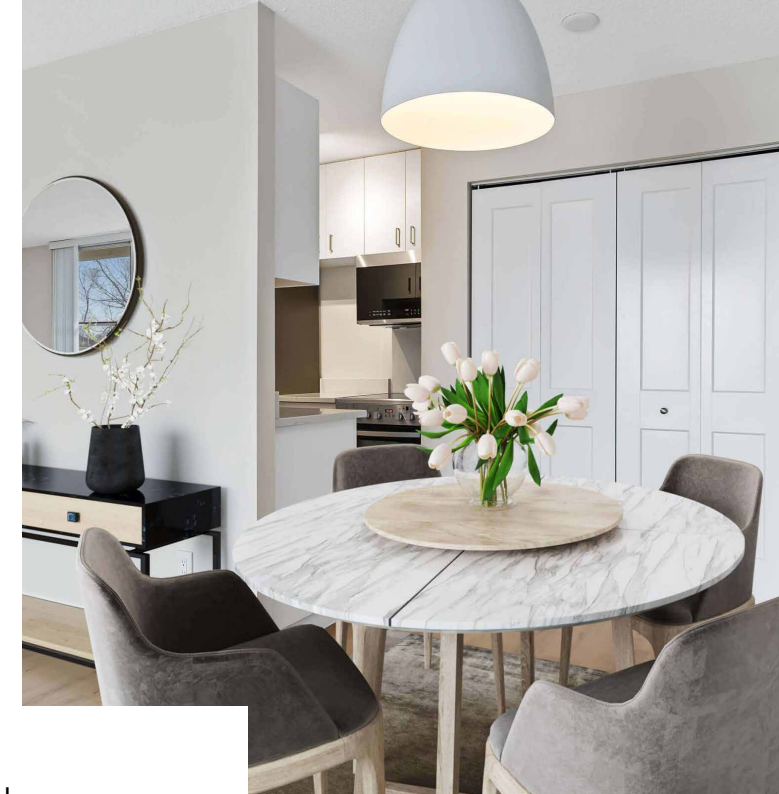
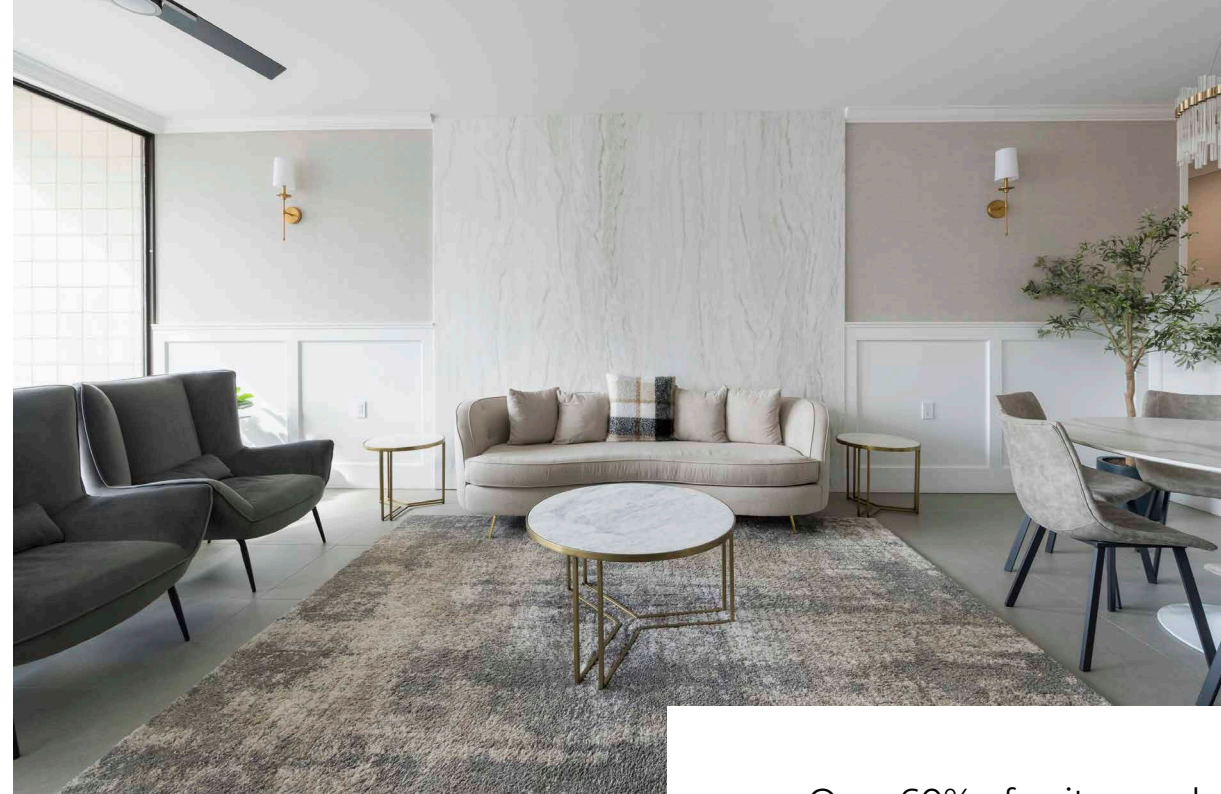
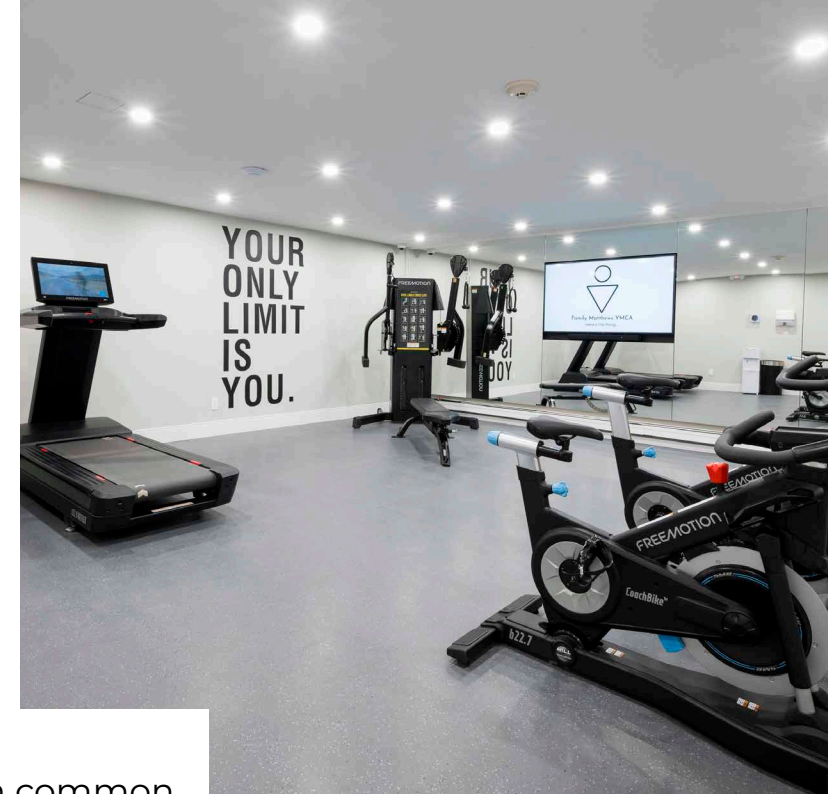


ADVANCED REPOSITIONING STRATEGY IN FULL SWING



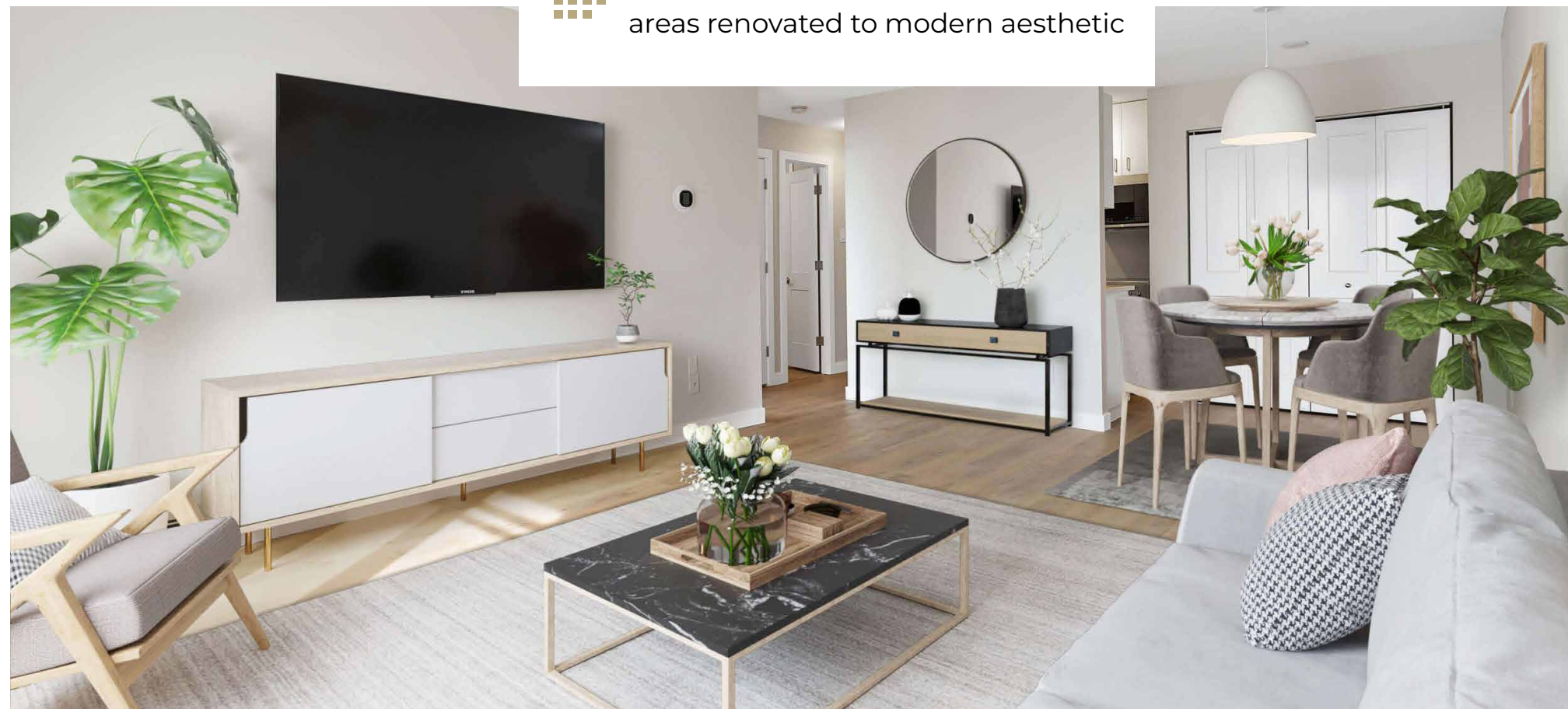
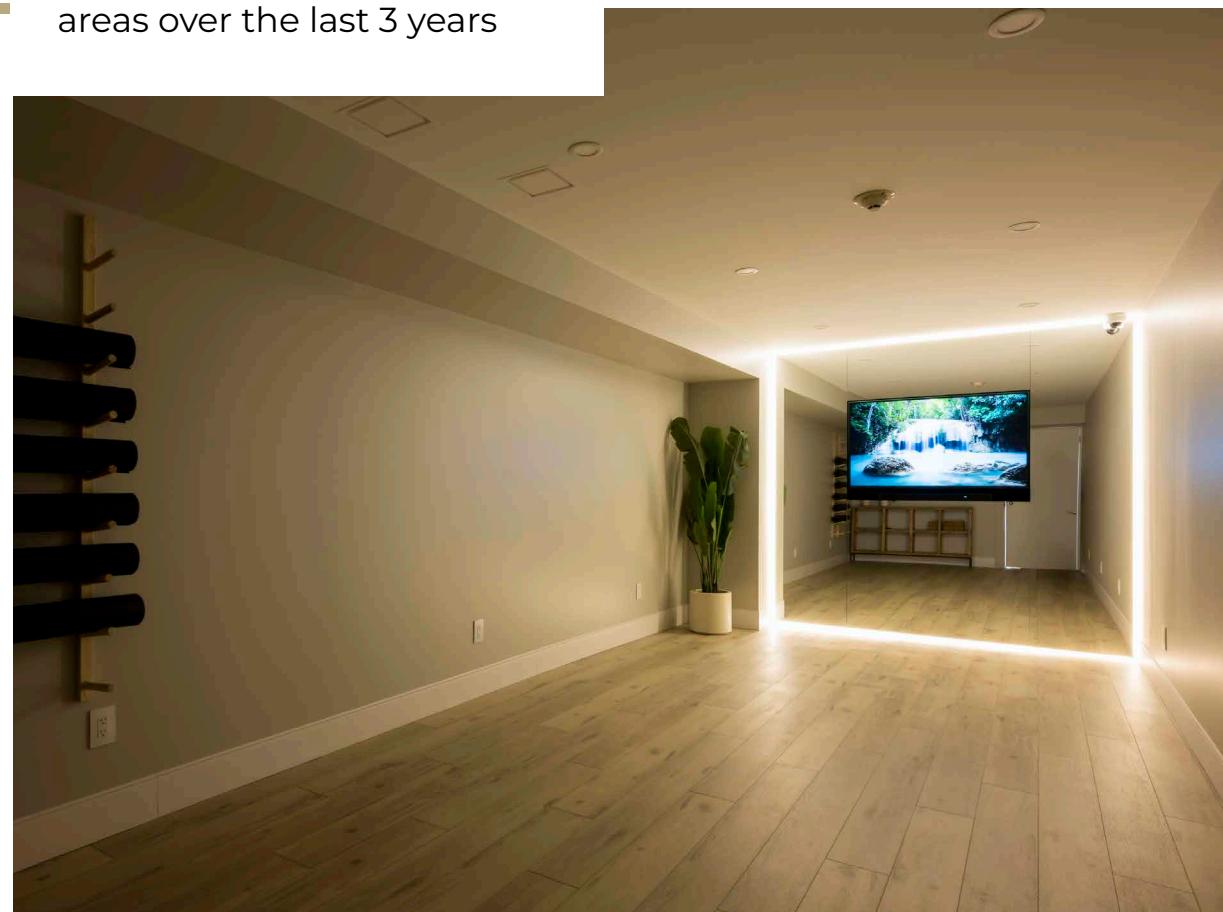
EXCEPTIONAL AMENITY OFFERING





~\$700,000 spent on common areas over the last 3 years

Over 60% of suites and all common areas renovated to modern aesthetic





For more information, please contact:

National

MICHAEL BETSALEL*

Executive Vice President, Team Lead
JLL National Multifamily Team
+1 647 728 0477
michael.betsalel@jll.com

EARL KUFNER*

Executive Vice President
JLL National Multifamily Team
+1 647 728 0463
earl.kufner@jll.com

SAM DEAN*

Executive Vice President
JLL National Multifamily Team
+1 780 328 2560
samuel.dean@jll.com

Prairies

BRYN OLIVER**

Principal
Capital Commercial Real Estate
+1 204 985 1379
bryn.oliver@capitalgrp.ca

TREVOR CLAY***

Principal
Capital Commercial Real Estate
+1 204 985 1365
trevor.clay@capitalgrp.ca

LUKE PAULSEN*

Vice President
Capital Commercial Real Estate
+1 204 943 5700
luke.paulsen@capitalgrp.ca

Disclaimer: © 2025 Jones Lang LaSalle IP, Inc. All rights reserved. The information contained in this document is proprietary to Jones Lang LaSalle, Capital Commercial Real Estate and shall be used solely for the purposes of evaluating this proposal. All such documentation and information remains the property of Jones Lang LaSalle, Capital Commercial and shall be kept confidential. Reproduction of any part of this document is authorized only to the extent necessary for its evaluation. It is not to be shown to any third party without the prior written authorization of Jones Lang LaSalle, Capital Commercial. All information contained herein is from sources deemed reliable; however, no representation or warranty is made as to the accuracy thereof.

*Sales Representative / **Services provided by Bryn Oliver Personal Real Estate Corporation / ***Services provided by Trevor Clay Personal Real Estate Corporation