

# INTRODUCING 15,000 SF OF BRAND NEW AMENITY SPACE



[www.2020Koffices.com](http://www.2020Koffices.com)



# 2020K

BRAND NEW  
**AMENITY FLOOR**



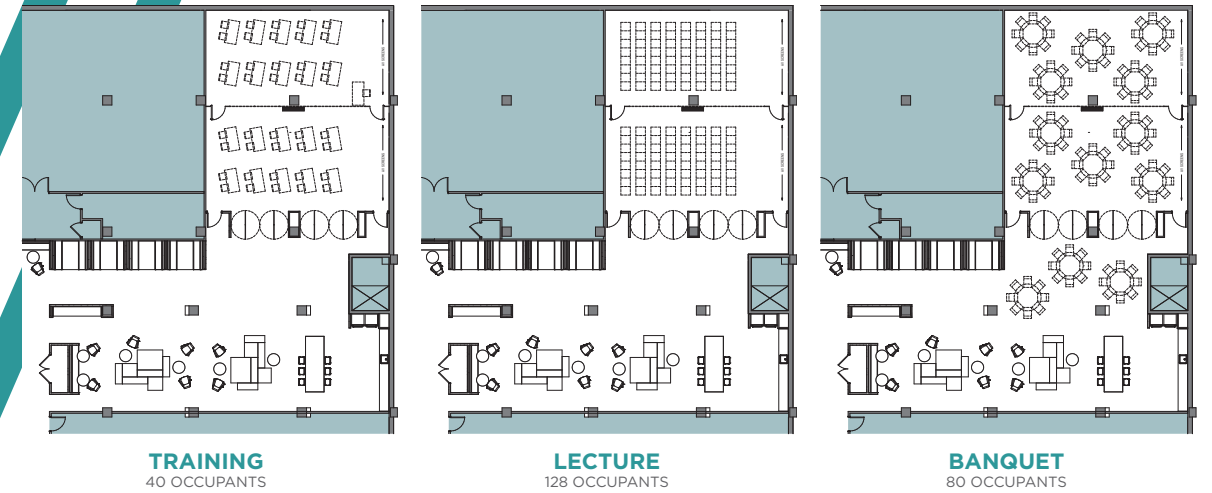


11 FOOT  
CEILING  
HEIGHTS

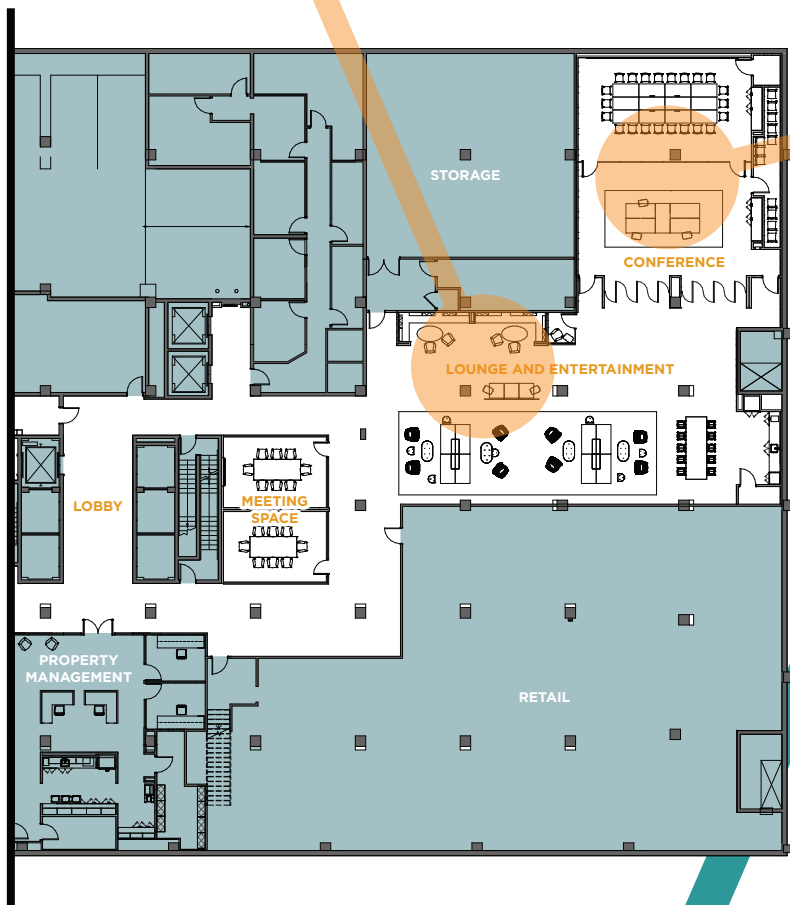
# BRAND NEW ENTERTAINMENT SPACE



Lounge & Entertainment Area



Conferencing



SEATS UP TO  
**128**  
PEOPLE

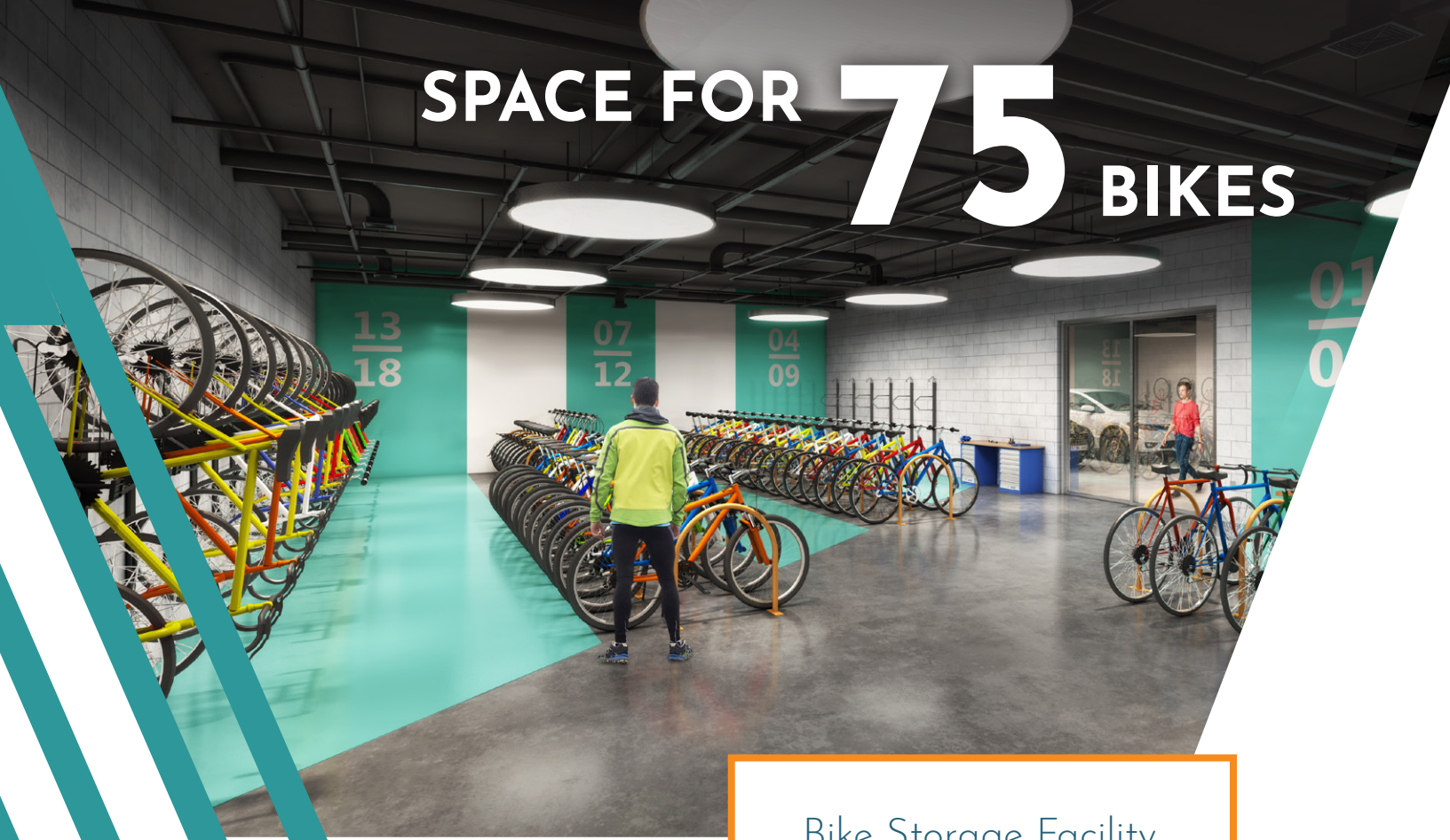


BRAND NEW  
**FITNESS CENTER**

SPACE FOR **75** BIKES



Huge Fitness Center

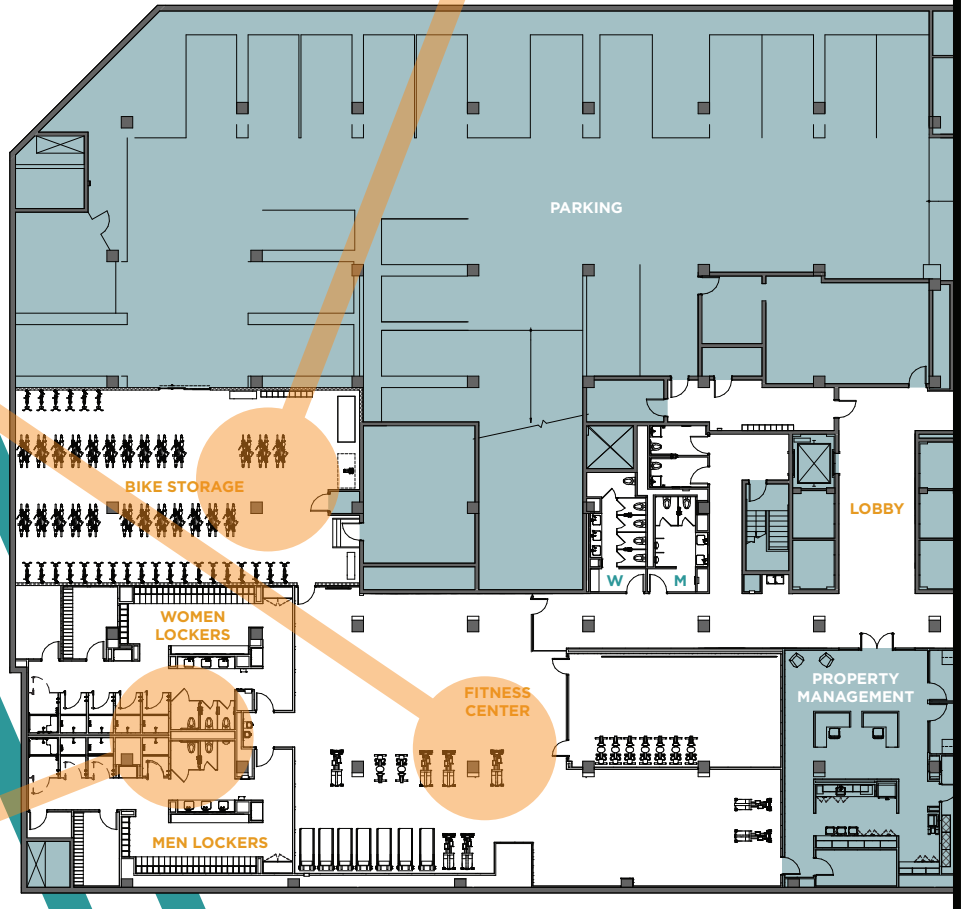


Bike Storage Facility



**11** FOOT  
CEILING  
HEIGHTS

Spa Quality Locker Rooms





# 2020K

[www.2020Koffices.com](http://www.2020Koffices.com)

## FOR LEASING INFORMATION

**DOUG MUELLER**

202 719 5594  
[doug.mueller@am.jll.com](mailto:doug.mueller@am.jll.com)

**EVAN BEHR**

202 719 5642  
[evan.behr@am.jll.com](mailto:evan.behr@am.jll.com)

**NATHAN BEACH**

202 719 5680  
[nathan.beach@am.jll.com](mailto:nathan.beach@am.jll.com)

**KRISTEN MATHIS**

202 719 5623  
[kristen.mathis@am.jll.com](mailto:kristen.mathis@am.jll.com)

**THOMAS MYERS**

202 719 5582  
[thomas.myers@am.jll.com](mailto:thomas.myers@am.jll.com)

**MAC HALL**

202 719 5019  
[mac.hall@am.jll.com](mailto:mac.hall@am.jll.com)

