

Great Eastern Tower, London E15

Guide price £475,000 Leasehold







Description

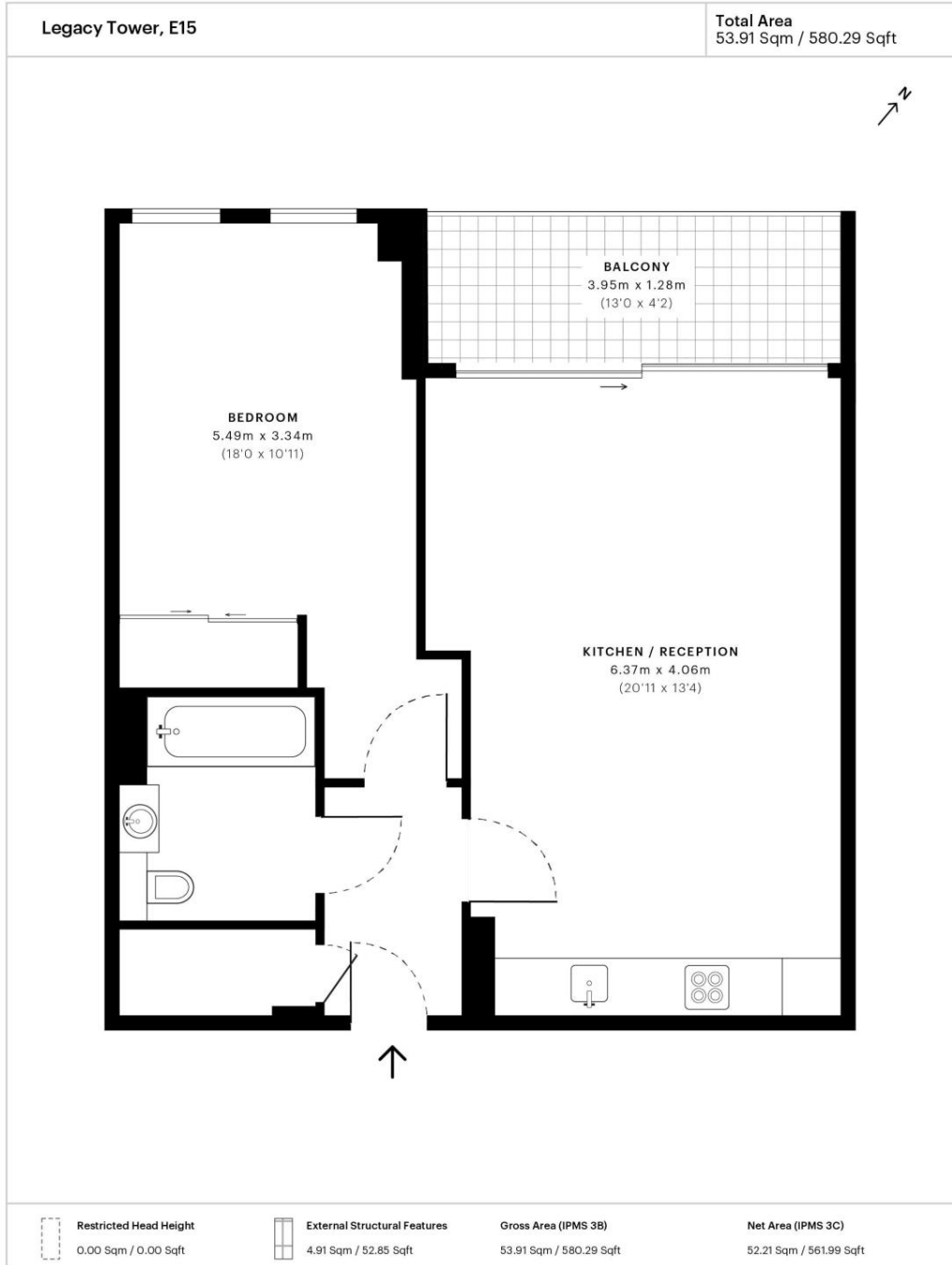
This superb one bedroom apartment is located in one of Stratford's most sought after developments, Legacy Tower E15. Situated on the 22nd floor, this spacious apartment benefits from being finished to the highest of standards with uncompromised views stretching as far as the eye can see. located in one of London's most connected areas with direct transport links servicing The City, Canary Wharf and the West End are readily accessible.

Legacy Tower is a striking 31-storey tower which will offer dual aspect views of both the Queen Elizabeth Olympic Park and Westfield's Stratford City. Residents will benefit from access to a 24 hour concierge service and a private residents gymnasium.

- - 1 Bedroom
- - 1 Bathroom
- - 24 Hour Concierge
- - Balcony
- - Residential Gym
- - 0.1 mile from Stratford Underground Station
- - EPC: B

Floorplan

580 sq ft | 54 sq m



Spec floor plan captured for JLL, Stratford on 08/11/2018 using **19,534,936** laser scan points, accurate to +/- 3cm. Produced in accordance with Royal Institution of Chartered Surveyors Property Measurement Standards, incorporating International Property Measurement Standard (IPMS). If you intend to rely on any measurement in a transaction you should perform your own checks. Plot/Gardens illustrative only and excluded from all area calculations. SpecID: 5be2d185d45a61118b89073e

Restricted Head Height = Limited use area under 1.5m. **External Structural Features** = Balconies, terraces or verandas or similar. **IPMS 3B** = gross internal area measured from the internal faces of external walls, including walls/obstructions and External Structural Features, excluding stairwell area above/below the ground floor. **IPMS 3C** = net area of IPMS 3B excluding internal walls/obstructions and stairwell area above/below the ground floor. **Total Area** = IPMS 3B gross area + stairwell area above/below ground floor of 0.00 Sqm / 0.00 Sqft.



Stratford
5 Station Street,
London E15 1DA
+4420 3147 1500
stratford@eu.jll.com

Urban living, your way.

jll.co.uk/residential

© 2019 Jones Lang LaSalle IP, Inc. All rights reserved. All information contained herein is from sources deemed reliable; however, no representation or warranty is made to the accuracy thereof.

