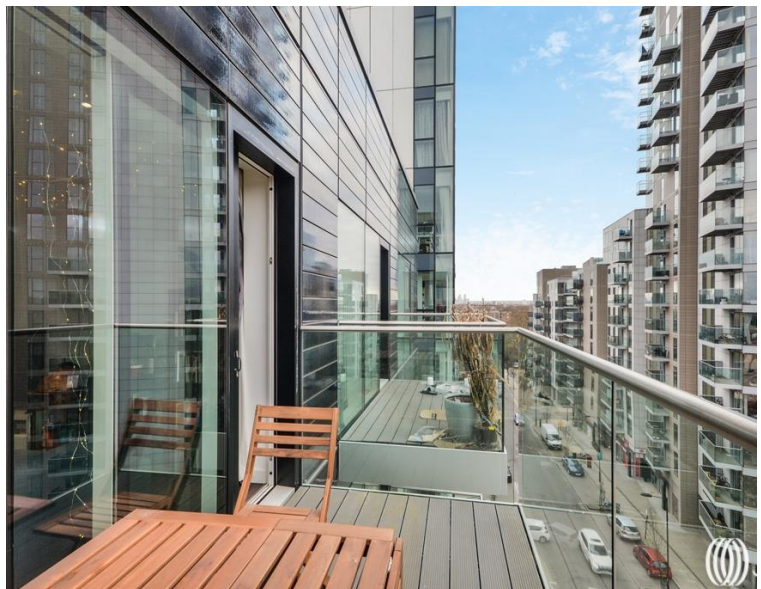




Devan Grove, London N4

Guide price £900,000 Leasehold







Description

6th floor, spacious three bedroom three bathroom apartment in the very popular waterside development Skyline Apartments with 24 hour concierge service, resident's gym, swimming pool and spa facility.

Offering high ceilings, under-floor heating throughout, high specification integrated kitchen and bathrooms, three double bedrooms (en-suite to two bedrooms) and large living/dining area leading generously sized private balcony. There is also a large corner balcony from the master bedroom.

This property has the benefit of a parking space in the secure underground carpark.

Woodberry Down is on the banks of the West and East Reservoirs overlooking more than 42 acres of open water. Stoke Newington and Finsbury Park are both within a mile and offer a large choice of bars and restaurants. For transport Manor House tube station is very close and Finsbury Park is also close for further tube and train options

EPC: B

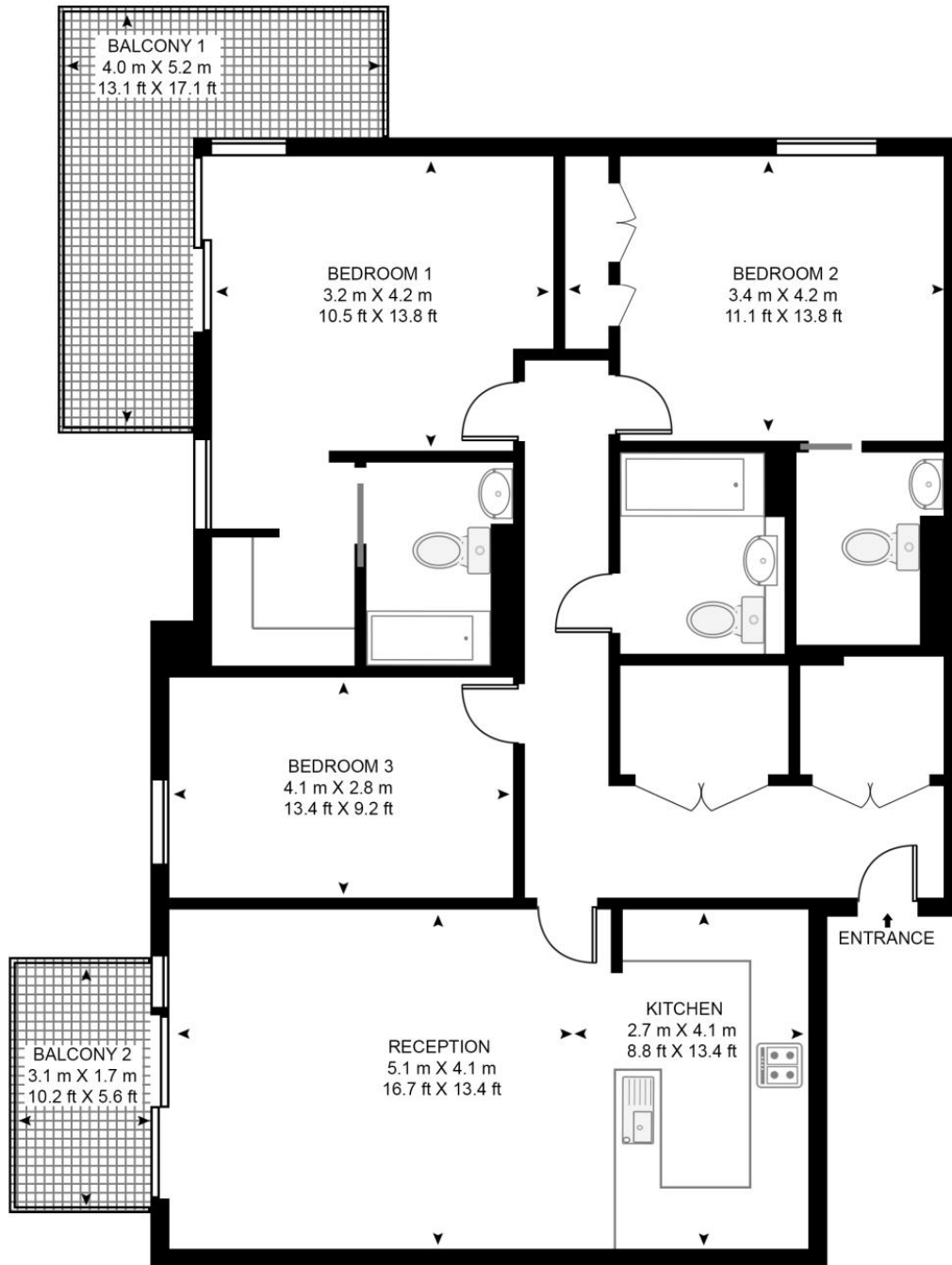
- 3 Bedrooms
- 3 Bathrooms
- Private balcony
- 24 Hour concierge service
- Close to public transport
- Underground car parking
- Approx: 1195 sq ft (111 sq m)
- Leasehold
- EPC: B

Floorplan

1,195 sq ft | 111 sq m

SKYLINE APARTMENTS

APPROXIMATE GROSS INTERNAL FLOOR AREA 1195 SQ.FT (111 SQ.M)



This floor plan has been defined by the RICS Code of Measurement. This floor plan and all others are for approximate representative purposes only and upon usage is agreed to as such by the client.

WWW: hdvirtualart.com | TEL: 0203.974.1567 | EMAIL: info@hdvirtualart.com

Finsbury Park
Woodberry Park,
London N4 2BL
020 7870 6667
finsburypark@eu.jll.com

Urban living, your way.

jll.co.uk/residential

© 2019 Jones Lang LaSalle IP, Inc. All rights reserved. All information contained herein is from sources deemed reliable; however, no representation or warranty is made to the accuracy thereof.

