



Oakley Gardens

CHELSEA SW3



Oakley Gardens

A charming family house situated in one of the most scenic and tranquil locations in the area. Houses in this delightful U-shaped terrace of part stucco fronted buildings rarely become available.

Oakley Gardens is accessed via Chelsea Manor Street and lies just to the south of the King's Road and near the river.

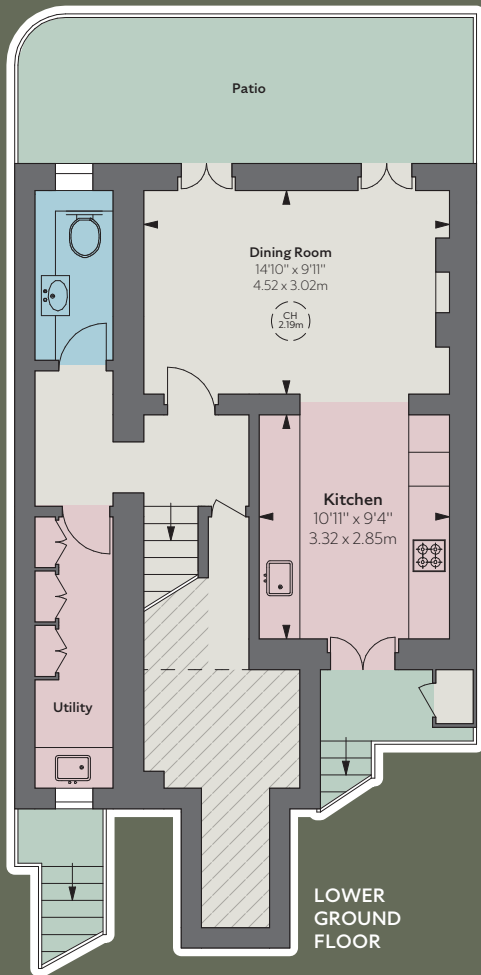
- 3 Bedrooms
- 2 Bathrooms
- 2 Cloakrooms
- Drawing room
- Dining room
- Study
- Kitchen
- Utility room
- Patio
- Terrace
- EPC: E

Guide Price: £3,250,000

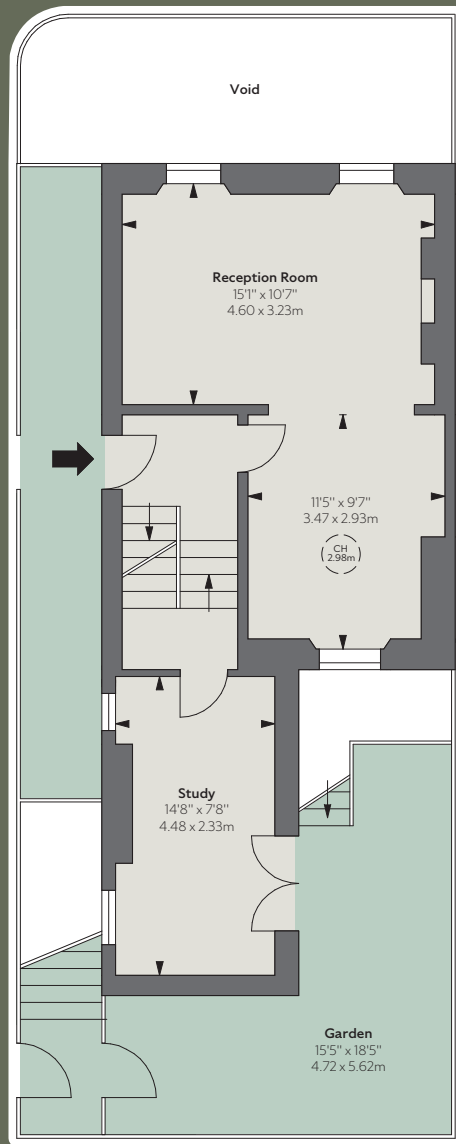
Tenure: Freehold

Local Authority: The Royal Borough of Kensington & Chelsea





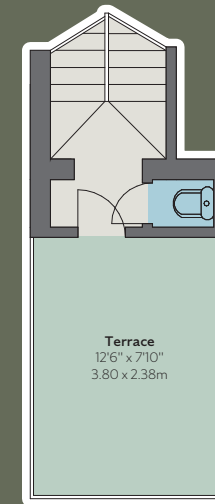
LOWER GROUND FLOOR



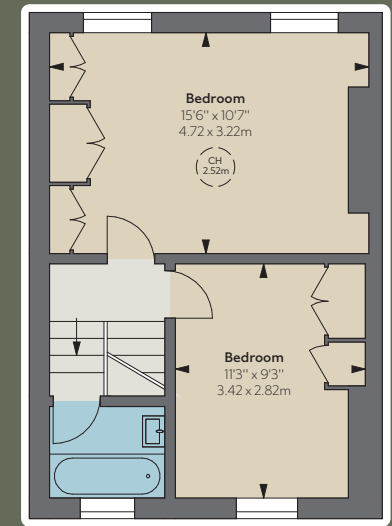
GROUND FLOOR



FIRST FLOOR



FIRST FLOOR HALF LANDING



SECOND FLOOR



Approximate Gross Internal Area
 1,866 sq ft / 173.35 sq m
 including under 1.5m area
 1,778 sq ft / 165.22 sq m
 excluding under 1.5m area

THE BROCHURE
 ALEX
 WINSHIP

These particulars are for general information only and do not constitute any part of an offer or contract. All statements contained therein are made without responsibility on the part of the vendors or lessors and are not to be relied upon as statement or representation of fact. Intending purchasers or lessees must satisfy themselves, by inspection, or otherwise, as to the correctness of each of the statements or dimensions contained in these particulars. This floorplan is for guidance only and not for valuation purposes. 22/04/22 JLL-220413-02GG

Floorplan for guidance only, not to scale or valuations purposes. It must not be relied upon as a statement of fact. All measurements and areas are approximate and have been prepared in accordance with the current edition of the RICS Code of Measuring Practice.

Savills Knightsbridge
 knightsbridge_sales@savills.com
 020 7581 5234

Savills Sloane Street
 sloanestreet@savills.com
 020 7730 0822

savills.co.uk



JLL Knightsbridge
 knightsbridge@eu.jll.com | 020 7306 1600

JLL Chelsea
 chelsea@eu.jll.com | 020 7399 5010

jll.co.uk/residential