



Evelyn Gardens, London SW7

Price £1,450 per week - Furnished





Description

A well presented two bedroom apartment situated on Evelyn Gardens, SW7.

Situated on the second floor (with lift), this stunning two bedroom apartment is offered fully furnished. The apartment comprises two double bedrooms each with large fitted wardrobes, two contemporary bathrooms, spacious reception area with access onto private balcony overlooking the communal gardens, separate fitted kitchen, wood flooring and excellent storage space.

The property is situated just off of Fulham Road and is conveniently located for Gloucester Road station (approx. 0.5 miles) and South Kensington station (approx. 0.6 miles).

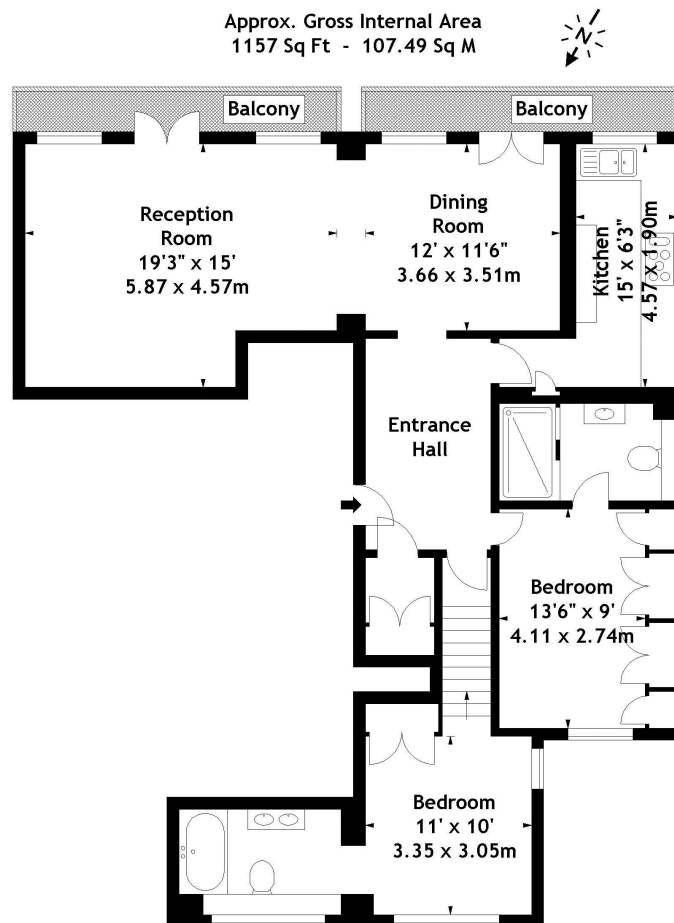
As well as paying the rent, you may also be required to make permitted payments. Please visit jll.co.uk/fees for details of fees which may be payable when renting a property. If your tenancy does not qualify as an AST, additional fees may apply.

- 2 Bedrooms each with fitted wardrobes and ensuite bathroom
- Reception room and dining room
- Separate kitchen
- Wooden flooring
- Private balcony
- Communal gardens
- Lift
- Furnished
- Approx. 1157 sq ft (107 sq m)
- EPC: D



Floorplan

1,157 sq ft | 108 sq m



Second Floor

Measured in accordance with RICS guidelines. Every attempt is made to ensure accuracy, however all measurements are approximate. This floor plan is for illustrative purposes only and is not to scale.

Knightsbridge
174 Brompton Road,
London SW3 1HP
+4420 7306 1600
lettingsknightsbridge@eu.jll.co

Urban living, your way.

jll.co.uk/residential

© 2019 Jones Lang LaSalle IP, Inc. All rights reserved. All information contained herein is from sources deemed reliable; however, no representation or warranty is made to the accuracy thereof.

