

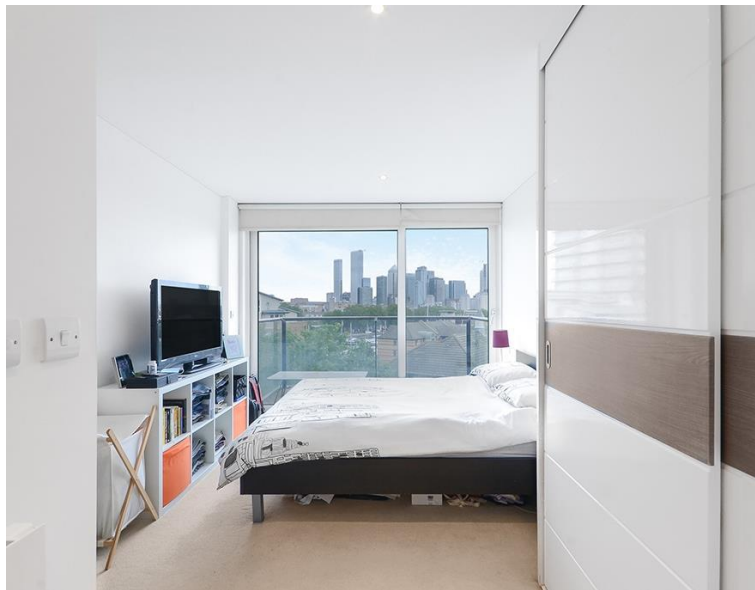


Seafarer Way, London SE16

Guide price £550,000 Leasehold







Description

Two bedroom, two bathroom apartment located on the 5th floor of prestigious Marine Wharf development which offers its residents exclusive access to their own fitness and leisure suite and the benefit of a 24 hr concierge. Excellent connections to Canary Wharf, The City and Central London.

Bathrooms have been designed with meticulous attention to detail and include a Bespoke vanity unit with drawers, inset white wash hand basin and water fall tap. Concealed colour changing lights, mirrored cabinets and heated towel rail. The kitchens at

Marine Wharf have been individually designed to complement the layout of each apartment. Composite stone work tops with matching up stand, combination of gloss wall units and timbre effect finishes to cabinets. Bosch integrated appliances including touch control ceramic hob and multi-function dishwasher.

The property is offered to the market with no onward chain, early viewings are highly recommended.

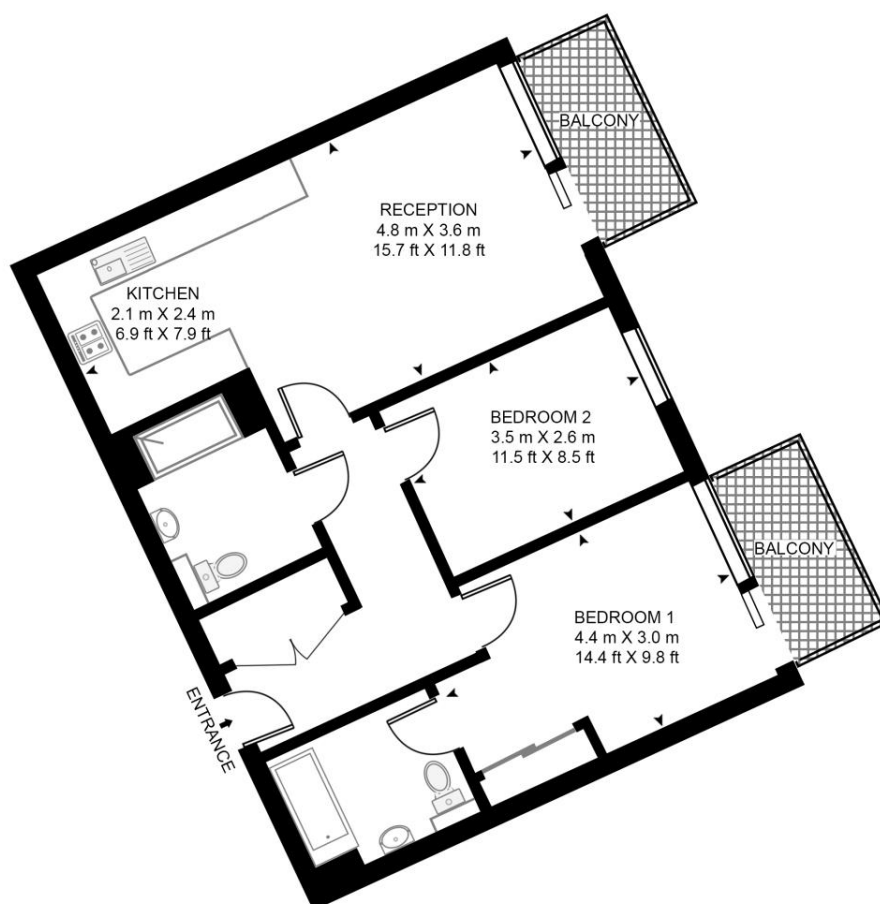
- - 2 Bedroom
- - 2 Bathroom
- - Balcony
- - 5th Floor modern apartment
- - Gym
- - Surrey Quays Overground - 0.5 mile
- - Approx. 718 sq ft (66.2 sq m)
- - EPC: B

Floorplan

712 sq ft | 66 sq m

SIRIUS HOUSE, MARINE WHARF

APPROXIMATE GROSS INTERNAL FLOOR AREA 712 SQ.FT (66.2 SQ.M)



HDVA

This floor plan has been defined by the RICS Code of Measurement. This floor plan and all others are for approximate representative purposes only and upon usage is agreed to as such by the client.

WWW: hdvirtualart.com | TEL: 0203.974.1567 | EMAIL: info@hdvirtualart.com

Greenwich
22 College Approach,
London SE10 9HY
02088589986
lettingsgreenwich@eu.jll.com

Urban living, your way.

jll.co.uk/residential

© 2019 Jones Lang LaSalle IP, Inc. All rights reserved. All information contained herein is from sources deemed reliable; however, no representation or warranty is made to the accuracy thereof.

