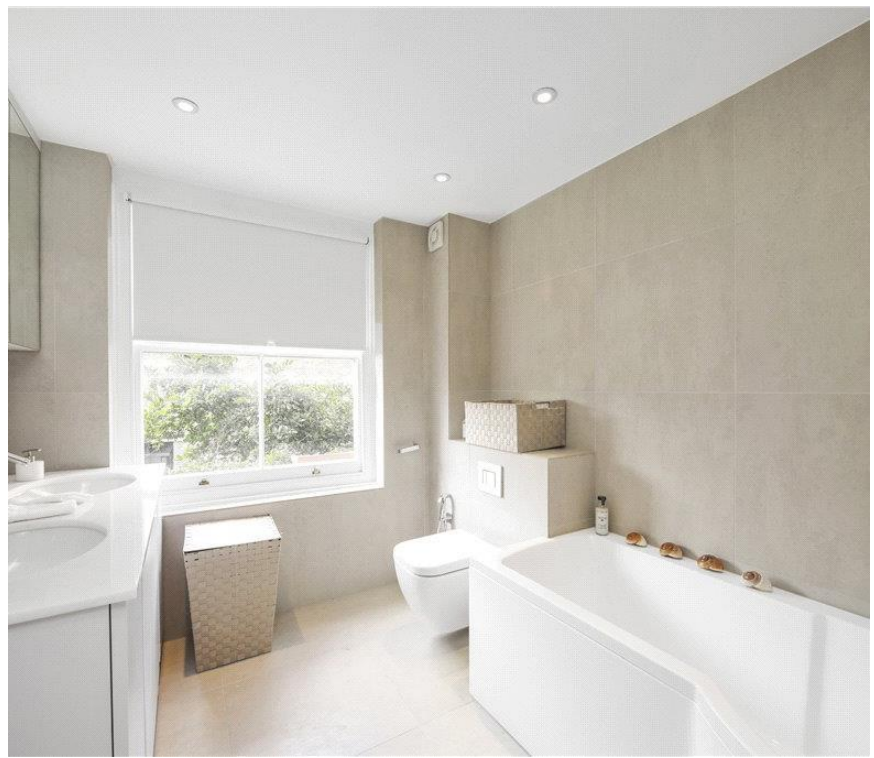




Draycott Place, London SW3

Price £950 per week - Furnished





Description

A stunning first floor split level flat (with lift) in this handsome period building in the heart of Chelsea. The property consists of master bedroom with dressing room and en suite bathroom, second double bedroom with en suite bathroom, guest cloakroom, a large reception room and a fully fitted kitchen. The flat is presented in excellent order and further benefits from high ceilings and elegant furnishings. Draycott Place is close to all the amenities with plenty of shops, bars and restaurants within walking distance.

As well as paying the rent, you may also be required to make permitted payments. Please visit jll.co.uk/fees for details of fees which may be payable when renting a property. If your tenancy does not qualify as an AST, additional fees may apply.

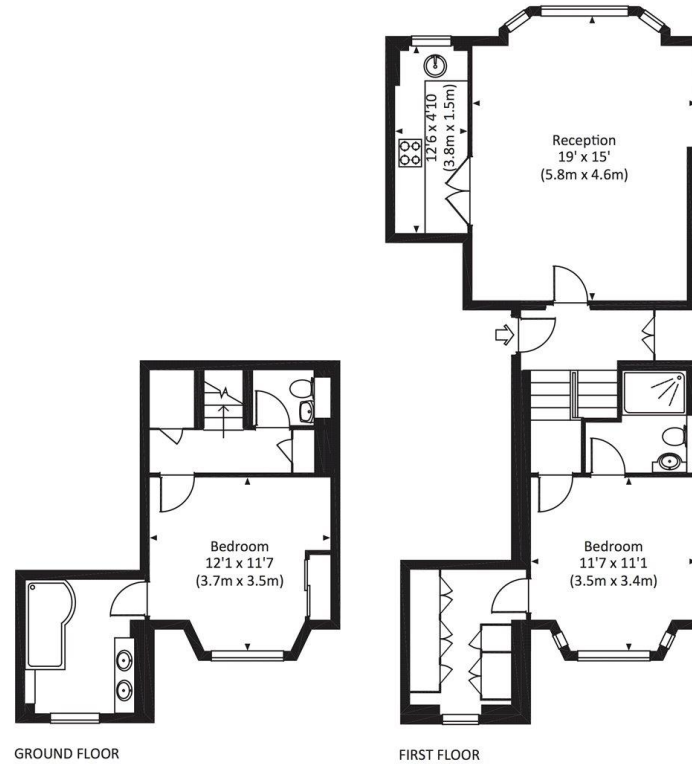
- Two Double bedrooms
- Two Bathrooms (en suite)
- Guest cloakroom
- Reception room
- Fully fitted kitchen
- First floor
- Lift
- Approx. 945 sq ft (87 sq m)
- Furnished
- EPC: D



Floorplan

945 sq ft | 88 sq m

Approx. gross internal area
945 Sq Ft. / 87.8 Sq M.



dpd All measurements have been made in accordance with RICS Code of Measuring Practice which are approximate only and only for illustrative purposes. For the avoidance of doubt, Dowling Jones Design shall not be liable for any reliance on these measurements. © 2017 www.dowlingjones.com 020 7610 9933

Chelsea
2 Cale Street,
London SW3 3QU
+4420 7399 5010
lettingschelsea@eu.jll.com

Urban living, your way.

jll.co.uk/residential

© 2019 Jones Lang LaSalle IP, Inc. All rights reserved. All information contained herein is from sources deemed reliable; however, no representation or warranty is made to the accuracy thereof.

