



Elystan Place, London SW3

Price £850 per week - Furnished





Description

A stylish and spacious apartment situated over two floors in the heart of Chelsea. The property consists of large reception room with access to a large terrace, open plan kitchen with dining area, master bedroom with en suite bathroom, further double bedroom with access to the terrace and a family bathroom. The property is conveniently situated close to the shops, bars and restaurants of Chelsea, as well as Sloane Square underground station.

As well as paying the rent, you may also be required to make permitted payments. Please visit jll.co.uk/fees for details of fees which may be payable when renting a property. If your tenancy does not qualify as an AST, additional fees may apply.

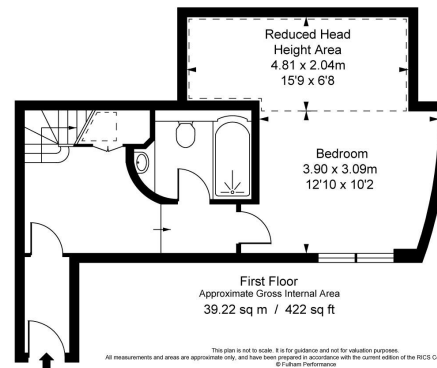
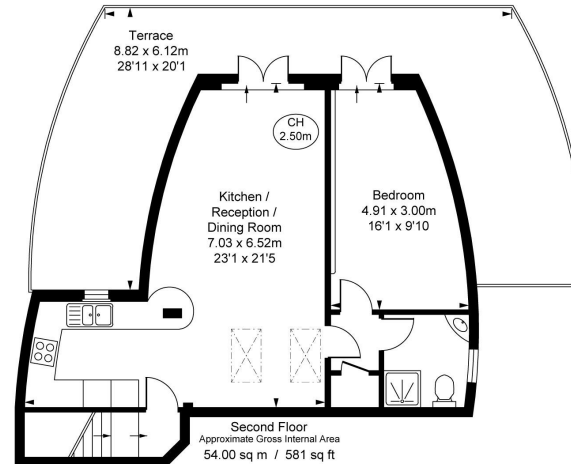
- Reception room
- Open plan kitchen
- Master bedroom with en suite bathroom
- Further bedroom
- Family bathroom
- Terrace
- First floor & second floor
- Approx. 1003 sq ft (93 sq m)
- Furnished
- EPC: C



Floorplan

1,003 sq ft | 93 sq m

Ranelagh House,
Elystan Place SW3
Approximate Gross Internal Area
93.22 sq m / 1,003 sq ft
(Including restricted height
under 1.5m [- - - - -])
(CH = Ceiling Heights)



This plan is not to scale. It is for guidance and not for valuation purposes.
All measurements and areas are approximate only, and have been prepared in accordance with the current edition of the RICS Code of Measuring Practice.
© Fulham Performance

Chelsea
2 Cale Street,
London SW3 3QU
+4420 7399 5010
lettingschelsea@eu.jll.com

Urban living, your way.

jll.co.uk/residential

© 2019 Jones Lang LaSalle IP, Inc. All rights reserved. All information contained herein is from sources deemed reliable; however, no representation or warranty is made to the accuracy thereof.

