



**Southwark Bridge Road, London SE1**

Price £500 per week - Furnished











# Description

A sought after 1 bedroom apartment in Elephant & Castle's latest tower, Two Fifty One (251).

This stunning 1 bedroom apartment is situated in the 13th floor and furnished to an exceptionally high standard. The property boasts approximately 643 sq ft of living space and comprises large reception and open plan kitchen with Siemens appliances, bedroom with separate wardrobe area, contemporary bathroom, and winter garden with breath-taking North / Easterly views of the City skyline.

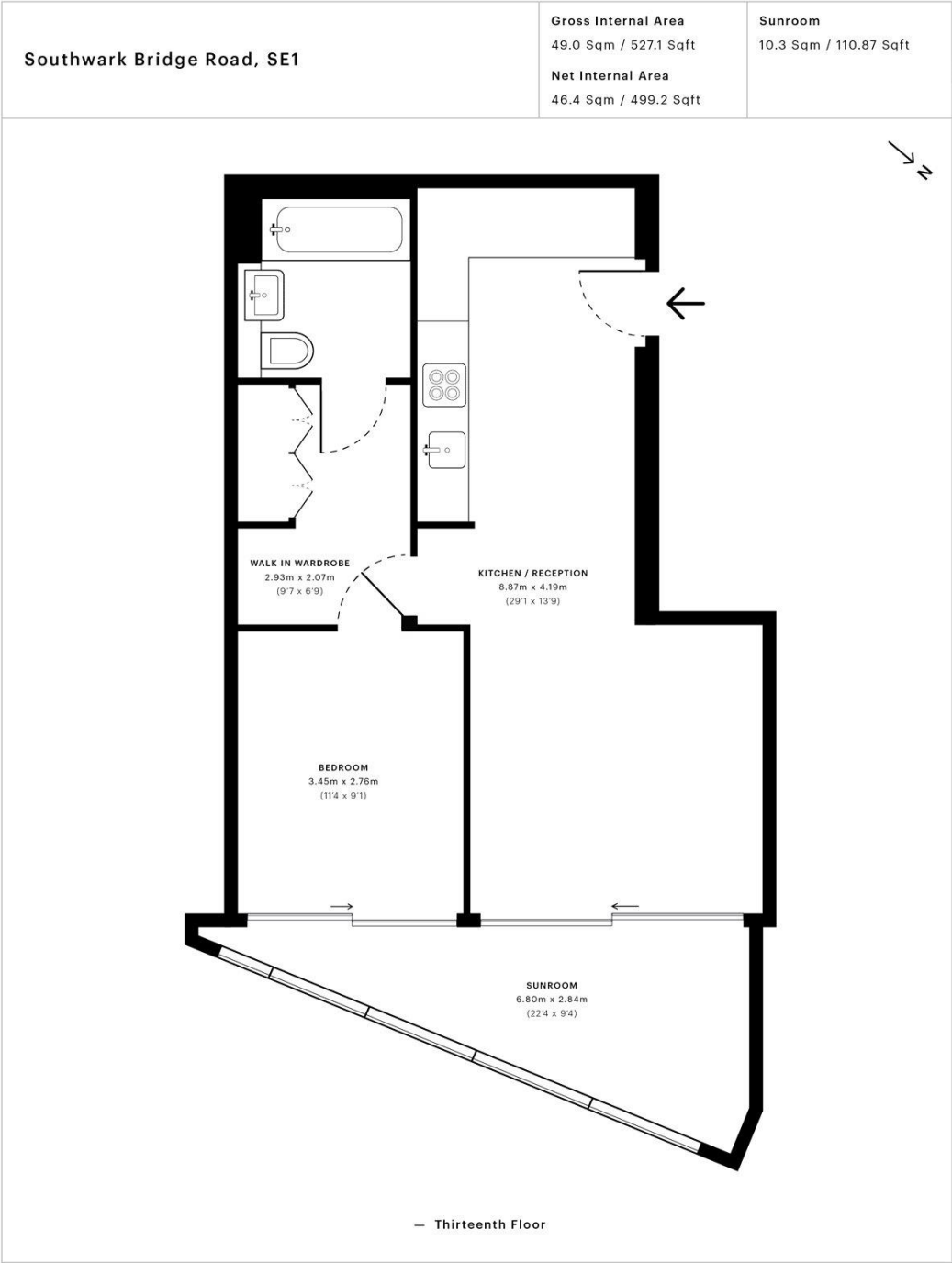
Two Fifty One (251) is located in the heart of Southwark, zone 1 and well situated for the City of London with Elephant & Castle station just 0.1 miles away. Residents also benefit from 24 hour concierge, on site gymnasium, private cinema and private club / dining areas.

As well as paying the rent, you may also be required to make the following permitted payments. If your tenancy does not qualify as an AST, additional fees may apply. Please visit [jll.co.uk/fees](http://jll.co.uk/fees) for details of fees which may be payable when renting a property.

- - 1 Bedroom
- - 1 Bathroom
- - 13th Floor
- - Winter garden with breath-taking views
- - On-site leisure facilities
- - 24 hour concierge
- - 0.1 miles from Elephant & Castle Station
- - Approx. 643 sq ft (59.7 sqm)
- - Furnished
- - EPC: B

# Floorplan

643 sq ft | 60 sq m



This floor plan was captured for JLL, Elephant & Castle on 18/04/2018. Architectural features to scale, derived from millions of laser scan points, accurate to +/- 3cm and produced in accordance with the Royal Institute of Chartered Surveyors Property Measurement standards. Gross Internal Area is measured from the internal faces of external walls and includes internal walls/obstructions. Net Internal Area excludes internal walls/obstructions. Please perform your own checks before relying on these figures in any transaction.



City  
25 Walbrook The Walbrook  
Building,  
London EC4N 8AF  
+4420 7337 4000

*Urban living, your way.*

[jll.co.uk/residential](http://jll.co.uk/residential)

© 2019 Jones Lang LaSalle IP, Inc. All rights reserved. All information contained herein is from sources deemed reliable; however, no representation or warranty is made to the accuracy thereof.

