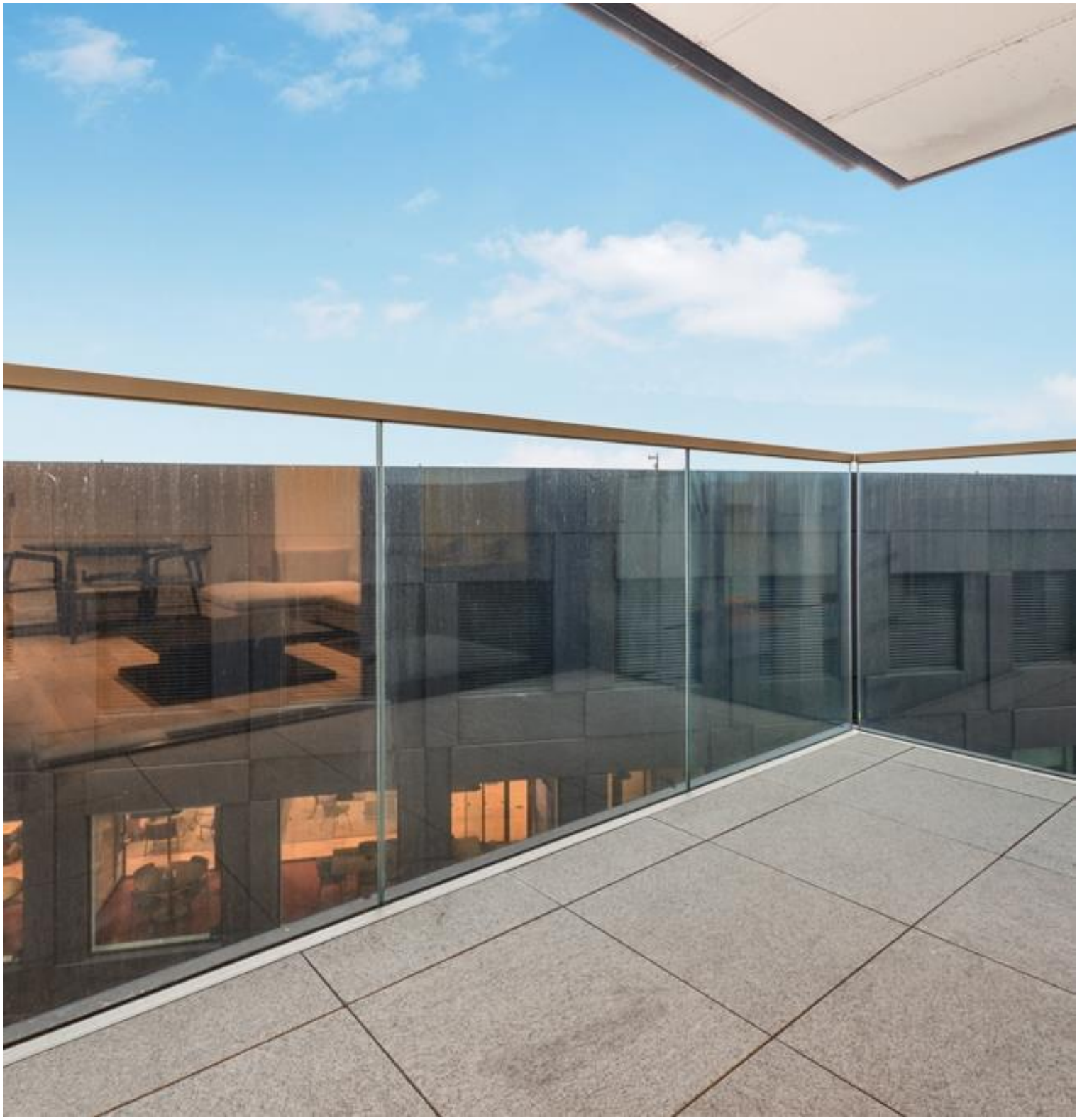




City Road, London EC1V

Price £825 per week - Furnished







Description

A furnished 2 bedroom apartment next to Old Street, EC1 situated on the 13th floor within The Atlas Building.

Situated on the 13th floor and offered on a furnished basis, this contemporary apartment comprises a spacious reception area with fully fitted kitchen, large balcony with views towards the Olympic Park, 2 double bedrooms each with large fitted wardrobes, 2 luxury bathrooms with porcelain finish, wood flooring and comfort cooling / heating.

The Atlas Building is next to Old Street station (0.1 mile) and ideally situated for the City, Hoxton, Shoreditch and Angel. The development offers top of the range amenities which includes pool, spa, gymnasium, private cinema room, resident's only business lounge and 24 hour concierge.

As well as paying the rent, you may also be required to make the following permitted payments. If your tenancy does not qualify as an AST, additional fees may apply. Please visit jll.co.uk/fees for details of fees which may be payable when renting a property.

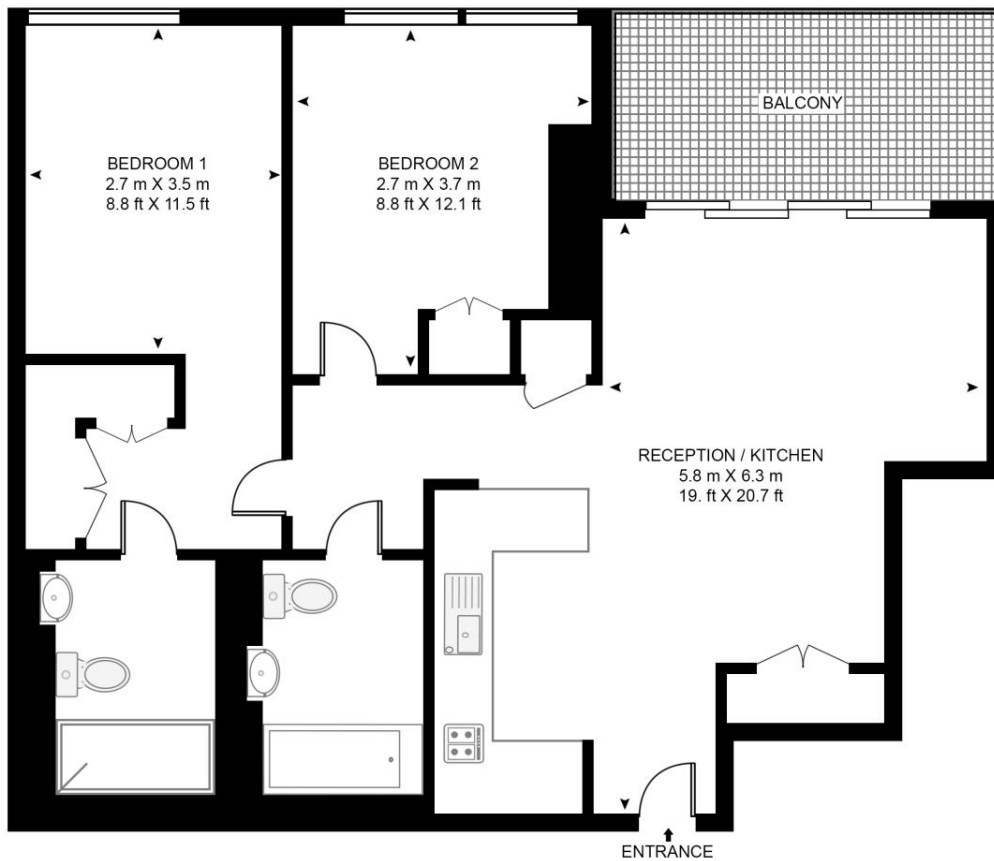
- - 2 Bedrooms
- - 2 Bathrooms
- - 13th floor
- - Private balcony
- - On-site leisure facilities including pool, spa and cinema
- - 24 hour concierge
- - 0.1 miles from Old Street Station
- - Approx. 764 sq ft (71 sq m)
- - Furnished
- - EPC: B

Floorplan

764 sq ft | 71 sq m

ATLAS BUILDING, 145 CITY ROAD

APPROXIMATE GROSS INTERNAL FLOOR AREA 764 SQ.FT (71 SQ.M)



THIRTEENTH FLOOR



This floor plan has been defined by the RICS Code of Measurement. This floor plan and all others are for approximate representative purposes only and upon usage is agreed to as such by the client.

WWW: hdvirtualart.com | TEL: 0203.974.1567 | EMAIL: info@hdvirtualart.com

City
25 Walbrook The Walbrook
Building,
London EC4N 8AF
+4420 7337 4000

Urban living, your way.

jll.co.uk/residential

© 2019 Jones Lang LaSalle IP, Inc. All rights reserved. All information contained herein is from sources deemed reliable; however, no representation or warranty is made to the accuracy thereof.

