

Goldsmiths Row, London E2

Price £650 per week - Furnished







Description

A brand new 2 bedroom apartment in the sought after Mettle & Poise, located in the heart of Shoreditch.

Situated on the 4th floor, this luxury apartment is offered furnished and boasts approximately 784 sq ft of living space. This stunning apartment comprises 2 double bedrooms with fitted wardrobes to master, 2 contemporary bathrooms, reception with open plan fitted kitchen and integrated Siemens appliances, large balcony with stunning views over Hackney City Farm, Amtico flooring and excellent storage space.

The development boasts an excellent location, next to Hackney City farm and Haggerston Park and very close to Broadway Market, Columbia Road Market and London Fields. Mettle and Poise is also well connected for the City and is a short walk (0.4 miles) from Hoxton Overground station.

As well as paying the rent, you may also be required to make the following permitted payments. If your tenancy does not qualify as an AST, additional fees may apply. Please visit jll.co.uk/fees for details of fees which may be payable when renting a property.

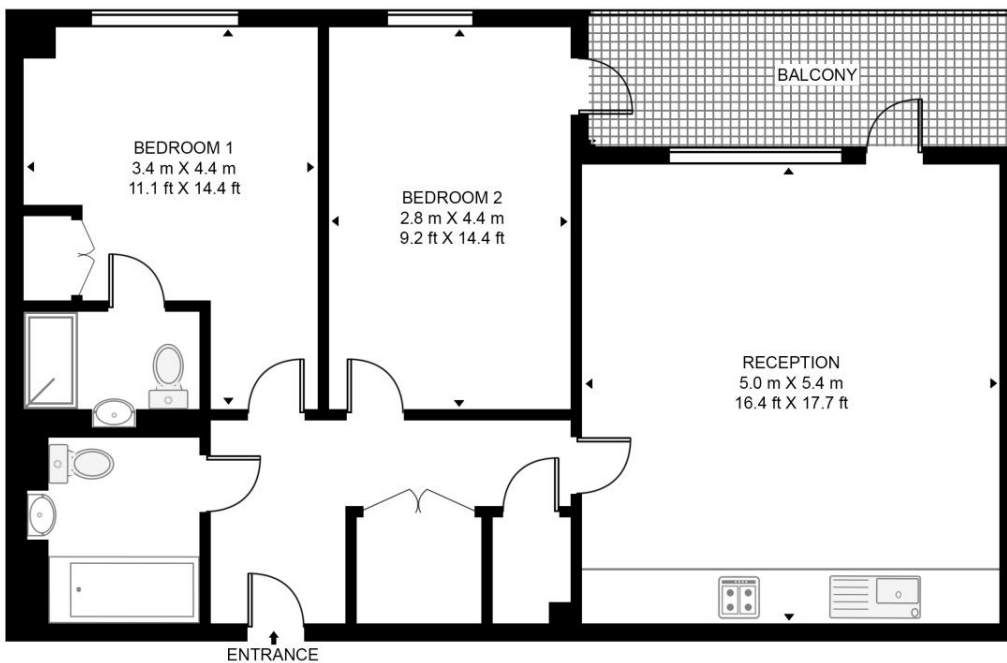
- - 2 Bedrooms
- - 2 Bathrooms
- - 4th Floor
- - Large balcony
- - Open plan kitchen with Siemens appliances
- - 0.4 miles from Hoxton Overground Station
- - Approx. 784 sq ft (72.8 sq m)
- - Furnished / Unfurnished
- - EPC: B

Floorplan

784 sq ft | 73 sq m

CHARLOTTE KING COURT

APPROXIMATE GROSS INTERNAL FLOOR AREA 778 SQ.FT (72.3 SQ.M)



FOURTH FLOOR



This floor plan has been defined by the RICS Code of Measurement. This floor plan and all others are for approximate representative purposes only and upon usage is agreed to as such by the client.

WWW: hdvirtualart.com | TEL: 0203.974.1567 | EMAIL: info@hdvirtualart.com

City
25 Walbrook The Walbrook
Building,
London EC4N 8AF
+4420 7337 4000

Urban living, your way.

jll.co.uk/residential

© 2019 Jones Lang LaSalle IP, Inc. All rights reserved. All information contained herein is from sources deemed reliable; however, no representation or warranty is made to the accuracy thereof.

