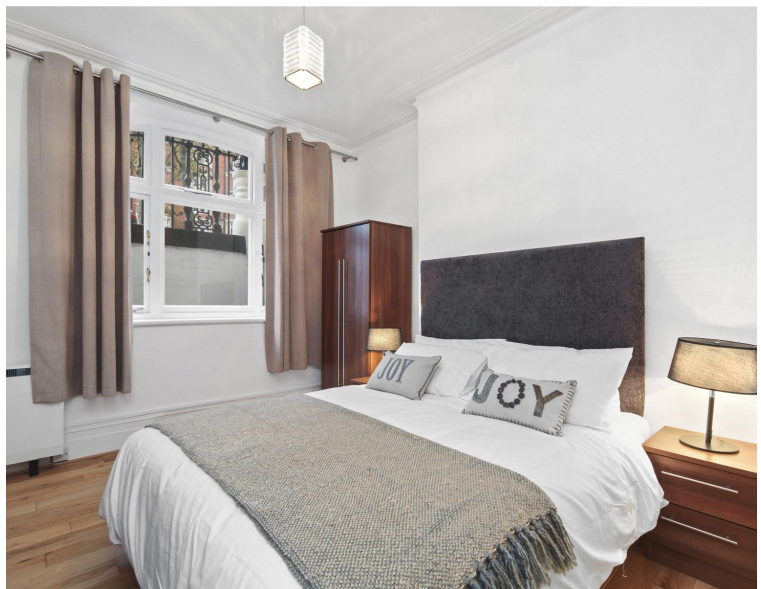




Iverna Court, London W8

Guide price £890,000 Leasehold







Description

A well presented two double bedroom apartment on the lower ground floor of a beautifully maintained mansion block. Property comprises two double bedrooms, two bathrooms, living room, separate eat in kitchen and a storage cupboard. The property is offered on a furnished basis and benefits from an on-site porter. Iverna court is a one minute walk to Kensington High Street station and in easy reach of the shops and restaurants of the high street plus a short walk to Hyde Park.

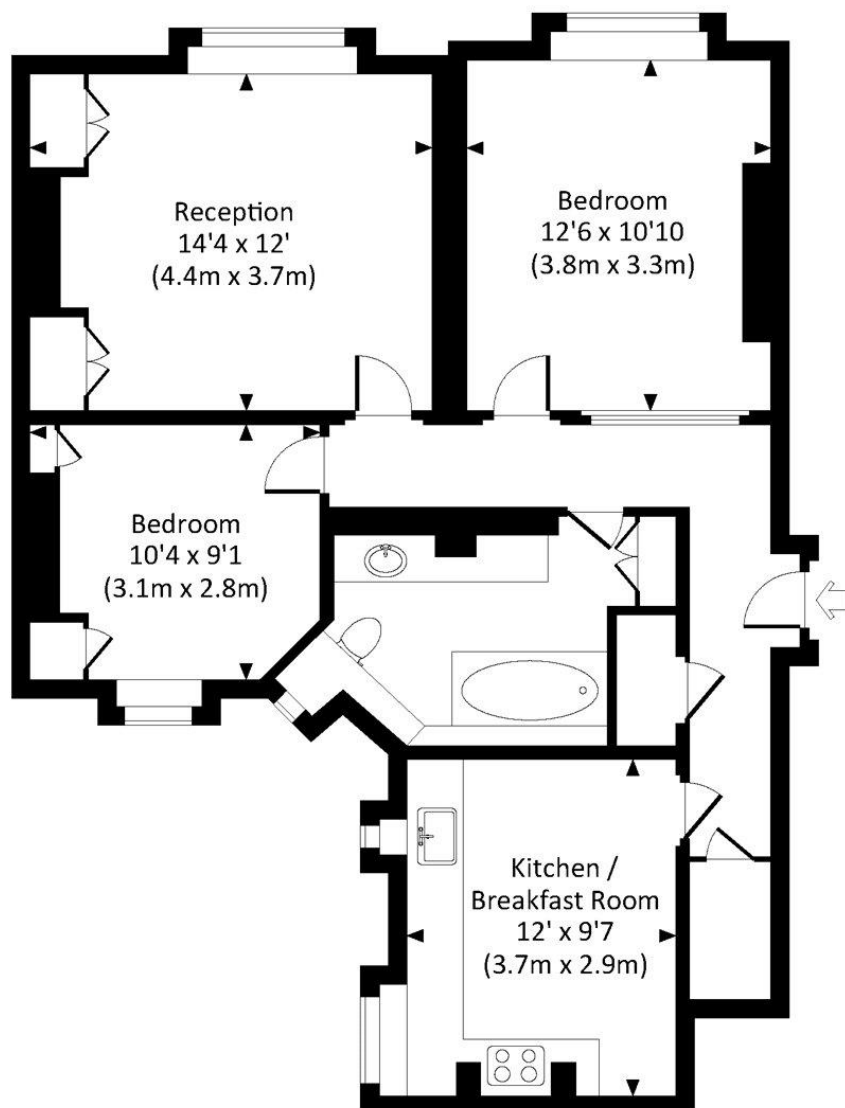
- 2 Bedrooms
- 1 Bathroom
- Porter
- Recently refurbished
- Eat in kitchen
- Approx 785 sq ft (73 sq m)
- EPC: E

Floorplan

785 sq ft | 73 sq m

IVERNA COURT, W8

Approx. gross internal area
785 Sq.Ft. / 73.0 Sq.M.



LOWER GROUND FLOOR



All measurements have been made in accordance with RICS Code of Measuring Practice which are approximate only and only for illustrative purposes. For the avoidance of doubt, Dowling Jones Design shall not be liable for any reliance on these measurements. © 2016 www.dowlingjones.com 020 7610 9933

Kensington
387 Kensington High Street,
London W14 8QA
+4420 7087 5696
lettingskensington@eu.jll.com

Urban living, your way.

jll.co.uk/residential

© 2019 Jones Lang LaSalle IP, Inc. All rights reserved. All information contained herein is from sources deemed reliable; however, no representation or warranty is made to the accuracy thereof.

