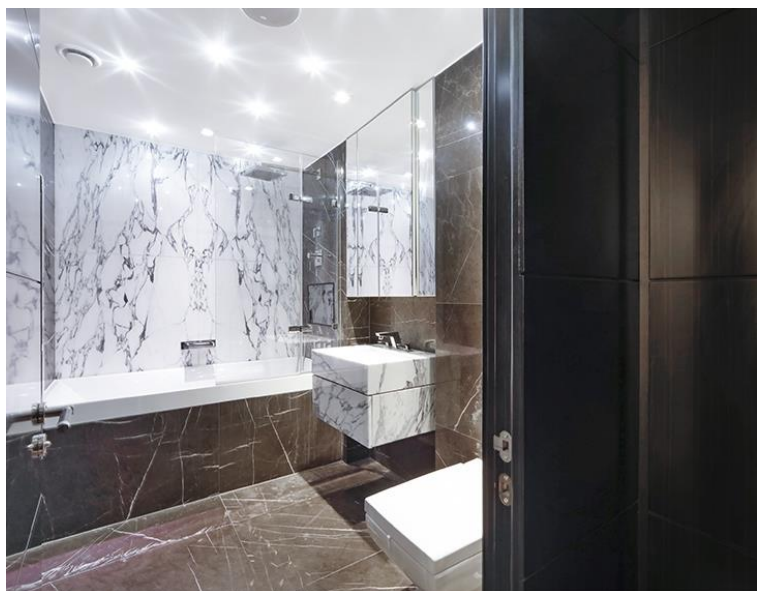




Kensington High Street, London W14

Asking price £1,695,000 Leasehold







Description

A stunning fourth floor luxury apartment in one of London's most opulent new developments in the heart of Kensington. The property comprises master bedroom with en suite bathroom, second double bedroom, one shower room, a large reception room and a fully fitted, open plan kitchen. The flat has been finished to the highest of standards and further benefits include a balcony, residents parking, use of the swimming pool, gym, sauna, steam room, cinema and 24 hour concierge service. Charles House is situated at the end of Kensington High Street with easy access to Kensington Olympia overland and High Street Kensington tube station. The open spaces of Holland Park are just a short stroll away.

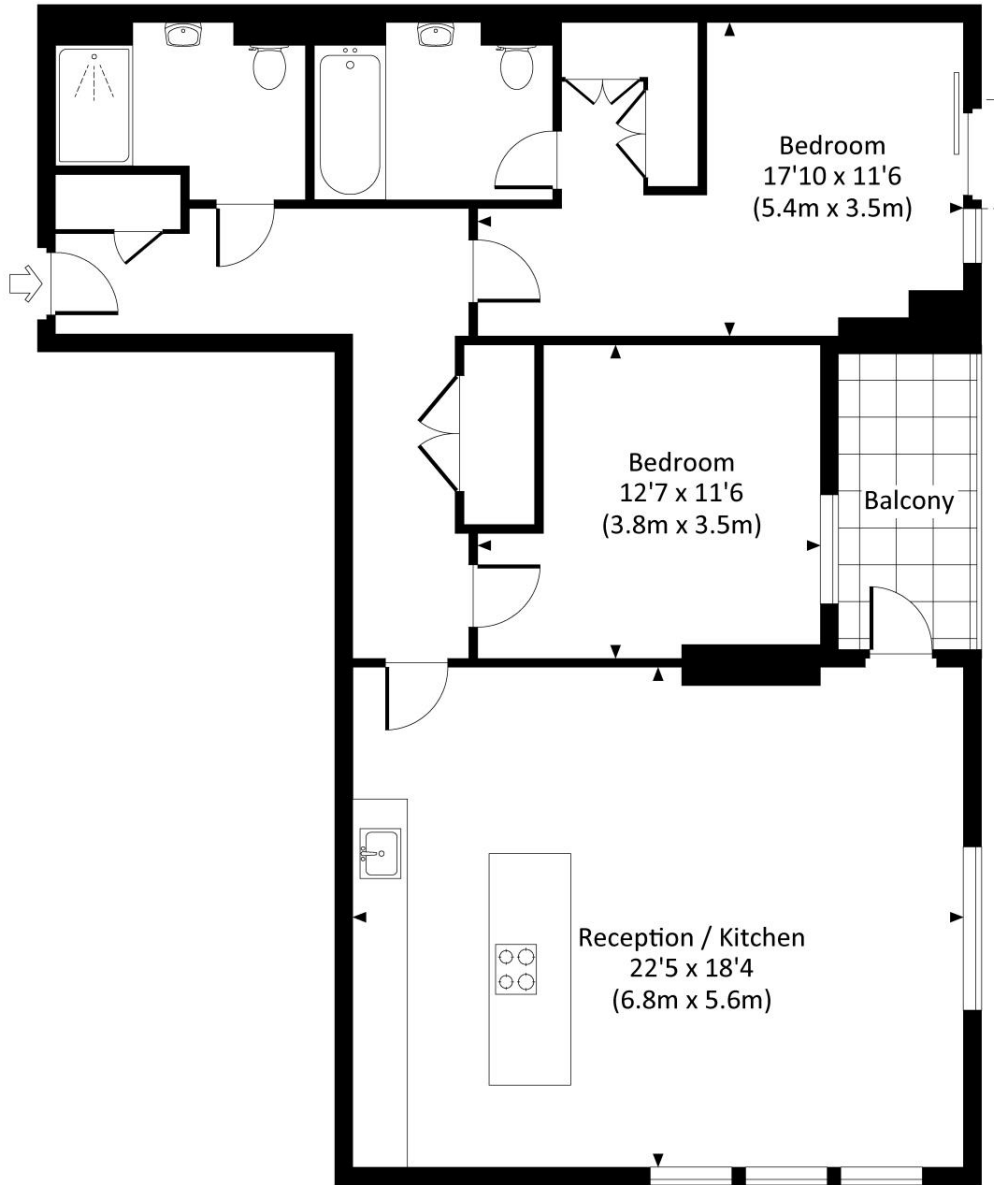
- *Available for LIVE online viewing*
- 2 Double bedrooms
- 2 Bathrooms
- 24 Hour concierge
- Gym, swimming pool, cinema
- Communal gardens
- Approx 1003 sq ft (95 sq m)
- EPC: B

Floorplan

1,003 sq ft | 93 sq m

CHARLES HOUSE, HIGH STREET KENSINGTON, W14

Approx. gross internal area
1002 Sq Ft. / 93.1 Sq M.



FOURTH FLOOR

All measurements are approximate and for guidance and illustrative purposes only.
Photography and Floor Plans by www.thedowlingco.com - +44 7793 974 209

Kensington
387 Kensington High Street,
London W14 8QA
+4420 7087 5696
lettingskensington@eu.jll.com

Urban living, your way.

jll.co.uk/residential

© 2019 Jones Lang LaSalle IP, Inc. All rights reserved. All information contained herein is from sources deemed reliable; however, no representation or warranty is made to the accuracy thereof.

