



All Saints Road, London W11

Guide price £595,000 Leasehold





Description

A fantastic 1 bedroom apartment with an array of charming features, located on the popular All Saints Road, close to Portobello Road and Westbourne Grove.

The space is defined by soaring 3.2m ceiling heights, the open-plan kitchen/reception room boasts a seamless integration, complimented by timeless wooden flooring and blessed with large south-west facing sash windows, allowing an abundance of natural light to fill the space and creating a warm and inviting ambiance.

Located in the vibrant area of Notting Hill in west London and well-connected with nearby transport links including Westbourne Park and Ladbroke Grove tube stations, as well as various bus routes and cycle hire docking stations. This area is famous for its charming architecture, bustling Portobello Road Market, annual Notting Hill Carnival, beautiful Holland Park, historic Electric Cinema, and proximity to Kensington Palace. It offers a lively atmosphere and a range of attractions and amenities for residents and visitors to enjoy.



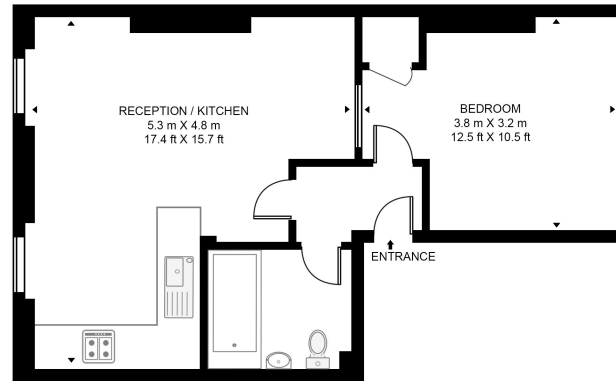
- Notting Hill
- 1 Double bedroom
- 1 Bathroom
- First floor
- High ceiling
- Portobello Road Market within 400 yards
- Westbourne Grove Station within 600 yards
- 420 sq ft / 39 sq m
- EPC C

Floorplan

420 sq ft | 39 sq m

ALL SAINTS ROAD

APPROXIMATE GROSS INTERNAL FLOOR AREA 420 SQ.FT (39 SQ.M)



FIRST FLOOR



This floor plan has been defined by the RICS Code of Measurement. This floor plan and all others are for approximate representative purposes only and upon usage is agreed to as such by the client.
WWW: hdvirtualart.com | TEL: 0203.974.1567 | EMAIL: info@hdvirtualart.com

Kensington
387 Kensington High Street,
London W14 8QA
+4420 7087 5696
saleskensington@eu.jll.com

Urban living, your way.

jll.co.uk/residential

© 2019 Jones Lang LaSalle IP, Inc. All rights reserved. All information contained herein is from sources deemed reliable; however, no representation or warranty is made to the accuracy thereof.

